

**A PRECIOUS AND BASE METAL
EXPLORATION COMPANY**



Corporate Presentation May 2020

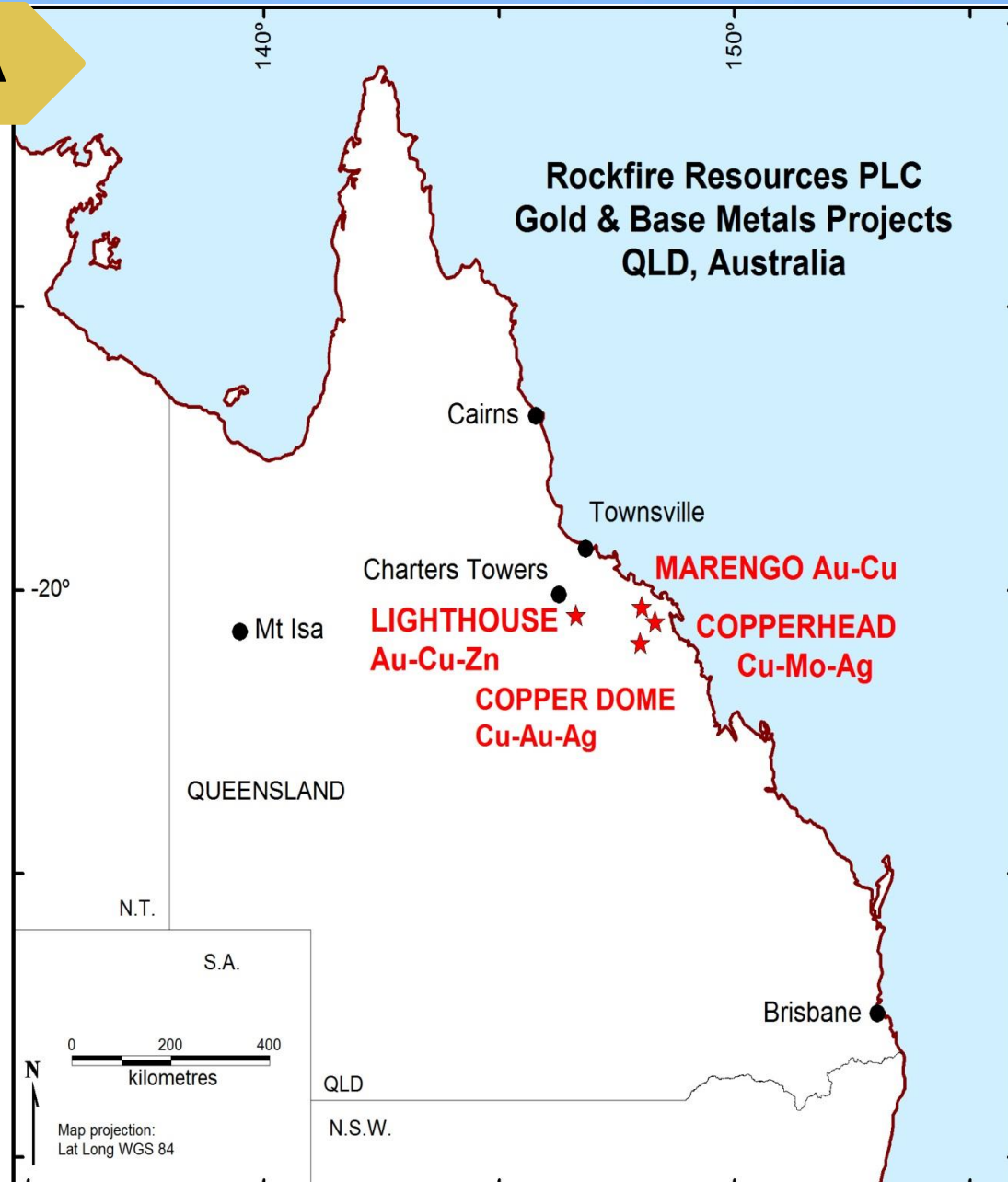
DISCLAIMER

Important Information

This presentation has been prepared by Rockfire Resources plc (“**ROCK**” or the “Company”). It should not be considered as an offer or invitation to subscribe for, or purchase any, securities in the Company or as an inducement to make an offer or invitation with respect to those securities. This presentation contains forecasts, projections and forward looking information. Such forecasts, projections and information are not a guarantee of future performance and involve unknown risks and uncertainties, many of which are out of ROCK’s control. Actual results and developments will almost certainly differ materially from those expressed or implied. ROCK has not audited or investigated the accuracy or completeness of the information, statements and opinions contained in this presentation. To the maximum extent permitted by applicable laws, ROCK makes no representation and can give no assurance, guarantee or warranty, express or implied, as to, and takes no responsibility and assumes no liability for (1) the authenticity, validity, accuracy, suitability or completeness of, or any errors in or omission from, any information, statement or opinion contained in this presentation and (2) without prejudice to the generality of the foregoing, the achievement or accuracy of any forecasts, projections or other forward looking information contained or referred to in this presentation. This overview of the Company does not purport to be all inclusive or to contain all information which its recipients may require in order to make an informed assessment of ROCK’s targeted prospects. You should conduct your own investigation and perform your own analysis in order to satisfy yourself as to the accuracy and completeness of the information, statements and opinions contained in this presentation before making any investment decision.

QUEENSLAND, AUSTRALIA

- ✓ 100%-owned assets
- ✓ Mining-friendly
- ✓ Significant exploration upside



BOARD & MANAGEMENT – EXPERIENCE IS KEY

- Gordon Hart - Chairman (GAICD)
Equities, Finance, Governance
(+35 years experience)
- David Price – Managing Director / CEO
(B.Sc., FAusIMM)
Geologist, Executive
(+30 years experience)
- Ian Staunton – Non-Executive
Audit, Corporate Finance
(+40 years experience)
- Nicholas Walley – Non-Executive
Business, Investor
(+35 years experience)
- Patrick Elliott – Non-Executive
Mergers, Acquisitions, Investor
(+35 years experience)
- Edward Fry – Exploration Manager
(B.Sc., MAusIMM)
Geologist, Structural Specialist
(+15 years experience)

ROCKFIRE – POISED FOR GROWTH

- ✓ Targeting major discoveries of precious and base metals
- ✓ Exploring amongst multi-million-ounce gold deposits
- ✓ Growth ambition for a + £100m market cap company
- ✓ Significant exploration upside to each project
- ✓ Currently an early-entry market cap opportunity
- ✓ A quality portfolio of 100%-owned projects.

HIGH QUALITY ASSET PORTFOLIO

GOLD PROJECTS

LIGHTHOUSE TENEMENT

- Plateau
- Double Event
- Cardigan Dam
- Split Rock

KOOKABURRA TENEMENT

MARENGO TENEMENT

MONARCH TENEMENT

NEW LEYSHON TENEMENT

COPPER PROJECTS

COPPERHEAD TENEMENT

COPPER DOME TENEMENT

BASE METAL PROJECTS

LIGHTHOUSE TENEMENT

- Rollston River (Zinc, Lead, Silver)
- Warrawee (Zinc, Lead, Silver)
- Scrubby Dam (Zinc, Lead, Silver)

Rockfire continues to appraise new project opportunities.
Increased company value may also come from acquisition of quality growth projects.

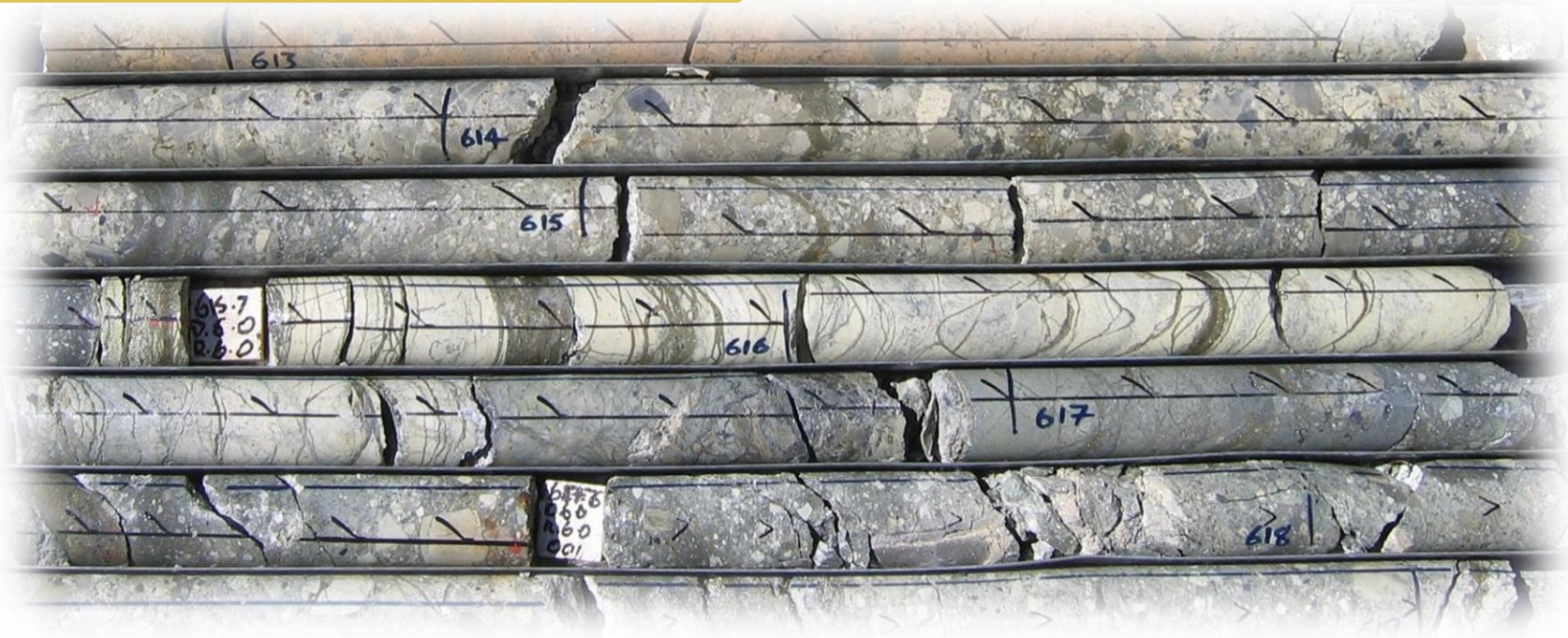
Directors and Management hold 14.23 % of ROCK

AIM Code: ROCK	
Ordinary Shares (million)	632,938,535
Market Cap (0.8p)	£5.1M
Number of shareholders	157
Percentage of shares not in public hands 14.23%	

Shareholder	Shares (M)	%
Nicholas Walley *	51,715,800	8.17
Michael Somerset-Leeke	51,151,102	8.08
David W Price *	13,850,000	2.19
Edward Fry *	13,000,000	2.05
Gordon Hart *	8,823,530	1.39
Patrick Elliott *	2,941,176	0.46
* denotes directors and management		22.35

Owned 100% by Rockfire

LIGHTHOUSE TENEMENT



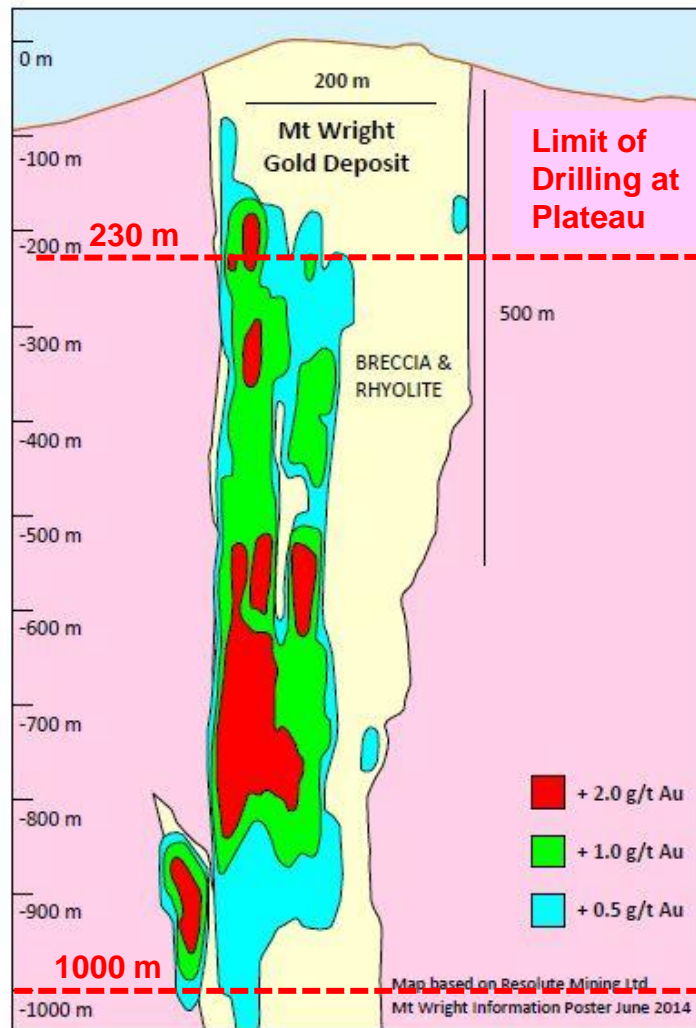
Maiden JORC Inferred Resource (July 2019)
1.35mt @ 1.18g/t Au = 51,000 ounces of gold

LIGHTHOUSE – OUTSTANDING GEOLOGICAL SETTING

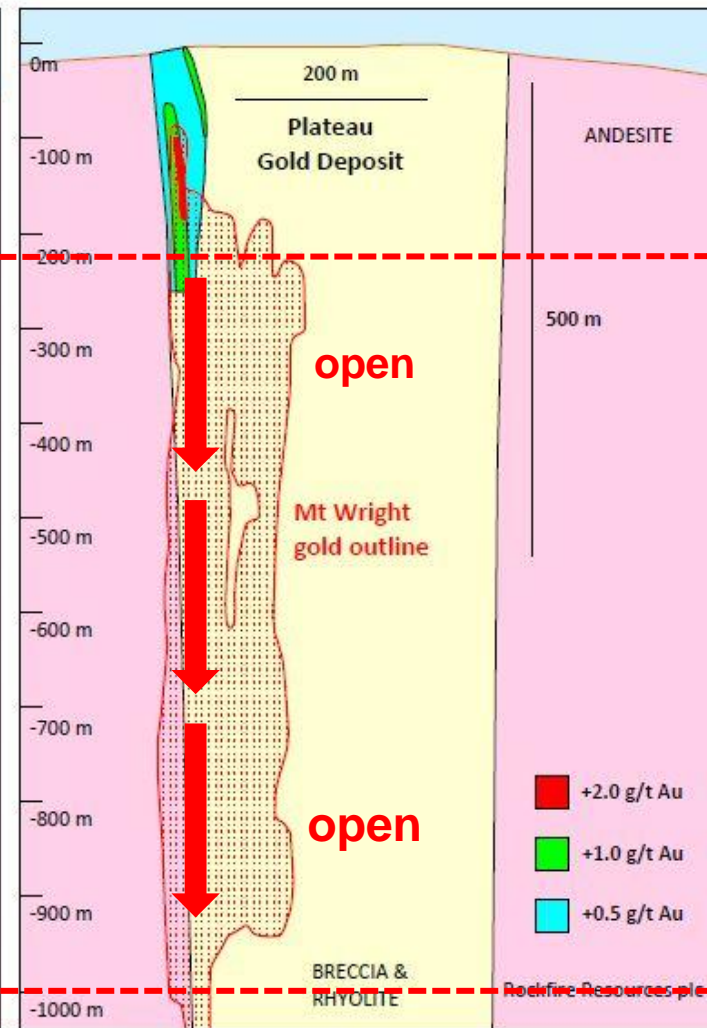
- ✓ Located in the Charters Towers Region, which has a metal endowment of + 20M ozs gold
- ✓ 193 square kilometre licence area
- ✓ High-grade, near-surface gold
- ✓ Low-medium grade gold extending to depth over intervals of +150m
- ✓ Similarities to the Mt Wright Gold Mine (47 km to the northeast)
- ✓ Three operating gold processing plants are within trucking distance of Lighthouse
- ✓ Although current focus is on exploration of the Plateau Gold Deposit, numerous other prospects occur within the Lighthouse tenement

PLATEAU – ANOTHER MT WRIGHT?

- ✓ 47 km away
- ✓ +1.5 M oz gold mined
- ✓ Similar dimensions
- ✓ Similar grades in upper levels
- ✓ Similar geology
- ✓ Similar mineral zoning
- ✓ Processing plant with excess capacity

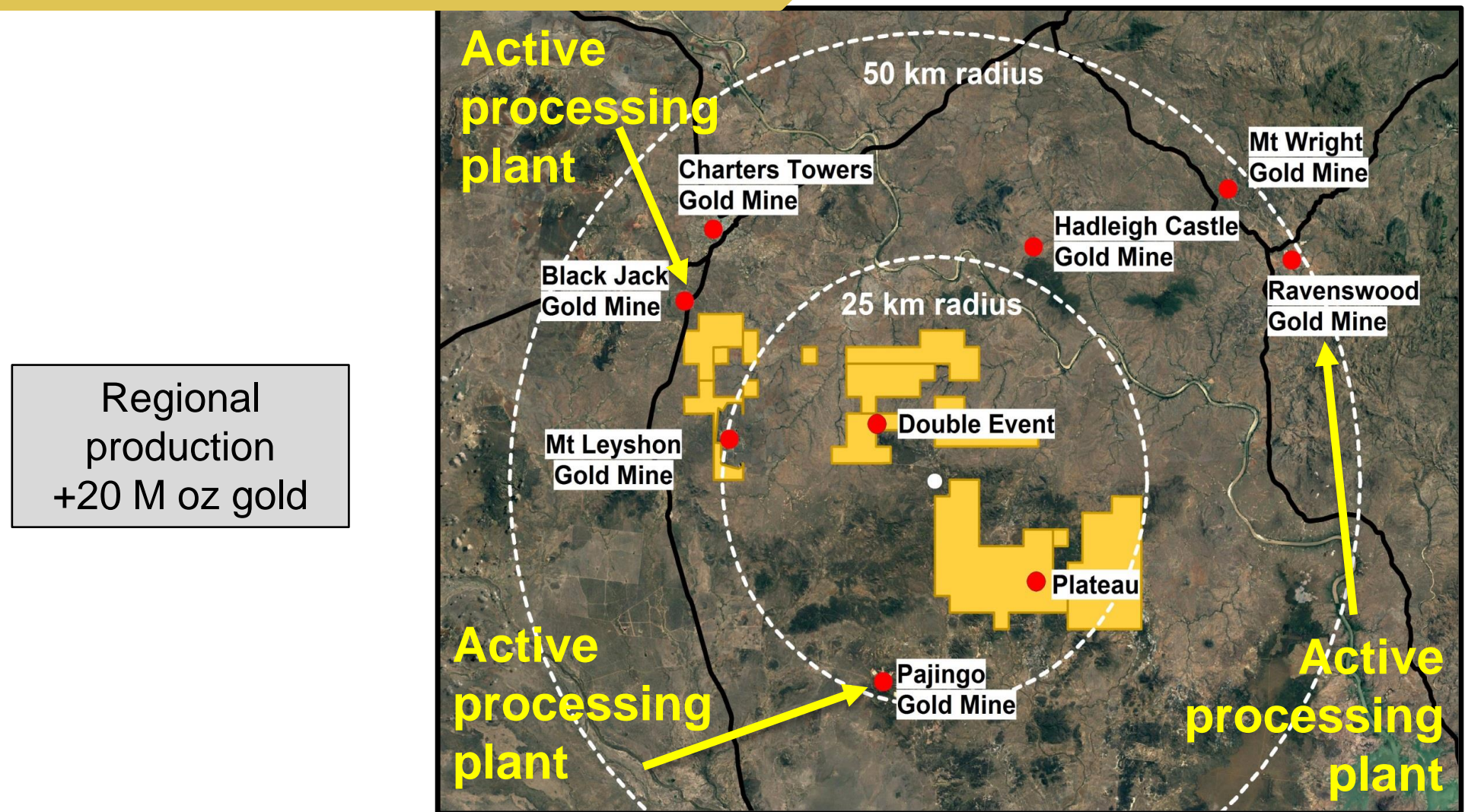


Mt Wright Gold Mine



Plateau Gold Deposit

NEARBY GOLD PROCESSING PLANTS



Rockfire has no guarantee that use of processing facilities owned and operated by other companies will be made available for its use

PLATEAU – FIRST MAJOR HIT



RC DRILLING NOVEMBER 2019

- 12 m @ 2.5 g/t Au from 61m
- 16 m @ 1.7 g/t Au from 27m
- 10 m @ 2.0 g/t Au from 65m
- 30 m @ 1.2 g/t Au from 39m
- 18 m @ 1.3 g/t Au from 14m
- 22 m @ 1.0 g/t Au from 22m
- **177 m @ 0.5 g/t Au from surface**

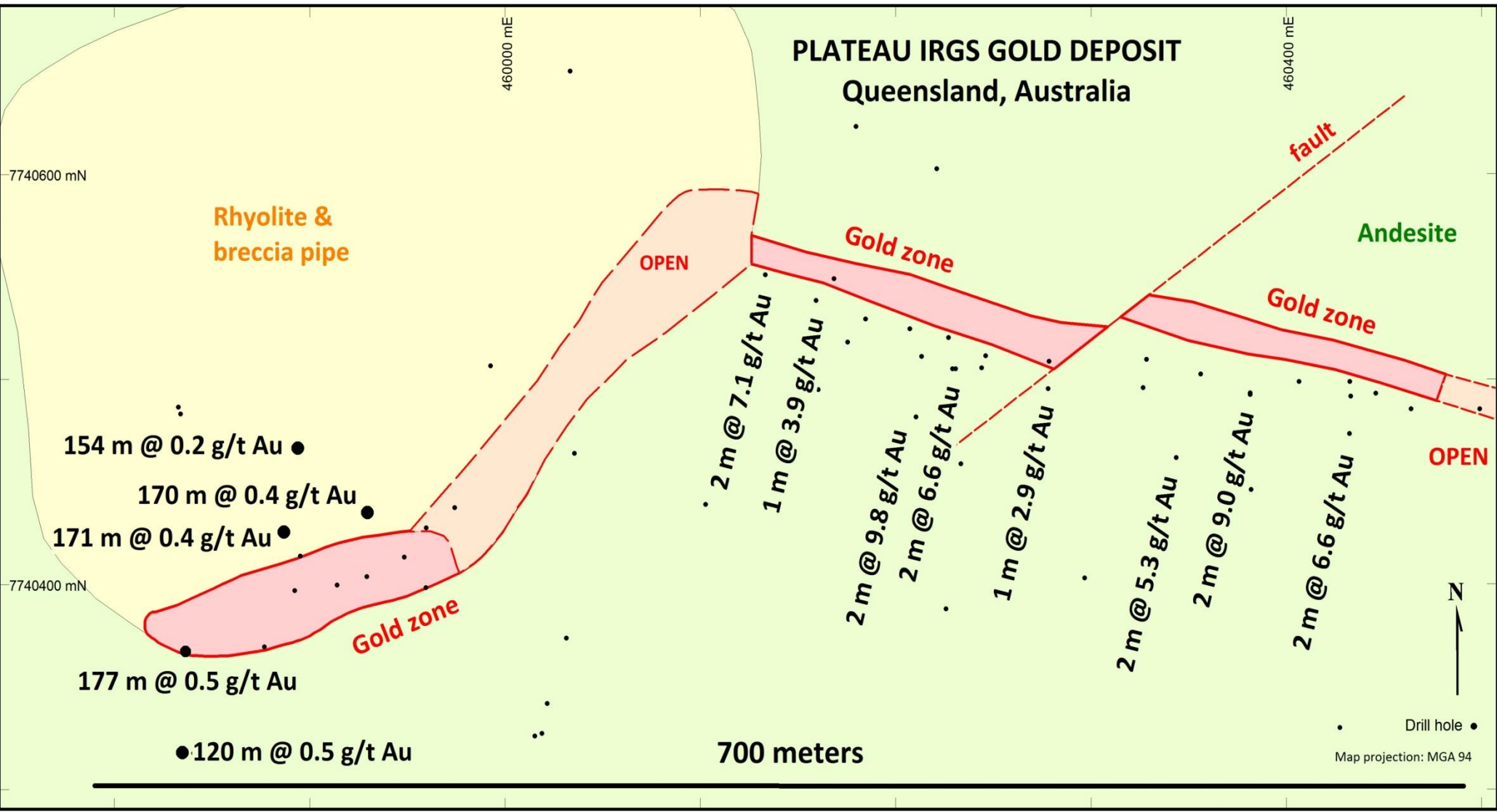
PLATEAU – MORE MAJOR HITS



RC DRILLING JANUARY 2020

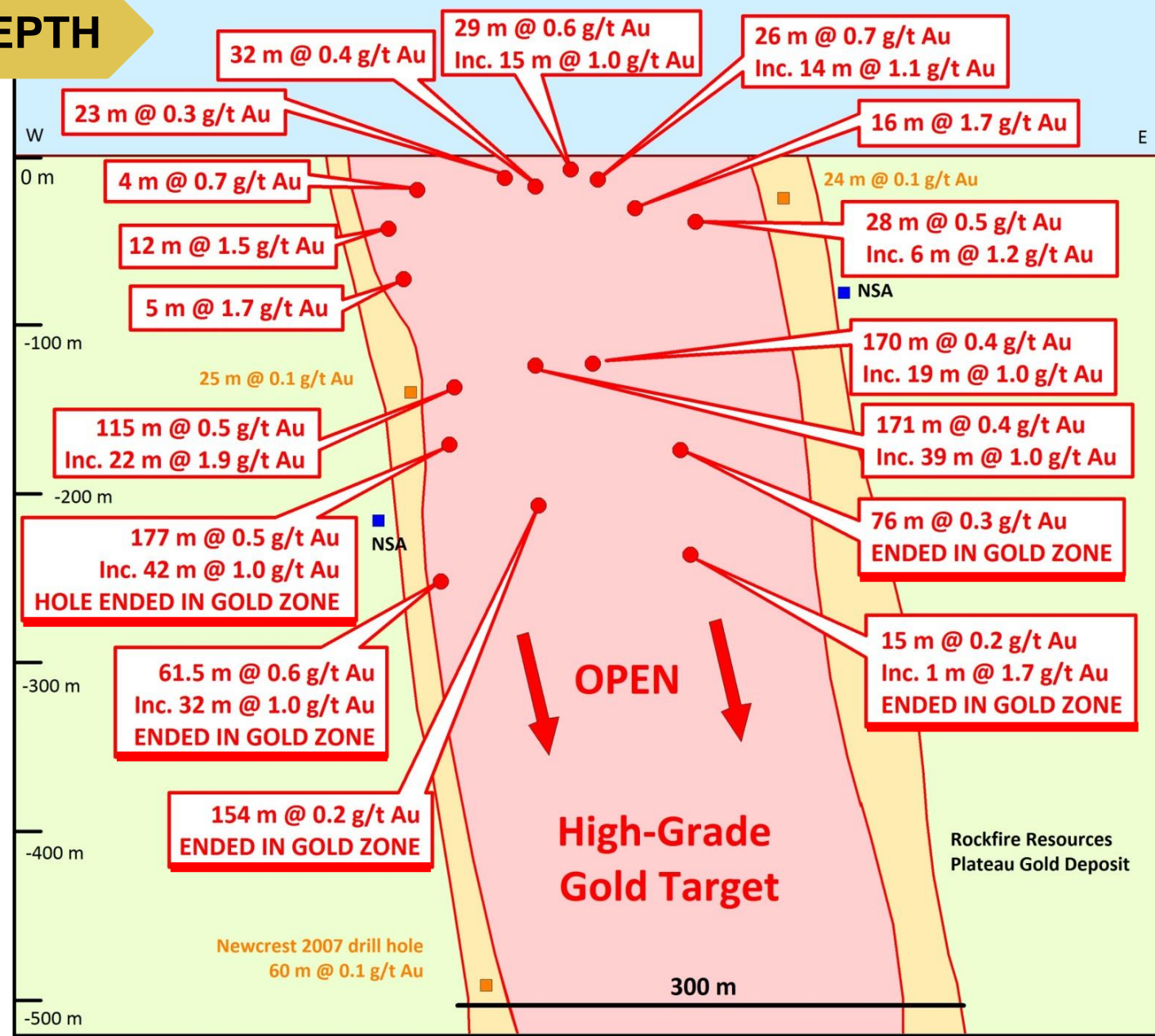
- 154 m @ 0.2 g/t Au from 97m
- 171 m @ 0.4 g/t Au from 26m
- 170 m @ 0.4 g/t Au from 37m

PLATEAU – EXPANDING FOOTPRINT



PLATEAU – OPEN AT DEPTH

- ✓ 5 deepest holes ended in gold mineralisation
- ✓ 300 m long
- ✓ 70-80 m thick
- ✓ Open at depth
- ✓ + Silver/zinc credits
- ✓ Gold is present exclusively as native gold particles in pyrite
- ✓ Strong sericite-pyrite-marcasite alteration



Owned 100% by Rockfire

COPPERHEAD TENEMENT



Porphyry copper

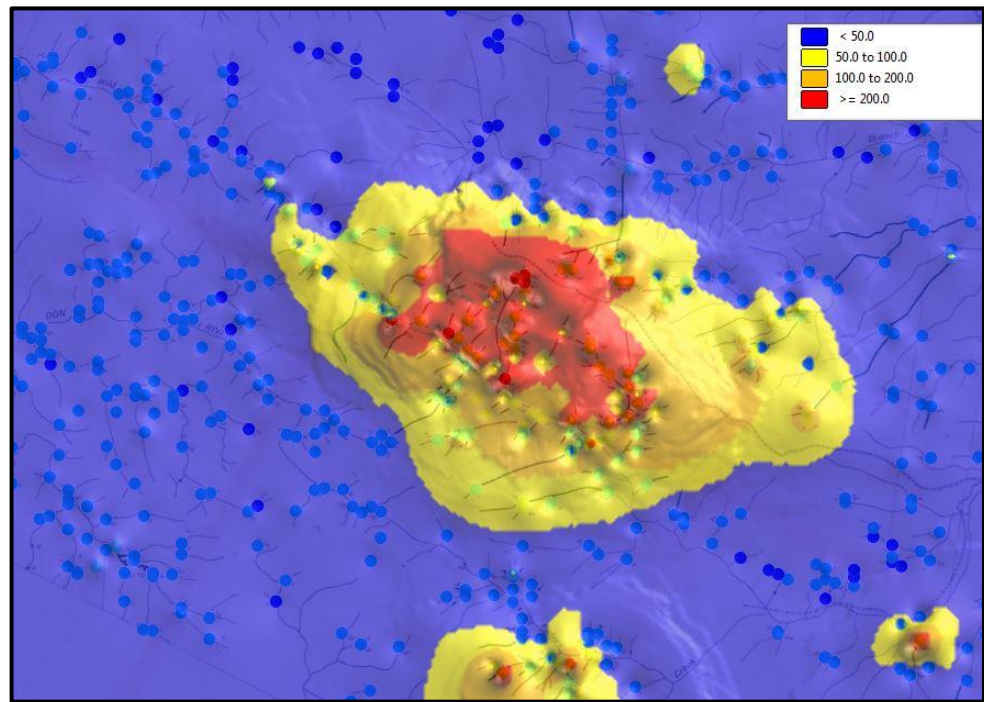
Listed in the USGS 'Global Mineral Resource Assessment'

COPPERHEAD – A SLEEPING GIANT?

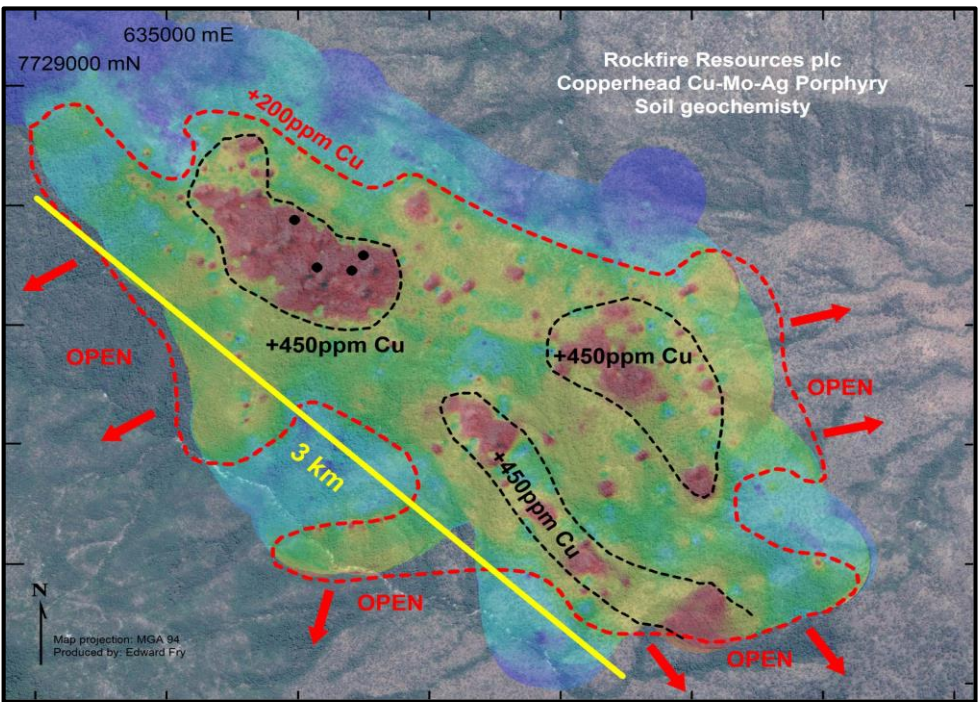
- ✓ Located in the East Tasmanide Porphyry Tract, hosting most of the known porphyry copper deposits on the east coast of Queensland
- ✓ 96.5 square kilometre licence area
- ✓ Copper has been encountered in every drill sample taken from 5 drill holes to a maximum depth of 300m from surface
- ✓ Within 200 km of Australia's largest copper refinery, owned by Glencore
- ✓ Under-explored and provides significant discovery potential

Rockfire has no guarantee that use of processing facilities owned and operated by other companies will be made available for its use

COPPERHEAD – LARGE-SCALE SURFACE ANOMALIES



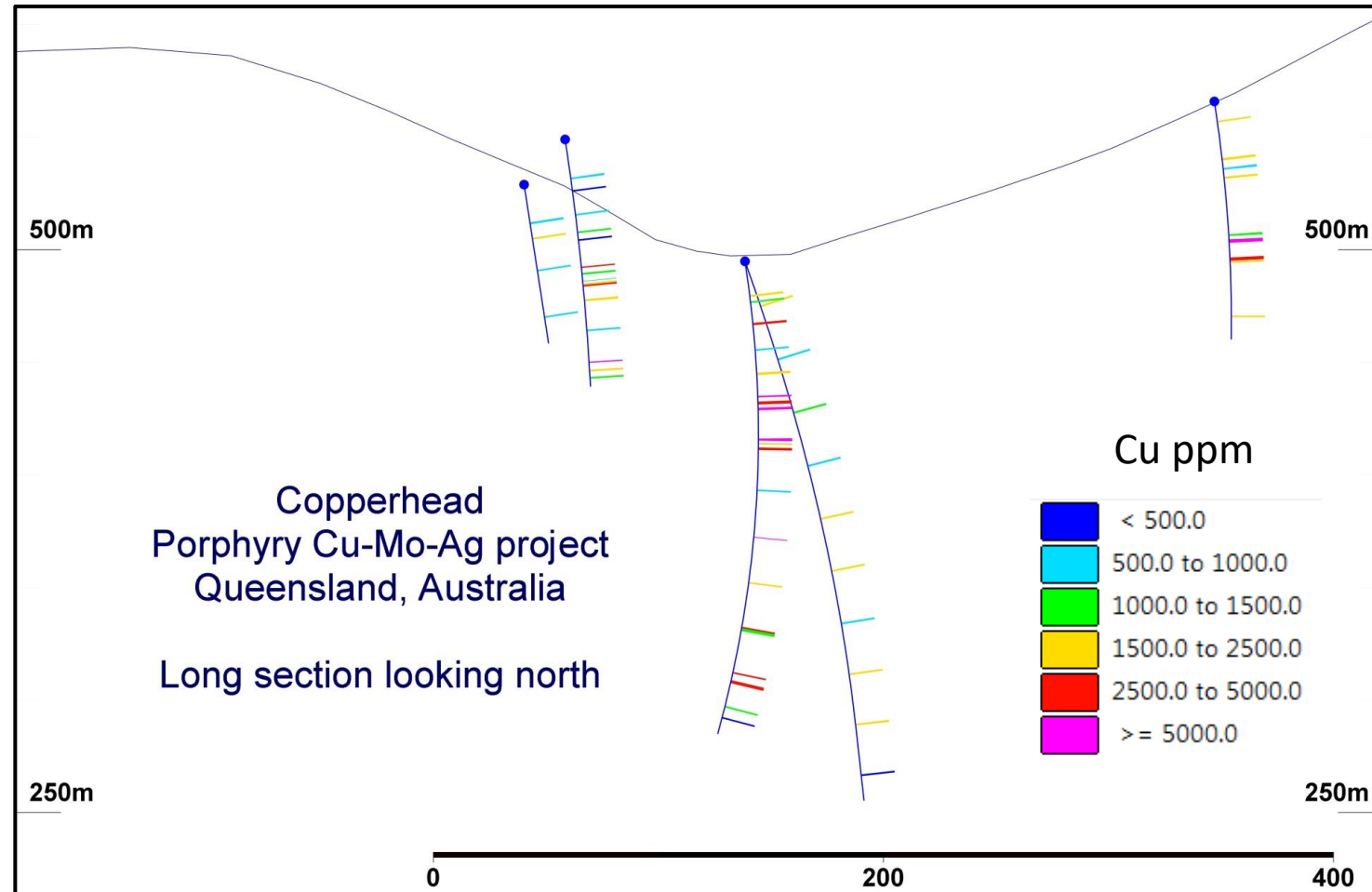
6 km long stream sediment anomaly
(red colour = + 200 ppm Cu)



+ 3 km long surface soil anomaly
(brown colour = + 450 ppm Cu)

COPPERHEAD – EVERY DRILL SAMPLE HIT COPPER

- 5 holes drilled by Carpentaria in 1972
- Core only sporadically sampled
- Highest values in core include 2.81% Cu and 12 g/t Ag
- Average grade from drilling is 0.35% Cu Eq.



Owned 100% by Rockfire

COPPER DOME TENEMENT



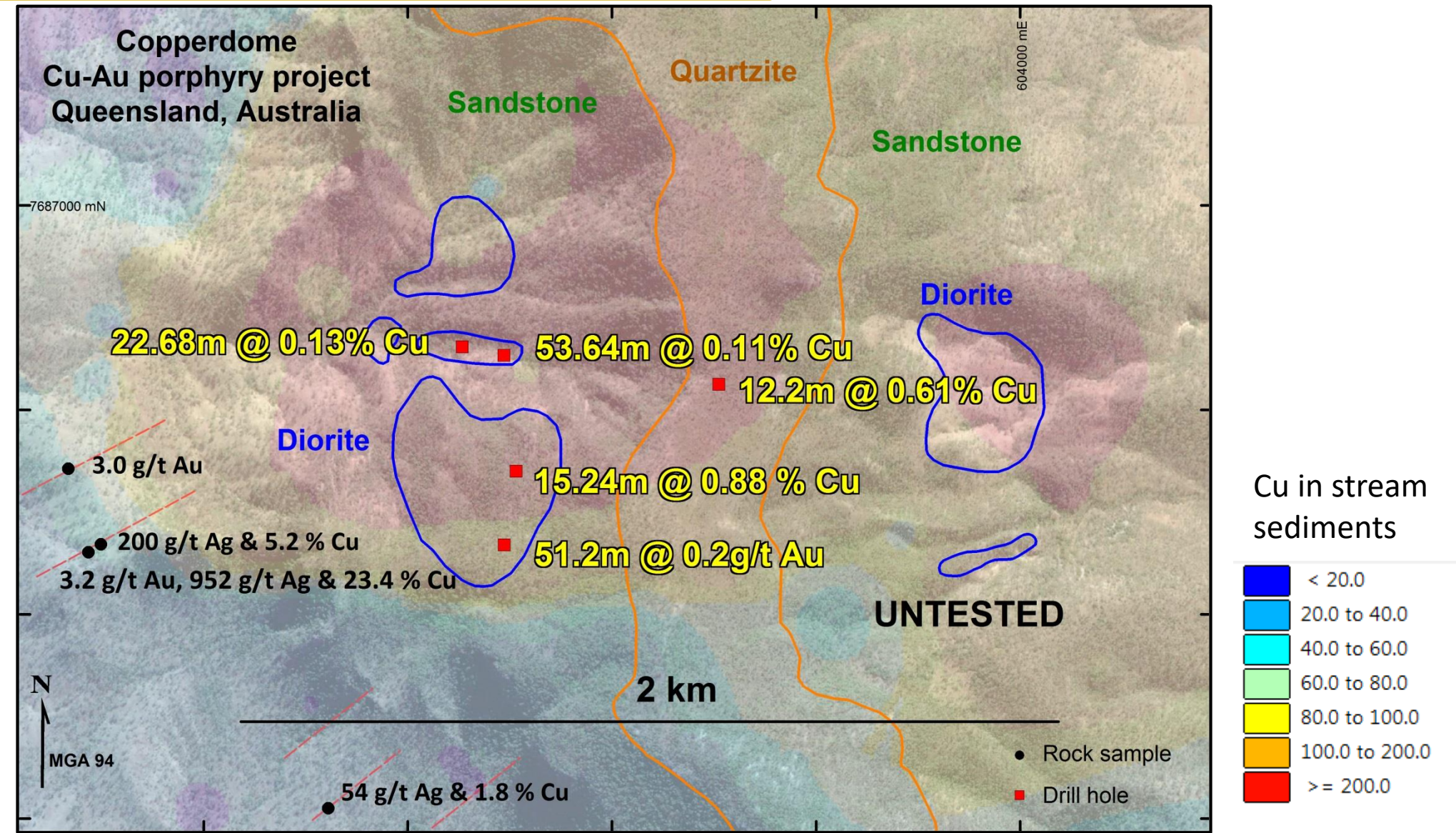
Porphyry copper

Listed in the USGS 'Global Mineral Resource Assessment'

COPPER DOME – ANOTHER LARGE-SCALE PROJECT

- ✓ 50 km from Copperhead and 80 km from Mt Carlton Au-Ag-Cu mine (+1.5 Moz Au, + 33 Moz Ag, +55 Kt Cu)
- ✓ Crops-out at surface (best grade **3.2 g/t Au, 952 g/t Ag & 23.4 % Cu**)
- ✓ Surface copper anomaly over 2 km long and 1km wide
- ✓ Within 200km of Australia's largest copper refinery, owned by Glencore
- ✓ Previous drilling has intersected;
 - 15.24 m @ **0.88 % Cu** (including 4.58 m @ 2.28 % Cu) from 161 m
 - 12.20 m @ **0.61 % Cu** (including 3.05 m @ 1.24 % Cu) from 54 m
 - 24.38 m @ **0.27 % Cu** from 225 m
 - 53.64 m @ **0.11 % Cu** from 2 m
 - 22.68 m @ **0.13 % Cu** from 71 m
- ✓ Diamond hole QML004 - **51.20 m @ 0.20 g/t Au** (from 72 m downhole depth)

COPPER DOME – UNDER-EXPLORED, HIGH-POTENTIAL



ROCKFIRE – INVESTMENT SUMMARY

- ✓ Targeting major discoveries of precious and base metals
- ✓ 51,000 ounces of gold in JORC resource
- ✓ Multiple drill holes with continuous gold over very long intervals
- ✓ Exploring amongst multi-million-ounce gold deposits
- ✓ Two large-scale, underexplored copper projects
- ✓ Significant exploration upside to each project
- ✓ All projects are within trucking distance of operating processing facilities
- ✓ All projects are 100%-owned by Rockfire

CONTACT



www.rockfireresources.com

info@rockfireresources.com

Salisbury House, London Wall
London EC2M 5PS, United Kingdom

www.yellowjerseypr.com

rockfire@yellowjerseypr.com

Top Floor, 70-71 Wells Street, London,
W1T 3QE, United Kingdom