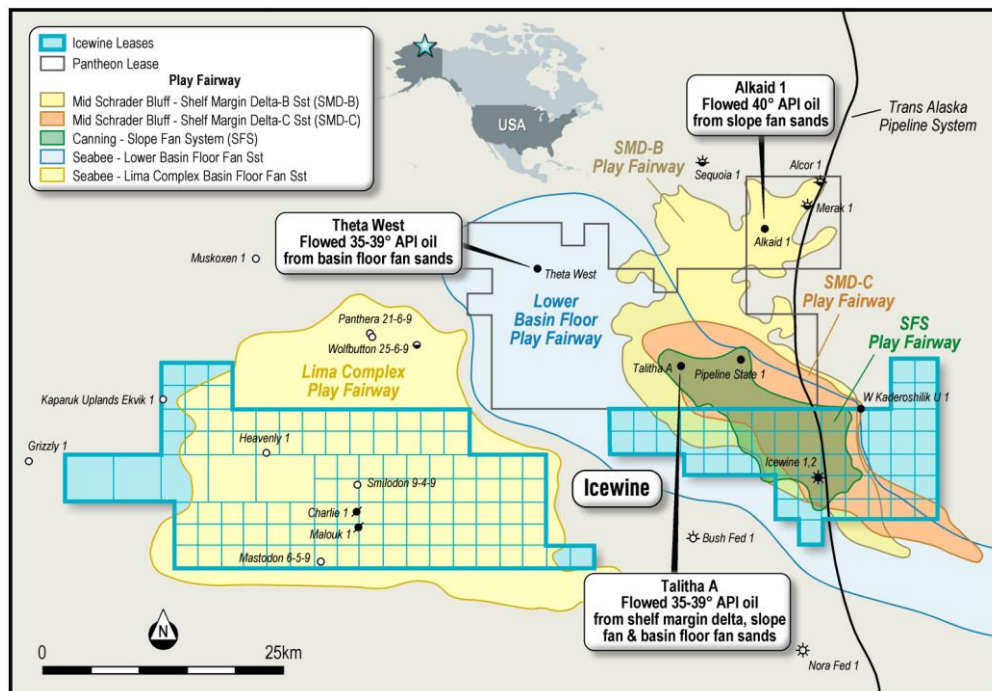
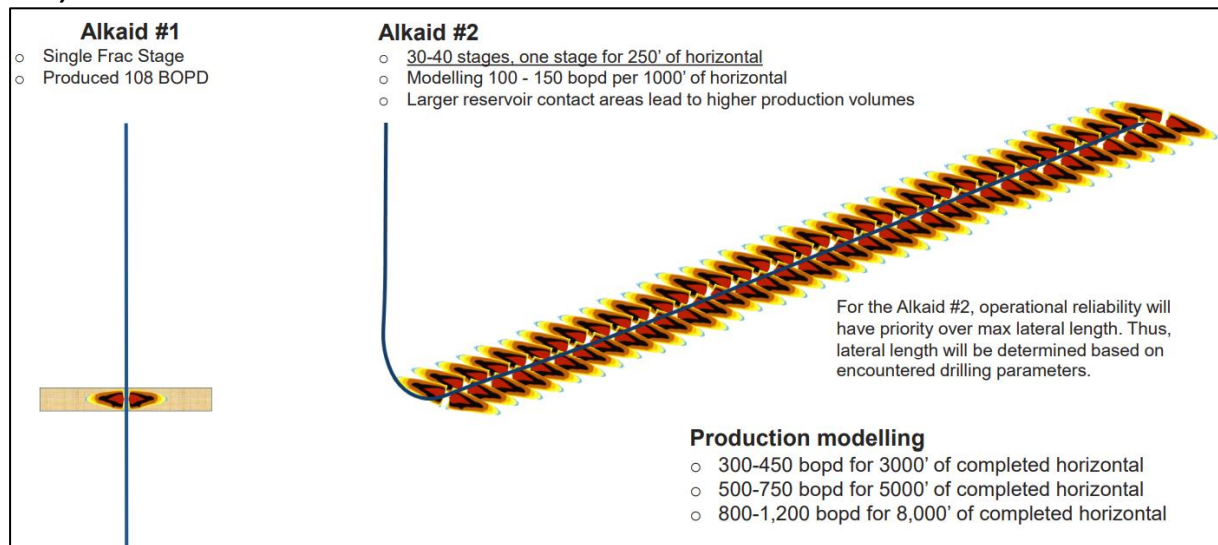


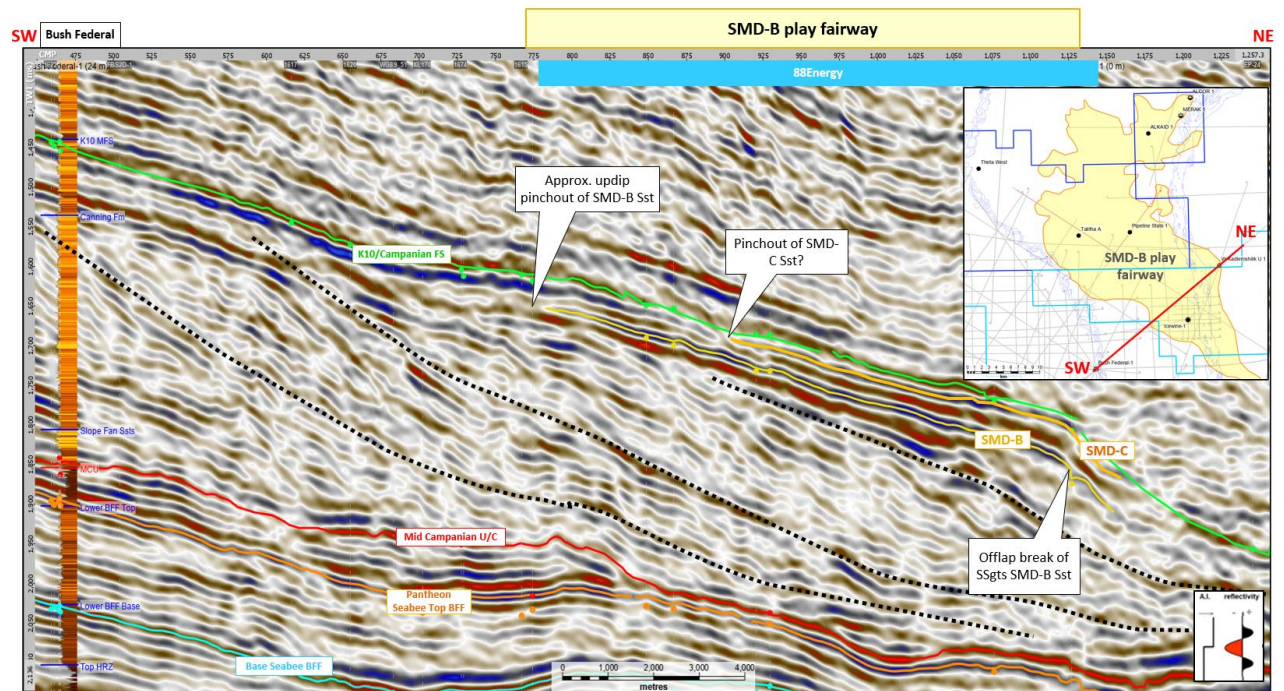
**Figure 1: Third-party mapping indicates extension of all PANR prospect play fairways into Project Icewine**



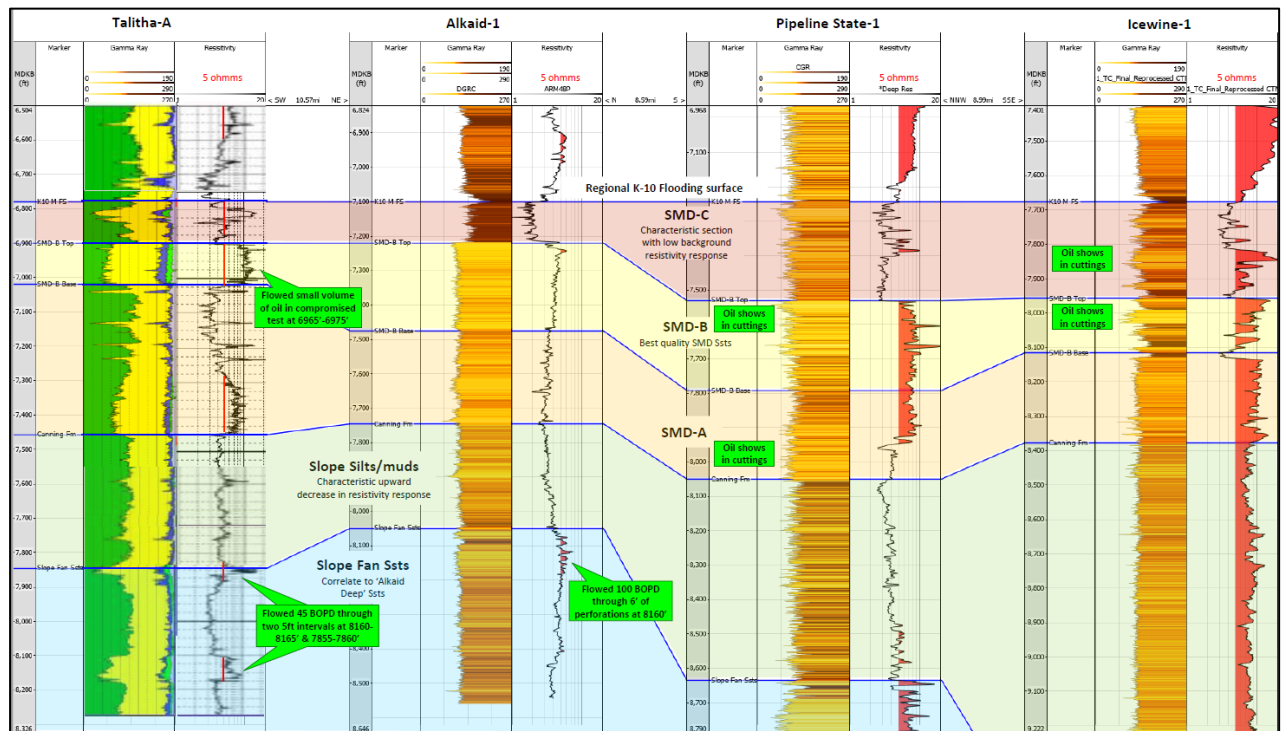
**Figure 2: Pantheon plans for a horizontal production well in Alkaid (see Pantheon announcement 24 January 2022).**



**Figure 3: Sweet-spot identification across the SMD-B and SMD-C play fairways**



**Figure 4: Shelf Margin Delta Sequence Correlation Panel**



**Figure 5: Project Icewine and Near Lease Discoveries**

