

Illustrations Accompanying the Announcement by African Mining and Exploration plc., entitled “Acquisition of Caracal Gold Mali SARL” July 3 2012

Figure 1. Generalised geology of the Kedougou-Kenieba Inlier, showing known gold deposits and the location of the Kossanto permits. (Source: Caracal)

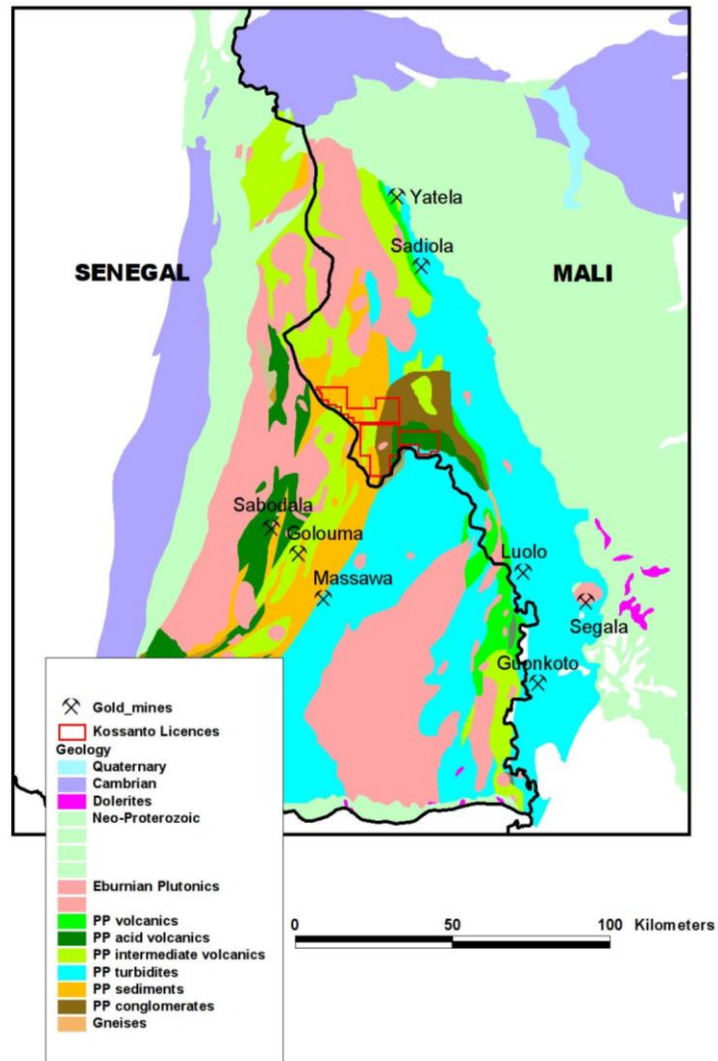


Figure 2. Target areas of the Kossanto permits combined with regional soil geochemistry and potassium alteration map. (Source: Caracal)

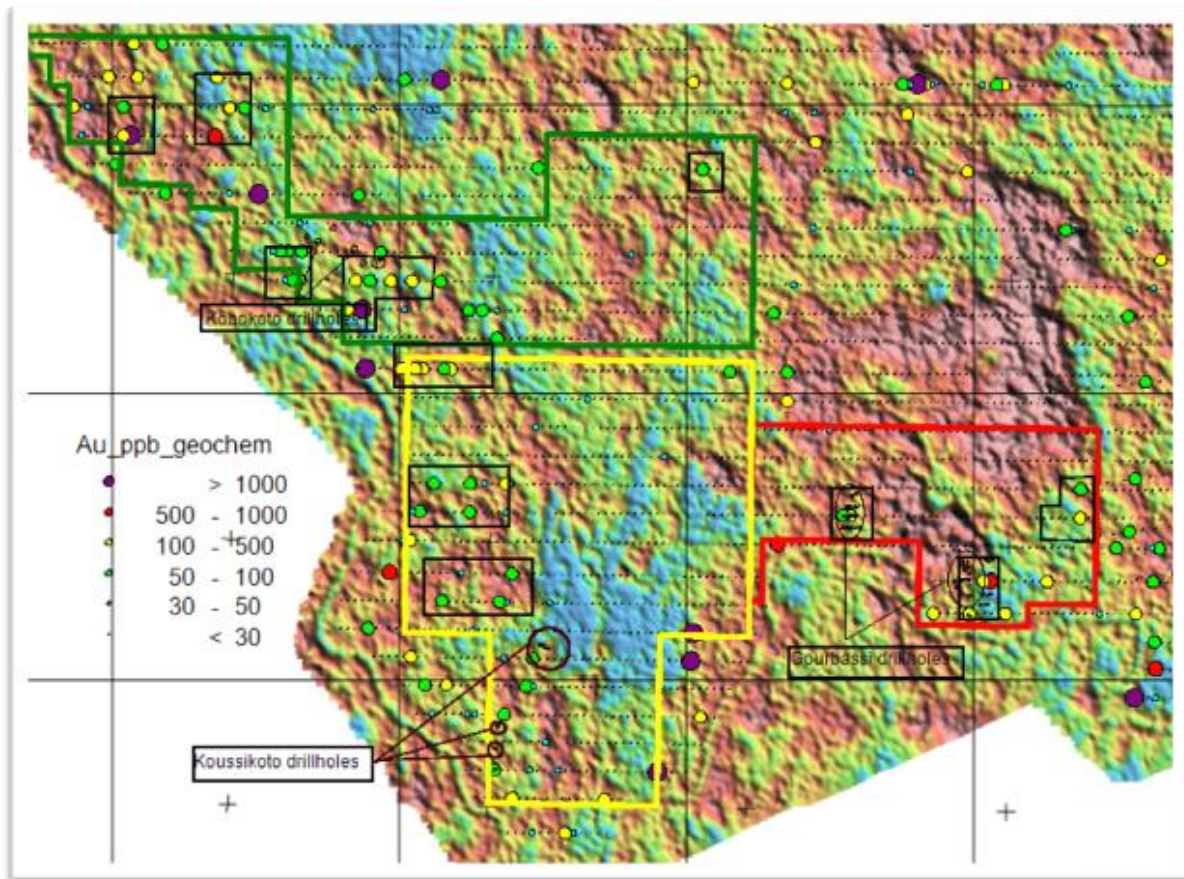


Figure 3. Target areas of the Kossanto permits combined with regional soil geochemistry and First Vertical derivative magnetism showing Caracal previous drill holes positions. (Source: Caracal)

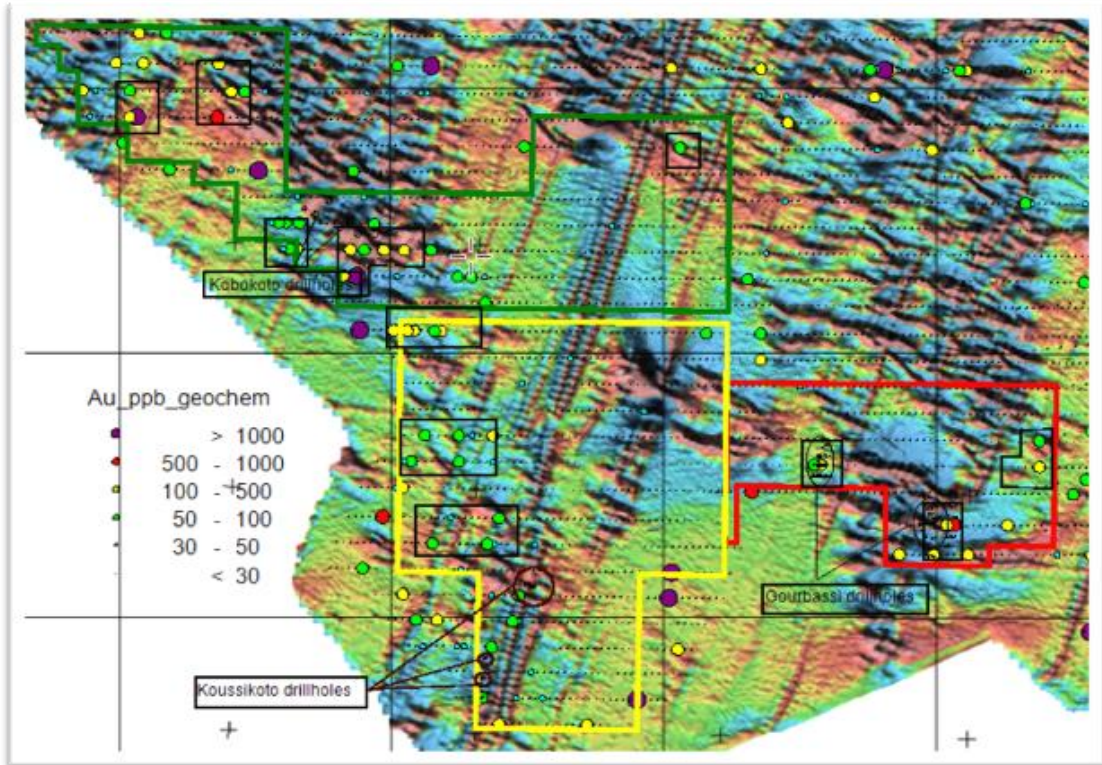


Figure 4. Aeromagnetic map showing Kossanto permits and Sadiola mine on the same dyke. (Source: Caracal)

