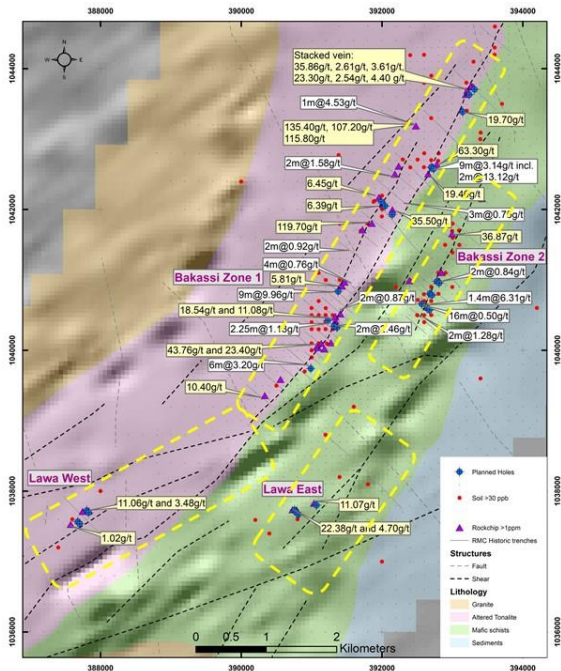
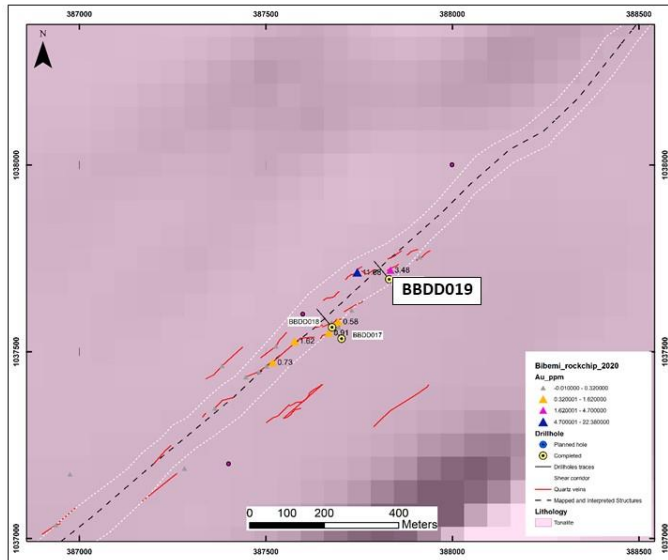


## BIBEMI PROJECT – FOUR KEY PROSPECTS



- Multiple orogenic gold targets identified over 8.3km north-east trending corridor
- Rock-chip sampling across all four prospects has returned significant anomalism with multiple samples returning 'bonanza' (greater than 1 ounce per tonne) gold grades
- Trenching at Bakassi Zone 1 and Bakassi Zone returned up to 9 metres grading 3.14 grammes per tonne gold
- Maiden drilling for a planned 3,080 metres in 28 holes is nearing completion
- Visible gold identified within three drillholes located along a c.3km strike length:
  - BBDD019 in Lawa West, at 70.90 metres downhole
  - BBDD020 in Lawa East, at 69.50 metres downhole

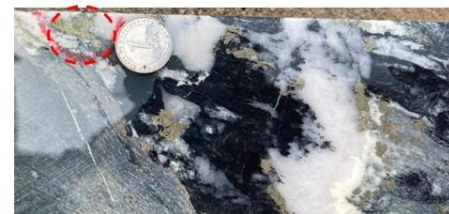
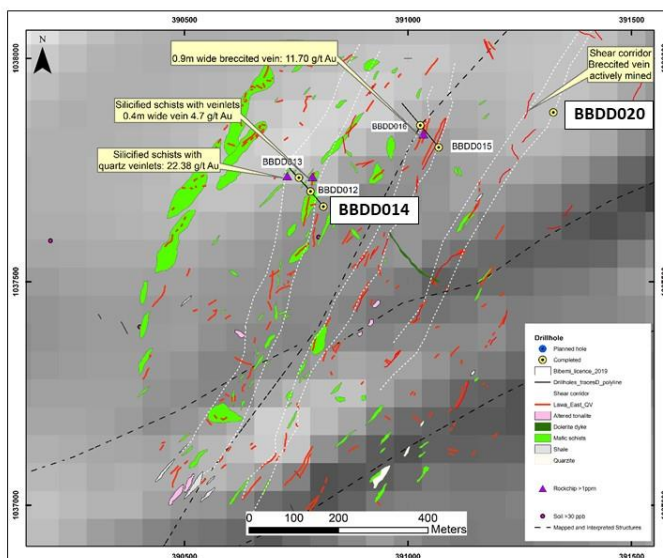
### LAWA WEST, BIBEMI PROJECT



**BBDD019:** Visible gold identified in pyrite stringer within c. 1m wide quartz-tourmaline vein at 70.90m downhole



### LAWA EAST, BIBEMI PROJECT



**BBDD014 (above) and BBDD020 (below):** Visible gold within pyrite in c.20 cm wide quartz-tourmaline veins at 72.50 metres and 69.50 metres downhole respectively

