

Table 1. Planned drill hole collar positions with drilling azimuth, drilling angle and proposed depth

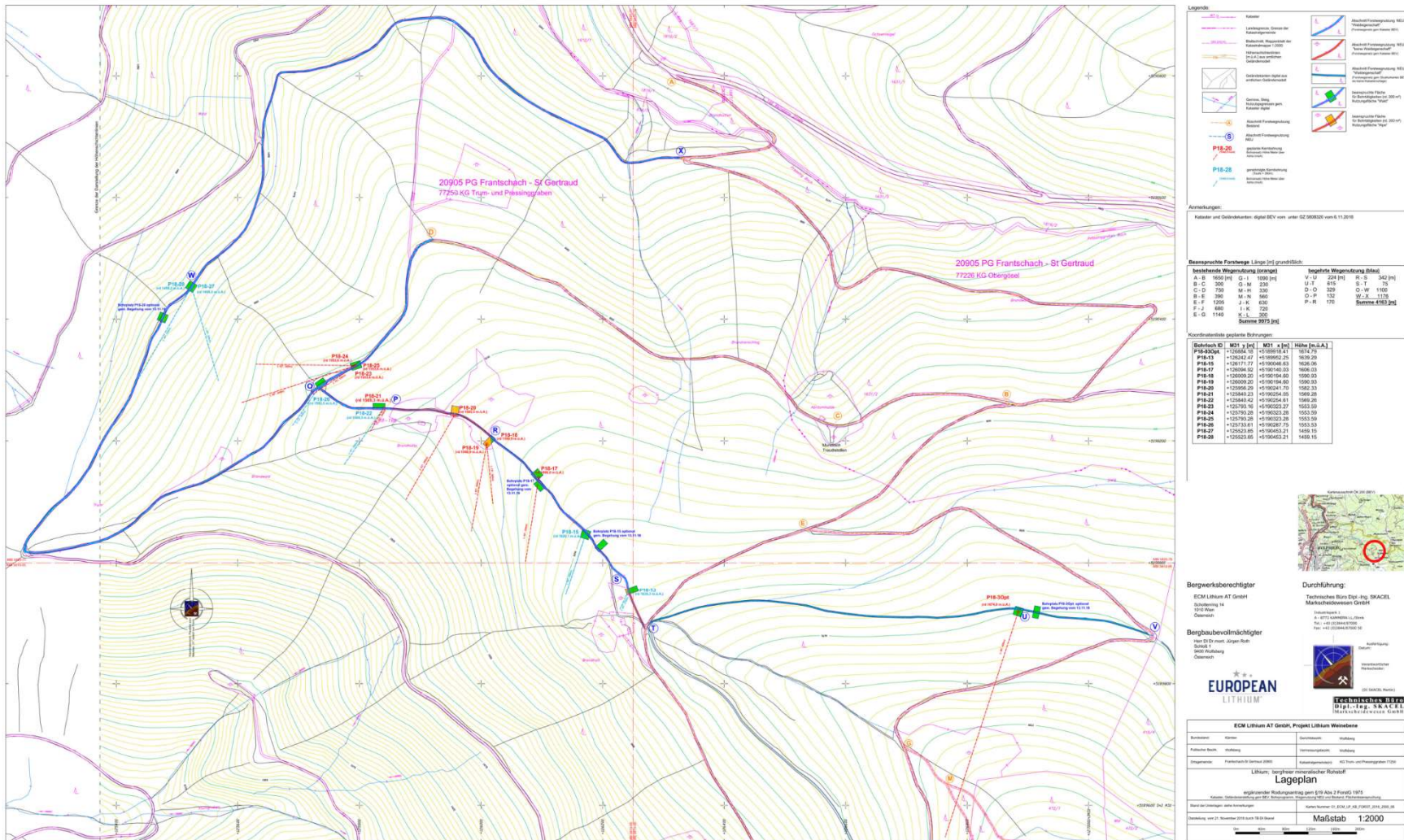
Drill hole ID	Planned Coordinated			Azimuth	Dip	Target Depth
	Easting	Northing	Elevation			
P18-01	126972	189846.174	1688.245	198	50	340
P18-02	126972	189846.174	1688.245	198	30	340
P18-04*	126798.93	190085.69	1645.1	194	38	450
P18-05*	126798.93	190085.69	1645.1	193	50	470
P18-06	126710.899	190052.084	1636.097	198	55	420
P18-09	126540.676	190052.163	1625.018	198	70	440
P18-10	126473.646	190036.051	1630.252	198	67	360
P18-11*	126435.44	190333.42	1563.35	195	33	510
P18-12	126357.65	190333.62	1559.718	197	33	470
P18-14	126255.74	190361.744	1555.178	195	33	460
P18-15**(*)	126198.11	190029.08	1631.09	215	68	280
P18-16	126255.74	190361.744	1555.178	208	39	460
P18-17*	126096.04	190126.26	1606.67	190	66	320
P18-18	126009.203	190194.6	1590.93	174	75	380
P18-19	126009.203	190194.6	1590.93	190	63	320
P18-20	125956.295	190241.701	1582.332	210	63	350
P18-21	125840.235	190254.049	1569.281	210	83	360
P18-23	125793.157	190323.27	1553.594	236	76	350
P18-24	125793.281	190323.279	1553.59	271	63	360
P18-25	125793.281	190323.279	1553.59	252	49	300

	Drill holes along forestry roads
	Drill holes along the road in „forestry property “
*	Drill holes with adjusted collar positions
**	Shallow drill hole (<300m)

Figure1: Map1



Figure 2: Map 2



Bulk Laser Sorting:

The objective of the bulk laser sorting test work was to confirm the results of the previous test work and produce sorted product for the subsequent lab and pilot test work. In all tests a scavenger sorting was conducted, to recover any spodumene misplaced to the sorter rejects from the rougher stage.

(Picture to go under narrative)



Figure 1: Laser sorter: 3D model of Laser sorter (top) and Laser sorter test rig in Tomra's technical center used for fraction +25 mm



XRT Sorting:

The use of XRT sorting as an alternative to laser sorting has been carried out. Although laser-based sorting provided excellent recovery and waste rock-rejection in the test work, it requires the ore to be pre-rinsed.



Figure 2: XRT sorter: 3D model of XRT sorter (top) and XRT sorter test rig in Tomra's technical center



