

Figure 1 showing La India Project Mineral Resource Estimate at January 2019

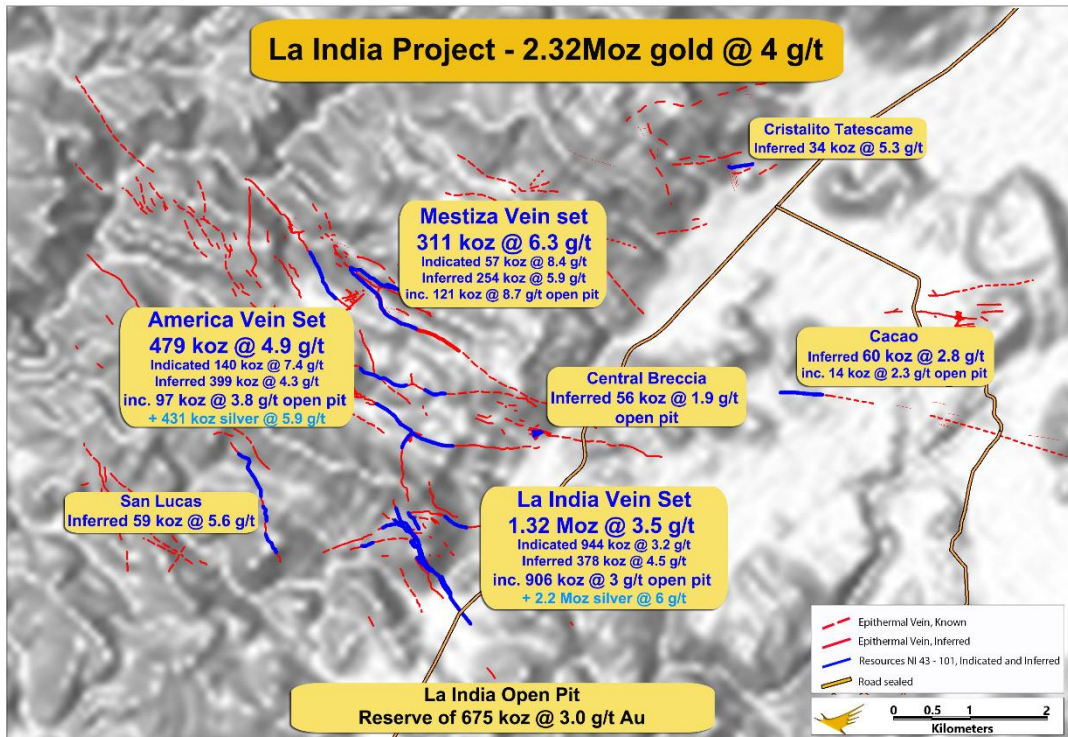


Figure 2. Map showing channel samples and rock chips taken during the reported period at active artisanal workings

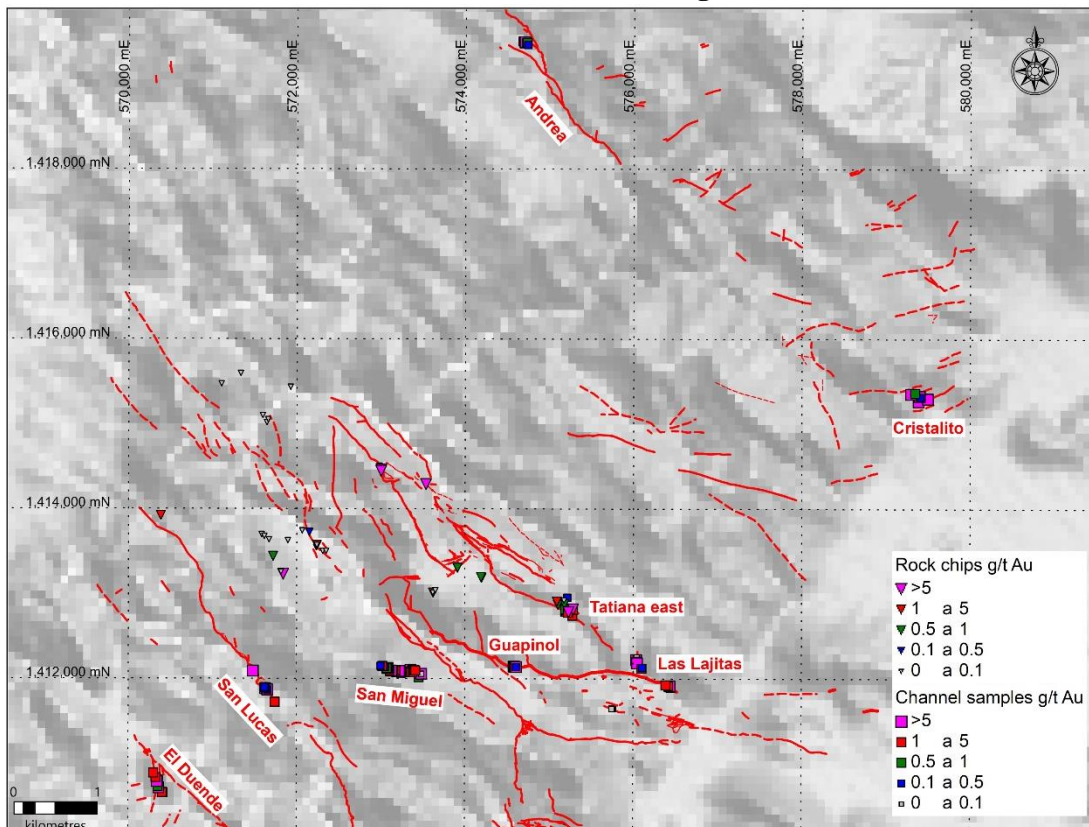


Figure 3. Map showing location of rock chip samples with anomalous Au grades. Yellow rectangles identify approximate areas of anomalous Au.

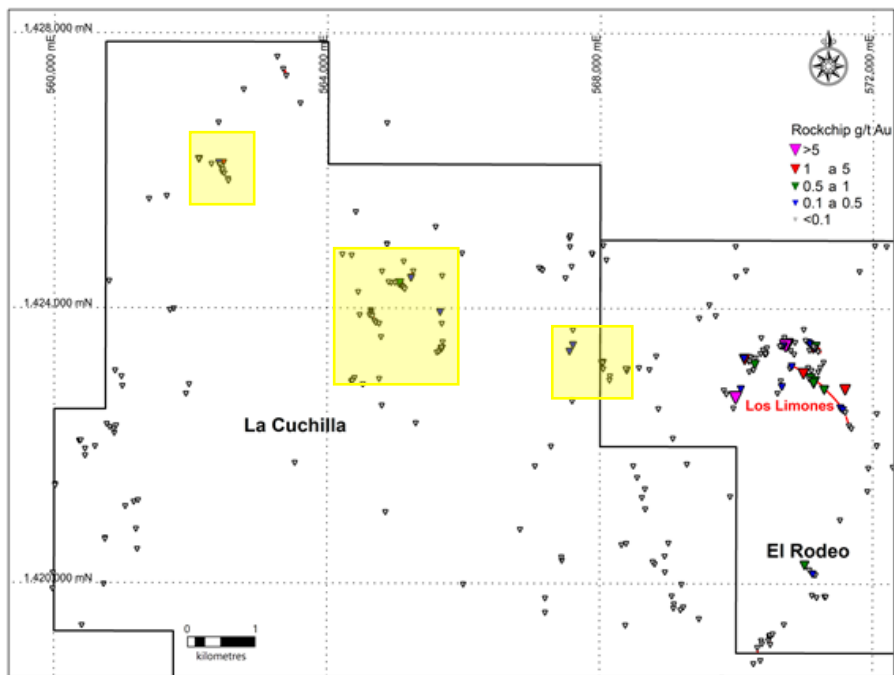


Figure 4. Map showing location of rock chip samples with Ag assay results. Yellow rectangles identify approximate areas of anomalous silver

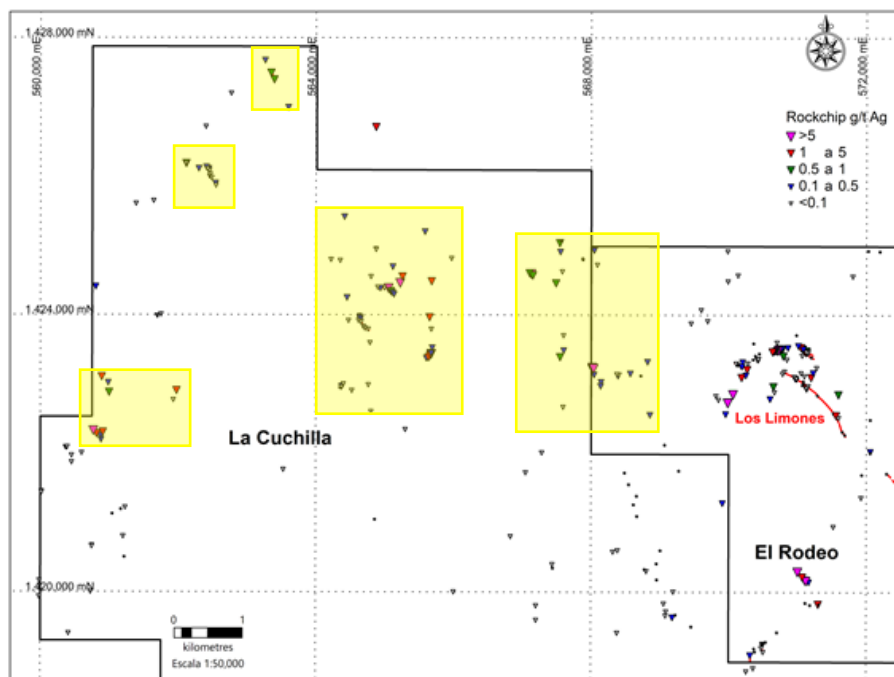


Figure 5. Location of the Los Cerritos concession on the 100% owned La India Project

