

10 November 2021

**KEFI Gold and Copper plc**  
("KEFI" or the "Company")

**Hawiah Copper-Gold VMS Project Update**

**Appendix 2: Diagrams for Hawiah Project**

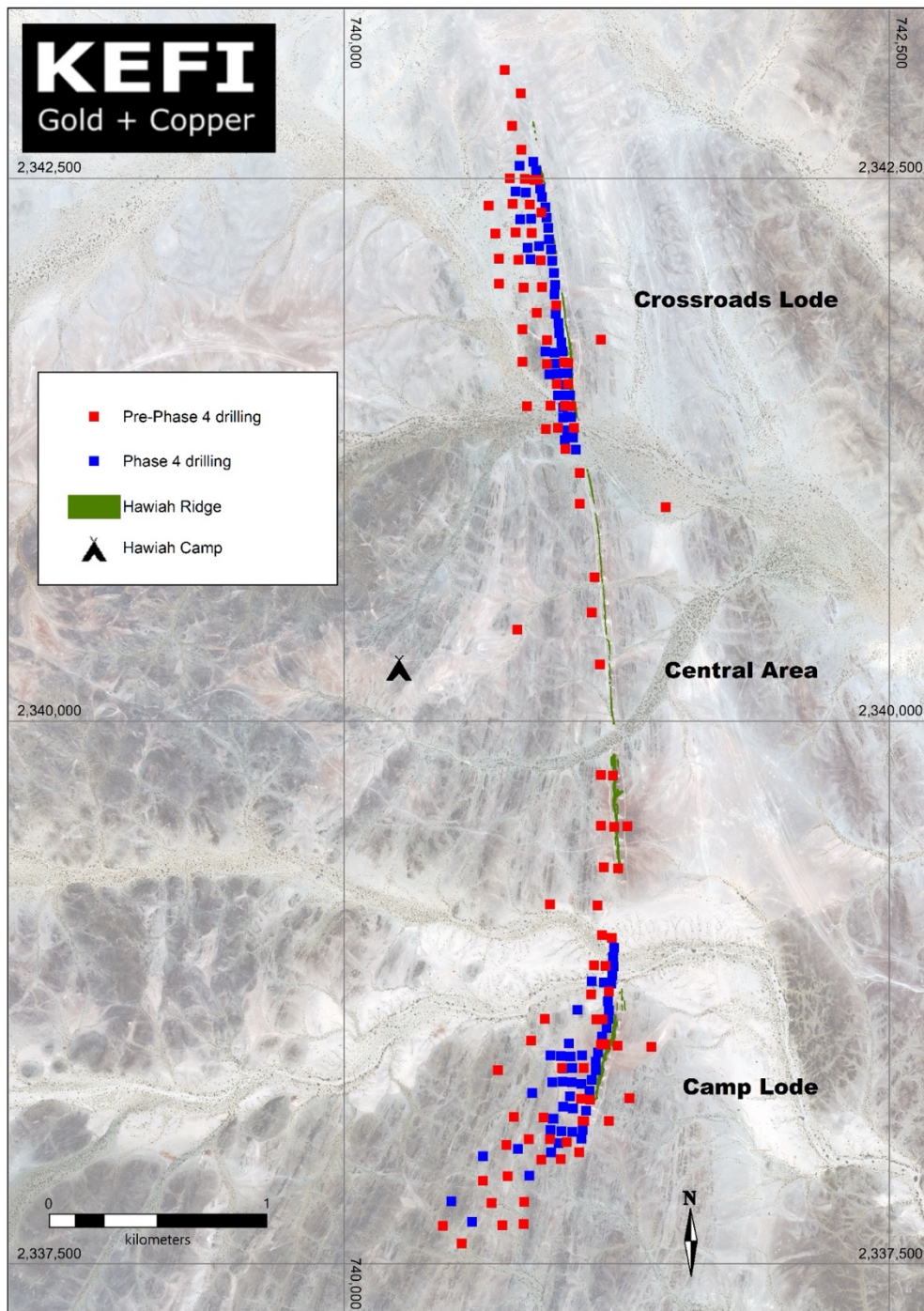


Figure 1 - Plan view of Hawiah Project showing location of diamond drill hole collars

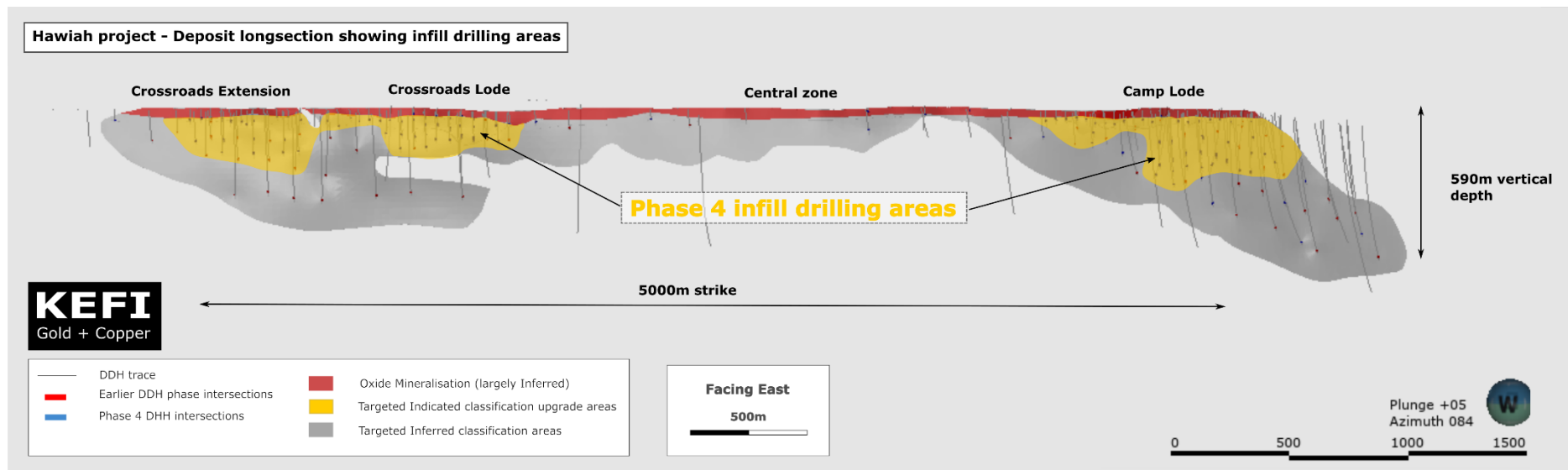


Figure 2 - Long section of the Hawiah deposit facing east, showing the areas targeted for resource classification upgrade (yellow).

# Hawiah project - Camp Lode infill drilling

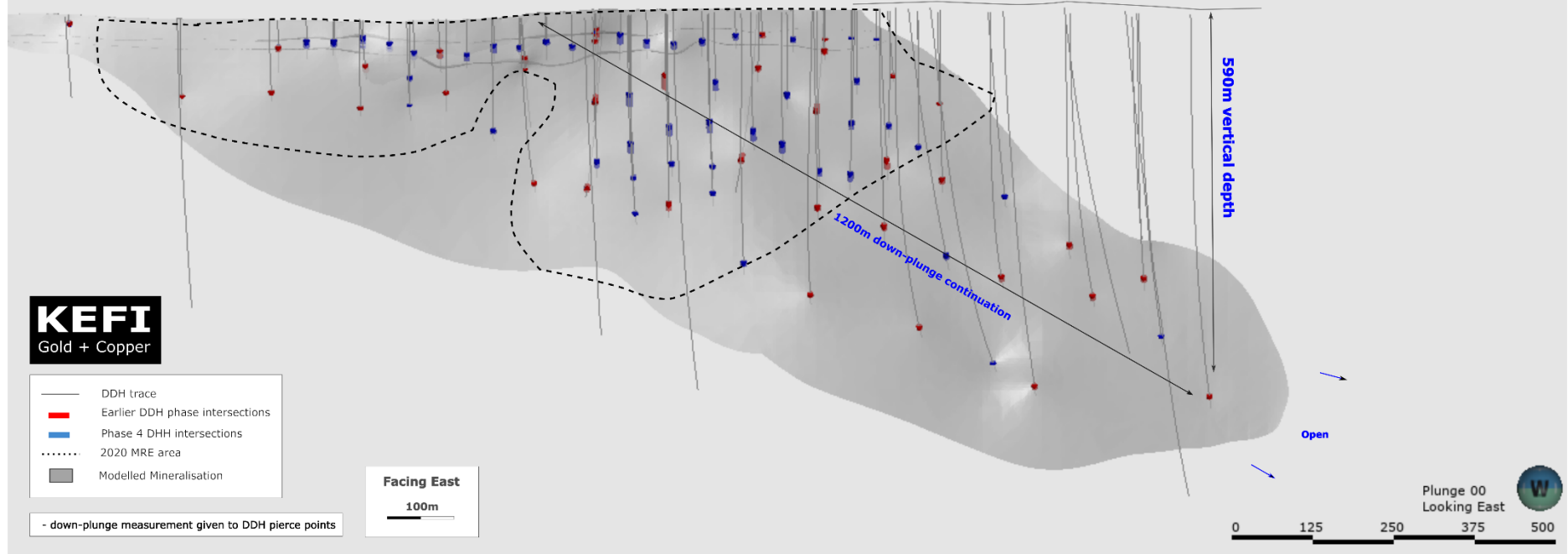


Figure 3 - Long section of the Camp Lode facing east with Phase 4 (blue) and early phase (red) massive sulphide intersections highlighted

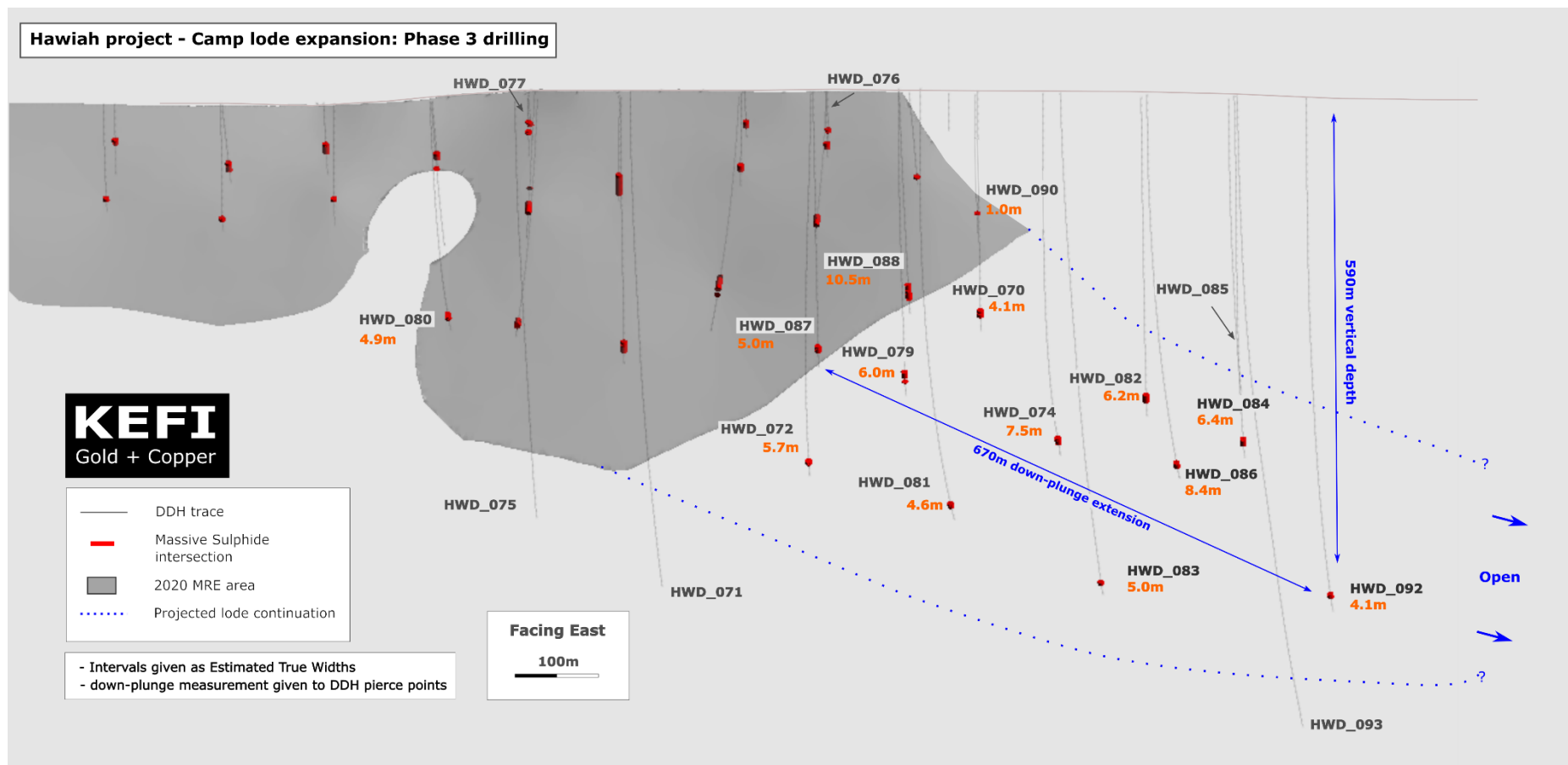


Figure 4 - Long section of the Camp Lode showing Phase 3 drilling that massive sulphide intersections highlighted that extended known mineralisation 670m down plunge

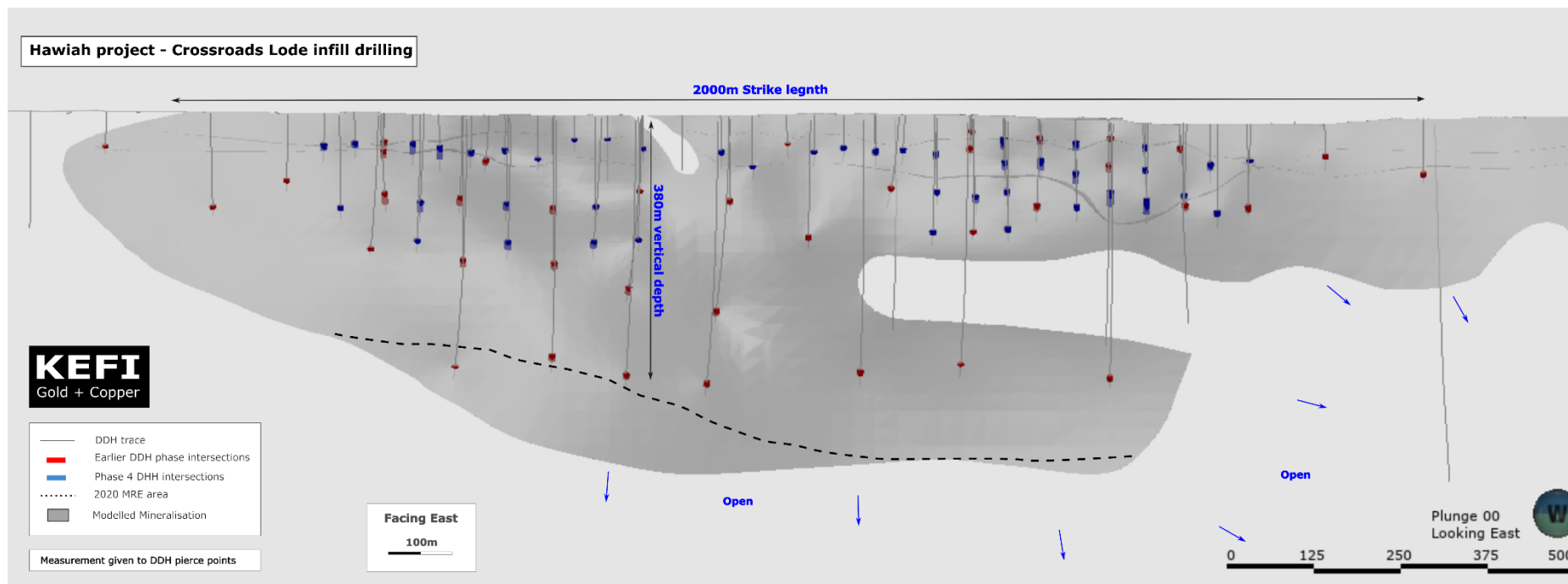


Figure 5 - Long section of the Crossroads Lode facing east with Phase 4 (blue) and early Phase (red) massive sulphide intersections highlighted