

APPENDIX 1 Graphics to:

JORC Code, 2012 Edition – Table 1 report: Ugur Deposit (Anglo Asian Mining plc)

Mineral Resource and Ore Reserve statement date: 14 August 2017

Section 2 Reporting of Exploration Results

Mineral tenement and land tenure status

APPENDIX 1.1.

CONTRACT AREA AND MAP

As of the date of execution of the Agreement, the Contract Area is the area inside the perimeter constituted by the geographical co-ordinates set forth below and as separately identified on the map attached hereto.

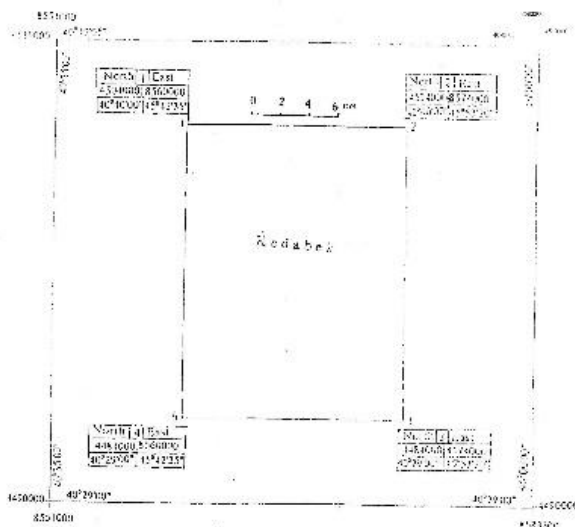
The Contract Area is bounded by straight lines on a Gauss-Kruger projection which is referenced to Pulkovo 1942 geocentric datum, Krassovskii 1940 ellipsoid and with defining parameters of:

- Latitude of Origin: 0 degrees North (the equator)
- Longitude of Origin: 3 degrees East (of Greenwich)
- Scale Factor at Origin: 1.0
- Grid co-ordinates at Origin: 300,000 meters East, 0 meters North
- Grid units are meters

Geographic co-ordinates for the four corners of the Contract Area are:

Point	Pulkovo 1942 Datum		Gauss-Kruger grid, Zona D-2	
	Latitude (North)	Longitude (East)	North (Y)	Easting (X)
1	40°40'00"	45°42'58"	4504000	8560000
2	40°40'00"	45°23'20"	4504000	8574000
3	40°29'00"	45°23'20"	4484000	8574000
4	40°29'00"	45°42'35"	4484000	8560000

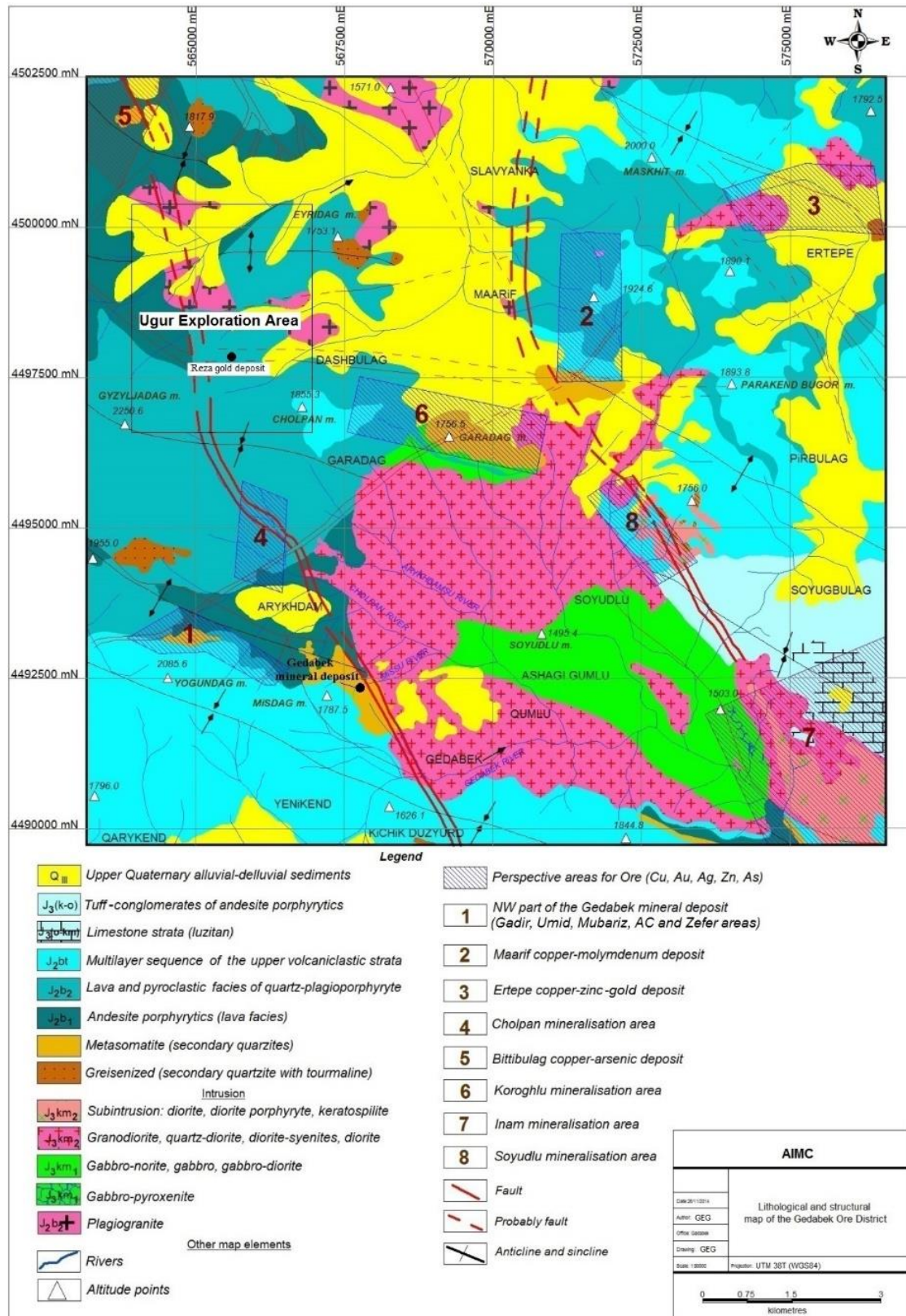
The surface of the Contract Area above defined is approximately 200 square Kilometres.



Section 2 Reporting of Exploration Results

Geology

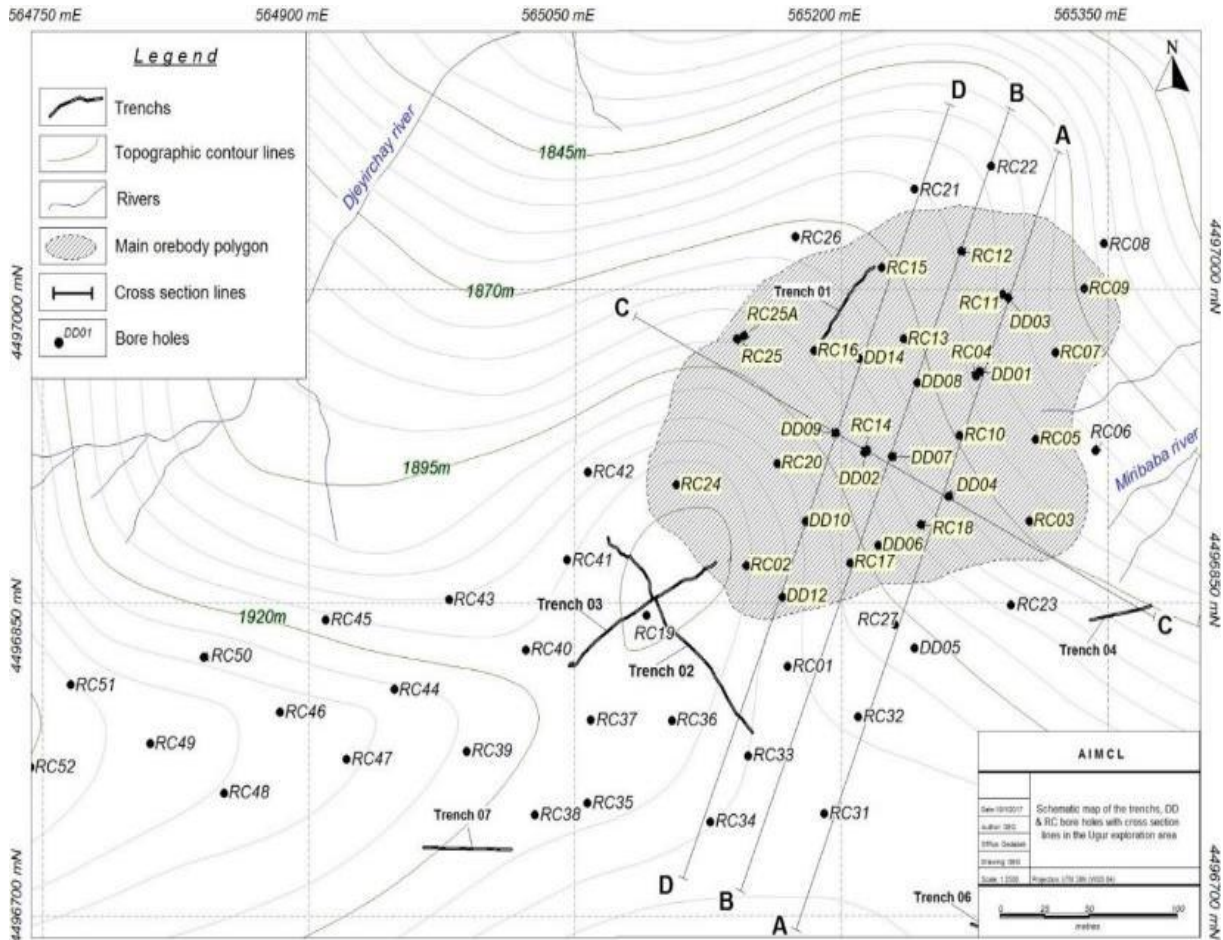
Geological map showing the Ugur Exploration Area



Section 2 Reporting of Exploration Results

Diagrams

Plan to show Phase 1 drillholes, trench locations and section lines



- LEGEND TO FOLLOWING GEOLOGICAL SECTIONS

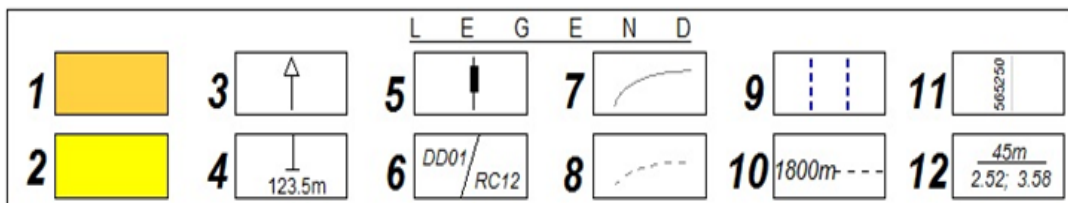
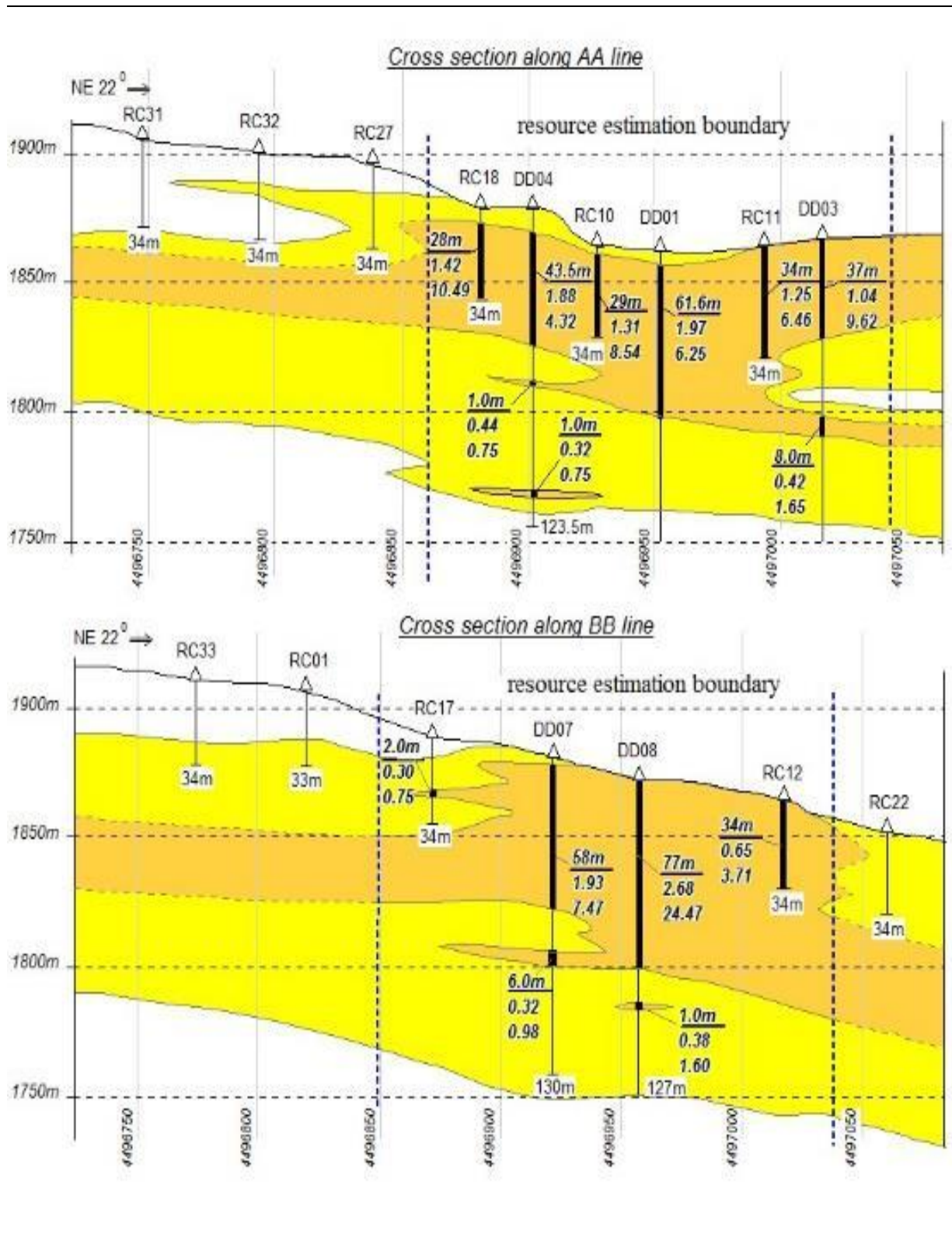


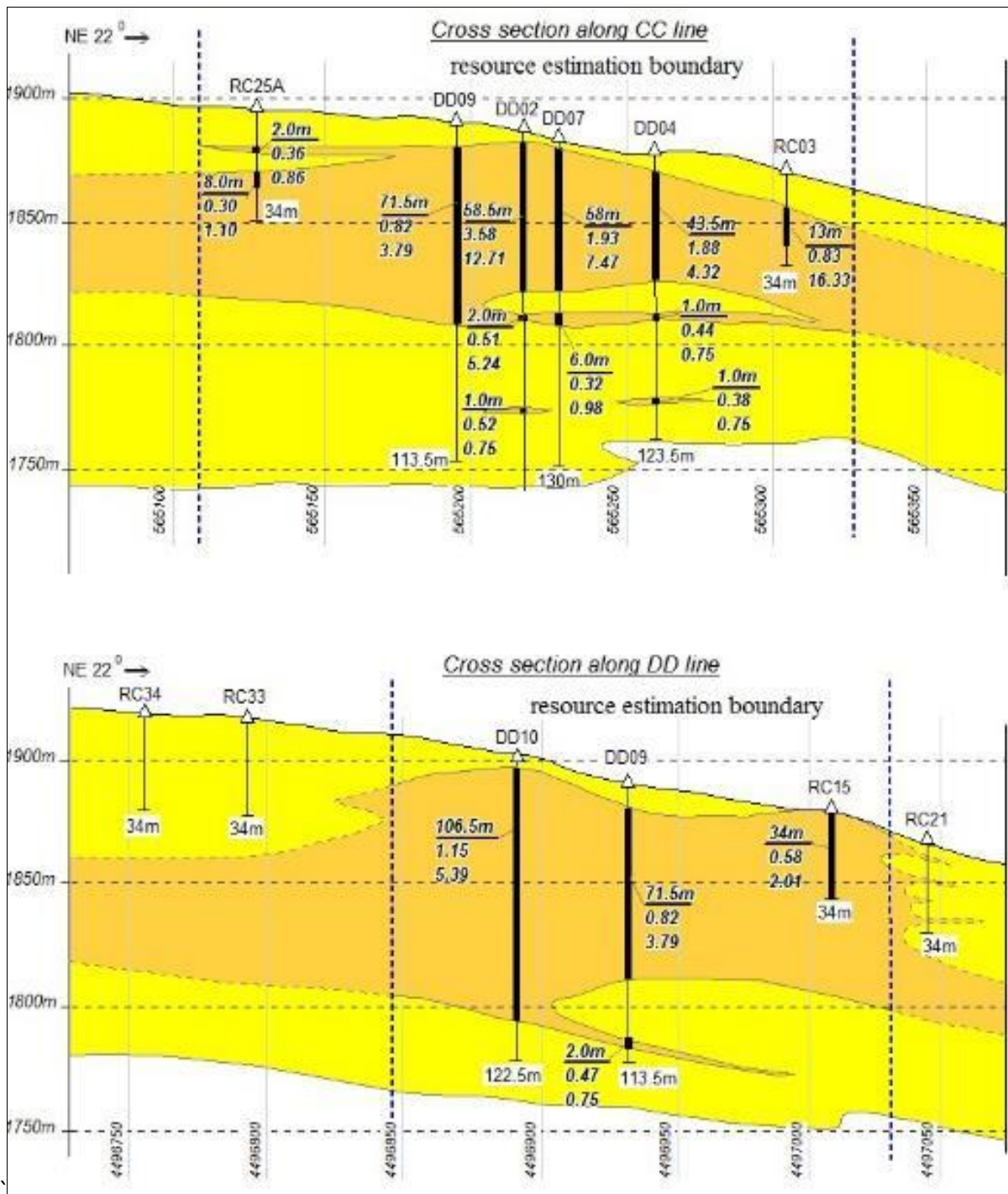
Figure 1.4-33. Orebody cross section along AA, BB, CC and DD lines (see Fig. 1.4-32).

Legend: 1. Main orebody mass ($Au > 0.29\text{ppm}$); 2. Gold trace mass ($Au = 0.08\text{ppm} < \text{gold trace} < 0.30\text{ppm}$); 3. Bore holes; 4. Maximum depth of bore holes; 5. High grade gold ($> 0.29\text{ppm}$), bore holes; 6. Bore holes names; 7. Orebody contact lines; 8. Probably orebody contact lines; 9. Resource estimation boundary line; 10. Altitude; 11. Northing coordinate lines; 12. Length of mineralization zone / gold grade/ silver grade.

- Geological sections showing intersections



- Geological sections showing intersections



Section 4 Estimation and Reporting of Ore Reserves:
Metallurgical factors or assumptions

- The processing algorithm is shown below:

