

- 180km from a deep water port at Esmeraldas
- Mains Power nearby
- Local workforce
- World class roads
- Plentiful water
- 4 hour drive from Quito
- Elevation 1500m

Figure 1: Location of Cascabel project in northern Ecuador.

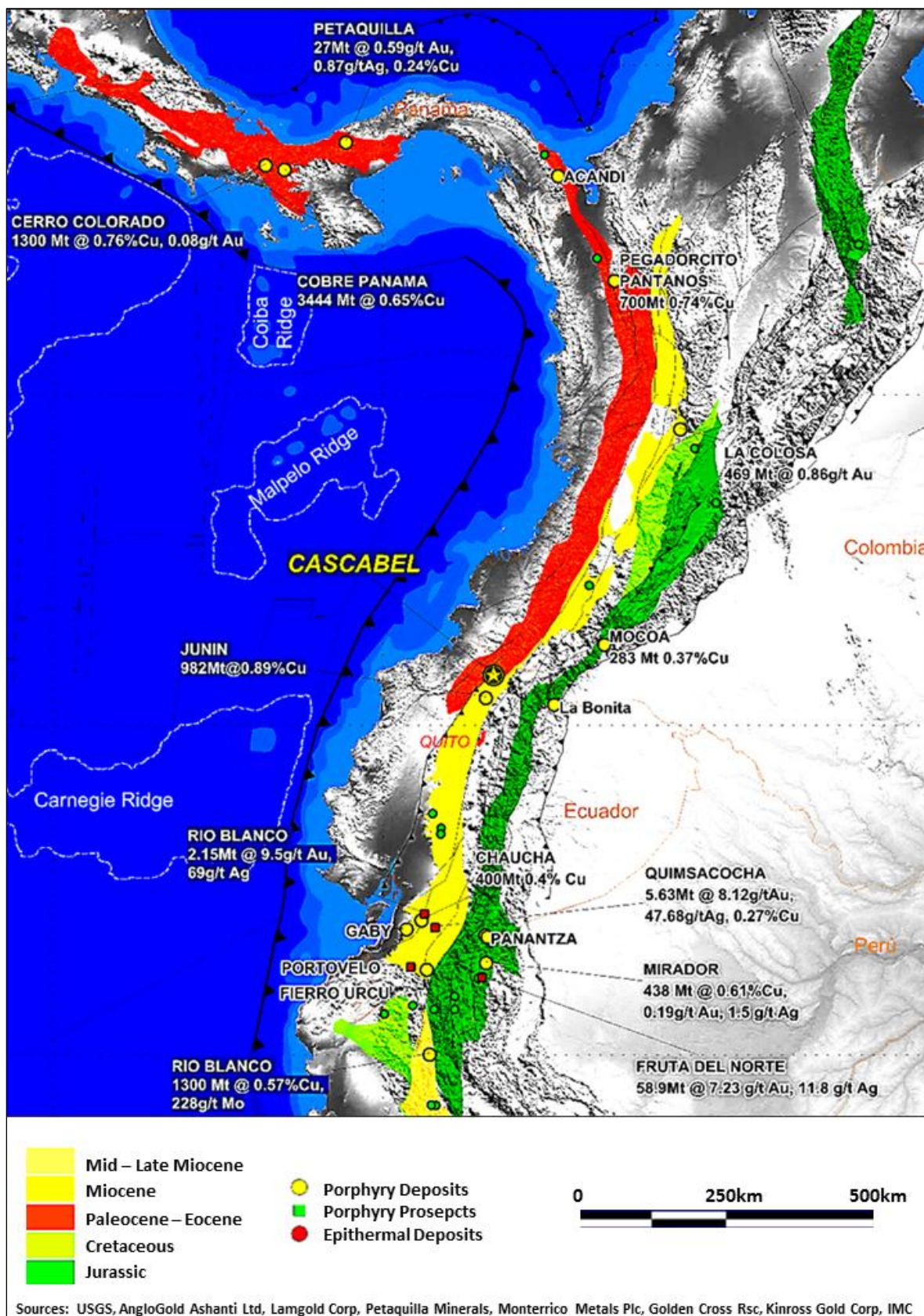


Figure 2: Regional Setting of the Cascabel Project, in the northern Andean Copper Belt.

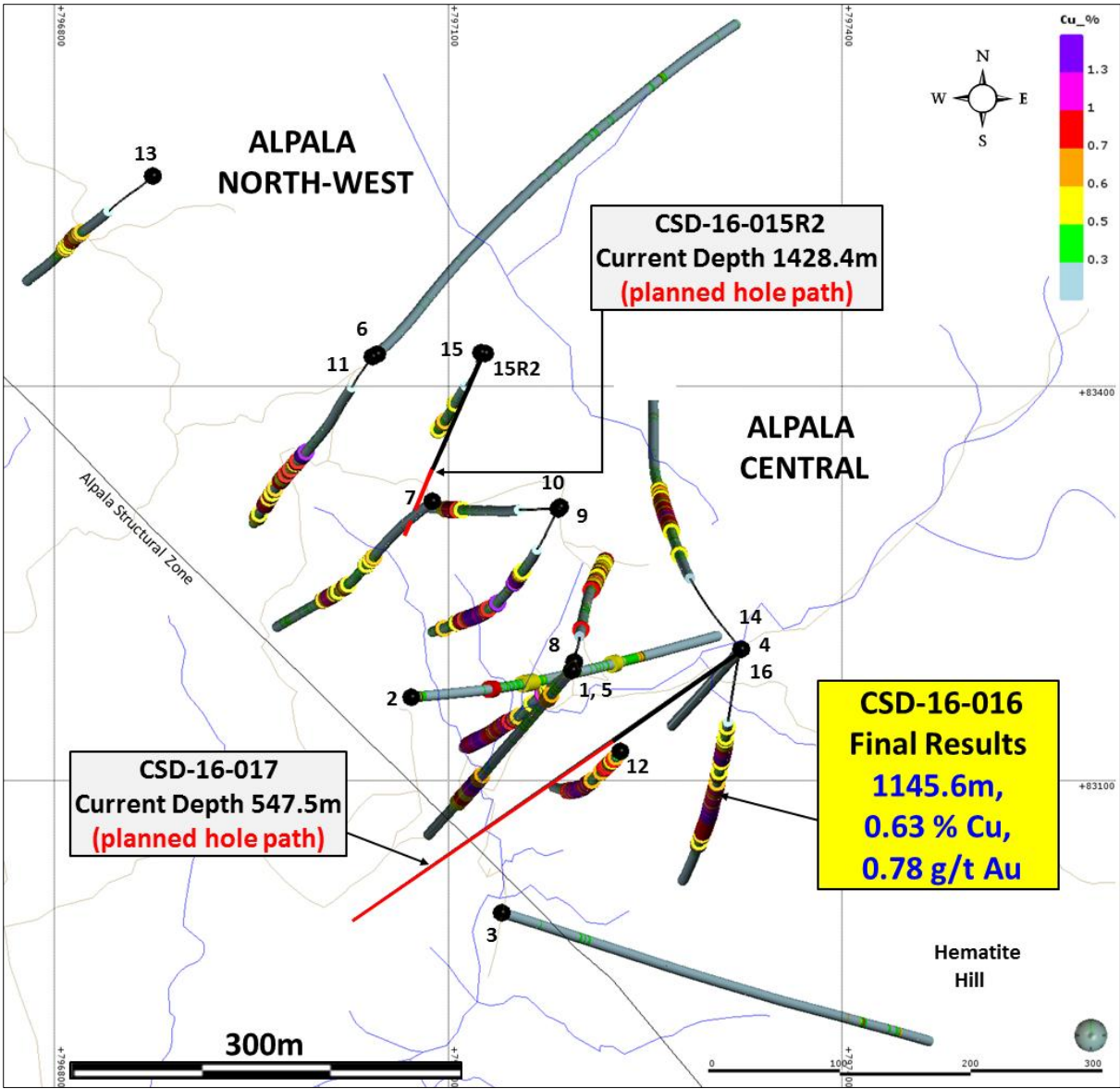


Figure 3: Drill hole location plan, Alpa.

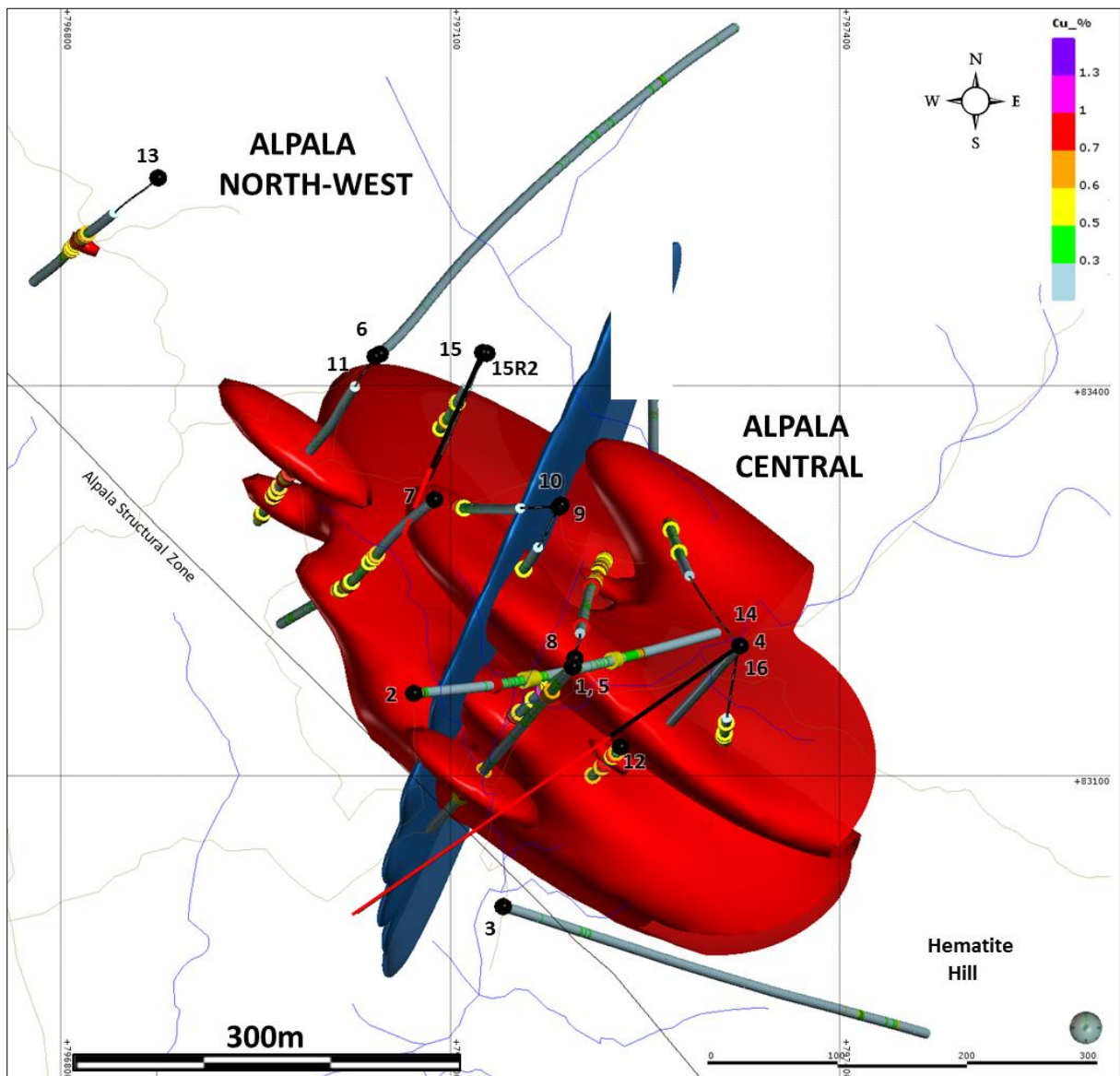


Figure 4: The Alpa deposit current extents defined at $\geq 0.7\%$ copper.

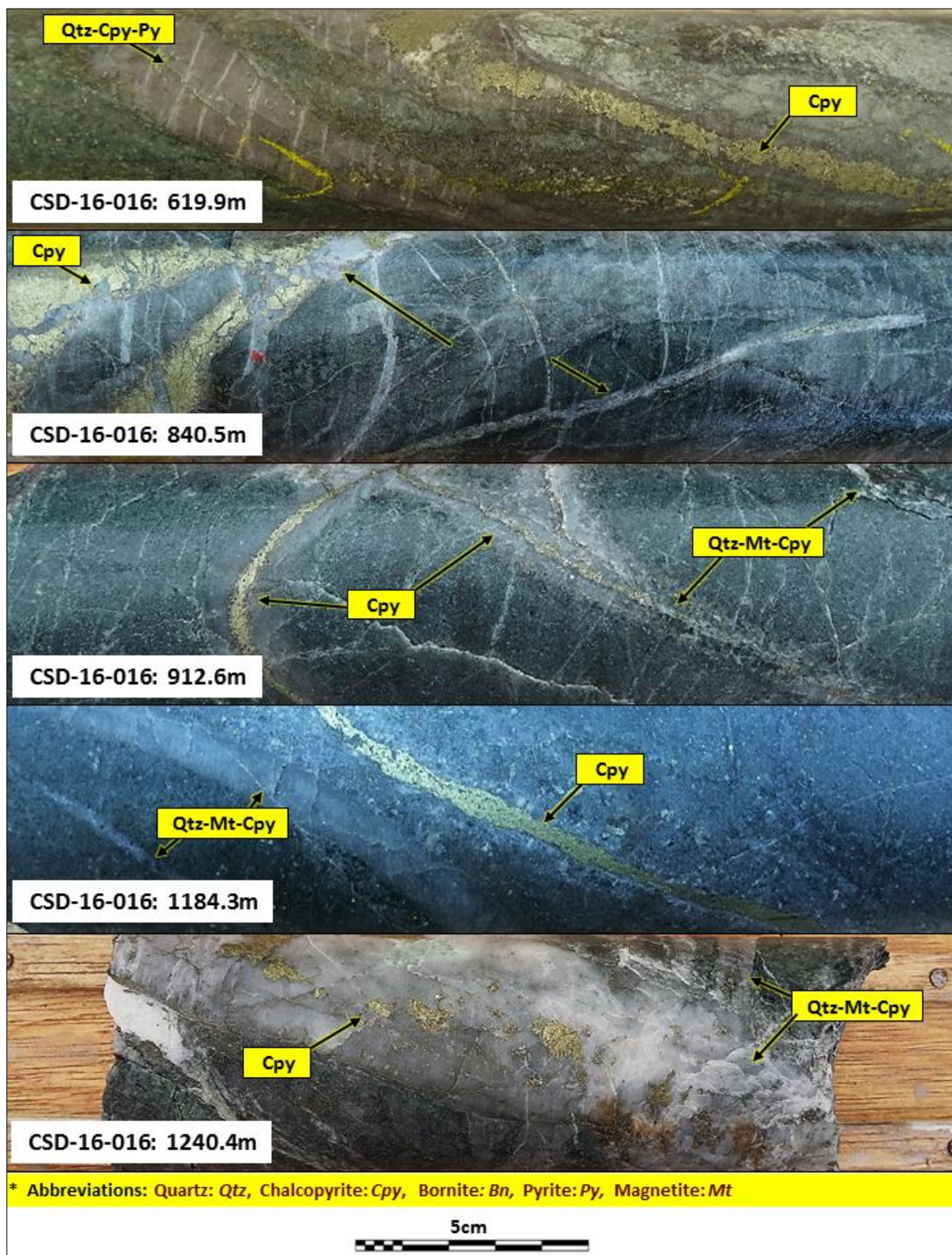


Figure 5: Examples of mineralisation encountered in Hole 16.

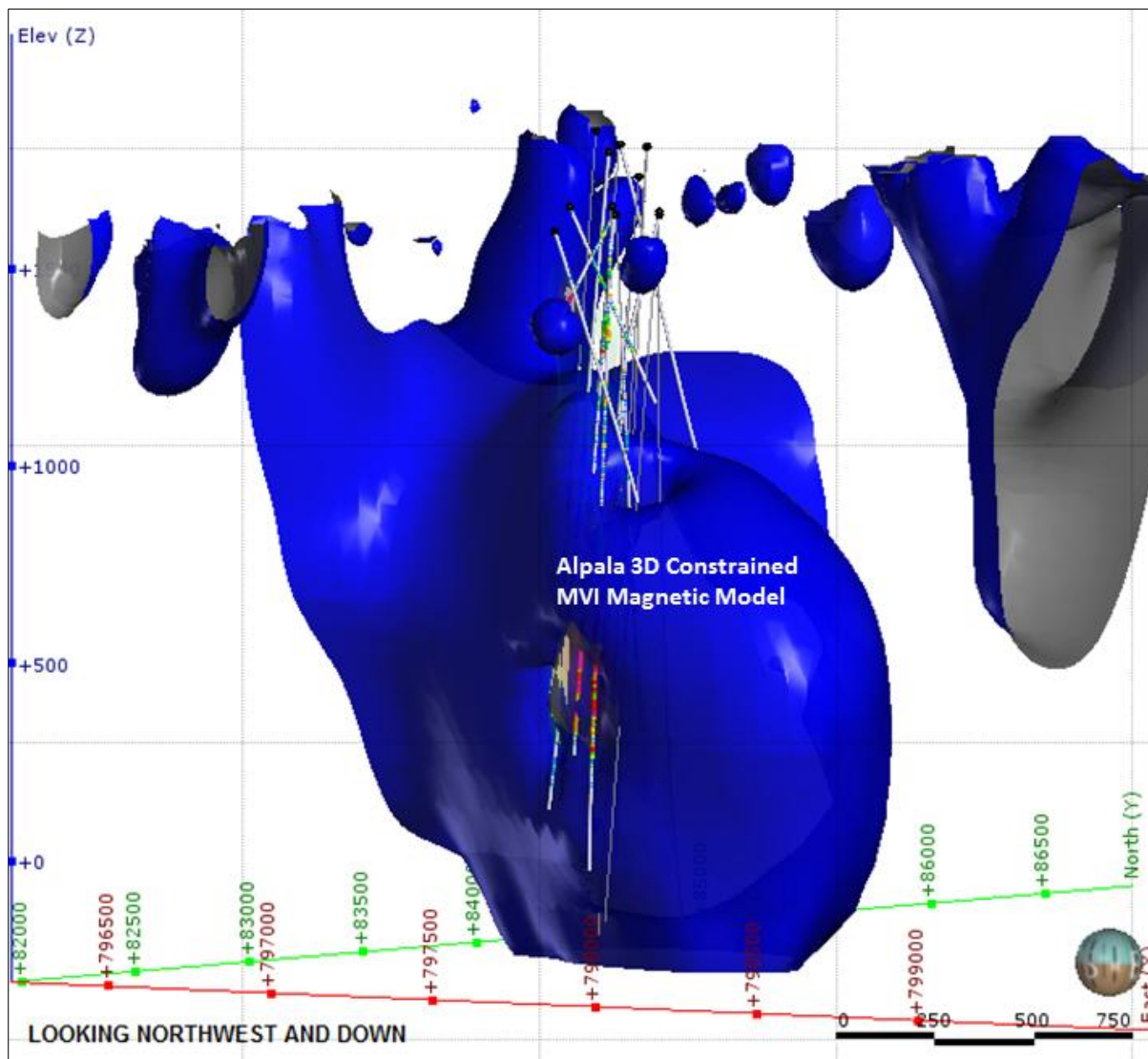


Figure 6: Alpa constrained 3D MVI magnetic model showing areas of untested magnetism surrounding the Alpa drilling area.