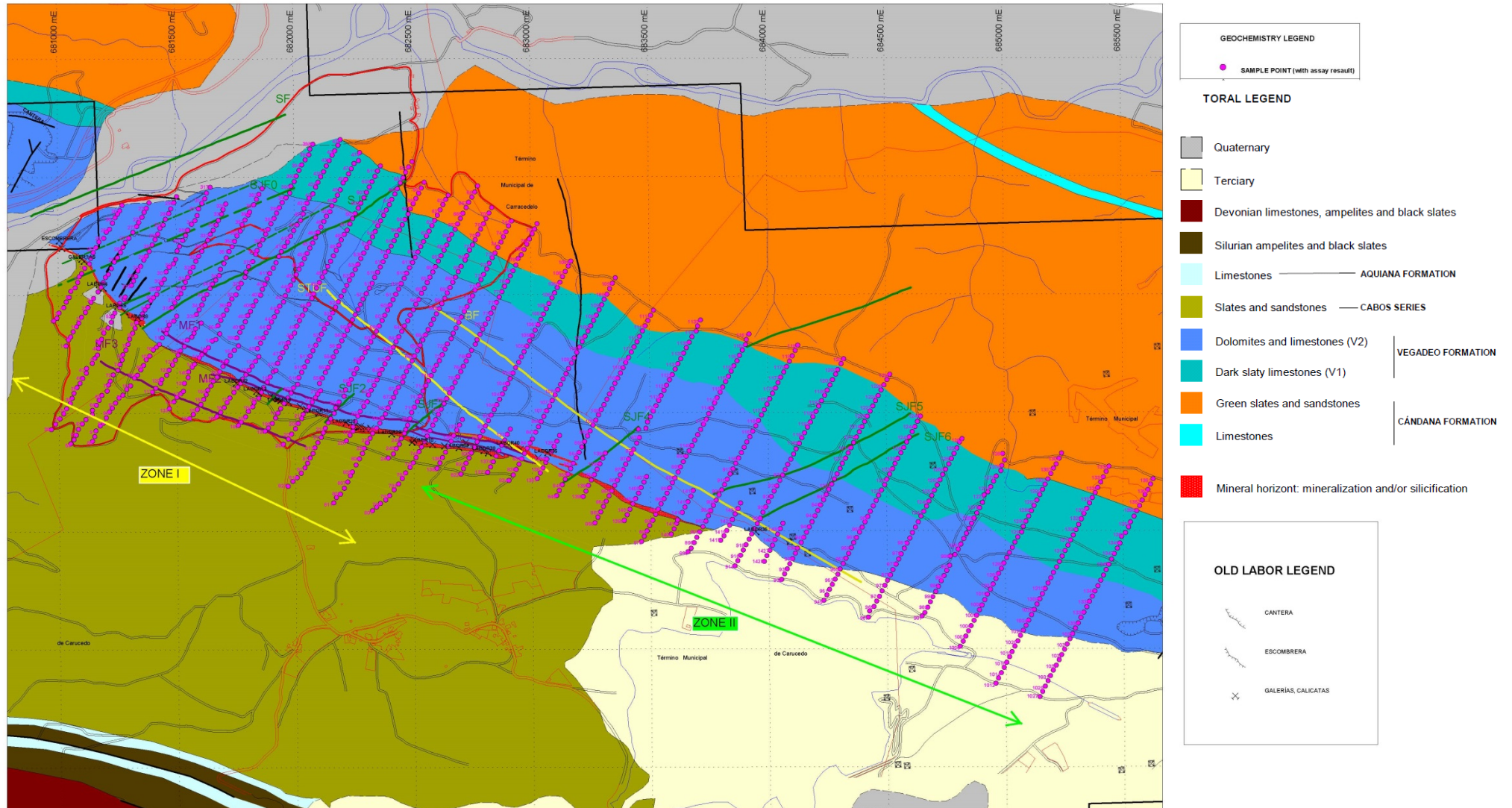


Figure 1: 2010 Geological Map produced by GoldQuest



Source: Toral Zinc-Lead Silver Project, Mineral Resource Estimate NI 43-101 Technical Report prepared by Micon International Co Limited, 30 April 2012

GOLDQUEST IBERICA	
Date: 13/03/11	P.I. TORAL GEOCHEMISTRY 2010
Author: MMQ	
Office: Toral	
Drawing: MMQ	
Scale: 1:10,000	Proyección: UTM (ED 50), HUSO 29 Cartografía del Servicio Geográfico (IGN)

Figure 2: Geochemical Map of Zone 1 and 2 Displaying Zinc Isolines - Map A

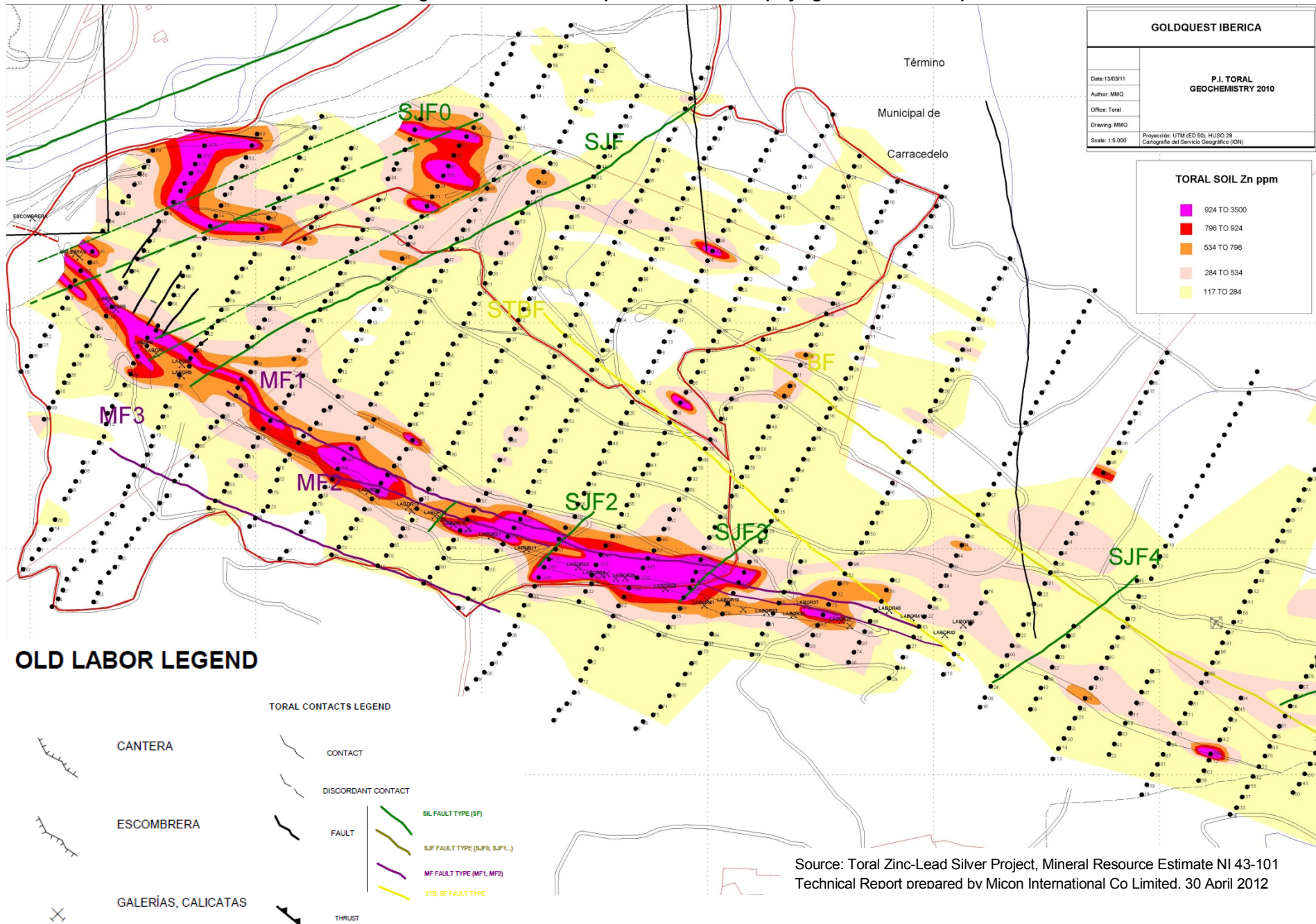
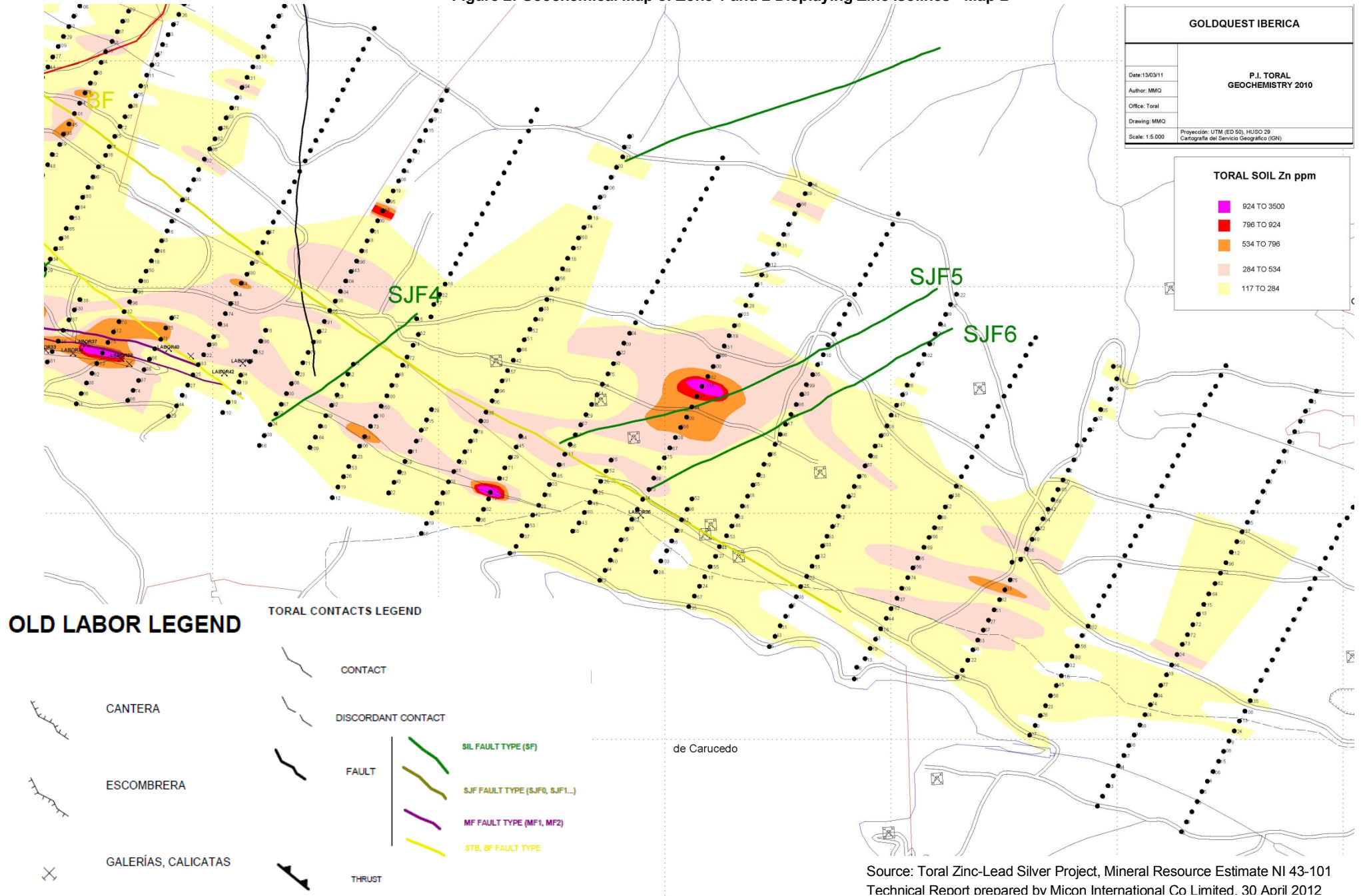


Figure 2: Geochemical Map of Zone 1 and 2 Displaying Zinc Isolines - Map B



Source: Toral Zinc-Lead Silver Project, Mineral Resource Estimate NI 43-101
 Technical Report prepared by Micon International Co Limited. 30 April 2012

Figure 3: Geochemical Map of Zone 1 and 2 Displaying Lead Isolines - Map A

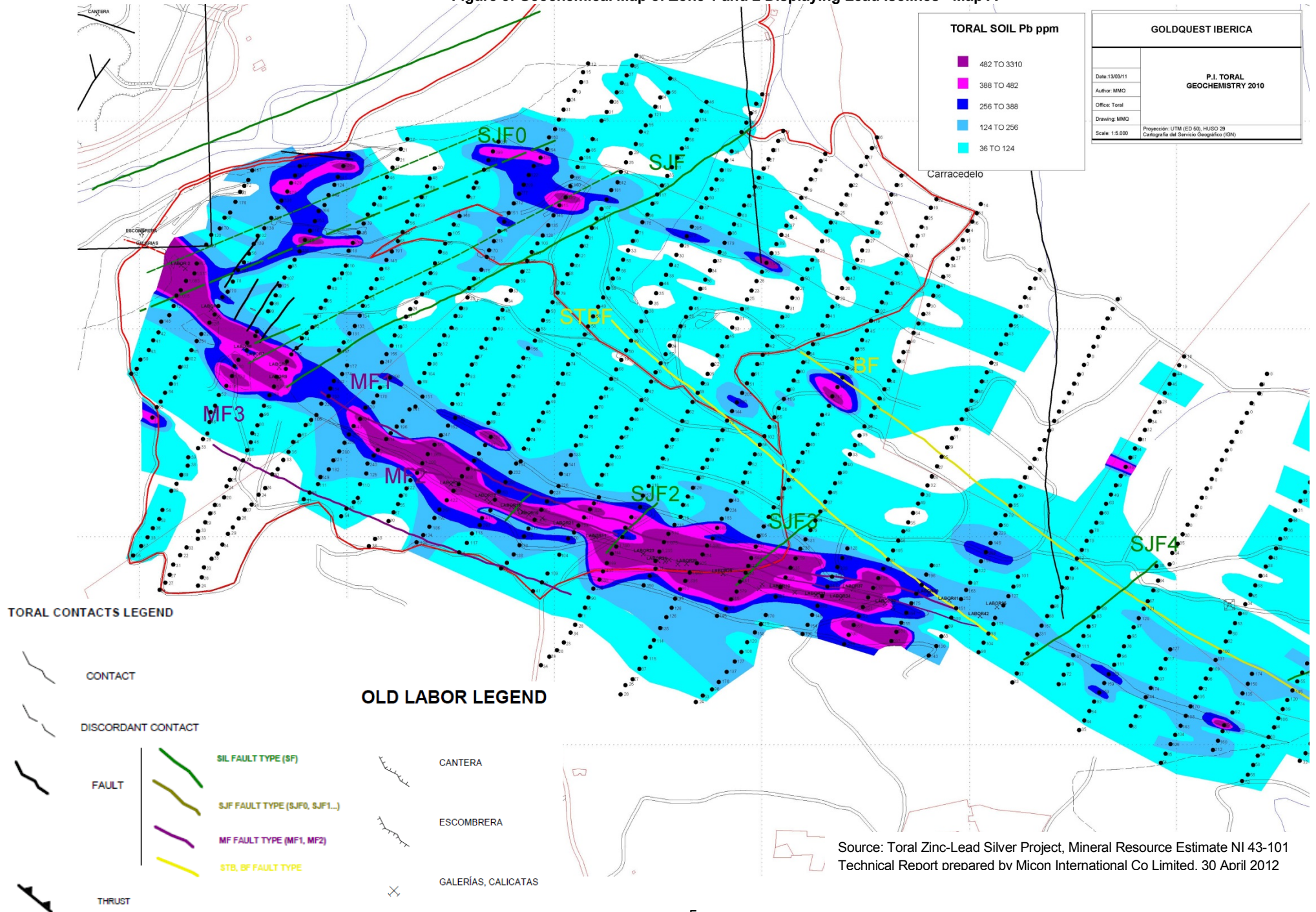


Figure 3: Geochemical Map of Zone 1 and 2 Displaying Lead Isolines - Map B

