

Figure 1. Location map of the Laboum gold project in northern Cameroon



Figure 2. Location map of the Landou prospect and quartz veins (area of interest)

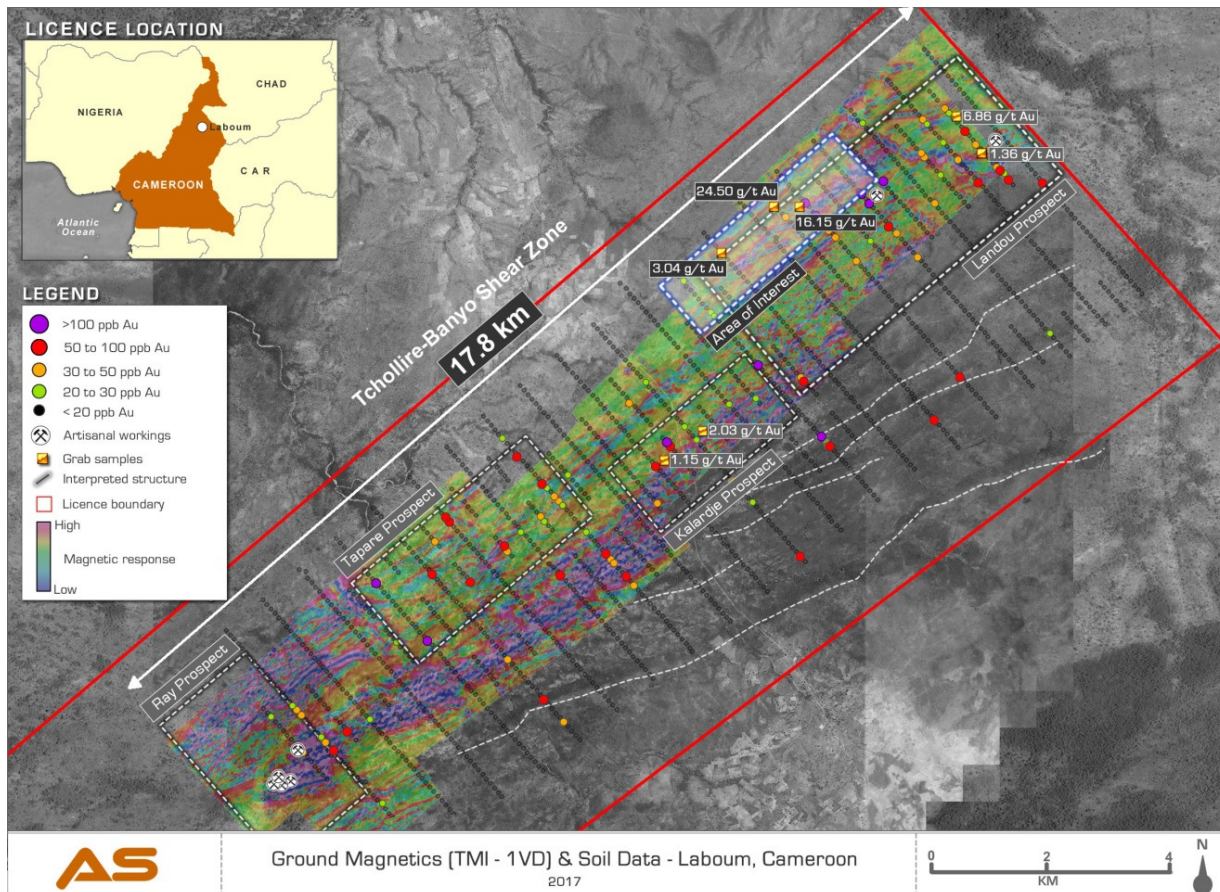


Figure 3. Geophysics map showing the quartz veins and grab sample results

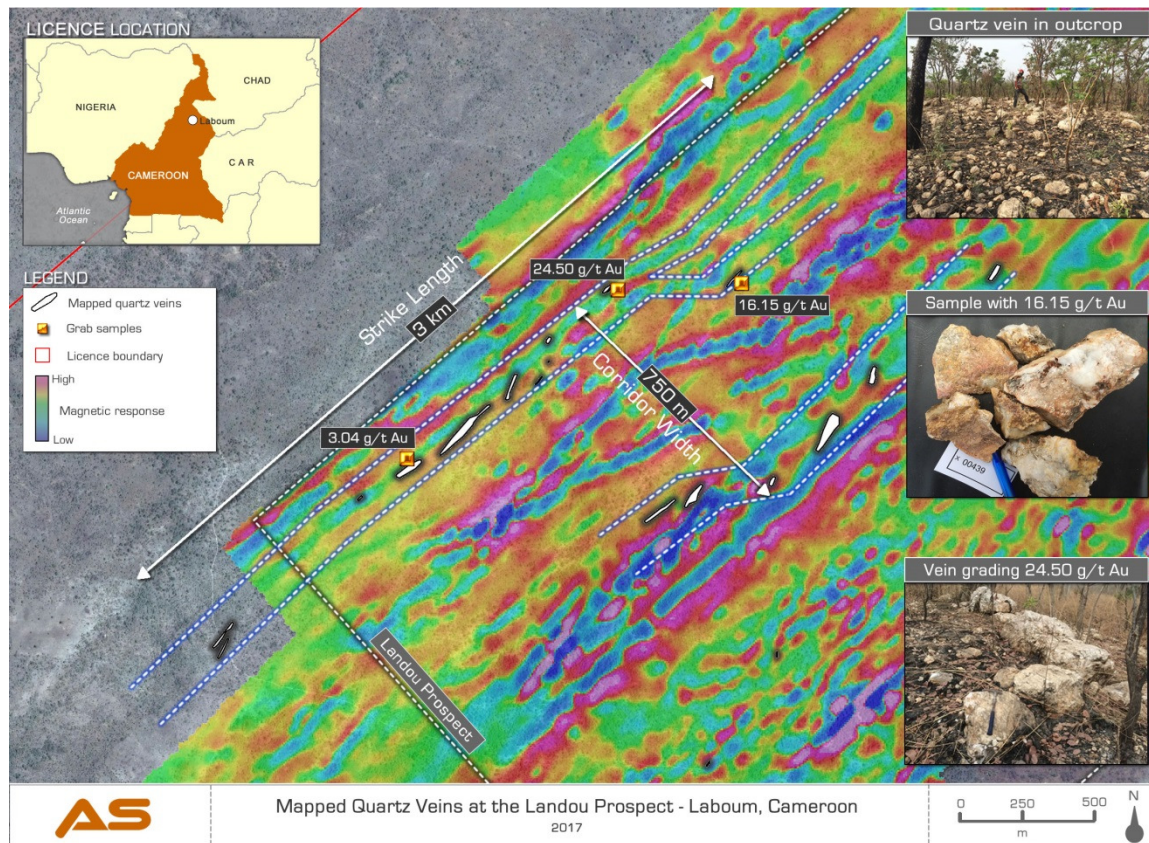


Figure 4. Photos of quartz veins and gold bearing grab samples



Vein #8 (sample graded 24.50 g/t)



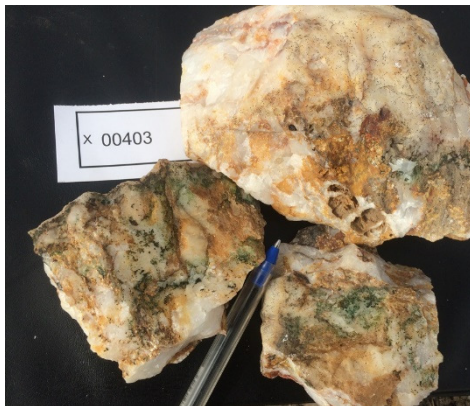
Quartz vein outcrop



Grab sample grading 24.50 g/t Au (vein #8)



Grab sample grading 16.15 g/t Au (vein #10)



Grab sample grading 3.04 g/t Au (vein #2)



Previously sampled metasedimentary host
(6.86 g/t Au)

