



Discover, Develop & Deliver Commodities for the Future

Greenland & Finland's Mineral Wealth

Corporate Presentation – Interim Results H1 2021
September 2021

This presentation ('Presentation'), and the information contained herein, is not for viewing, release, distribution or publication into or in the United States or any other jurisdiction where applicable laws prohibit its release, distribution or publication. This Presentation is being issued by Bluejay Mining plc (the 'Company' or 'Bluejay') for information purposes only. The content of this Presentation has not been approved by an authorised person for the purposes of Section 21(2)(b) of the Financial Services and Markets Act 2000. Reliance on this Presentation for the purpose of engaging in any investment activity may expose an individual to a significant risk of losing all of the property or other assets invested. This Presentation is not an admission document or an advertisement and does not constitute or form part of, and should not be construed as, an offer or invitation to sell or any solicitation of any offer to purchase or subscribe for any shares in the Company ('Shares') in the United States or any other jurisdiction.

Neither the Presentation, nor any part of it nor anything contained or referred to in it, nor the fact of its distribution, should form the basis of or be relied on in connection with or act as an inducement in relation to a decision to purchase or subscribe for or enter into any contract or make any other commitment whatsoever in relation to any Shares. Whilst the Presentation has been prepared in good faith, no representation or warranty, express or implied, is given by or on behalf of the Company, its respective directors and affiliates or any other person as to the accuracy or completeness of the information or opinions contained in this Presentation and no responsibility or liability whatsoever is or will be accepted by the Company, its respective directors and affiliates or any other person for any loss howsoever arising, directly or indirectly, from any use of such information or opinions or otherwise arising in connection therewith. Any such liability is expressly disclaimed. The contents of this Presentation are confidential and may not be copied, distributed, published or reproduced in whole or in part, or disclosed or distributed by recipients to any other person. No reliance may be placed for any purpose whatsoever on the information or opinions contained in this Presentation or on its completeness, accuracy or fairness. Certain statements, beliefs and opinions in this Presentation are forward-looking, which reflect the Company's or, as appropriate, the Company's directors' and/or proposed directors' current expectations and projections about future events. By their nature, forward-looking statements involve a number of risks, uncertainties and assumptions that could cause actual results or events to differ materially from those expressed or implied by the forward-looking statements. These risks, uncertainties and assumptions could adversely affect the outcome and financial effects of the plans and events described herein. Although reasonable care has been taken to ensure the facts stated in this Presentation are accurate and that the assumptions expressed are fair and reasonable the information in this Presentation, which includes certain information drawn from public sources, does not purport to be comprehensive, and has not been independently verified and is liable to change. The date of this Presentation is November 2016. Forward-looking statements contained in this document regarding past trends or activities should not be taken as a representation that such trends or activities will continue in the future. The Company does not undertake any obligation to update or revise any forward-looking statements, whether as a result of new information, future events or otherwise. You should not place undue reliance on forward-looking statements, which speak only as of the date of this document. Recipients should not treat the contents of this Presentation as advice relating to legal, taxation or investment matters, and are to make their own assessments concerning these and other consequences of the various investments, including the merits of investing and the risks. Recipients are advised to conduct their own due diligence. Accordingly, recipients should note that the Brokers are neither advising nor treating as a client any other person and will not be responsible to anyone other than the Company for providing the protections afforded to clients of the Brokers under the COBS nor for providing advice in relation to the proposals contained in this Presentation. The promotion of the Shares and the distribution of this Presentation in the United Kingdom are restricted by law. Accordingly, this Presentation is directed only at (i) persons outside the United Kingdom to whom it is lawful to communicate it, or (ii) persons having professional experience in matters relating to investments who fall within the definition "investment professionals" in Article 19(5) of the Financial Services and Markets Act 2000 (Financial Promotion) Order 2005, as amended (the 'Order'), or (iii) high net worth companies, unincorporated associations and partnerships and trustees of high value trusts as described in Article 49(2) of the Order and any other persons who fall within other applicable exemptions under the Order (together, 'Relevant Persons'). Any investment or investment activity to which this Presentation relates is available only

to, and will be engaged in only with, Relevant Persons. This Presentation must not be acted on or relied on by persons who are not Relevant Persons. You represent and agree that you are a Relevant Person. In receiving any information relating to the Company (whether in written or oral form), including the information in this Presentation, you will be deemed to have represented and agreed for the benefit of the Company and the other legal and financial advisers participating in this process (i) that you will only use such information for the purposes of discussions with the Company, (ii) to hold such information in strict confidence and not to disclose it (or any discussions with any of the Company) to any person, except as may be required by law, regulation or court order, (iii) not to reproduce or distribute, in whole or in part, (directly or indirectly) any of the information in this Presentation; (iv) that you will comply with all laws applicable to possessing such information, including without limitation insider trading laws, market abuse regulations and applicable regulations and recommendations of the UK Financial Conduct Authority or any other relevant regulator, and (v) that you are permitted, in accordance with all applicable laws of all applicable jurisdictions, to receive such information. This Presentation (including its contents) is confidential and is for distribution only to a limited number of companies or persons and their professional advisers selected by the Company and its financial adviser for that purpose. It is not intended to be distributed or passed on, directly, or indirectly, to, and may not be read by, any other persons without the express written consent of the Company. This Presentation is being supplied to you solely for your information and may not be copied, reproduced, further distributed to any other person or published, in whole or in part, for any purpose. The distribution of this Presentation in certain non-UK jurisdictions may be restricted by law and therefore persons into whose possession this document comes should inform themselves about and observe any such restrictions. Any such distribution could result in a violation of the law of such jurisdictions. Neither this document nor any copy of it may, subject to certain exemptions, be taken or transmitted into Australia, Canada, Japan, South Africa, Singapore, or the US or distributed to these countries or to any national, citizen or resident thereof or any corporation, partnership or other entity created or organised under the laws thereof. This Presentation does not constitute or form any part of an offer or invitation to sell or issue or any solicitation of any offer to purchase or subscribe or otherwise acquire, any ordinary shares in the Company in any jurisdiction. No person other than Company is authorised to give any information or to make any representation other than as contained in this document and, if given or made, such information or representation must not be relied upon as having been authorised by the Company. This Presentation has been delivered to interested parties for information only and on the express understanding that they shall use it only for the purpose set out above. The distribution of this Presentation shall not be deemed to be any form of commitment on the part of the Company to proceed with any transaction. Any dispute, action or other proceeding concerning this presentation shall be adjudicated within the exclusive jurisdiction of the courts of England. All material contained in this Presentation (including in this disclaimer) shall be governed by and construed in accordance with the laws of England and Wales. Please note that the information in this Presentation has yet to be announced or otherwise made public and as such constitutes inside information as defined by Market Abuse Regulation, relevant information for the purposes of section 118 of FSMA and non-public price sensitive information for the purposes of the Criminal Justice Act 1993. You should not therefore deal in any way in the securities of the Company until after the formal release of an announcement by the Company as to do so may result in civil and/or criminal liability. Issued by Bluejay, a company incorporated in the England and Wales under number 07245568. The information in this presentation that relates to Exploration Results, Mineral Resources or Ore Reserves is based on information compiled by Mr Roderick McIlree, who is Executive Chairman of the Company and a Member of The Australasian Institute of Mining and Metallurgy. Mr McIlree has sufficient experience, relevant to the style of mineralisation and type of deposit under consideration and to the activity which he is undertaking, to qualify as a Competent Person as defined in the 2012 Edition of the "Australasian Code for Reporting of Exploration Results, Mineral Resources and Ore Reserves".

Interim Results Highlights for 6 months ending 30th June 2021

- Final permits in place to start production at Dundas
- Letter of Interest received from EXIM Bank
- Enonkoski Joint Venture and US \$20 million exploration campaign agreed with Rio Tinto
- Drilling commenced at Enonkoski
- Positive dialogue with the new Government of Greenland
- First field season completed for the Thunderstone Project
- Appointment of Mr Johannus Egholm Hansen as Non-Executive Director
- Strong ongoing cash management (£5.2m) and progress on VAT appeal
- Post-period
 - Joint Venture signed at Disko-Nuussuaq project with KoBold Metals ('KoBold'); US \$15 million.
 - Letters of Interest received from three Export Credit Agencies
 - HMRC withdraw their VAT case against the Company
 - Black Shales conditional £4 million divestment

Bluejay Investment Case

*Quality,
Dedication,
Respect &
Growth*

EUROPEAN
PRO-MINING
JURISDICTIONS &
HIGH ESG
STANDARDS

COMMODITY
BASKET TAPPING
INTO GLOBAL TRENDS
& DEMAND

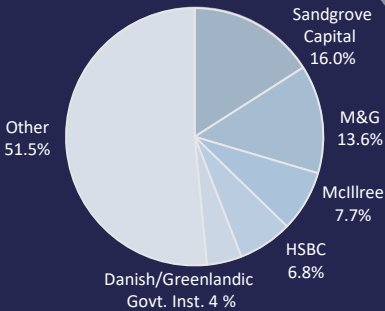
EXPERIENCED
TEAM –
LOCAL INHOUSE
TECHNICAL &
OPERATIONAL
EXPERTISE

EXECUTION
CAPABILITIES
& TRACK RECORD

EXECUTED
KEY-STRATEGIC
PARTNERSHIP &
INVESTORS

STRONG
PORTFOLIO &
PIPELINE

Shareholder structure



Strategy

1. Advance the Dundas Ilmenite Project into Production
2. Drive value through development of other existing Projects
3. Build revenue to self-fund existing and future Projects
4. Strengthen portfolio adding assets, providing exposure to multiple commodities



Listed on
London Stock Exchange
AIM Market ('JAY')
US OTC ('BLLYF') Market., and
Frankfurt ('S5WA') Exchanges.



Summary Investment Case



Meeting demand:

- **Global Trends**

Ethical, sustainable and responsible sourcing of critical Green Transition & Global Growth Metals – the Bluejay Project Portfolio.



Low-risk jurisdiction:

- **Country of Operations**

Transparent, secure, pro-mining regulated European countries with high Environmental, Social and Governance Standards as a prerequisite.



Recognised potential:

- **Greenland & Finland**

Well-endeavoured mineral-rich countries. Greenfield and Brownfield; data-rich projects. Mineral targets for drilling validated by several data types.



Exploration Projects:

- **Funded by strategic partnerships**

Deals of US \$40M announced over the last 8 months. Two large-scale exploration projects funded through JV partnerships with major renowned miner and world most renowned investors.



Advanced Project:

- **Mine fully permitted**

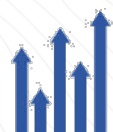
The Dundas Ilmenite Mine is fully permitted for production and in advance dialogue for Project Financing which will allow construction and commencement of production of in demand ilmenite (TiO₂).



Secure Offtake:

- **Large strategic partner**

Ilmenite customer secured for Dundas through Master Distribution offtake with large international trading & industrial conglomerate.



Growth Strategy:

- **Project Pipeline and additional resources**

The Bluejay Project Pipeline - additional strong drill-ready projects for partnership or own developments. **Additional identified ilmenite resources for additional decades of production at Dundas. An in-production Dundas transforms Bluejay into a self-funded high growth/high returning business.**



Inhouse Team:

- **Expertise on how to operate & develop**

Highly experienced business, technical and market-oriented **team with decades of know-how in country of operations.**

Exploration and development company with a premium project portfolio in Greenland & Finland

Dundas (ilmenite sands - titanium)

- Large-scale mineral sand project awaiting mine construction and commencement of production.
- Fully permitted - 30-year Exploitation Licence granted.
- Certified EIA & SIA to highest ESG standards.
- Offtake Agreement signed for up to 340,000 tpa** (80% of planned annual production).
- Advanced discussion on project financing.

CONFIDENTIAL

Disko-Nuussuaq (Ni-Cu-Co-PGM-Au)

- Potential to host a **new world class nickel deposit** – analogues to Noril'sk Nickel District.
- District-scale polymetallic multiple targets over 2,776km² licence area – potential for world-class deposits.
- Drill ready targets** with 30-year detailed historical dataset; massive nickel-sulphides runs 6.9% Ni, 0.6% Co, 3.7% Cu, 2g/t PGM*.
- US \$15M JV with KoBold Metals** on exploration & drilling activities.



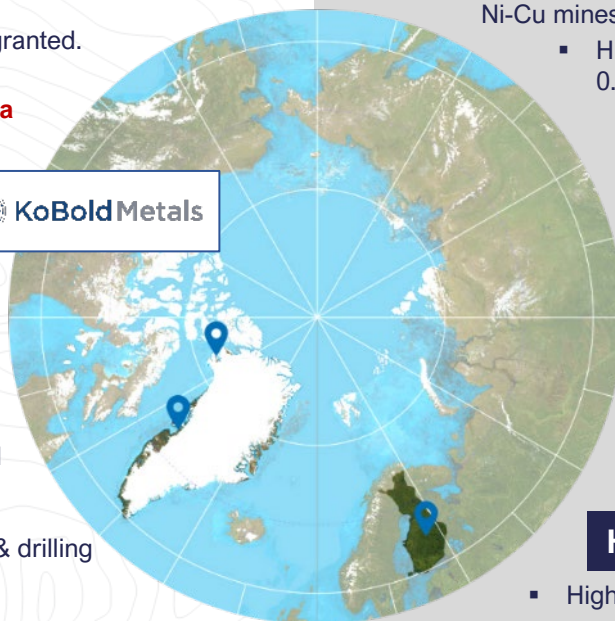
KoBold Metals

Kangerluarsuk (Zn-Pb-Ag-Cu)

- Targeting sediment-hosted Zn-Pb-Ag ± Cu deposits.
- 692km² **licence adjacent to the former high-grade Black Angel Zn-Pb-Ag mine** (produced 11.2 MT @ 12.6% Zn, 4.1% Pb and 29 g/t Ag)*.
- Drill-ready targets; drill programme ready.**

Thunderstone (Au and base metals)

- Regional scale licence (2,555 km²) – **true greenfield region; 1st phase completed.**



Enonkoski (Ni-Cu-Co-PGM)

- Bluejay licences cover entire prospective belt that hosts two former Ni-Cu mines.
- Historic drill intercepts include: 32.90m @ 4.09% Ni, 0.56% Cu, 0.17% Co and 19.70m @ 6.12% Ni, 1.94% Cu, 0.29% Co.
- US \$20M JV with Rio Tinto.**
- Drilling activities ongoing.

Rio Tinto

Outokumpu (Cu-Co-Zn-Ni-Ag-Au)

- Bluejay licences cover the majority of the Outokumpu copper belt, a **prolific mining district.**
- Several former high-grade mines – entire Outokumpu Belt produced 44Mt @ 3.1% Cu. The Outokumpu (Keretti) and Vuonos Mines produced combined 34.4 Mt @ 3.6% Cu*.
- New near-mine and along strike targets; drill ready.**

Hammashlathi (Cu-Zn-Au-Ag)

- High-grade VMS mineralisation. Bluejay licences cover **entire prospective belt.**
- Former open-pit & underground mine** produced +10 Mt @ 1.16% Cu, 1.55% Zn, 0.59 g/t Au and 5.2 g/t Ag between 1973-86*.
- Extensions to the mined orebody demonstrated by recent drilling, and several near-mine geophysical targets. **Drill ready.**

Black Shales Project (Ni-Zn-Cu-Co)

- Partial divestment** of Paltamo and Rautavaara projects in Finland to Metals One plc - cash and shares of **US \$5.5M.**
- Bluejay will appoint the technical director to the board.

Metal One Plc



Listed on London AIM ('JAY')
US OTC ('BLLYF') and Frankfurt
(('S5WA')) Exchanges.
Current Market Capitalisation of
c. £120M GBP

£/€

Strong institutional backing
& Greenlandic & Danish Government backed
institutional investors



Skilled Board, Management & Consultancy
teams. Strong experienced in-country
resources, develop and operational
expertise
linked with business and commodity market
expertise.



March 2018: Prospector and
Developer of the Year 2017 by
Government of Greenland

High ESG Standards
Trusted local partner

*Not JORC Compliant

Major Achievements & Activities to date

- 2021 Aug: **\$15M JV Agreement** w. [Bill Gates & Jeff Bezos backed KoBold Metals](#) on Disko Ni-Cu-Co-PGM-Au Project
- 2021 July: **£4M deal** on [Partial divestment of Finnish Black Shales Assets](#) w. Metal One
- 2021 July: [VAT Claim on Overseas Activities Case versus HMRC won](#) (c. £1M)
- 2021 June: [Dundas Exploitation & Closure Plans approved by Gov. of Greenland](#)
- 2020 Dec: [Offtake Master Distribution Agreement for Dundas](#) with Major Global Trading & Industrial Conglomerate
- 2020 Dec: [Mining & Exploitation Permit awarded for Dundas Ilmenite Project](#) by Government of Greenland. Includes approval of EIA, SIA, PFS and signing of IBA.
- 2020 Nov: **\$20M JV Agreement** w. [Rio Tinto on Enonkoski Ni-Cu-Co-PGM Project](#)
- 2020 Nov: [Commencement of the Public Consultation Process](#) for Dundas Ilmenite Project
- 2016 to 2019: Primary developments at Dundas, Disko, Kangerluarsuk & Finland assets
- 2016: Disko & Kangerluarsuk licences (acquired from Avannaa Exploration/Cairn Energy)
- 2015: Dundas Ilmenite exploration licence awarded to Bluejay
- 2013: FinnAust Mining licences (acquired from Western Areas)
- 2013: Team of Greenland/Finland mineral resource professionals form Bluejay

A highly experienced board and management team with market, business and technical expertise. Collectively with more than a century of experience in Greenland and Finland together with strong government relations.



Dr Bo M. Stensgaard

Managing Director, CEO



Preeminent Danish geologist with extensive geological knowledge and operational experience in Greenland. Previously senior research scientist and senior advisor to multiple European federal and commercial entities in the field of commodity development.



Rod McIlree

Executive Chairman



Former CEO of Greenland Minerals Ltd (ASX:GGG) and Bluejay Mining Plc. Geologist with more than 25 years' experience in both the resources and financial sectors with 15 years proven operating experience in Greenland.



Mike Hutchinson

Non-Executive Director



A deep understanding of commodities and metal trading, with extensive corporate experience. Has a wealth of specialised operational experience, particularly in Greenland, and an esteemed network of contacts.



Peter Waugh

Non-Executive Director



More than 30 years' experience in the global titanium dioxide industry. Responsible for leading efforts to establish Bluejay as a significant global supplier of ilmenite for the titanium dioxide industry.



Johannus Egeholm Hansen
Non-Executive Director



Faroese/Danish lawyer with over 30 years' experience in large construction projects, engineering, banking and equipment supply. Has worked as Senior Vice President of the FLSmidth Group and Country Head of FLSmidth Indonesia. Have been central in the planning and development of ongoing airport construction projects in Greenland.



Eric Sondergaard

COO, Bluejay Mining plc



Geologist with over a decade on-ground exploration and operational experience in challenging conditions and remote locations. Strong knowledge and experience with permitting regulations required by Greenlandic authorities. Led the technical development of Greenland Minerals Ltd's Kvanefeld project in South Greenland, leading to a world-class mineral resource



Kevin Sheil

Corporate Development & Strategy, Bluejay Mining plc



A capital markets veteran (over 30 years) Experience across a number of sectors. Previously at the London Stock Exchange, corporate broking with HSBC, Credit Lyonnais and Barclays. Sector specialist at Credit Suisse and Citi. Head of Multi-Product Sales at Citi followed by over nine years as a Long-Short Equity Fund Manager.



Hans Jensen

Managing Director, Dundas Titanium A/S



More than 30 years of experience managing and operating in Greenland and has undertaken a variety of large logistical and supply chain operations. Have previously held senior roles in the largest Greenlandic transportation and logistics companies in Greenland. Wide network to Greenland stakeholders, communities, business and politicians. Former Greenlandic resident.



Thomas Levin

COO, FinnAust Mining Finland Oy



Geologist with more than 15 years of experience in exploration and project management. Have previously been working as a researcher at Åbo Akademi University and project manager at AB Scandinavian Geopool. Extensive network to the Finnish mining and exploration community.



Olga Solovieva

GIS & Database Manager



Geologist and GIS specialist with significant practical experience both in office and field environments. Strong background from both the mineral and hydrocarbon background on handling, processing and visualization of geological and spatial data.

Why Greenland & Finland?

- Strong Resource Potential, Stable and High ESG Standards -

GREENLAND

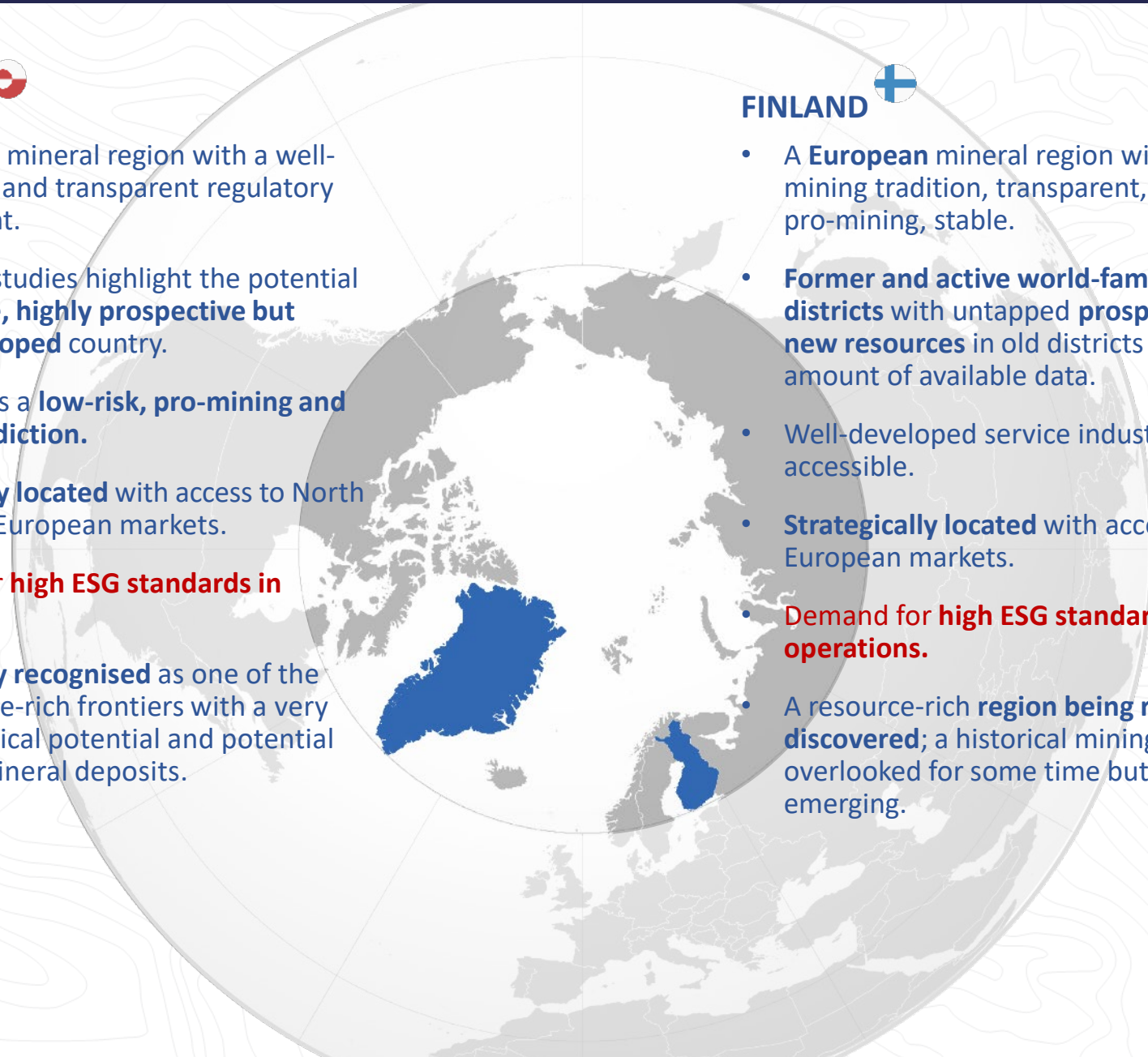


- A **European** mineral region with a well-established and transparent regulatory environment.
- Geological studies highlight the potential of this **large, highly prospective but underdeveloped** country.
- Greenland is a **low-risk, pro-mining and stable jurisdiction**.
- **Strategically located** with access to North America & European markets.
- **Demand for high ESG standards in operations.**
- **Increasingly recognised** as one of the last resource-rich frontiers with a very high geological potential and potential for tier-1 mineral deposits.

FINLAND



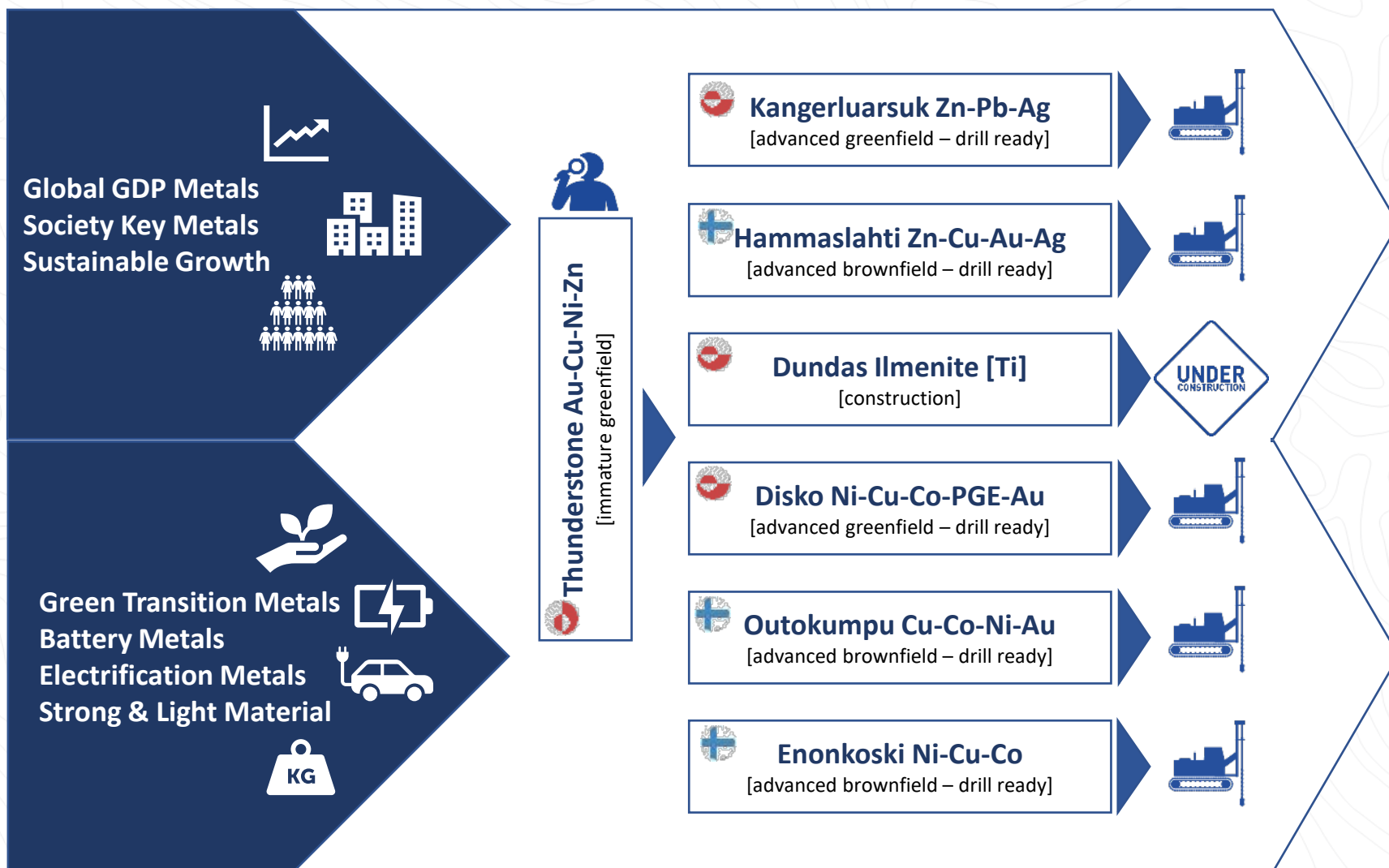
- A **European** mineral region with a long mining tradition, transparent, low-risk, pro-mining, stable.
- **Former and active world-famous mining districts** with untapped **prospectivity for new resources** in old districts – large amount of available data.
- Well-developed service industry, easily accessible.
- **Strategically located** with access to European markets.
- **Demand for high ESG standards in operations.**
- A resource-rich **region being re-discovered**; a historical mining jurisdiction overlooked for some time but now re-emerging.



Tapping into Global Trends & Needs

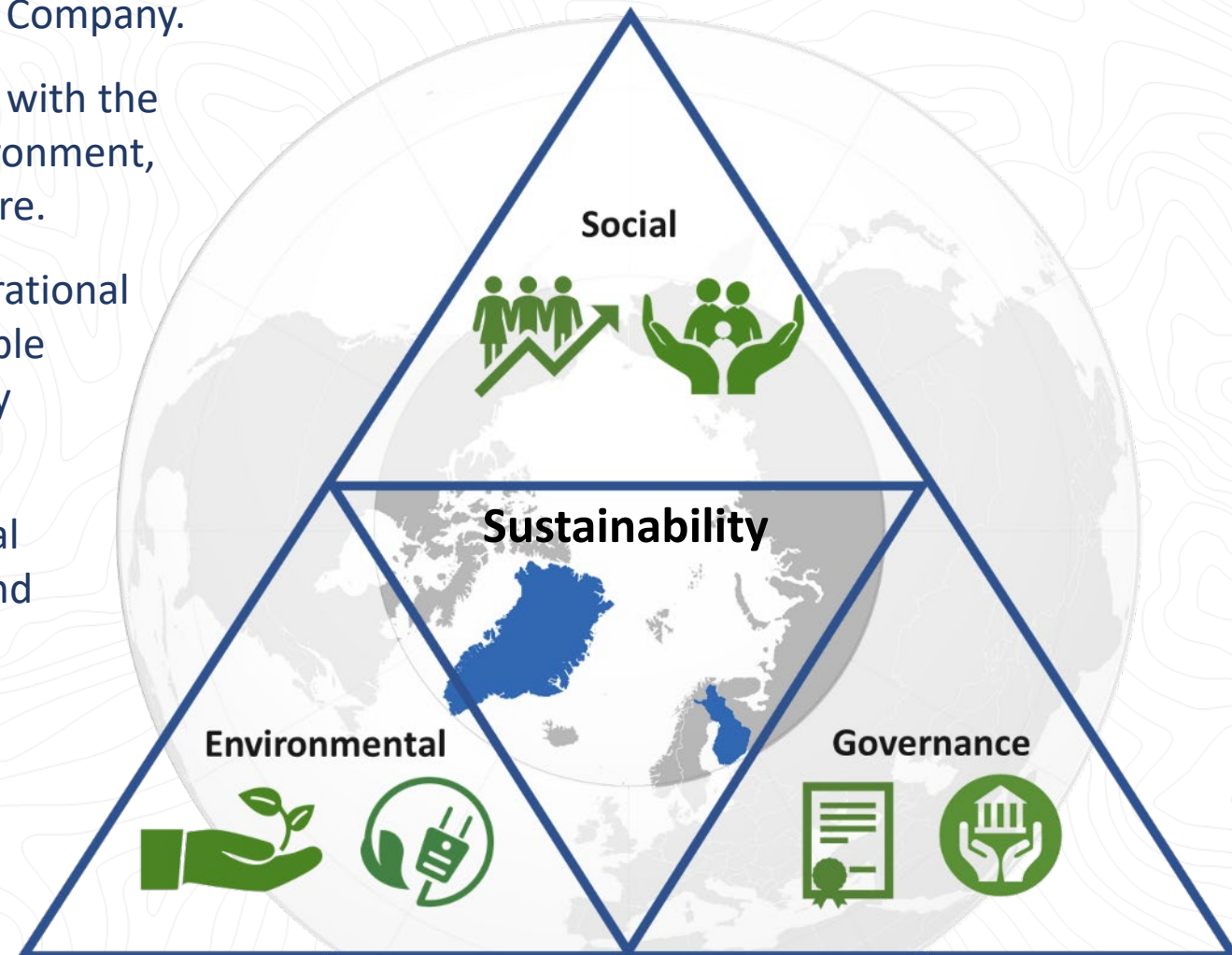
- Commodities for the Future -

Unique Diverse Project Portfolio



Highest Environmental, Social and Governance Standards

- **Sustainability** is a guiding principle in all activities and operations across the entire Company.
- Attain goals responsibly and with the greatest respect to the environment, local communities and culture.
- Committed to attaining operational targets in the most sustainable and environmentally friendly way possible.
- Create sustainable, beneficial and lasting developments and value for shareholders and stakeholders.
- Profound anchoring, involvement and experience within areas of operations.





NORTH-WEST GREENLAND

The Dundas **Ilmenite**/Titanium Project

Large-scale, fully permitted project

Offtake of Dundas ilmenite concentrate secured

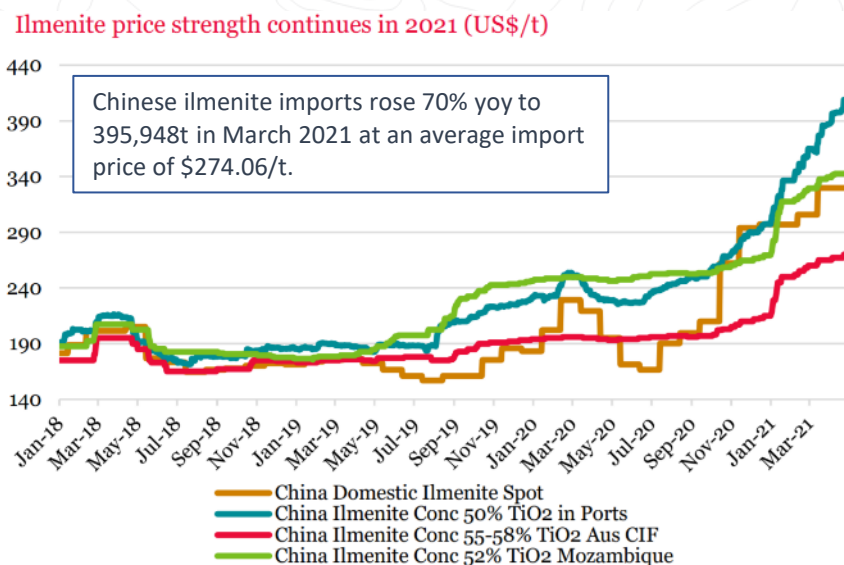
Master Distribution Agreement reached with Asian conglomerate for up to 340,000 tonnes per annum of Dundas ilmenite

- Large, long established Asian Conglomerate with global interests in Commodity Trading & Industry.
- Agreement signed for up to a maximum 340,000 tpa; a minimum of 250,000 tpa.
- The Agreement's upper amount equates to 80% of planned full annual output at Dundas.
- The Agreement is for an initial period of five years from commencement of commercial production at Dundas and can be renewed every 12 months. This agreement endorses the quality of, and the demand for, the Dundas ilmenite product.
- Bluejay are continuing offtake discussion to cover the remaining scheduled annual production; a continued effort.

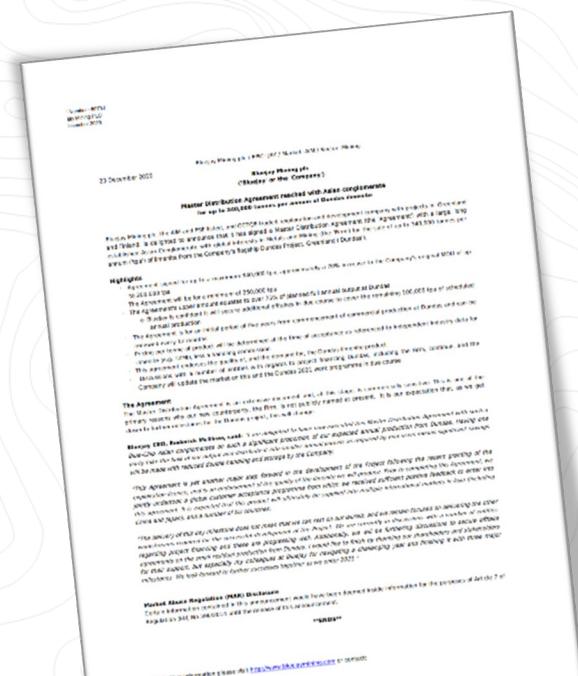
Dundas Ilmenite Market & Customer Sample Programme

- Existing successful Dundas ilmenite market & customer sample programme continues with Master Distribution Agreement Partner and other potential offtake partners.

Strong ilmenite market



From: [Hannam and Partners Equity Research 24/05/2021](#) – based on Bloomberg data.
Dundas PFS base case use ilmenite concentrate per tone @ US\$232.



2019: Trial-shipment of 42,000 tons of high-grade ilmenite sand for pilot processing and Dundas ilmenite market & customer sample program.

Summary Financials

	Internal Rate of Return	NPV5	Life of Mine	Undiscounted net profit
Base Case	32.8%	US\$83.1M	9 year	US\$153.1M
Expanded Case	34.0%	US\$130.7M	11 year	US\$247.2M

- US\$245M estimated capital expenditure ('CapEx') for mining, processing etc.
 - Inclusive of mining, processing, storage of dried finished product and a near shore direct ship loading facility as well as balance sheet management to account for shipping windows (4 months per year).
 - Production of 440,000t of ilmenite concentrate per year.
- JORC Compliant Ore Reserve of 67.1Mt with a mean grade of 3.45% TiO₂ (equal to 7.3% ilmenite in situ) and taken from within the Moriusaq Project area only.
 - The cut-off grade used to report the Ore Reserve, assumes a selling price of US\$232/t, all in sustaining C3 cost of OPEX US\$113/t, Greenland royalty of 2.5% and total TiO₂ recovery of 79.7%.
- PFS Base Case for 9 year mine-life; Expanded Case with 11 years of mine-life takes into account additional adjacent resources.
 - Base case represents the Project economics based on exploiting the current JORC Indicated Mineral Resource (defined by SRK, 11th December 2018).
 - Expanded Case represent the Project economics based on exploiting the current Indicated and Inferred Mineral Resources as defined by SRK in its Mineral Resource Estimate (dated 11th December 2018).
- Proforma: EBITDA US\$ 52.3M
 - Proforma revenue of US\$ 102M per year (440,000t at US\$ 232 per ton FOB ilmenite concentrate); OPEX US\$ 113/t.

Key-metrics are largely determined by ilmenite price, mine-life and CAPEX/OPEX

- For each US\$5/t increase in ilmenite pricing translate into +\$2.2M of revenue.
- Mine-life anticipated to be extended by additional onshore and offshore Exploration Targets.
- CAPEX & OPEX savings anticipate by optimization and final design work.

World Class JORC Resource & Upside Potential

Classification	Location	Tonnes (kt)	>5mm (%)	>2mm (%)	<63µm (%)	THM (%)	In-Situ TiO ₂ (%)
Indicated	Moriusaq	88,000	27.5	36.1	4.2	27.0	3.1
	Ilerlak East	19,500	15.3	24.0	12.8	22.2	2.2
	Ilerlak West	4,800	23.2	32.4	13.8	11.9	1.0
	Total Indicated	112,300	25.2	33.9	6.1	25.5	2.8
Inferred	Moriusaq	5,000	15.7	23.0	5.7	34.2	4.4
	Total Inferred	5,000	15.7	23.0	5.7	34.2	4.4
TOTAL MINERAL RESOURCE		117,300	24.8	33.4	6.1	25.9	2.9

JORC Compliant Mineral Reserve of 67.1Mt – current JORC Mineral Resource of 117Mt. A JORC Mineral Resource of 50Mt already defined – ready to be considered added to the reserve.

In addition:

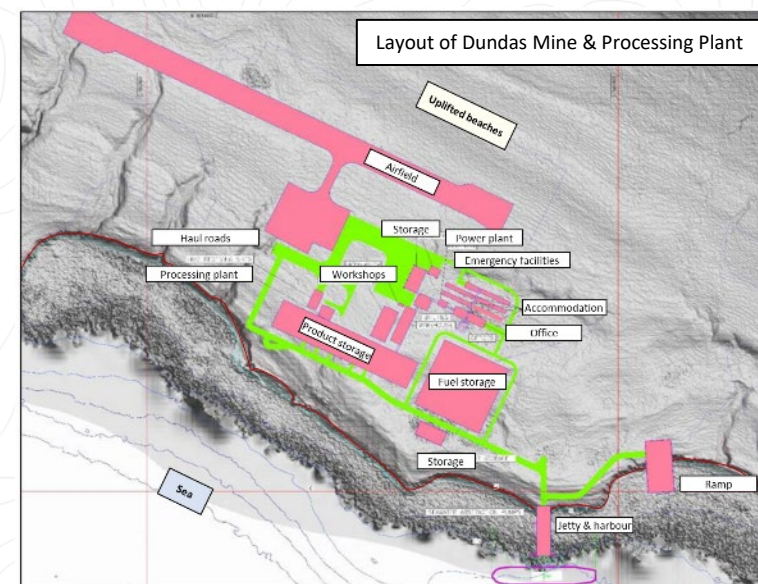
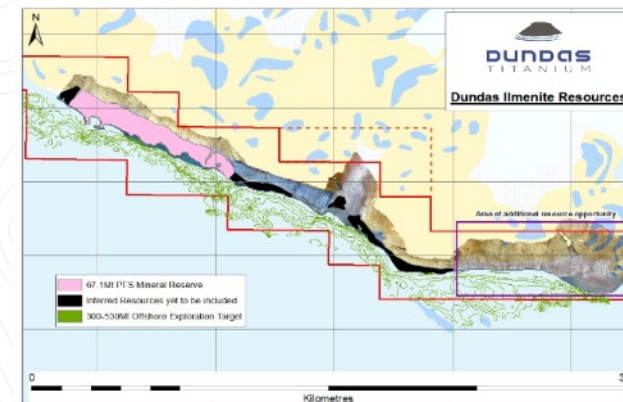
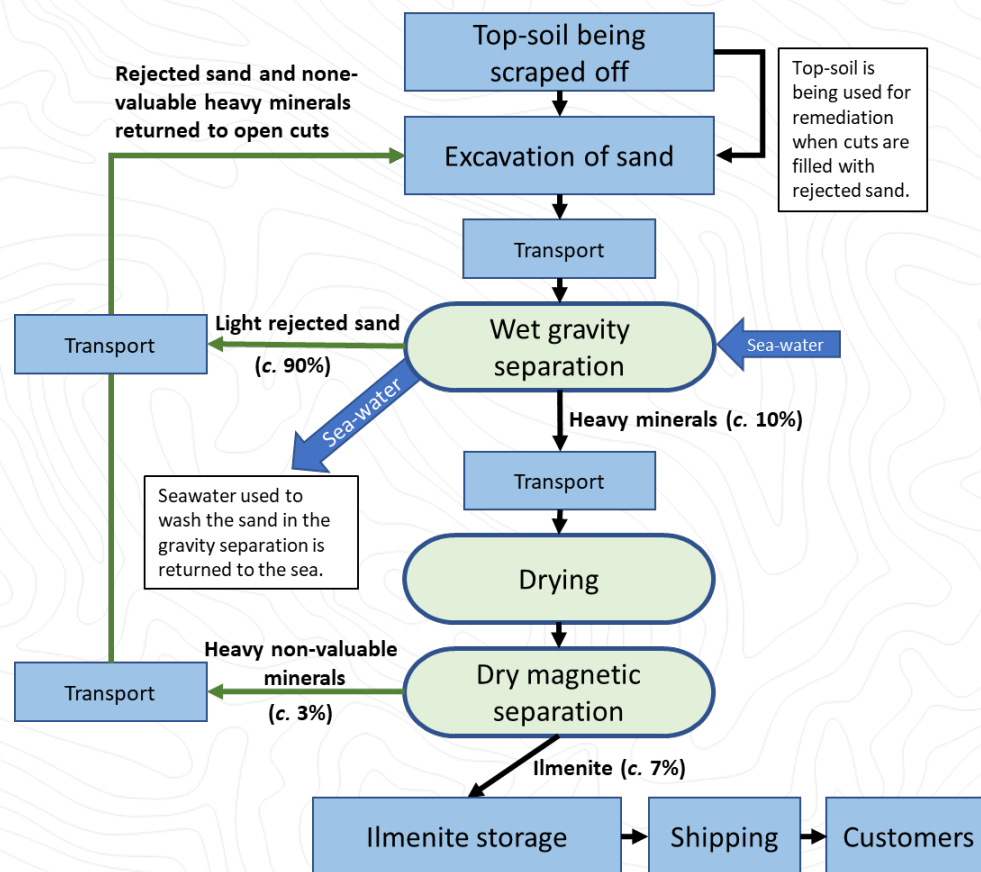
- **JORC Compliant Ilerlak Delta Exploration Target** of between **20-60Mt** at **between 6.0% and 10.0% ilmenite** (in-situ). Within the current Project area.
- Further upside; **JORC Compliant Maiden Offshore Exploration Target** of between **300-530Mt of ilmenite** (shallow marine outside onshore project area) at an **average grade range of 0.4%-4.8%**. Offshore area outside the initial onshore project area.
- Additional potential for local and regional onshore and offshore resources; only 10 km along the 30 km long coastal-stretch at Moriusaq is considered as the initial project area.
- Additional regional onshore and offshore targets are present:
 - The Geological Survey of Denmark and Greenland (GEUS) estimated ilmenite tonnages liberated from the Steensby Land Sill Complex regional in southern Steensby Land to be **7,000Mt ilmenite** – with between **500Mt to 1,100Mt ilmenite** at the greater Dundas Ilmenite Project area alone.

Next mine in Greenland

- Fully permitted – Exploitation License granted for 30 years.
- Simple mining and processing of black heavy mineral-sand rich in ilmenite (FeTiO_3) from onshore uplifted beaches in a 12 km × up to 1.5 km areas of the south coast of Steensby Land, Northwest Greenland.
- Excavating sand, extract ilmenite by gravity & magnetics – returning 93% of the sand back to its original place.
- 440,000 tonnes of ilmenite concentrate shipped by 11 bulk-carriers in a 4 months open-water window.



Basic Mining & Processing



Simple and proven:

- Excavation
- Easy transport
- Simple screening
- Wet gravity plant
- Dry magnetic plant
- Bulk-carrier to market (11 ships per year)

Low environmental impact:

- No chemicals, no crushing, no liberation
- No tailings or waste; natural products – rejected sand
- Return as back-fill in excavated open pits(90%)
- Easy remediation

Planned scenario:

- Onshore mining
- All year production
- 440,000 tonnes of ilmenite concentrate per year
- 4 months shipping window
- 120 employees on-site
- All scalable

Options & future add-ons:

- Light-rail haulage solution for transport
- Electrification
- Alternative renewable power (wind and/or solar)
- Processing – new innovative technologies for drying

Feasibility Study

- **Total Capital Expenditure of US\$245M**
 - Includes all - mining, processing, storage of dried finished product, near shore direct ship loading facility and contingency as well as sufficient reserves for balance sheet and cash flow management between shipping windows.
 - Further design and option studies for significant CAPEX and OPEX savings anticipated.
- **Highly conservative** approach to CAPEX and OPEX; CAPEX inflated by 20% as a 'Greenland factor'.
- Revenue to Cost Ratio ('R:C') is 2.01. This is significantly above an R:C of 1.7 which is considered a minimum metric by leading industry consultants for new projects to be brought online.

Feasibility Study

- JORC Compliant Mineral Reserve of 67.1Mt out of the JORC Resource of 117.3Mt.
- The cut-off grade used assumed a selling price of US\$232/t, all in sustaining costs of US\$113 per tonne of ilmenite produced, Greenland royalty of 2.5% and total titanium dioxide recovery of 79.7%.

Advanced Project Financing

- Advancing dialogue with commercial banks, financial institution and export credit agencies on syndicate for project financing including related due diligence and sign-off of DFS.

Cost Breakdown

Total direct costs of \$143,030,426:

- \$24,360,000 for mining
- \$57,695,044 for processing
- \$60,975,382 for infrastructure

Cost Category	Mining (US\$M)	Processing (US\$M)	Infrastructure (US\$M)
Earthworks & General Services	0.360	6.217	2.449
Civils & Buildings		15.067	15.258
Structural		8.465	3.776
Platework		1.743	2.302
Mechanical	24.000	13.884	22.102
Electrical & Instrumentation		3.951	7.587
Piping & Valves		2.807	2.809
First Fills & Spares			0.121
Vendor Representatives		0.180	0.084
Contingency	1.1	1.2	2.18
Total	24.360	57.695	60.975

Total indirect costs for the project are: \$87,333,001

Cost Category	Indirect Cost (US\$M)	Percentages of Total Direct Cost
Owner's Costs	3.712	2.6%
Engineering & Procurement	9.717	6.8%
Construction Management Costs	5.503	3.8%
Vendor Reps, Spares & First Fills	5.240	3.7%
Indirect Construction Costs	18.156	12.7%
Indirect Contractors Costs	3.475	2.4%
Freight, Duty & Taxes	19.463	13.6%
Insurances	1.360	1.0%
Contingency & Escalation	20.705	14.5%
Total	87.333	61.1%

Cost per Tonne Operating Costs (OPEX)

Discipline	Cost (US\$) per tonne of ROM	Cost (US\$) per tonne of Ilmenite
Mining	2.63	44.45
Processing	1.82	30.80
Infrastructure, Services and G&A	2.23	37.56
Total	6.68	112.81

Dundas Milestones



Advanced discussions on project financing and related due diligence process including sign-off on optimisation option studies (reduced OPEX/CAPEX) and updated feasibility.
Commence of Procurement and Construction at Dundas.



Fully Permitted: Exploitation Licence granted by Government of Greenland – for 30 years with possibilities for extending the licence. **Exploitation & Closure Plans approved** – last political approval.



Master Distribution Agreement secured – offtake of up to 350,000 tonnes ilmenite concentrate per year with a minimum of 250,000 tonnes.



Highest Standard Environmental Assessment studies carried out and EIA approved by Government of Greenland; low impact on environment.



Social Impact Assessment studies carried out and SIA approved by Government of Greenland; beneficial for local communities, provide developments to Greenland/Arctic.



Public Consultation Process – strong local support from communities; licence to operate.
Impact Benefit Agreement signed – ensure mutual benefit, social sustainability and collaboration.



Advanced Pre-Feasibility Study – economical and technical viability certified; mine, processing and infrastructural plans, product assessment and marketing, economy, etc.



Trial-shipment and pilot demonstration plant – processing confirmed, trial shipment successful, customer sample programme continues.



WEST GREENLAND

The Disko-Nuussuaq Ni-Cu-Co-PGM-Au Project

- Early-mover on large-scale drill-ready targets with analogous to Noril'sk-Talnakh Mining District – potential for a Tier 1 discovery

Disko Ni-Cu-Co-PGM-Au Project - Joint-Venture Agreement with KoBold Metals -



JV with KoBold Metals – highlights:

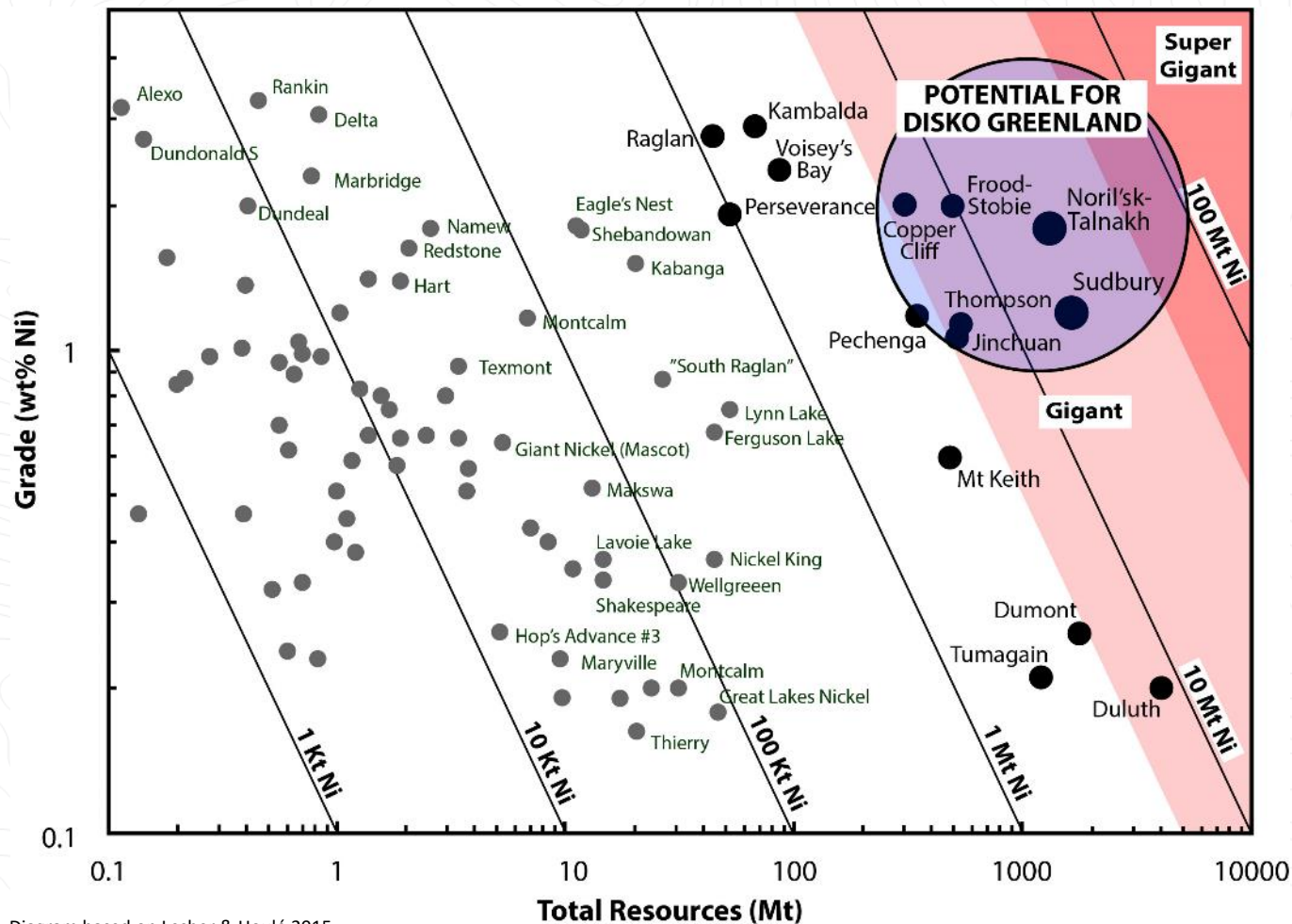
- Principal investors in KoBold include **Breakthrough Energy Ventures**, a climate & technology fund, overseen by **Bill Gates**, and whose investors include **Michael Bloomberg, Jeff Bezos, and Ray Dalio**. Other investors in KoBold include **Andreessen Horowitz**, the premier Silicon Valley venture capital fund and **Equinor**, the Norwegian state-owned multinational energy company.
- Under the terms of the Agreement, **KoBold can earn 51% of Disko** through a two-stage earn-in totaling **US\$ 15M of investment – including at least a minimum of US\$ 11.6M drilling commitment/15 exploration drill holes**.
- Bluejay can maintain a 49% interest** through proportionate funding of the project after earn-in period and will manage field operations during this period.
- KoBold in-house developed machine learning and artificial intelligence data technologies, *TerraShedSM* and *Machine Prospector®*, have been built from scratch by alumni of top Silicon Valley software companies to guide.



Disko Ni-Cu-Co-PGM-Au Project - Tier 1 world class potential -

- The source supplying the green energy transition and battery metal demand -

Potential for Disko – at least 12-16Mt of nickel –



- Geologically demonstrable that at least **12-16Mt** of nickel awaits to be found^{*‡}; a giant nickel-copper deposit/district in the making.
- Checks all boxes for the settings and formation of large nickel-copper sulphide mineralisation.
- Similarities to **Norilsk Nickel-Copper Mining District** – which have an in-ground value of US >\$1.4 Trillion[‡].
- Drill-targets confirmed by multiple datasets.
- 28t massive sulphide 'boulder' running **6.9% Ni, 3.7% Cu, 0.6% Co** and **2g/t PGM[‡]**.

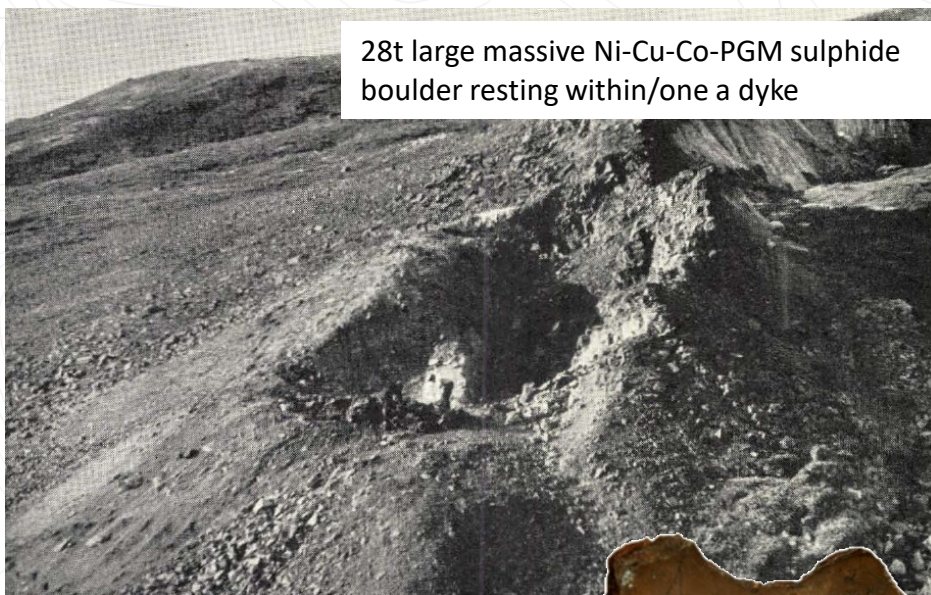
Diagram based on Leshner & Houlié 2015.
Thresholds for Giant and Super Giant is based on Laznika 2010.

^{*}Mass balance calculation by Avannaa Resources (2014); only the volcanic rock unit Kûgânguaq Mb is considered here.

[‡]Not JORC Compliant.

The smoking gun...

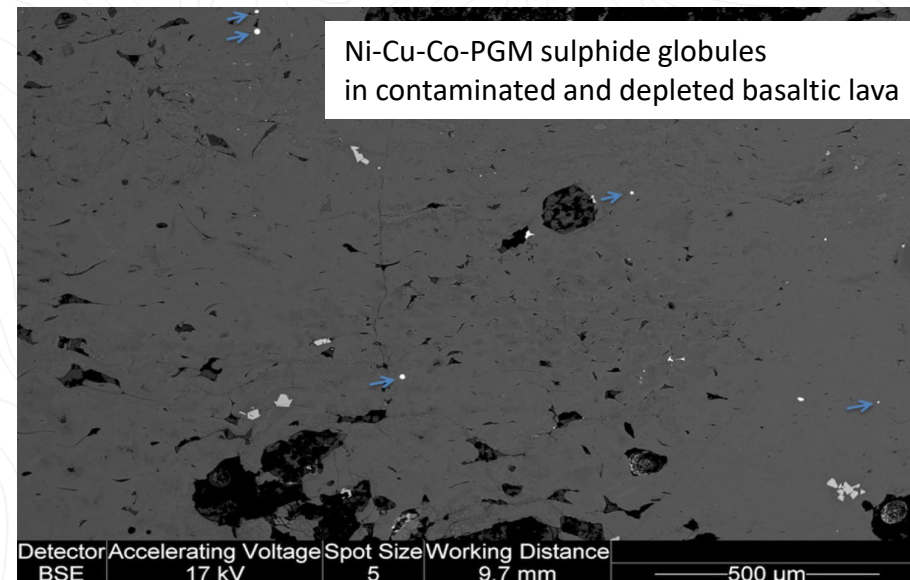
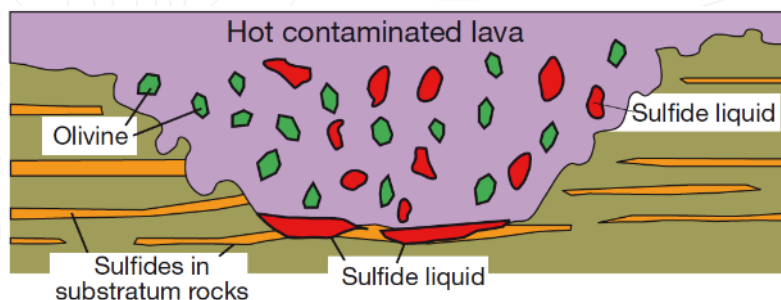
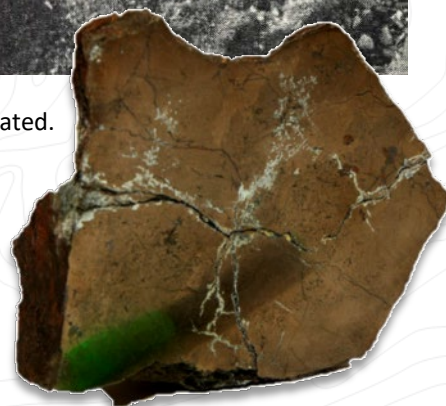
- mineralisation processes have occurred at all scales -



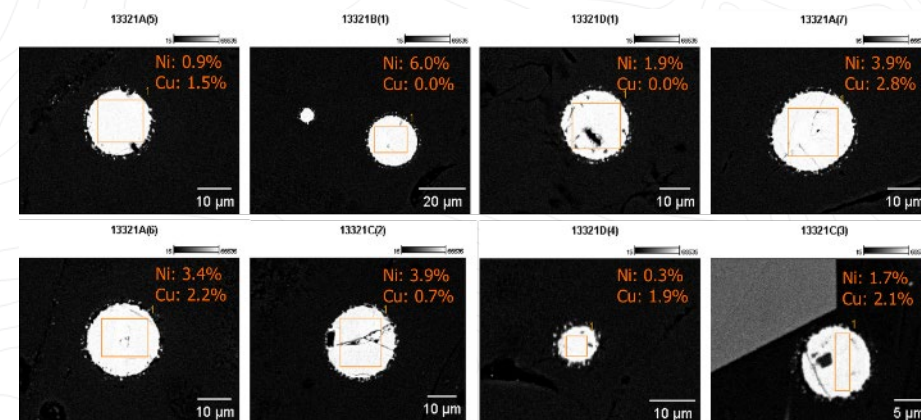
28t large massive Ni-Cu-Co-PGM sulphide boulder resting within/one a dyke

Pauly 1950 – the Igdlukunguaq locality where the 28t massive sulphide boulder was located.

- A 28-tonne massive sulphide 'boulder' running **6.9% Ni**, **3.7% Cu**, **0.6% Co** and **2g/t PGE***.



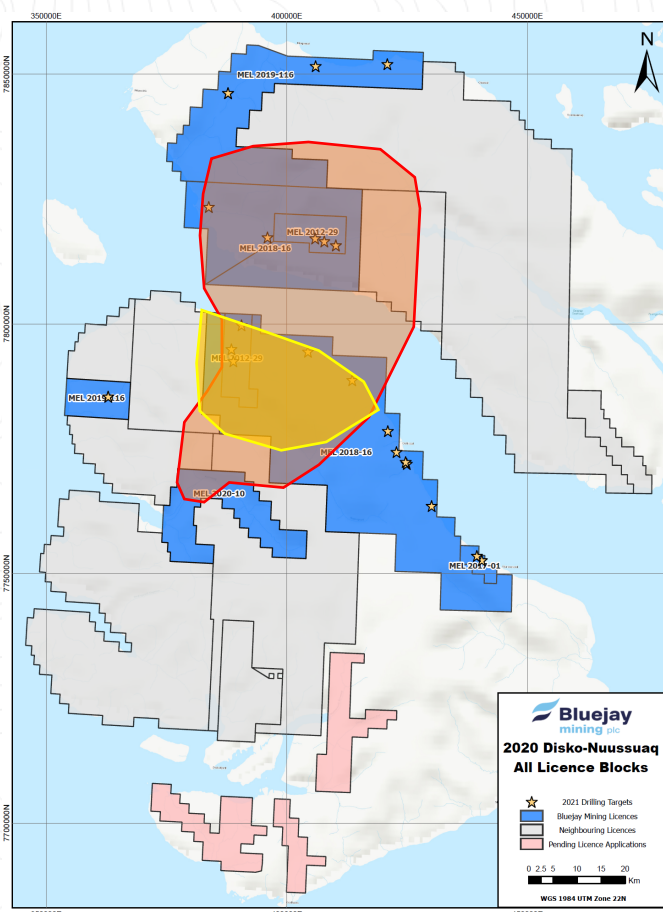
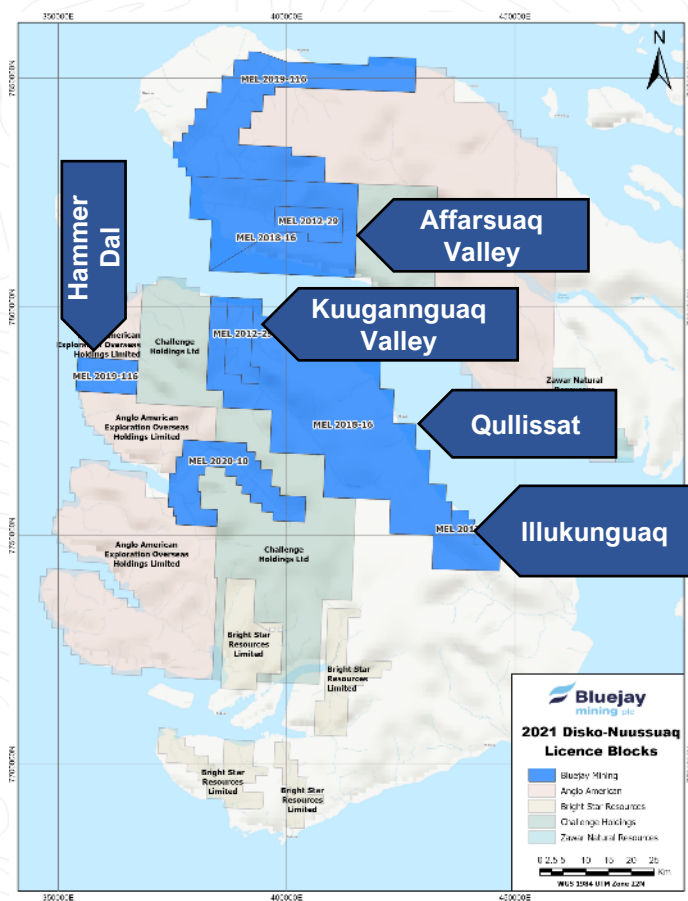
Ni-Cu-Co-PGM sulphide globules in contaminated and depleted basaltic lava



Spherical sulphide globules exsolving from silicate melt in the highly nickel depleted Kuugannguaq Mb welded tuff, which has a composition MgO 10.8wt%, FeO 9.5wt%, Ni 39ppm and Cu 18ppm. The globules themselves are highly enriched in nickel and copper (up to 6wt% and 3wt% respectively) and are representative of the exsolved sulphide melt that is now accumulated below the volcanic pile.

Disko Exploration Licence - Significant opportunity -

- Drill-ready targets identified.
- Confirmed in multiple datasets – geological, geochemical and geophysical.
- Accessible and operational ground; drilling on targets.
- Drilling solutions and programmes ready.



Two contaminated volcanic units show significant volume:



Asuk Mb. Known from northern Disko and southern Nuussuaq. Total >1,000km². Often composite dykes/lava flows (andesite/basalt). Up to 150m thick on northern Disko. Several eruption sites.



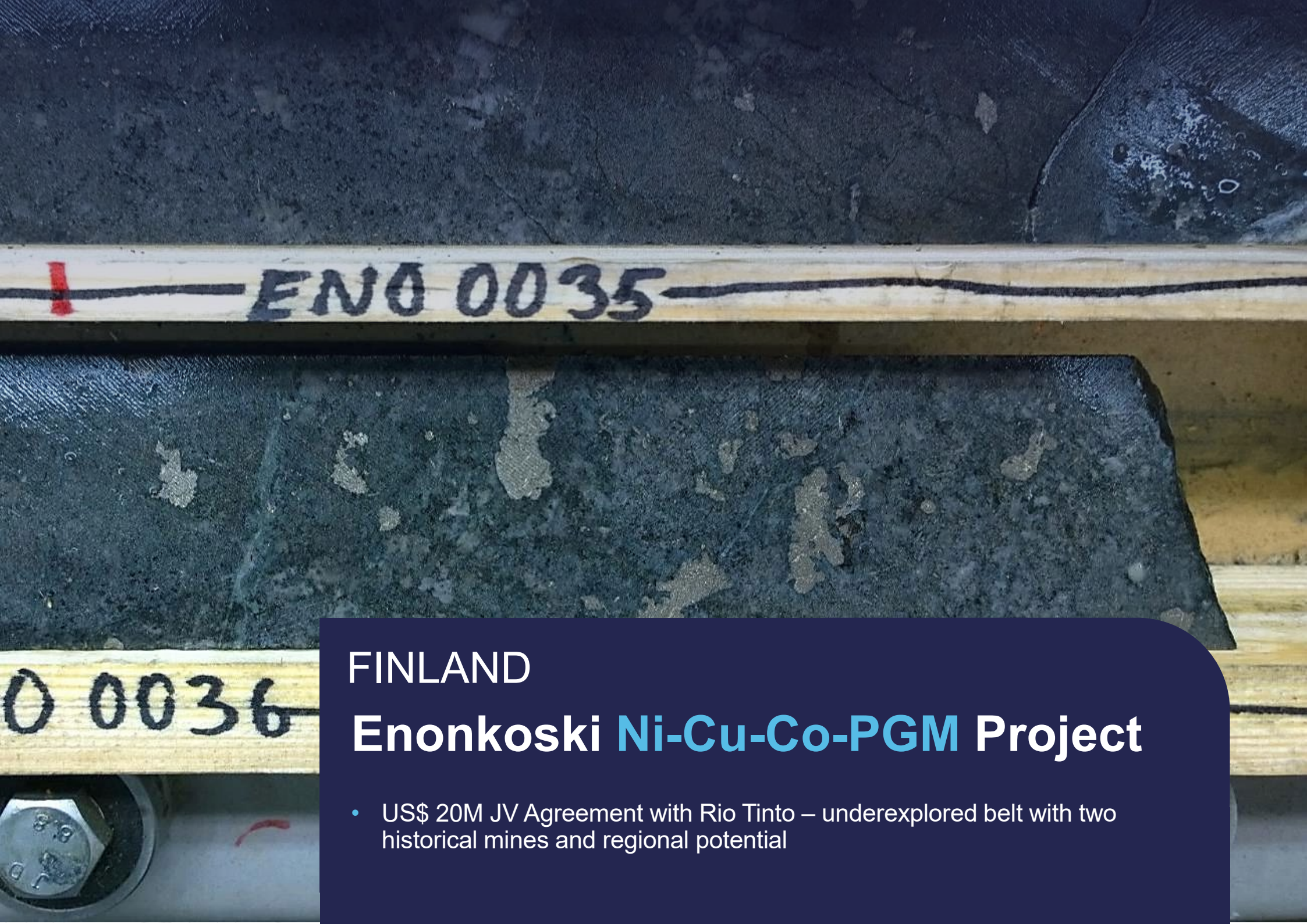
Kuugannguaq Mb. Known from northern Disko only. > 200km². Mainly basaltic lavas and tuffs. Up to 90m thick, est. vol. 7.5km³.

Disko Exploration Licence - Summary -

Funding of exploration and drilling secured through US \$15M JV with KoBold Metals:

- An unique first-mover opportunity for the discovery and development of a world-class tier 1 nickel-copper-cobalt district.
- Well-established prospective geological settings with numerous similarities to one of the largest nickel mining camps – the Noril'sk mining district.
- Mineralisation process validated and documented; depletion & sites of sulphide segregation, sulphide droplets & massive sulphides with Ni-Cu-Co-PGE-Au.
- Potential for tier 1 world-class deposit - targets of at least 12-16Mt nickel are geological demonstrable.
- 35+ years of revitalised historical and new exploration data (value of at least US\$ 50M) used for definition of multiple drill-targets which are reconfirmed in multiple datasets.
- Former exploration companies reconfirmed targets and did not leave because of confidence in target; they left because of technical drilling issues (not the proper drilling solution) or lack of funding/market conditions.
- Bluejay licenced ground at Disko-Nuussuaq is accessible, workable and drillable.
- Drilling solution and campaign ready for execution.





ENO 0035

0 0036

FINLAND

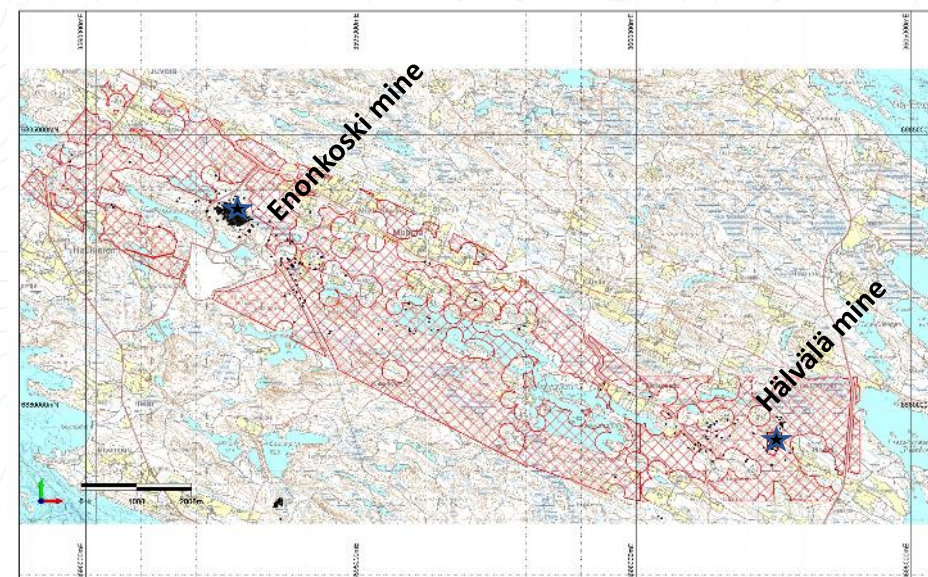
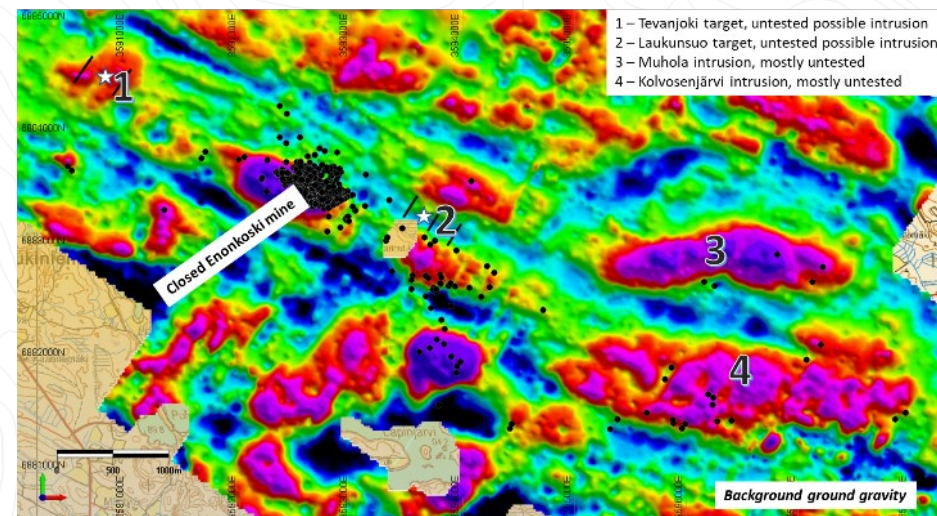
Enonkoski Ni-Cu-Co-PGM Project

- US\$ 20M JV Agreement with Rio Tinto – underexplored belt with two historical mines and regional potential

Enonkoski JV Agreement with Rio Tinto

RioTinto

- **US\$ 20M JV Agreement with Rio Tinto on the Enonkoski Ni-Cu-Co-PGM Project.**
- In the first phase, the world's second-largest miner could secure 51% ownership by spending \$5M by 2023 (65% @ +\$5M by 2025; 75% @ +\$10M by 2029).
- Drilling, geological, geophysical and geochemical exploration activities.
- FinnAust Mining Finland Oy (100% Bluejay) as operator.
- Enonkoski licence area covers the entire ore potential belt – several drill targets identified near former mine; regional potential.
 - Enonkoski covers over 23km² of mafic – ultramafic noritic rocks (prospective for Ni-Cu-PGE magmatic sulphide deposits) between and along 15km of strike.
 - Historically produced 6.7Mt at 0.78% Ni and 0.22% Cu from 1984 – 1994.
 - Historic intercepts of the massive ore include 32.9m at 4.09% Ni, 0.56% Cu, 0.17% Co and 19.7m at 6.12% Ni, 1.94% Cu, 0.29% Co.





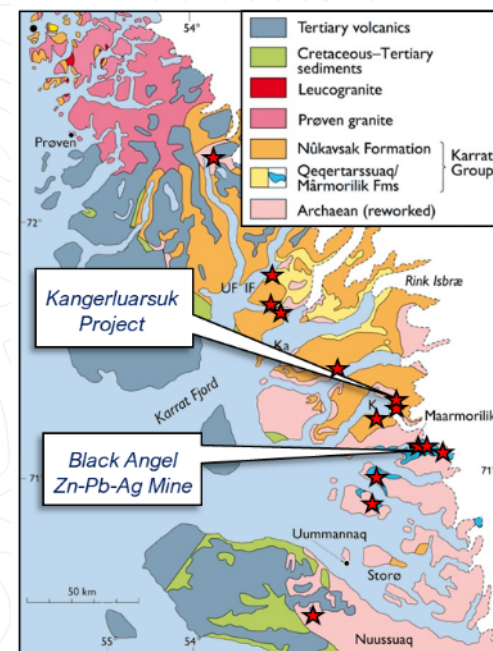
GREENLAND

Kangerluarsuk Zn-Cu-Pb-Ag Project

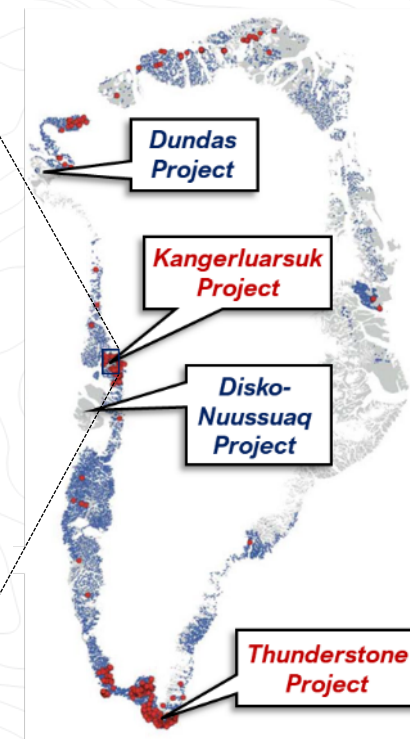
- Drill-ready, data-rich and well-defined targets adjacent to the former and most profitable mine in Greenland – the Black Angel Zn-Pb-Ag Mine

Brownfield Project in Greenland...

- The Kangerluarsuk Project consists of **two 100% owned mineral exploration licences totalling 692 km²** located within the Karrat Group, a major Paleoproterozoic meta-sedimentary basin with abundant Zn-Pb-Ag ± Cu showings.
- An area with a recent history of mining. **The project is situated only 12 km north of the former Black Angel Zn-Pb-Ag mine** that is acknowledged as **Greenland's most profitable to date, producing 11.2 Mt @ 12.6% Zn, 4.1% Pb and 29 g/t Ag between 1973-1990***.
- Located in a geologically favourable sub-basin previously targeted by Rio Tinto Zinc (RTZ) and Cominco.
- **Drill ready programme;** monetisation through own development programme or JV.



The Uummannaq District, Central West Greenland showing the southern portion of the Paleoproterozoic Karrat Group meta-sedimentary basin. Stars show known Zn-Pb mineral occurrences.



- GEUS stream sediment sample locations (n = 12027)
- GEUS stream sediment zinc > 200 ppm (n = 381)

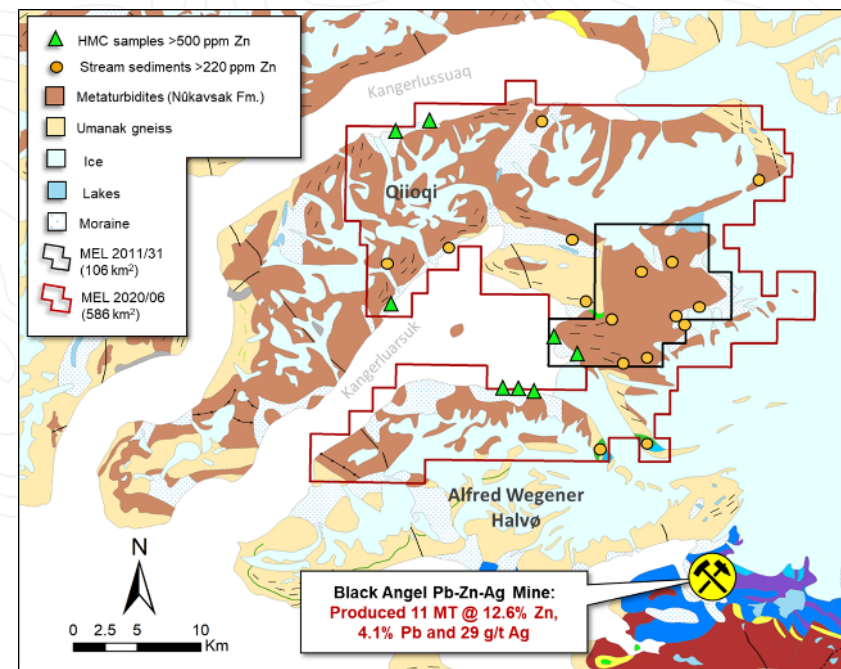
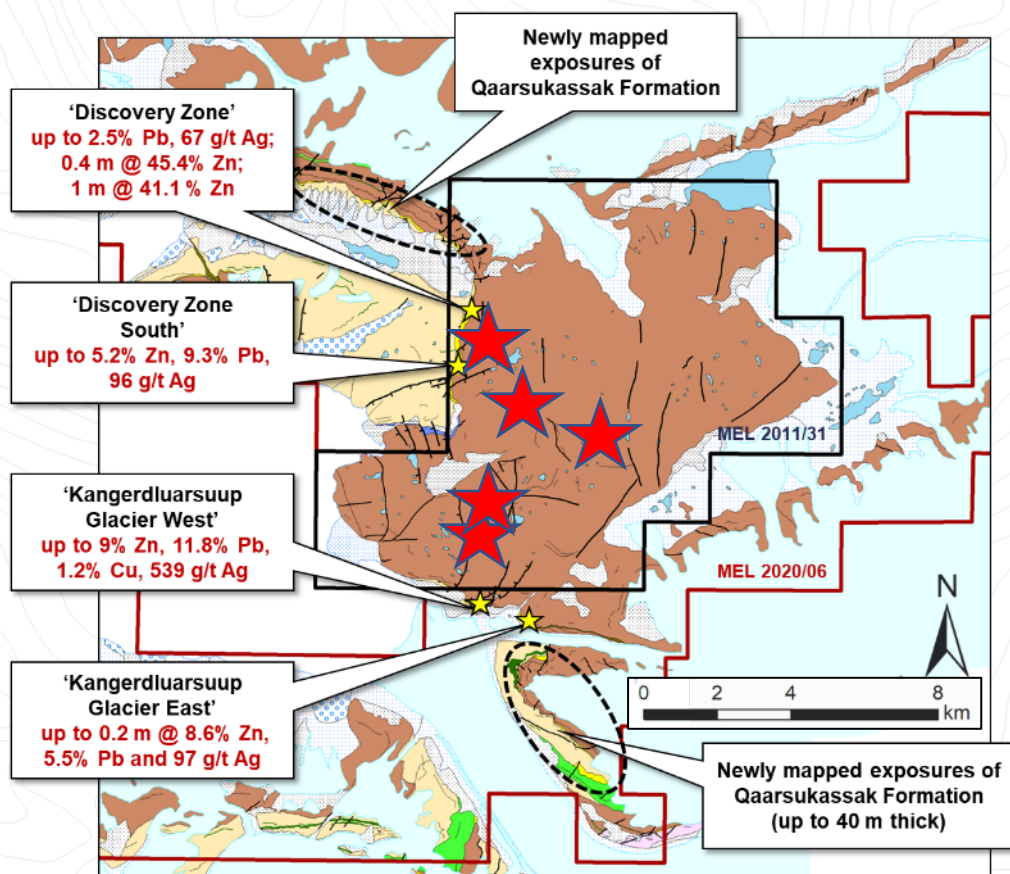
Figures adapted from: Sørensen et al., 2013
*Not IORC Compliant



Exploration licences – upside potential...

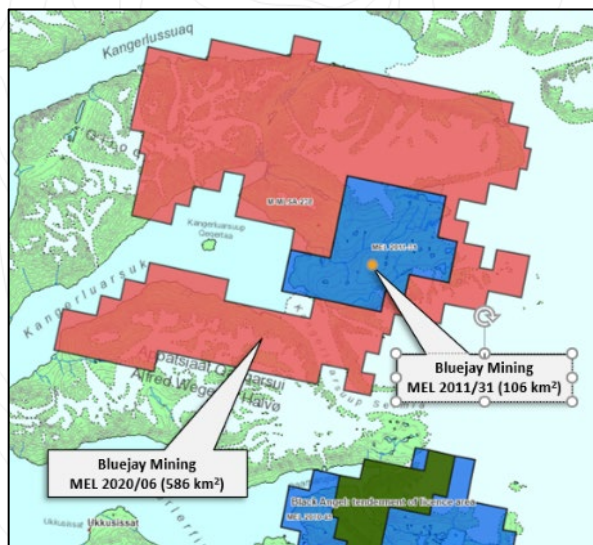
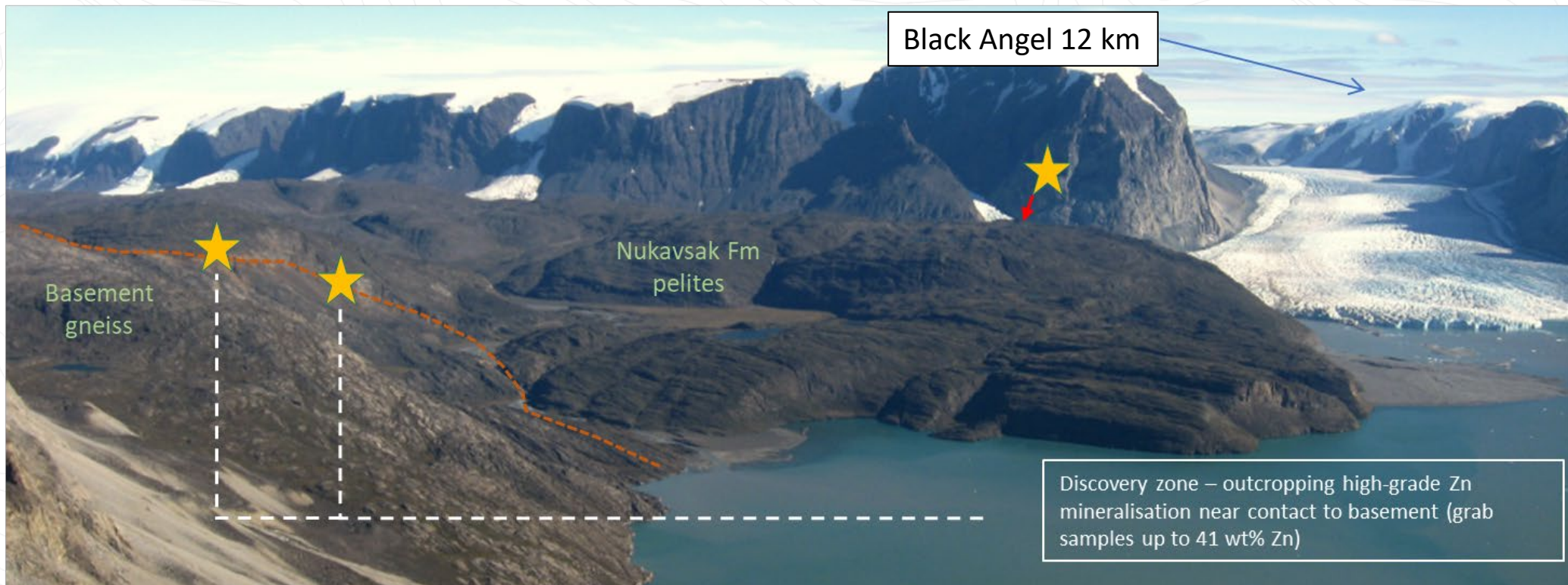
Drill-targets – maiden programme ready for execution...

- 3D inversion and modelling of the geophysical data (EM) has identified multiple deep, highly conductive bodies.
- Several of the conductive bodies are coincident with the strongest surface geochemical anomalies (SGH, Soil Gas Hydrocarbons and MMI, Mobile Metal Ions).
- Combination of shallow and deeper targets.



- Widespread outcropping ore-grade Zn-Pb-Ag-Cu mineralisation; surface sampling by Rio Tinto Zinc underpins the resource potential regional.
- Newly discovered exposures of Qaarsukassak Formation (the host to all known Zn-Pb-Ag mineralisation at Kangerluarsuk; inferred to correlate with the Mârmorilik Formation that hosts the former Black Angel mine) further increases prospectivity of Bluejay's licence areas.

Kangerluarsuk – ready for drilling...



Gossanous 'Discovery Zone' at Kangerluarsuk

*Geochemical umbers not JORC Compliant



FINLAND

Base metal projects in former mining districts

– Base Metal Projects in former Mining Districts–

- Finland is a re-awoken traditional mining jurisdiction - the European-continent's stable resource supply.
- All permissive exploration ground have been taken. Bluejay is first-mover and one of the largest area holders in East Finland. Easy exploration, all-year around operation.
- In-house Bluejay expertise; excellence in operation, strongest JV partners – lots of interest in portfolio.

Outokumpu Cu-Ni-Co-Zn-Au-Ag Project

- Unique Outokumpu-type targets; high-grade, wanted multi-commodity basket, worthy of re-exploring and developing.
- Licences surround several former high-grade mines. Wealth of data; proven potential but lacked modern reassessment. New drill-targets established.
- Drill ready programmes.** Monetization through own development programme or JV.

Hammaslahti Cu-Zn-Au-Ag Project

- VMS-/Sediment-hosted targets; high-grade esp. Cu.
- Former mine between 1971-1986.
- Wealth of data; proven potential but lacked modern reassessment and new drilling. **Drill ready programmes.** Monetization through own development programme or JV.

Enonkoski Ni-Cu-Co-PGE Project

- Activities funded through US\$ 20M JV w. Rio Tinto.**
- Former mine between 1984-1994.
- Differentiated gabbro-intrusion-hosted Ni-Cu-Co-PGM targets; wealth of data. **Ongoing work programme.**

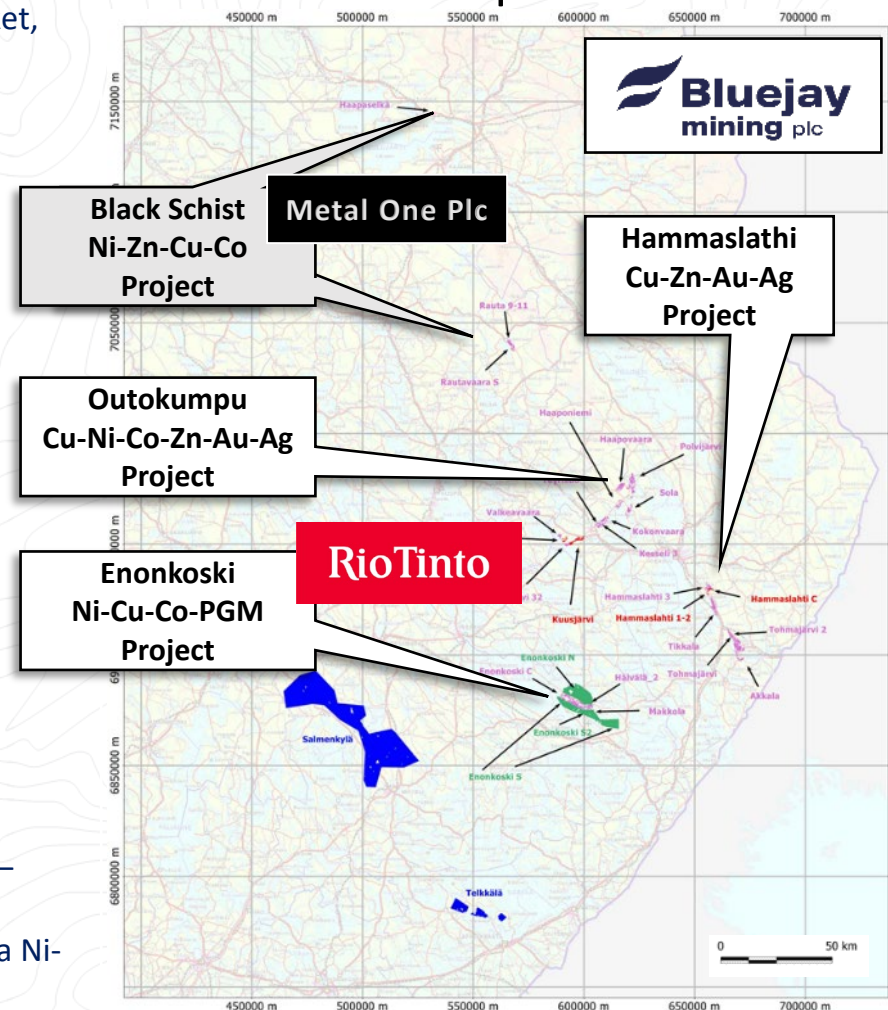
RioTinto

Black Shales Ni-Zn-Cu-Co Project - divestment

- Partial divestment of Finnish Black Shale Assets; £4M sell to Metal One Plc** – Bluejay representation; Metal One to fund activities.
- Rautavaara and Paltamo areas with analogies and proximity to the Talvivaara Ni-Zn-Cu-Co mine. **Work programme commencing.**

Metal One Plc

South-eastern part of Finland





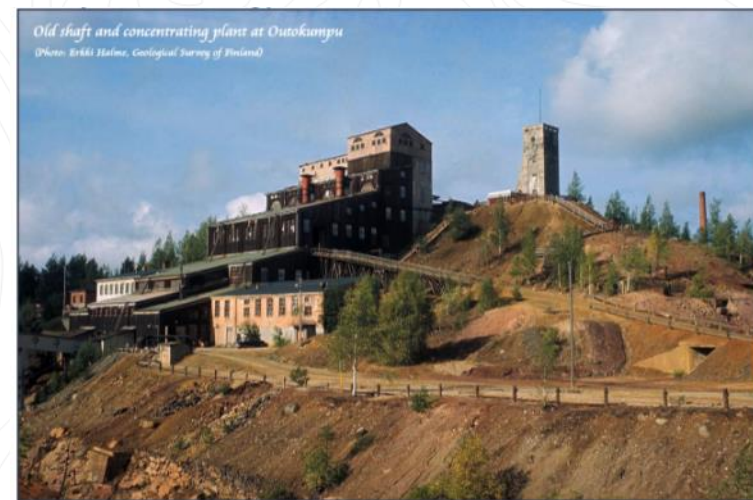
FINLAND

Outokumpu **Cu-Ni-Co-Zn-Au-Ag** Project

- Potential for attractive commodity basket deposit, including battery metals, within world famous mine district with three former mines

– Unique, high-valued and in-demand commodity basket –

- Famous and unique Cu-Ni-Co-Zn-Au-Ag ore type – no comparative deposits elsewhere; brownfield lacking modern assessment.
- The unique Outokumpu ore is worthy exploring for:
 - Copper is very high with credits from relative high Co, Zn, Au, Ni and Ag.
 - Very high commodity basket; **between 5.9 to 11.1 AuEq over 1.9m to 9.3m.**
 - A diversified commodity basket provide a resilient value proposition.



First modern mass production facility at Outokumpu hill 1928. Source: www.outokumpu.com

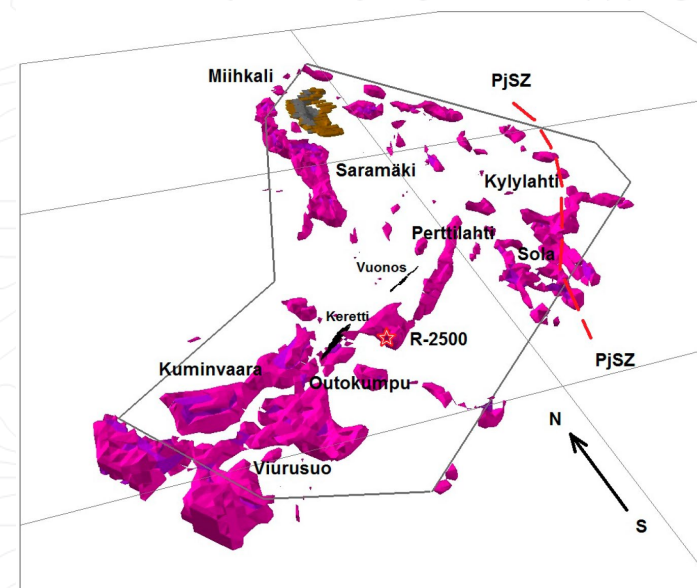
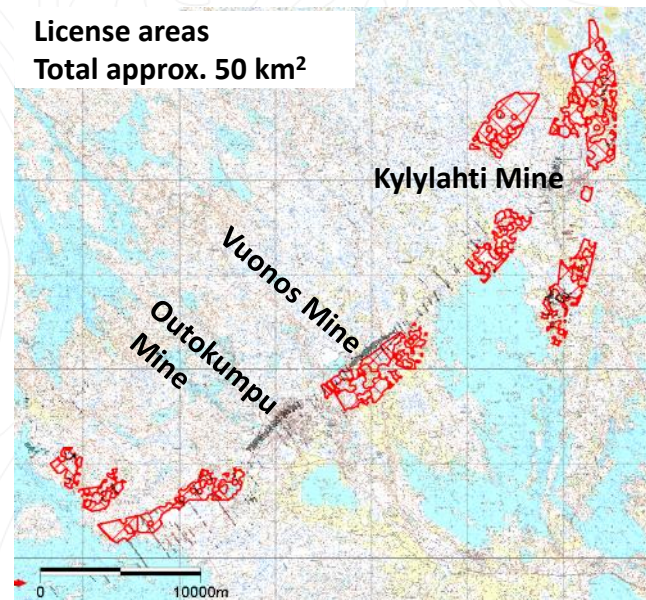
Intercepts on Outokumpu Belt

Drillhole id	Mine	Width [m]	Cu [wt.%]	Zn [wt.%]	Ni [wt.%]	Co [wt.%]	Au [g/t]	Gold Equivalent [AuEq]
OKU-3	Outokumpu Mine	9.3	6.2	n.a.	n.a.	n.a.	n.a.	11.1
DDH 75A	Outokumpu Mine	2.3	2.3	2.7	0.08	0.16	0.4	7.5
DDH 74A	Outokumpu Mine	2.2	2.2	1.5	0.09	0.16	0.5	6.8
DDH 30A	Outokumpu Mine	2.9	2.9	1.2	0.05	0.25	0.7	8.7
DDH 73A	Outokumpu Mine	3.4	3.4	0.4	0.03	0.26	0.9	9.4
DDH 407	Vuonos Mine	3.3	3.3	0.8	0.29	0.23	n.a.	9.0
DDH 223	Vuonos Mine	1.9	1.9	1.4	0.17	0.31	n.a.	7.0
DDH 221	Vuonos Mine	3.0	3.0	1.2	0.23	0.25	n.a.	8.6
DDH 808	Kylylathi Mine	2.8	2.8	n.a.	n.a.	0.33	n.a.	7.5
DDH 809	Kylylathi Mine	2.1	2.1	n.a.	n.a.	0.28	n.a.	5.9
DDH 796	Kylylathi Mine	3.0	3.0	n.a.	n.a.	0.54	n.a.	9.5

Note: Historical drill intercepts. AuEq calculated according to metal prices 11/05/2021 at Cu 10,579 US\$/t, Zn 3,021 US\$/t, Ni 18,042 US\$/t, Co 45,180 US\$/t, Au 59 US\$/t, Ag 0,88 US\$/t. Nor JORC compliant data or calculation.

Outokumpu – one of the world's most prolific geological belts –

- The Outokumpu Belt is one of the world's most prolific geological belts.
- Hosts multiple high-grade deposits including the world famous Outokumpu copper mine.
 - Two former mines, **Outokumpu Cu-Ni-Co-Zn-Au-Ag Mine** and **Vuonos Cu-Ni-Co-Zn Mine**, have produced a total of approximately 34.4Mt of ore at average grades of 3.6% copper, 1.2% zinc, 0.22% cobalt and 0.1% nickel between 1914 and 1988*.
 - The **Kylylahti Cu-Co-Zn Mine**. Commenced production in 2012. Closed operation in 2020. Total ore of 6.1Mt at 1.2% Cu, 0.2% Zn, 0.1% Co and credits from Au and Ag.
 - In addition, eight already known smaller unmined deposits (0.1 to 3.4Mt)*.
- The total historical and current ore reserves and resources of the Outokumpu belt are approximately **44Mt @ 3.1% Cu, 1.1% Zn, 0.2% Co and 0.1% Ni***
- High potential – wealth of data; modern processing → new targets for drilling.
 - Reassessment have resulted in several new drill targets; new governmental research.



Indications of deep conductive anomalies (purple interpolated surface) in the Outokumpu Belt. After:

*Geochemical & tonnage numbers not JORC Compliant

http://tupa.gtk.fi/julkaisu/specialpaper/sp_050_pages_015_020.pdf



FINLAND

Hammaslathi Cu-Zn-Au-Ag Project

Brownfield district - no competition, Bluejay have monopoly...

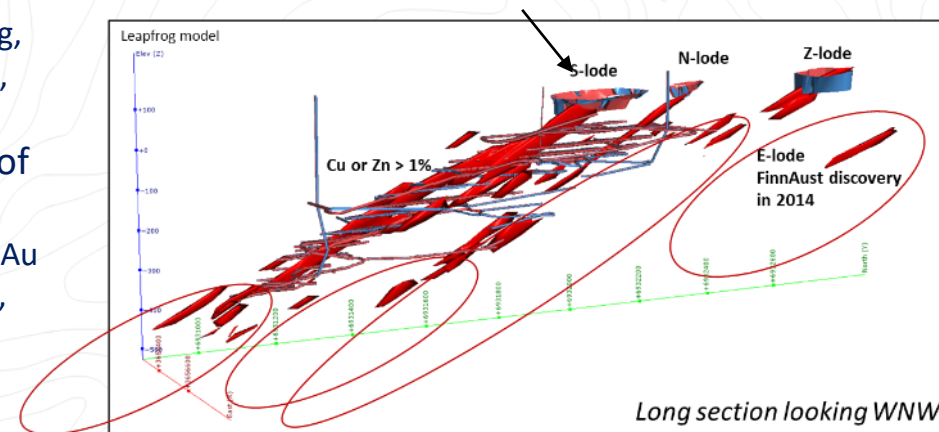
- Hammaslahti Cu-Zn-Au-Ag Mine – in operation as open pit and underground 1971 to 1986.
- **7Mt of ore @ 1.1% Cu and grades of Zn, Ag and Au**; strategic corporate decision to stop mining at underground level 500m
- Mine site approximately 35km southeast of the City of Joensuu in East Finland.
- Excellent infrastructure – main road and railroad close to the old mine; easy drilling access (forest roads), nearby service providers, no protected areas close to the mine.

Results - summary

- Extensions of historical ore lodes have been proven.
 - Best intercept 15m from 536m @ 3.05% Cu, 0.13% Zn, 14.39 ppm Ag, 0.77 g/t Au (0.2% Cu cut off) including 3.4m @ 11.51% Cu, 0.44% Zn, 53.43 ppm Ag, 3 g/t Au (1.0% Cu cut off).
- In 2015 FinnAust discovered a new ore lode (E-lode) directly east of the old decline.
 - Discovery hole 8.65m @ 2.15% Cu, 1.97% Zn, 47.46 ppm Ag, 0.5 g/t Au from 194.35 (0.2% Cu cut off) including 4.7m @ 3.65% Cu, 3.17% Zn, 81.13ppm Ag, 0.88 g/t Au (1.0% Cu cut off).
- Several ore potential, sulphide-rich contact zones have been intercepted close to the old mine – these zones might represent repetitions of the historical ore lodes.
 - ✓ All targets require follow-up drilling; drill programmes ready.
 - ✓ Additional upside also from multiple untested regional exploration targets in the central-southern parts of the belt, highlighted by high-grade Cu-Zn-Pb-Au-Ag outcrops and boulders.



Hammaslahti Cu-Zn-Au-Ag Open Pit



Long section looking WNW

Exploration and development company with a premium project portfolio in Greenland & Finland

Dundas (ilmenite sands - titanium)

- Large-scale mineral sand project awaiting mine construction and commencement of production.
- Fully permitted - 30-year Exploitation Licence granted.
- Certified EIA & SIA to highest ESG standards.
- Offtake Agreement signed for up to 340,000 tpa** (80% of planned annual production).
- Advanced discussion on project financing.

CONFIDENTIAL

Disko-Nuussuaq (Ni-Cu-Co-PGM-Au)

- Potential to host a **new world class nickel deposit** – analogues to Noril'sk Nickel District.
- District-scale polymetallic multiple targets over 2,776km² licence area – potential for world-class deposits.
- Drill ready targets** with 30-year detailed historical dataset; massive nickel-sulphides runs 6.9% Ni, 0.6% Co, 3.7% Cu, 2g/t PGM*.
- US \$15M JV with KoBold Metals** on exploration & drilling activities.



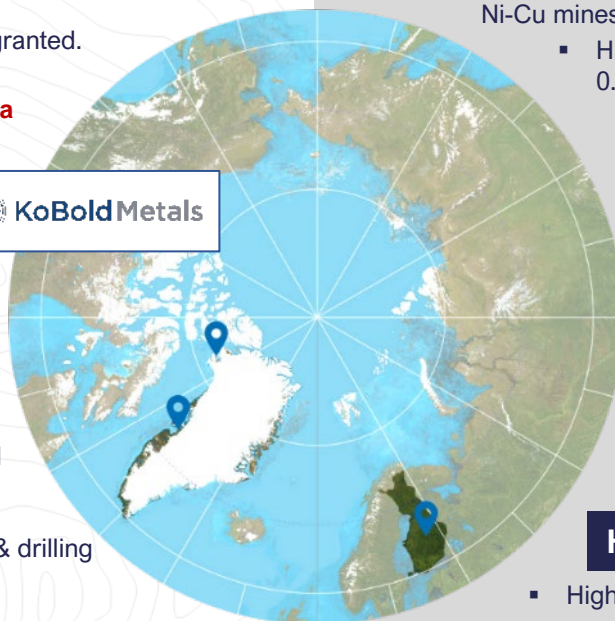
KoBold Metals

Kangerluarsuk (Zn-Pb-Ag-Cu)

- Targeting sediment-hosted Zn-Pb-Ag ± Cu deposits.
- 692km² **licence adjacent to the former high-grade Black Angel Zn-Pb-Ag mine** (produced 11.2 MT @ 12.6% Zn, 4.1% Pb and 29 g/t Ag)*.
- Drill-ready targets; drill programme ready.**

Thunderstone (Au and base metals)

- Regional scale licence (2,555 km²) – **true greenfield region; 1st phase completed.**



Enonkoski (Ni-Cu-Co-PGM)

- Bluejay licences cover entire prospective belt that hosts two former Ni-Cu mines.
- Historic drill intercepts include: 32.90m @ 4.09% Ni, 0.56% Cu, 0.17% Co and 19.70m @ 6.12% Ni, 1.94% Cu, 0.29% Co.
- US \$20M JV with Rio Tinto.**
- Drilling activities ongoing.

Rio Tinto

Outokumpu (Cu-Co-Zn-Ni-Ag-Au)

- Bluejay licences cover the majority of the Outokumpu copper belt, a **prolific mining district.**
- Several former high-grade mines – entire Outokumpu Belt produced 44Mt @ 3.1% Cu. The Outokumpu (Keretti) and Vuonos Mines produced combined 34.4 Mt @ 3.6% Cu*.
- New near-mine and along strike targets; drill ready.**

Hammashlathi (Cu-Zn-Au-Ag)

- High-grade VMS mineralisation. Bluejay licences cover **entire prospective belt.**
- Former open-pit & underground mine** produced +10 Mt @ 1.16% Cu, 1.55% Zn, 0.59 g/t Au and 5.2 g/t Ag between 1973-86*.
- Extensions to the mined orebody demonstrated by recent drilling, and several near-mine geophysical targets. **Drill ready.**

Black Shales Project (Ni-Zn-Cu-Co)

- Partial divestment** of Paltamo and Rautavaara projects in Finland to Metals One plc - cash and shares of **US \$5.5M.**
- Bluejay will appoint the technical director to the board.

Metal One Plc



Listed on London AIM ('JAY')
US OTC ('BLLYF') and Frankfurt
(('S5WA')) Exchanges.
Current Market Capitalisation of
c. £120M GBP

£/€

Strong institutional backing
& Greenlandic & Danish Government backed
institutional investors



Skilled Board, Management & Consultancy
teams. Strong experienced in-country
resources, develop and operational
expertise
linked with business and commodity market
expertise.



March 2018: Prospector and
Developer of the Year 2017 by
Government of Greenland

High ESG Standards
Trusted local partner

*Not JORC Compliant



Bo Møller Stensgaard

Managing Director, CEO

bms@bluejaymining.com

Rod McIlree

Executive Chairman

rod@bluejaymining.com

Kevin Sheil

Corporate Development & Strategy

kevin@bluejaymining.com