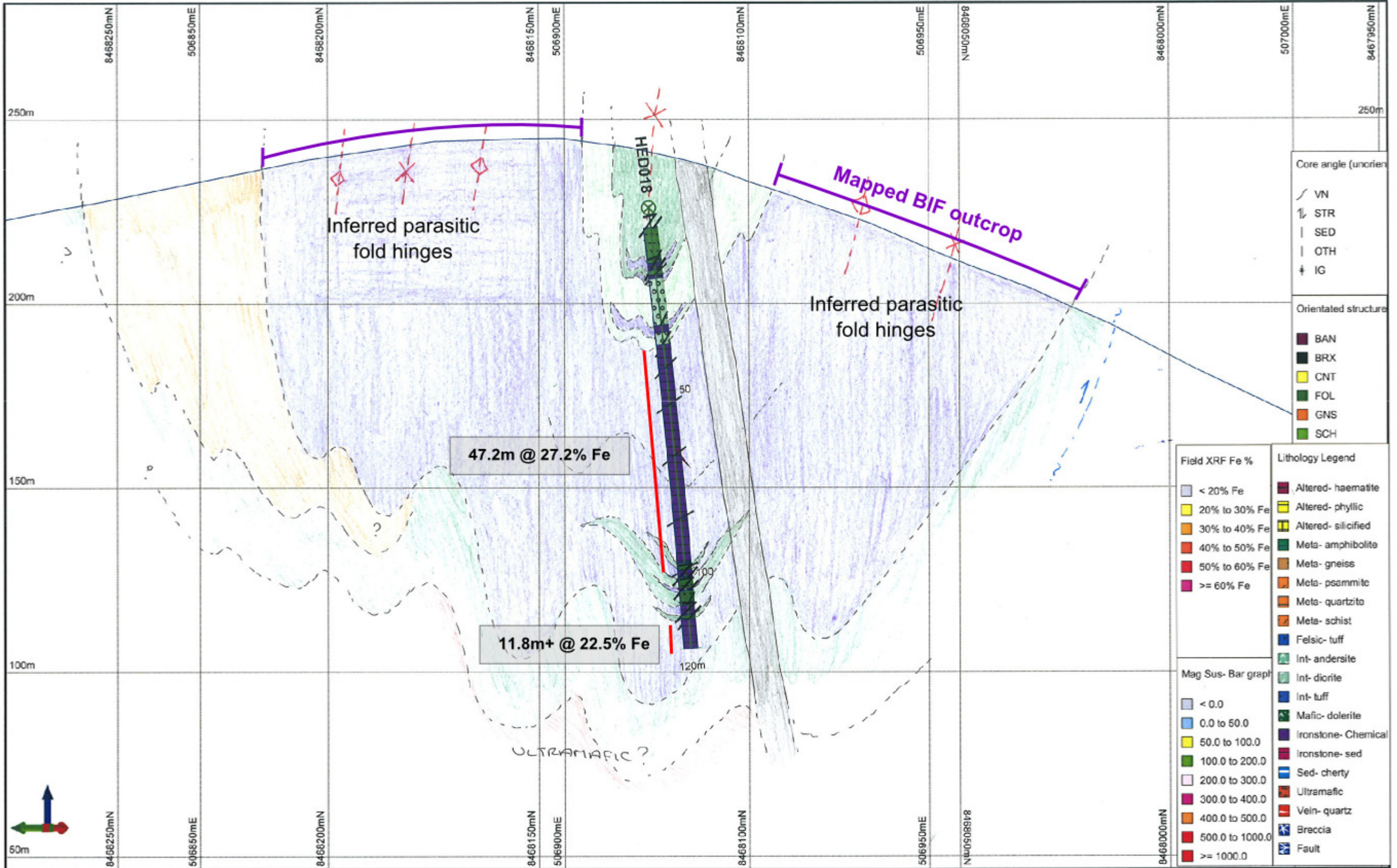


NW

SE



Core angle (unorient)

↘	VN
↕	STR
	SED
	OTH
+	IG

Orientated structure

■	BAN
■	BRX
■	CNT
■	FOL
■	GNS
■	SCH

Field XRF Fe %

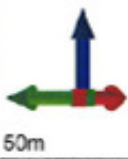
■	< 20% Fe
■	20% to 30% Fe
■	30% to 40% Fe
■	40% to 50% Fe
■	50% to 60% Fe
■	>= 60% Fe

Lithology Legend

■	Altered- haematite
■	Altered- phyllic
■	Altered- silicified
■	Meta- amphibolite
■	Meta- gneiss
■	Meta- psammite
■	Meta- quartzite
■	Meta- schist
■	Felsic- tuff
■	Int- andersite
■	Int- diorite
■	Int- tuff
■	Mafic- dolerite
■	Ironstone- Chemical
■	Ironstone- sed
■	Sed- cherty
■	Ultramafic
■	Vein- quartz
■	Breccia
■	Fault

Mag Sus- Bar graph

■	< 0.0
■	0.0 to 50.0
■	50.0 to 100.0
■	100.0 to 200.0
■	200.0 to 300.0
■	300.0 to 400.0
■	400.0 to 500.0
■	500.0 to 1000.0
■	>= 1000.0



Notes: with alpha angles

Notes: Section window +/- 100m

Scale 1:1000
 Plot Date 09-Oct-2012
 Sheet 1 of 1
 Plot File: Vizex

Havik North East
 X section looking NE
 150 degrees
 Center of section 506550 + 400

Melville Bugt Project