

Figure One | Panton Location

	Tonnage (Mt)	Grade					Contained	
		PGM (g/t)	Au (g/t)	Ni (%)	Cu (%)	Co (ppm)	PGM ('000oz)	Ni (t)
Top Reef								
Measured	4.40	5.58	0.42	0.28	0.08	209	850	12,214
Indicated	4.13	6.26	0.38	0.31	0.09	232	880	12,745
Inferred	1.56	4.72	0.38	0.36	0.13	233	260	5,619
	10.09	5.73	0.40	0.30	0.09	222	1,990	30,579
Middle Reef								
Measured	2.13	2.76	0.10	0.18	0.03	186	200	3,783
Indicated	1.50	3.17	0.10	0.19	0.04	199	160	2,858
Inferred	0.60	2.58	0.10	0.19	0.05	195	50	1,161
	4.23	2.90	0.10	0.19	0.04	193	410	7,840
Total	14.32	4.89	0.31	0.27	0.08	214	2,400	38,419

Table One | Panton JORC 2012 MRE

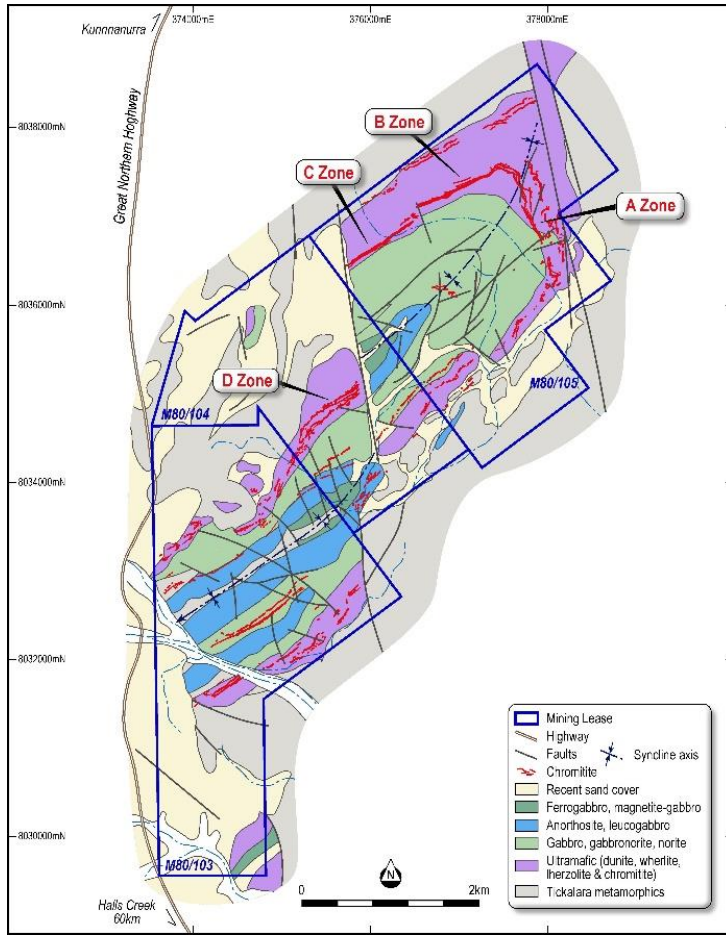


Figure Two | Panton Geology Showing the A, B, C and D Blocks

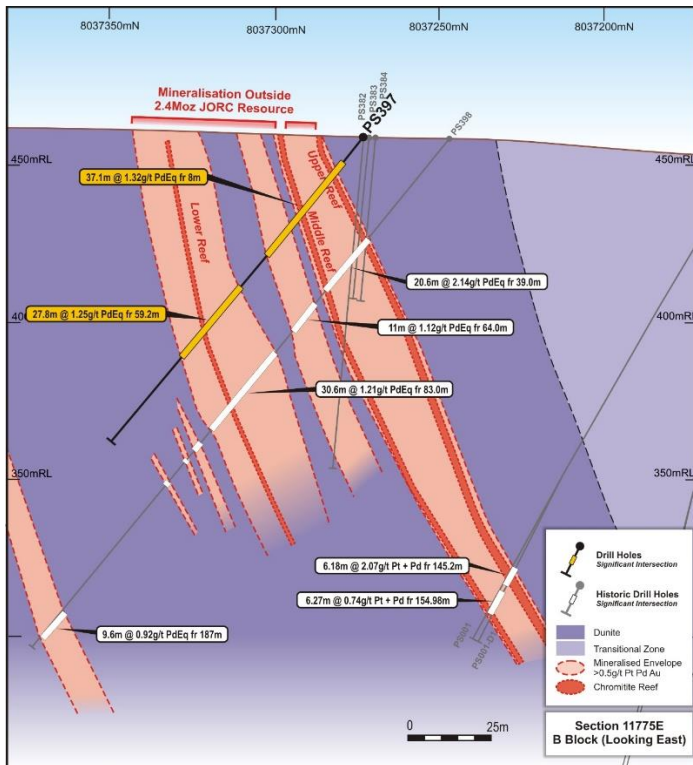


Figure Three | Future Metals' Exploration Drilling (PS397) - Panton Cross Section

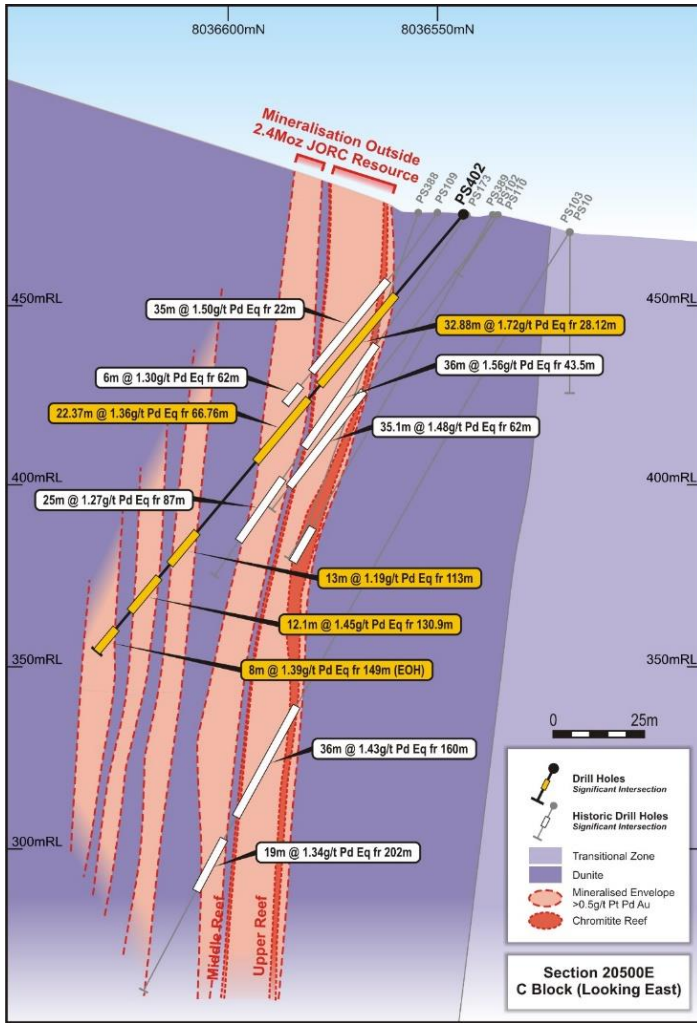


Figure Four | Future Metals' Exploration Drilling (PS402) - Panton Cross Section

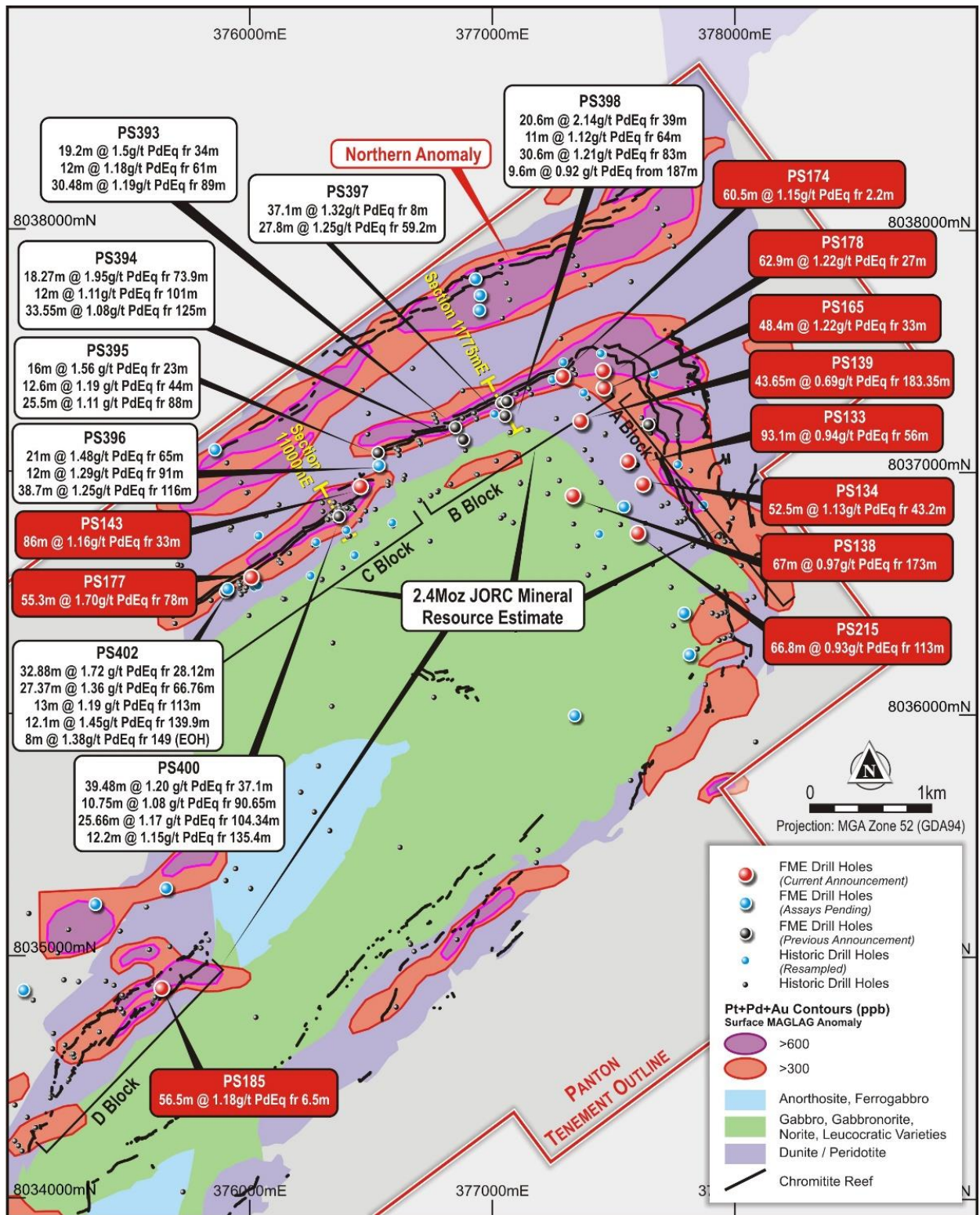


Figure Five | Panton Drill Hole Plan