



ROCKFIRE
RESOURCES

(LON:ROCK)

Exploring for gold and copper in Australia and
Papua New Guinea

Disclaimer

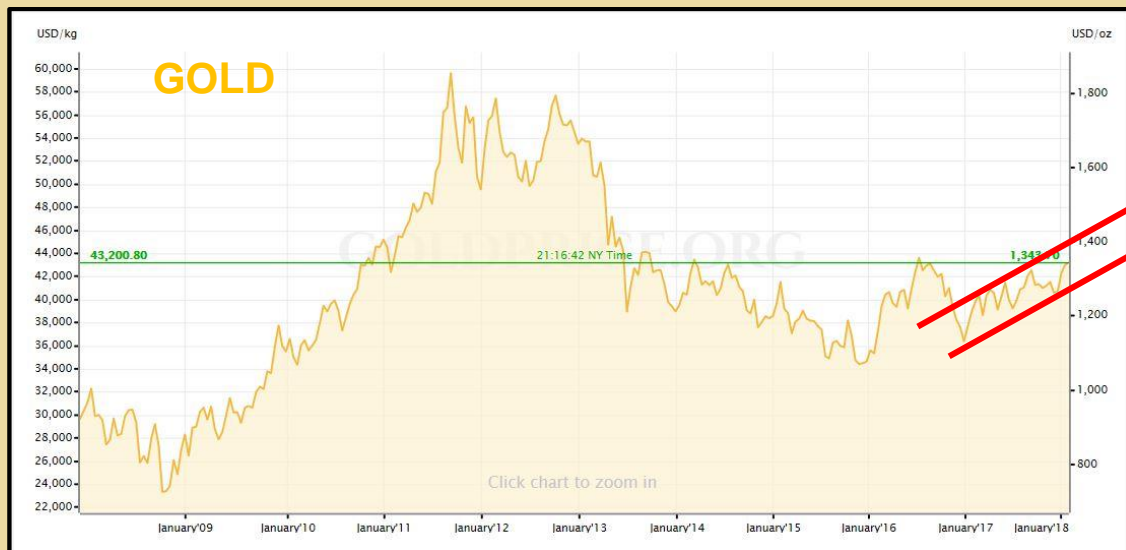
Important Information

This presentation has been prepared by Rockfire Resources plc (**“ROCK”** or the “Company”). It should not be considered as an offer or invitation to subscribe for, or purchase any, securities in the Company or as an inducement to make an offer or invitation with respect to those securities. This presentation contains forecasts, projections and forward looking information. Such forecasts, projections and information are not a guarantee of future performance and involve unknown risks and uncertainties, many of which are out of ROCK’s control. Actual results and developments will almost certainly differ materially from those expressed or implied. ROCK has not audited or investigated the accuracy or completeness of the information, statements and opinions contained in this presentation. To the maximum extent permitted by applicable laws, ROCK makes no representation and can give no assurance, guarantee or warranty, express or implied, as to, and takes no responsibility and assumes no liability for (1) the authenticity, validity, accuracy, suitability or completeness of, or any errors in or omission from, any information, statement or opinion contained in this presentation and (2) without prejudice to the generality of the foregoing, the achievement or accuracy of any forecasts, projections or other forward looking information contained or referred to in this presentation. This overview of the Company does not purport to be all inclusive or to contain all information which its recipients may require in order to make an informed assessment of ROCK’s targeted prospects. You should conduct your own investigation and perform your own analysis in order to satisfy yourself as to the accuracy and completeness of the information, statements and opinions contained in this presentation before making any investment decision.

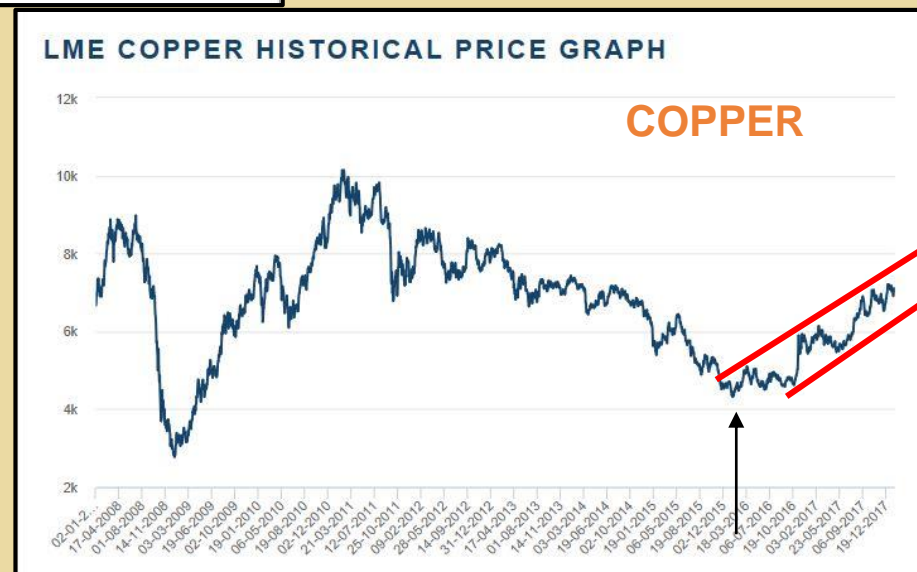
Rockfire Resources – exploring amongst giants

- ✓ Exploring amongst world-class deposits in Australia and PNG
- ✓ Excellent opportunity for discovery of economic deposits
- ✓ A determined, experienced and successful technical board of directors
- ✓ Aiming to build a growth company providing returns for investors
- ✓ Low m/cap, low share issue, cash in bank and growth strategy
- ✓ A substantial portfolio of 100%-owned, highly prospective projects
- ✓ Proactive and strategic ground acquisition

Rockfire Resources – 10-year gold and copper



Source: www.goldprice.org



Source: www.lme.com/Metals/Non-ferrous/Copper

ROCKFIRE

Rockfire Resources – company profile

AIM Code: PML

Ordinary Shares (million)	343.34
Market Cap (£0.0085)	£2.92M
Cash at 31 May 2018	£0.63M
Debt at 31 May 2018	£0

Shareholder	Shares (M)	%
Michael Somerset-Leeke	51.15	14.90
Nicholas Walley	31.02	9.03
Value Generation/P. & M. Johnson	20.87	7.02
Salida Capital (Europe) Limited	14.89	4.34
Blue Lake Resources Pty Ltd	14.00	4.08
David W Price	13.60	3.96
A&H Advisory	13.00	3.79
	47.12	

Directors & Management

Gordon Hart	Non Executive Chairman
David Price	Managing Director & CEO
Edward Fry	Exploration Manager

Directors & Management hold 7.75% of PML

Rockfire Resources – board of directors and management

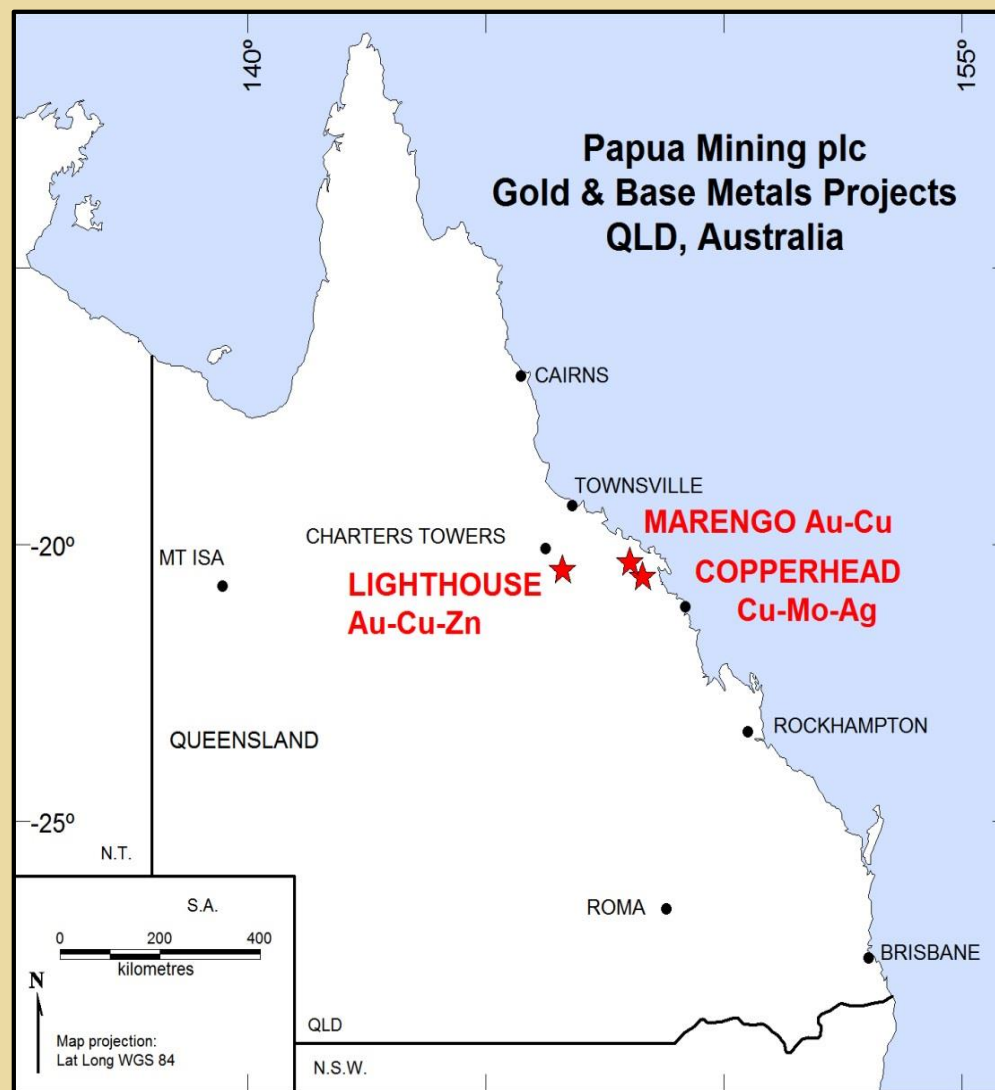
- Gordon Hart **Chairman**
Equities and Finance, (+35 years experience)
Graduate of Institute of Company Directors
Venture Group Equities, GB Energy,
Convergent Minerals, Information
- David Price **Managing Director and CEO (FAusIMM)**
Geologist, (30 years experience)
Australia, PNG, Fiji, China, Greece, Austria
Convergent Minerals, Golden Tiger Mining, Millennium
Mining (Fiji), Danae Resources, Hargraves Resources
- Edward Fry **Exploration Manager (MAusIMM)**
Geologist, (10 years experience)
Australia, Papua New Guinea, China
Mill Resources, Artemis Resources, BGM
Investments, Kings Minerals, Convergent
Minerals, Legend International, Golden Tiger
Mining,



Australia

ROCK owns 100%
of all tenements

- **'Lighthouse'** Breccia-hosted Au/Cu +/- Ag
Sits amongst giants
- **'Marengo'** Epithermal Au/Cu, IRGS
Historical goldfield (1871)
- **'Copperhead'** Porphyry Cu
Included in the USGS 'Global Mineral Resource Assessment'

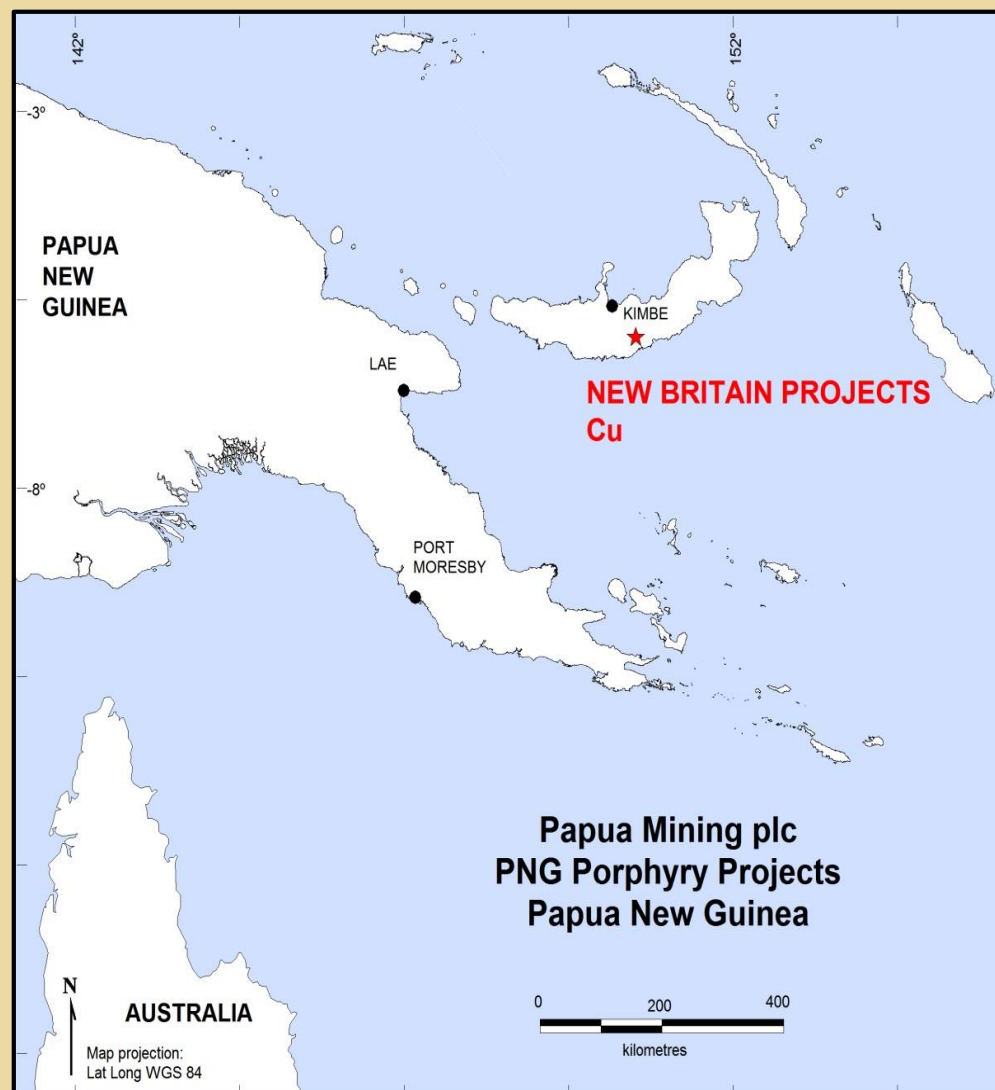


“Staged exploration programmes with the aim to deliver a JORC resource”

Papua New Guinea

ROCK owns 100%
of all tenements

- **'Tripela'** Porphyry Cu
Rocks up to 29% Cu at surface
- **'Mount Visi'** Porphyry Cu
New discovery, rocks up to 35.5
g/t Au and 4% Cu.





Lighthouse

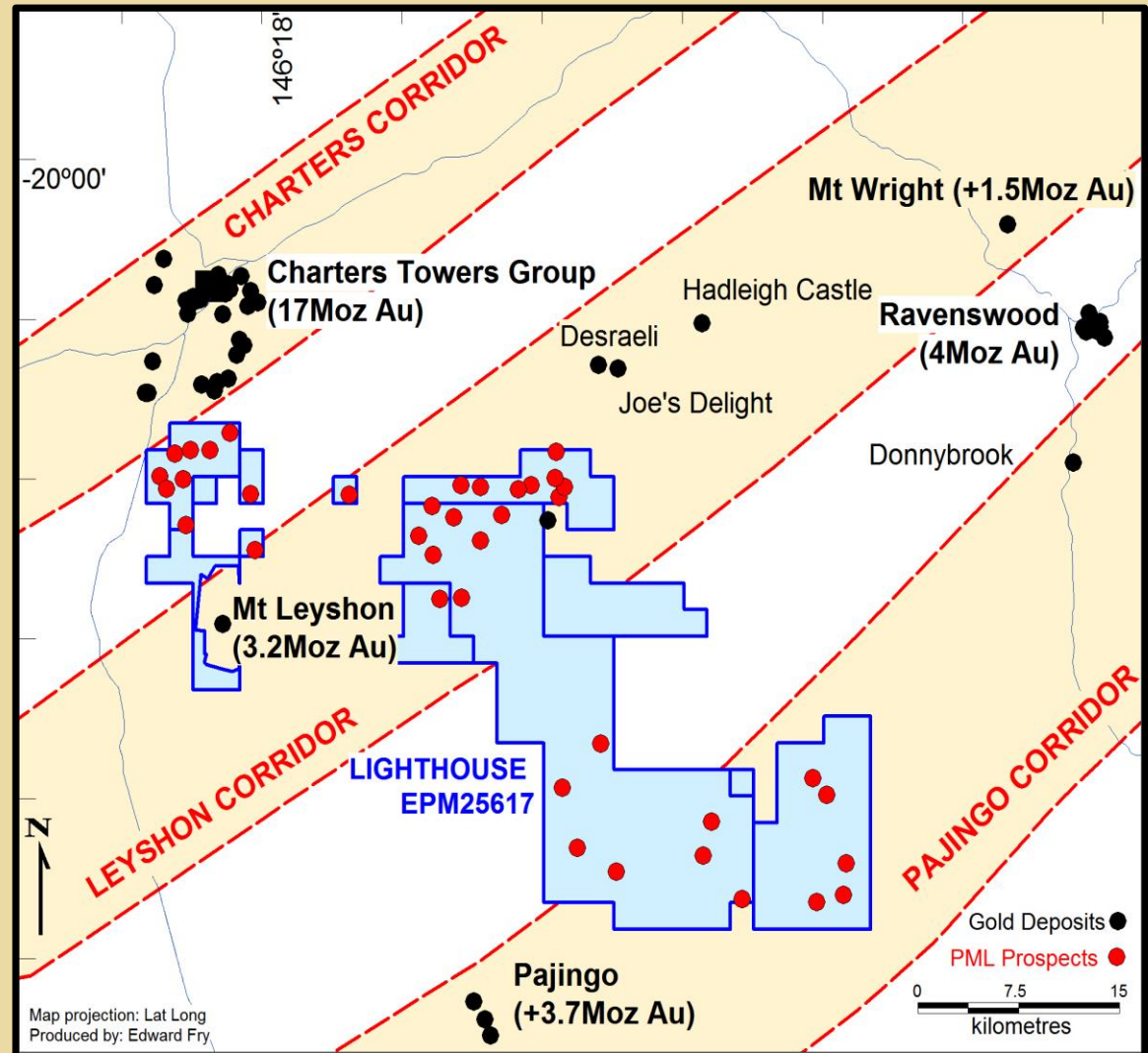
Queensland, Australia

636 sq. km.

Multiple breccia, epithermal and
vein-hosted mineralising systems

Lighthouse strong potential

- Regional production +20moz Au
- Previous Pennaroya, ESSO, City Resources, CRA , Aberfoyle, Newcrest, Ramelius, Liontown.
- 20km from Pajingo Gold Mine (operating)
- Surround Mt Leyshon Gold Mine lease (C&M)
- Numerous prospect targets



Lighthouse plateau prospect

Assay results from Nov/Dec 2017 drilling include:

- 22m @ 1.9 g/t Au + 22.3 g/t Ag (**39m downhole**)
- 18m @ 1.0 g/t Au + 10.5 g/t Ag (**119m downhole**)
- 20m @ 0.5 g/t Au + 2.5 g/t Ag (**16m downhole**)
- 10m @ 1.9 g/t Au + 9.0 g/t Ag (**18m downhole**)

Assay results from Nov/Dec 2017 drilling also included:

- 22m @ 0.4 % Zn (**0m downhole**)
- 24m @ 0.5 % Zn (**25m downhole**)
- 16m @ 1.1 % Zn (**129m downhole**)
- 43m @ 2.0 g/t Ag (**0m downhole**)
- 40m @ 3.0 g/t Ag (**55m downhole**)
- 20m @ 0.2 % Cu (**0m downhole**)

Historical drilling results include:

- 44m @ 2.4 g/t Au
- 10m @ 5.0 g/t Au
- 8m @ 3.0 g/t Au
- 14m @ 2.4 g/t Au
- 3m @ 4.9 g/t Au

**RC DRILLING
NOV/DEC 2017**



Unexplored beneath 130 m from surface, except for 1 hole which discovered 2m @ 1.1g/t Au from 645 m to 647 m downhole.

Lighthouse double event prospect

- Abundant quartz veining
- Gold assays include; 37.7g/t, 33.3g/t, 33.1g/t, 25.9g/t, 24.3g/t, 23.5g/t
- Silver assays include; 56.8g/t, 54.0g/t, 52.7g/t, 46.7g/t, 38.7g/t and 37.1g/t
- Lead assays include; 4.46%, 3.64% and 3.29% Pb
- The average of all rock samples collected by PML is 8.45g/t Au, with 76% of results over 1g/t Au
- A quarter of all samples (25%) returned gold in excess of 10g/t Au.

Papua Mining plc				
Lighthouse Project, Double Event Prospect				
Rock sampling February 2018				
Sample Number	Au ppm	Ag ppm	Pb ppm	Pb %
BDERS001	19.15	52.70	13,750	1.38
BDERS002	2.33	54.00	8,070	0.81
BDERS003	2.89	33.60	18,400	1.84
BDERS005	7.85	14.55	4,570	0.46
BDERS008	21.50	23.90	18,500	1.85
BDERS014	13.80	24.30	12,300	1.23
BDERS017	6.25	12.05	1,035	0.10
BDERS018	37.70	46.70	18,250	1.83
BDERS021	21.90	26.10	8,940	0.89
BDERS022	33.30	32.20	17,150	1.72
BDERS023	7.11	19.40	4,260	0.43
BDERS024	2.84	1.36	1,640	0.16
BDERS027	9.41	17.45	7,030	0.70
BDERS028	2.33	3.15	1,070	0.11
BDERS029	5.55	6.65	2,450	0.25
BDERS030	15.80	7.70	6,700	0.67
BDERS033	3.62	29.10	209	0.02
BDERS036	3.08	2.49	2,490	0.25
BDERS037	33.10	13.95	3,910	0.39
BDERS038	7.54	9.21	15,650	1.57
BDERS039	7.22	12.85	2,160	0.22
BDERS041	23.10	56.80	44,600	4.46
BDERS042	24.30	17.20	16,000	1.60
BDERS044	2.16	2.72	4,080	0.41
BDERS045	8.77	37.10	32,900	3.29
BDERS046	2.09	2.31	5,310	0.53
BDERS048	25.90	38.70	36,400	3.64
BDERS049	23.50	17.30	1,480	0.15

**ROCK SAMPLING
FEBRUARY 2018**

ROCKFIRE

Lighthouse double event prospect

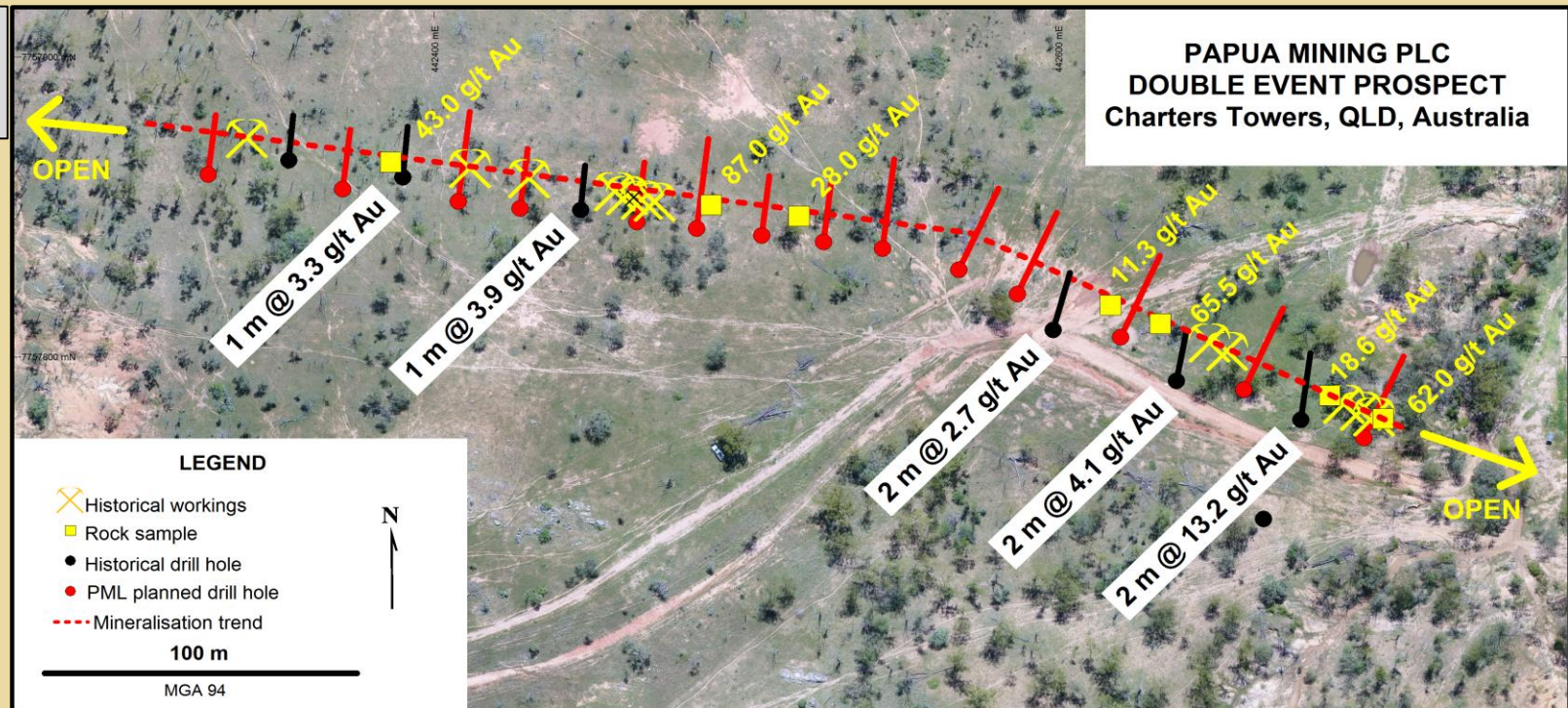
Parallel lodes and old workings extend for over 3km strike

Mining during 1900 returned 1,744oz from 1,889 tons of ore (28.7g/t Au)

Battle Mountain drill results 1987

- 2m @ 13.2 g/t Au
- 4m @ 4.65 g/t Au
- 1m @ 3.93 g/t Au
- 4m @ 2.87g/t Au
- 1m @ 3.25g/t Au
- 1m @ 2.94g/t Au
- 2m @ 2.7g/t Au

RC DRILLING JUNE 2018





Marengo

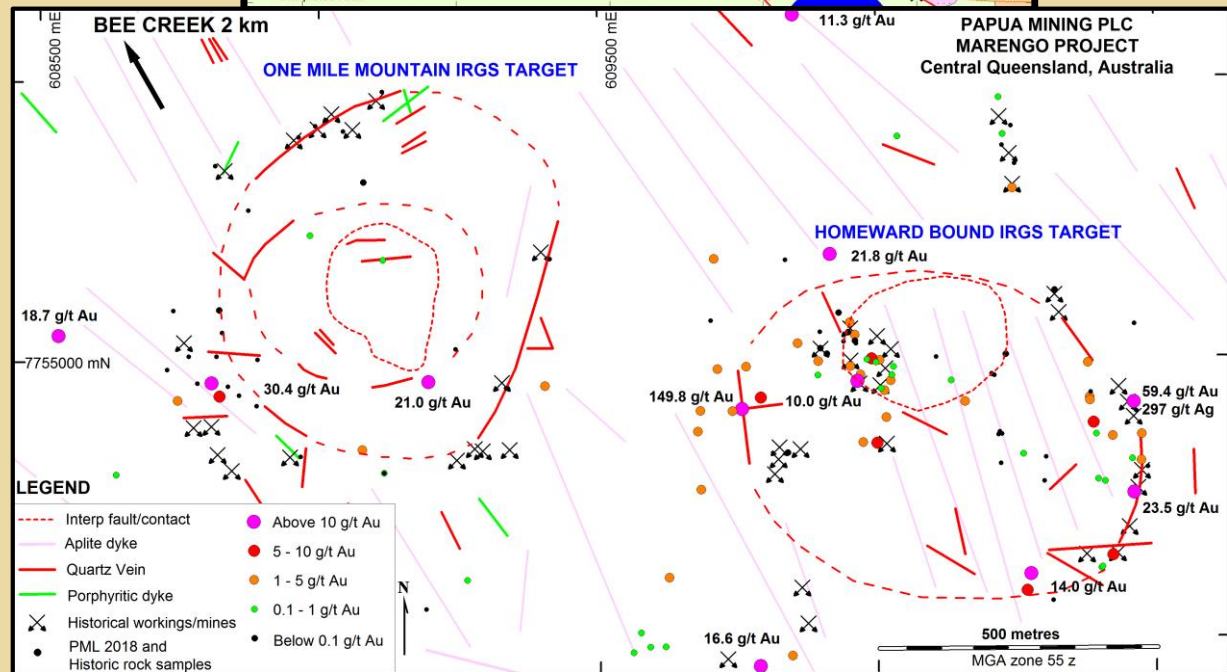
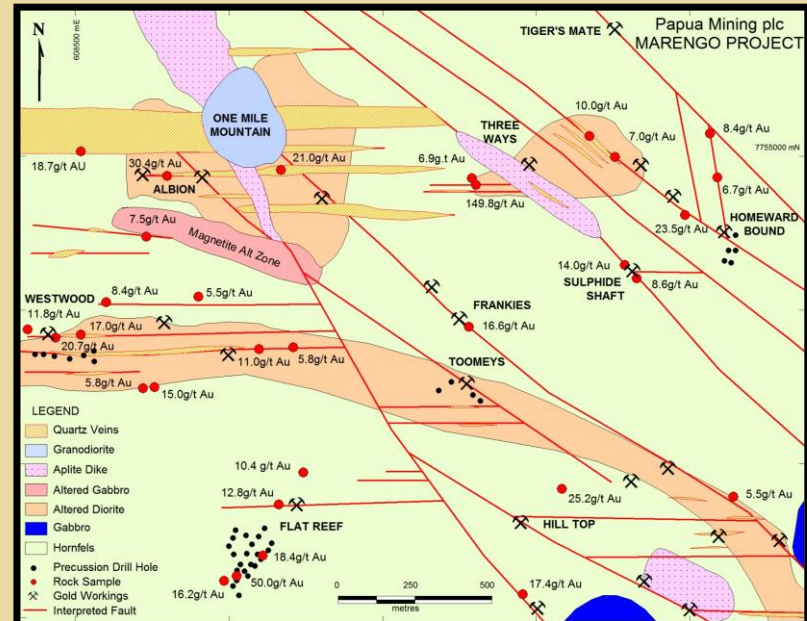
Queensland, Australia

180 sq. km.

Epithermal and Intrusion-
related gold system (IRGS)

Marengo multiple intrusive events

- Historical Goldfield discovered in 1871
- 37 gold workings with very high-grade rocks
- 55km from Mt Carlton Gold Mine
- 38 shallow holes drilled at 4 sites
- Costean at Flat Reef 12m @ 6.1 g/t Au
- One Mile Mountain is undrilled



Marengo high grade rock samples

Faults, ring-fractures, veining, sulphides and alteration form circular patterns;



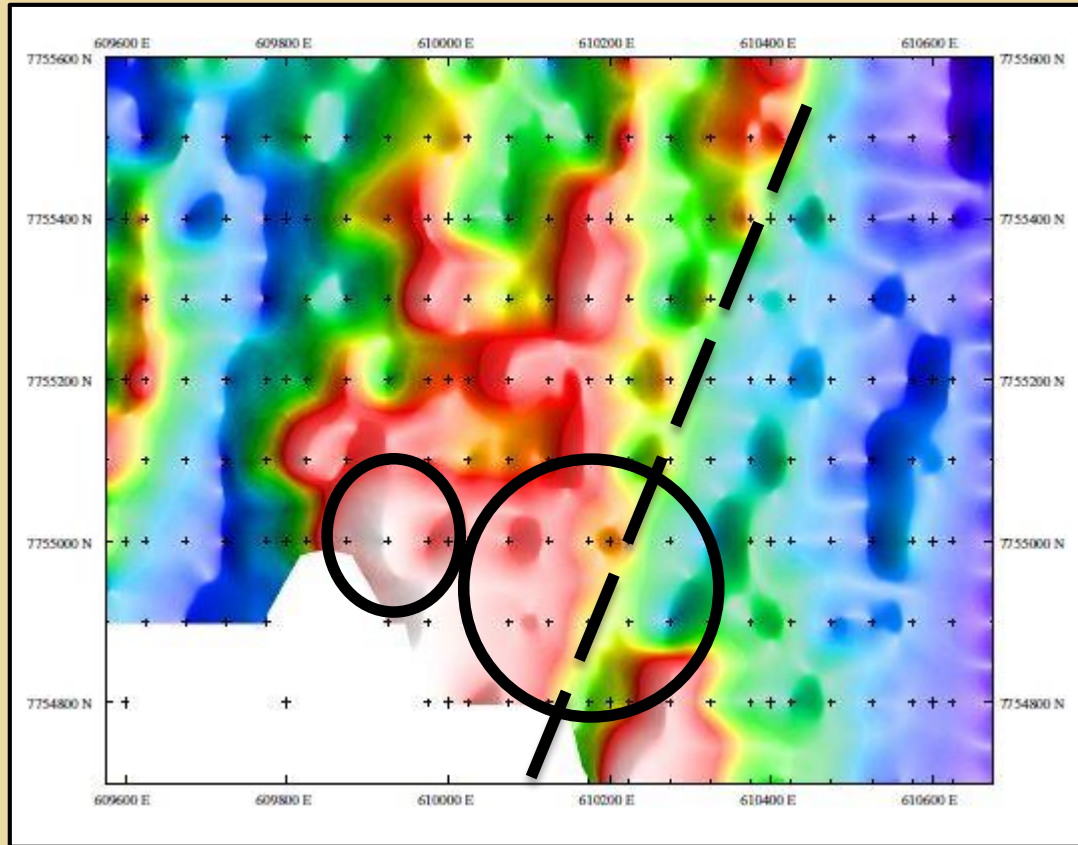
**ROCK SAMPLING
APRIL 2018**

69 rock samples collected - maximum assays were 59.4g/t Au, 17.7% Cu and 342g/t Ag;

ROCKFIRE

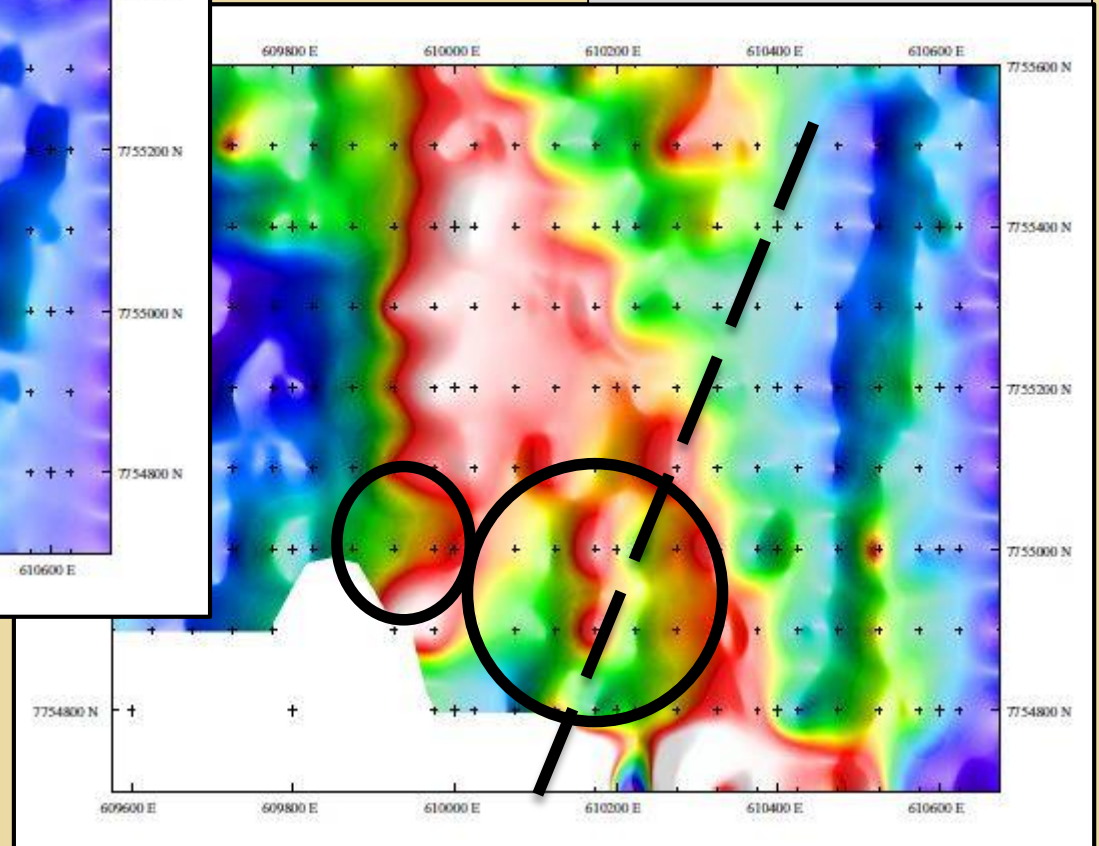
SAMPLE DESCRIPTION	Au ppm	Ag ppm	Cu ppm	Cu %
BMARS010	3.32	2.1	1,845	0.2
BMARS012	2.92	13.6	1,770	0.2
BMARS013	1.14	2.7	2,060	0.2
BMARS016	2.40	16.7	24	
BMARS017	4.11	2.4	456	
BMARS019	21.80	21.1	162	
BMARS025	2.27	25.9	60	
BMARS028	59.40	297.0	110	
BMARS029	15.60	165.0	9	
BMARS035	2.86	13.3	47	
BMARS038	0.36	0.7	35,000	3.5
BMARS039	0.01	0.3	46,000	4.6
BMARS040	3.18	3.7	1,140	
BMARS044	28.20	146.0	31	
BMARS051	0.68	8.3	3,400	0.3
BMARS052	34.30	99.0	102	
BMARS053	3.70	3.5	29,000	2.9
BMARS057	<0.01	4.4	3,710	0.4
BMARS058	0.06	70.6	51,000	5.1
BMARS059	0.15	183.0	173,000	17.3
BMARS060	0.03	37.3	70,000	7.0
BMARS061	0.17	7.7	7,930	0.8
BMARS062	0.37	342.0	177,000	17.7
BMARS064	0.11	7.6	4,360	0.4
BMARS066	0.18	13.0	1,580	0.2

Marengo Homeward Bound Prospect



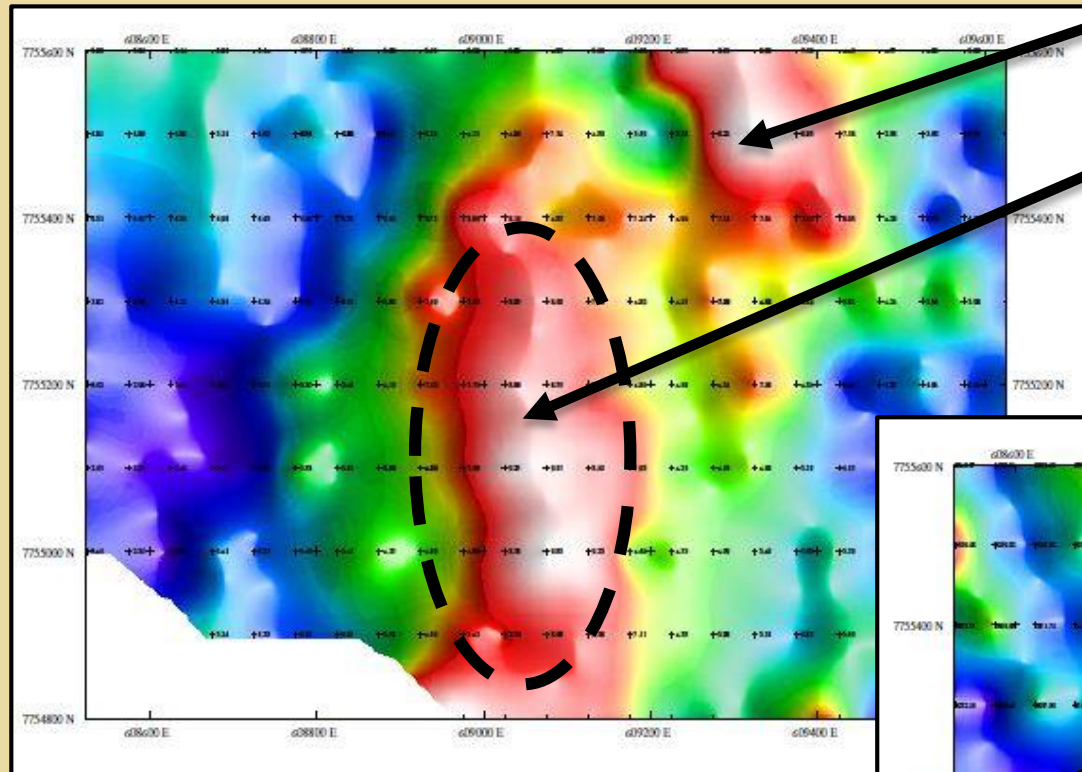
Gradient Array chargeability high anomaly

GEOPHYSICS MAY 2018



Gradient Array resistivity low anomaly

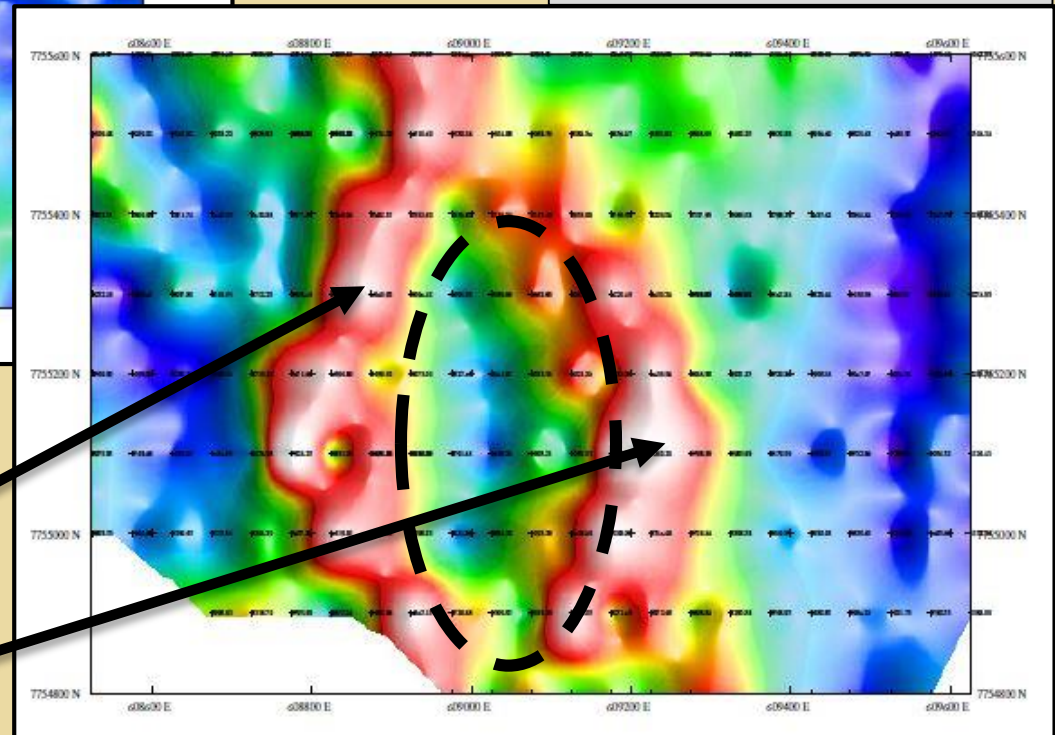
Marengo One Mile Mountain Prospect



Possible copper porphyry
with up to 1-2% sulphides

GEOPHYSICS MAY 2018

Gradient Array chargeability high anomaly



Possible epithermal vein gold
system with silica alteration

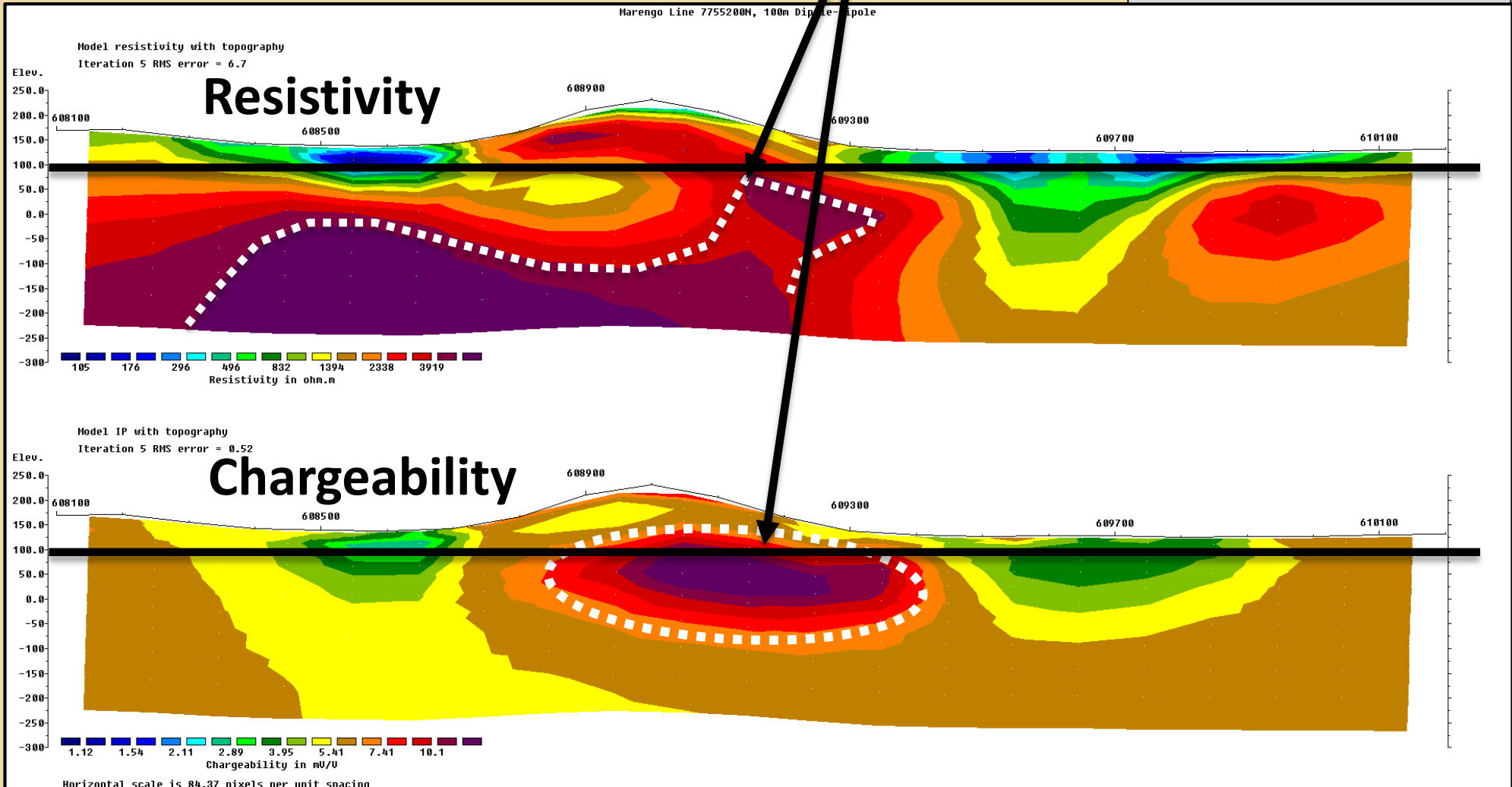
Gradient Array resistivity low anomaly

Marengo One Mile Mountain Prospect

Possible top of porphyry copper

Dipole-Dipole survey May 2018

GEOPHYSICS MAY 2018



ROCKFIRE



Copperhead

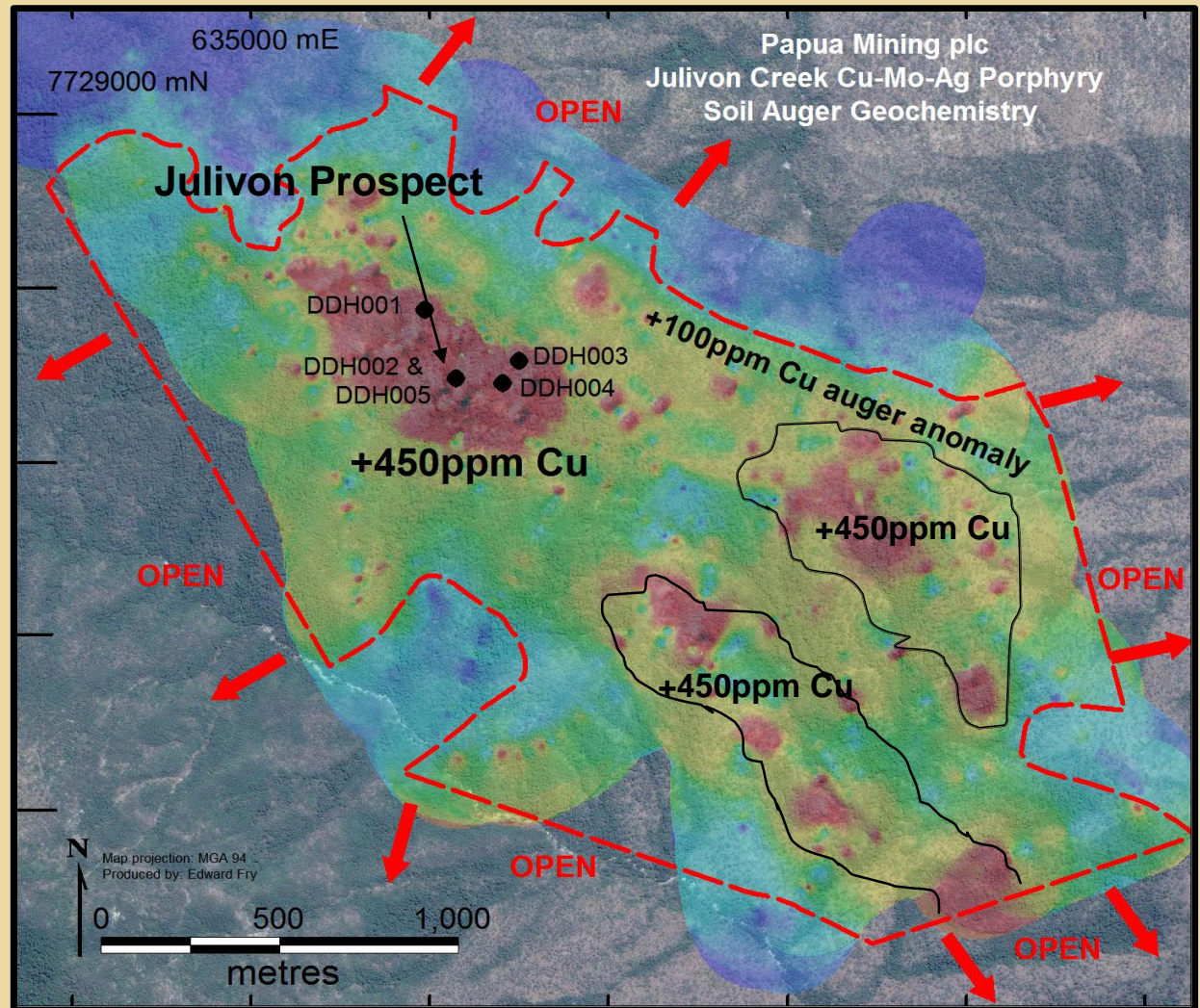
Queensland, Australia

96.5 sq. km.

Porphyry Copper

Copperhead **open in all directions**

- 1970 Cu vein discovered at Julivon in 1970
- Auger drilling outlined a coherent +100ppm copper-in-soil anomaly in excess of 3km x 2km
- 5 holes by Carpentaria Exploration in 1972.
(weighted average 0.25% Cu + 2.1g/t Ag)
- Includes
2.81% Cu + 12g/t Ag
potential for high-grade



Listed in the USGS 'Global Mineral Resource Assessment'

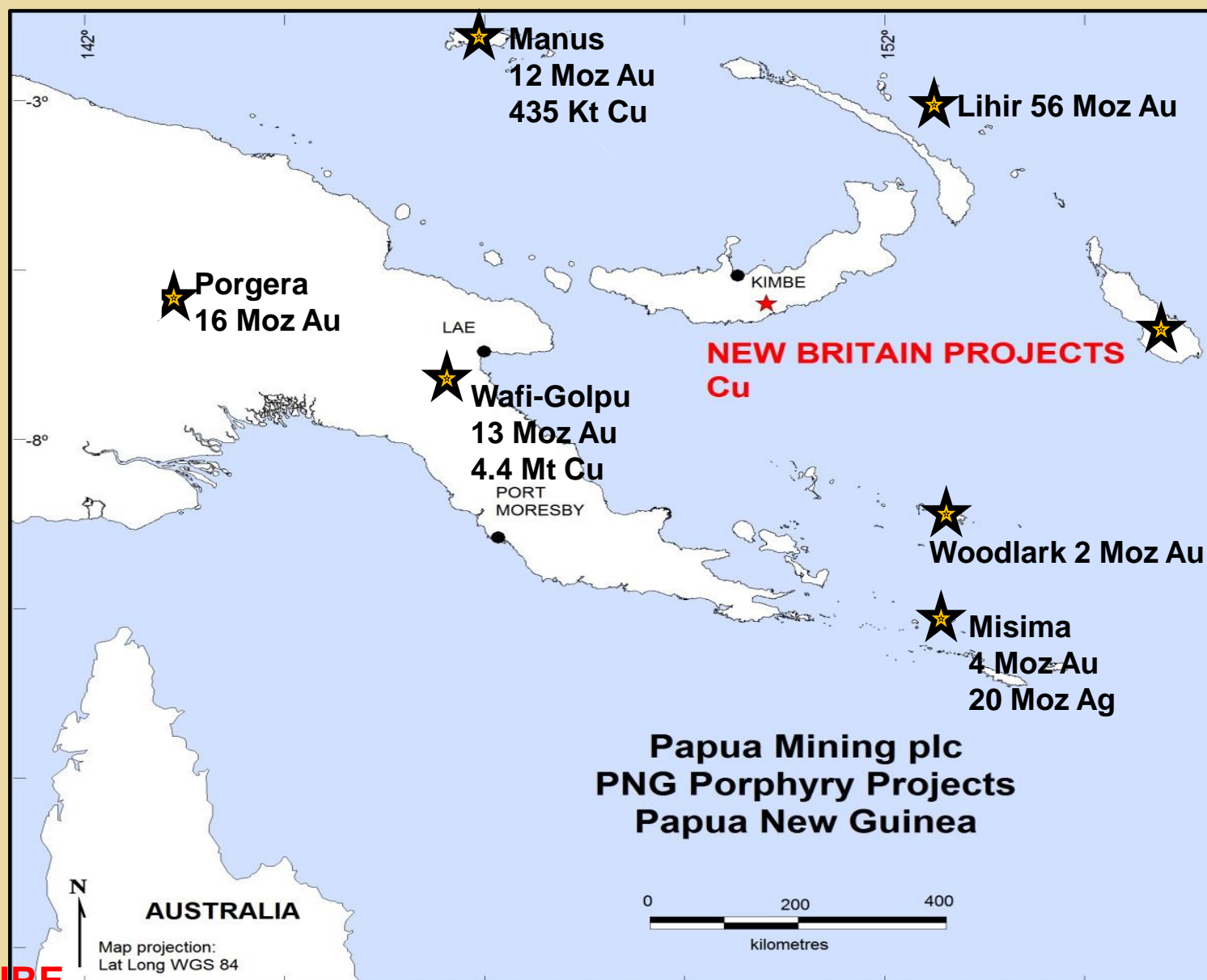


Papua New Guinea

New Britain
(297.6 sq. km)

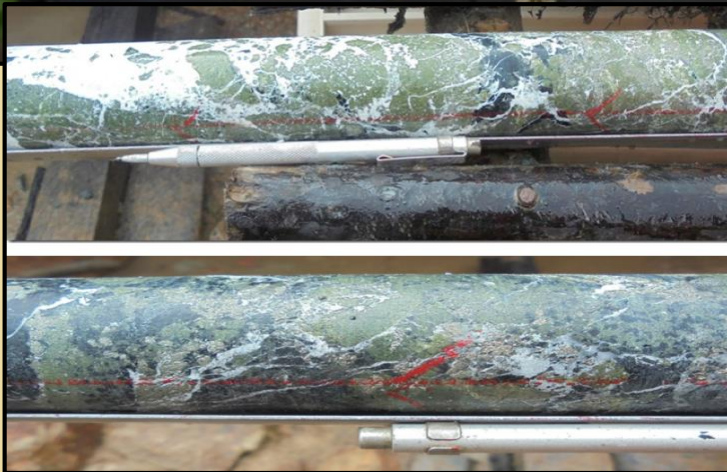
Porphyry copper/gold

Papua New Guinea 'elephant' territory



Tripela **intensely altered and mineralised**

Up to 29% Cu in outcrop at Tripela



**Up to 35.5g/t Au and
4% Cu in outcrop at Mt Visi**

ROCKFIRE

Rockfire Resources

what we have achieved!

Lighthouse

- x Geophysics at Plateau (review old data)
- ✓ RC drilling
- ✓ Regional assessment

Marengo

- ✓ Geophysics at One Mile Mountain
- ✓ Rock sampling
- x XRF survey One Mile Mtn (sporadic outcrop)

Copperhead

- Geophysics at Julivon Creek

Papua New Guinea

- ✓ Review Tripela and Mt Visi

what can you expect?

Lighthouse

- RC drilling at Double Event
- Mapping & sampling at Redwing
- Further regional assessment

Marengo

- Grid-based mapping & sampling
- Further geophysics
- RC drilling At One Mile Mountain

Copperhead

- Geophysics at Julivon Creek

Papua New Guinea

- Revision of strategy