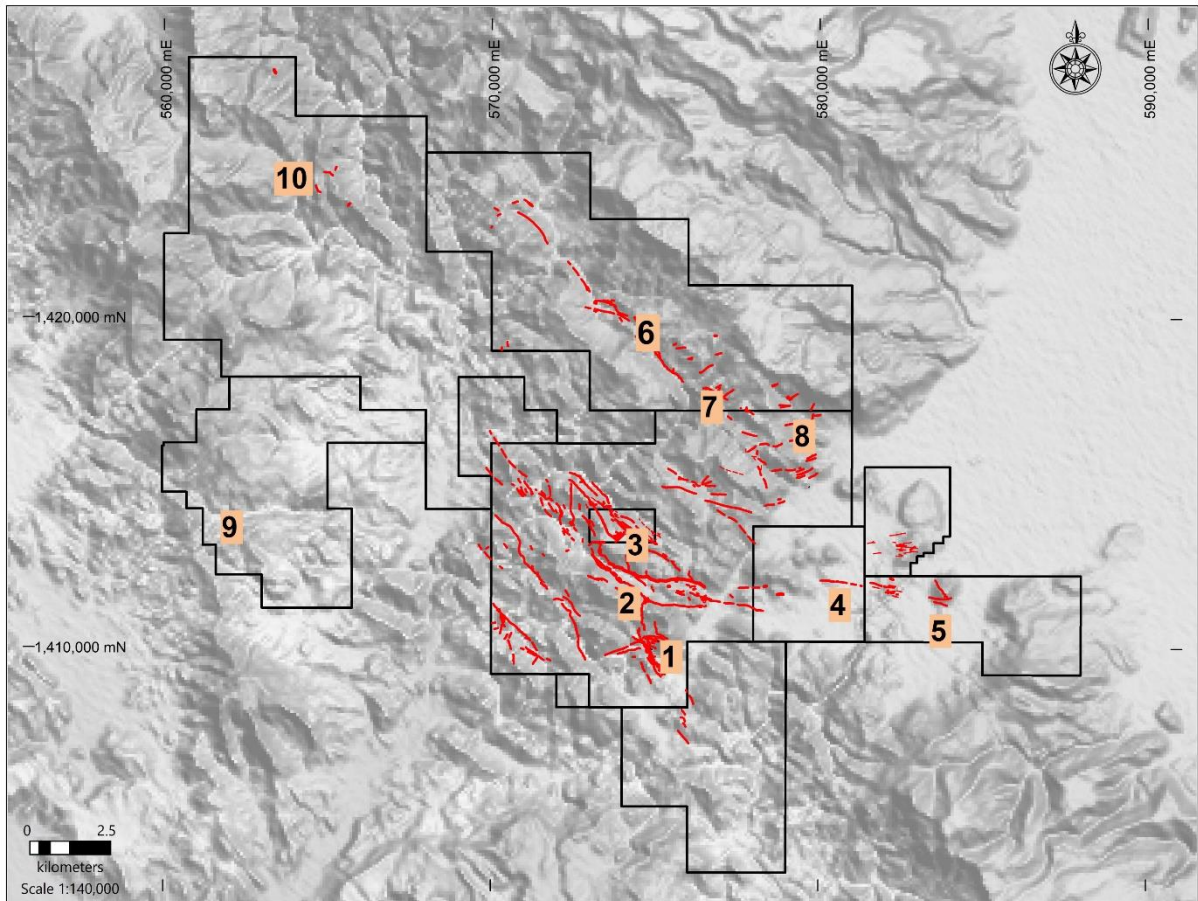
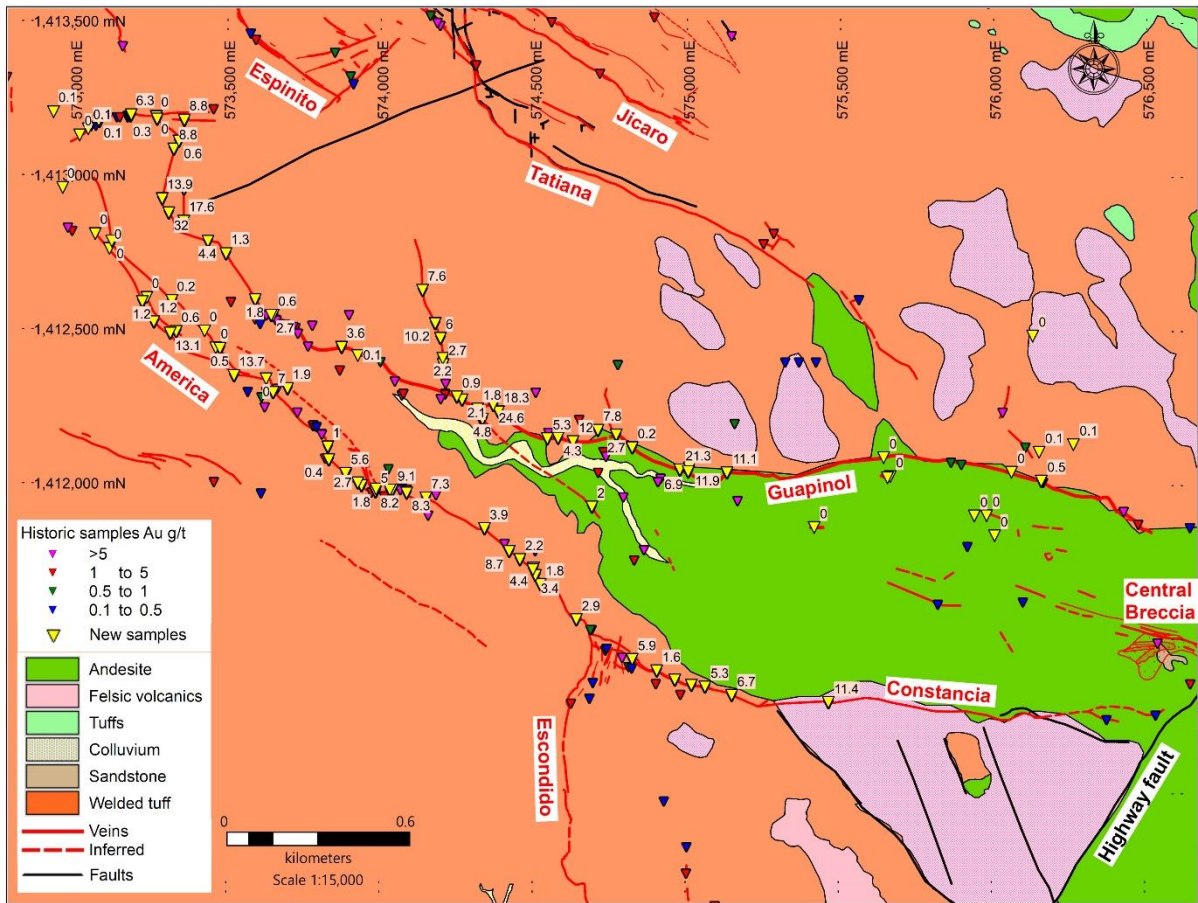


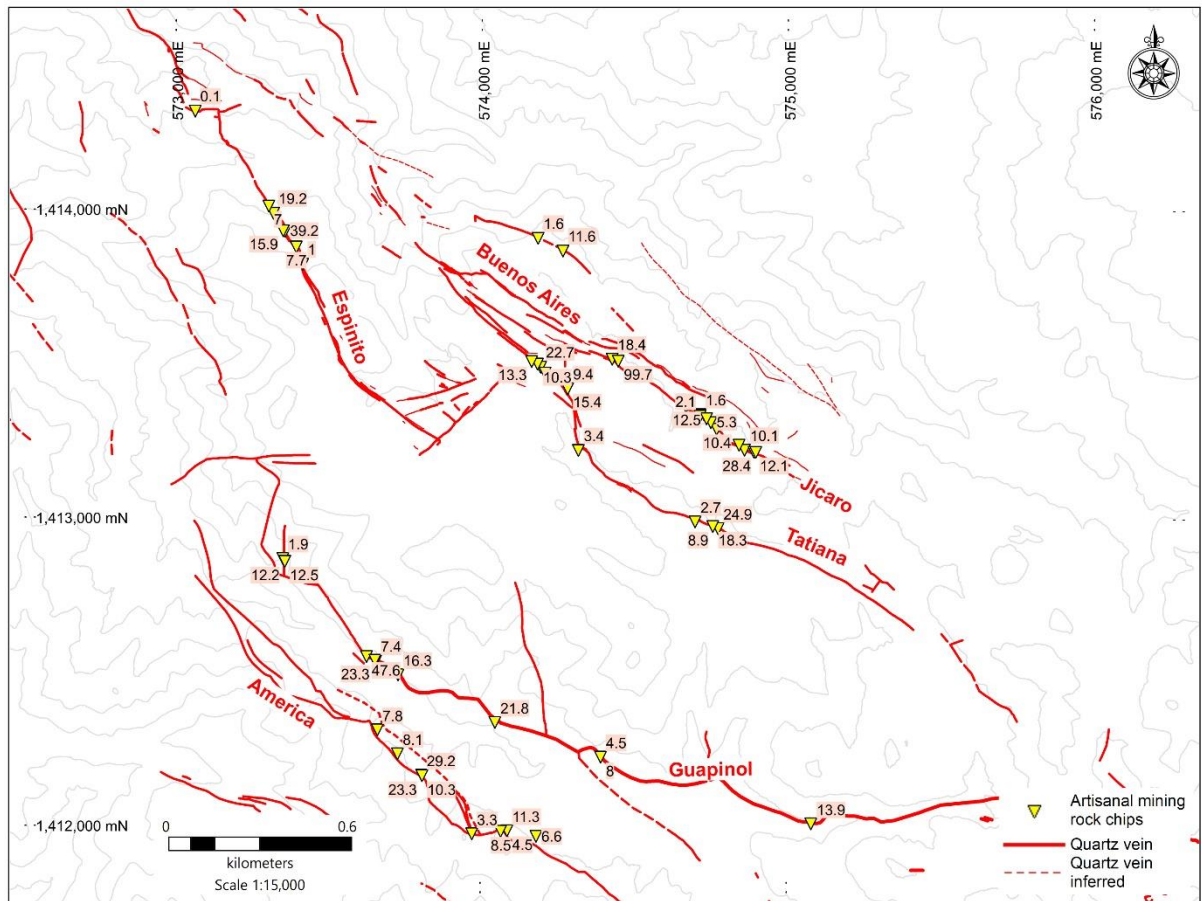
Figure 1. Map showing location of exploration areas: 1) La India, 2) America, 3) Mestiza, 4) Cacao, 5) Santa Barbara, 6) Andrea, 7) Andrea East, 8) El Derrumbado, 9) Tierra Blanca and 10) La Cuchilla. Veins shown in red.



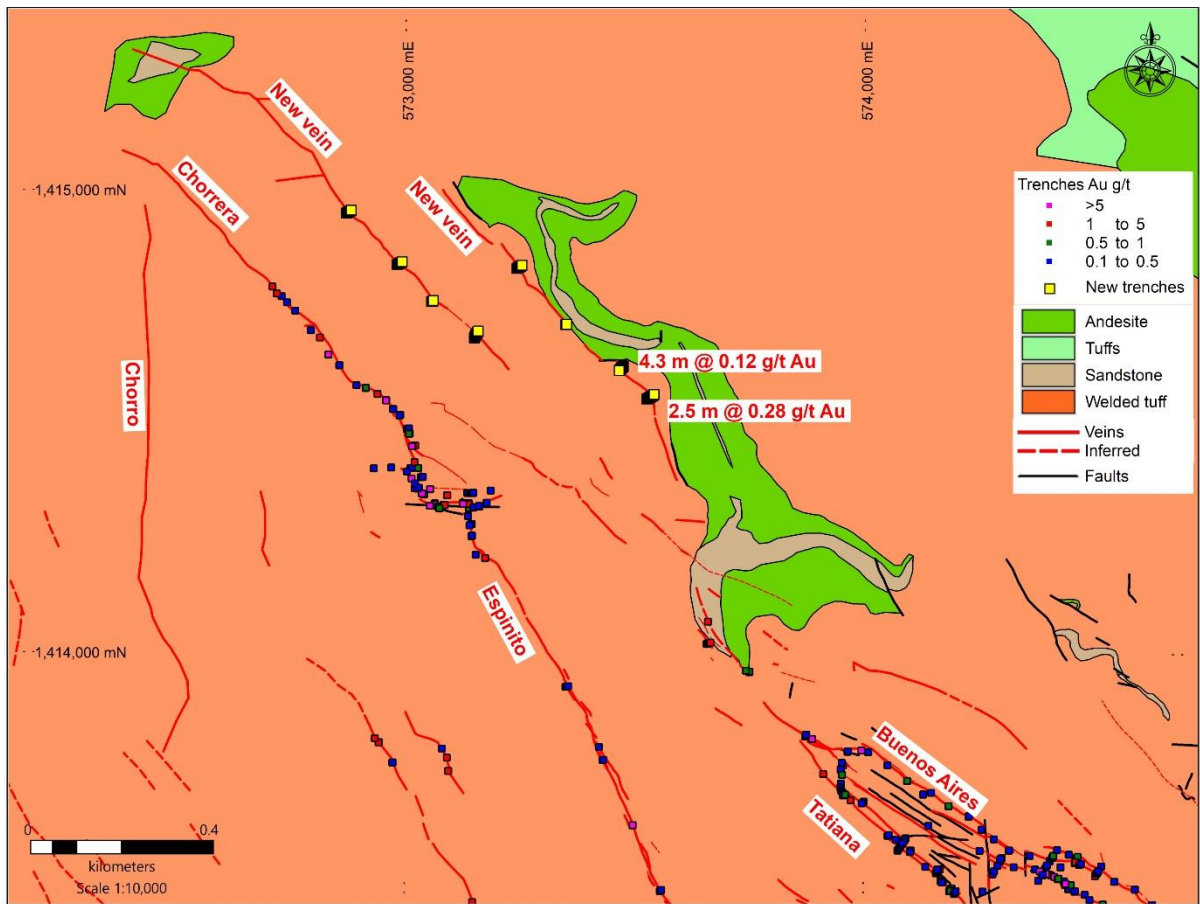
**Figure 2. Map of America valley veins with location of new surface samples (yellow triangles) and results.**



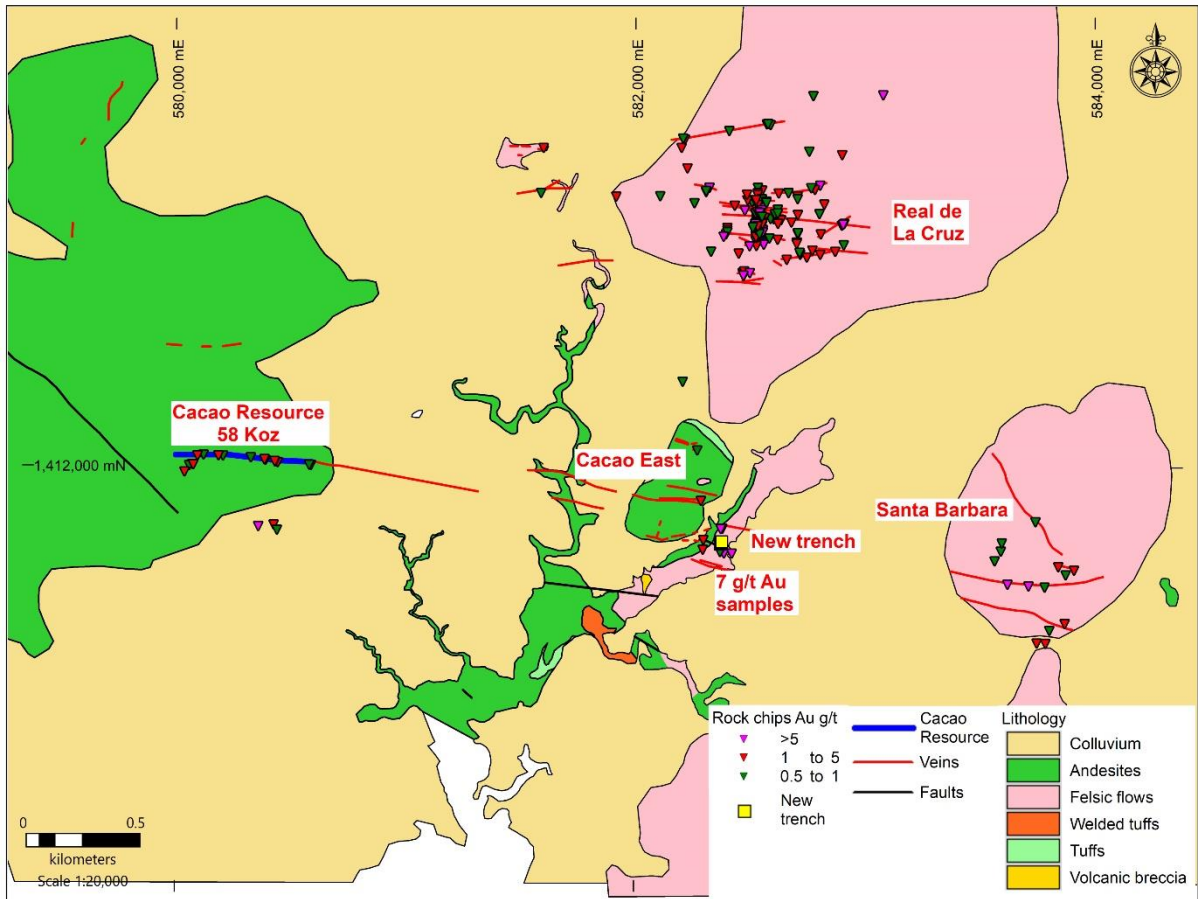
**Figure 3. Map of Mestiza and America veins with location of artisanal workings rock chip samples (yellow triangles) and results.**



**Figure 4. Map of Mestiza area with location of new trenches (yellow squares) and newly mapped veins.**



**Figure 5. Map of Cacao East and Santa Barbara drill targets with location of new trench (yellow squares) and historic rock chip samples.**



**Figure 6. Map of Andrea East and El Derrumbado prospects with location of new rock chip samples (yellow triangles) and results.**

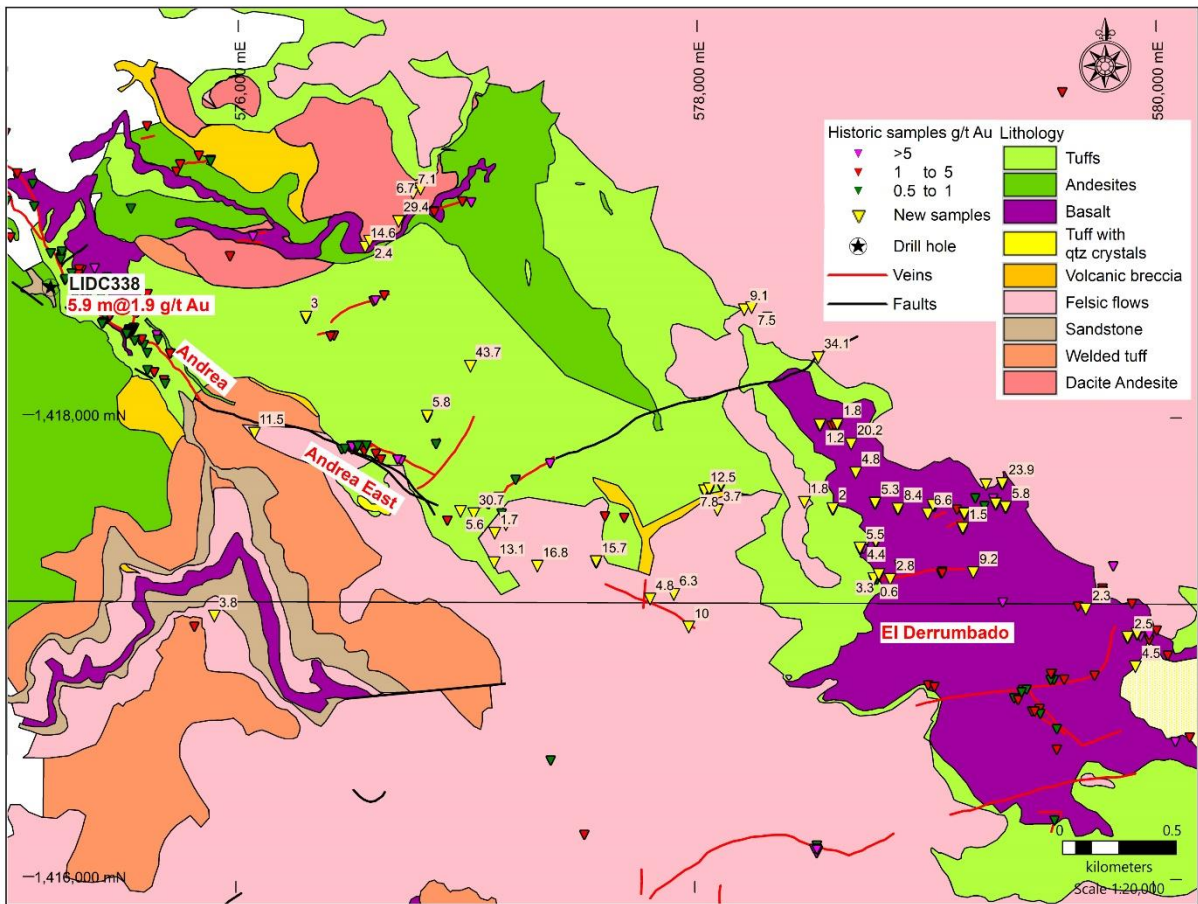
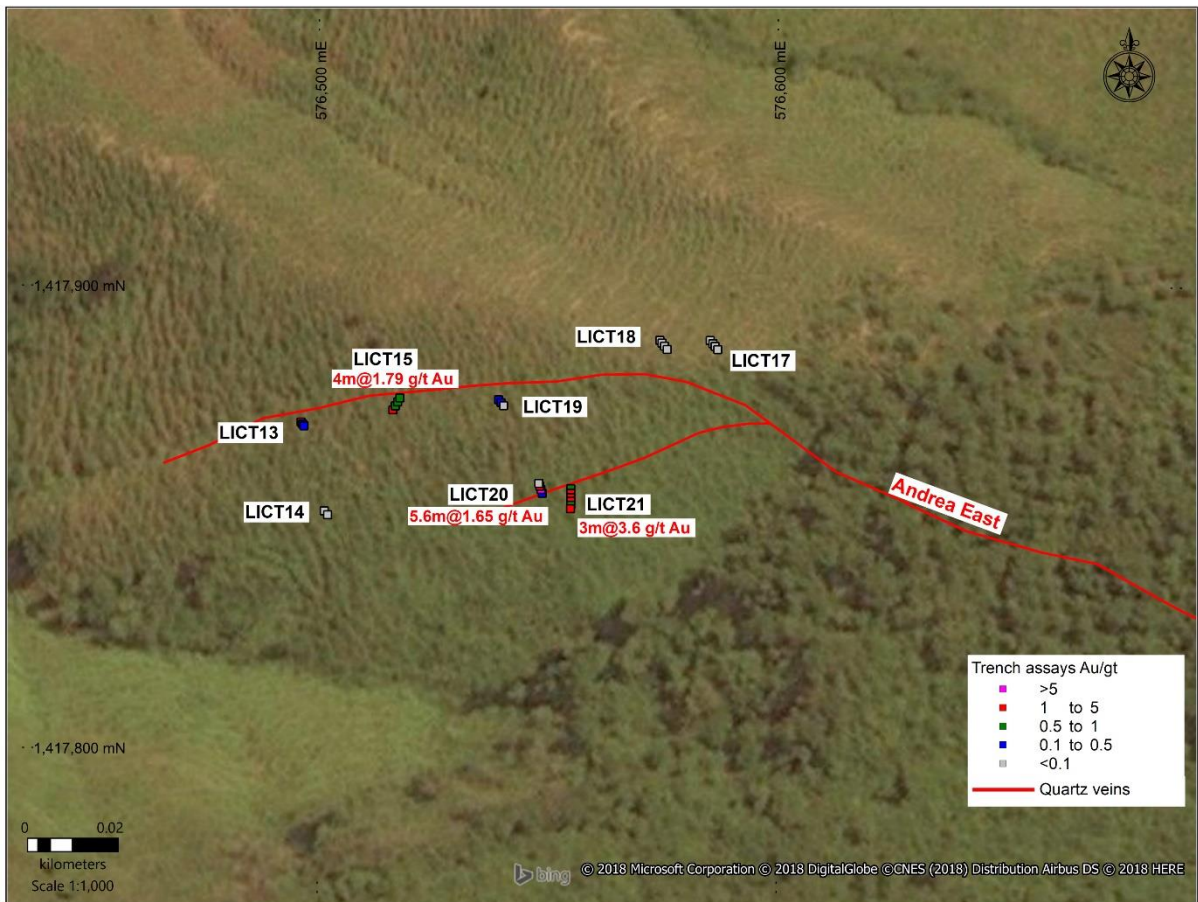
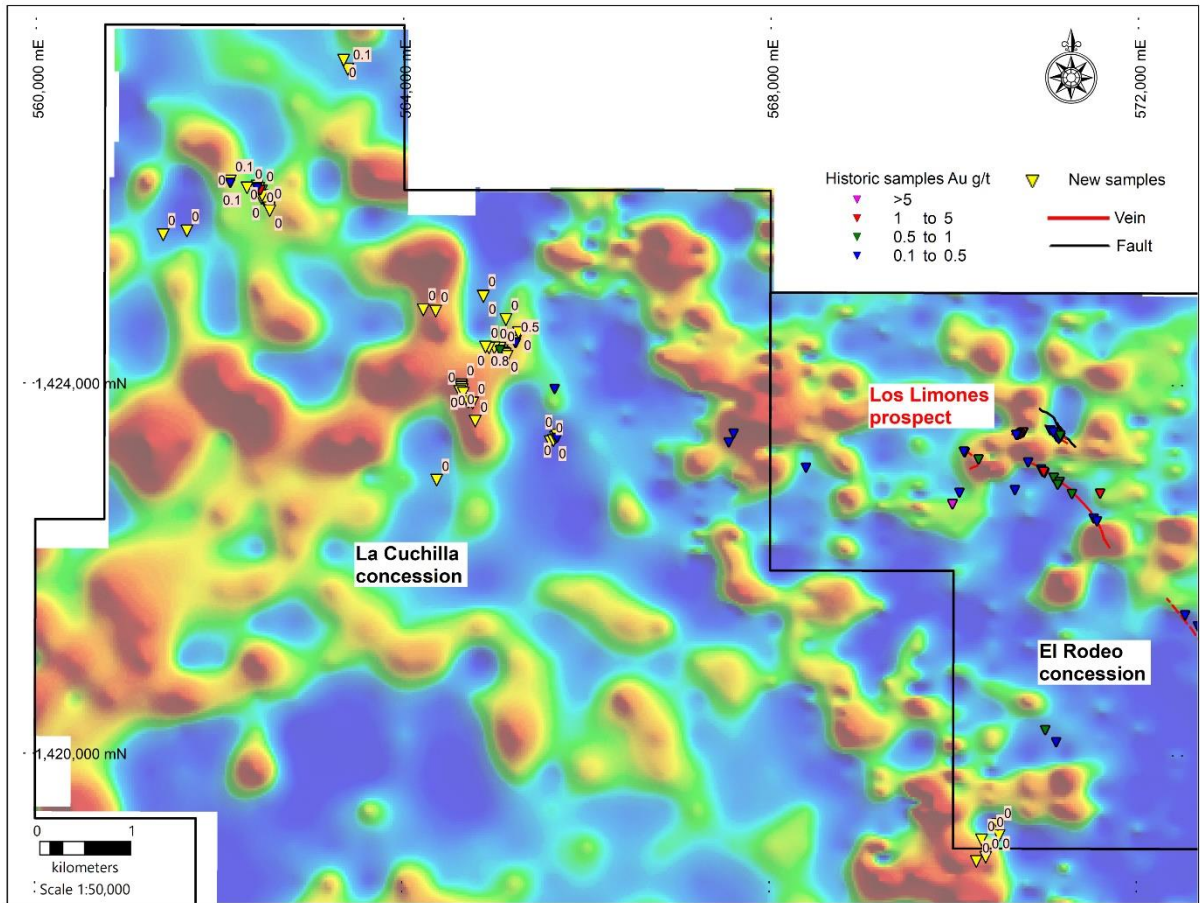


Figure 7. Map of Andrea East with location of new trenches (yellow squares) with results and historic rock chip samples.



**Figure 8. Map of the northern part of La Cuchilla concession with location of new samples (yellow triangles) with results and historic rock chip samples against a backdrop of arsenic (“As”) soil anomalies (reds are high As).**





**Figure 9. Location of rock chips with >0.1 g/t gold. Black arrow identifies new anomalous gold rock chips along a northwest striking trend in the northern part of La Cuchilla concession.**

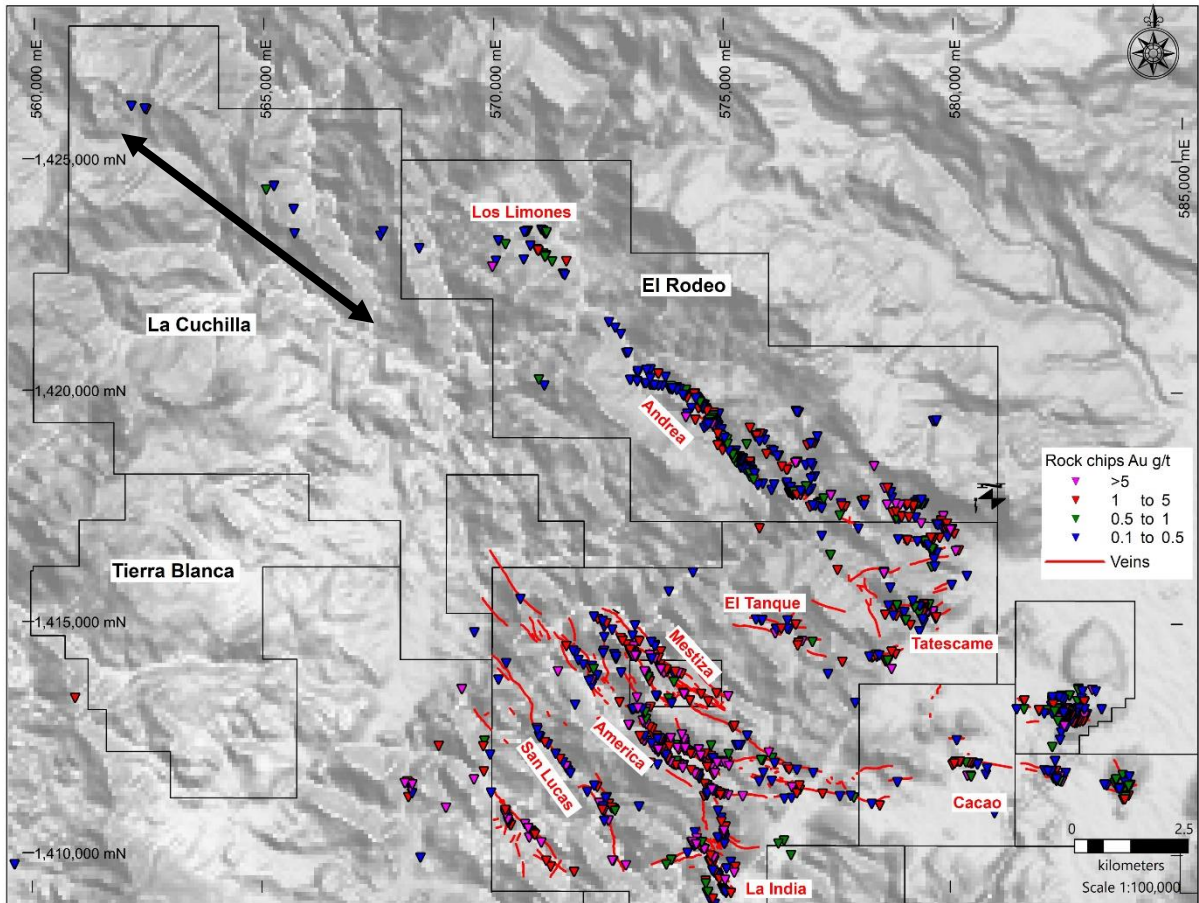


Figure 10. Map of Tierra Blanca concession with location of new samples (yellow triangles) with gold (“Au”) results and historic rock chip samples against a backdrop of arsenic (“As”) soil anomalies (reds are high As).

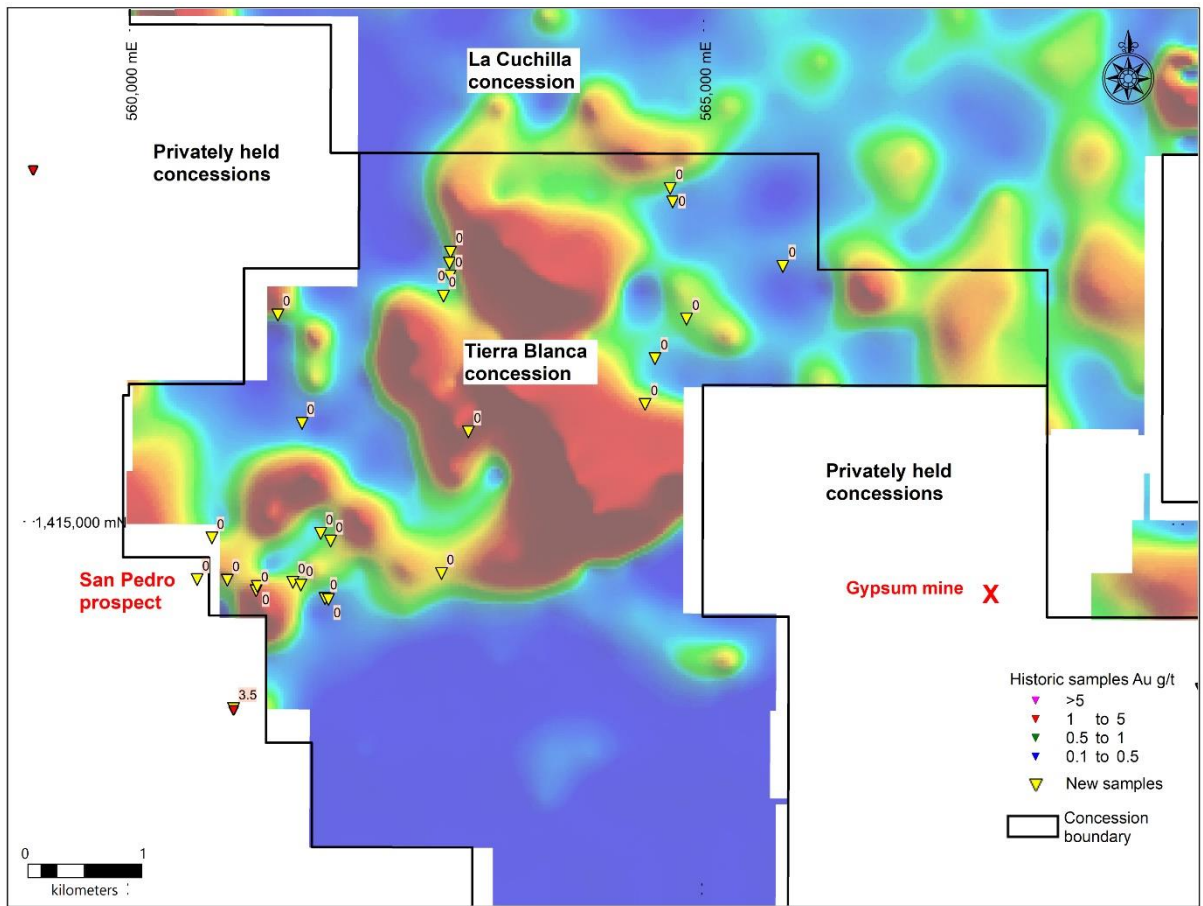


Figure 11. Location map of the sinters in the Tierra Blanca concession, with location of new samples (yellow triangles) with results for arsenic (ppm).

