

Condor Gold Plc

("Condor" or "the Company")

Interim Report and Accounts for the Three and Six Months Ended 30 June 2018

Figure 1. Screen capture of a long section of the La India vein from SE (left) to NW (right) showing wireframes of stratigraphic units and structures. La India vein (pink), base of andesites (green), top of XPDA (maroon), top of WTUF (brown), top of ATUF (cyan) and top of FELS (pink); red represents the Highway Fault.

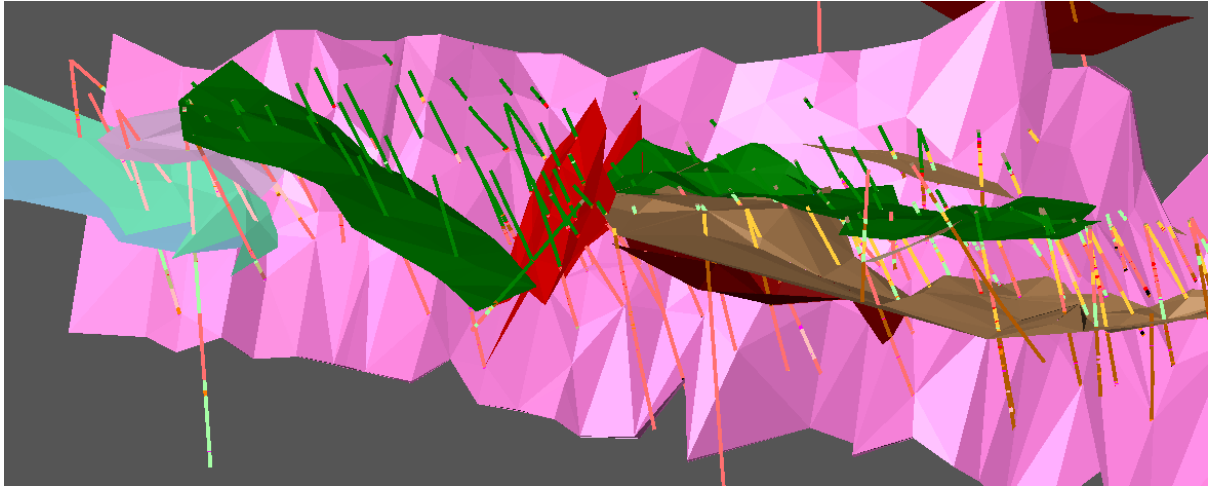


Figure 2. Screen capture of a plan view of La India vein from NW (left) to SE (right) showing model for the Highway Fault (in red). Red dots show tectonic breccias that clearly align themselves in areas of major faults. Black lines indicate potential faults that need to be modelled; fault breccias and stratigraphic offsets are apparent.

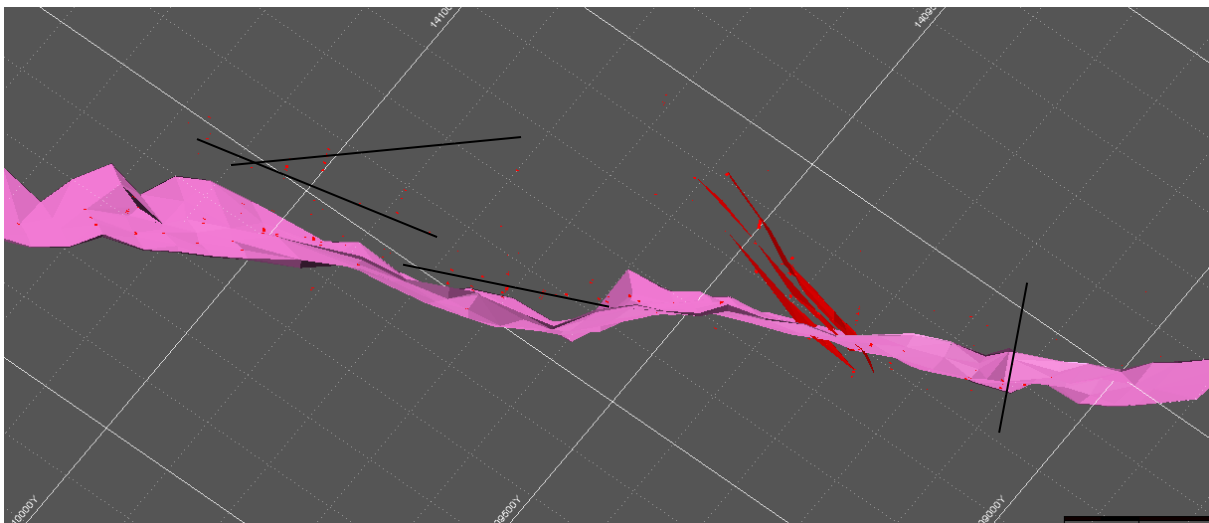


Figure 3. Screen capture of a long section view of La India vein from SE (left) to NW (right) showing potential fault (black line) displacing ATUF unit (cyan) to the west.

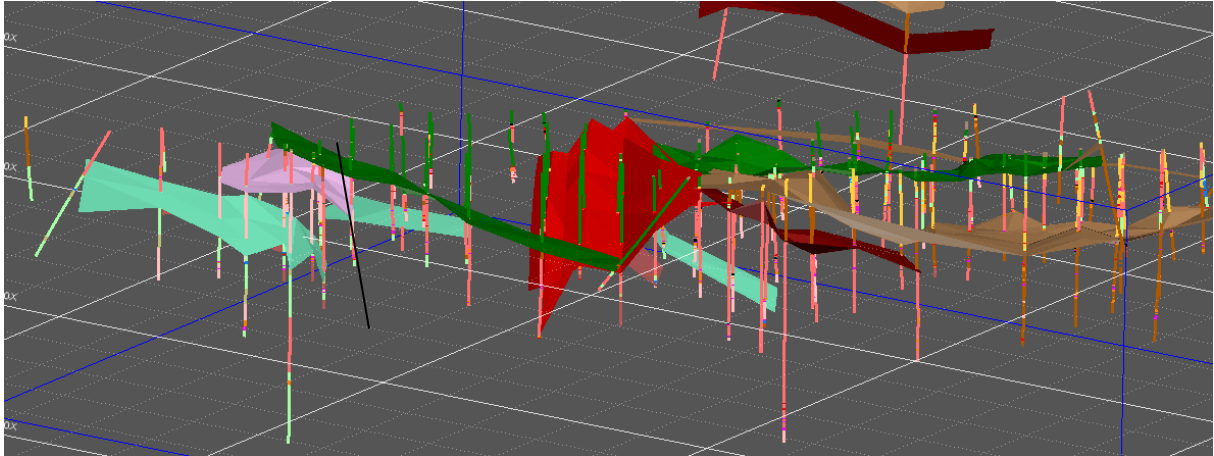


Figure 4. Screen capture of an oblique view up the America valley from SE (left) to NW (right) showing stratigraphic wireframes: base of andesite (green); base of volcanic breccia (gold) and base of welded tuff (brown). Veins are America (cyan), Constanica (pink), Escondido (lime green), Guapinol (grey) and Natalia (orange).

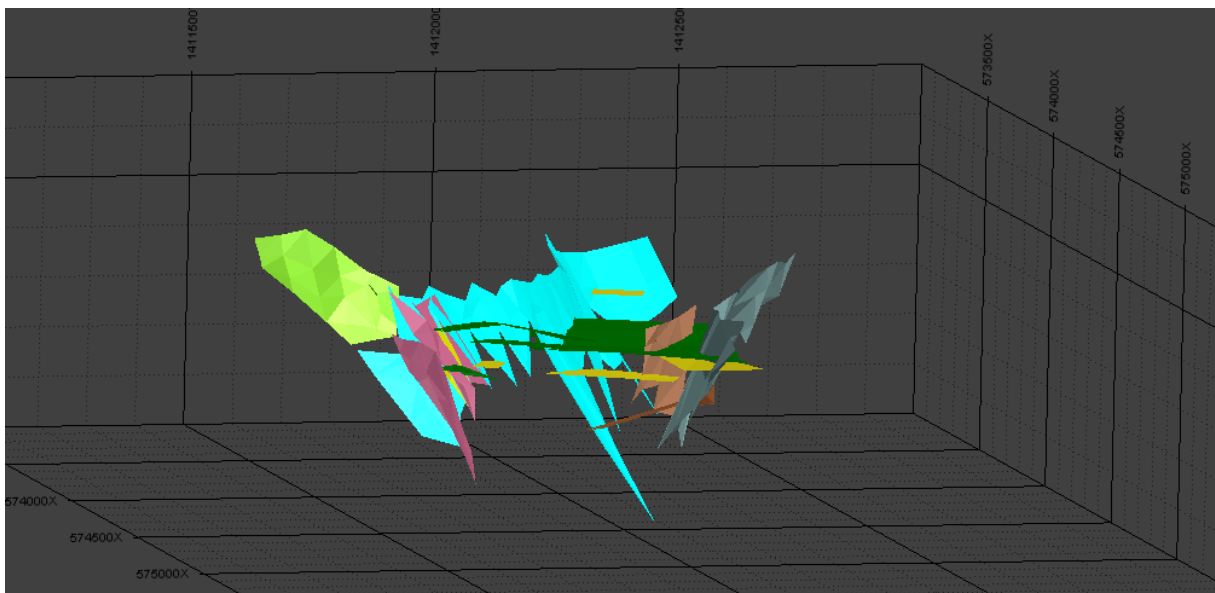


Figure 5. Channel sample results from Andrea East, El Rodeo concession.

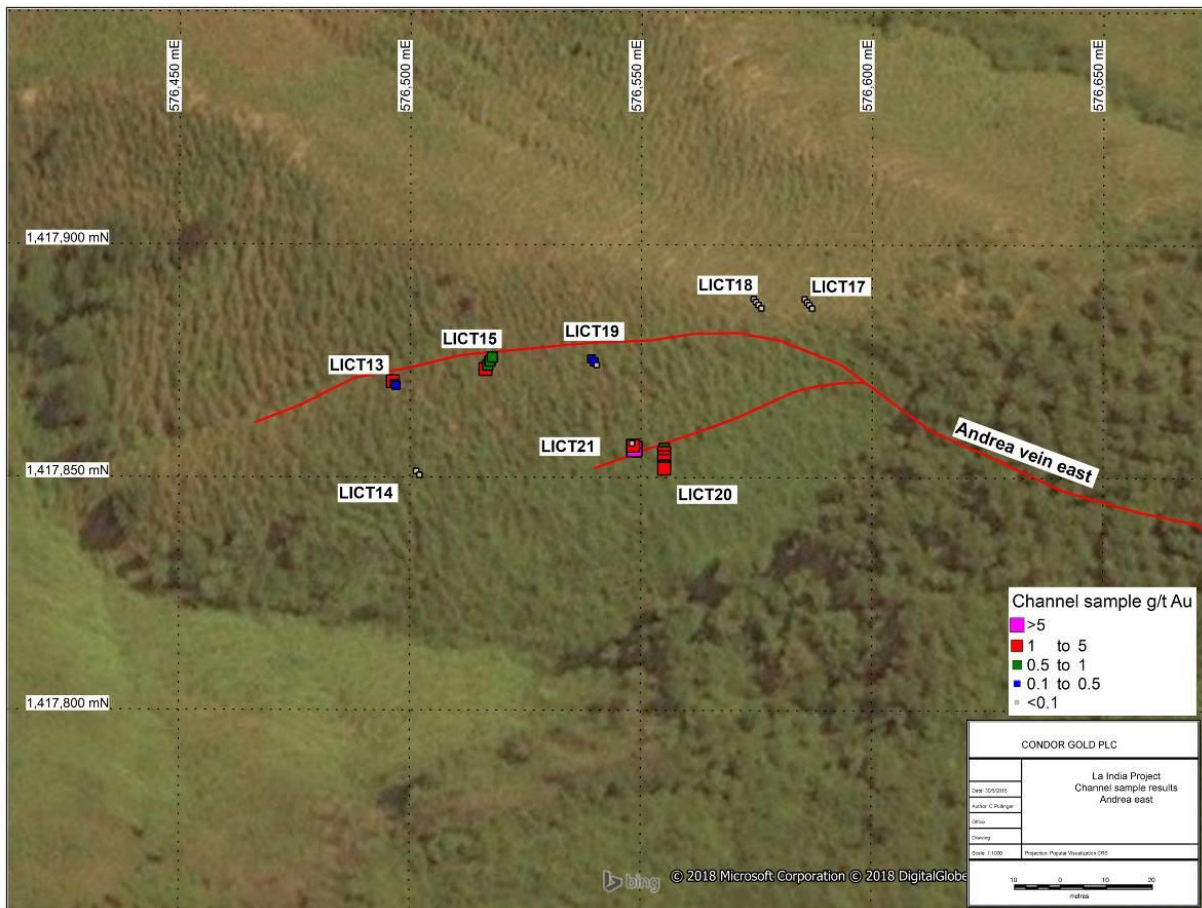


Figure 6. Rock chip assay results above 0.1 g/t Au. Black arrow identifies new anomalous Au rock chips along a NW striking trend in the northern part of La Cuchilla concession.

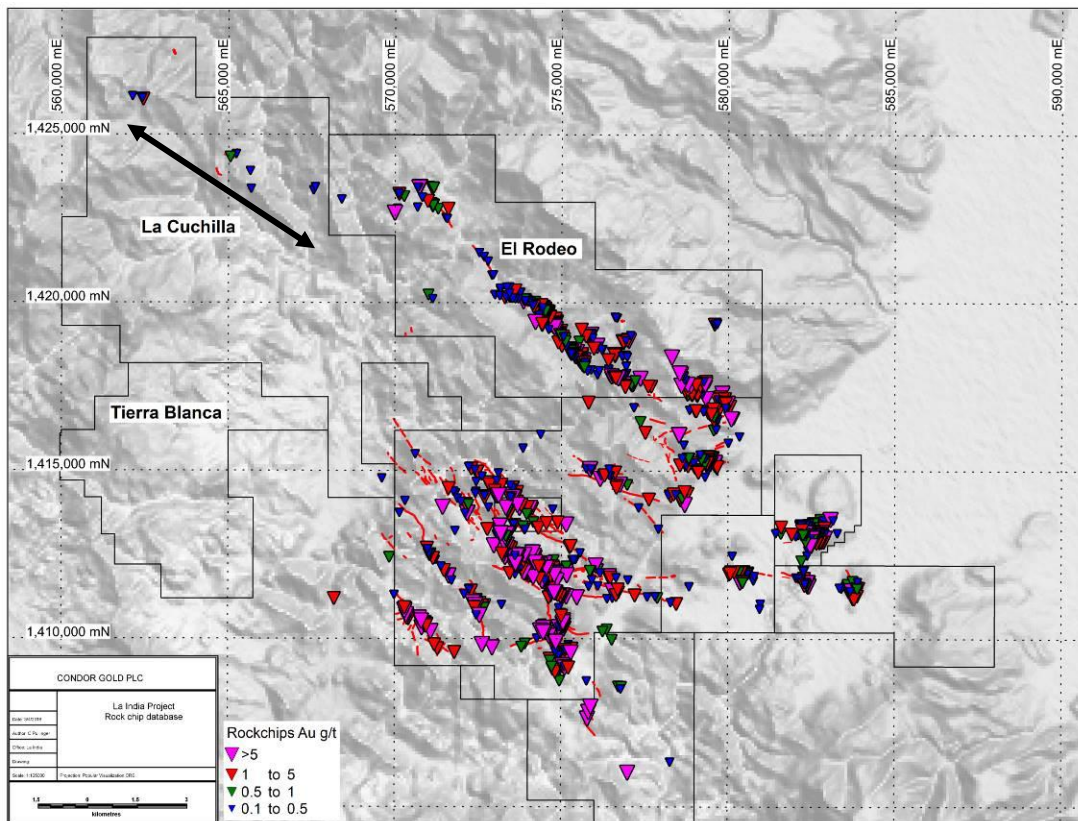


Figure 7. Location of silica sinter deposit in south Tierra Blanca concession.

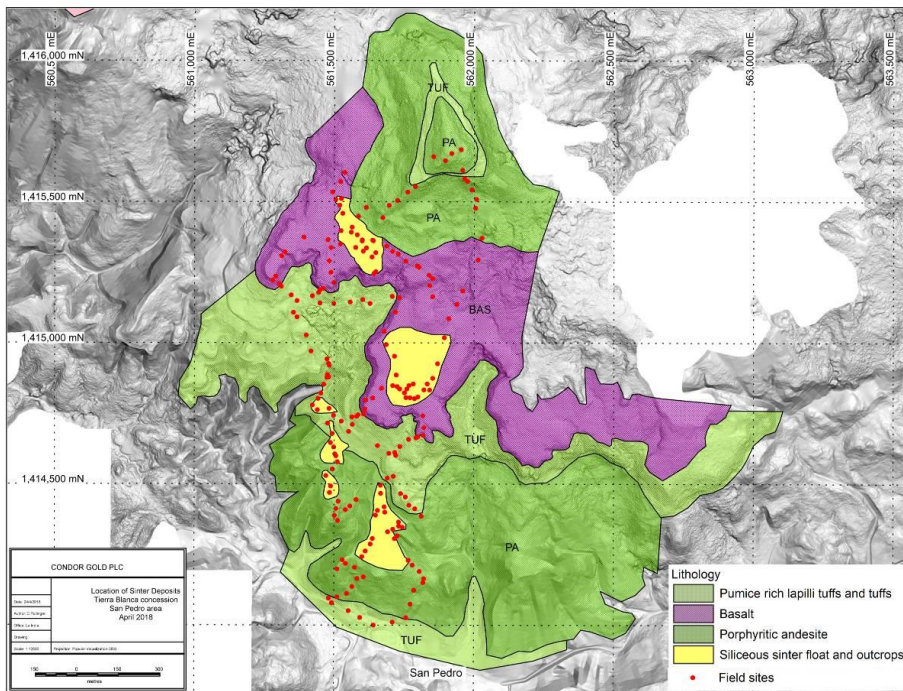


Figure 8. Concessions under application.

