



**ROCKFIRE**  
RESOURCES

**(LON:ROCK)**

Exploring for gold and copper in Australia

# Disclaimer

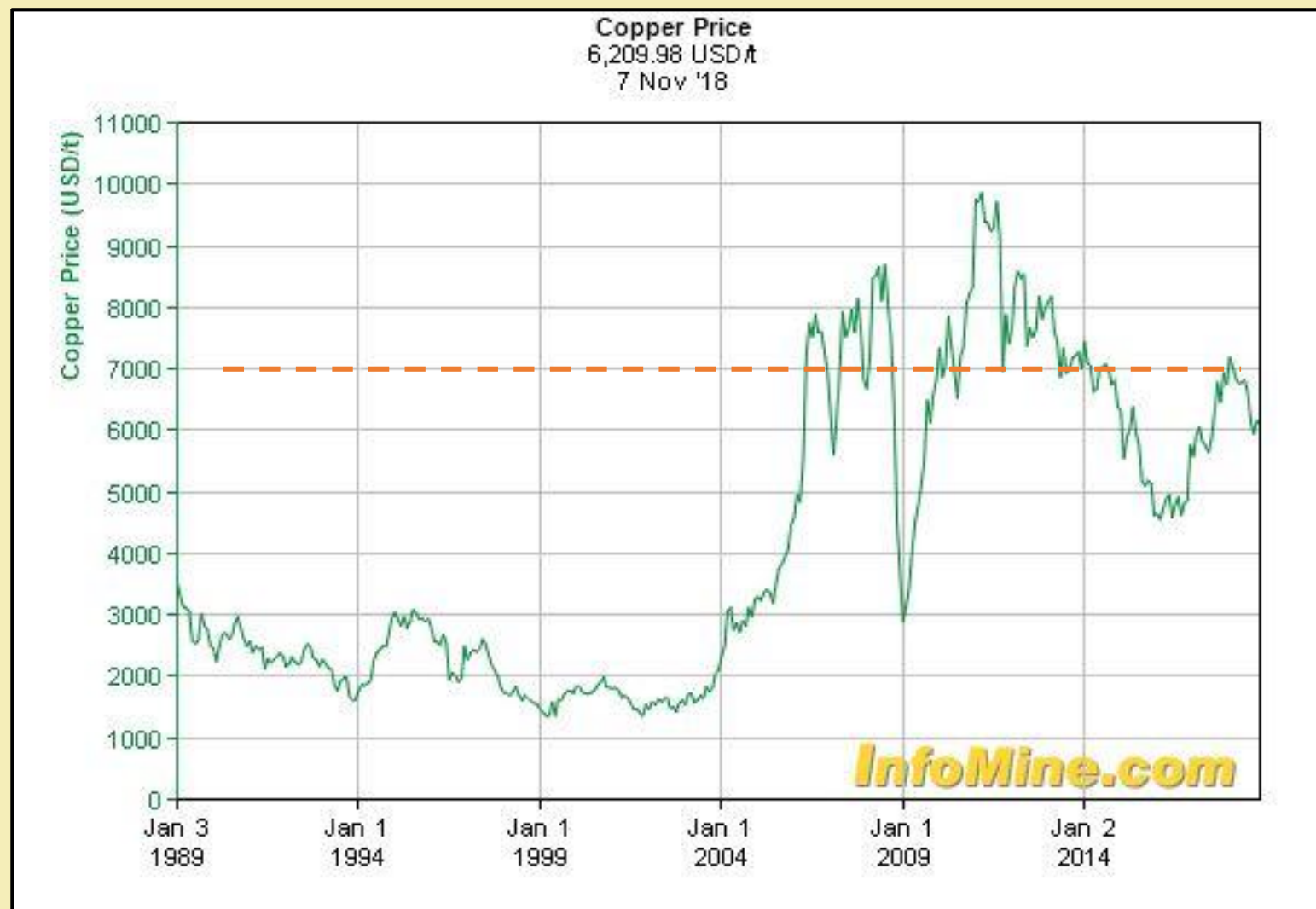
## Important Information

This presentation has been prepared by Rockfire Resources plc (**“ROCK”** or the “Company”). It should not be considered as an offer or invitation to subscribe for, or purchase any, securities in the Company or as an inducement to make an offer or invitation with respect to those securities. This presentation contains forecasts, projections and forward looking information. Such forecasts, projections and information are not a guarantee of future performance and involve unknown risks and uncertainties, many of which are out of ROCK’s control. Actual results and developments will almost certainly differ materially from those expressed or implied. ROCK has not audited or investigated the accuracy or completeness of the information, statements and opinions contained in this presentation. To the maximum extent permitted by applicable laws, ROCK makes no representation and can give no assurance, guarantee or warranty, express or implied, as to, and takes no responsibility and assumes no liability for (1) the authenticity, validity, accuracy, suitability or completeness of, or any errors in or omission from, any information, statement or opinion contained in this presentation and (2) without prejudice to the generality of the foregoing, the achievement or accuracy of any forecasts, projections or other forward looking information contained or referred to in this presentation. This overview of the Company does not purport to be all inclusive or to contain all information which its recipients may require in order to make an informed assessment of ROCK’s targeted prospects. You should conduct your own investigation and perform your own analysis in order to satisfy yourself as to the accuracy and completeness of the information, statements and opinions contained in this presentation before making any investment decision.

## Rockfire Resources – exploring amongst giants

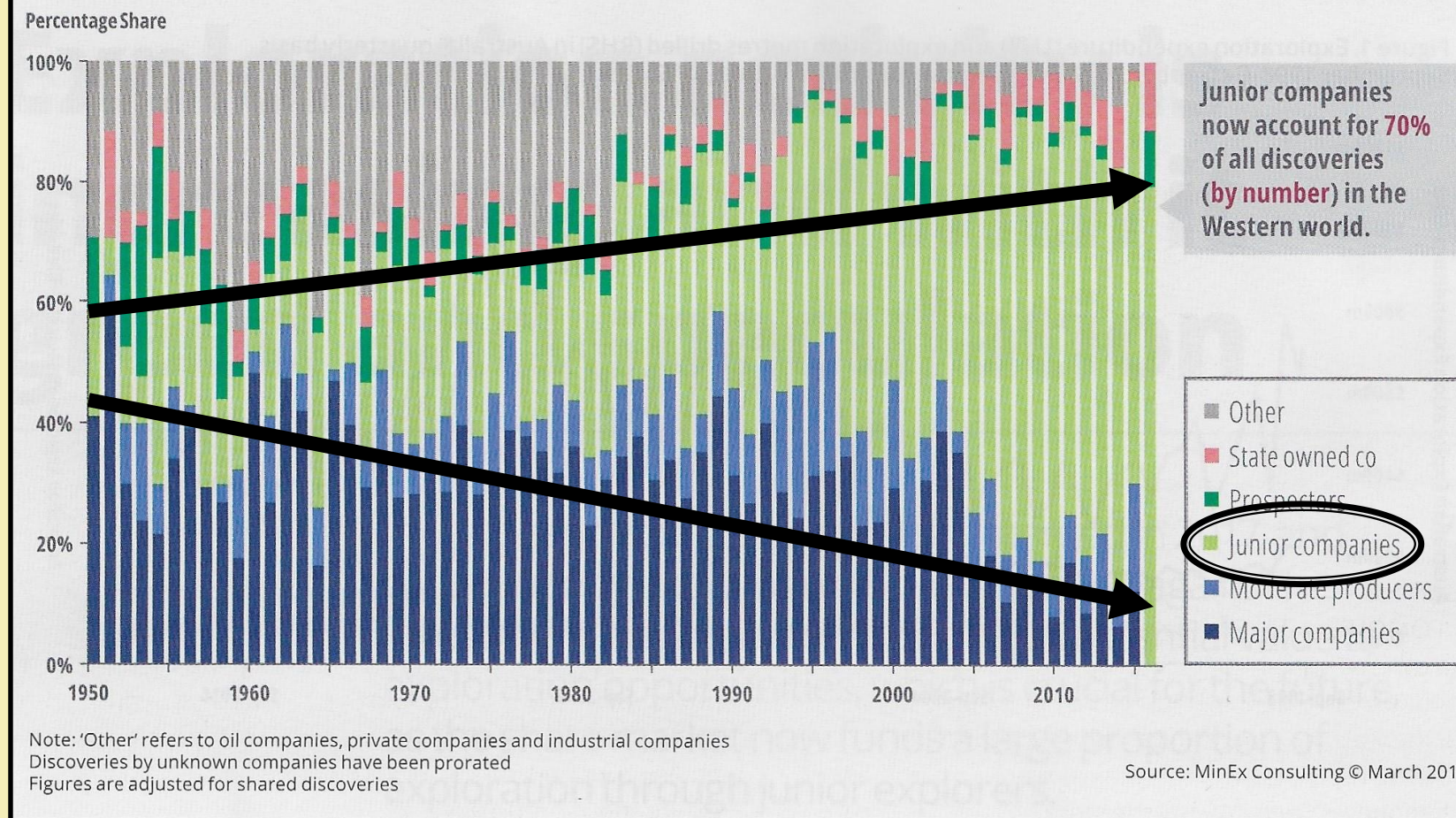
- ✓ A strategy of aggressive and determined exploration
- ✓ Exploring amongst multi-million-ounce deposits in Australia
- ✓ Focussed on large-scale projects, including porphyry copper deposits
- ✓ An experienced and successful board of directors
- ✓ Aiming to build a growth company, providing returns for investors
- ✓ Low market capitalisation and defined growth strategy
- ✓ A substantial and increasing portfolio of 100%-owned, highly prospective projects

## Rockfire Resources – historical copper price (30 years)



# Rockfire Resources – discovery trend favours juniors

Figure 2. Percentage share of discoveries, per year, according to size / nature of company.  
Chart is reproduced from Schodde (2017).



***Junior explorers are responsible for over 70% of all new mineral discoveries.***

# Rockfire Resources – company profile

## AIM Code: ROCK

Ordinary Shares (million)	373,342,293
Market Cap (£0.0115)	£4.30M

Shareholder	Shares (M)	%
Michael Somerset-Leeke	51,151,102	13.70
Nicholas Walley	41,179,655	11.03
Value Generation/P. & M. Johnson	29,850,977	8.00
Salida Capital (Europe) Limited	14,885,000	3.99
David W Price *	13,600,000	3.64
Edward Fry *	13,000,000	3.48
South Pacific Mining Holdings Limited	11,384,621	3.05
* denotes directors and management		46.89

## Directors & Management

Gordon Hart	Executive Chairman
David Price	Managing Director & CEO
Edward Fry	Exploration Manager

**Directors & Management hold 7.12% of ROCK**



# Rockfire Resources – board of directors and management

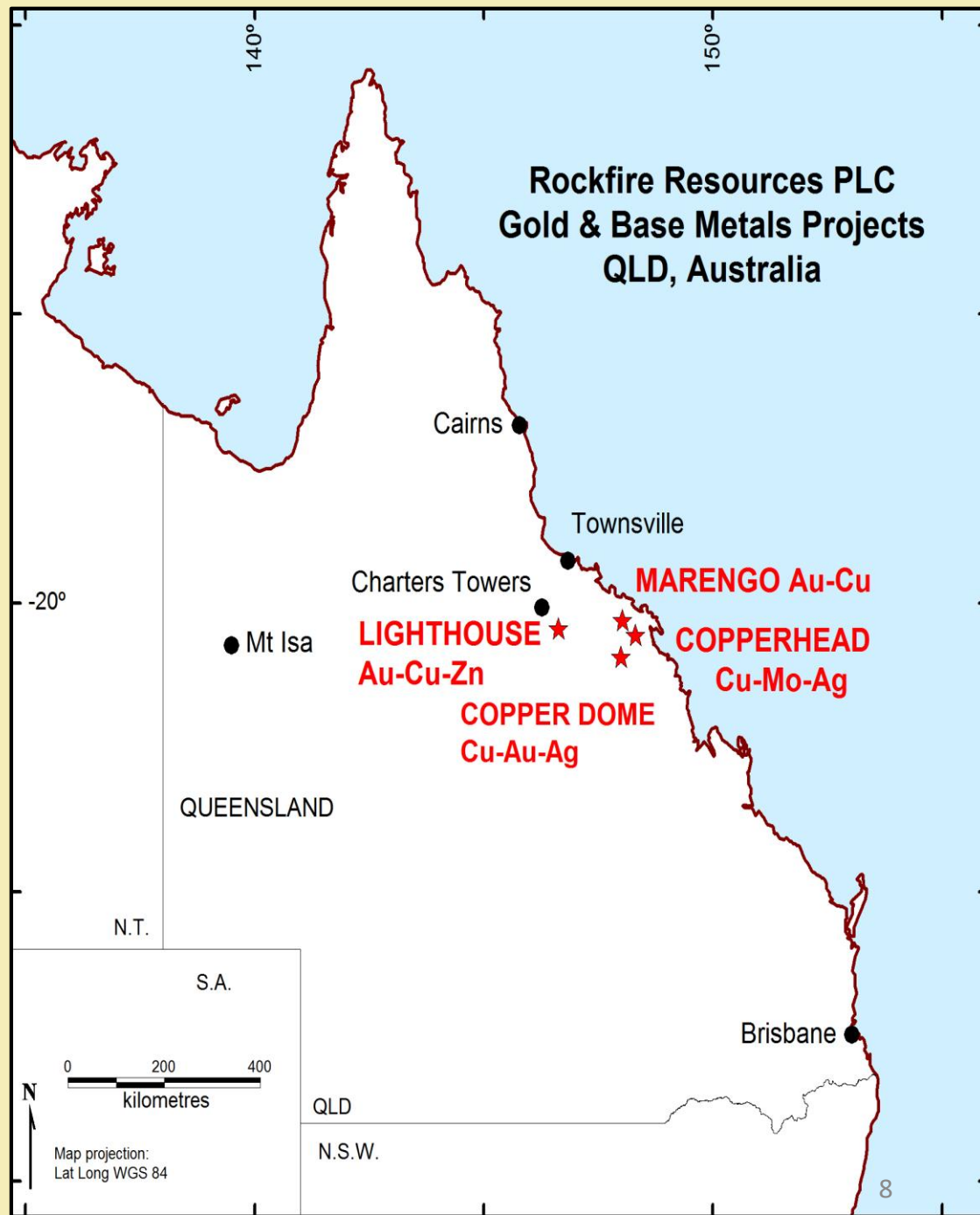
- Gordon Hart **Chairman**  
*Equities and Finance, (+35 years experience)*  
*Graduate of Institute of Company Directors*  
Venture Group Equities, GB Energy,  
Convergent Minerals, Information
- David Price **Managing Director and CEO (FAusIMM)**  
*Geologist, (30 years experience)*  
Australia, PNG, Fiji, China, Greece, Austria  
Convergent Minerals, Golden Tiger Mining, Danae  
Resources, Hargraves Resources, Placer Pacific
- Edward Fry **Exploration Manager (MAusIMM)**  
*Geologist, (10 years experience)*  
Australia, Papua New Guinea, China  
Mill Resources, Artemis Resources, BGM  
Investments, Kings Minerals, Convergent  
Minerals, Legend International, Golden Tiger  
Mining,



# Australia

- **'Lighthouse'**  
Breccia-hosted Au/Cu +/- Ag
- **'Marengo'**  
Epithermal Au/Cu, IRGS
- **'Copperhead'**  
Porphyry Cu
- **'Copper Dome'**  
Porphyry Cu

**ROCKFIRE**







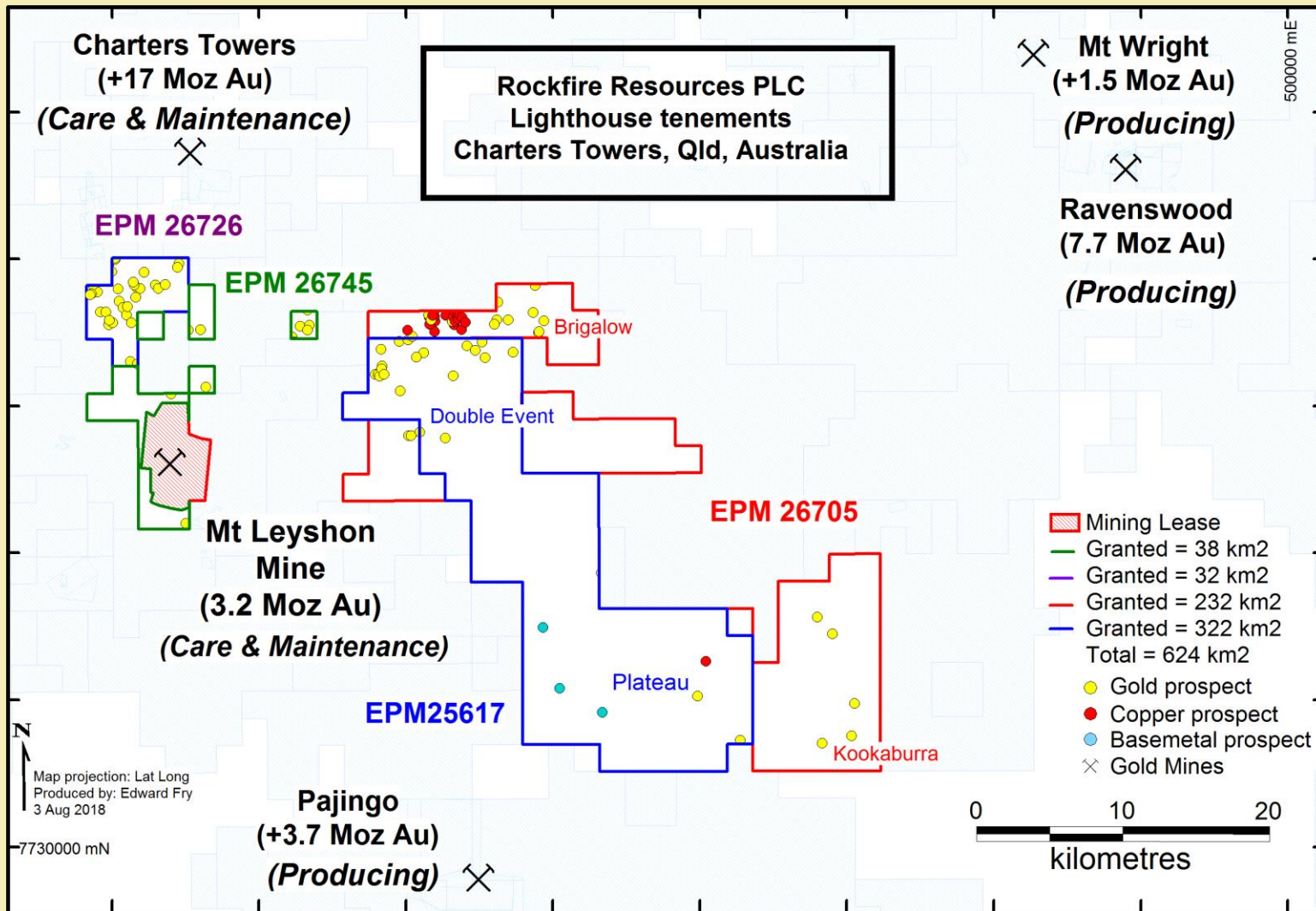
# Lighthouse

Queensland, Australia

636 sq. km.

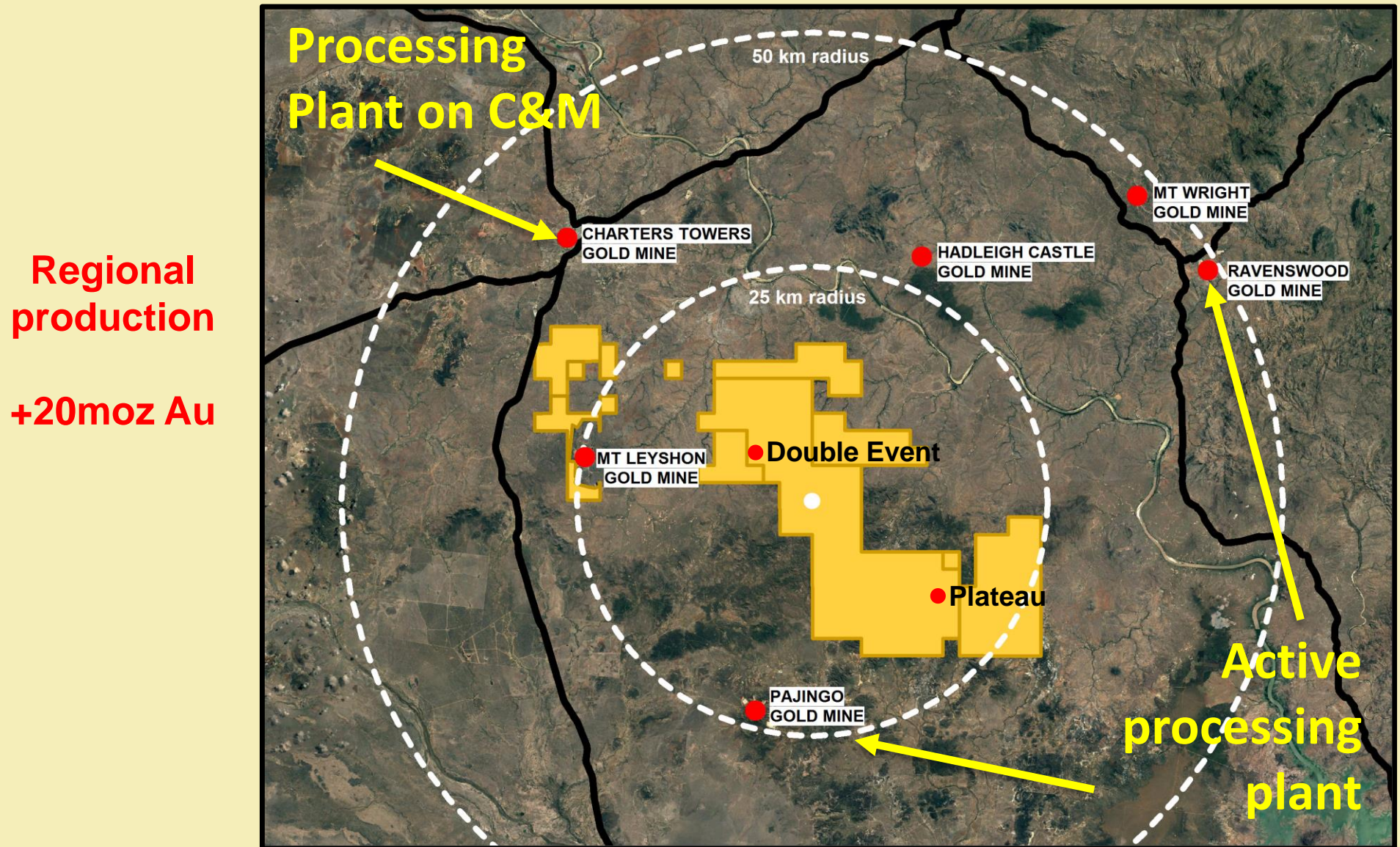
Multiple breccia, epithermal and  
vein-hosted mineralising systems

# Lighthouse STRATEGIC LAND ACCUMULATION





## Lighthouse STRATEGIC LAND ACCUMULATION



## PLATEAU PROSPECT - Open pit mine potential

### December 2017 drilling:

- 22m @ 1.9 g/t Au + 22.3 g/t Ag  
**(39m downhole)**
- 20m @ 0.5 g/t Au + 2.5 g/t Ag  
**(16m downhole)**
- 10m @ 1.9 g/t Au + 9.0 g/t Ag  
**(18m downhole)**
- 18m @ 1.0 g/t Au + 10.5 g/t Ag  
**(119m downhole)**

RC DRILLING DECEMBER 2017

ROCKFIRE

### Historical drilling:

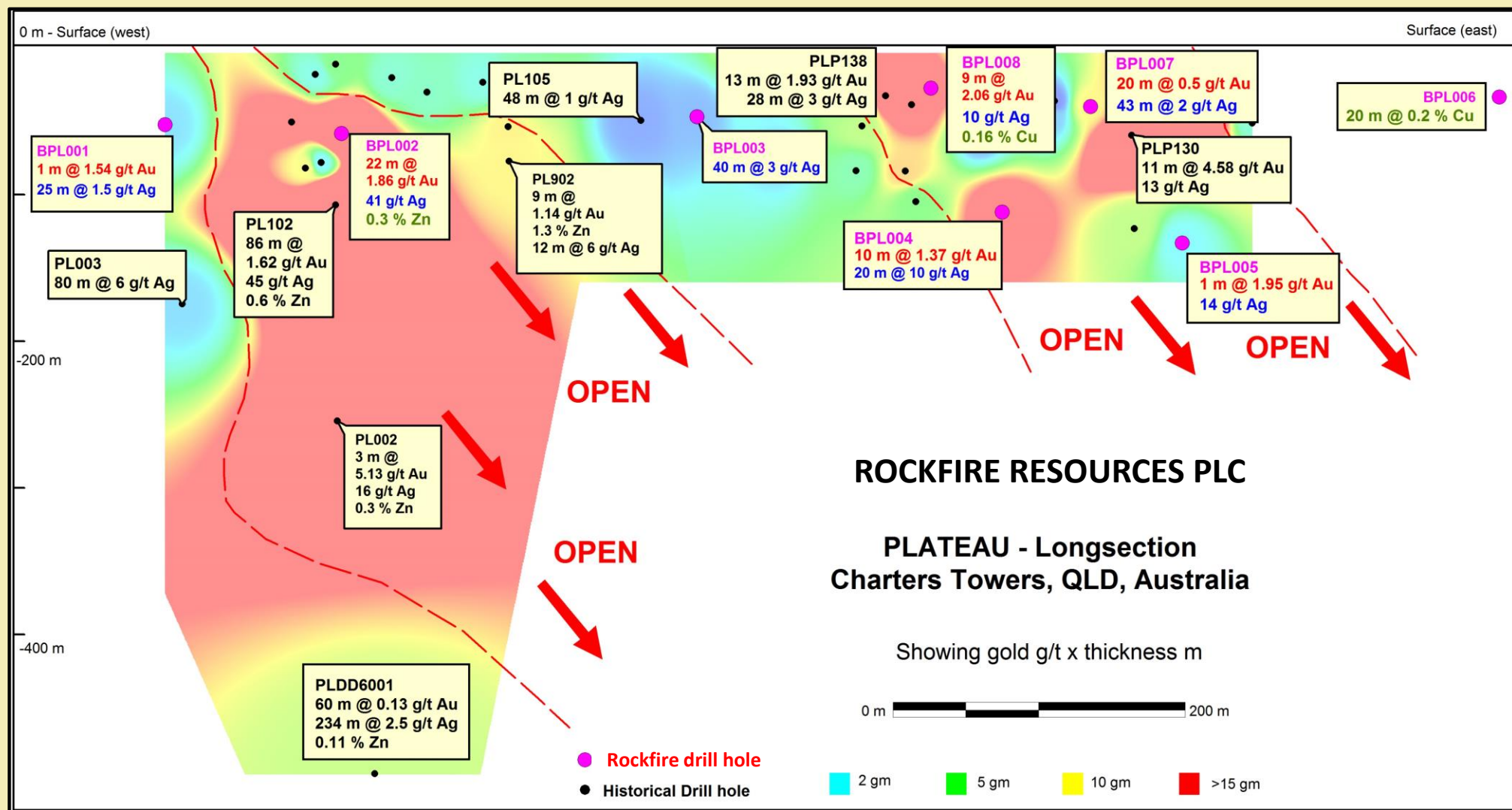
- 44m @ 2.4 g/t Au
- 10m @ 5.0 g/t Au
- 8m @ 3.0 g/t Au
- 14m @ 2.4 g/t Au
- 3m @ 4.9 g/t Au



2m @ 1.1g/t Au from 645m downhole



# PLATEAU PROSPECT – open at depth



## DOUBLE EVENT PROSPECT – 4.5 kilometres long

- Gold assays include; 37.7 g/t, 33.3 g/t, 33.1 g/t, 25.9 g/t, 24.3 g/t, 23.5 g/t
- Silver assays include; 56.8 g/t, 54.0 g/t, 52.7 g/t, 46.7 g/t, 38.7 g/t and 37.1 g/t
- Lead assays include; 4.46%, 3.64% and 3.29% Pb
- The average of all rock samples collected is 8.45 g/t Au.
- A quarter of all samples (25%) returned gold in excess of 10 g/t Au.

### ROCK SAMPLING FEB 2018

Rockfire Resources plc				
Lighthouse Project, Double Event Prospect				
Rock sampling February 2018				
Sample Number	Au ppm	Ag ppm	Pb ppm	Pb %
BDERS001	19.15	52.70	13,750	1.38
BDERS005	7.85	14.55	4,570	0.46
BDERS008	21.50	23.90	18,500	1.85
BDERS014	13.80	24.30	12,300	1.23
BDERS017	6.25	12.05	1,035	0.10
BDERS018	37.70	46.70	18,250	1.83
BDERS021	21.90	26.10	8,940	0.89
BDERS022	33.30	32.20	17,150	1.72
BDERS023	7.11	19.40	4,260	0.43
BDERS027	9.41	17.45	7,030	0.70
BDERS029	5.55	6.65	2,450	0.25
BDERS030	15.80	7.70	6,700	0.67
BDERS033	3.62	29.10	209	0.02
BDERS036	3.08	2.49	2,490	0.25
BDERS037	33.10	13.95	3,910	0.39
BDERS038	7.54	9.21	15,650	1.57
BDERS039	7.22	12.85	2,160	0.22
BDERS041	23.10	56.80	44,600	4.46
BDERS042	24.30	17.20	16,000	1.60
BDERS045	8.77	37.10	32,900	3.29
BDERS048	25.90	38.70	36,400	3.64
BDERS049	23.50	17.30	1,480	0.15



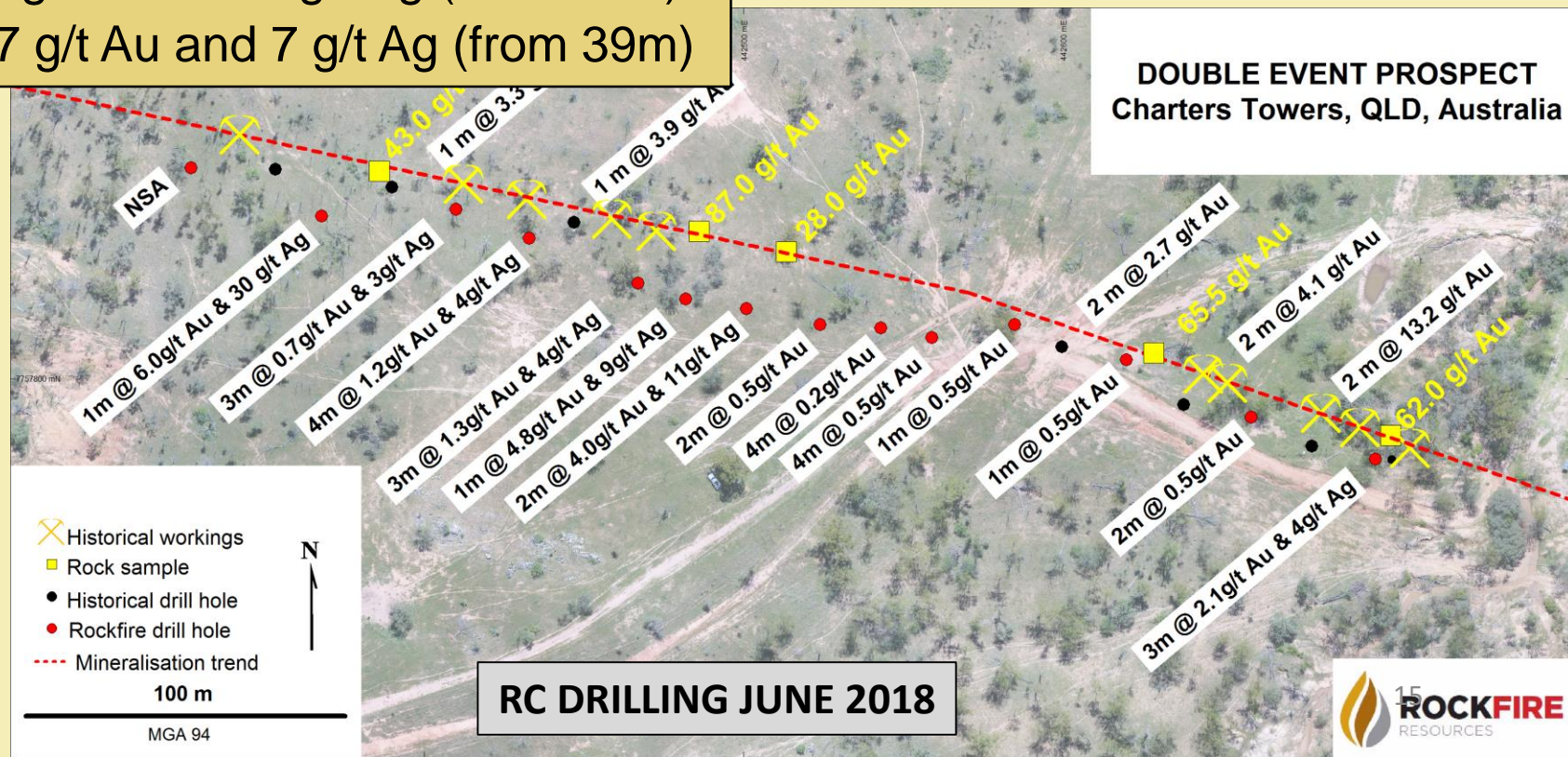
## DOUBLE EVENT PROSPECT – Eastern section

### June 2018 drilling:

- 3m @ 2.1 g/t Au and 4 g/t Ag (from 23m)
- 4m @ 1.2 g/t Au and 4 g/t Ag (from 24m)
- 1m @ 6.0 g/t Au and 30 g/t Ag (from 25m)
- 3m @ 1.3g/t Au and 4 g/t Ag (from 10m)
- 2m @ 2.5g/t Au and 5 g/t Ag (from 41m)
- 3m @ 2.7 g/t Au and 7 g/t Ag (from 39m)

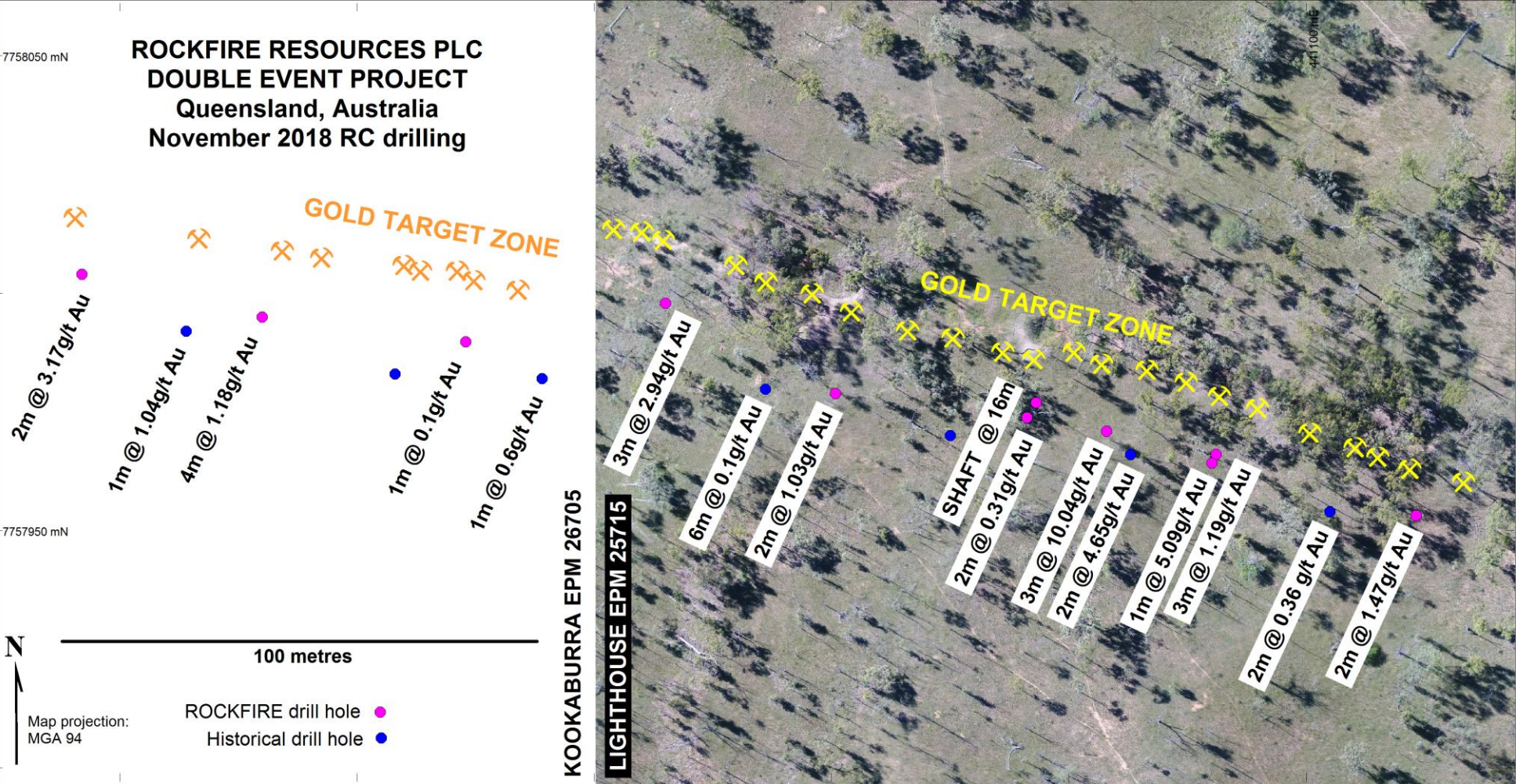
### Battle Mountain drill results 1987

- 2m @ 13.2 g/t Au
- 4m @ 4.65 g/t Au
- 1m @ 3.93 g/t Au
- 4m @ 2.87g/t Au
- 1m @ 3.25g/t Au
- 1m @ 2.94g/t Au
- 2m @ 2.7g/t Au





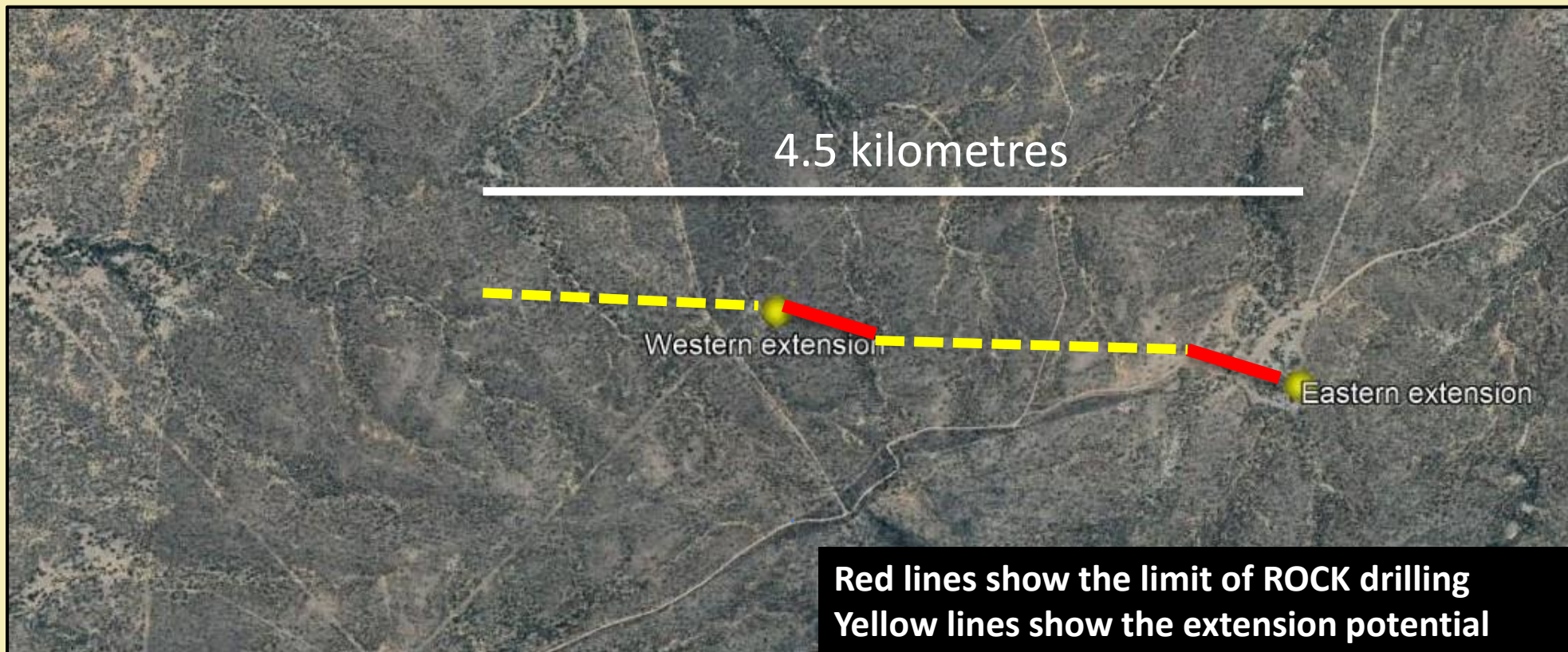
DOUBLE EVENT PROSPECT – Western section



RC DRILLING NOVEMBER 2018



## DOUBLE EVENT PROSPECT





# Marengo

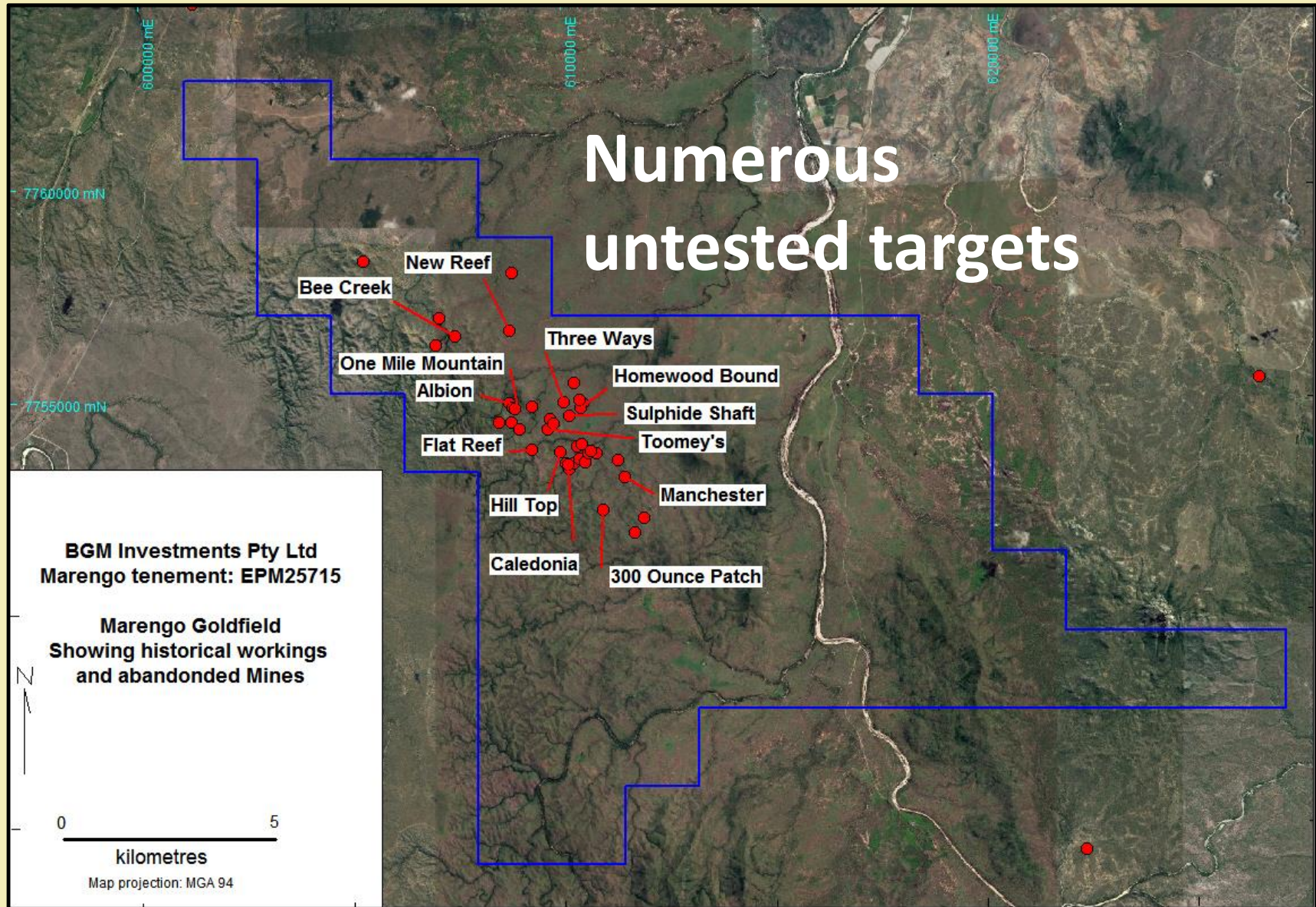
Queensland, Australia

180 sq. km.

Epithermal and Intrusion-  
related gold system (IRGS)



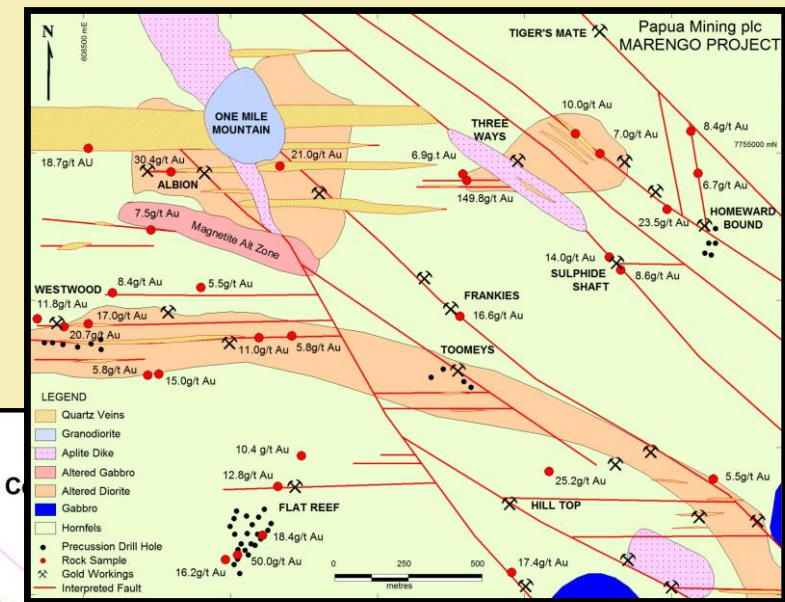
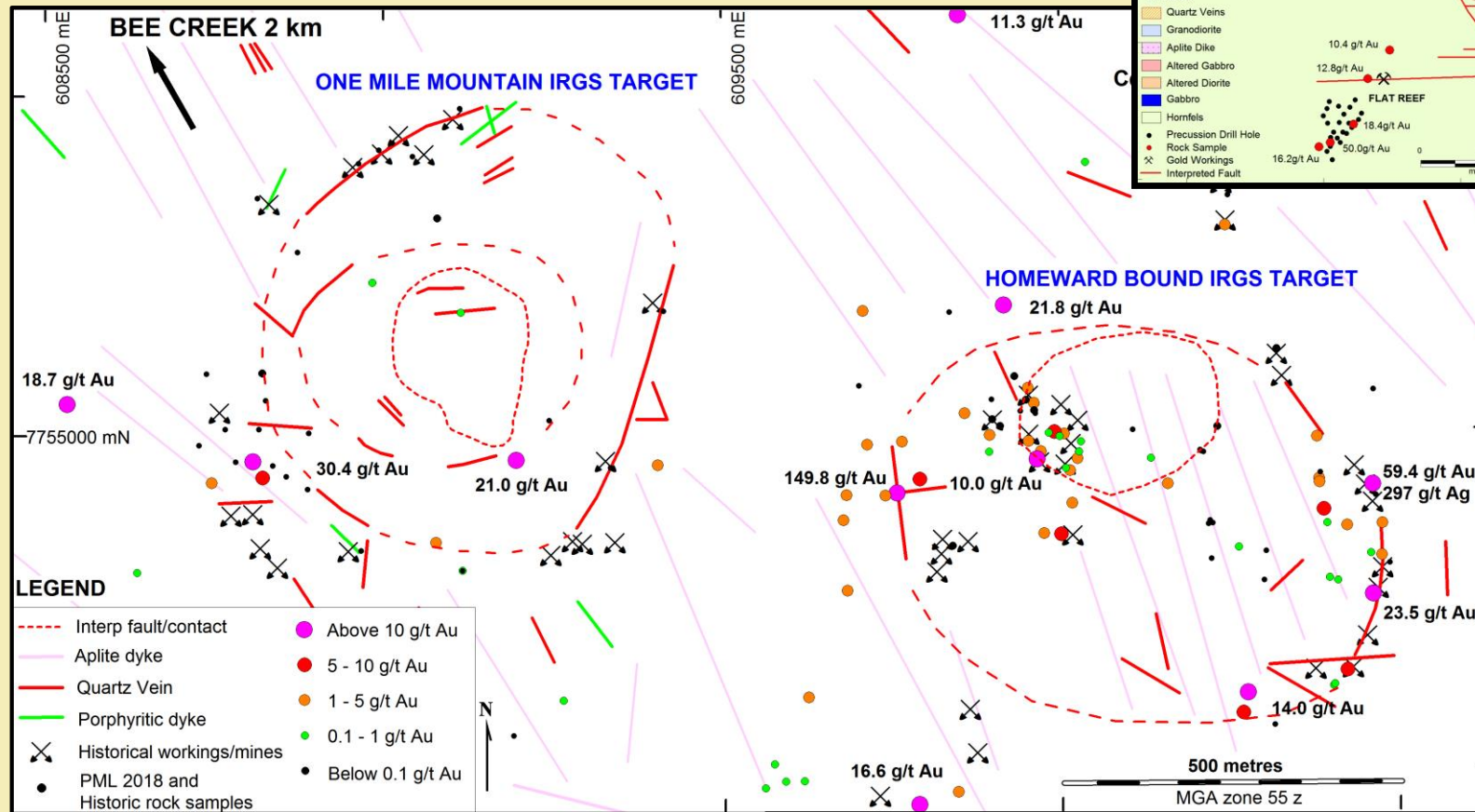
## Marengo A large, historical goldfield





# Marengo LARGE INTRUSIONS

- Historical rocks up to 149 g/t Au
- Faults, ring fractures, veining, sulphides and alteration





## Marengo HIGH GRADES AT SURFACE

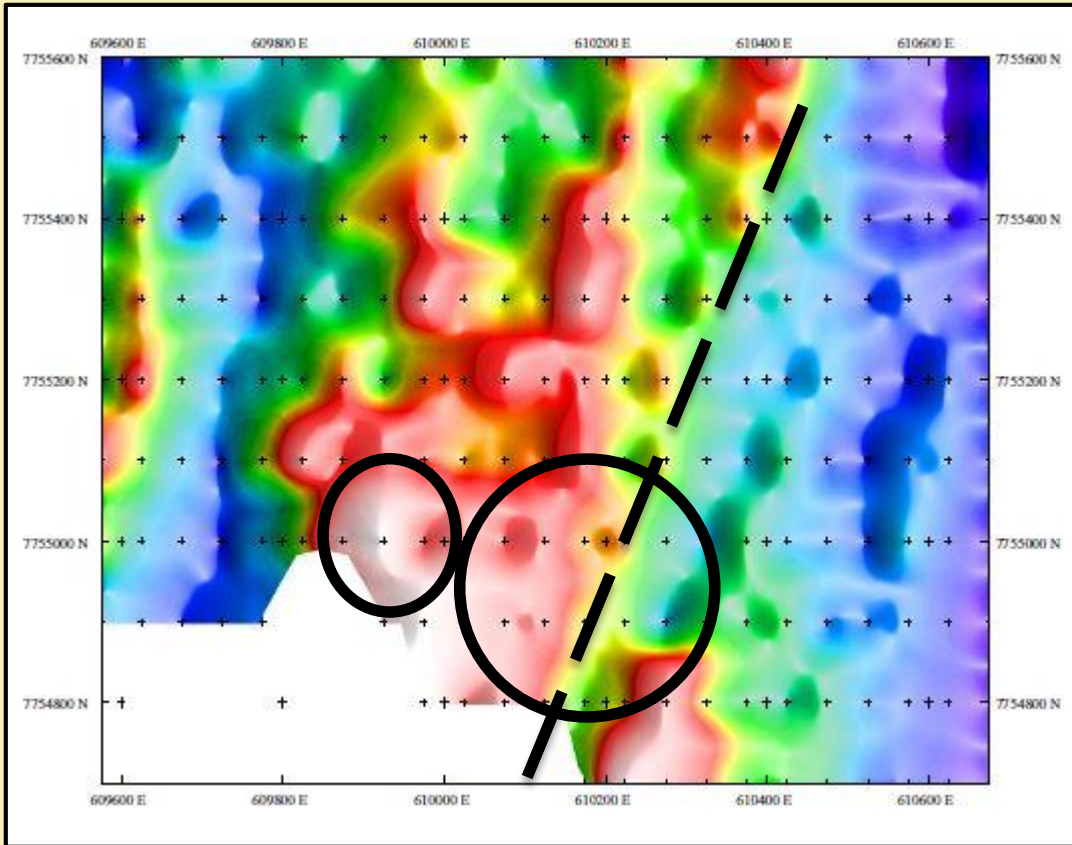


69 rock samples collected - maximum assays were 59.4 g/t Au, 17.7 % Cu and 342 g/t Ag;

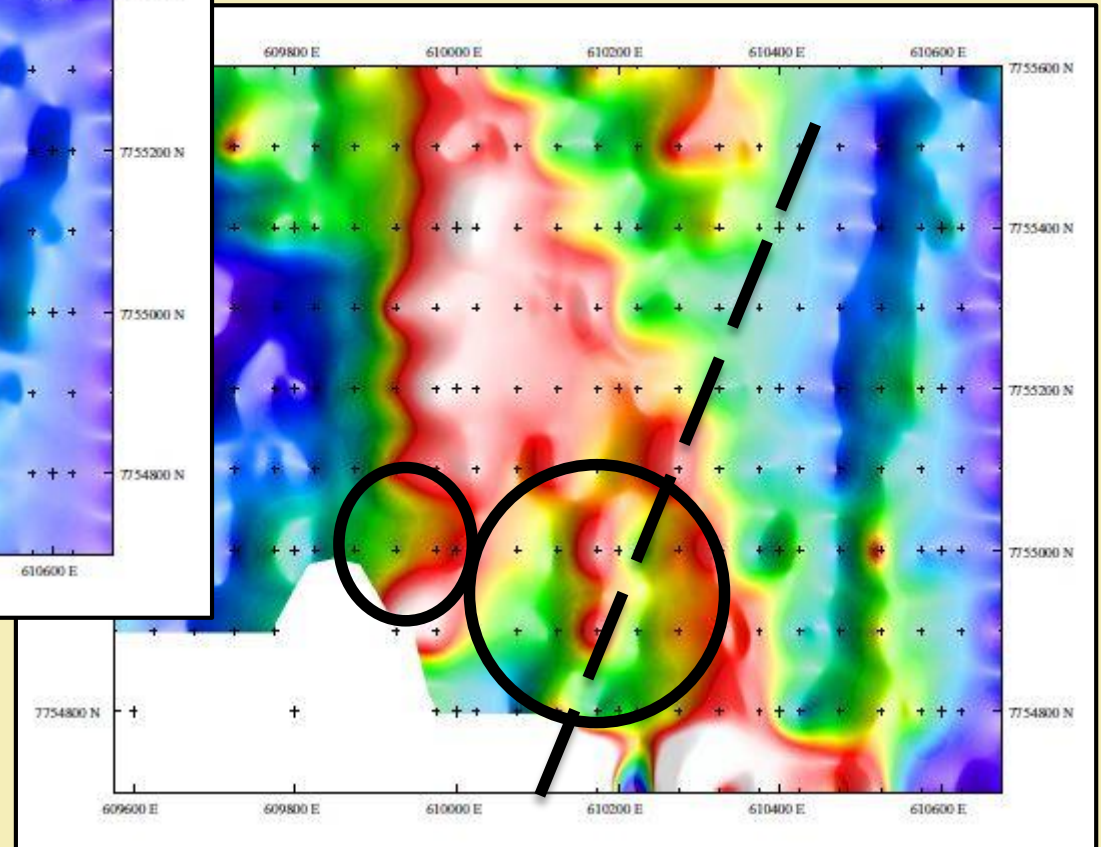
SAMPLE DESCRIPTION	Au ppm	Ag ppm	Cu ppm	Cu %
BMARS010	3.32	2.1	1,845	0.2
BMARS012	2.92	13.6	1,770	0.2
BMARS013	1.14	2.7	2,060	0.2
BMARS016	2.40	16.7	24	
BMARS017	4.11	2.4	456	
BMARS019	21.80	21.1	162	
BMARS025	2.27	25.9	60	
BMARS028	59.40	297.0	110	
BMARS029	15.60	165.0	9	
BMARS035	2.86	13.3	47	
BMARS038	0.36	0.7	35,000	3.5
BMARS039	0.01	0.3	46,000	4.6
BMARS040	3.18	3.7	1,140	
BMARS044	28.20	146.0	31	
BMARS051	0.68	8.3	3,400	0.3
BMARS052	34.30	99.0	102	
BMARS053	3.70	3.5	29,000	2.9
BMARS057	<0.01	4.4	3,710	0.4
BMARS058	0.06	70.6	51,000	5.1
BMARS059	0.15	183.0	173,000	17.3
BMARS060	0.03	37.3	70,000	7.0
BMARS061	0.17	7.7	7,930	0.8
BMARS062	0.37	342.0	177,000	17.7
BMARS064	0.11	7.6	4,360	0.4
BMARS066	0.18	13.0	1,580	0.2

# Marengo **HOMEWARD BOUND PROSPECT**

**GEOPHYSICS MAY 2018**



Gradient Array chargeability high anomaly



Gradient Array resistivity low anomaly



# Copperhead

Queensland, Australia

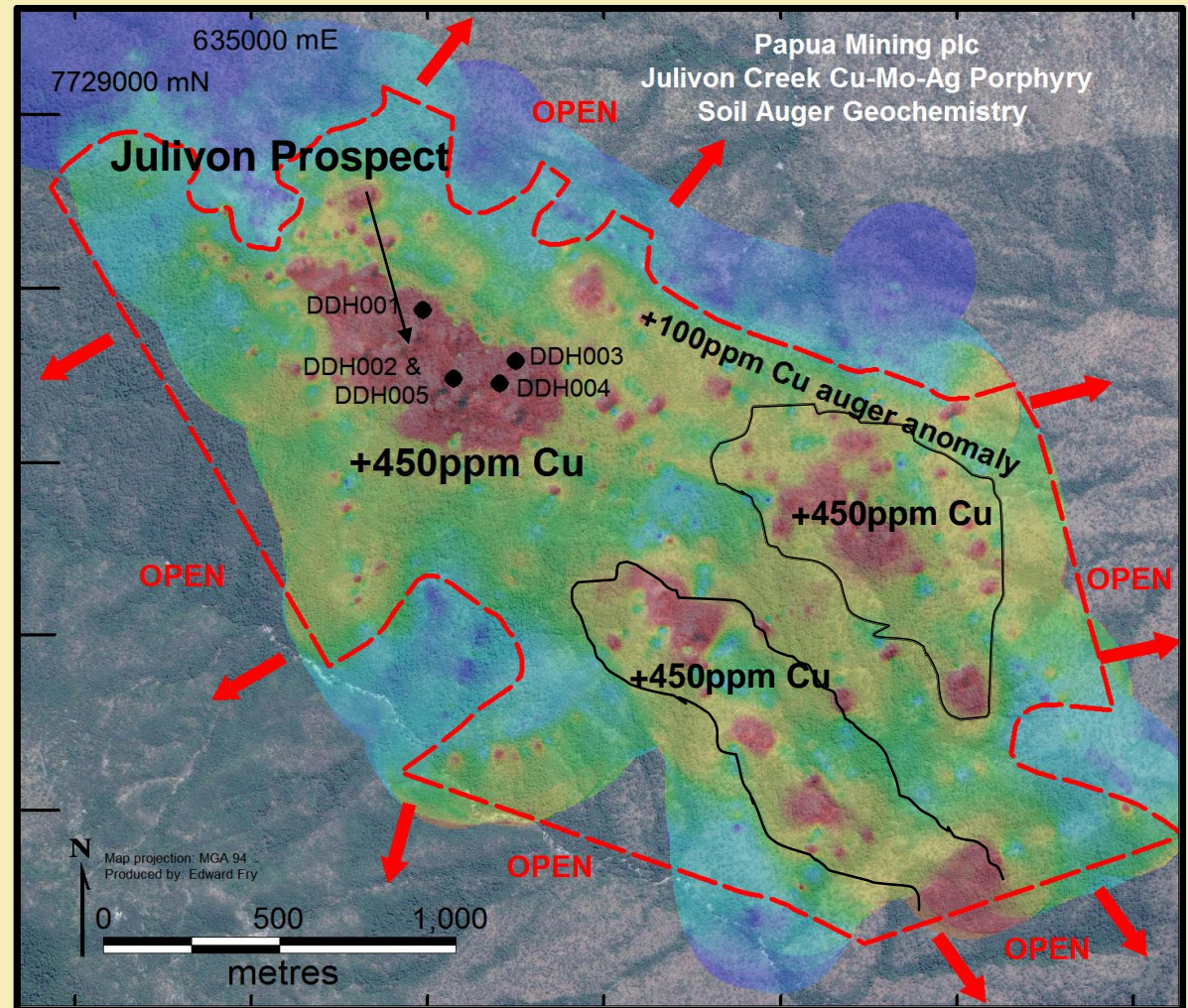
96.5 sq. km.

Porphyry Copper



## Copperhead **A LARGE-SCALE PROJECT**

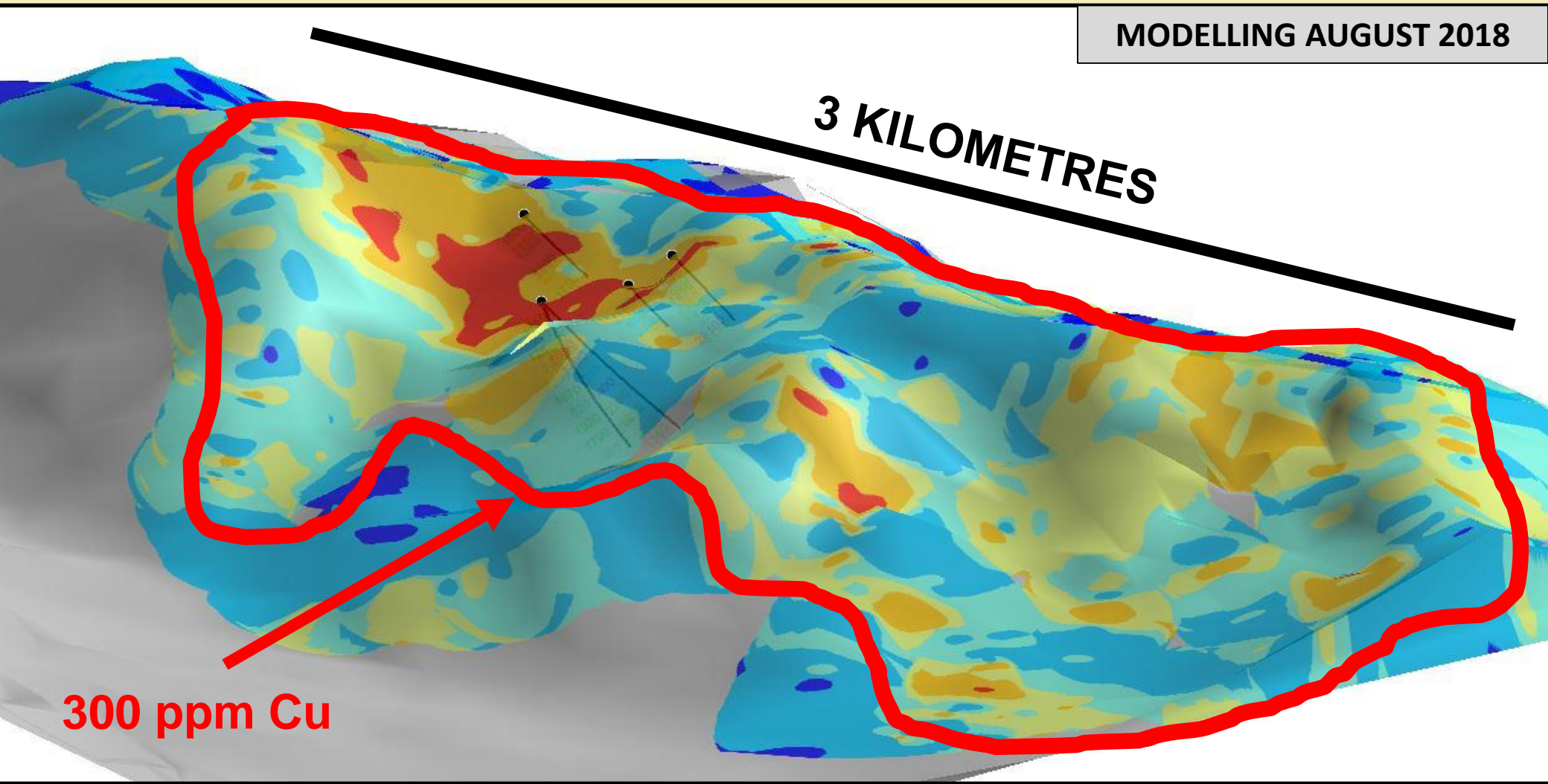
- 1970 Cu vein discovered at Julivon in 1970
- Auger drilling outlined a coherent +100ppm copper-in-soil anomaly in excess of 3km x 2km
- 5 holes by Carpentaria Exploration in 1972.  
(weighted average 0.25% Cu + 2.1g/t Ag)
- Includes  
2.81% Cu + 12g/t Ag  
potential for high-grade



Listed in the USGS 'Global Mineral Resource Assessment'

## Copperhead A LARGE COPPER ANOMALY

MODELLING AUGUST 2018



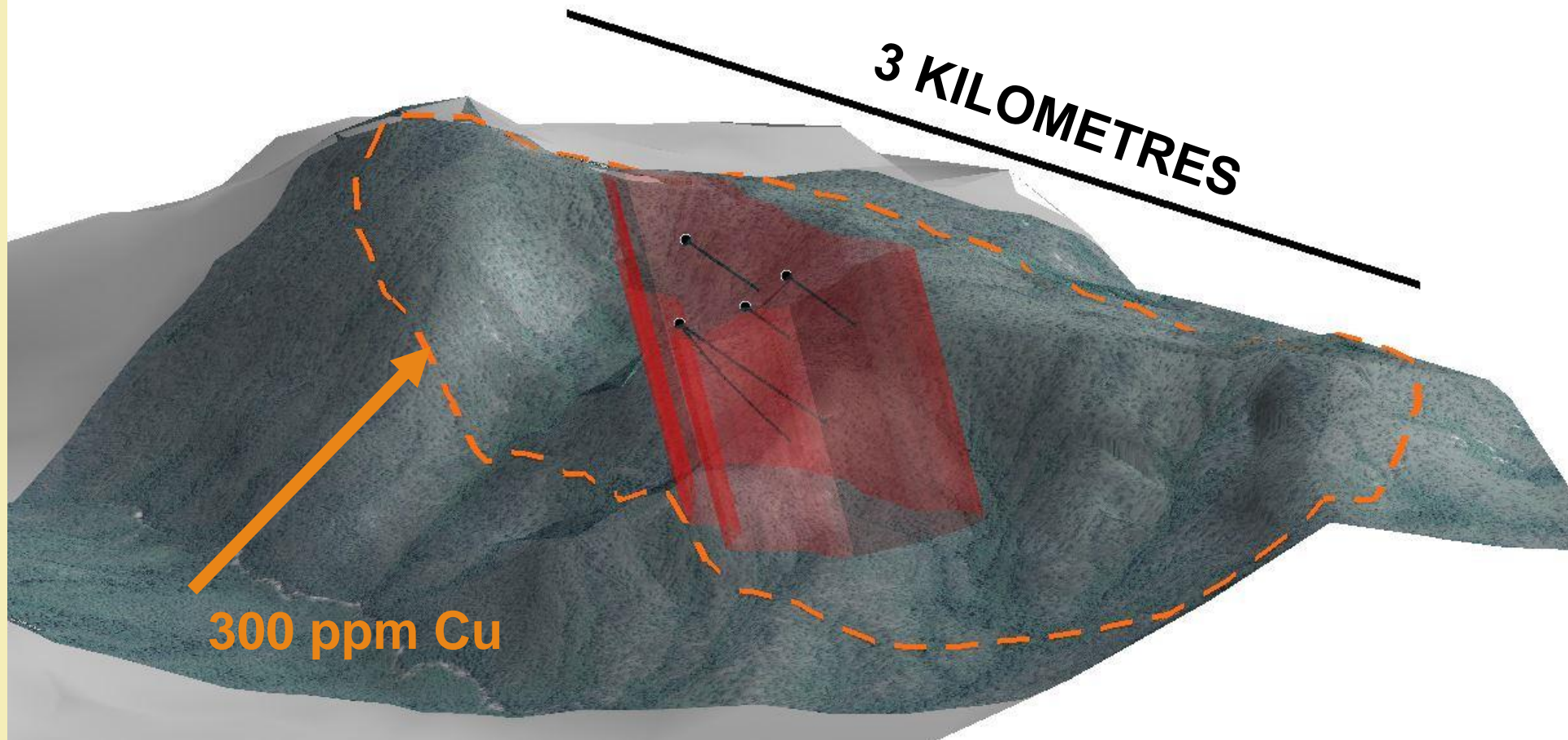
ROCKFIRE



## Copperhead **COPPER PLUNGING TO DEPTHS BEYOND 300m**

MODELLING AUGUST 2018

\*\* Target resource of 200Mt – 300Mt  
grading between 0.2% and 0.3% Cu







# Copper Dome

Queensland, Australia

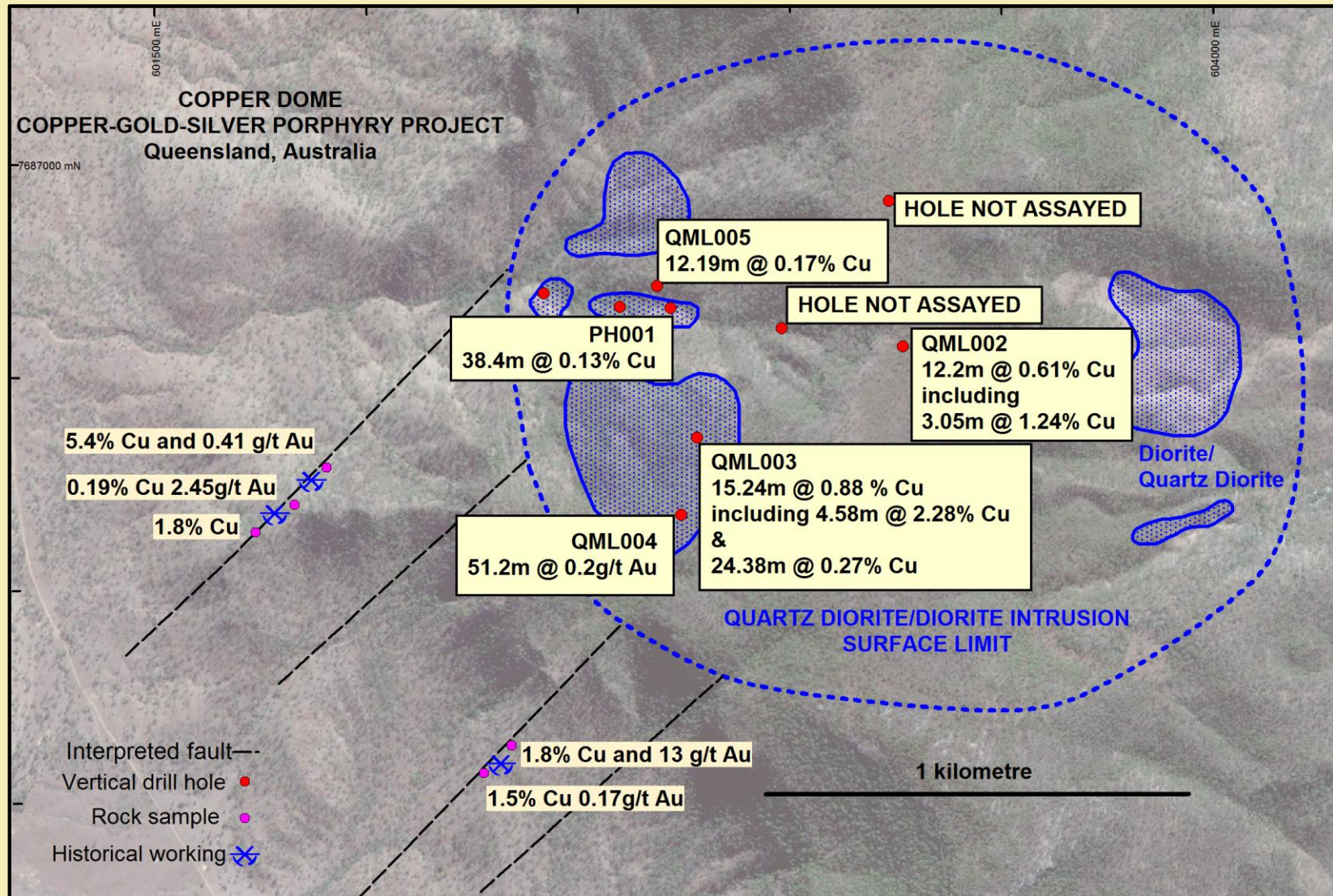
71.7 sq. km.

Porphyry Copper

## Copper Dome **A SECOND COPPER OPPORTUNITY**

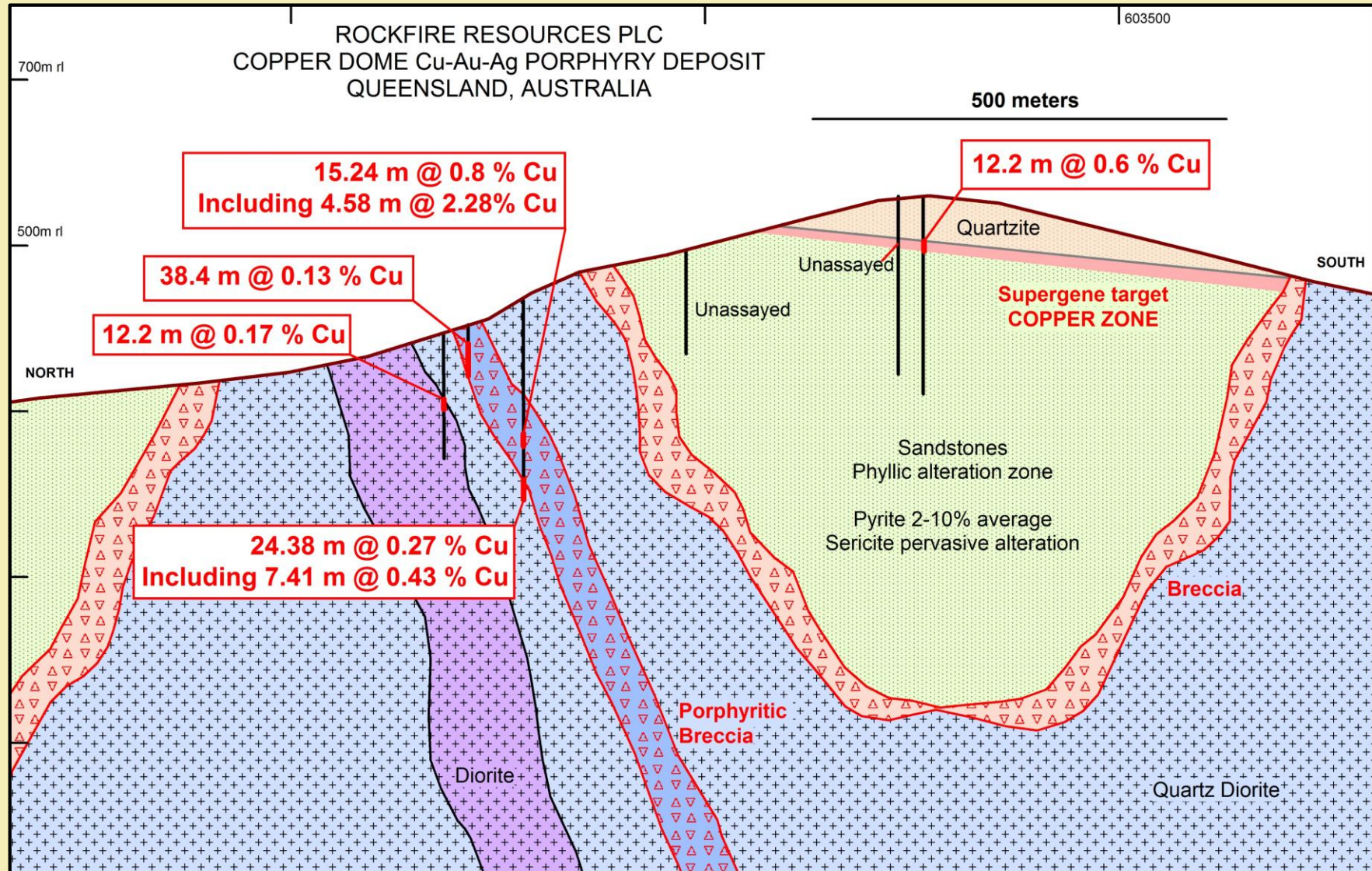
- Large-scale mineralised system, only 50km from Copperhead
- Surface expression over 2km long and 1km wide;
- Previous diamond drilling has intersected;
  - 15.24m @ 0.88 % Cu (including **4.58m @ 2.28 % Cu**) from 161m downhole depth
  - 12.20m @ 0.61 % Cu (including **3.05m @ 1.24 % Cu**) from 54m downhole depth
  - 24.38m @ 0.27 % Cu (including 7.4m @ 0.43% Cu) from 225m downhole depth
  - Percussion hole PH001 - 38m @ 0.13 % Cu (from 17m downhole depth)
- Diamond hole QML004 - **51.20m @ 0.20 g/t Au** (from 72m downhole depth)
- Many intervals of visible copper mineralisation remain un-assayed for copper and gold;
- Only sporadic gold analysis has been done, with gold peaking at 1.86 g/t Au in drilling;
- Outcrops at surface, near-surface exploration = lower exploration costs.

## Copper Dome **UNDER-EXPLORED, HIGH-POTENTIAL**





## Copper Dome **MULTIPLE MINERALISATION STYLES**





## Copperhead OPPORTUNITY WITH INFRASTRUCTURE

- Large, quality water supply
- Australia's largest copper refinery



Lake Proserpine  
20km from Copperhead

*There is no certainty that Rockfire Resources will be permitted to utilise any of the infrastructure shown. Neither the owners of the water supply, nor the owners of the refinery have been approached by the company and no discussion has commenced with any authorities regarding the use of this infrastructure.*



Glencore's Copper Refinery  
280km from Copperhead

# Rockfire Resources

## what we have achieved!

### Lighthouse

- ✓ RC drilling at Double Event
- ✓ Further regional assessment

### Marengo

- ✓ RC drilling
- ✗ Further geophysics (Dipole-dipole IP)

### Copperhead

- Geophysics (Gradient Array IP)

✓ Completed

• Scheduled

✗ Cancelled

## what can you expect?

### Lighthouse

- Structural mapping at Double Event
- X-Ray Florescence survey at Double Event
- Regional mapping and sampling

### Marengo

- Soil sampling at Homeward Bound

### Copperhead

- Geophysics (Gradient Array IP)
- Structural mapping

### Copper Dome

- Review existing data
- Soil sampling
- Exercise of Option (Yes/No)





**ROCKFIRE**  
RESOURCES

**(LON:ROCK)**

[www.rockfireresources.com](http://www.rockfireresources.com)

Salisbury House, London Wall  
London EC2M 5PS, England