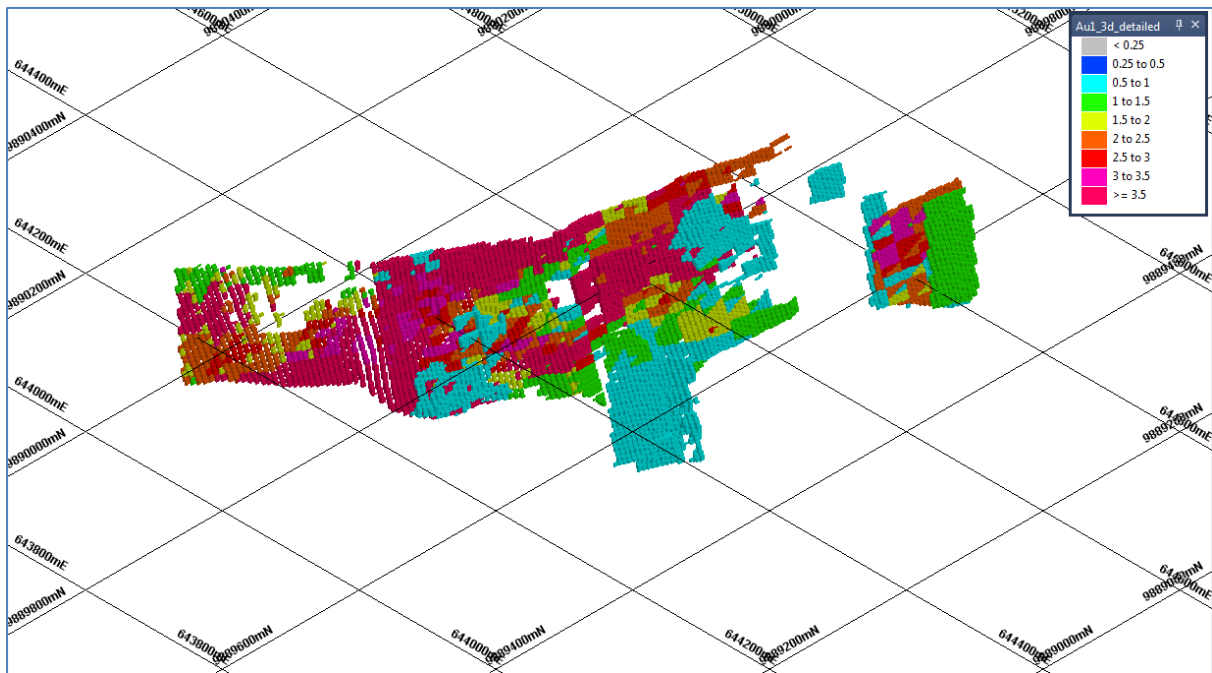
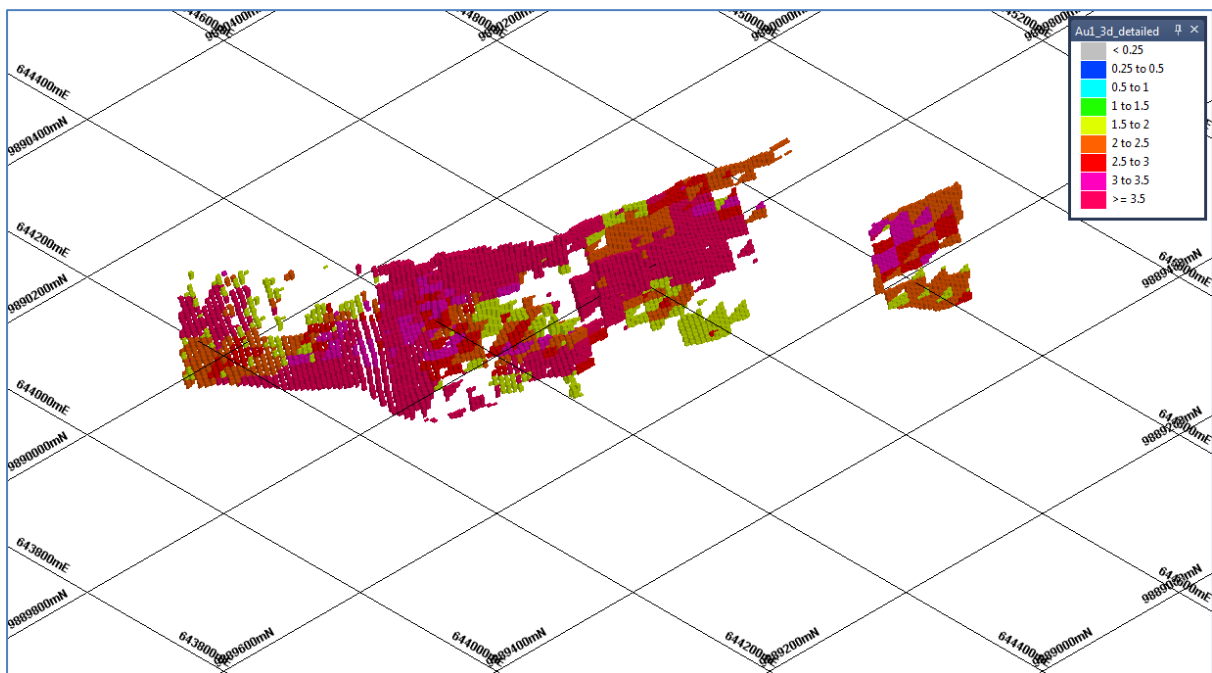


Figure 6 3D MRE block models for all MGP prospects at 0.5 g/t Au and 1.5 g/t Au cut-off

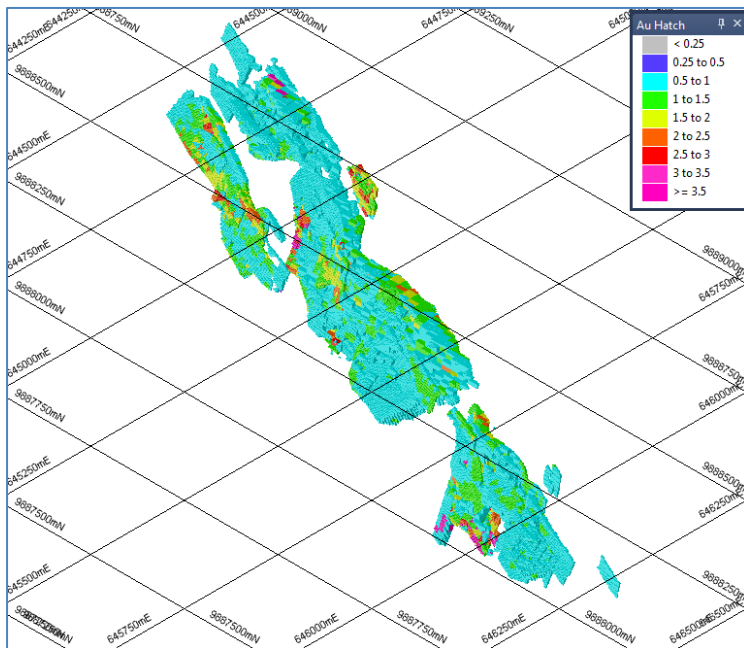


MK 0.5 g/t Au cut-off

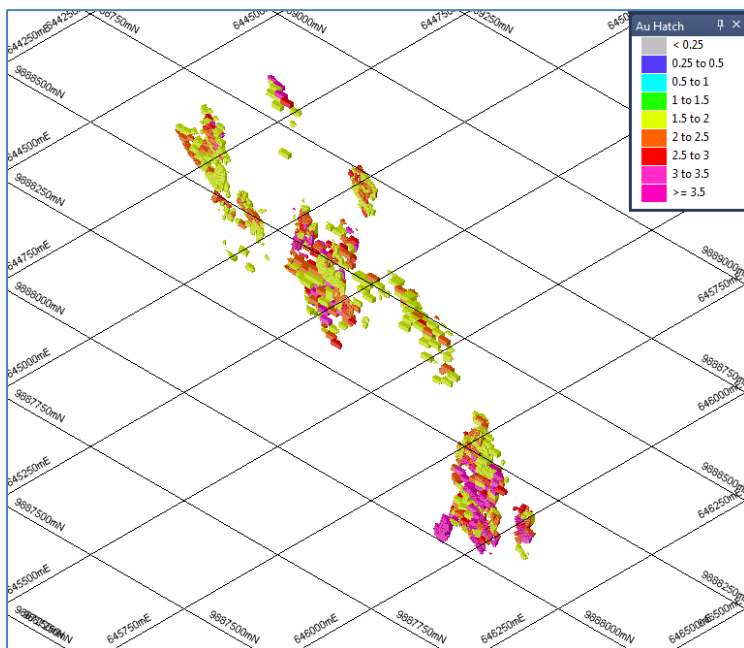


MK 1.5 g/t Au cut-off

MK Images: Isometric View looking North East; grid represents 200 metre spacing (northings and eastings)

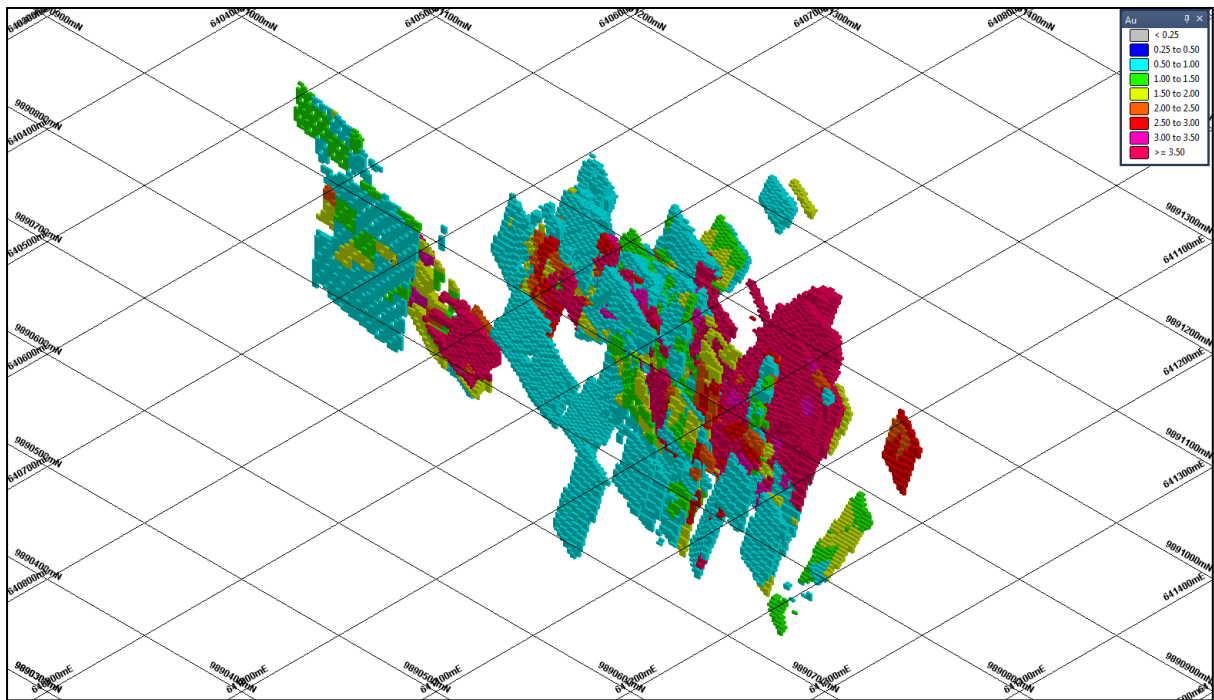


KKM 0.5 g/t Au cut-off

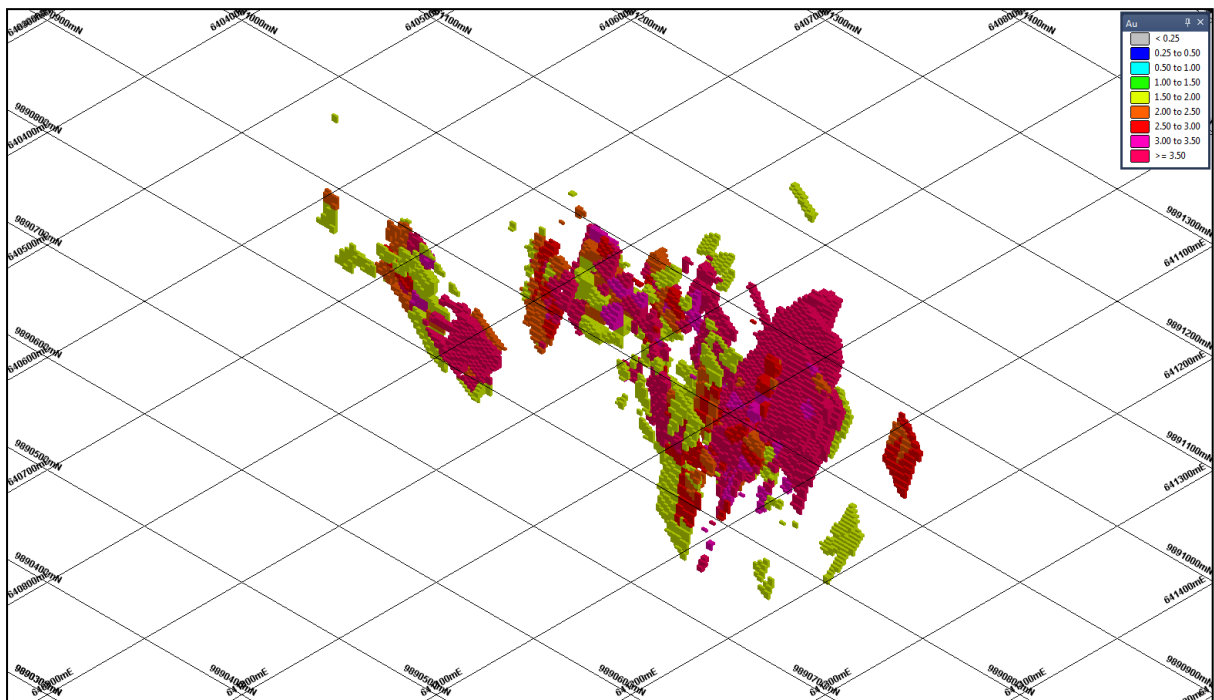


KKM 1.5 g/t Au cut-off

KKM Images: Isometric View looking North West; grid represents 250 metre spacing (northings and eastings)

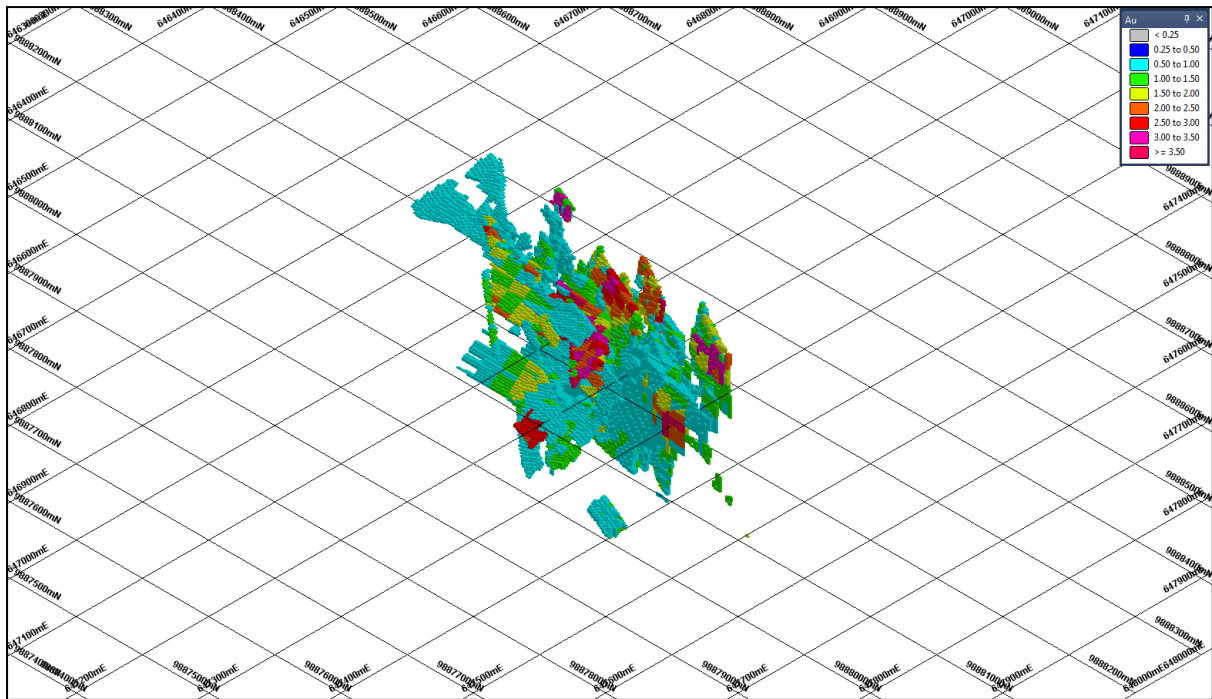


NZ 0.5 g/t Au cut-off

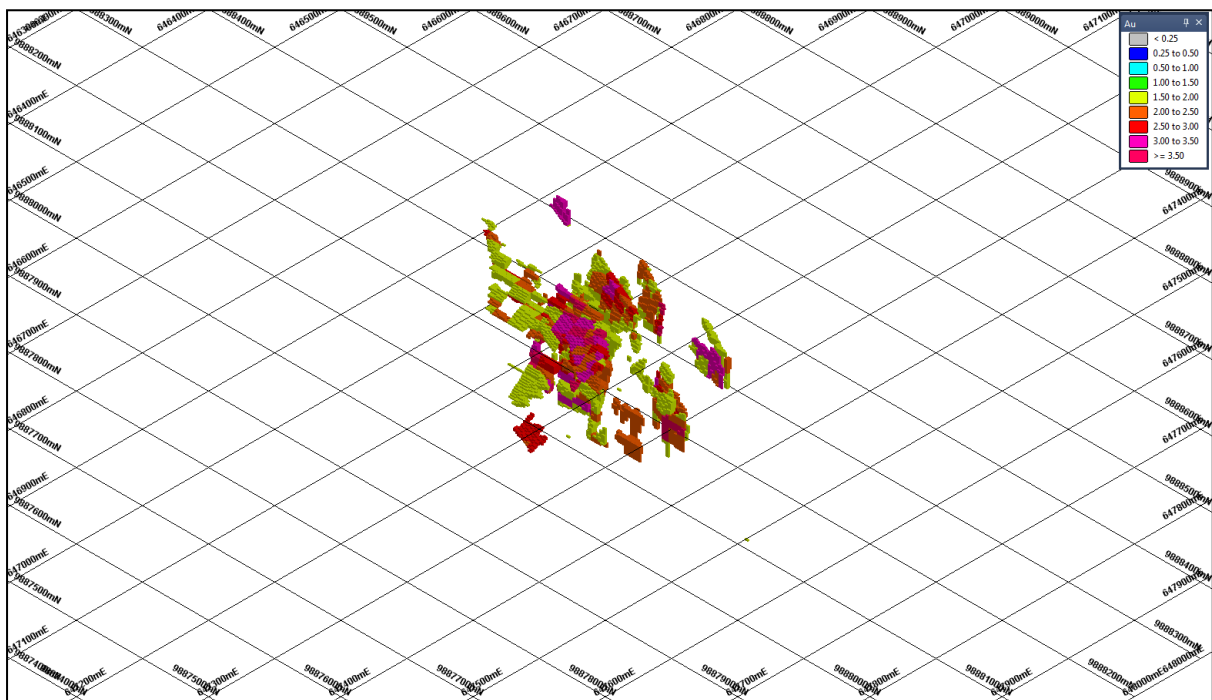


NZ 1.5 g/t Au cut-off

NZ Images: Isometric View looking North West; grid represents 100 metre spacing (northings and eastings)

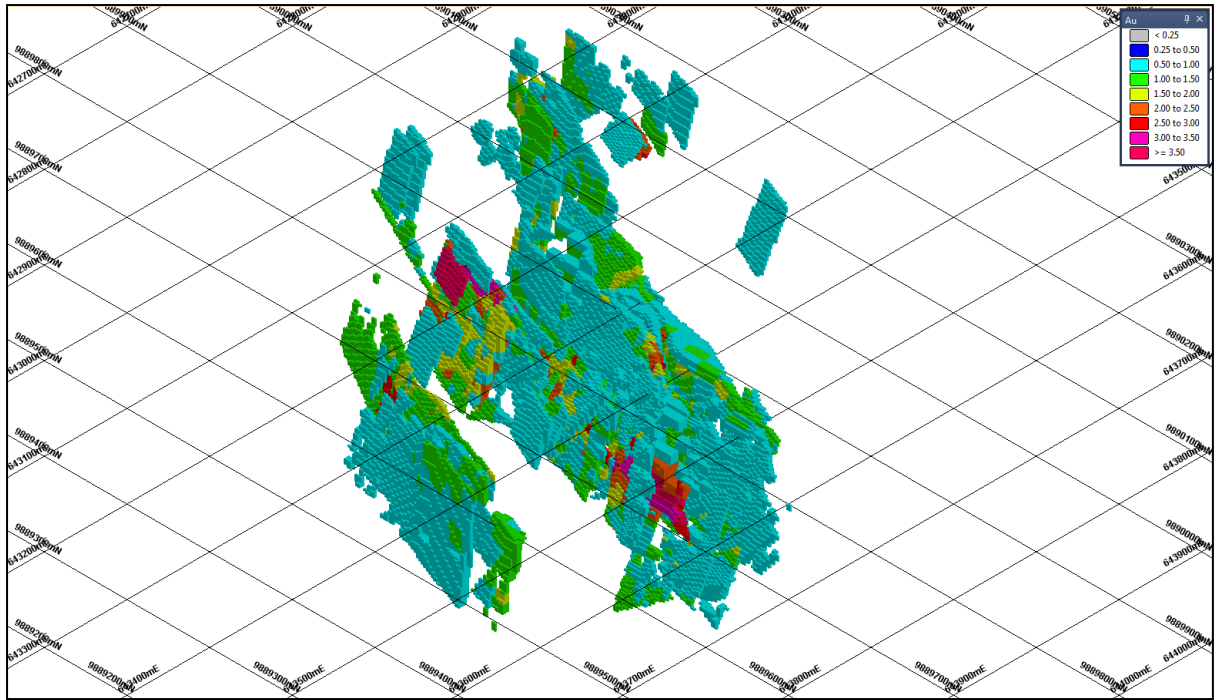


GM 0.5 g/t Au cut-off

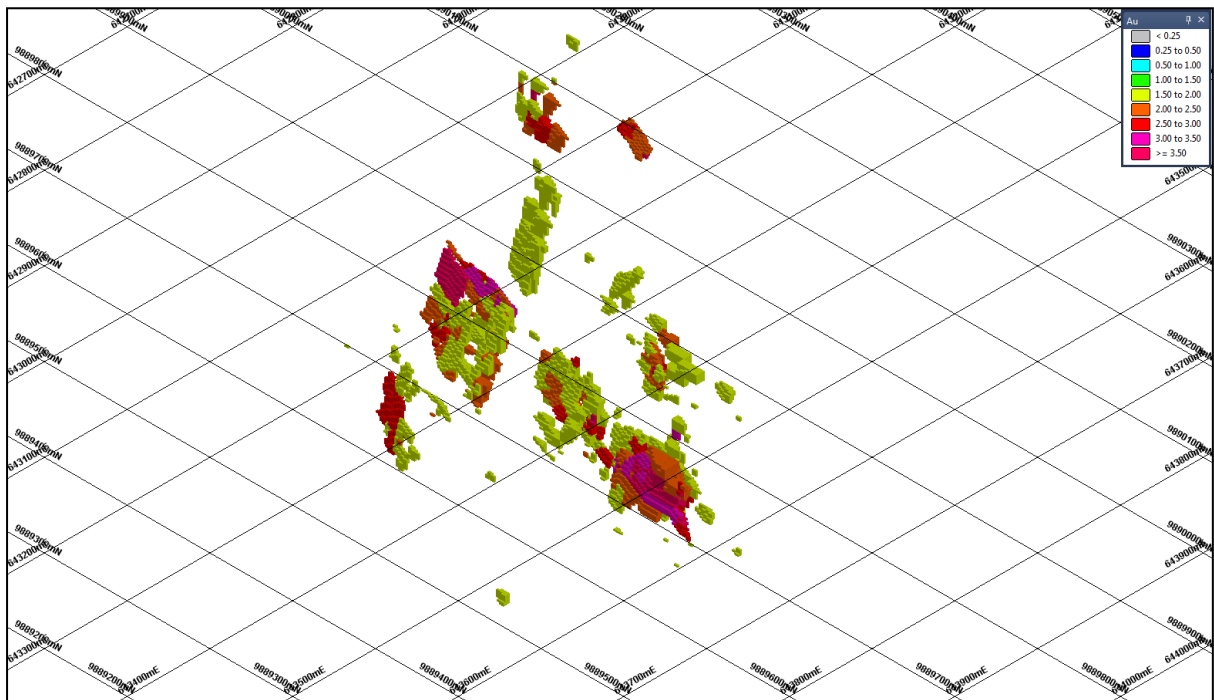


GM 1.5 g/t Au cut-off

GM Images: Isometric View looking North West; grid represents 100 metre spacing (northings and eastings)



KW 0.5 g/t Au cut-off



KW 1.5 g/t Au cut-off

KW Images: Isometric View looking North West; grid represents 100 metre spacing (northings and eastings)