

Table 1: RC drilling results from phase two of the 2015 Kiziltepe programme, arranged in order of the gram x metre intercepts (down-hole gold equivalent grade multiplied by intercept thickness). The intercepts reported in this table are the down-hole lengths. Intercept grades have been calculated using a 0.5 g/t Au minimum cut-off.

| Hole ID | From (m) | To (m) | Intercept (m) | Grade Au (g/t) | Grade Ag (g/t) | Grade Au equiv. (g/t) |
|-------------|----------|--------|---------------|----------------|----------------|-----------------------|
| KTP-RC07-15 | 65 | 87 | 22 | 2.93 | 29.76 | 3.43 |
| KTP-RC19-15 | 105 | 115 | 10 | 2.32 | 46.79 | 3.10 |
| KTP-RC15-15 | 9 | 14 | 5 | 3.23 | 68.60 | 4.37 |
| KTP-RC17-15 | 8 | 11 | 3 | 4.98 | 74.57 | 6.22 |
| KTP-RC14-15 | 17 | 21 | 4 | 3.38 | 76.40 | 4.65 |
| KTP-RC16-15 | 9 | 13 | 4 | 2.68 | 47.50 | 3.47 |
| KTP-RC18-15 | 14 | 17 | 3 | 3.47 | 36.00 | 4.07 |
| KTP-RC13-15 | 17 | 24 | 7 | 0.78 | 12.30 | 0.98 |
| KTP-RC19-15 | 51 | 56 | 5 | 0.99 | 13.62 | 1.22 |
| KTP-RC11-15 | 14 | 19 | 5 | 0.87 | 15.92 | 1.14 |
| KTP-RC12-15 | 10 | 16 | 6 | 0.53 | 9.33 | 0.69 |
| KTP-RC10-15 | 13 | 15 | 2 | 1.49 | 22.55 | 1.87 |
| KTP-RC09-15 | 29 | 31 | 2 | 1.42 | 20.40 | 1.76 |
| KTP-RC08-15 | 17 | 20 | 3 | 0.83 | 7.47 | 0.95 |
| KTP-RC13-15 | 11 | 13 | 2 | 0.91 | 4.15 | 0.98 |
| KTP-RC06-15 | 42 | 44 | 2 | 0.56 | 4.70 | 0.64 |
| KTP-RC19-15 | 119 | 120 | 1 | 0.65 | 16.50 | 0.92 |
| KTP-RC09-15 | 41 | 42 | 1 | 0.66 | 5.90 | 0.76 |
| KTP-RC14-15 | 8 | 9 | 1 | 0.54 | 2.30 | 0.58 |

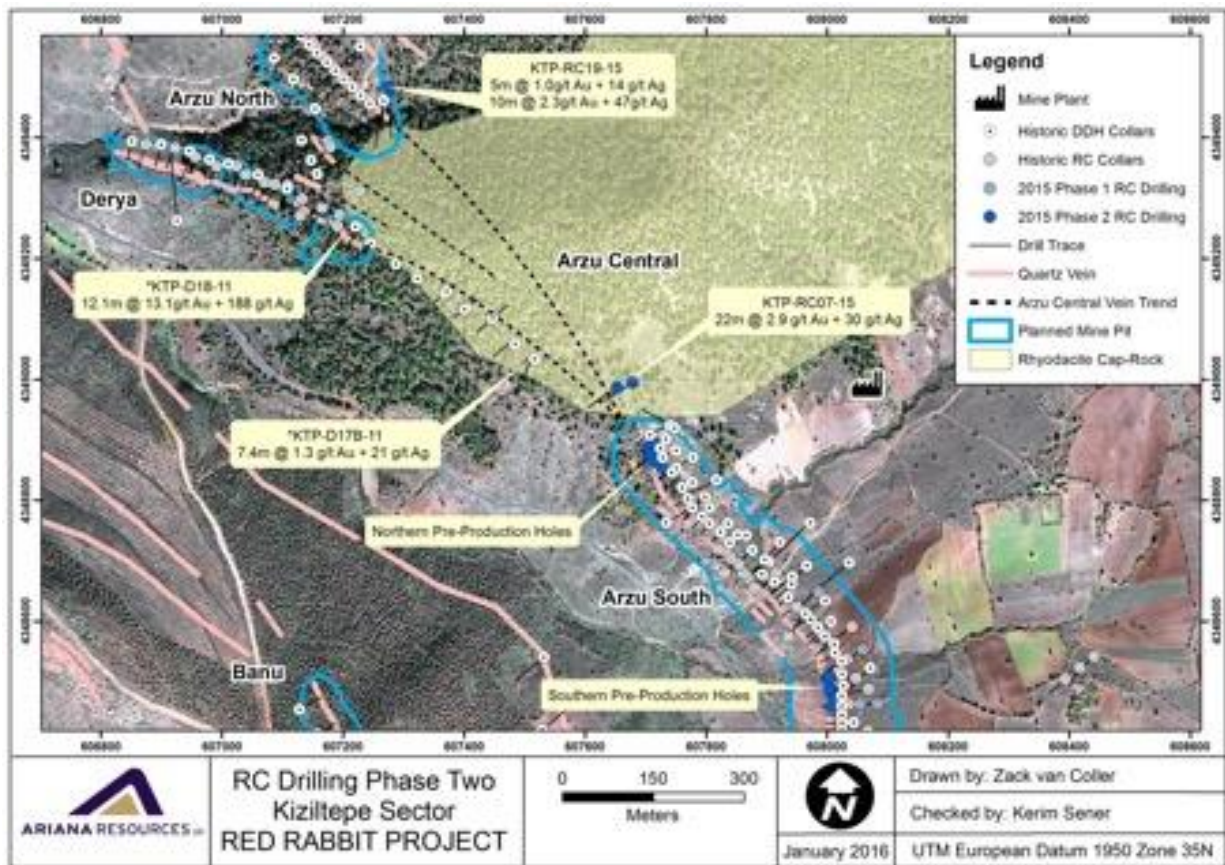


Figure 1: Map of drilling completed at the Kiziltepe Mine to date. Both new and historical drilling is shown. Key intercepts obtained from the 2015 are identified in addition to certain intercepts from historical drilling (identified by a *).

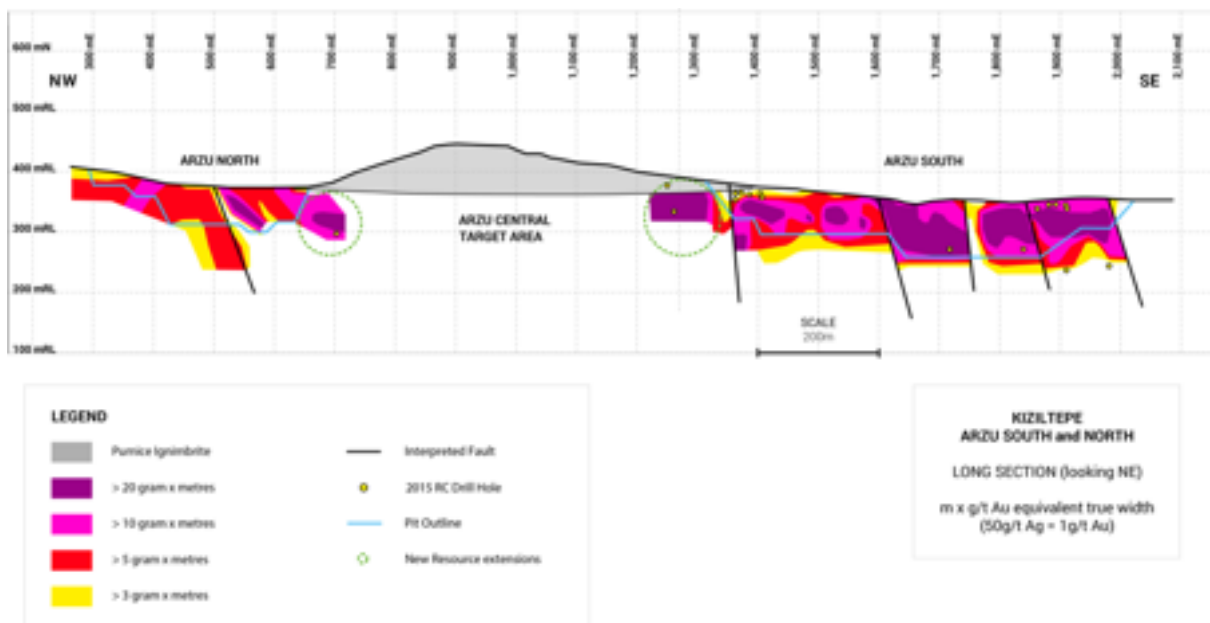


Figure 2: Long-section through the Arzu structure showing the position of new drilling and selected older drilling. The contours show the gram x metre intercepts. The approximate outlines of the open-pits at Arzu South and North are also shown and these give an indication of the limits of previous resource modelling. The extension of mineralisation beyond these areas in to Arzu Central is encouraging and provides immediate additional resource upside.



Figure 3: Three dimensional model of the Arzu structure showing the latest modelling of the main veins (in yellow) and the Arzu Central Target (in grey). The current designed pits are also shown in red. The new extensions of mineralisation along strike of the current Arzu South, North and Derya pits is very apparent.