

Figure One | Panton PGM Project Location

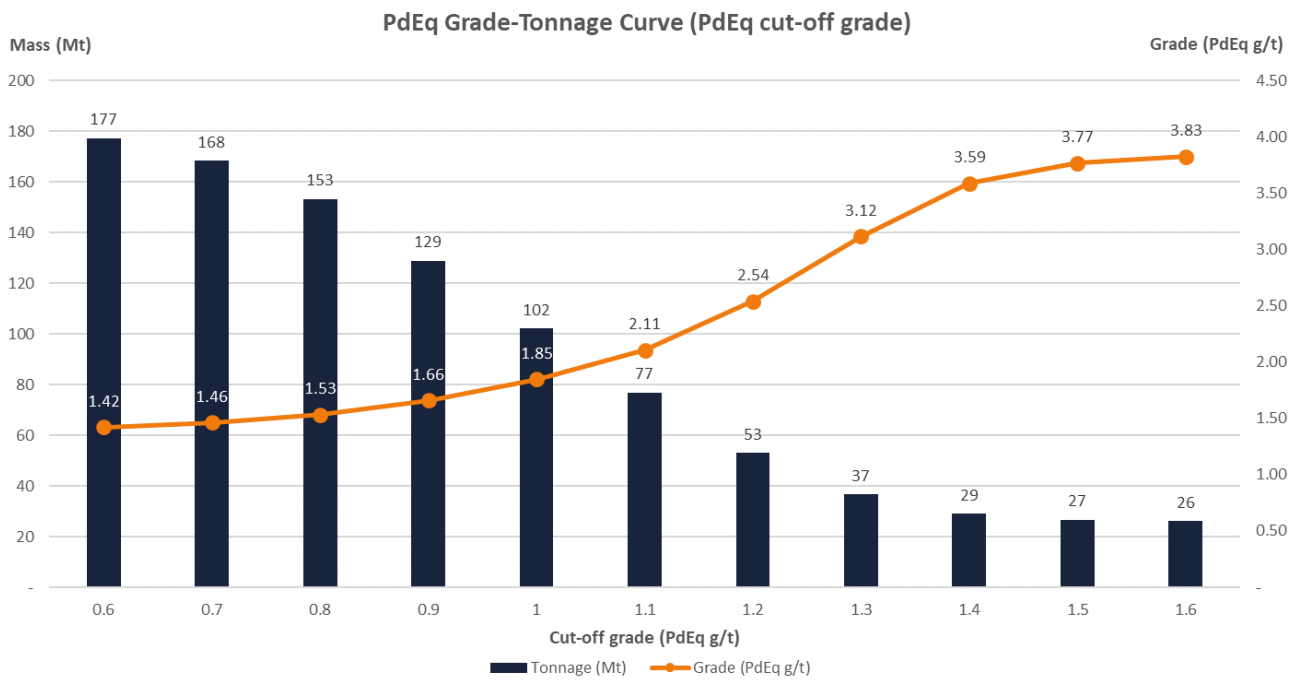


Figure Two | Panton PdEq Grade-Tonnage Curve

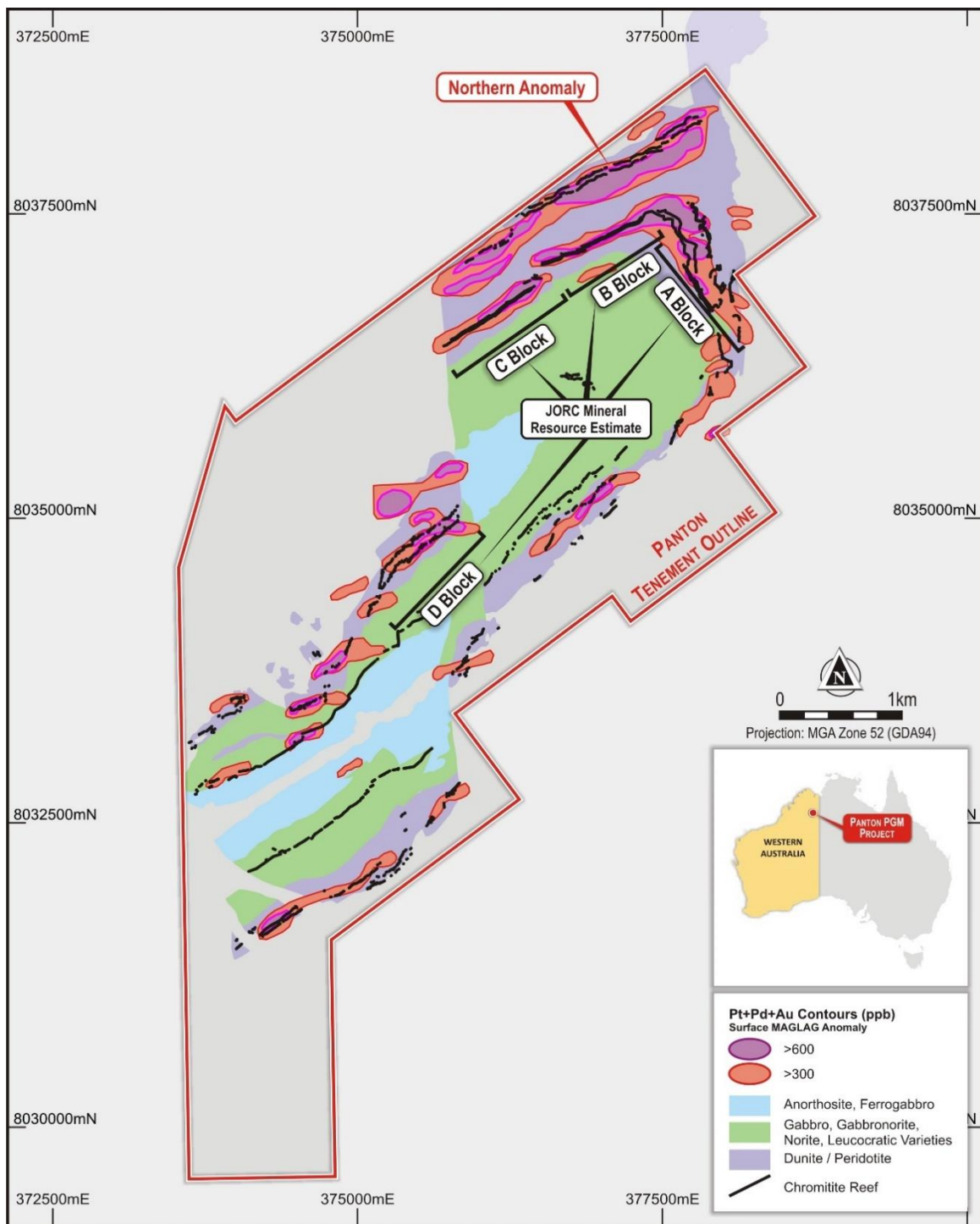


Figure Three | Panton Plan View - Resource Area



**Panton Sill  
PGM-Ni Project**

**NEW MRE of 129Mt @ 1.20g/t PGM<sub>3E</sub>, 0.19% Ni and 154ppm Co (1.66g/t PdEq) inc. 25Mt @ 3.57g/t PGM<sub>3E</sub>, 0.24% Ni and 192ppm Co (3.86g/t PdEq)**

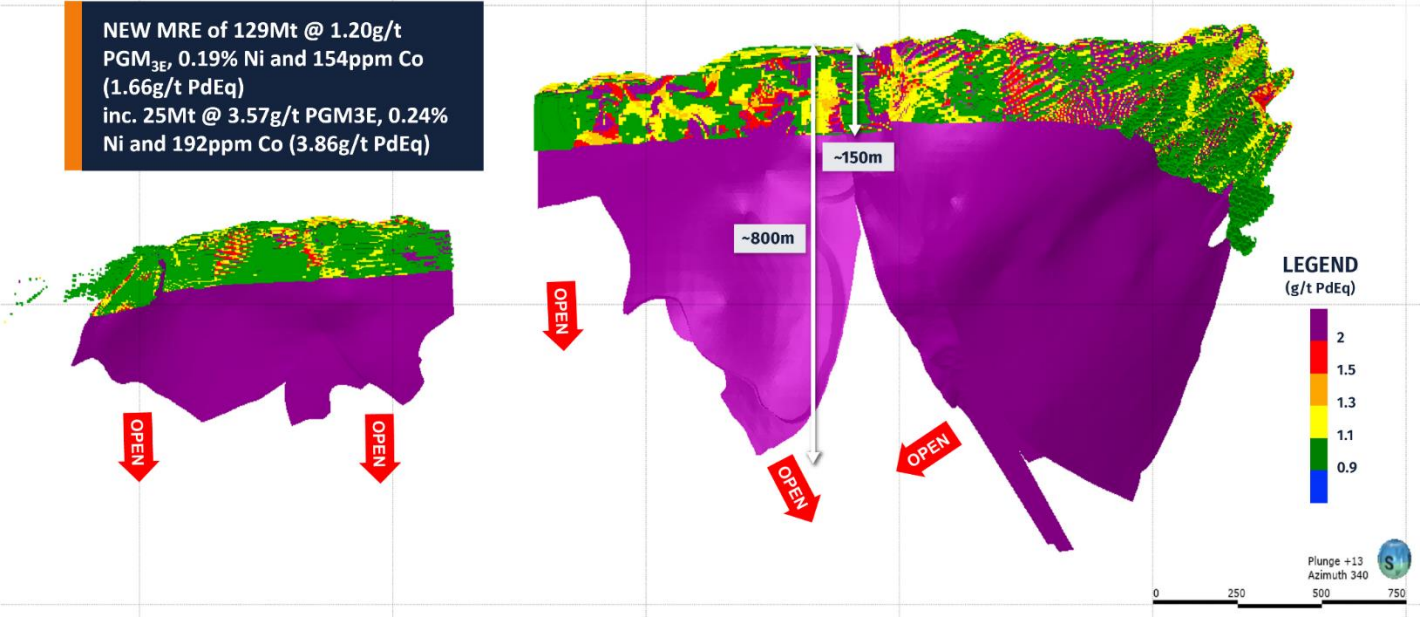
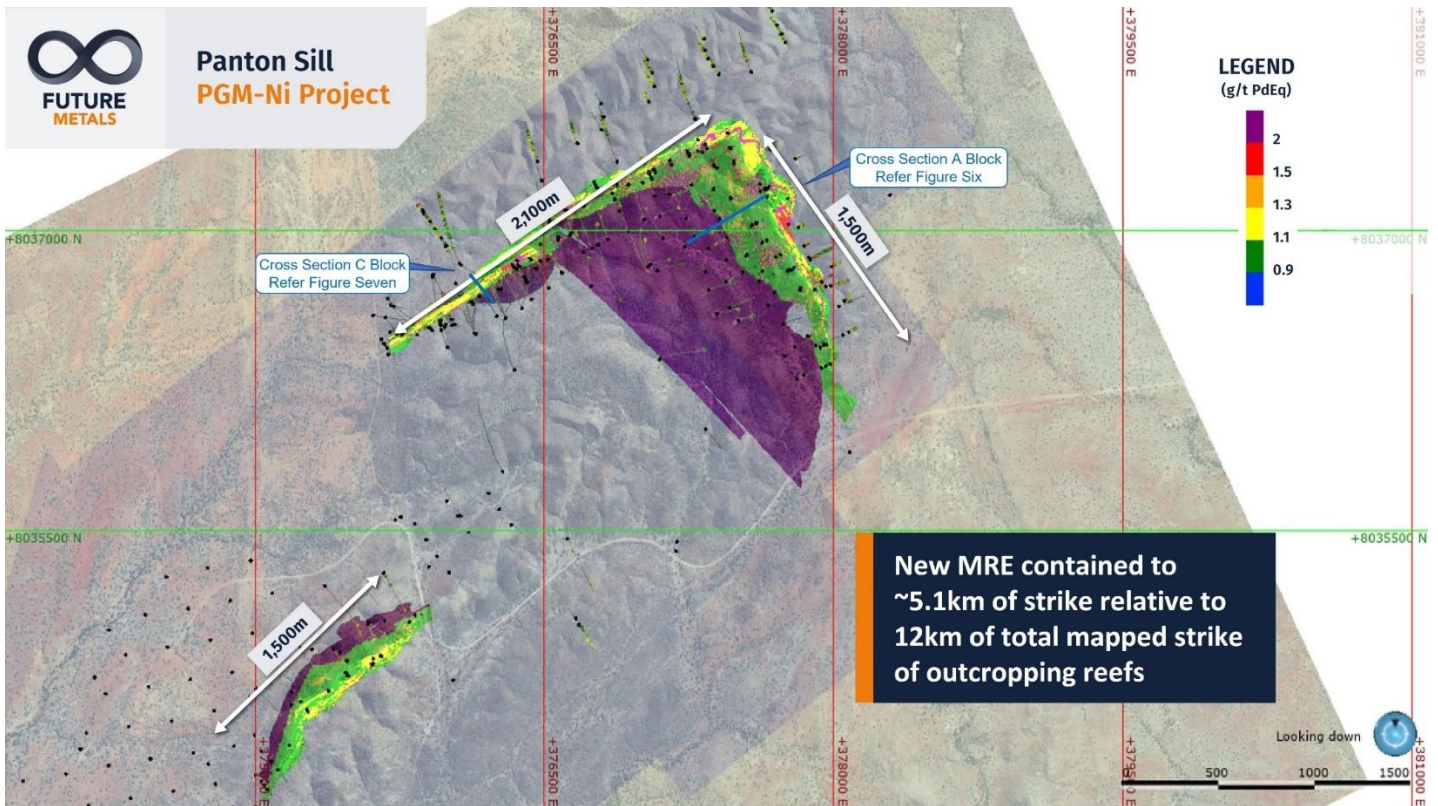


Figure Four | 3D View of Panton MRE Area Looking North-West



**Panton Sill  
PGM-Ni Project**



**New MRE contained to ~5.1km of strike relative to 12km of total mapped strike of outcropping reefs**

Figure Five | Plan View of Panton including MRE area



**Panton Sill  
PGM-Ni Project**

**Legend  
(g/t PdEq)**

- 0.000 <= ■ < 0.900
- 0.900 <= ■ < 1.100
- 1.100 <= ■ < 1.300
- 1.300 <= ■ < 1.500
- 1.500 <= ■ < 2.000
- 2.000 <= ■ < 999.000

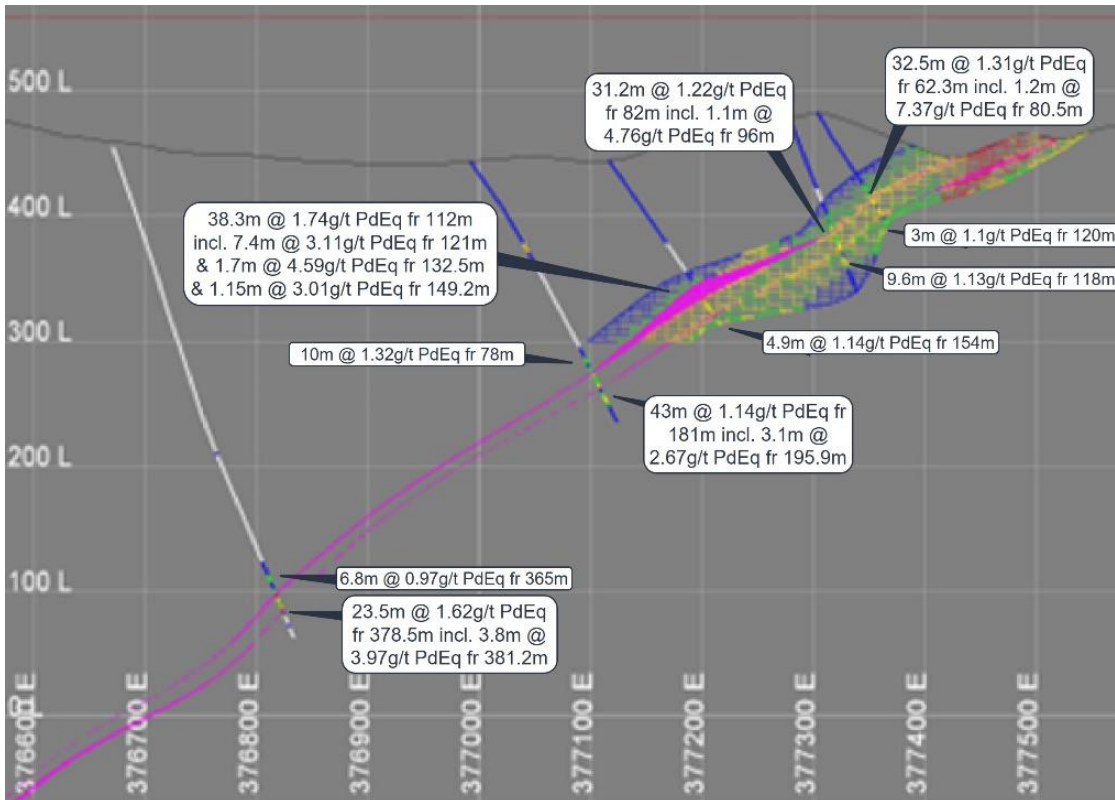


Figure Six | Cross Section of Panton Block Model – A Block



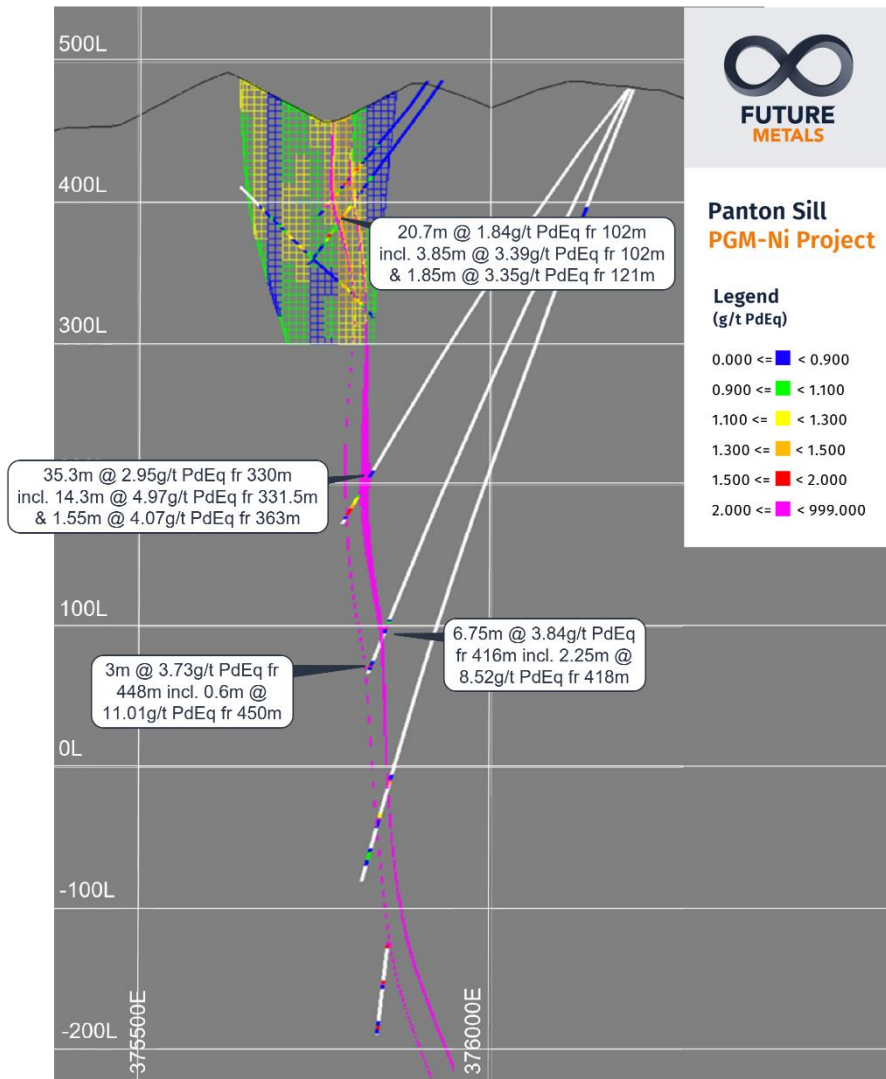


Figure Seven | Cross Section of Panton Block Model – C Block

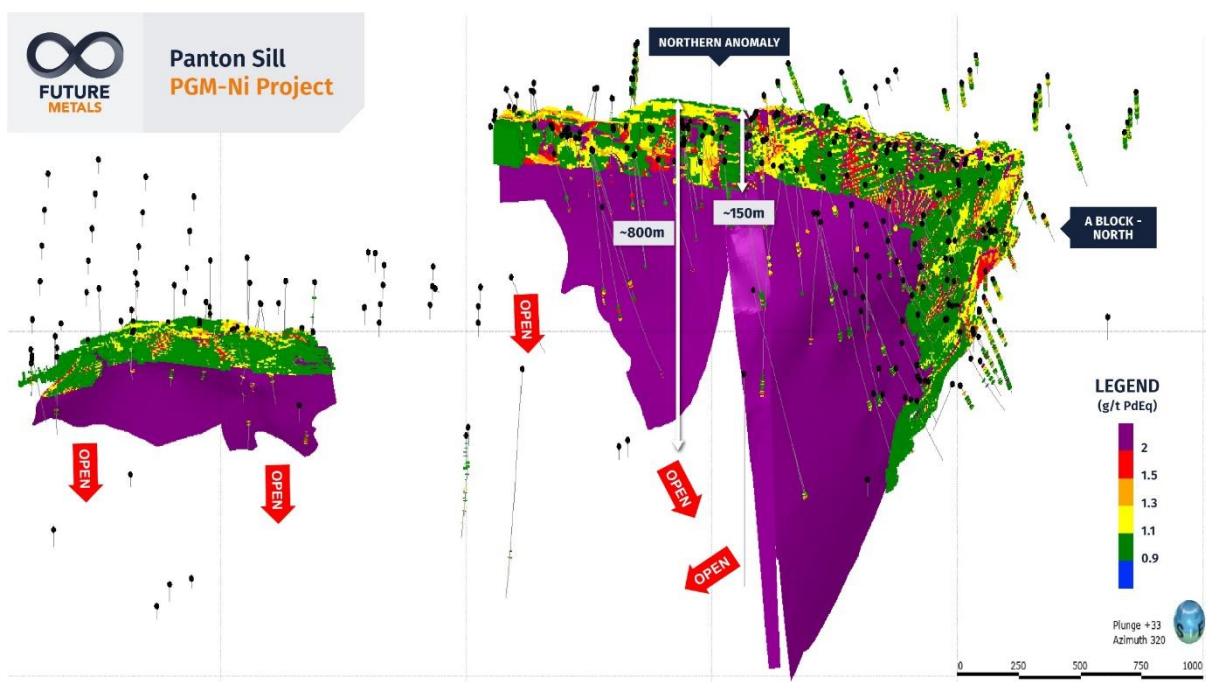


Figure Eight | 3D View of Panton MRE Area Looking North-West, including drill holes

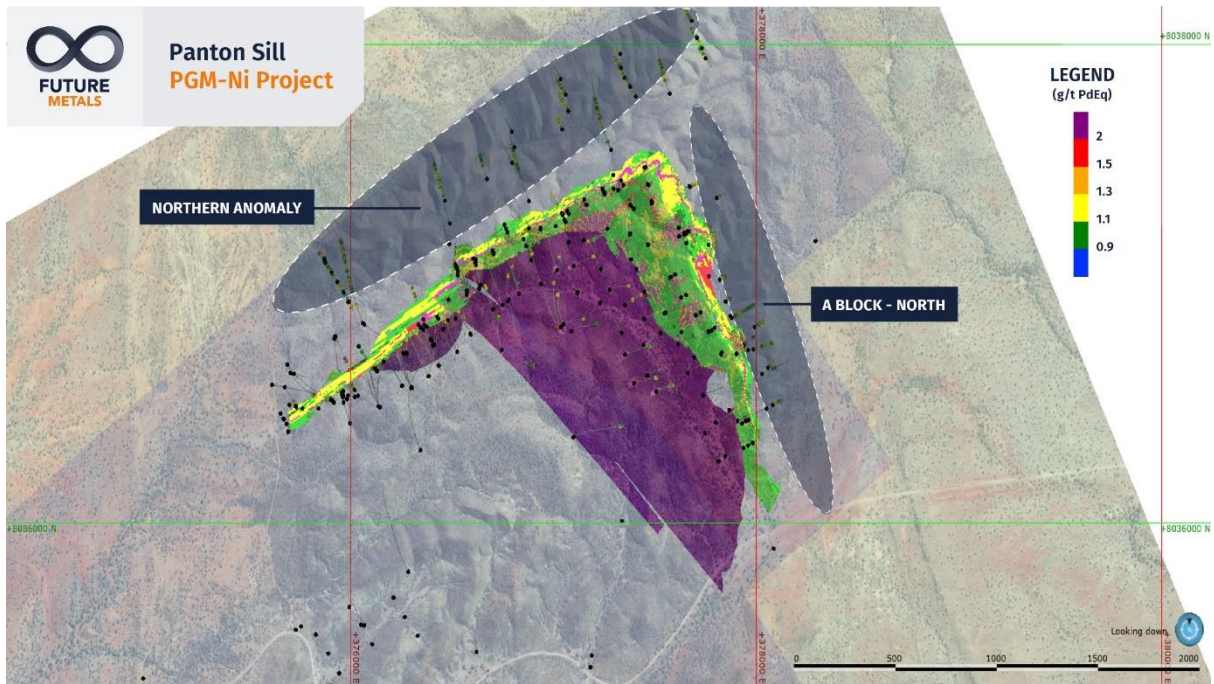


Figure Nine | Plan View of Panton including target zones for near-surface exploration