



# SUKARI GOLD PROJECT

## LONG-SECTION - 10650mE

### Selected Drill Holes

RCD1263	10050mN	65m @ 3.96g/t from 283m
RCD1177	10200mN	65m @ 18.31g/t from 367m (including 5m @ 209.42g/t)
RCD1178	10300mN	105m @ 4.10g/t from 380m and 17m @ 12.45g/t from 500m
D1366	10350mN	58m @ 2.53g/t from 238m - 10m @ 45.94g/t from 511m - 39m @ 1.76g/t from 591m
RCD1143	10400mN	212m @ 2.37g/t from 311m
D1073	10450mN	197m @ 2.18g/t from 320m
D1280	10550mN	46m @ 2.21g/t from 469m and 35m @ 164.09g/t from 550m
RCD553	11075mN	111m @ 15.06g/t from 473m and 18m @ 2.59g/t from 595m
D1355	11250mN	12m @ 3.91g/t from 314m - 77m @ 4.90g/t from 575m - 20m @ 1.45g/t from 564m
D1203	11950mN	148m @ 1.33g/t from surface

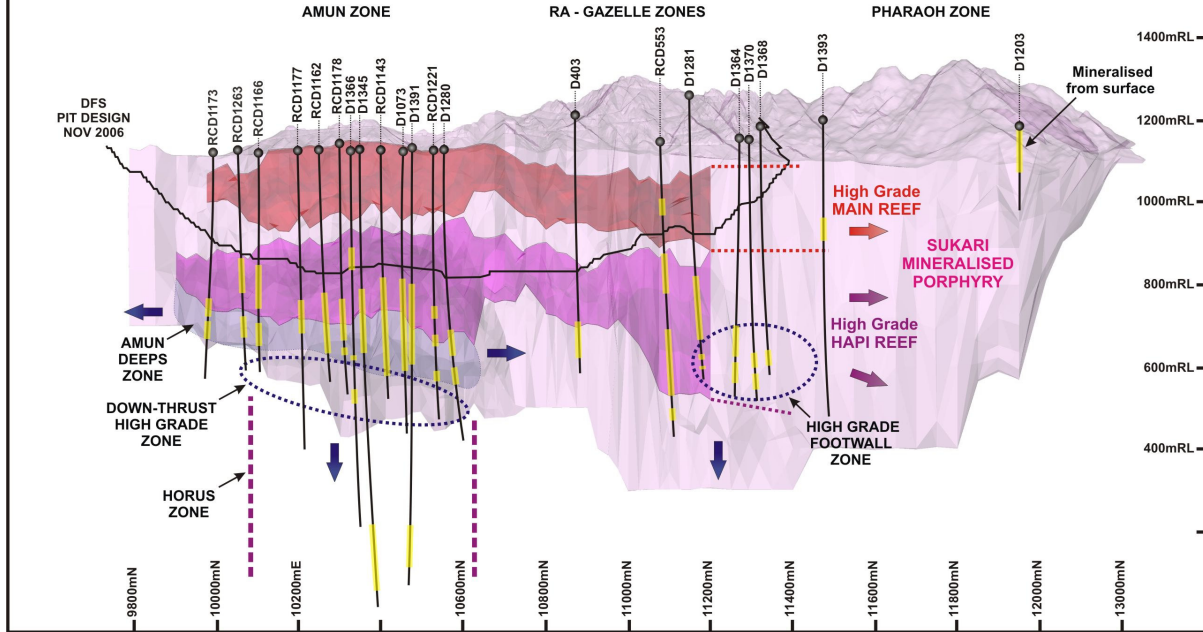


Figure 1 – Schematic Long section - 10650E; showing main target areas and recent high grade drilling results – Amun Deeps, Downthrust Zone and Pharaoh Zones