



Diversified Explorer & Developer Emerging Frontier Provinces

Len Kolff COO & Chief Geologist

IMARC Africa Focus Day 29 October 2018

Disclaimer

IMPORTANT NOTICE

These presentation slides (the "Slides") have been issued by IronRidge Resources Limited (the "Company") in relation to an update on activities by the Company. These Slides do not comprise an admission document, listing particulars or a prospectus relating to the Company, do not constitute an offer or invitation to purchase or subscribe for any securities of the Company and should not be relied on in connection with a decision to purchase or subscribe for any such securities. The Slides and the accompanying verbal presentation do not constitute a recommendation regarding any decision to sell or purchase securities in the Company.

The Slides and the accompanying verbal presentation are confidential and the Slides are being supplied to you solely for your information and may not be reproduced or distributed to any other person or published, in whole or in part, for any purpose. No reliance may be placed for any purpose whatsoever on the information contained in the Slides and the accompanying verbal presentation or the completeness or accuracy of such information. No representation or warranty, express or implied, is given by or on behalf of the Company, directors, officers, employees, agents or advisors or any other person as to the accuracy or completeness of the information or opinions contained in the Slides and the accompanying verbal presentation, and no liability is accepted by such persons for any such information or opinions or otherwise arising in connection therewith (including in the case of negligence, but excluding any liability for fraud).

The Slides contain certain statements and expressions of belief, expectation or opinion which are forward-looking statements, and which relate, inter alia, to the Company's proposed strategy, plans and objectives or to the expectations or intentions of the Company's directors. Such forward-looking statements involve known and unknown risks, uncertainties and other important factors beyond the control of the Company that could cause the actual performance or achievements of the Company to be materially different from such forward-looking statements. Accordingly, you should not rely on any forward-looking statements and neither the Company nor SP Angel accept any obligation to disseminate any updates or revisions to such forward-looking statements. Any statement as to the past activities of the Company's directors should not be relied upon as being an indication of their future performance.

The Slides have not been approved by an authorised person for the purposes of section 21 of the Financial Services and Markets Act 2000 ("FSMA"). They are exempt from the general restriction on the communication of invitations or inducements to engage in investment activity set out in section 21 of FSMA on the grounds that they are directed only at those persons who have professional experience in matters relating to investments and who are: (i) investment professionals (within the meaning of article 19(5) of The Financial Services and Markets Act 2000 (Financial Promotion) Order 2005 as amended (the "FPO")); (ii) persons or entities of a kind described in article 49(2)(a) to (d) of the FPO; and (iii) other persons who have professional experience in matters relating to investments and to whom it may otherwise lawfully be communicated (all such persons together being referred to as "Relevant Persons"). Any investment, investment activity or controlled activity to which the Slides relate is available only to Relevant Persons and will be engaged in only with Relevant Persons. Persons of any other description, including those that do not have professional experience in matters relating to investments, should not rely or act upon the Slides. Reliance on the communication set out in these Slides for the purpose of engaging in any investment activity may expose an individual to a significant risk of losing all of the property invested or of incurring additional liability. Any individual who is in any doubt about the investment to which these Slides relate should consult an authorised person specialising in advising on investments of the kind referred to in these Slides.

Pursuant to the Market Abuse Regulation (Regulation 596/2014) ("MAR"), the Slides constitute a market sounding for the purposes of Article 11 of MAR. By accepting the Slides, you warrant that you are able to receive market soundings, consent to receiving inside information, acknowledge that you are prohibited from using any inside information disclosed to you in any manner and agree to keep the inside information confidential. You irrevocably give your consent for your name to be entered on the Company's insider list and any other Company records regarding the provision of the Slides or the discussion of their content.

Information in this report relating to the exploration results is based on data reviewed by Mr Lennard Kolff (MEcon. Geol., BSc. Hons ARSM), Chief Geologist of the Company. Mr Kolff is a Member of the Australian Institute of Geoscientists (AIG) who has in excess of 20 years' experience in mineral exploration and is a Qualified Person under the AIM Rules. Mr Kolff consents to the inclusion of the information in the form and context in which it appears.

Corporate Overview



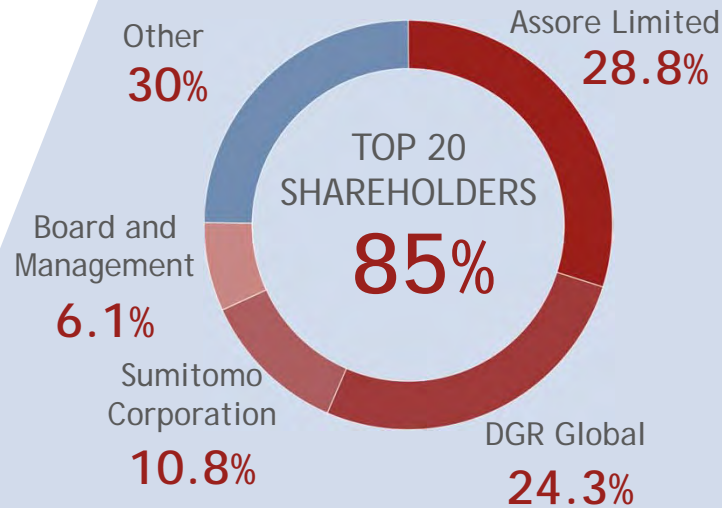
Capital Structure

AIM: IRR

Issued Capital	281.3m
Options	48.35m
Performance Rights	4.05m
Fully-diluted Share Capital	334.3m
Market Capitalisation (22.5p)	£63.4m
Cash Balance (30 Jun 2018)	£5m



Major Shareholders



Directors & Management

- Neil Herbert
Non-Executive Chairman
- Vincent Mascolo
Managing Director & CEO
- Stuart Crow
Non-Executive Director
- Nick Mather
Non-Executive Director
- Alistair McAdam
Non-Executive Director
- Bastiaan van Aswegen
Non-Executive Director
- Ken Tsubaki
Non-Executive Director
- Len Kolff
Chief Operating Officer

Right DNA for Discovery, Diversity & Growth



Explorer

- DGR Global Limited - ASX listed
- Project generator, founder and creator of IronRidge
- Project generation, exploration and discovery expertise



Developer

- Assore Limited -JSE listed
- South African supplier of raw material to the world's steel mills and alloy plants
- South African iron, chrome and manganese mining specialist



Conglomerate

- Sumitomo Corporation
- Global network encompassing over 66 countries
- A global resource, mining, marketing and trading conglomerate

Wealth Creation

Exploration

Discovery

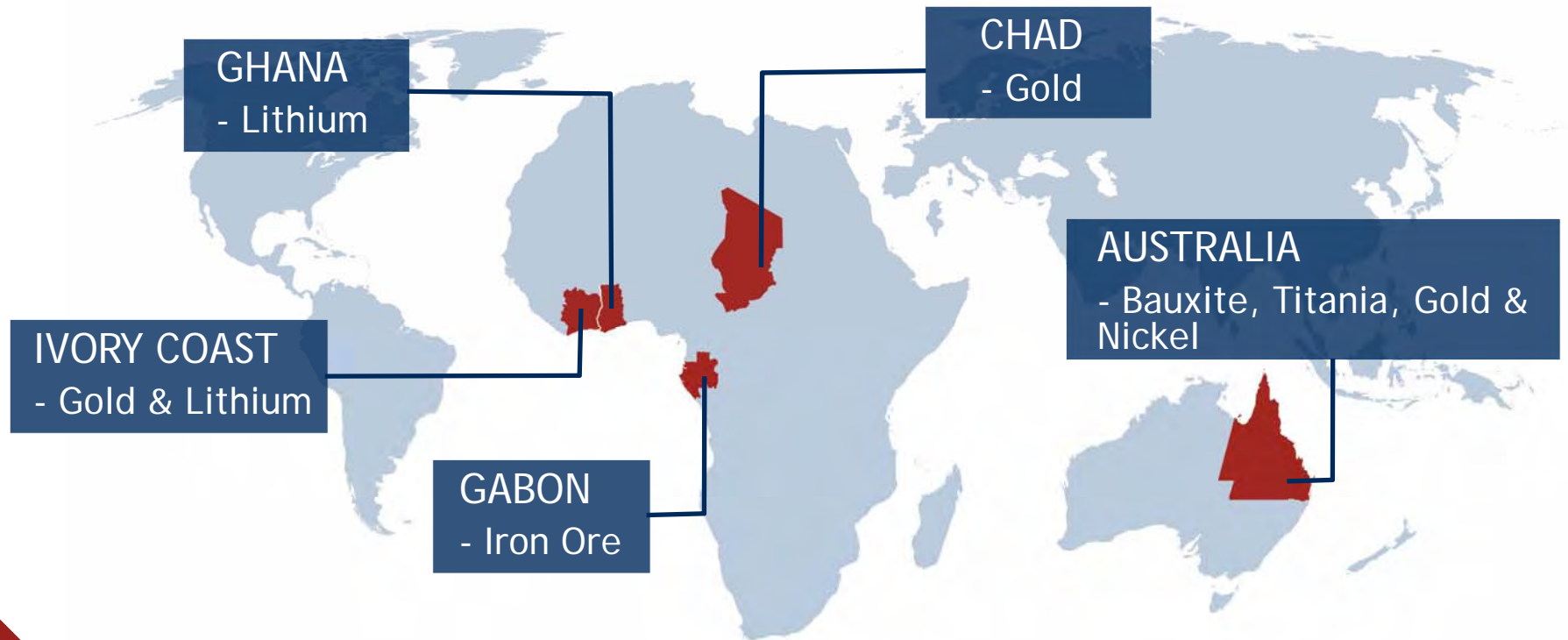
Development

Production

Sales

Africa Footprint - Gold & Lithium

Africa focus - Gold & Lithium



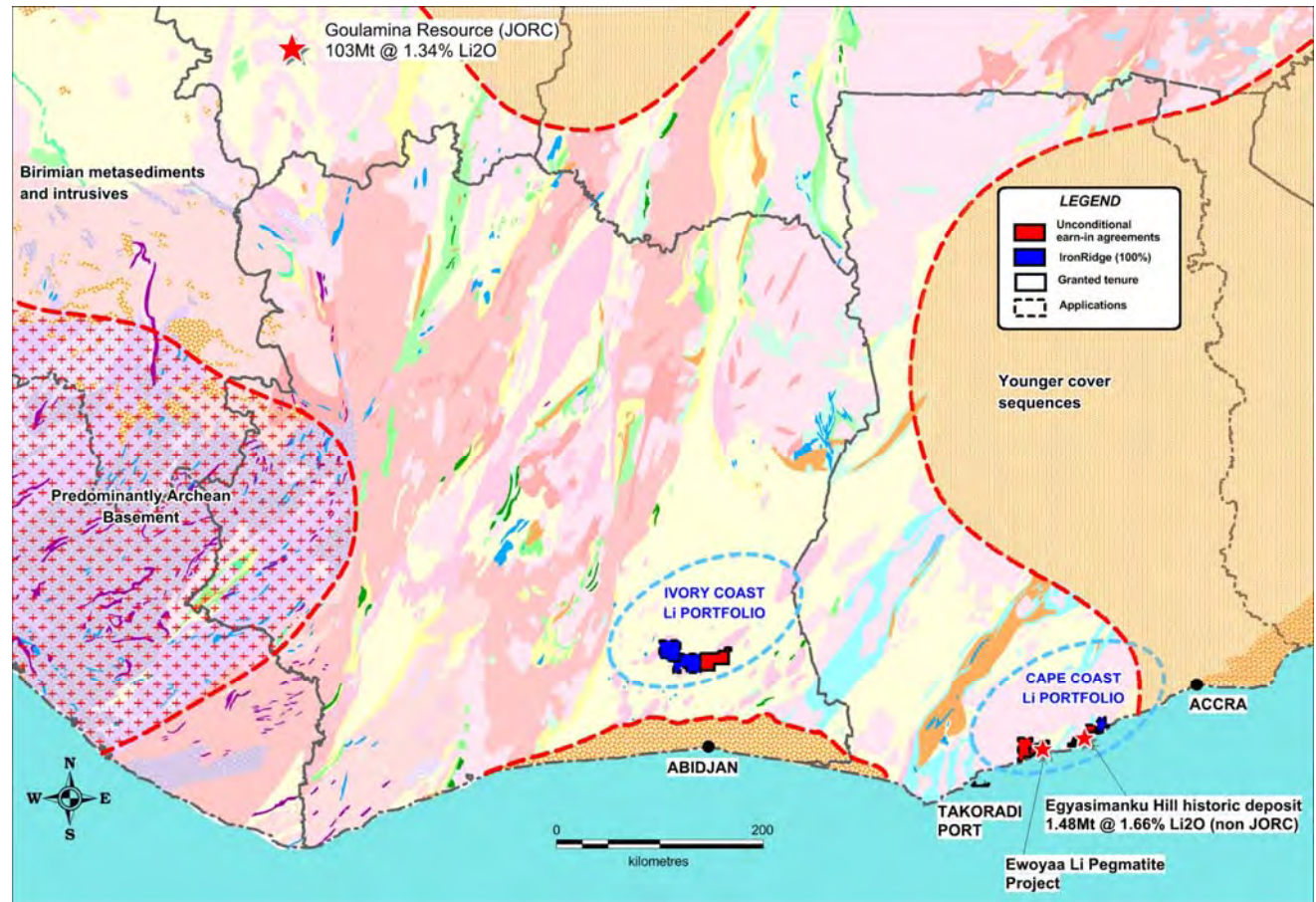
Ongoing review of opportunities

A photograph of a mining site in Ghana. In the foreground, several workers wearing high-visibility vests and hard hats are gathered around a large pile of white and green bags, likely containing lithium pegmatite. To the right, a large yellow tracked vehicle is positioned on a dirt path. In the background, there are rolling green hills under a cloudy sky, with a power line tower visible. A white tent is set up on the left side of the site.

GHANA - Stable Pro-Mining Jurisdiction
High-Grade Lithium Pegmatite Discovery

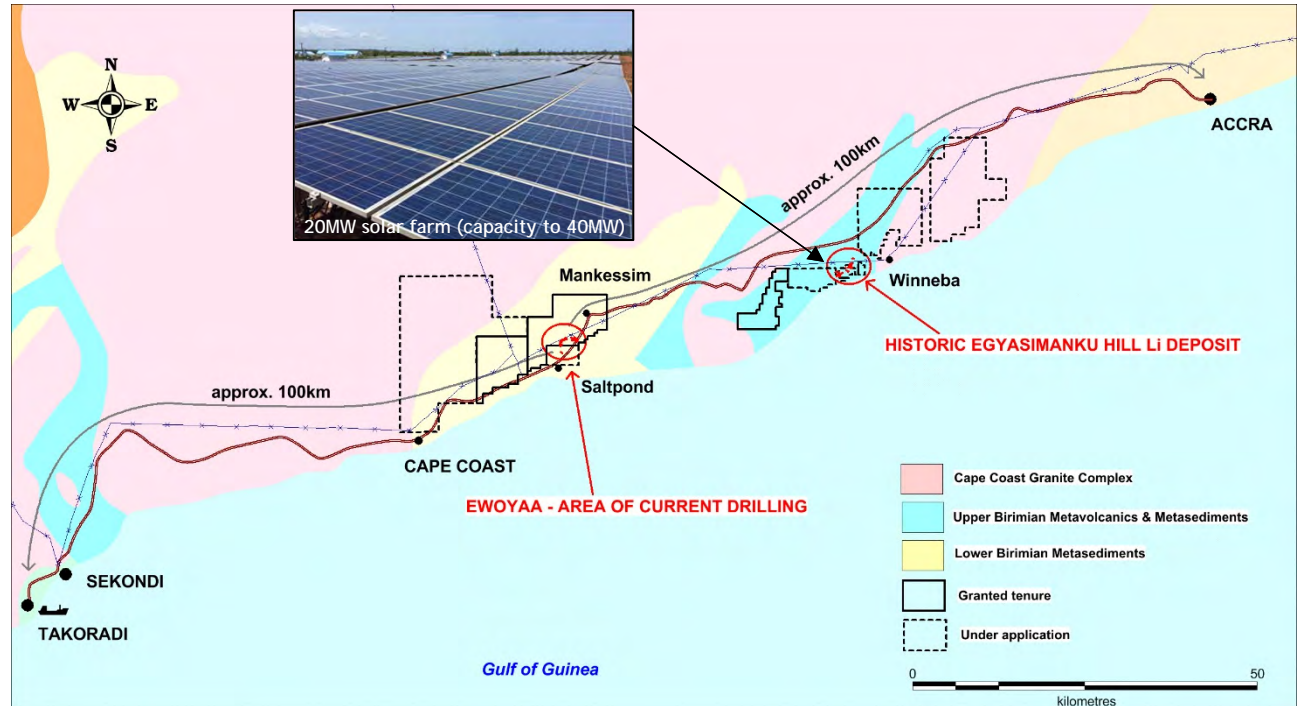
West Africa; New Lithium Frontier

- › Proven big, high-grade Li spodumene pegmatites
- › Significant globally
- › Historical gold focus in the Birimian, yet highly prospective for lithium too
- › Combined 1,855km² portfolio secured



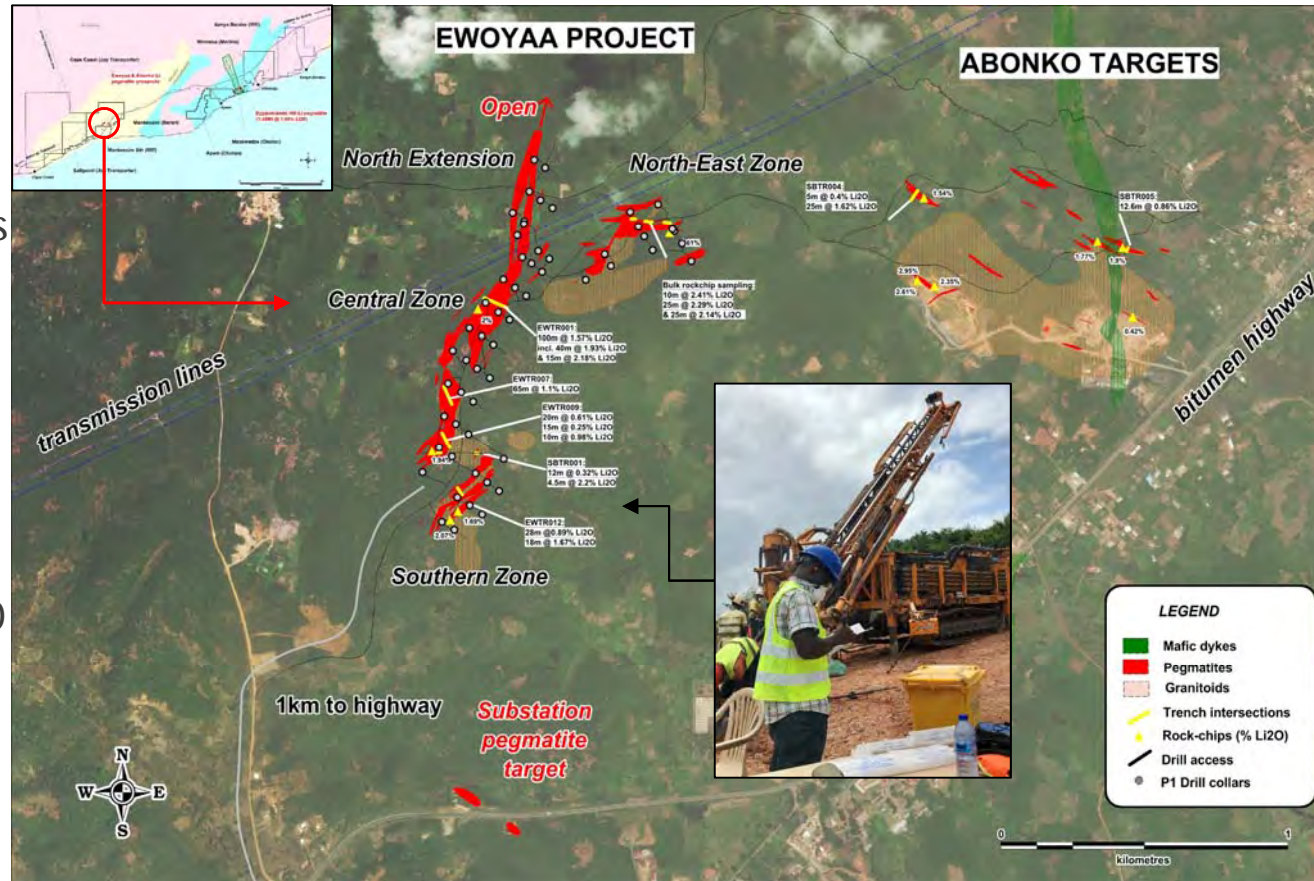
Cape Coast Li Portfolio - Ideal Infrastructure

- › 684km² land package secured via earn-in & application
- › Within 100km of Takoradi port
- › Within 100km of capital Accra
- › Within 1km of a national highway
- › Through going high-voltage transmission lines



Ewoyaa Discovery - First Phase Drilling Completed

- › First phase 8,090m RC drilling programme completed
- › Broad & continuous high-grade Li pegmatites in trenching & rock-chips
- › 100m @ 1.57% Li₂O incl. 40m @ 1.93% and 15m @ 2.18% Li₂O in trenching
- › 10m @ 2.41%, 25m @ 2.29%, 25m @ 2.14% Li₂O in rock chips
- › Coarse spodumene mineralogy at surface

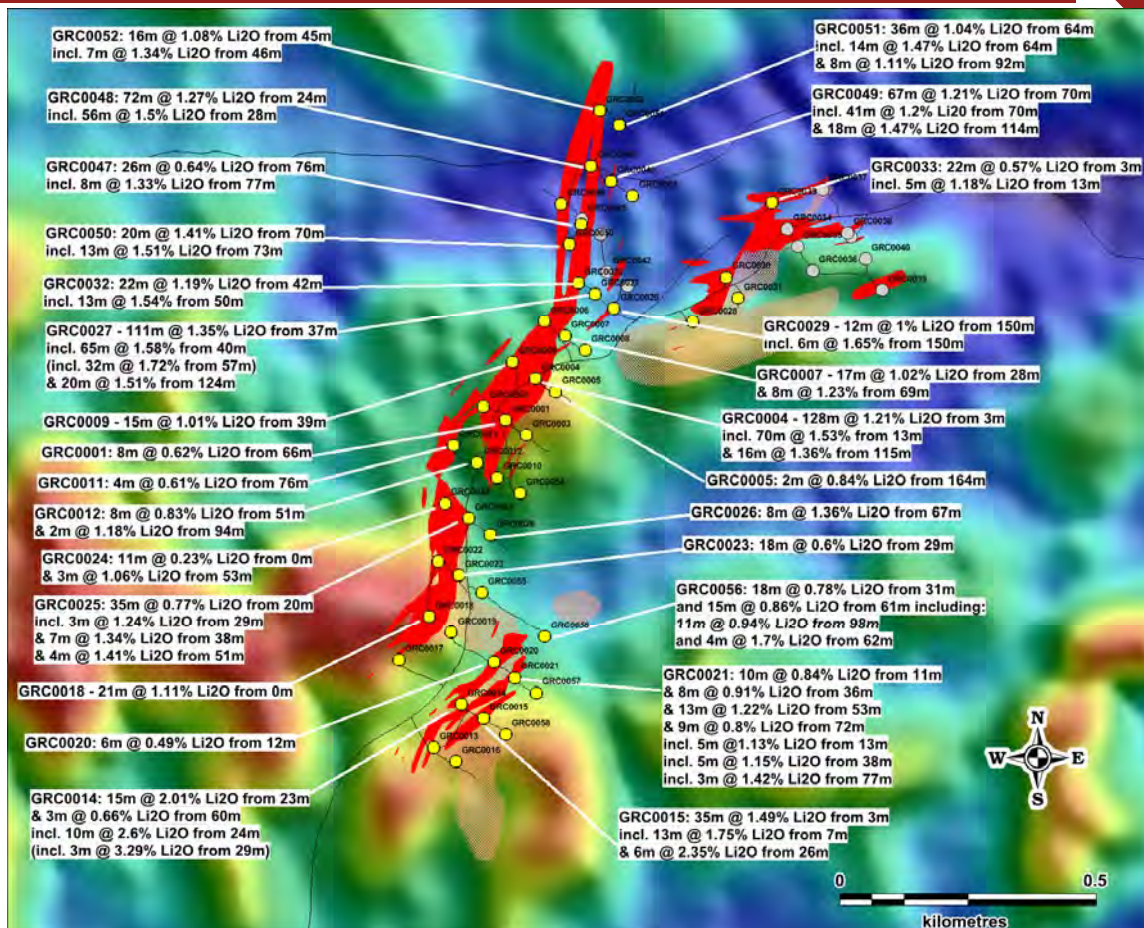


Ewoyaa Discovery - High-Grade Drilling Results

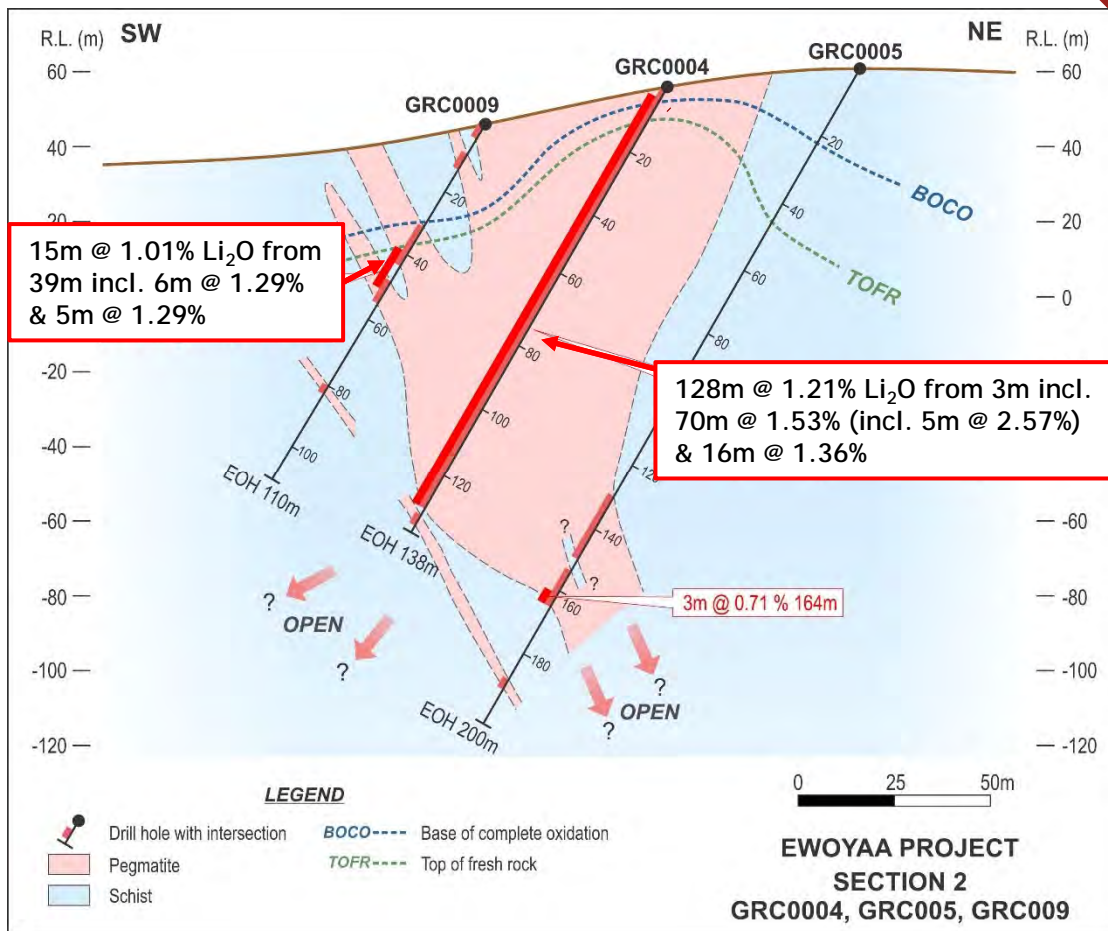
- > 8,090m Phase 1 programme completed
- > Broad & continuous high-grade drilling results including*:

(*0.5% Li₂O cut-off & max 10m internal waste)

- > **128m @ 1.21% Li₂O** from 3m incl.
 - > 70m @ 1.53%
 - > 16m @ 1.36%
- > **111m @ 1.35% Li₂O** from 37m incl.
 - > 65m @ 1.58%
 - > 20m @ 1.51%
- > **72m @ 1.27% Li₂O** from 24m incl.
 - > 56m @ 1.5%
 - > 38m @ 1.65%
- > **67m @ 1.21% Li₂O** from 70m
- > **35m @ 1.49% Li₂O** incl.
 - > 13m @ 1.75%
 - > 6m @ 2.35%

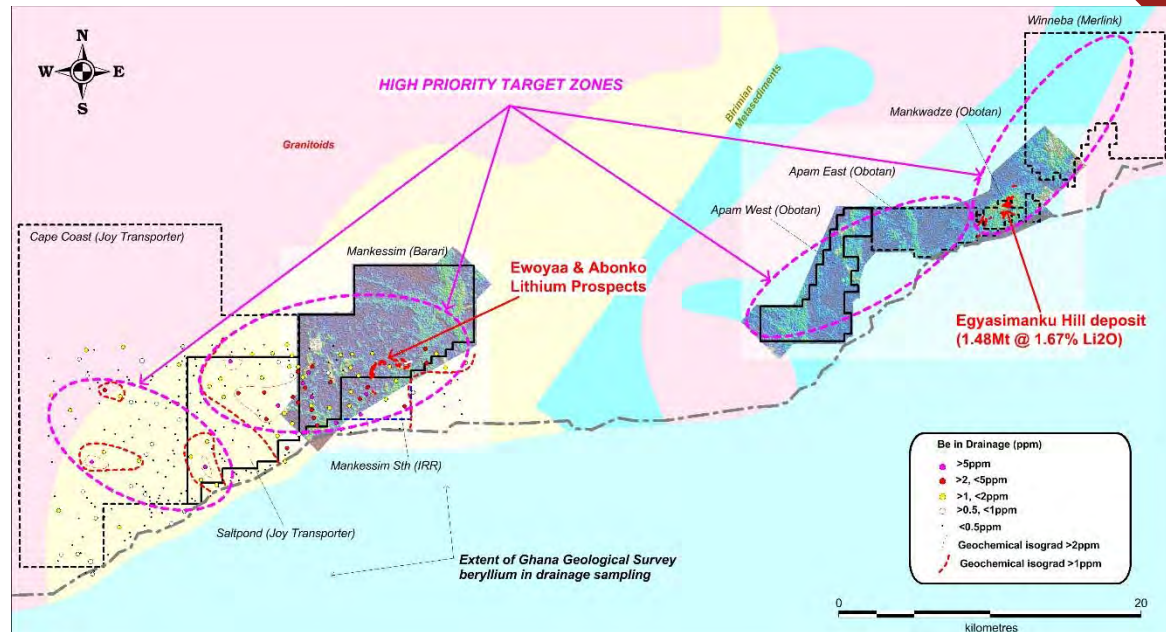


Coarse Spodumene - Broad Widths

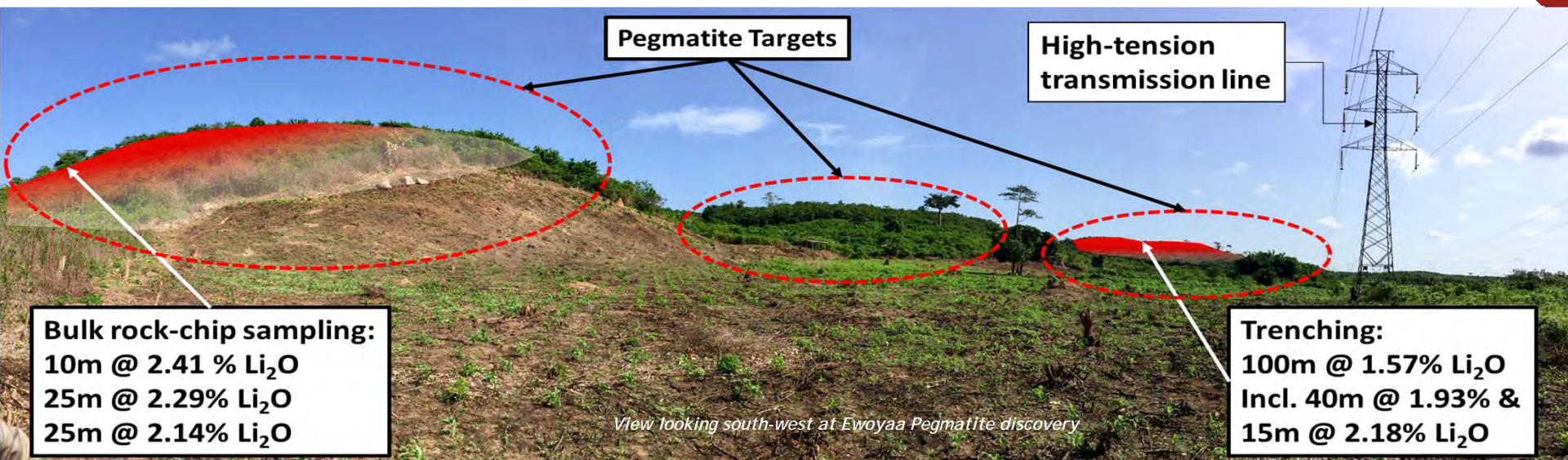


Exploration Upside - Multiple Targets Defined

- › Historical Egyasimanku Hill deposit 1.48Mt @ 1.67% Li₂O (non JORC, deepest hole drilled to 30m)
- › Additional reports of 8 pegmatite bodies; 100-170m long, 10-25m wide & 0.5-2.2% Li₂O
- › High-resolution heli rad-mag survey completed
- › 12,460 Regional soils; PRESS, LIBS & pXRF
- › Multiple target zones defined



Grade, Scale, Mineralogy, Infrastructure & Jurisdiction



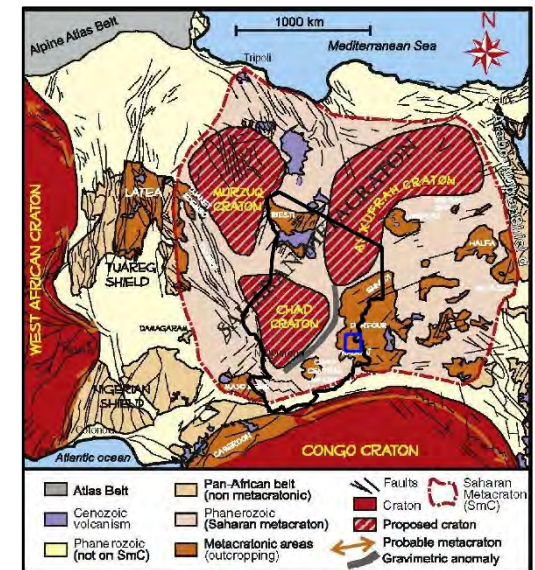
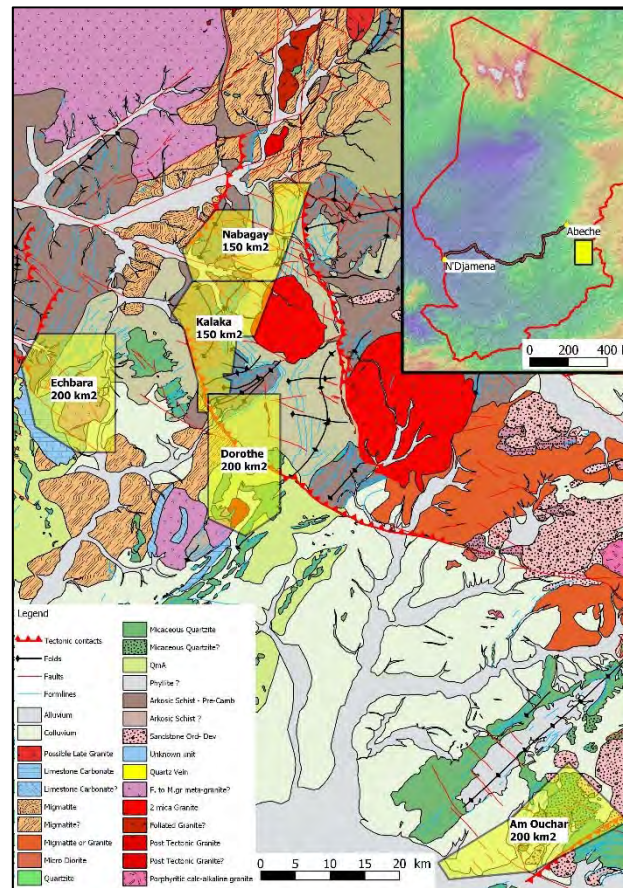
- › High-Grade drilling results, spodumene dominant
- › Just one of multiple untested pegmatites in a rediscovered lithium field
- › Infrastructure; 1km from highway, 100km from port, adjacent to grid power
- › Ghana: low risk, pro-mining jurisdiction



CHAD - 1st Mover Advantage
Province Scale Tenure; High-Grade
Dorothe Discovery

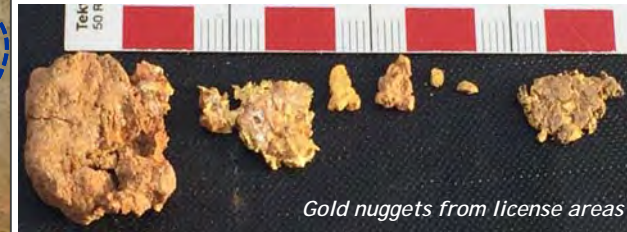
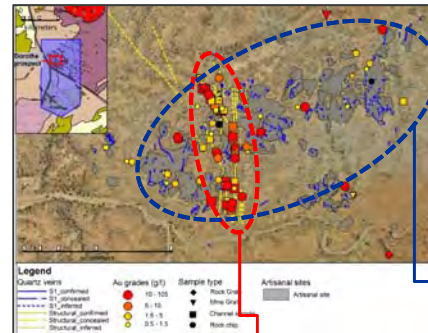
Chad: Large Scale Gold Mineralised Province

- › Licenses covering 900km² in Saharan Metacraton
- › Potential analogue of Intrusion Related Gold Systems - Globally significant
- › Little/no modern-day exploration; oil focus
- › First mover advantage; two advanced gold projects
- › Multiple targets with extensive artisanal gold workings



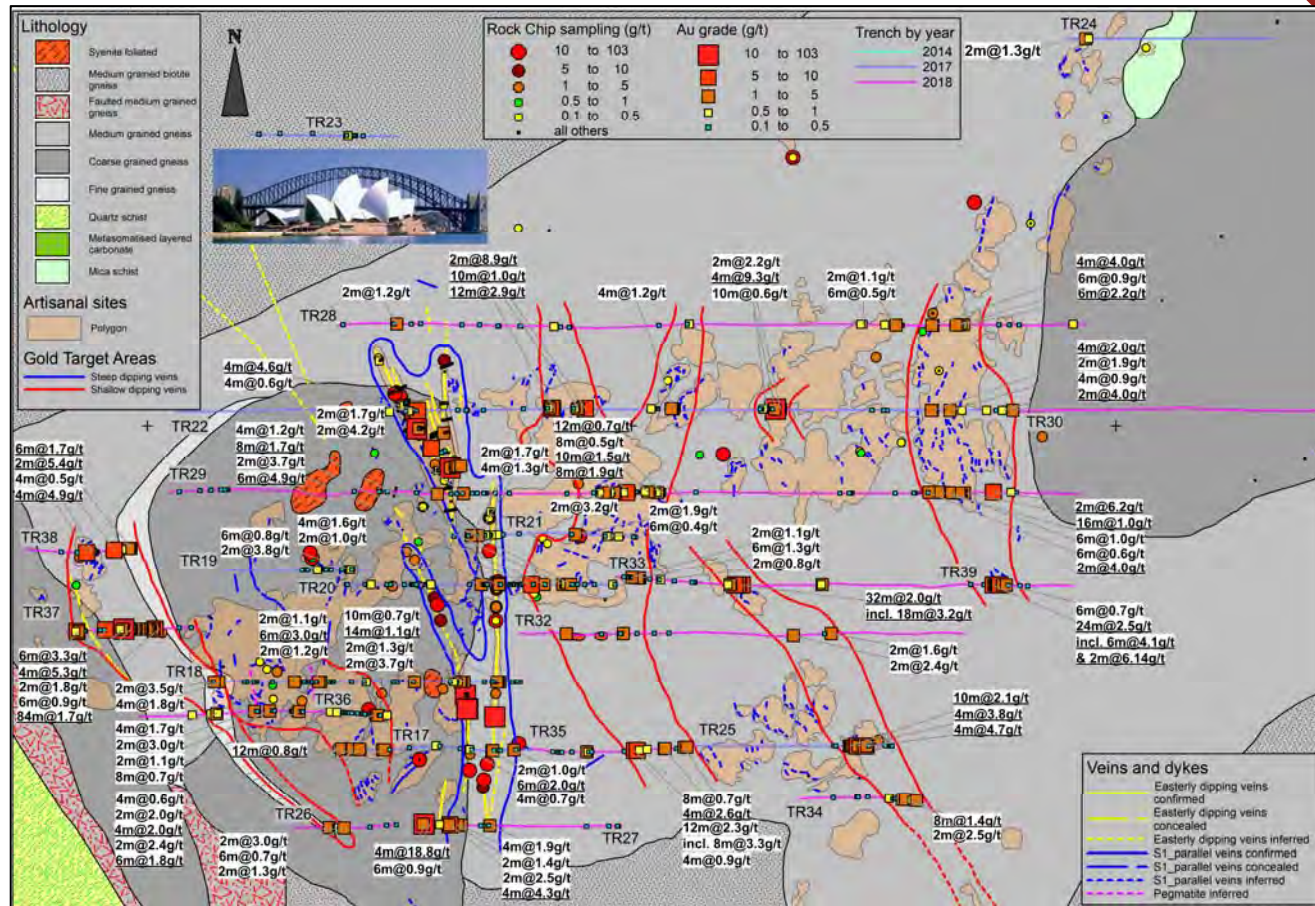
Dorothe Gold Project

- › 200km² exploration license granted
- › Extensive artisanal workings
- › Visible gold in quartz veining with nuggets up to 1cm across
- › Two discrete mineralisation types noted:
 - › Sheeted Veins over 3km x 1km area
 - › Main vein over 1km strike with possible extensions to 3km
- › 14,564m of mechanised trenching completed
- › Regional airmag and soils completed; additional targets defined
- › SRK Perth detailed structural mapping completed; controls on mineralisation better defined



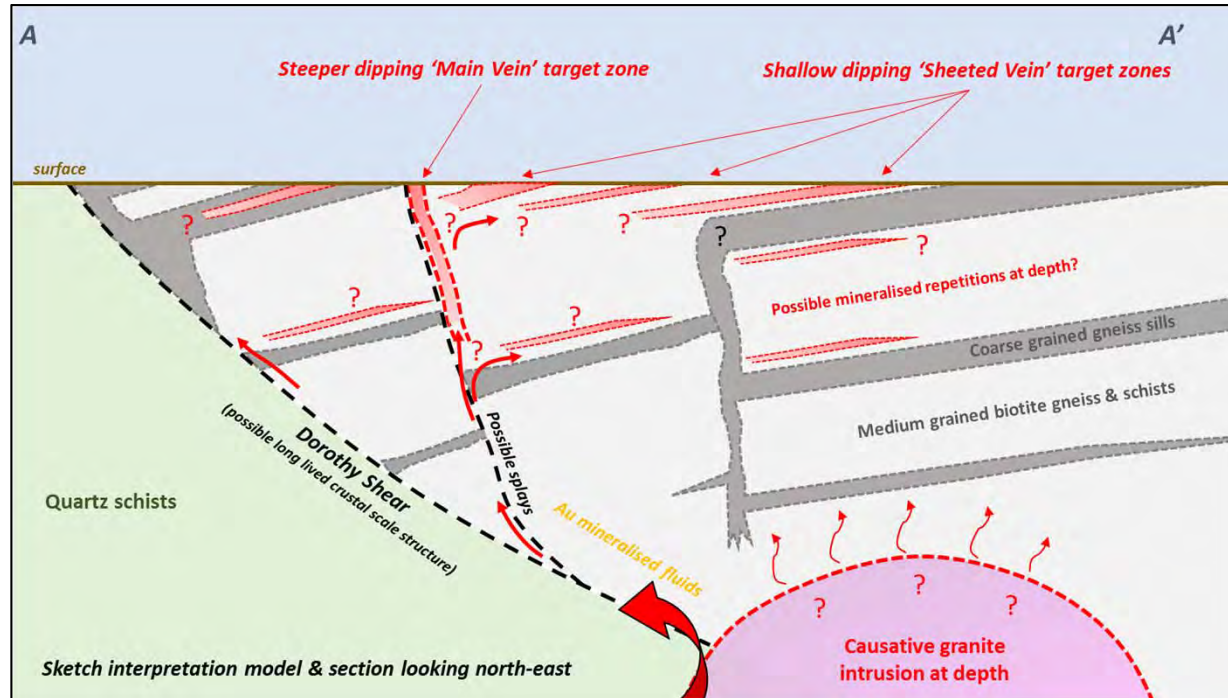
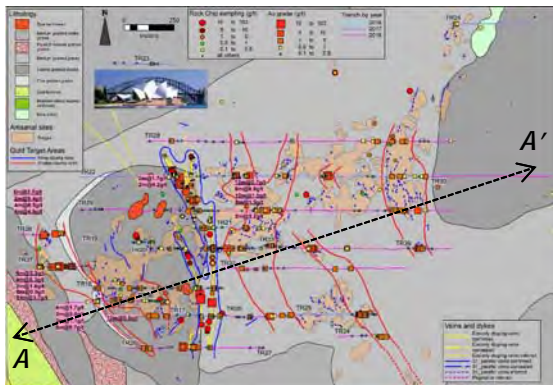
Dorothe: 3km x 1km High-Grade Gold in Trenching Target

- > Large surface mineralised footprint
- > Multiple trench intersections incl:
 - > 84m @ 1.66g/t Au
 - > 4m @ 18.77g/t Au
 - > 32m @ 2.02g/t Au
 - > 24m @ 2.53g/t Au
 - > 12m @ 2.32g/t Au
 - > 4m @ 5.27g/t Au
- > Coherent, large scale anomalies defined:
 - > Sheeted Vein Zones
 - > Main Vein Zone



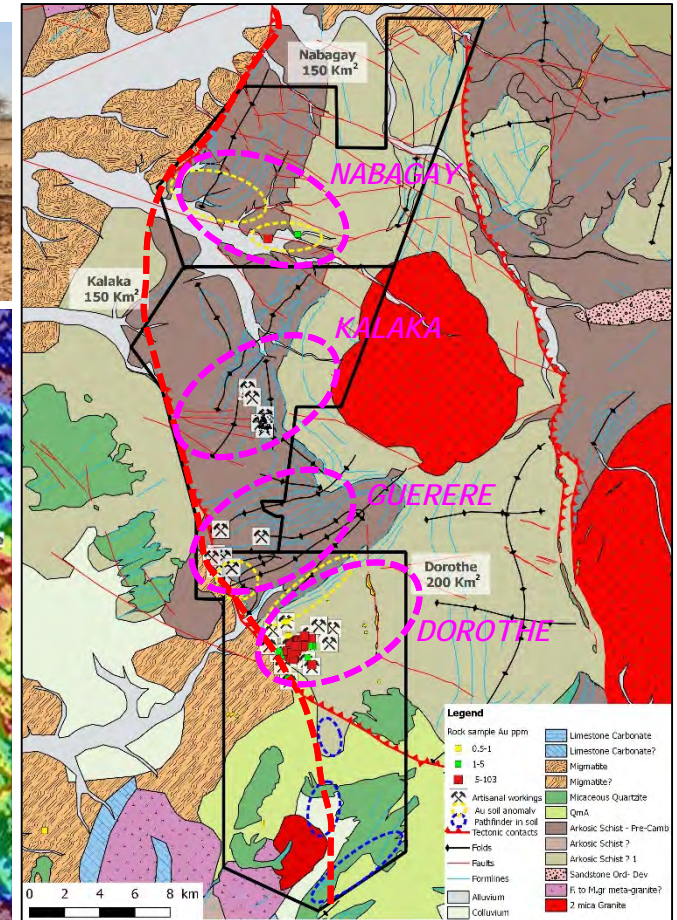
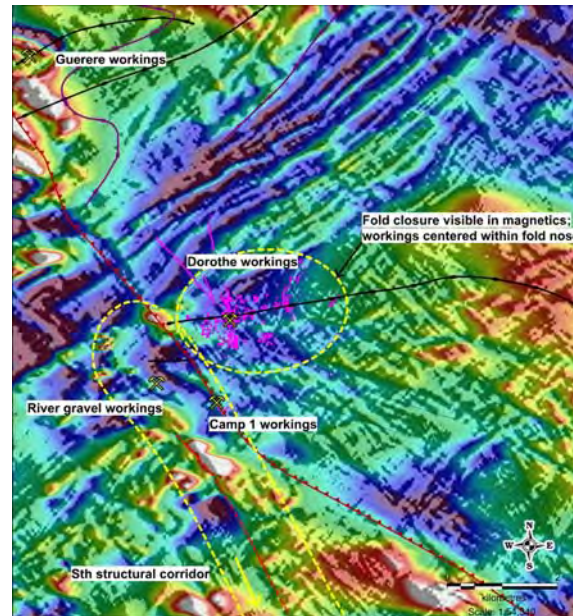
Dorothe: Schematic Cross-Section

- › Steep dipping 'Main Vein' Target
- › Shallow dipping 'Sheeted Vein' targets
- › Possible repetitions at depth



Exploration Upside - Multiple Targets Defined

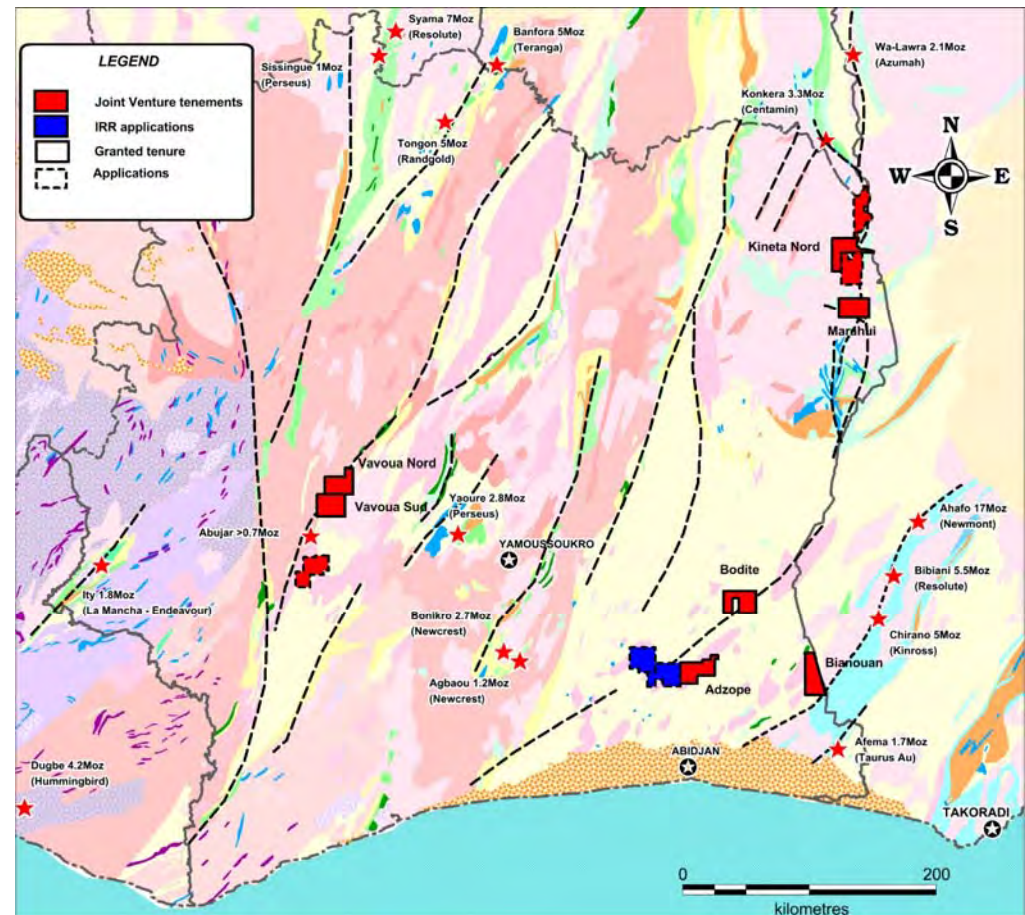
- › Structural repetitions
- › Major Dorothe Shear
- › Gold targets and artisanal workings defined:
 - › Dorothe target
 - › Guerere target
 - › Kalaka target
 - › Nabagay target
- › Sheeted veins and skarns
- › 40km prospective strike secured



Ivory Coast - Gold Pedigree

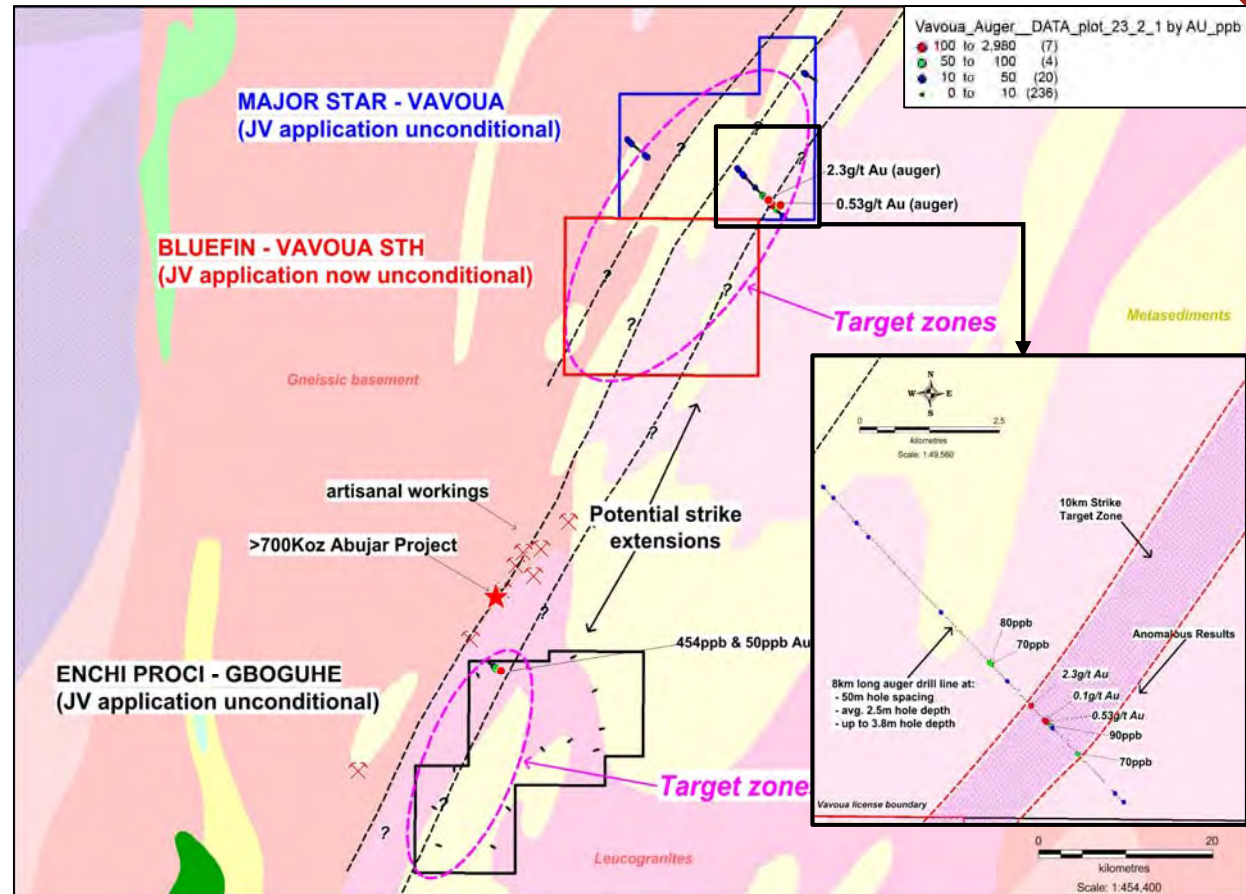
Ivory Coast: Proven Birimian Terrain

- › 3,187km² gold portfolio
- › 1,172km² lithium portfolio
- › Country underlain by prolific Birimian Greenstone Belts
- › Underexplored yet hugely prospective
- › Major regional structures with operating mines; Tongon 5Moz, Yaoure 2.8Moz, Bonikro 2.7Moz
- › Majors & mid-tiers actively exploring (Randgold, Newcrest, Centamin & Resolute)



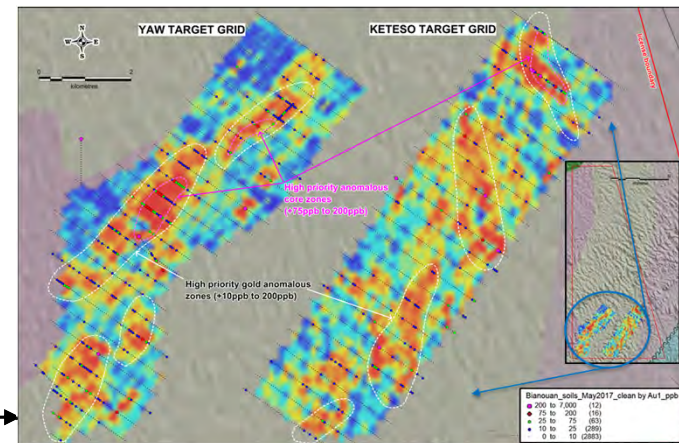
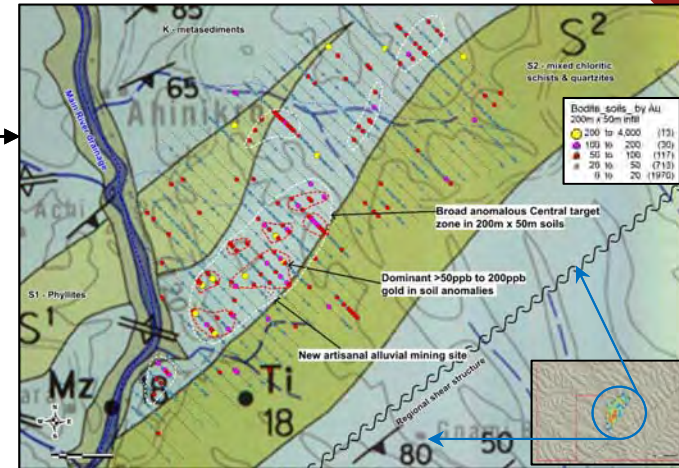
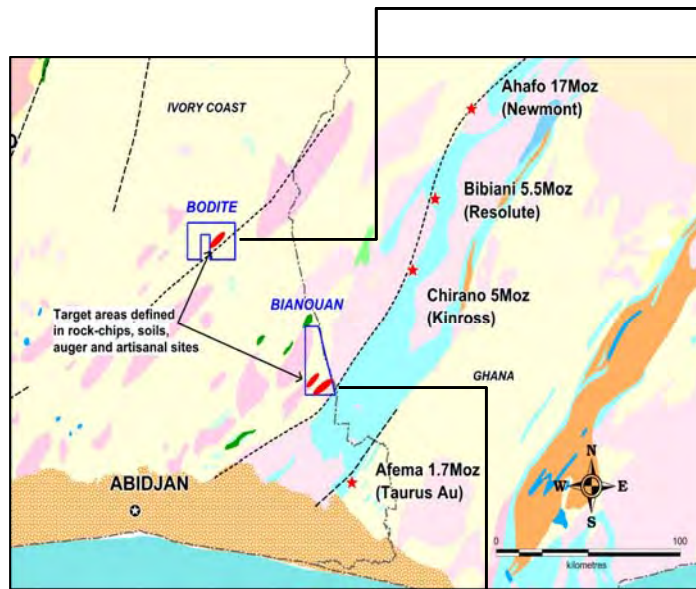
Vavoua Project Area

- > 1,114.6km² ground holding
- > Along strike of significant and growing 700Koz Abujar Project (3rd party, JORC compliant)
- > Highly anomalous reconnaissance auger drilling results:
 - > 2.3g/t Au
 - > 0.53g/t Au
- > High priority target areas defined
- Airmag survey planned



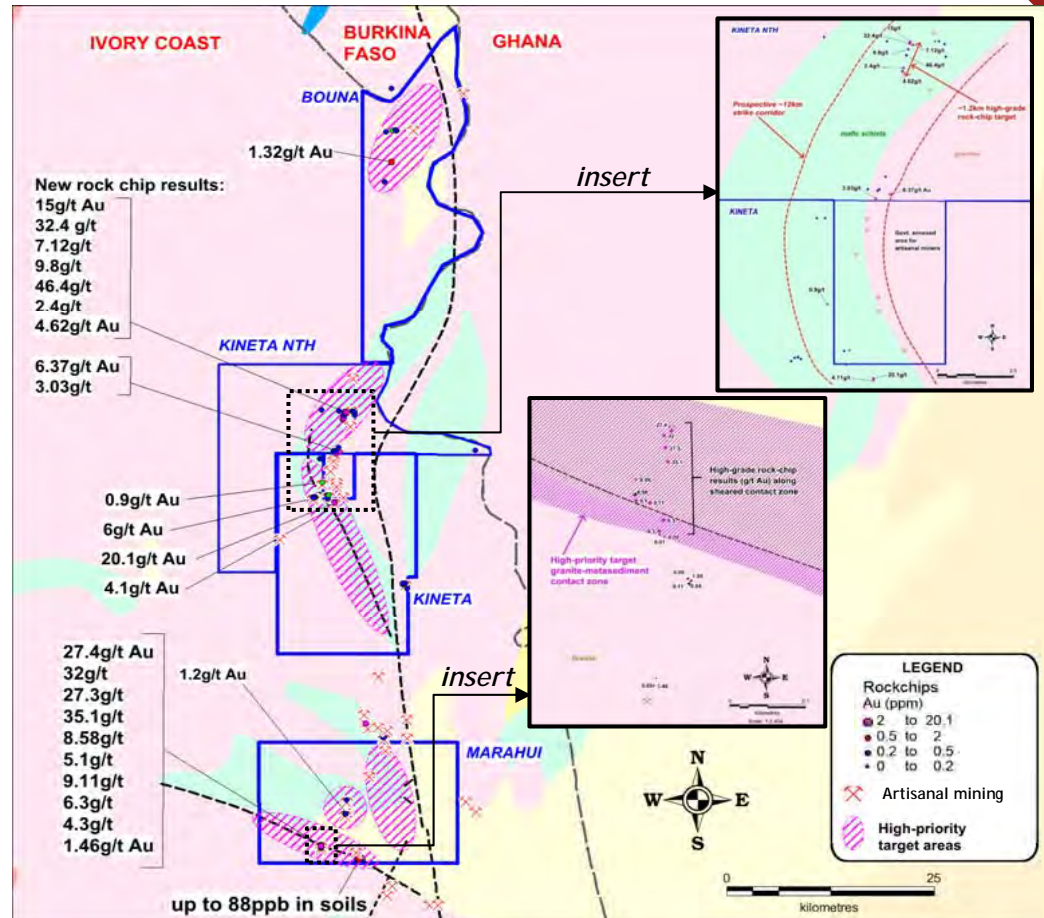
Bianouan & Bodite Gold Projects

- › 540.3km² land holding
- › Along strike from c.17Moz, 5.5Moz and 5Moz deposits
- › Target areas defined in rock chips, soils & artisanal sites
- › Bodite auger drilling underway
- › Bianouan trenching, pitting and extensional soils completed



Kineta Project Area - Contiguous Ground Holding

- › 1,532km² ground holding
- › Artisanal workings defined over 8km strike
- › Along strike from Konkera (3.3Moz) and Wa-Lawra (2.1Moz) deposits
- › High-grade rock-chip results
- › Soil anomaly defined at Kineta North



IronRidge

RESOURCES



IronRidge Resources Ltd (AIM:IRR)
111 Eagle St, Brisbane, QLD Australia
www.ironridgeresources.com.au