



ROCKFIRE
RESOURCES

Investor Presentation

August 2021

LON:ROCK



Disclaimer



The information contained in this confidential document (“**Presentation**”) has been prepared by Rockfire Resources plc (the “**Company**”). It has not been fully verified and is subject to material updating, revision and further amendment. This Presentation has not been approved by an authorised person in accordance with Section 21 of the Financial Services and Markets Act 2000 (“**FSMA**”) and therefore it is being delivered for information purposes only to a very limited number of persons and companies who are persons who have professional experience in matters relating to investments and who fall within the category of persons set out in Article 19 of the Financial Services and Markets Act 2000 (Financial Promotion) Order 2005 (the “**Order**”) or are high net worth companies or other persons described in Article 49(2) of the Order or are otherwise permitted to receive it. Any other person who receives this Presentation should not rely on it. By accepting this Presentation and not immediately returning it, the recipient represents and warrants that they are a person who falls within the above description of persons entitled to receive the Presentation. This Presentation is not to be disclosed to any other person or used for any other purpose.

Please note that the information in this Presentation has yet to be announced or otherwise made public and as such constitutes inside information for the purposes of Article 14 of the Market Abuse Regulation (596/2014/EU) (“MAR**”) and the Criminal Justice Act 1993. You should not therefore deal in any way in these securities of the Company until after the formal release of an announcement by the Company as to do so may result in civil and/or criminal liability.**

The publication, distribution or communication of the Presentation is taking place for the purpose of a “market sounding” in accordance with MAR. Recipients of the Presentation have been requested to, and have confirmed that: (a) where the market sounding is being conducted by recorded telephone lines or audio or video recording, they have agreed to the recording of any such communication; (b) they are the persons trusted by the potential investor to receive the market sounding; and (c) they have agreed to receive the market sounding in the knowledge that they will be receiving information that the Company considers to be inside information for the purposes of Article 11(5)(a) of MAR and that, in accordance with Article 11(7) of MAR, they are required to assess for themselves whether they are in possession of inside information and when they cease to be in possession of inside information.

Recipients of the Presentation are: (a) prohibited from using, or attempting to use, the information by acquiring or disposing of, directly or indirectly, financial instruments relating to that information for either their own account or that of a third party (Article 11(5)(b) MAR); (b) prohibited from using, or attempting to use, the information by cancelling or amending an order which has already been placed concerning a financial instrument to which the information relates (Article 11(5)(c) MAR); and (c) obliged to keep the information confidential (Article 11(5)(d) MAR).

Allenby Capital Limited (“**Allenby**”), which is authorised and regulated by the Financial Conduct Authority, is acting as the nominated adviser and broker to the Company and not acting for anyone else other than the Company in connection with the proposals contained in this Presentation. Accordingly, recipients should note that Allenby is neither advising nor treating a client and any other person and will not be responsible to anyone other than the Company for providing the protections afforded to clients of Allenby nor for providing advice in relation to the proposals contained in this Presentation.

While the information contained herein has been prepared in good faith, none of the Company, Allenby nor any of their respective shareholders, directors, officers, agents, employees or advisers give, have given or have authority to give, any representations or warranties (express or implied) as to, or in relation to, the accuracy, reliability or completeness of the information in this Presentation, or any revision thereof, or of any other written or oral information made or to be made available to any interested party or its advisers (all such information being referred to as “**Information**”) and liability therefor is expressly disclaimed. Accordingly, none of the Company, Allenby, nor any of their respective shareholders, directors, officers, agents, employees or advisers take any responsibility for, or will accept any liability whether direct or indirect, express or implied, contractual, tortious, statutory or otherwise, in respect of, the accuracy or completeness of the Information or for any of the opinions contained herein or for any errors, omissions or misstatements or for any loss, howsoever arising, from the use of this Presentation.

This Presentation may contain forward-looking statements that involve substantial risks and uncertainties, and actual results and developments may differ materially from those expressed or implied by these statements. These forward-looking statements are statements regarding the Company’s intentions, beliefs or current expectations concerning, among other things, the Company’s results of operations, financial condition, prospects, growth, strategies and the industry in which the Company operates. By their nature, forward-looking statements involve risks and uncertainties because they relate to events and depend on circumstances that may or may not occur in the future. These forward-looking statements speak only as of the date of this Presentation and the Company does not undertake any obligation to publicly release any revision to these forward-looking statements to reflect events or circumstances after the date of this Presentation.

Neither the issue of this Presentation nor any part of its contents is to be taken as any form of commitment on the part of the Company to proceed with any transaction and the right is reserved to terminate any discussions or negotiations with any prospective investors. In no circumstances will the Company be responsible for any costs, losses or expenses incurred in connection with any appraisal or investigation of the Company. In furnishing this Presentation, the Company does not undertake or agree to any obligation to provide the recipient with access to any additional information or to update this Presentation or to correct any inaccuracies in, or omissions from, this Presentation which may become apparent.

This Presentation should not be considered as the giving of investment advice by the Company, Allenby or any of their respective shareholders, directors, officers, agents, employees or advisers. In particular, this Presentation does not constitute an offer or invitation to subscribe for or purchase any securities and neither this Presentation nor anything contained herein shall form the basis of any contract or commitment whatsoever. Each party to whom this Presentation is made available must make its own independent assessment of the Company after making such investigations and taking such advice as may be deemed necessary. In particular, any estimates or projections or opinions contained herein necessarily involve significant elements of subjective judgment, analysis and assumptions and each recipient should satisfy itself in relation to such matters.

Neither this Presentation nor any copy of it may be (a) taken or transmitted into Australia, Canada, Japan, the Republic of Ireland, the Republic of South Africa or the United States of America (each a “**Restricted Territory**”), the territories or possessions; (b) distributed to any U.S. person (as defined in Regulation S under the United States Securities Act of 1933 (as amended)) or (c) distributed to any individual outside a Restricted Territory who is a resident thereof in any such case for the purpose of an offer for sale or solicitation or invitation to buy or subscribe any securities or in the context where its distribution may be construed as such offer, solicitation or invitation, in any such case except in compliance with any applicable exemption. The distribution of this document to persons subject to other jurisdictions may be restricted by law and persons into whose possession this document comes should inform themselves about, and observe, any such restrictions. Any failure to comply with these restrictions may constitute a violation of the laws of the relevant jurisdiction.

Solely for the purposes of the product governance requirements contained within: (a) EUD Directive 2014/65/EU on markets in financial instruments, as amended (“**MiFID II**”); (b) Articles 9 and 10 of Commission Delegated Directive (EU) 2017/593 supplementing MiFID II; and (c) local implementing measures (together, the “**MiFID II Product Governance Requirements**”), and disclaiming all and any liability, whether arising in tort, contract or otherwise, which any “manufacturer” (for the purposes of the MiFID II Product Governance Requirements) may otherwise have with respect thereto, the shares the subject of the proposed placing of shares in the Company (the “**Fundraising**”) have been subject to a product approval process, which has determined that such securities are: (i) compatible with an end target market of retail investors and investors who meet the criteria of professional clients and eligible counterparties, each as defined in MiFID II; and (ii) eligible for distribution through all distribution channels as are permitted by MiFID II (the “**Target Market Assessment**”). Notwithstanding the Target Market Assessment, distributors should note that: the price of the shares the subject of the Fundraising may decline and investors could lose all or part of their investment; the shares of Ferno guarantee income and capital protection; and an investment in the shares is compatible only with investors who do not need a guaranteed income or capital protection, who (either alone or in conjunction with an appropriate financial or other adviser) are capable of evaluating the merits and risks of such an investment and who have sufficient resources to be able to bear any loss that may result therefrom. The Target Market Assessment is without prejudice to the requirements of any contractual, legal or regulatory selling restrictions in relation to the Fundraising. Furthermore, it is noted that, notwithstanding the Target Market Assessment, Allenby will only procure investors who meet the criteria of professional clients and eligible counterparties. For the avoidance of doubt, the Target Market Assessment does not constitute: (a) an assessment of suitability or appropriateness for the purposes of MiFID II; or (b) a recommendation to any investor or group of investors to invest in, or purchase, or take any other action whatsoever with respect to the shares the subject of the Fundraising. Each distributor is responsible for undertaking its own target market assessment in respect of the shares and determining appropriate distribution channels.

Rockfire

Exploring for gold and copper in Queensland, Australia



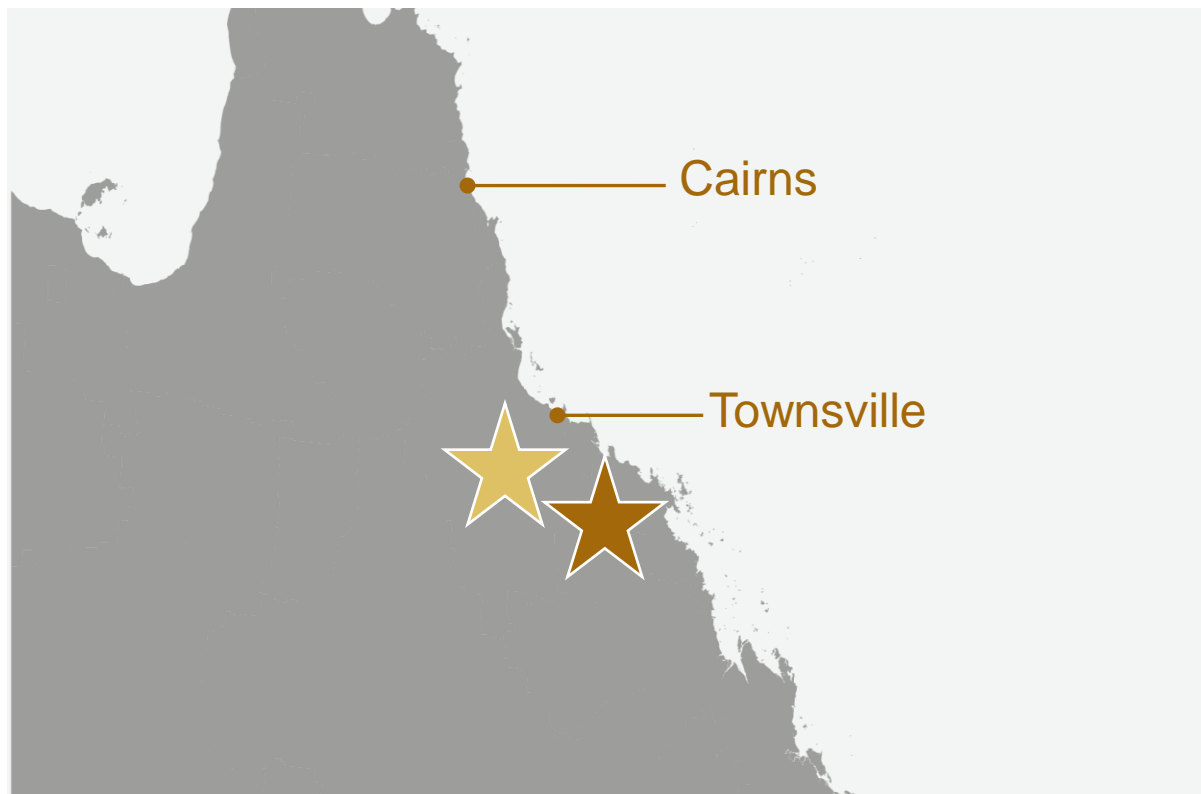
100% owned assets

Lighthouse (gold)
Copperhead (copper)
Copper Dome (copper)

2nd ranked most attractive
investment destination globally
(Fraser Institute, 2019)

3 gold processing plants
within 50 km trucking distance of
Lighthouse

2 large-scale porphyry copper
projects, both listed in the USGS
Global Mineral Assessment



Board & Management



Gordon Hart

Chairman
(GAICD)
**Equities,
Finance**
(+35 years' experience)



David Price

Managing Director / CEO
(B.Sc., FAusIMM)
Geologist, Executive
(+30 years' experience)



Ian Staunton

Director
Audit, Corporate Finance
(+40 years' experience)



Nicholas Walley

Director
**Business,
Investor**
(+35 years' experience)



Patrick Elliott

Director
**Mergers,
Acquisitions,
Investor**
(+35 years' experience)



Graeme Hogan

Company Secretary
**Accounting,
Secretarial,
Governance**
(+30 years' experience)

Corporate snapshot



AIM Code: ROCK

Ordinary Shares 1,081,637,722

Market Cap (1.0p) £10.8M

Percentage of shares not in public hands 9.83 %

> 3% Shareholders and Board	Shares	%
Nicholas Walley *	59,000,000	5.45
Michael Somerset-Leeke	49,101,126	4.54
David W Price *	13,850,000	1.28
Edward Fry *	13,000,000	1.20
Patrick Elliott *	11,641,420	1.08
Gordon Hart *	8,823,530	0.82
* directors and management shareholdings total		9.83



Queensland, Australia



6%

of Australia's
annual gold
production

**\$127.4m
(£71.3m)**

expenditure on gold
and copper
exploration annually

**14 operating
gold mines**

producing up to 16.4
T gold annually
(527,000 Oz)

**13 operating
copper mines**

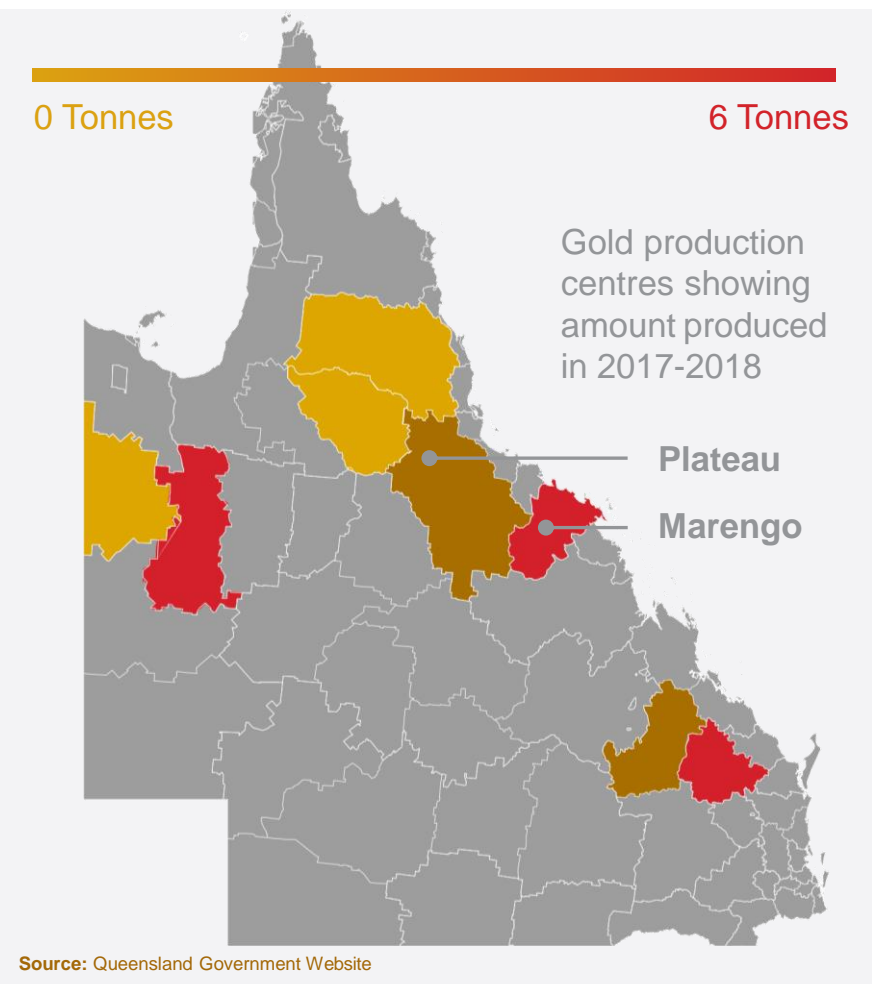
producing up to
245,000T per year

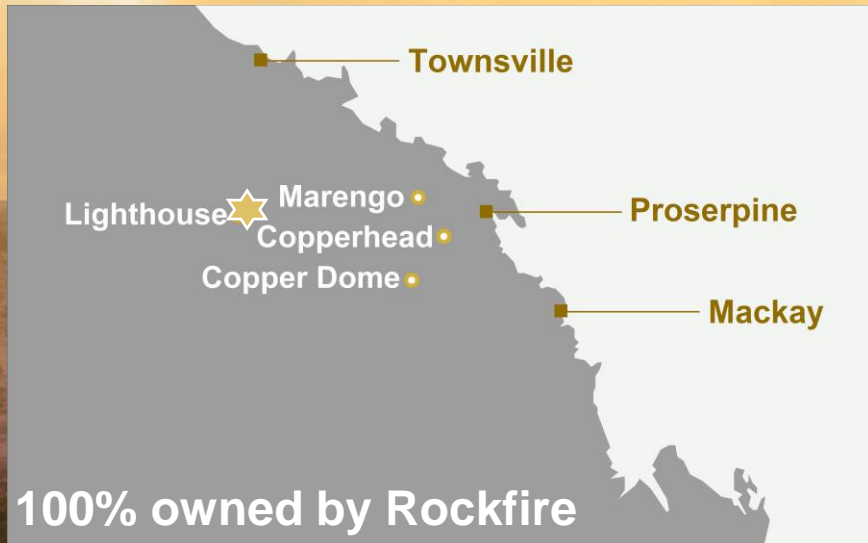
995.3 tonnes

of defined gold
(32 million Oz)
in Resources &
Reserves

17.67 MT

of defined copper
Resources &
Reserves





Lighthouse



**JORC Indicated and Inferred Resource (Jan 2021)
using a 0.5 g/t Au low-grade cut-off:**

3.9 MT @ 1.1 g/t Au and 6.4 g/t Ag

131,302 Oz. of gold and 800,000 Oz. of silver

Lighthouse



Explored by large companies including Kennecott, Penarroya, Esso Australia, Battle Mountain, CRA, WMC, Aberfoyle, Plutonic, Newcrest

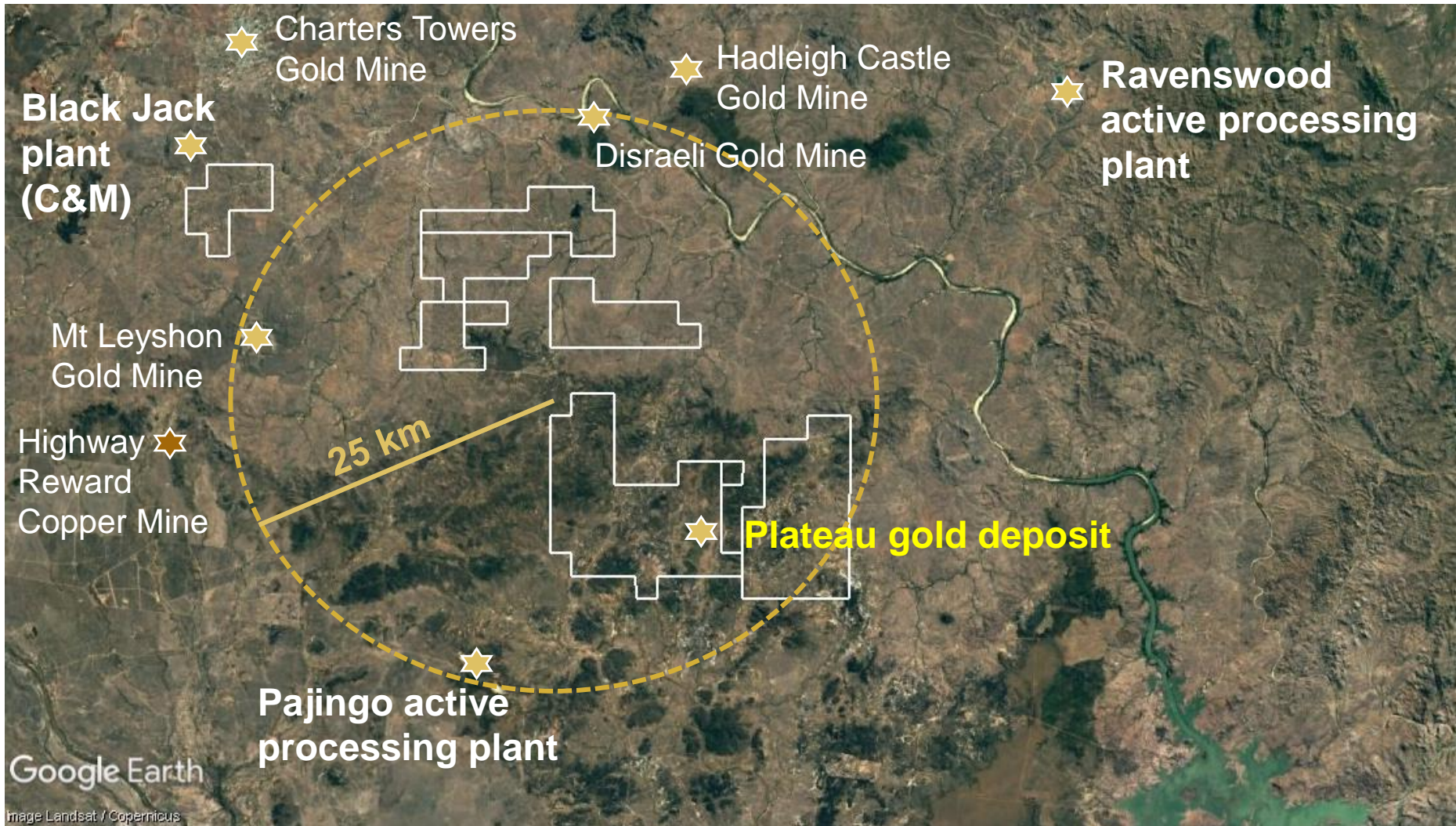
15 prospects identified within the licence, including breccia-hosted, IRGS and structurally-controlled gold and silver deposits

27 km by road from the nearest, operating gold plant

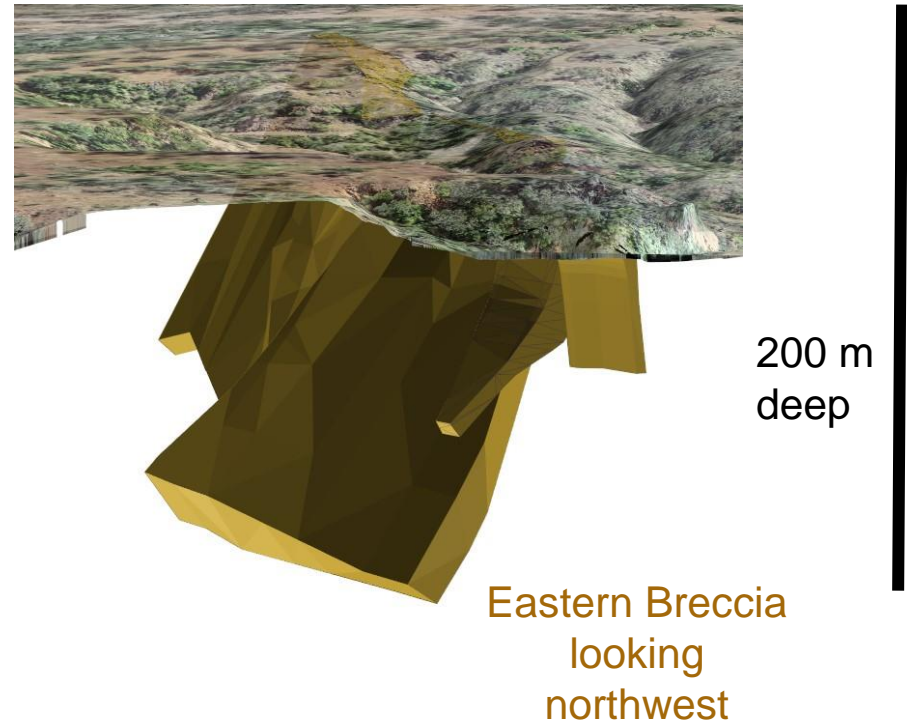
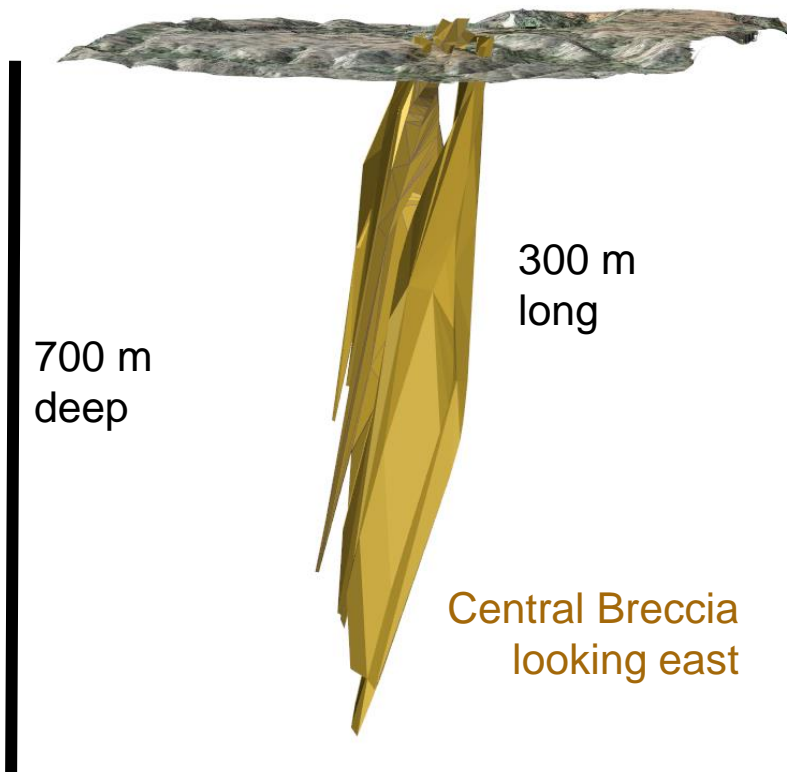
Prospective for gold, silver, copper and zinc



Plateau – between multi-million-ounce gold mines



Plateau Gold Deposit – JORC Resource defined



Using a 0.2 g/t Au low-grade cut-off:

11.4 MT @ 0.6 g/t Au and 4.0 g/t Ag
208,278 Oz. of gold and 1,500,000 Oz. of silver



Using a 0.5 g/t Au low-grade cut-off:

3.9 MT @ 1.1 g/t Au and 6.4 g/t Ag
131,302 Oz. of gold and 800,000 Oz. of silver

Plateau Gold Deposit – Open Pit Potential



Open pit potential

for low-medium grade gold down to 70 m depth.

CENTRAL BRECCIA

4 m @ 2.6 g/t Au (PL004)
4 m @ 3.9 g/t Au (PLP145)
22 m @ 1.8 g/t Au (BPL002)
6 m @ 4.10 g/t Au (BPL013)
12 m @ 1.2 g/t Au (BPL014)
12 m @ 1.3 g/t Au (BPL015)
10 m @ 2.0 g/t Au (BPL025)
6 m @ 1.2 g/t Au (BPL029)
32 m @ 1.7 g/t Au (BPL034)
9 m @ 2.2 g/t Au (BPL035)

Top 100m:

1.4 MT @ 1.2 g/t Au and 8.8 g/t Ag
53,336 Oz. of gold and 390,000 Oz. of silver

EASTERN BRECCIA

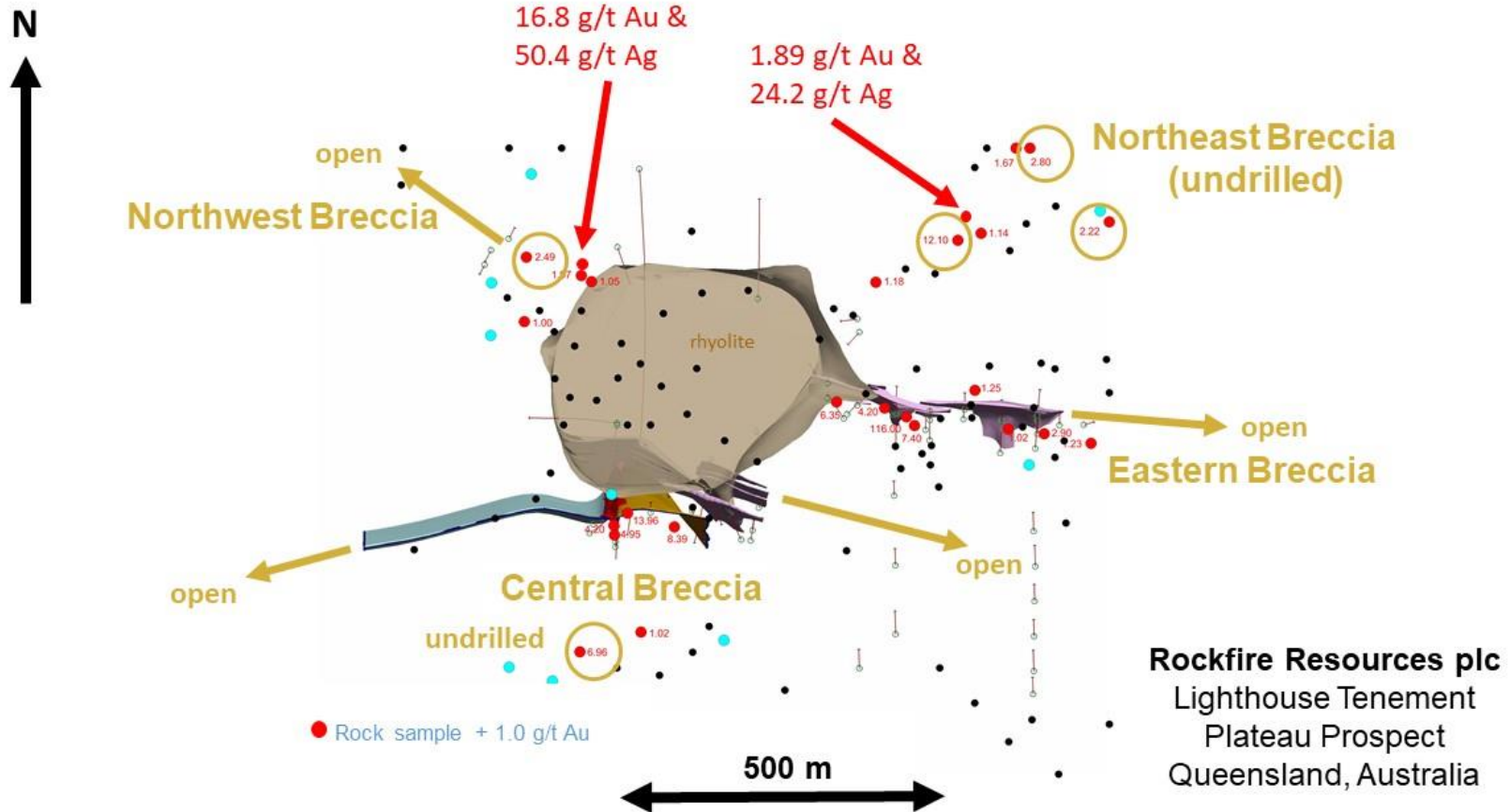
10 m @ 1.83 g/t Au (PL103)
11 m @ 2.04 g/t Au (PLP127)
15 m @ 1.34 g/t Au (PLP128)
10 m @ 2.06 g/t Au (PLP129)
11 m @ 4.58 g/t Au (PLP130)
16 m @ 1.63 g/t Au (PLP138)
18 m @ 1.00 g/t Au (BPL004)
10 m @ 1.90 g/t Au (BPL008)
15 m @ 1.10 g/t Au (BPL018)
30 m @ 1.20 g/t Au (BPL020)
18 m @ 1.30 g/t Au (BPL021)
22 m @ 1.00 g/t Au (BPL022)



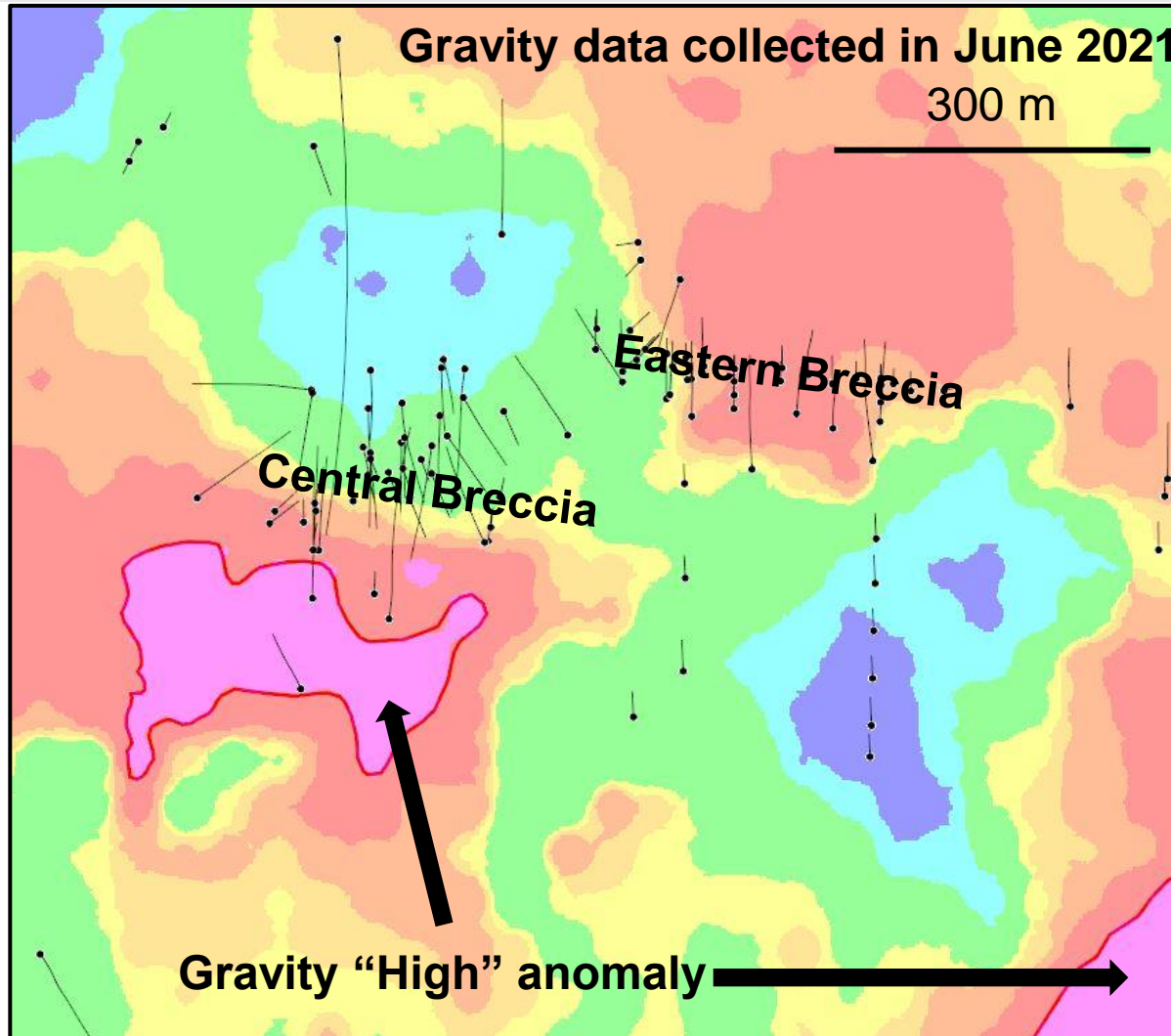
Net positive cash flow indicated

- Net positive cash flow ranging from AUD \$6.8m to AUD \$19.4m (GBP £3.7m to GBP £10.7m)
- Multiple targets within the proposed pit outlines are yet to be drilled. Numerous opportunities to increase gold ounces with additional shallow drilling.
- Only the top 100 m incorporated into the study, yet gold up to 16.9 g/t Au has been intersected approximately 400 m below surface.
- Assumes utilisation of one of the nearby existing processing facilities. Capital costs are deemed minimal.
- Average mined grades range between 1.26 g/t Au and 1.94 g/t Au from within the optimised pit outlines.
- A spot gold price of AUD\$ 2,220 (US\$ 1,718) per ounce used and the study excludes any contribution from recovery of silver. (As @ 23/8/2021, the spot price of gold is US\$ 1,788 per ounce).

Plateau Gold Deposit – Expansion potential



Plateau Gold Deposit – Expansion potential



Lighthouse – tenement-wide, high grade prospects



Jeddah

Continuous rock samples:

10 m @ 1.68 g/t Au

Bell Rock

High grade rock samples:

23.4 g/t Au, 7.3 g/t Au, 5.8 g/t Au

Split Rock

High-grade rock samples:

3.5 g/t Au, 38 g/t Ag, 11.3 % Cu

Double Event

Drilling results:

3 m @ 10.04 g/t Au

Lower Lighthouse

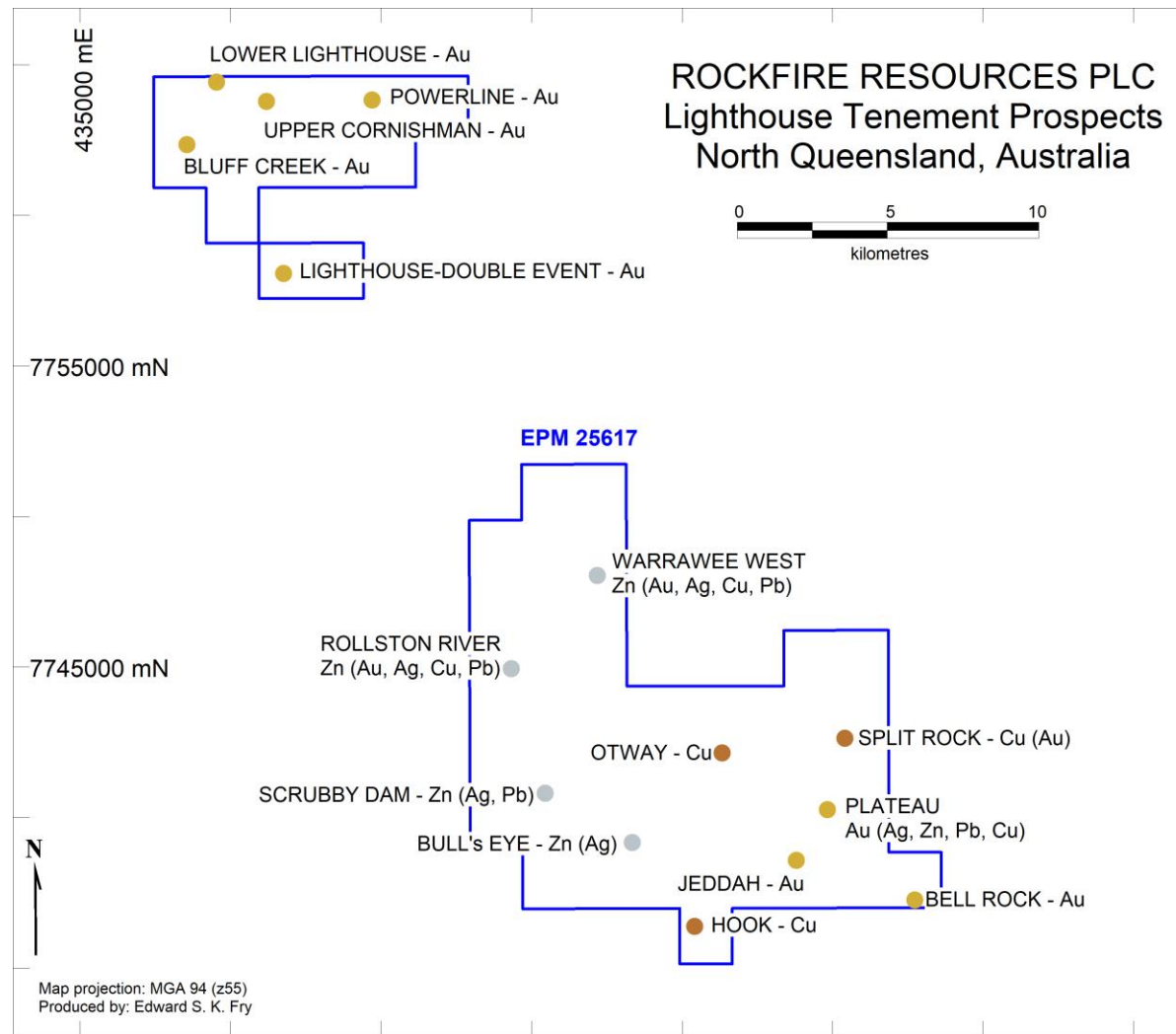
Drilling results:

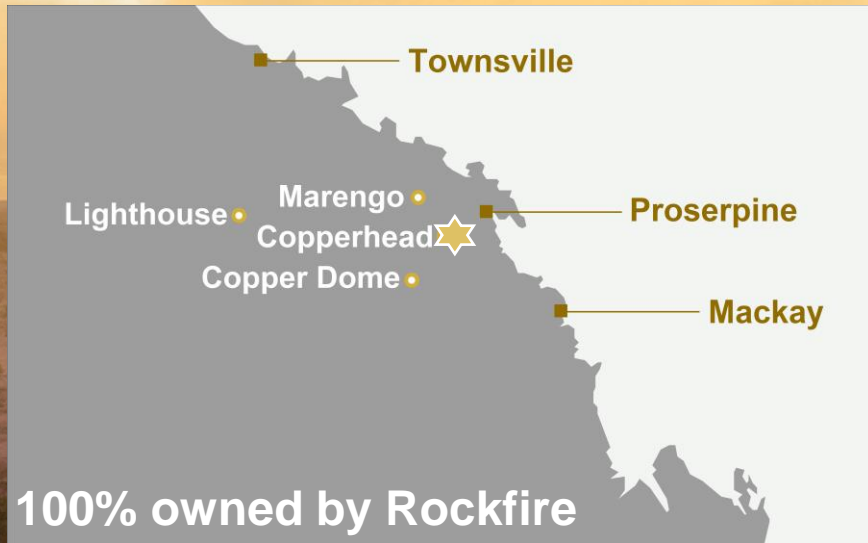
2 m @ 6.25 g/t Au

Bluff Creek

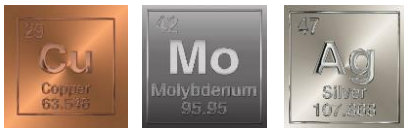
Drilling results:

2 m @ 7.3 g/t Au





Copperhead



Listed in the United States Geological Survey (USGS)
**“GLOBAL MINERAL RESOURCE ASSESSMENT
 Porphyry Copper Assessment of Eastern Australia”**
 (listed under it’s historical name of Julivon Creek)

Scientific Investigations Report 2010-5090-L Dated 2014



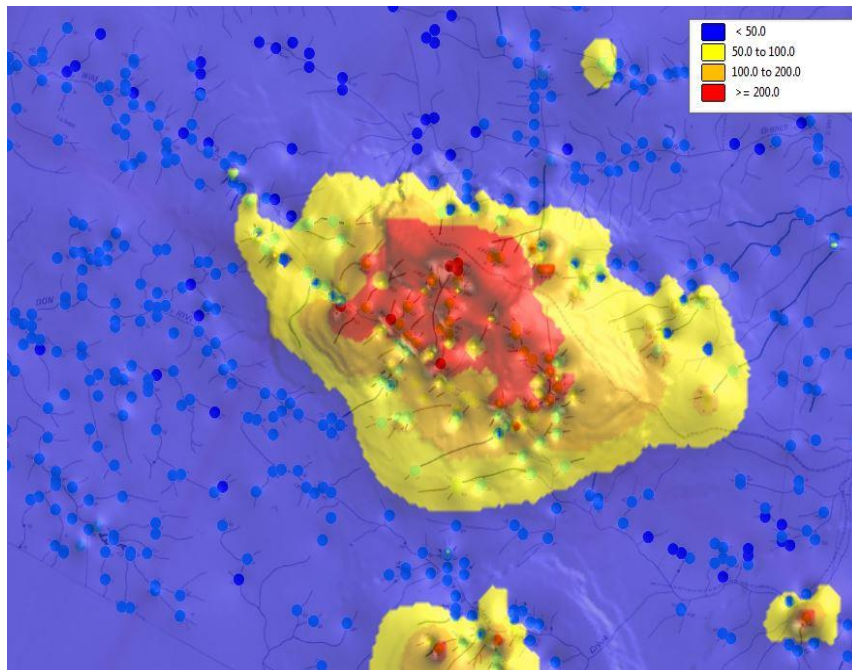
Copperhead Copper Deposit



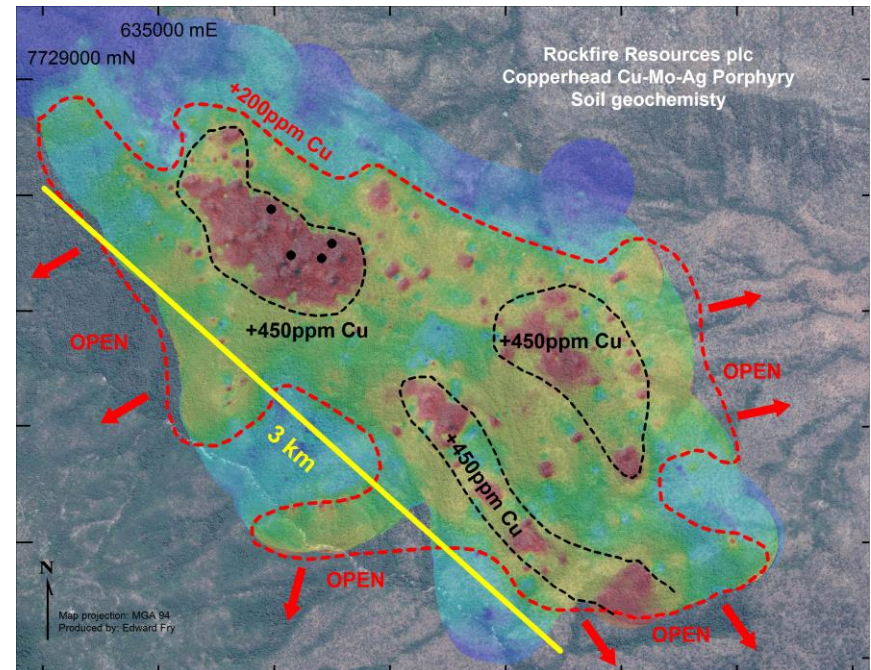
13 companies have explored historically, including CRA (1963-64), Carpentaria (1970-72) and WMC (1988-89)

200 km to Australia's largest copper refinery, owned by Glencore Australia

5 drillholes in 1972 intersected visible copper minerals from surface to a maximum depth of 300 m



6 km X 3.0 km stream sediment anomaly

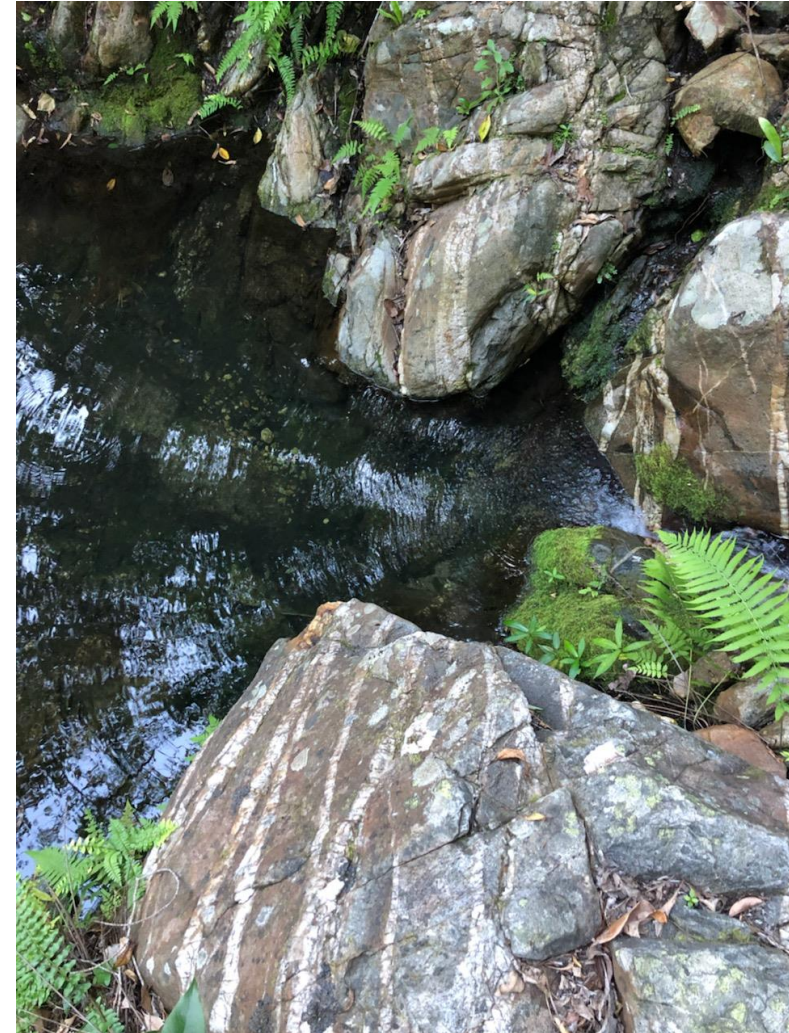


3.0 km X 2.0 km soil anomaly

Copperhead Copper Deposit



Geological mapping by Carpentaria identified sheeted quartz veins, with visible copper minerals.



Copperhead Copper Deposit

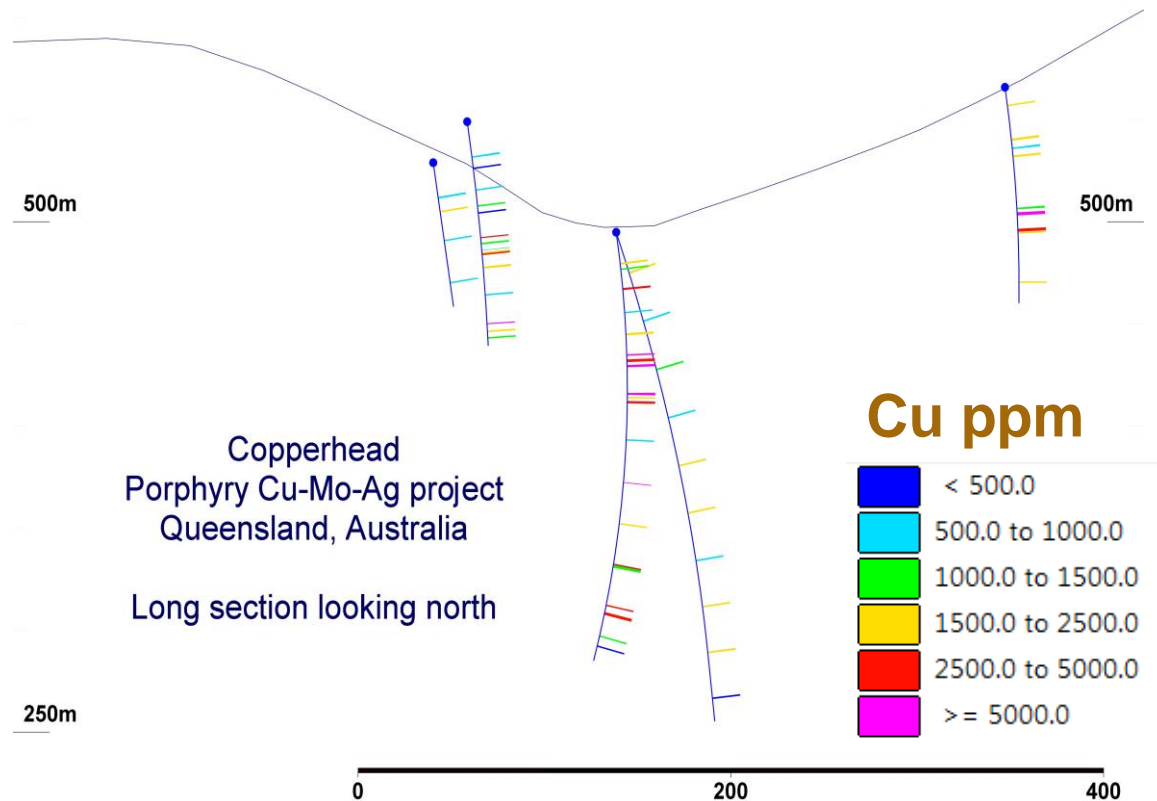


Drilling in 1972 tested a strike of approximately 400 m within a 3.0 km long x 2.0 km wide soil anomaly

Intermittent sampling of core in 1972. A sample was taken periodically down hole. No continuous core sampling

Highest grades in core sampling were 2.8 % Cu, 12 g/t Ag and 1.5 % Mo

Open in all directions and potential exists for a significant copper discovery



Copperhead Copper Deposit



Helimag survey completed in December 2020

- line spacing 40 m
- height of 35 m

Important fracture intersections have been outlined where high-grade copper may be concentrated

An extended high-density fracture pattern has been identified to the south and east of historical drilling, thereby significantly expanding the potential tonnage

ROCKFIRE RESOURCES PLC
Copperhead porphyry copper deposit,
Queensland, Australia.

Limit of soil survey, with a copper-in-soil anomaly up to 5500 ppm Cu

Background colour shows magnetic readings in nanoteslas (nT)

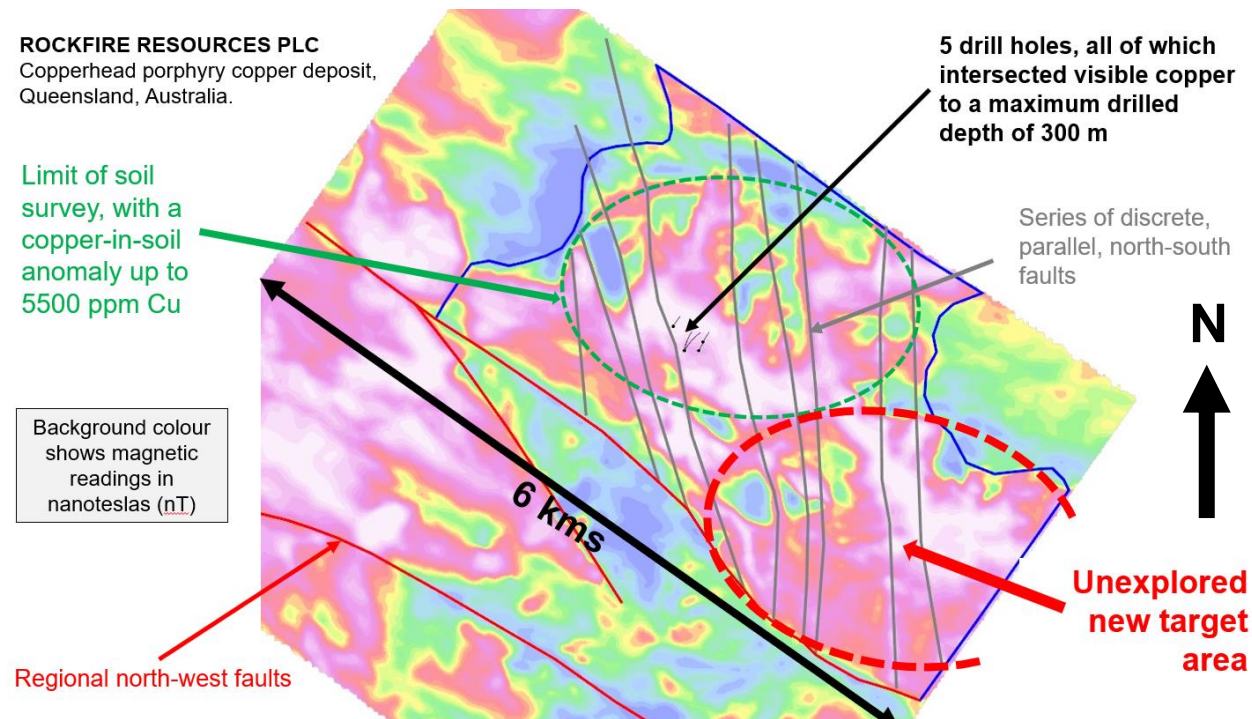
Regional north-west faults

5 drill holes, all of which intersected visible copper to a maximum drilled depth of 300 m

Series of discrete, parallel, north-south faults



Unexplored new target area

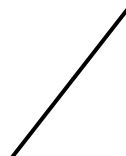


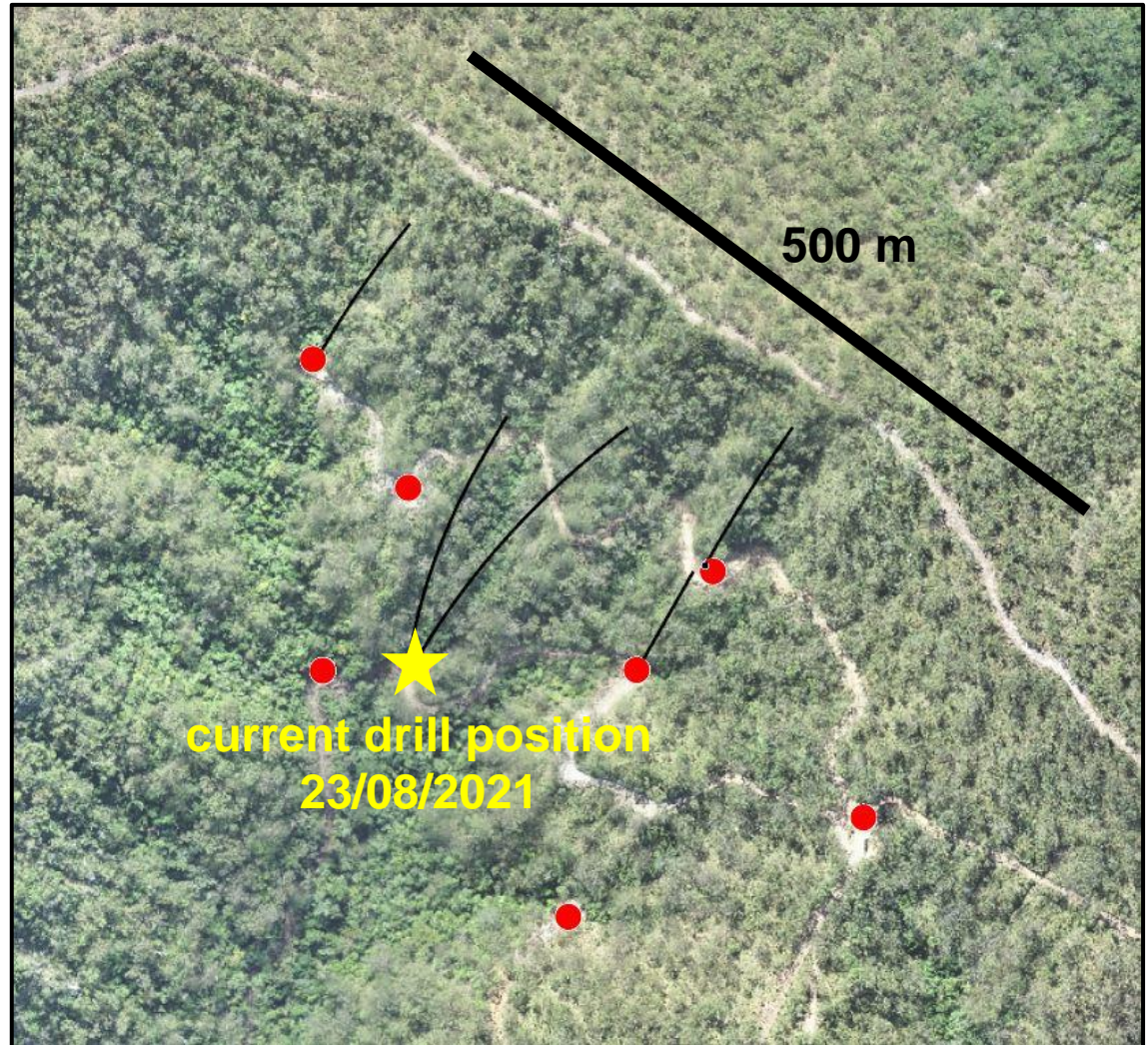
Copperhead Copper Deposit



Tracks have been re-established to gain access to historical drilling sites.

The current drilling will include verification of copper grades, extension to the east and south and at depth

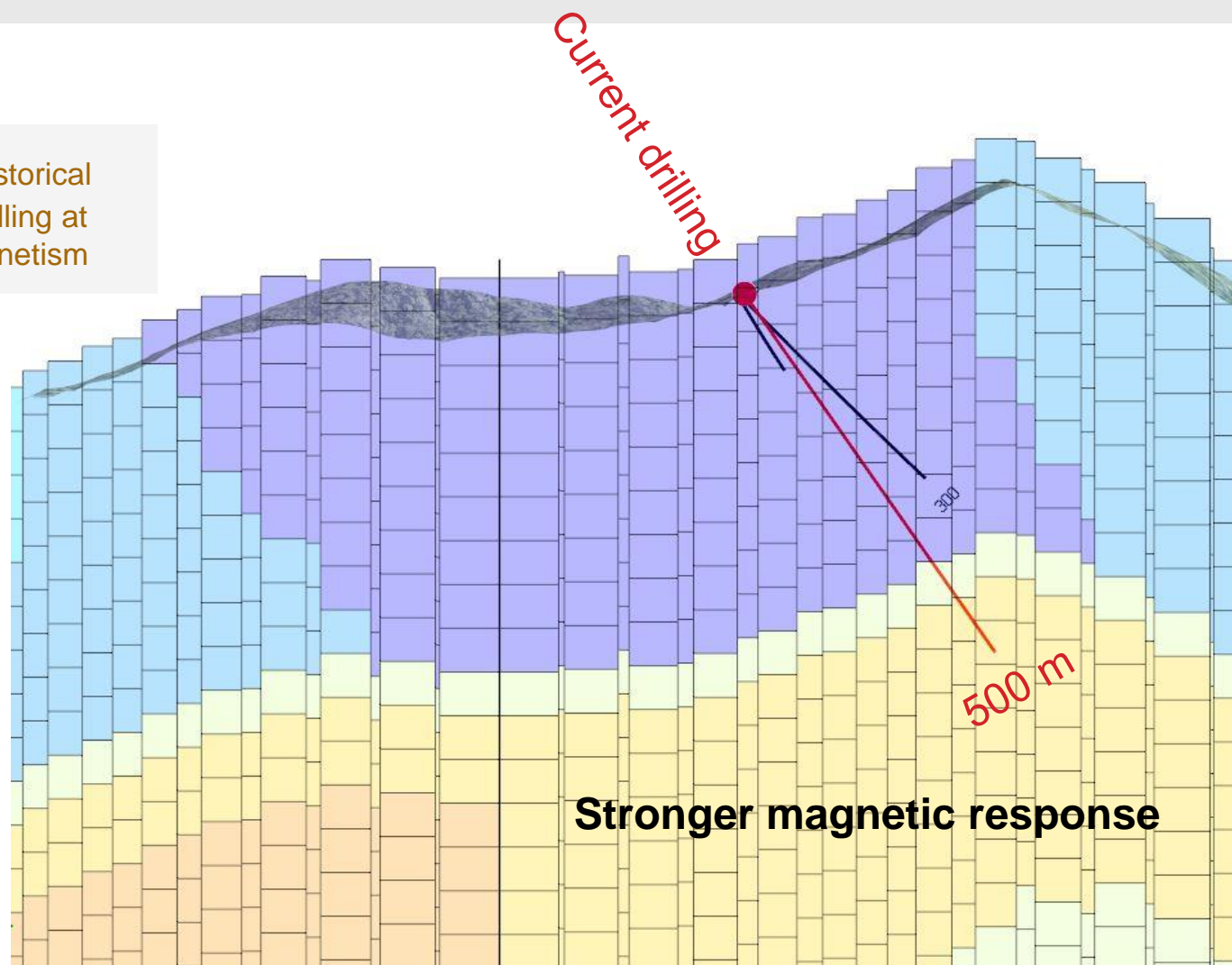
 Trace of historical drill hole



Copperhead Copper Deposit



Drilling to verify historical grades and to extend drilling at depth to test higher magnetism



Cross section looking towards the west, showing magnetic response

Copperhead: copper-rich veins



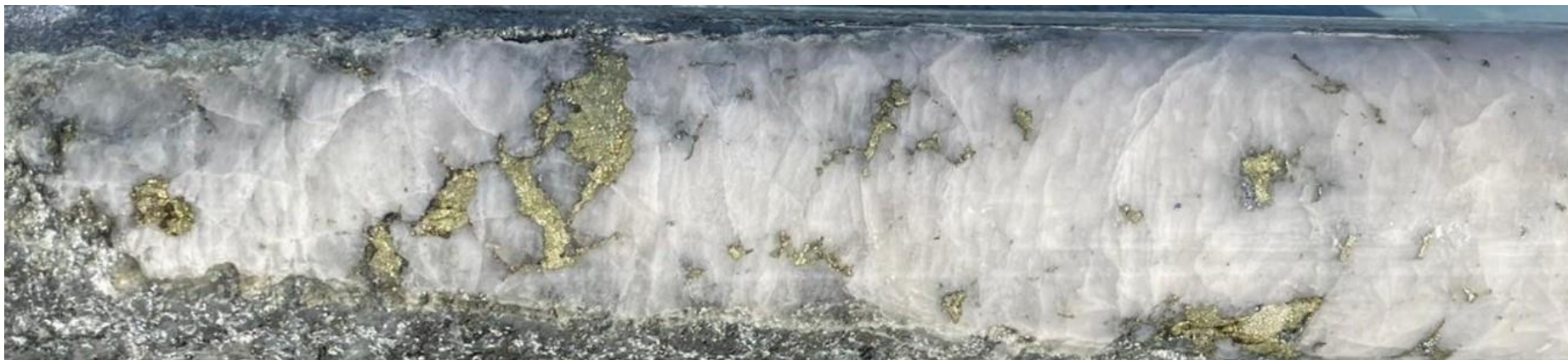
Copper is being regularly encountered in our current diamond drilling

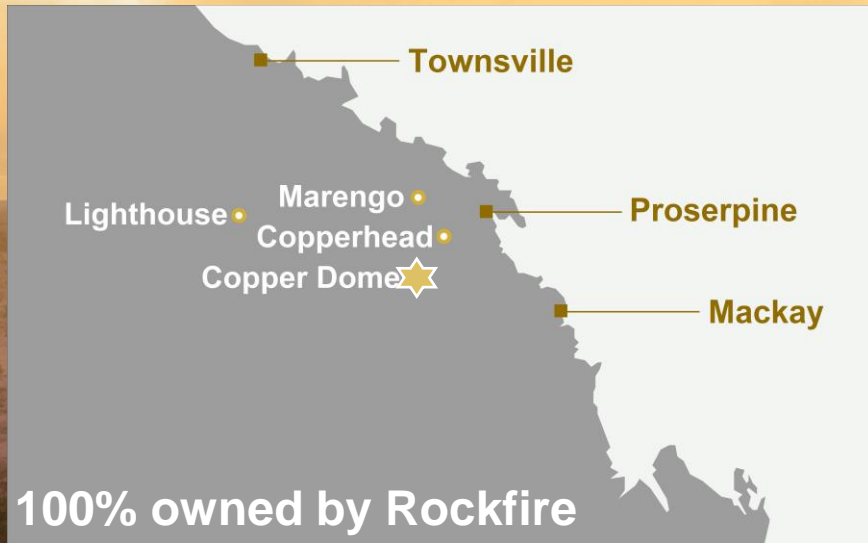


Copperhead: copper-rich veins



Copper is being regularly encountered in our current diamond drilling





Copper Dome



Listed in the United States Geological Survey (USGS)
**“GLOBAL MINERAL RESOURCE ASSESSMENT
 Porphyry Copper Assessment of Eastern Australia”**
 (listed under it's historical name of Mt Leslie)

Scientific Investigations Report 2010-5090-L Dated 2014

Copper Dome Copper Deposit – large-scale, under-explored



Historical workings exist with collapsed shafts being testimony to high grades

23.4 % Cu, 952 g/t Ag and 3.2 g/t Au are the highest-grade rock samples collected by Rockfire

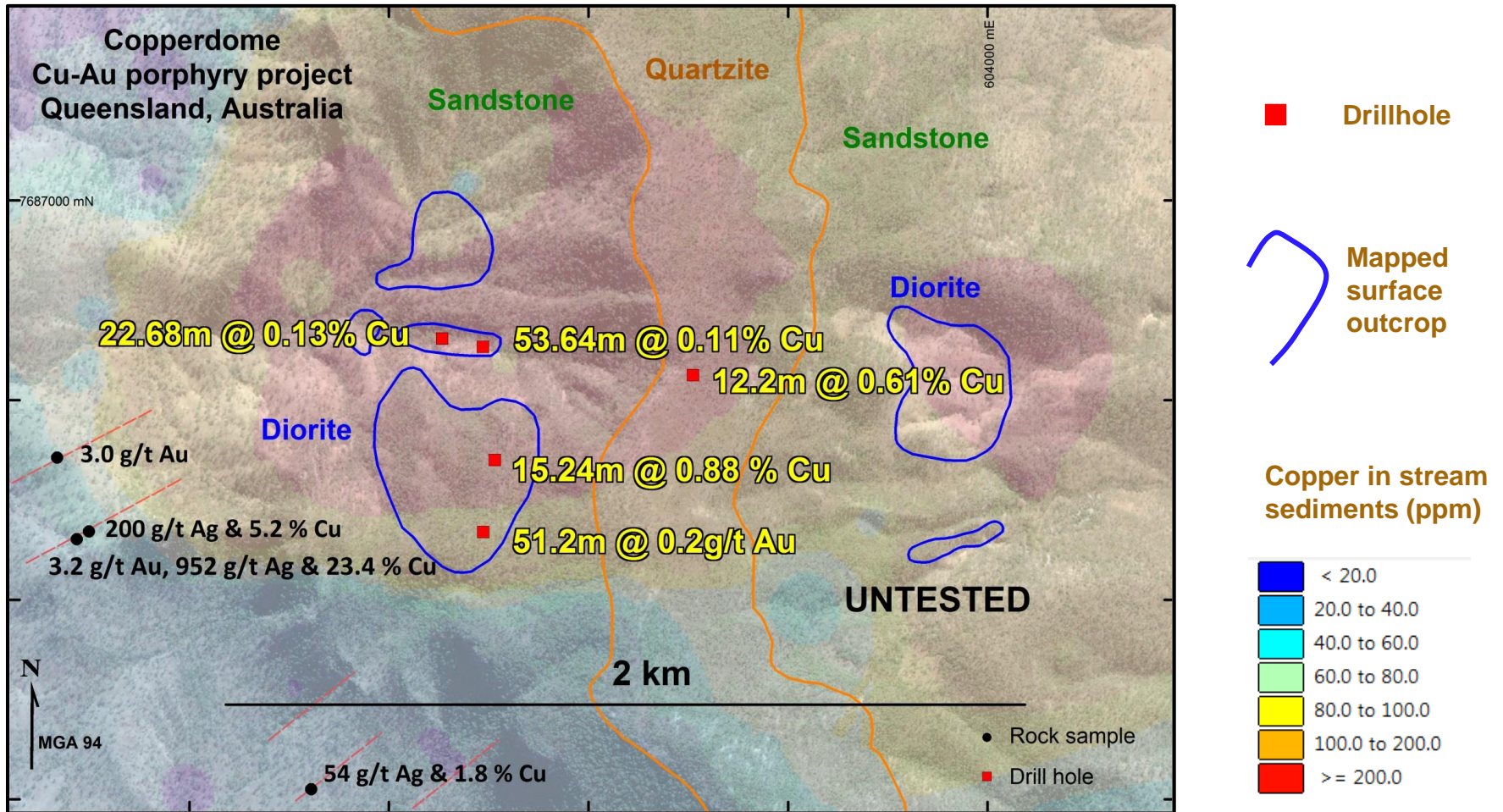
2.0 km x 1.0 km soil copper anomaly, delineating a large-tonnage target

15.24 m @ 0.88 % Cu from shallow drilling by Auselex Exploration in 1972

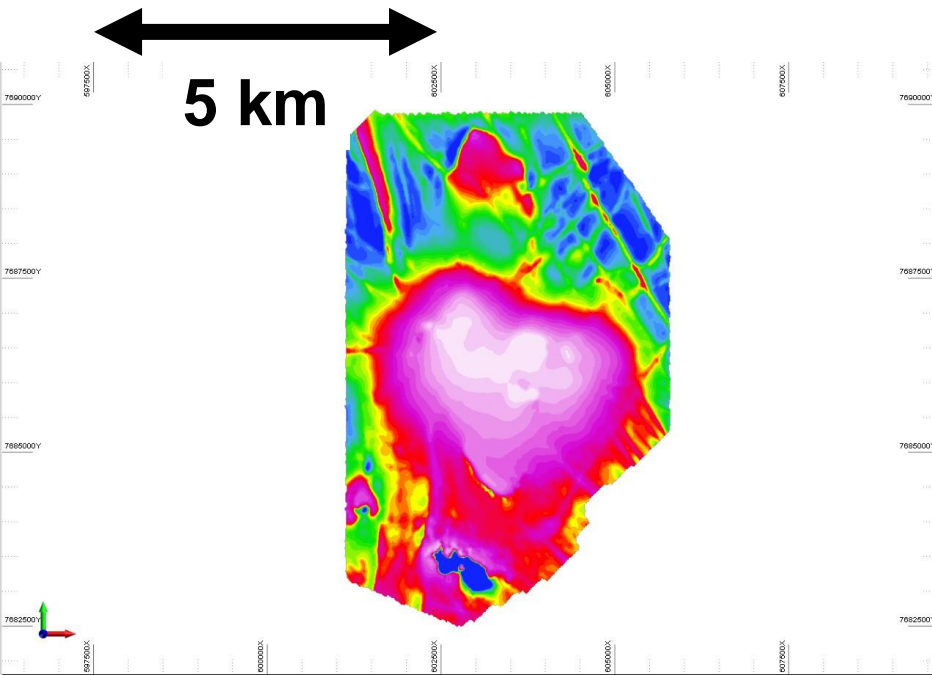
51.20 m @ 0.2 g/t Au from shallow drilling by Auselex Exploration in 1972

Under-explored, with no boundaries to the mineralization identified so far

Copper Dome Porphyry Copper Deposit



Copper Dome Porphyry Copper Deposit

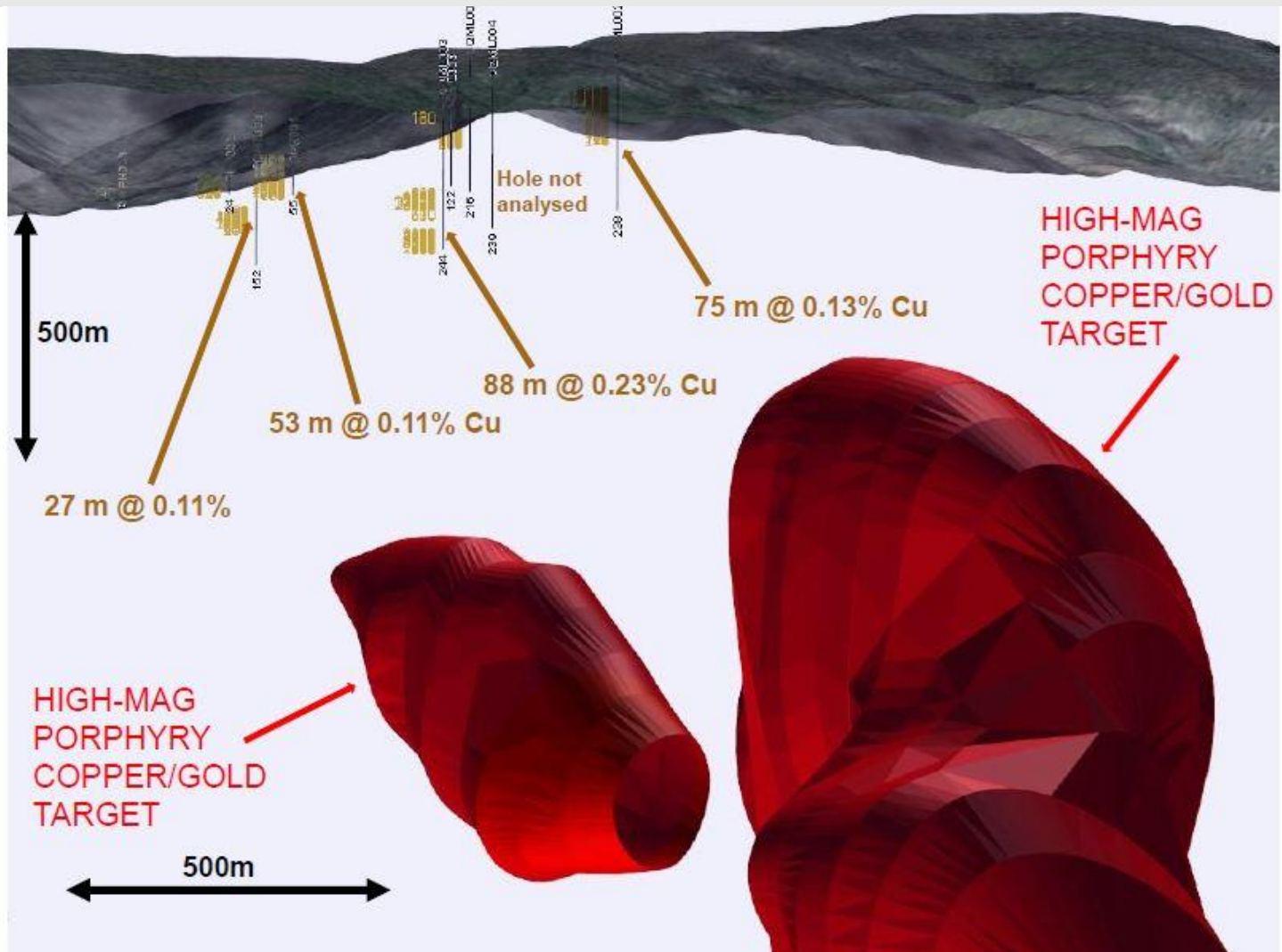


**Rockfire's helicopter magnetics RTP
(Reduced to Pole)**



**Helicopter magnetics 1VD
(1st Vertical Derivative)**

Copper Dome Porphyry Copper Deposit



Rockfire Resources – Summary



**Exploring in proven
gold and copper
mineralised areas**

**Two large-scale
porphyry copper
projects**

**Commodity
exposure to Au, Cu,
Ag and base metals**

**208,000 ounces of
gold & 1.5M ounces
of silver at Plateau**

**Highly experienced
and determined
board of directors**

**Targeting a maiden
JORC copper
resource**





Rockfire Resources plc

LON:ROCK

www.rockfireresources.com
rockfire@yellowjerseypr.com
201, Temple Chambers
3-7 Temple Avenue
London, EC4Y 0DT
United Kingdom