

Figure One | Project Location

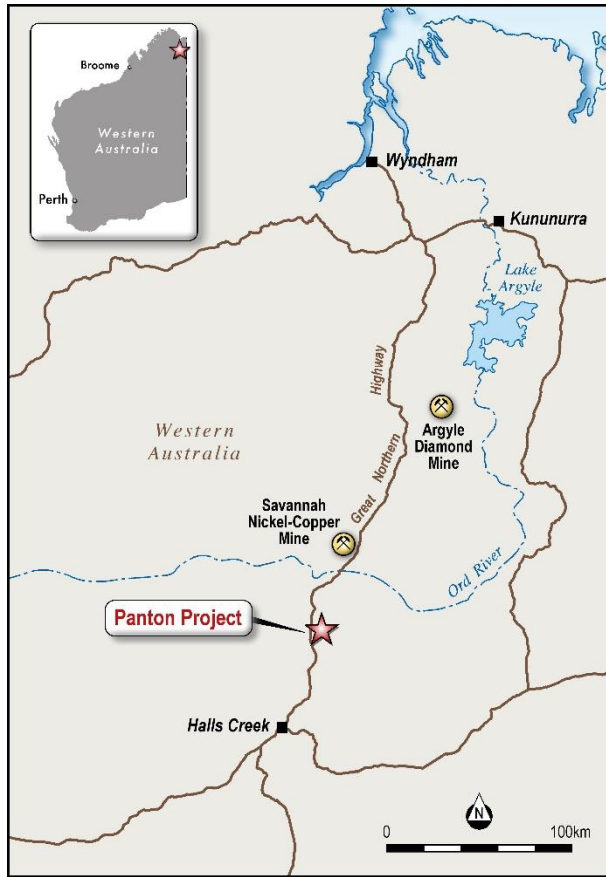


Figure Two | Resource Wireframes showing the Panton 101 and 201 reef system

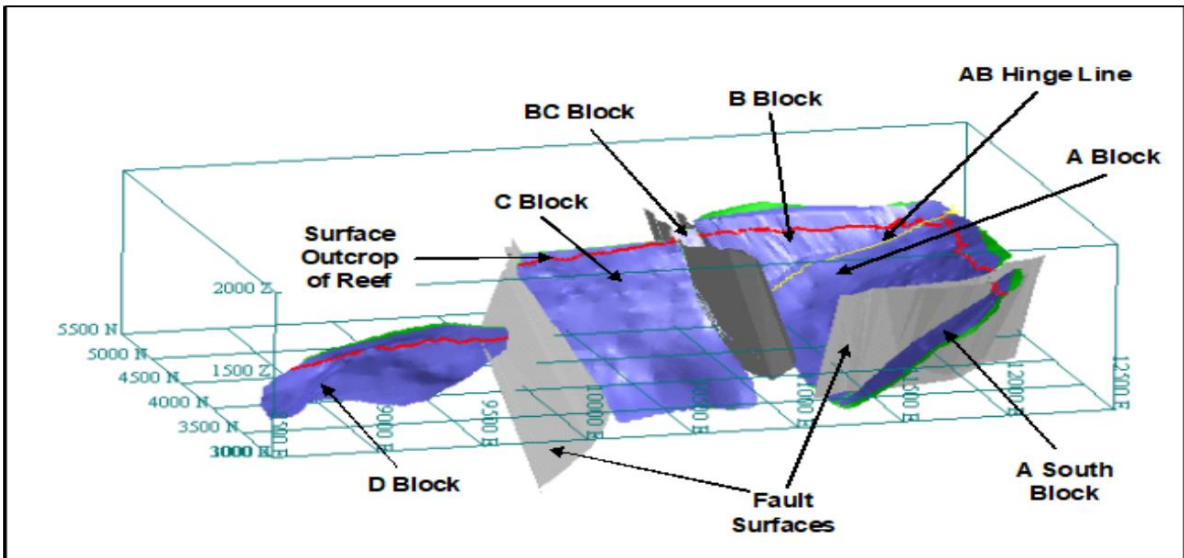


Figure Three | Exploration Portal and Decline Access



Figure Four | North-South Oriented Cross section of the Bushveld Layered Mafic-Ultramafic Complex

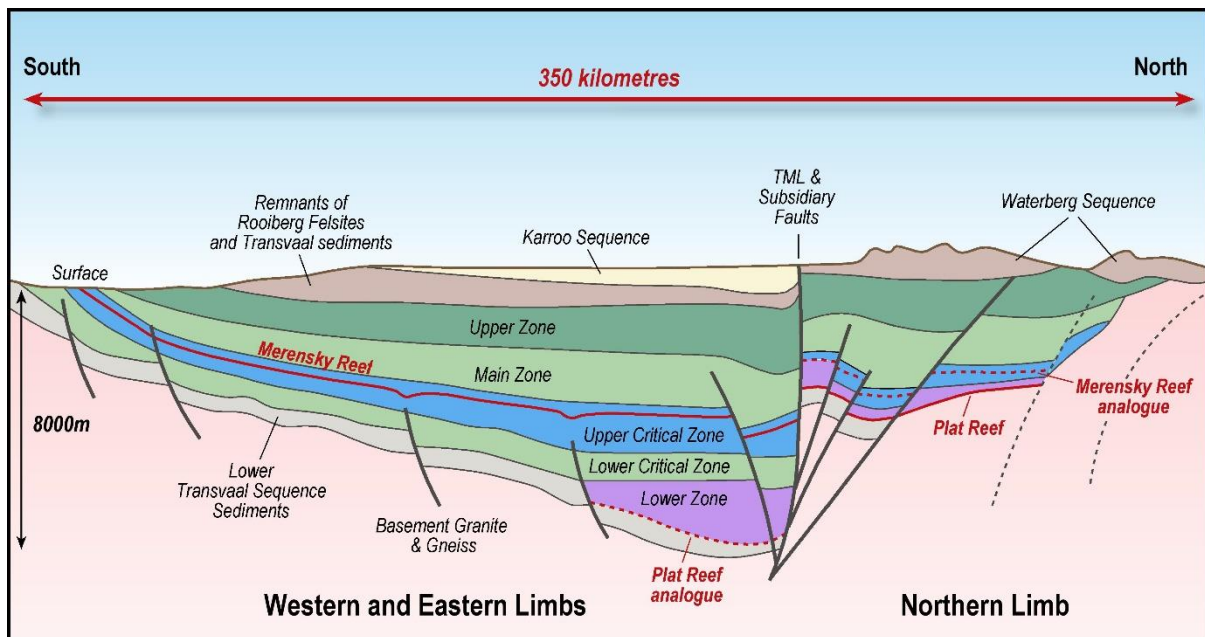


Figure Five | Panton PGM Project's Geology and Mapped Outcropping PGM-bearing Chromite Reefs

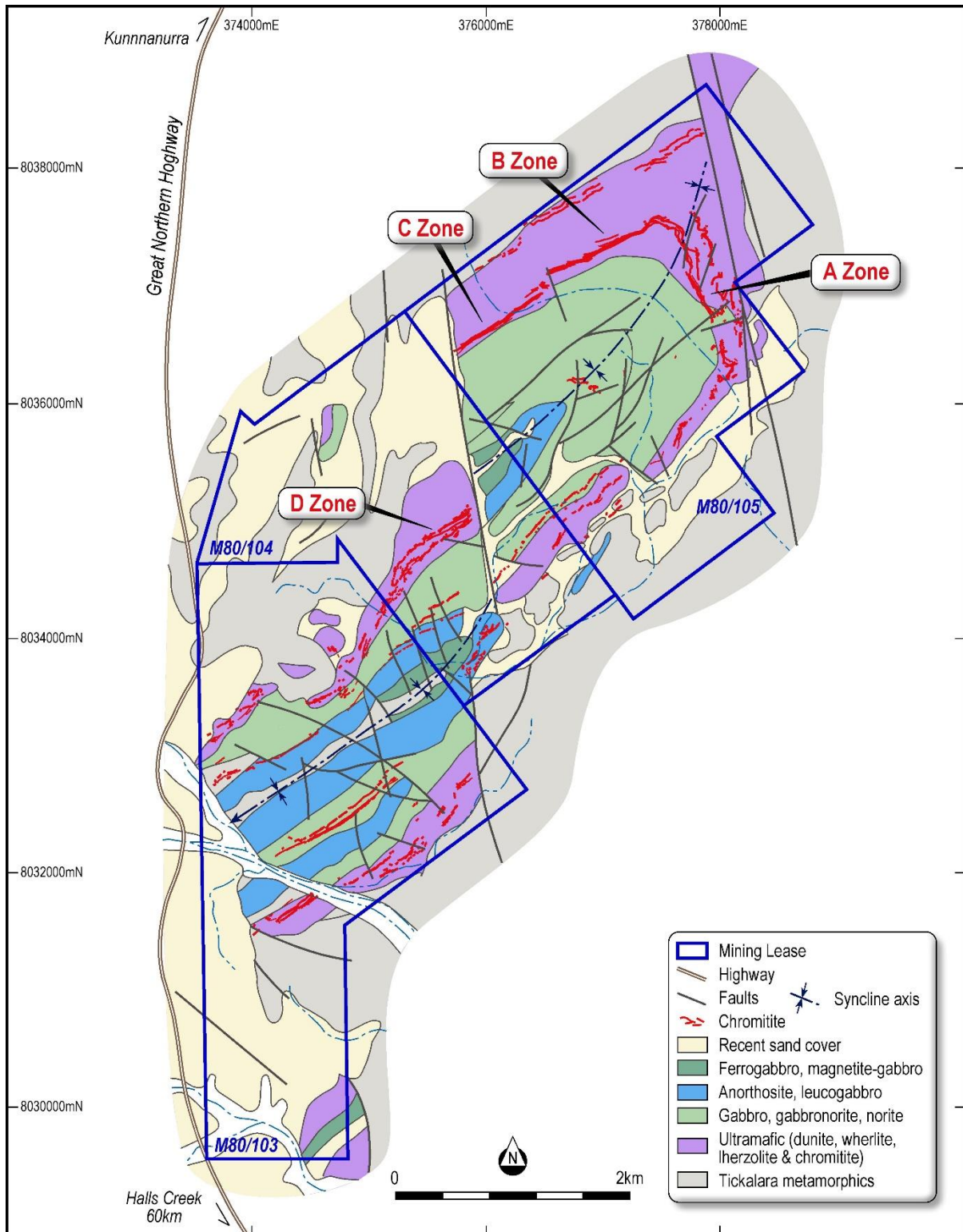
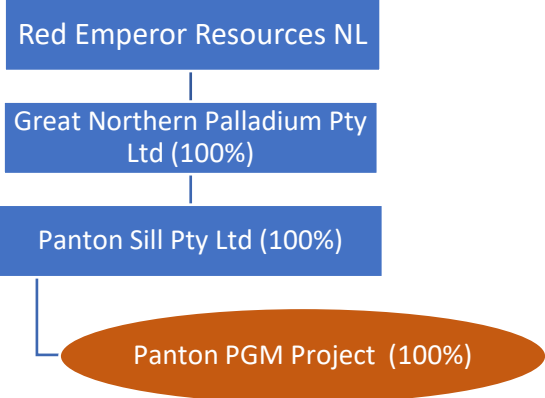


Figure Six | Group structure diagram for Red Emperor upon successful completion of the Proposed Acquisition



Note: A number of dormant wholly-owned subsidiaries have been omitted.