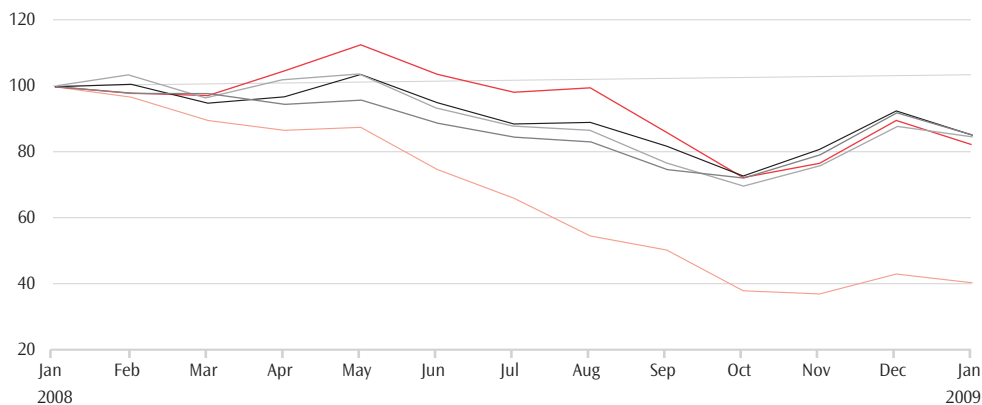


One Year Net Asset Value Total Return Peer Group Performance

(Figures rebased to 100 at 31 January 2008)



Ranking

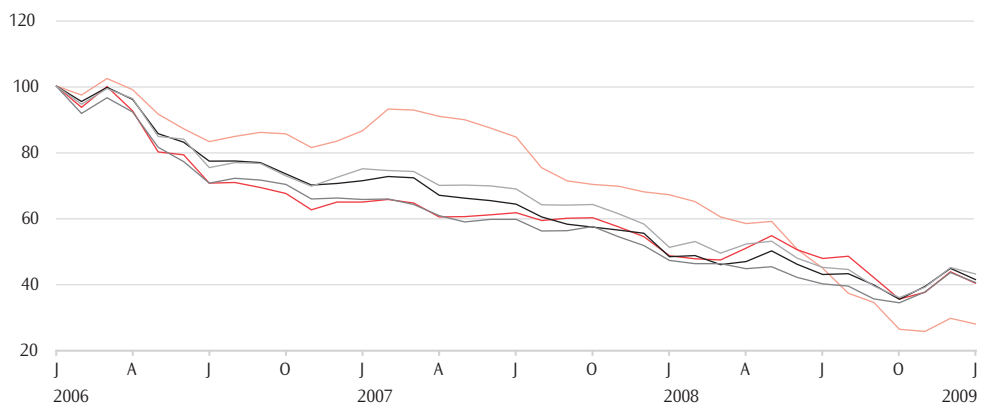
- JP Morgan Fleming Japanese Smaller Companies (-14.5%)
- Atlantis Japan Growth (-14.5%)
- SHIN NIPPON (-15.3%)
- Fidelity Japanese Values (-17.4%)
- Prospect Japan (-58.6%)

Data in sterling terms

Source: FundData.com

Three Year Net Asset Value Total Return Peer Group Performance

(Figures rebased to 100 at 31 January 2006)



Ranking

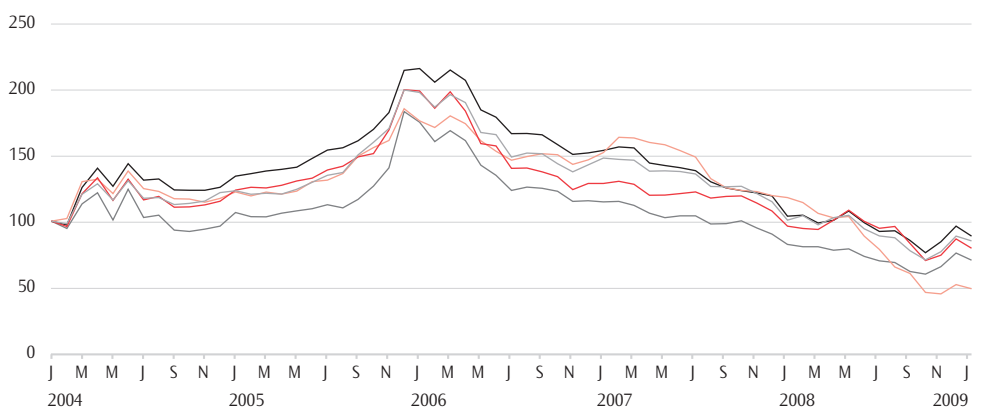
- SHIN NIPPON (-56.8%)
- Atlantis Japan Growth (-58.9%)
- JP Morgan Fleming Japanese Smaller Companies (-59.8%)
- Fidelity Japanese Values (-60.0%)
- Prospect Japan (-72.3%)

Data in sterling terms

Source: FundData.com

Five Year Net Asset Value Total Return Peer Group Performance

(Figures rebased to 100 at 31 January 2004)



Ranking

- Atlantis Japan Growth (-11.3%)
- SHIN NIPPON (-14.6%)
- Fidelity Japanese Values (-20.5%)
- JP Morgan Fleming Japanese Smaller Companies (-29.6%)
- Prospect Japan (-51.2%)

Data in sterling terms

Source: FundData.com