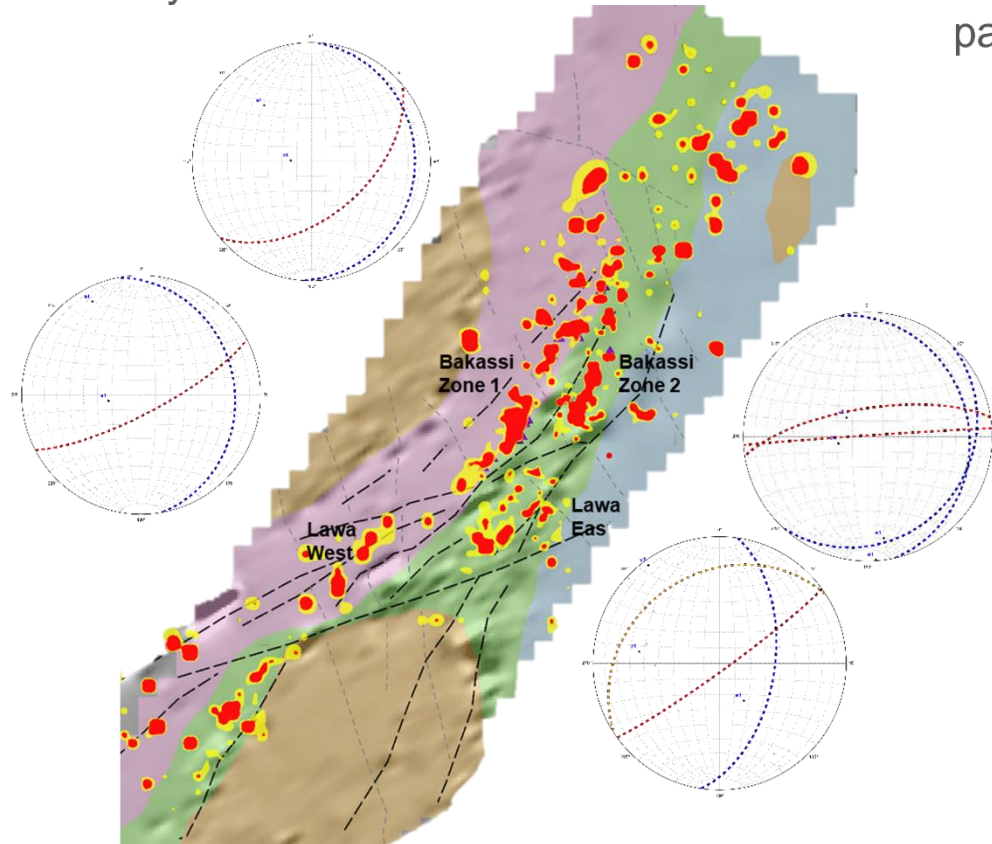


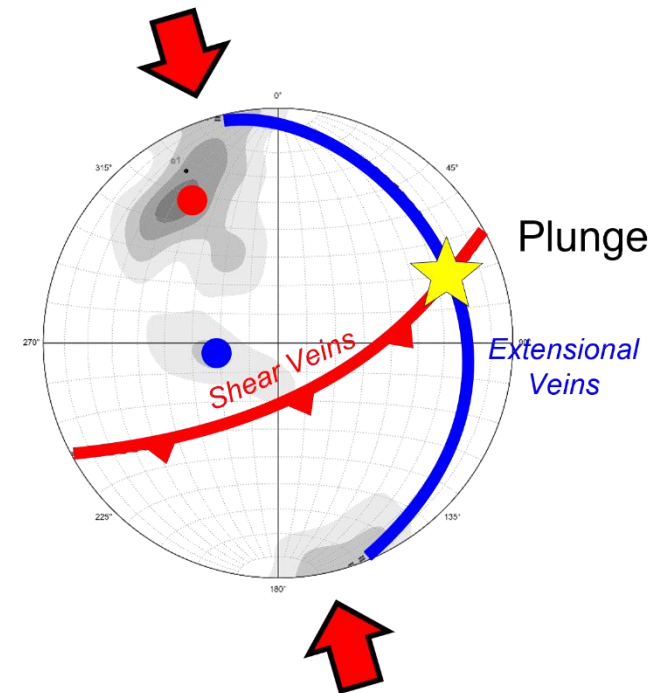
## Deposit-scale Controls on Gold Mineralisation at Bibemi

### Deposit-scale Controls

#### Summary of vein Orientations



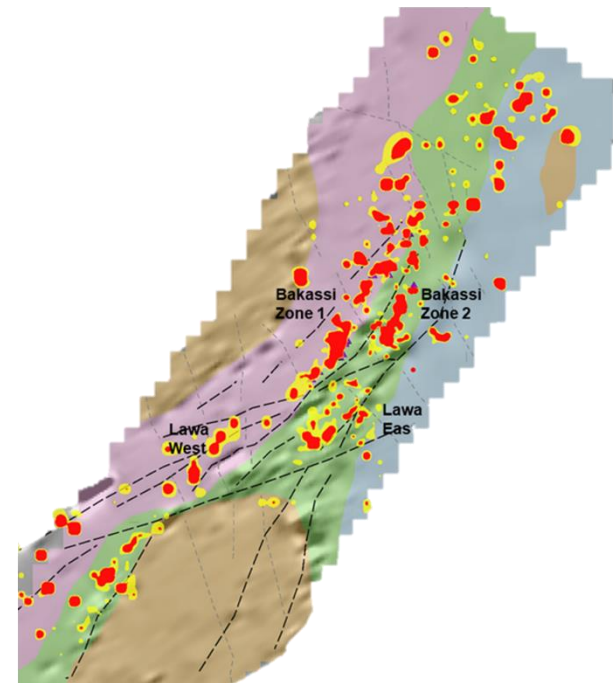
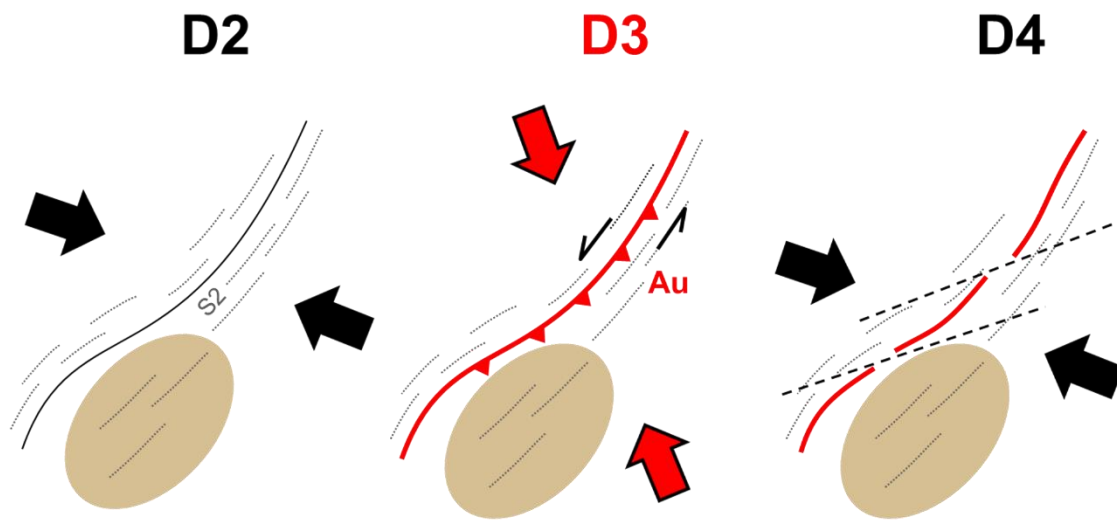
Predicted plunge of gold mineralisation parallel to intersection of veins = highest structural permeability for fluid flow.



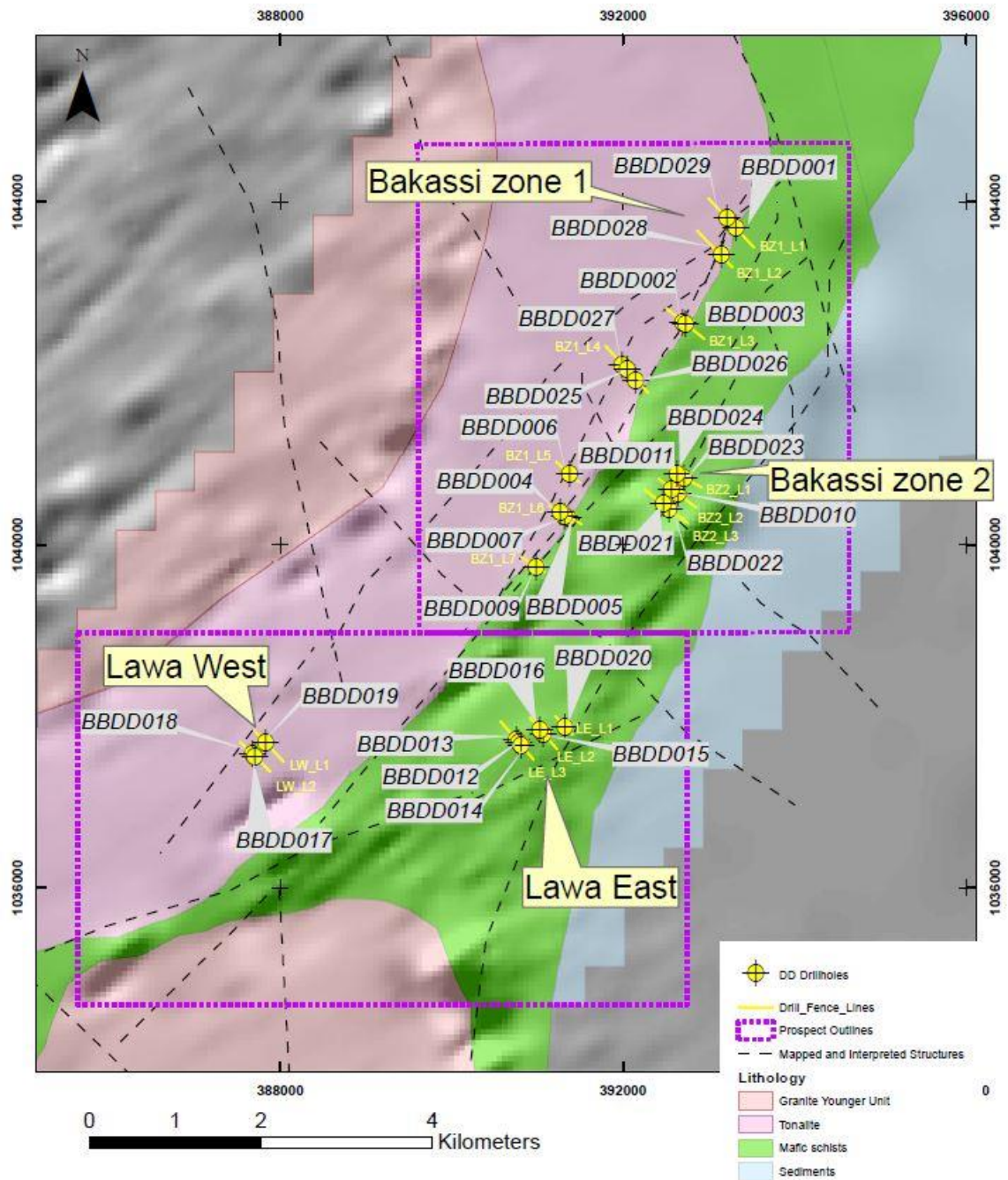
## Conceptual Model for System Evolution at Bibemi

### Conceptual Model

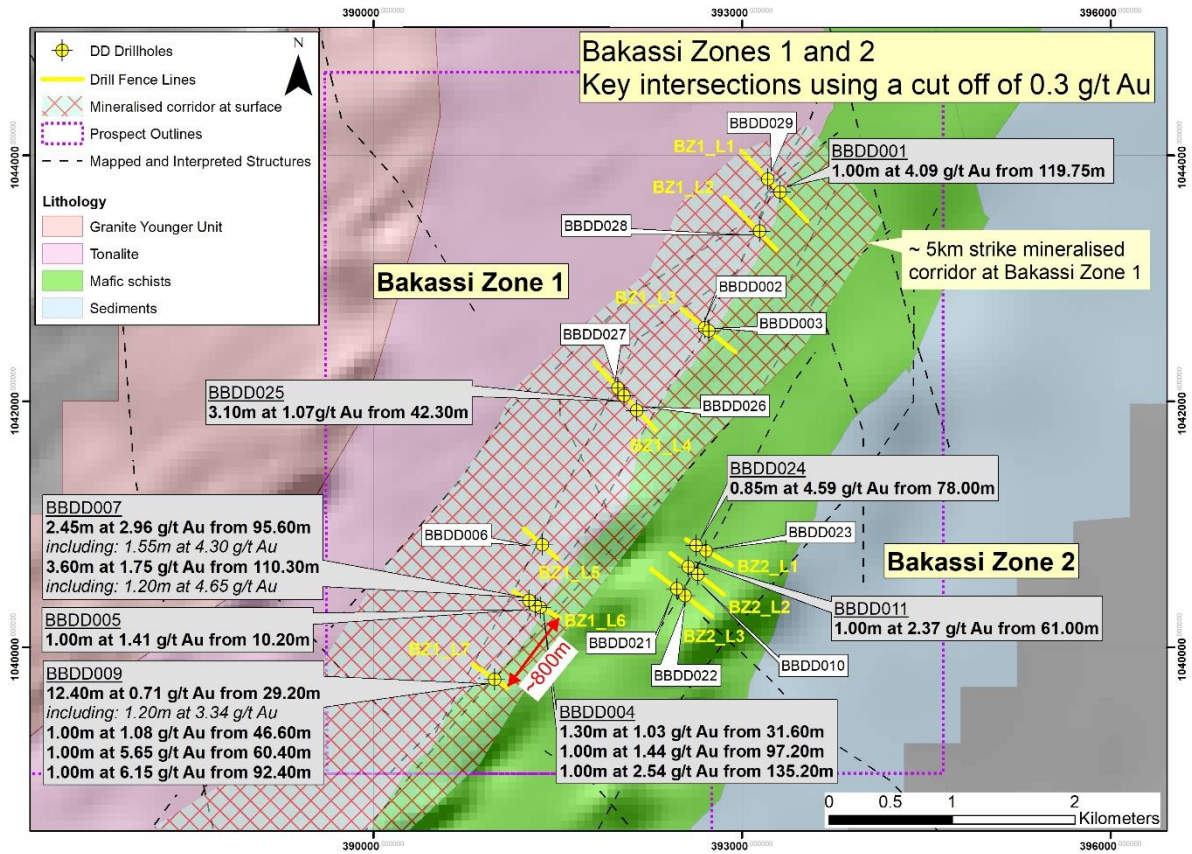
Schematic showing conceptual evolution of deposit-scale structures that control gold mineralisation at Bibemi.



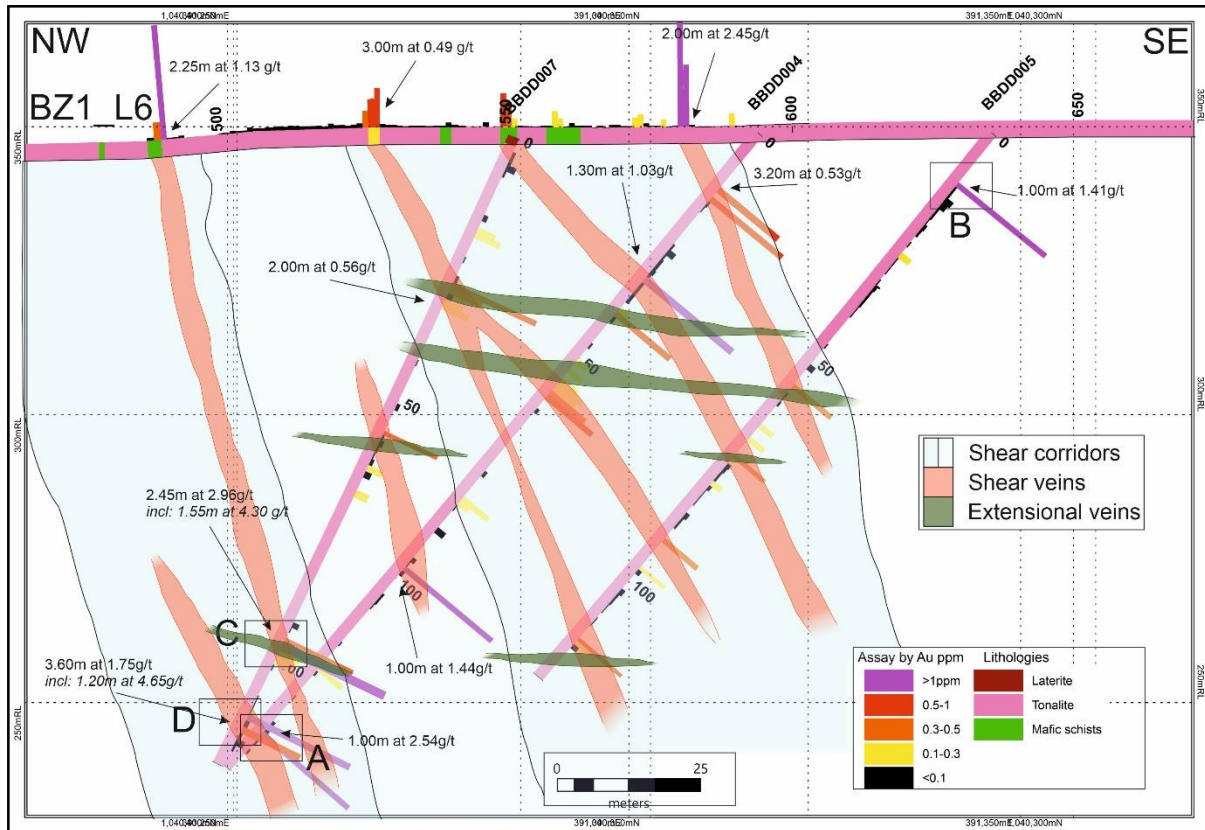
**Bibemi drill plan showing all fence lines and diamond drillholes completed to date**



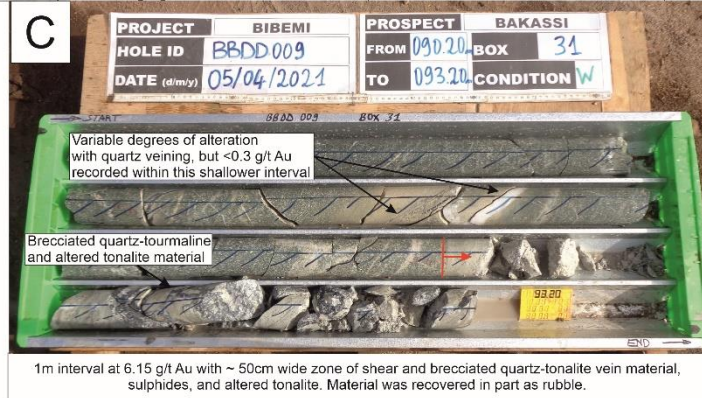
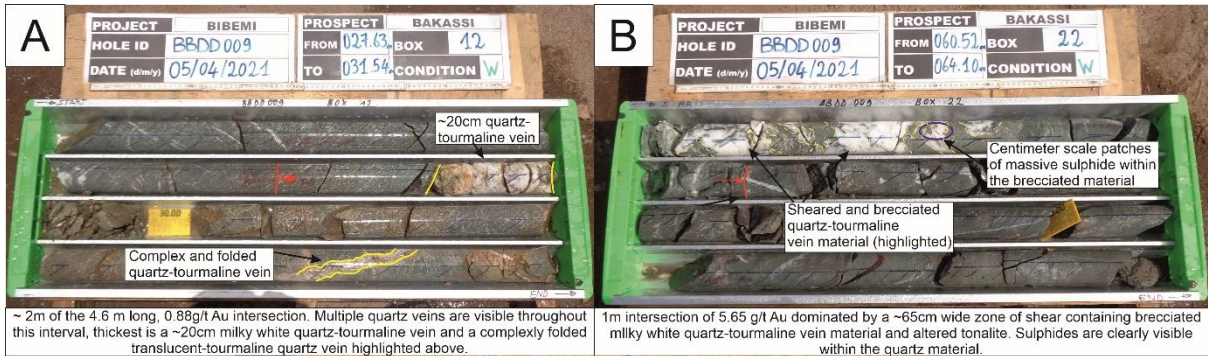
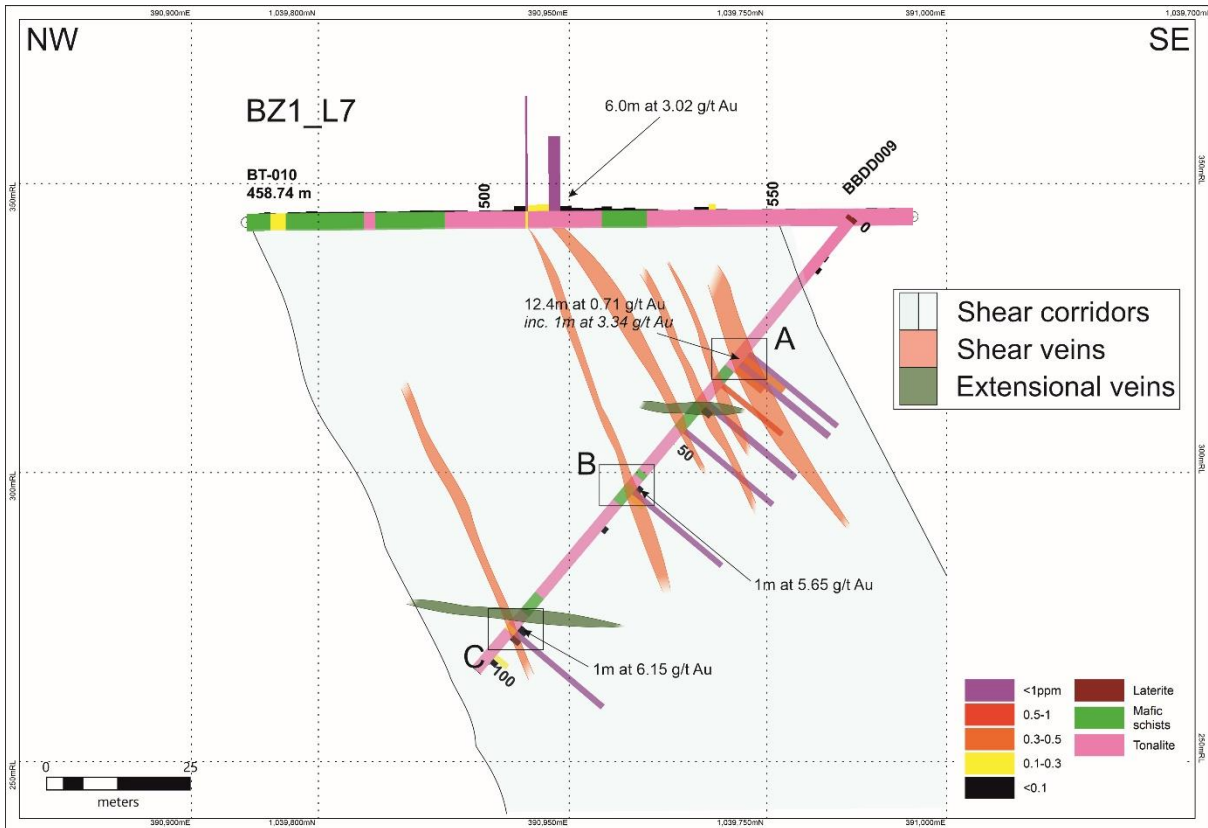
# Drill plan for Bakassi Zone 1 and Bakassi Zone 2, with key diamond drilling intersections



## Cross section for fence line BZ1\_L6 at Bakassi Zone 1 and corresponding core photos



## Cross section for fence line BZ1\_L7 at Bakassi Zone 1 and corresponding core photos



# Drill plan for Lawa West and Lawa East, with key diamond drilling intersections

