

4 June 2009

The Manager  
Company Announcements Office  
Australian Stock Exchange Limited  
Exchange Centre  
Level 4, 20 Bridge Street  
SYDNEY NSW 2000

VIA: [www.asxonline.com](http://www.asxonline.com)

Dear Sir,

**Re: Sydney Mining Club**

Please find attached a copy of a presentation being given by the Managing Director at the Sydney Mining Club on Thursday 4 June 2009.

A copy of the presentation has also been posted on our website [www.rusina.com.au](http://www.rusina.com.au).

Yours faithfully



**Mark Hanlon**  
*CHIEF FINANCIAL OFFICER &  
COMPANY SECRETARY*

For personal use only

For personal use only



**Sydney Mining Club**  
**June 2009**



# Disclaimer

This document is for informational purposes only and must not be used or relied upon for the purpose of making any investment decision or engaging in any investment activity. No reliance may be placed for any purpose whatsoever on the information contained in this Presentation nor on assumptions made as to its completeness. No representation or warranty, express or implied, is given by European Nickel PLC, Rusina Mining NL or any of their advisers, directors, officers, employees or agents, as to the accuracy, fairness or completeness of the information or opinions contained in this Presentation and no liability is accepted for any such information or opinions (which should not be relied upon) or for any loss howsoever arising, directly or indirectly, from any use of this document or its contents or information expressed in the Presentation. The information contained in this presentation is subject to amendment, revision and updating in any way without any notice or liability to any party.

Certain statements in this document relate to the future, including forward looking statements including but not limited to those with respect to the financial position and strategy of the companies, the price of nickel, the estimation of mineral resources and reserves, the realisation of mineral reserve estimates, the timing and amount of estimated future production, costs of production, capital expenditures, costs and timing of the development of new deposits, success of exploration activities, permitting time lines, currency fluctuations, requirements for additional capital, government regulation of mining operations, environmental risks, unanticipated reclamation expenses, title disputes or claims and limitations on insurance coverage and the timing and possible outcome of pending litigation. These forward looking statements involve known and unknown risks, uncertainties, assumptions and other important factors that could cause the actual results, performance or achievements of be materially different from future results, performance or achievements expressed or implied by such statements. Such risks, uncertainties, assumptions and other important factors include, among other things, general economic conditions, exchange rates, interest rates, the regulatory environment, structural changes in the industries in which the Company operates, competitive pressures, selling price and market demand. The forward looking statements in this document reflect views held only as of the date of this document and the companies expressly disclaims any intention or obligation to update or revise any forward-looking statements, whether as a result of new information, future events or otherwise, except in accordance with applicable securities laws.

The information in this report that relates to Exploration Results, Mineral Resources or Ore Resources is based on information compiled by Scott Robson (B.Sc.) who is a Member of The Australian Institute of Mining and Metallurgy. Scott Robson has sufficient experience which is relevant to the style of mineralization and type of deposit under consideration and to the activity which he is undertaking to qualify as a Competent Person as defined in the 2004 Edition of the 'Australasian Code for Reporting of Exploration Results, Mineral Resources and Ore Reserves'. Scott Robson consents to the inclusion in the report of the matters on his information in the form and context in which it appears".



# Presentation Outline

- The Philippines
- Introducing Rusina & European Nickel JV
- Brief Overview of the Acoje Project
- Heap Leaching
- Research & Development at Acoje
- Conclusion

For personal use only



# The Philippines, What's changed?

- 1980's Mining was greater than 20% GDP, currently less than 1%
- 1995-2004 False start
- 2004 Legal Certainty on Mining Act
- 2004 Minerals Action Plan
- 2005 formation of the Minerals Development Council
- 2006 onwards - A few projects.



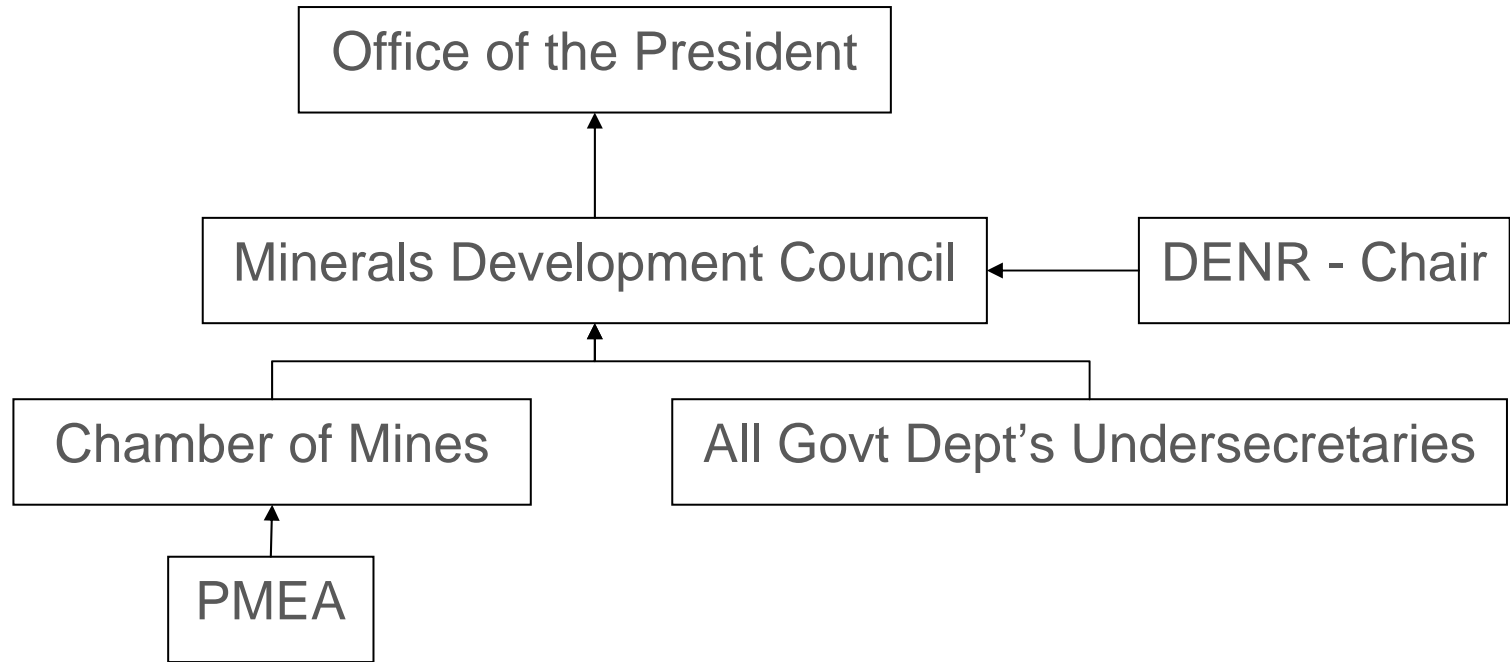
# The Philippines, 2004 Minerals Action Plan

For personal use only

- In 2004, President Gloria Macapagal-Arroyo announced a policy shift **“from tolerance to promotion of the mining Industry”** with the creation of the Minerals Action Plan
- Dealt with a number of mining investment impediments including permitting, Philippine Stock exchange reforms, stakeholder issues and the like.



# The Philippines, 2005 Minerals Development Council

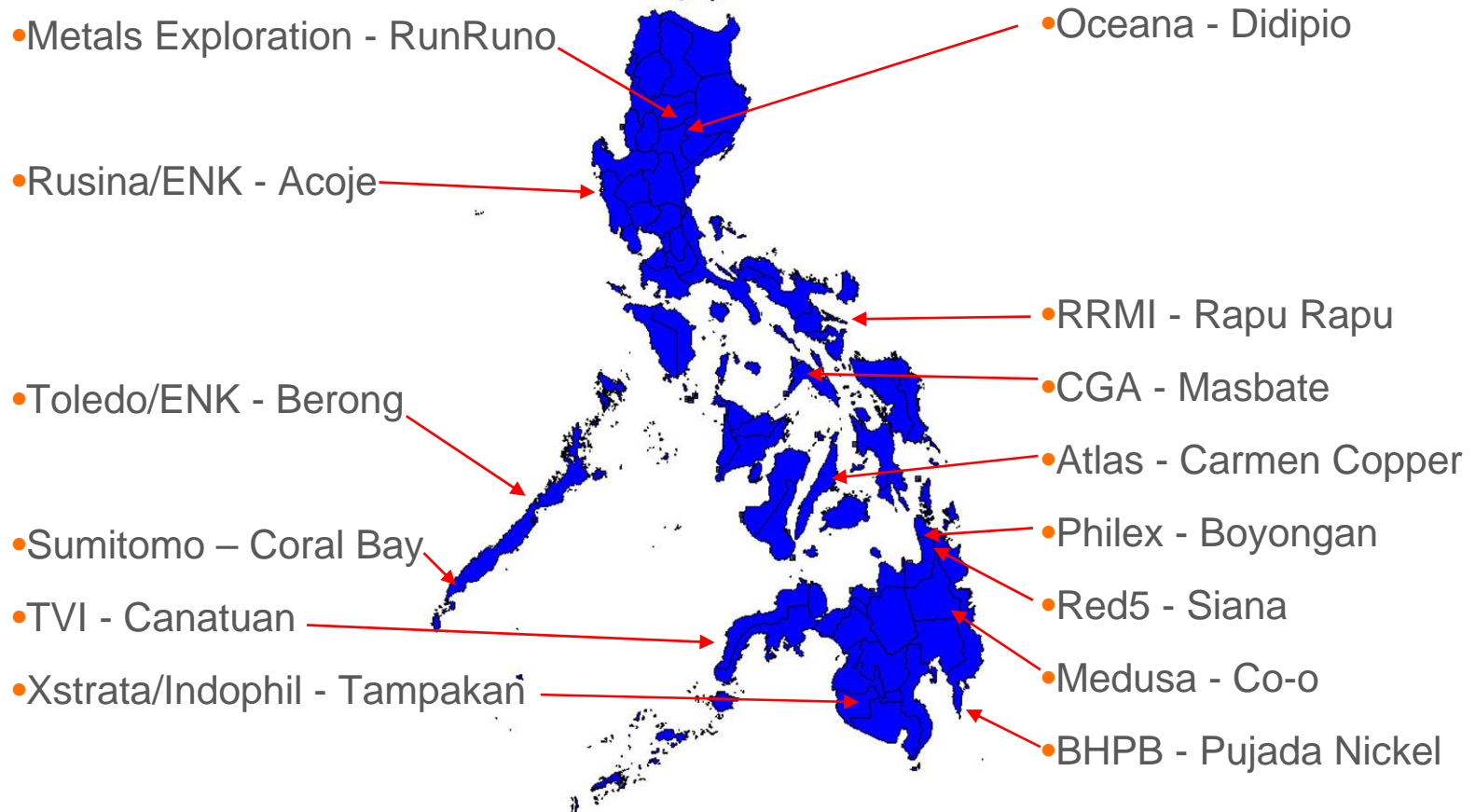


Mandated to advance mineral investment through co-ordination across Govt & Industry

- Revenue sharing LGU's
- Security Co-ordination AFP, PNP, Investment Defense Force

# The Philippines - Investment

For personal use only



# Introducing Rusina Mining and European Nickel

For personal use only

Rusina : Specialised Philippine focused mineral explorer.

- Significant partnering expertise
- Highly knowledgeable on “soft” issues
- Experienced, focused management team
- Resource diversification with nickel, chromite, Pt and copper/gold
- Attributable JORC resource of 550kt contained nickel
- Low cash burn rate
- Listed on the ASX (‘RML’) and AIM (‘RMLA’)

European Nickel : Mid-tier nickel producer in the making.

- Cost competitive, proven heap leach technology developed in-house
- Large attributable JORC resource of +1Mt contained nickel
- Geographic diversification: Turkey, the Philippines & Albania
- Strategic alliance with Chinese partners for funding and construction
- Near-term nickel production of 20,400tpa
- Listed on London’s AIM & PLUS markets under ticker: ENK

# The Acoje Deposit

- Brown-fields mine site on Luzon
- Historically one of Asia's largest metallurgical grade chromite mines
- Close to required infrastructure: power and port
- Hosts three styles of mineralisation across 3,765 ha
- Nickel laterites, nickel sulphides, platinum, chromite
- JORC resource of 48.8M tonnes @ 1.13% Ni and 0.06% Co
- Approx. 50:50 limonite v. saprolite
- DSO shipping of nickel ore with local partner DMCI Mining
- Nearby additional deposits add to mine life



# Nickel laterite classification

Dry laterites (“WA” Type)	Fossil laterites (“Balkan” Type)	Equatorial laterites (“Tropical” Type)
Australia, Southern Africa, Brazil	Balkans and Urals	Equator Regions (Cuba, New Caledonia, Philippines)
Host rock very old, 1-2b YA (Archean & Proterozoic)	Host rock 150m YA (Triassic – Cretaceous)	Host rocks 150m YA (Triassic – Cretaceous) but areas of highly active chemical and ground water weathering
Hot and dry conditions, periods of intense rainfall (seldom) followed by prolonged hot, dry conditions. Generally lower relief topography	Cool and cold conditions, periods of low seasonal rainfall, ‘higher’ latitudes. Generally moderate to low relief topography	Hot and wet conditions, tropics, constant rain and humid conditions, generally higher relief topography
Tailings disposal simple – evaporation	Tailings disposal uncomplicated	Tailings disposal challenging – rain
Generally higher clay content	Generally moderate to Low clay content	Generally moderate to high clay content
Low moisture content	Low moisture content	Very high moisture content
Predominantly limonite with silica and nontronite clays	Generally limonite >> saprolite but variable	Highly variable limonite and saprolite ratios
Generally slow leach profile	Generally medium leach profile	Generally fast leach profile

# Rusina & European Nickel Joint Venture

- JV signed in May 2007
- ENK will earn-in 40% (currently 20%),
- ENK will fund first US\$10m of Feasibility Study
- Final Project Equity Position: ENK 40%, Rusina 40%, Local partners 20%
- Rusina has the deposit, Philippine experience and a strong local team for permitting / development.
- ENK has the commercial, proven technology to unlock value, 'know-how' and engineered plant
- Local Partners have reputation, construction capability, and have provided an operational base to develop the Heap Leach through initial Direct Shipping Ore project.



# Economic Nickel Laterite Processing is Key

- ENK's in-house heap leaching technology is:
  - ✓ low capex and opex costs
  - ✓ simple engineering
  - ✓ generates own power
  - ✓ low carbon footprint for nickel industry
  - ✓ NO Tailings Facility
- US\$7/lb avg. Capex per annual lb Ni, much lower compared to avg. HPAL projects of US\$15-25/lb Ni
- Fully engineered plant that can be duplicated in other locations saving time and money
- Tried over 3 year period on site at Caldag mine in Turkey
- Technology developed in partnership with BHP Billiton

# Heap Leach Trials Parameters

- Full height heap to demonstrate
  - Permeability and recovery over time
  - Rain control methods on heaps and ponds
- Demonstrate benign nature of the technology to local stakeholders
  - Local population
  - Government, local and national
  - Other deposit holders
- Leaching trial will take 12 months
- Feasibility Study started, due in 2010
- Permitting for commercial development underway

For personal use only



# Heap Leach trials start in June 2009

For personal use only



# Heap Leach trials start in June 2009

For personal use only



# Downstream Flow-sheet for the HLT Demo/Pilot Plant

For personal use only



- Solution Management Key to HL
- Significant Value Adding options available for PLS to be tested at Acoje.
- The Acoje HL trials are very sophisticated.

# Acoje Test Centre – R&D

For personal use only



# Acoje Test Centre – Downstream Processing Development

• Strong focus on testing flow-sheets that may:

- Enhance product produced (pure Ni and Co hydroxide products rather than MHP)
- Reduce processing cost even further (acid recovery to reduce acid consumption and limestone consumption)

• Laboratory scale test work is well underway at ATC with promising results for:

- Acid Retardation (AR) - recovery of acid from PLS
- Resin-in-Pulp (RIP) – removal of Ni and Co from Fe precipitate pulp
- Ion Exchange (IX) – for separating the Ni and Co so that pure Ni and Co products can be produced

• Larger Scale Pilot Testing: HLT Downstream Plant

- 2 m<sup>3</sup>/h plant incorporating AR, RIP, IX has been designed , operational by Sep 2009



# Acoje Test Centre – Key Staff



## Country Manager

- Ken Stein

## Chemical Engineers

- Vince Smith
- Vicky Smith

## Metallurgists

- Darwin Manalo
- Vito Andrada
- Christine Sola

## Others

- Rob Gregory
- Simon Purkiss

# Positive Pre-Feasibility Study

- Highlights from the 2008 Acoje Pre-Feasibility Study\*
  - Production 24,500tpa Ni @ cash cost of US\$1.60/lb Ni (net of by-products) to metal, US\$3.10/lb Ni including refining charge.
  - Total development cost US\$498 million
  - Capex per annual lb Ni US\$7.84
  - Ung geared project NPV10 US\$375 million & IRR 28.3%
  - 3 year payback period
  - Further upside from converting additional Acoje & Zambales Chromite Inferred resources to JORC Indicated category.
- Currently being re-costed using Chinese engineering and equipment
- TCC will then proceed on Full Feasibility based on additional data from trial HL and Test Center Data.

\*Based on Indicated resources



# China will continue to fuel long-term nickel growth

ENK has developed a strategic alliance with Chinese partners:

## Jiangxi Rare Earth & Rare Metals Tungsten Group Co. Ltd. (“JXTC”)

- Large state-owned industrial enterprise based in the Jiangxi province
- This is JXTC’s first investment into a mining project outside China
- Building world’s first dedicated MHP nickel refinery, due to come on stream in 2010

## China Tianchen Engineering Corporation (“TCC”)

- Founded 1953
- Major EPC contractor & engineering design company
- International clients: ExxonMobil, Shell, Dow, DuPont, GE, Proctor & Gamble, Mitsubishi HI and others



# Conclusion

- Philippines is open for business.
- Economic processing of nickel laterite is the future to success
- Heap leaching is cost competitive and straightforward
- Ideally suited to smaller remote deposits, 50mt 1.2% economic
- Caldag operation will demonstrate process commercially
- Acoje will be first deposit in Asia using this innovative technology
- Heap leaching will add nickel units in 20kt increments
- Three year construction and development profile



# Contacts

## Rusina Mining

**Robert Gregory, MD**

**T:** +63 (0)2 815 1656

**E:** [manila@rusina.com.ph](mailto:manila@rusina.com.ph)

**Mark Hanlon, CFO**

**T:** +61 (0)8 9226 1111

**E:** [rusinaadmin@rusina.com.au](mailto:rusinaadmin@rusina.com.au)

**W:** [www.rusina.com.au](http://www.rusina.com.au)

## European Nickel

**Simon Purkiss, MD**

**T:** +44 (0)20 7290 3130

**E:** [info@enickel.co.uk](mailto:info@enickel.co.uk)

**W:** [www.enickel.co.uk](http://www.enickel.co.uk)

