

KEFI Gold and Copper plc

Issue of Jibal Qutman Exploration Licences

Appendix

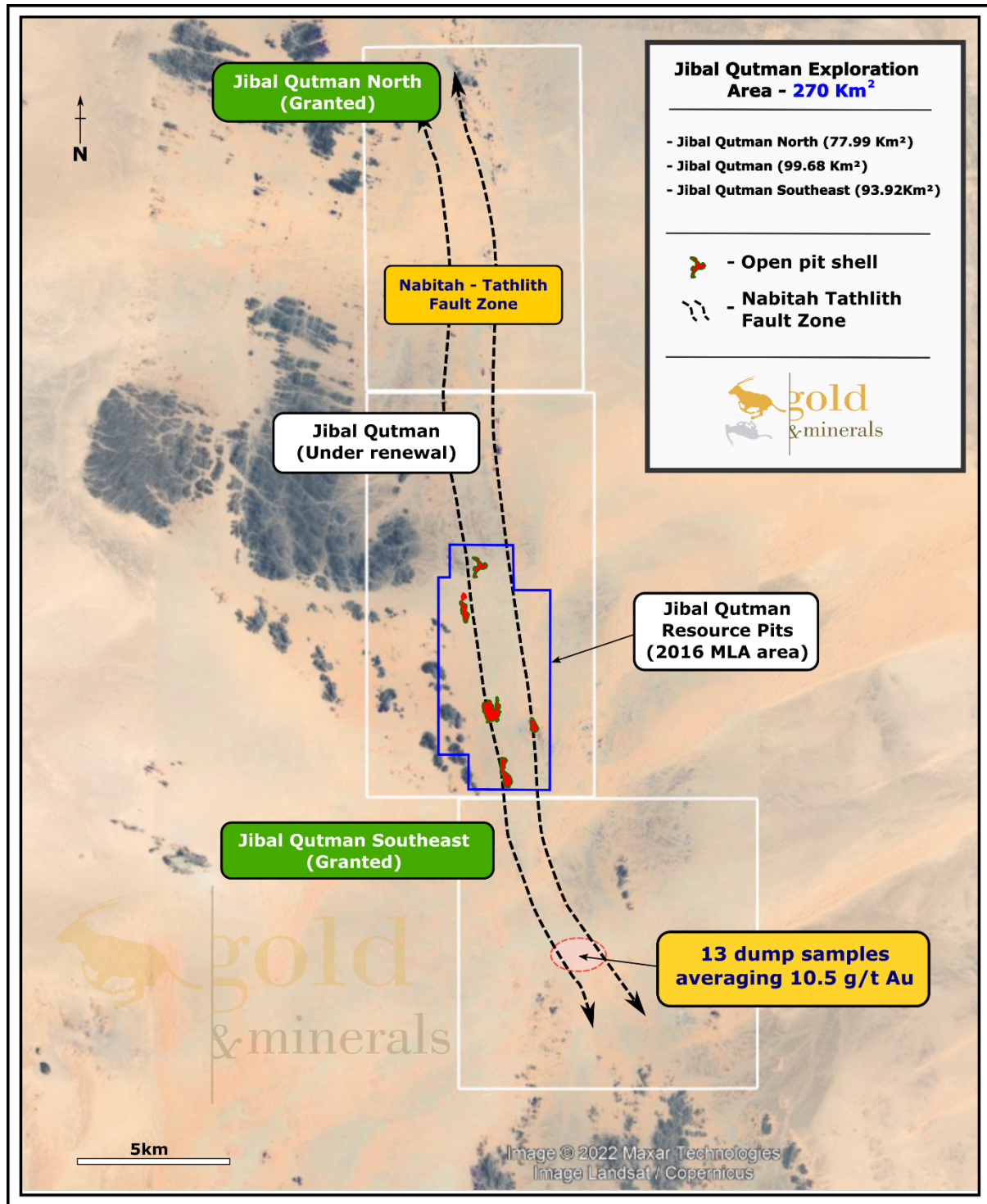


Figure 1 - The 270Km² Jibal Qutman exploration area – with the three exploration licences shown. JQ North and JQ Southeast have now been granted with Jibal Qutman under renewal

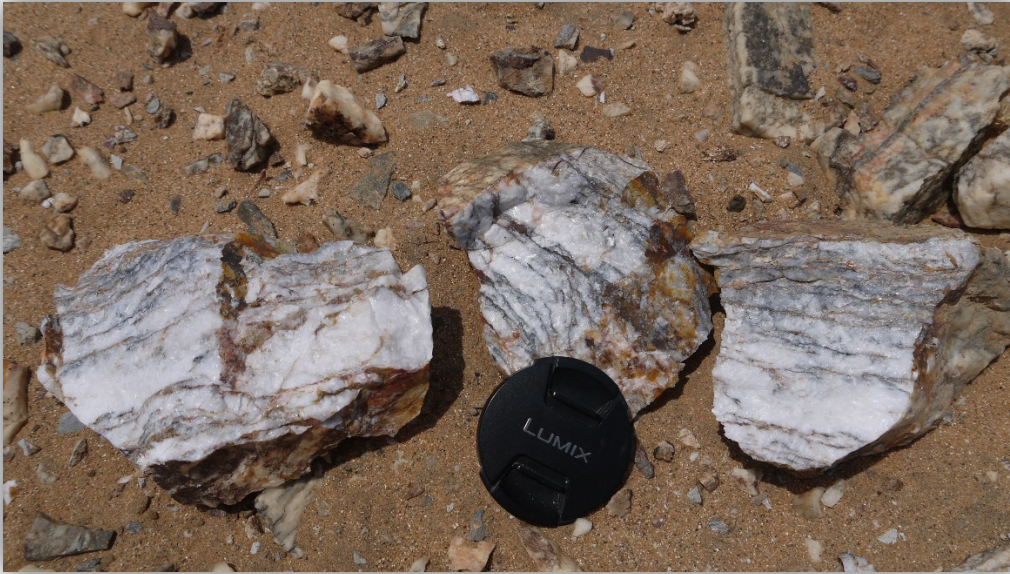


Figure 2 - Quartz material with banded sulphides taken from ancient crush dumps within the JQ SE licence