

A wide-angle photograph of a lush, green landscape with rolling hills and dense vegetation. In the foreground, two men are standing among the trees, looking towards the camera. The sky is blue with scattered white clouds. The overall scene is bright and natural.

Diversified Explorer and Developer  
Emerging Frontier Provinces

RIU Resources Round-Up  
Sydney, May 2018

# Disclaimer

## IMPORTANT NOTICE

These presentation slides (the “Slides”) have been issued by IronRidge Resources Limited (the “Company”) in relation to an update on activities by the Company. These Slides do not comprise an admission document, listing particulars or a prospectus relating to the Company, do not constitute an offer or invitation to purchase or subscribe for any securities of the Company and should not be relied on in connection with a decision to purchase or subscribe for any such securities. The Slides and the accompanying verbal presentation do not constitute a recommendation regarding any decision to sell or purchase securities in the Company.

The Slides and the accompanying verbal presentation are confidential and the Slides are being supplied to you solely for your information and may not be reproduced or distributed to any other person or published, in whole or in part, for any purpose. No reliance may be placed for any purpose whatsoever on the information contained in the Slides and the accompanying verbal presentation or the completeness or accuracy of such information. No representation or warranty, express or implied, is given by or on behalf of the Company, directors, officers, employees, agents or advisors or any other person as to the accuracy or completeness of the information or opinions contained in the Slides and the accompanying verbal presentation, and no liability is accepted by such persons for any such information or opinions or otherwise arising in connection therewith (including in the case of negligence, but excluding any liability for fraud).

The Slides contain certain statements and expressions of belief, expectation or opinion which are forward-looking statements, and which relate, inter alia, to the Company’s proposed strategy, plans and objectives or to the expectations or intentions of the Company’s directors. Such forward-looking statements involve known and unknown risks, uncertainties and other important factors beyond the control of the Company that could cause the actual performance or achievements of the Company to be materially different from such forward-looking statements. Accordingly, you should not rely on any forward-looking statements and neither the Company nor SP Angel accept any obligation to disseminate any updates or revisions to such forward-looking statements. Any statement as to the past activities of the Company’s directors should not be relied upon as being an indication of their future performance.

The Slides have not been approved by an authorised person for the purposes of section 21 of the Financial Services and Markets Act 2000 (“FSMA”). They are exempt from the general restriction on the communication of invitations or inducements to engage in investment activity set out in section 21 of FSMA on the grounds that they are directed only at those persons who have professional experience in matters relating to investments and who are: (i) investment professionals (within the meaning of article 19(5) of The Financial Services and Markets Act 2000 (Financial Promotion) Order 2005 as amended (the “FPO”)); (ii) persons or entities of a kind described in article 49(2)(a) to (d) of the FPO; and (iii) other persons who have professional experience in matters relating to investments and to whom it may otherwise lawfully be communicated (all such persons together being referred to as “Relevant Persons”). Any investment, investment activity or controlled activity to which the Slides relate is available only to Relevant Persons and will be engaged in only with Relevant Persons. Persons of any other description, including those that do not have professional experience in matters relating to investments, should not rely or act upon the Slides. Reliance on the communication set out in these Slides for the purpose of engaging in any investment activity may expose an individual to a significant risk of losing all of the property invested or of incurring additional liability. Any individual who is in any doubt about the investment to which these Slides relate should consult an authorised person specialising in advising on investments of the kind referred to in these Slides.

Pursuant to the Market Abuse Regulation (Regulation 596/2014) (“MAR”), the Slides constitute a market sounding for the purposes of Article 11 of MAR. By accepting the Slides, you warrant that you are able to receive market soundings, consent to receiving inside information, acknowledge that you are prohibited from using any inside information disclosed to you in any manner and agree to keep the inside information confidential. You irrevocably give your consent for your name to be entered on the Company’s insider list and any other Company records regarding the provision of the Slides or the discussion of their content.

Information in this Presentation relating to the exploration results is based on data reviewed by Mr Nicholas Mather (B.Sc. Hons Geol.), the Executive Chairman of the Company. Mr Mather is a Fellow of the Australasian Institute of Mining and Metallurgy who has in excess of 25 years’ experience in mineral exploration and is a Qualified Person under the AIM Rules. Mr Mather consents to the inclusion of the information in the form and context in which it appears.

# Corporate Overview



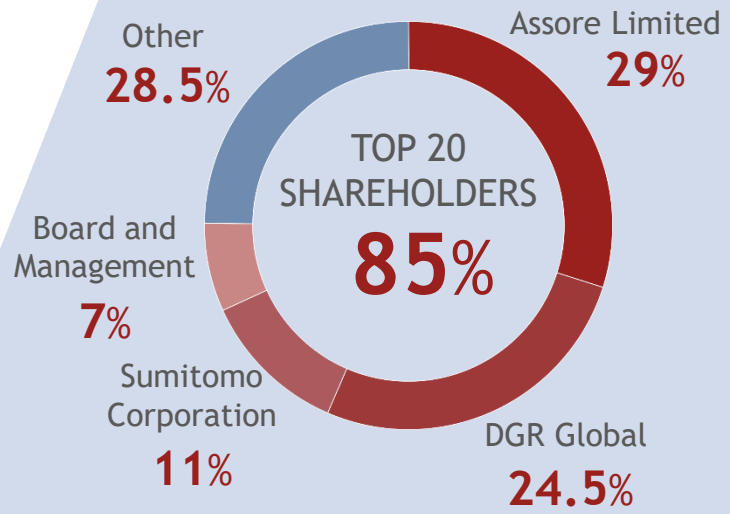
## Capital Structure

AIM: **IRR**

Issued Capital	281.3m
Options	30.5m
Performance Rights	.63m
Fully-diluted Share Capital	312.43m
Market Capitalisation (32p) (30 April 2017)	£90m
Cash Balance (31 Dec 2017)	US\$10.9m



## Major Shareholders



## Directors & Management

- Nick Mather  
Executive Chairman
- Vincent Mascolo  
Managing Director & CEO
- Stuart Crow  
Non-Executive Director
- Neil Herbert  
Non-Executive Director
- Alistair McAdam  
Non-Executive Director
- Bastiaan van Aswegen  
Non-Executive Director
- Ken Tsubaki  
Non-Executive Director
- Len Kolff  
Chief Geologist



# Accomplished Board & Management

- Extensive experience in project discovery, development and production.
- Comprehensive experience in infrastructure development.
- Strong capability in global equity and debt financing.
- Demonstrated and compelling track record in creating value for stakeholders.



**Nick Mather**

Executive Chairman

Geologist with 35 years in the generation and exploration of resource projects. Significant shareholder value created with Arrow Energy, Waratah Coal and more recently Orbis Gold and SolGold.



**Vincent Mascolo**

Managing Director and CEO

Mining engineer with 25 years experience in design and development of major infrastructure projects. Directorships include non-exec Director of DGR Global limited and LCME and Tekton Minerals.



**Stuart Crow**

Non-executive Director

Corporate financier with 25+ years of international experience in all aspects of capital markets, corporate finance and investor relations. Directorships include non-exec Director of TNG limited.



**Neil Herbert**

Non-executive Director

Fellow chartered accountant with 25 years experience in the mining, oil and gas sectors, both as an executive and investment manager. Formerly finance Director of TSX and AIM listed UraMin.



**Alistair McAdam**

Non-executive Director

MBA Metallurgist with 25 years experience in the mining and metals arena. Currently Assore Limited's group manager for new business, business development, strategies and marketing.



**Bastiaan van Aswegen**

Non-executive Director

Metallurgist with 28+ years experience in the mining and ferro-alloy production industry. Directorships include Executive Director of Assore Ltd responsible for technical and operational strategies.



**Ken Tsubaki**

Non-executive Director

Mr. Tsubaki joined Sumitomo Corporation in 1992 and has been involved in iron ore industry for over 20 years including work experiences in India and South Africa. Mr. Tsubaki is currently manager of Sumitomo's Iron & Steel Making Raw Materials Department.



**Len Kolff**

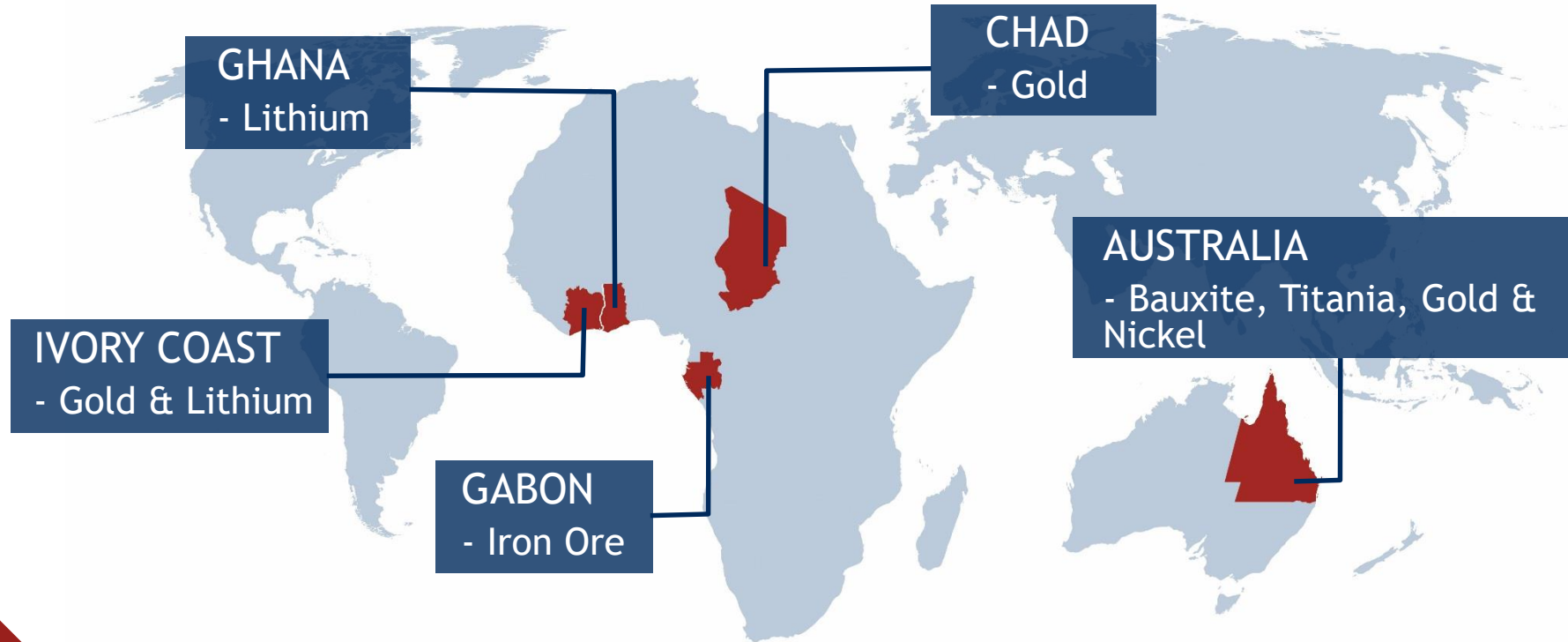
Chief Geologist & Business Development

Geologist; 18 years experience in the resource sector. Previously Managing and Technical Director Tawana Resources; discovery and evaluation of the Mofe Creek iron project, Liberia. Instrumental in the Simandou iron ore project evaluation.



# Where Are We Working?

## Africa focus - Gold & Lithium



Ongoing review of opportunities

# Right DNA for Discovery, Diversity & Growth



## Explorer

- DGR Global Limited - ASX listed
- Project generator, founder and creator of IronRidge
- Project generation, exploration and discovery expertise



## Developer

- Assore Limited - JSE listed
- South African supplier of raw material to the world's steel mills and alloy plants
- South African iron, chrome and manganese mining specialist



## Conglomerate

- Sumitomo Corporation
- Global network encompassing over 66 countries
- A global resource, mining, marketing and trading conglomerate

*Wealth Creation*

Exploration

Discovery

Development

Production

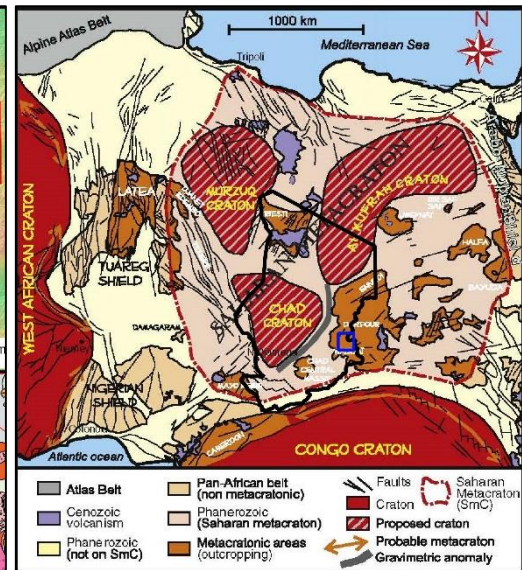
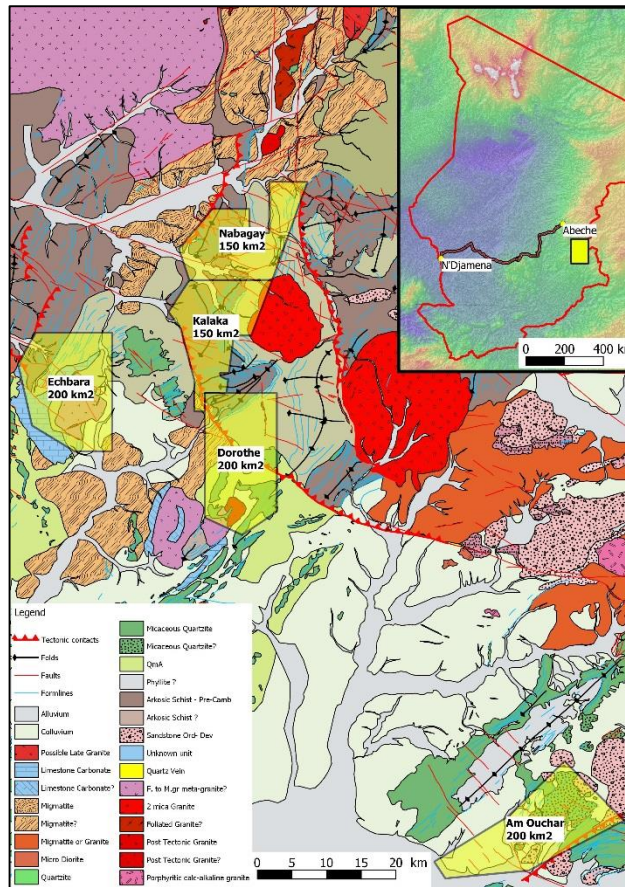
Sales

CHAD - 1<sup>st</sup> Mover Advantage  
Scale Potential



# New Mineralised Province

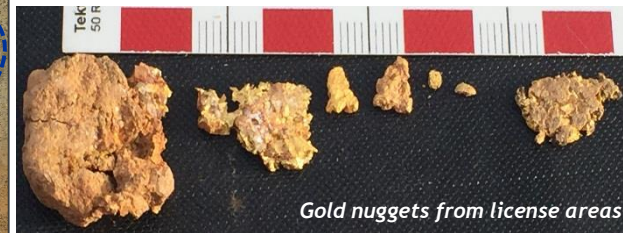
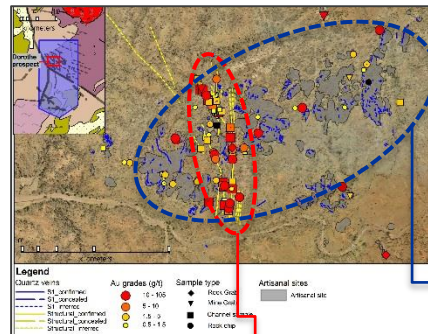
- › Licenses covering 900km<sup>2</sup> of gold mineralized geological structures in the Saharan Metacraton
- › Potential analogue of Intrusion Related Gold Systems ('IRGS'); World Class Tintina Gold Belt, Yukon-Alaska
- › Little or no modern-day exploration; largely forgotten due to oil focus
- › First mover advantage; two advanced gold projects, multiple targets with extensive artisanal gold workings



Artisanal Au beneficiation & sorting

# Dorothe Gold Project

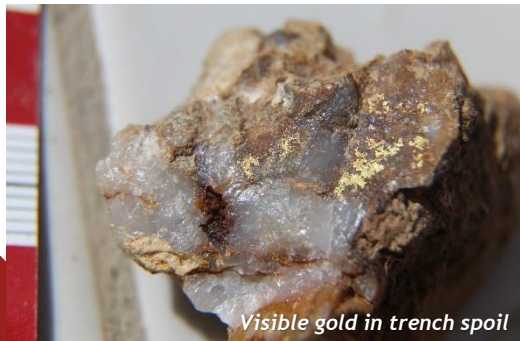
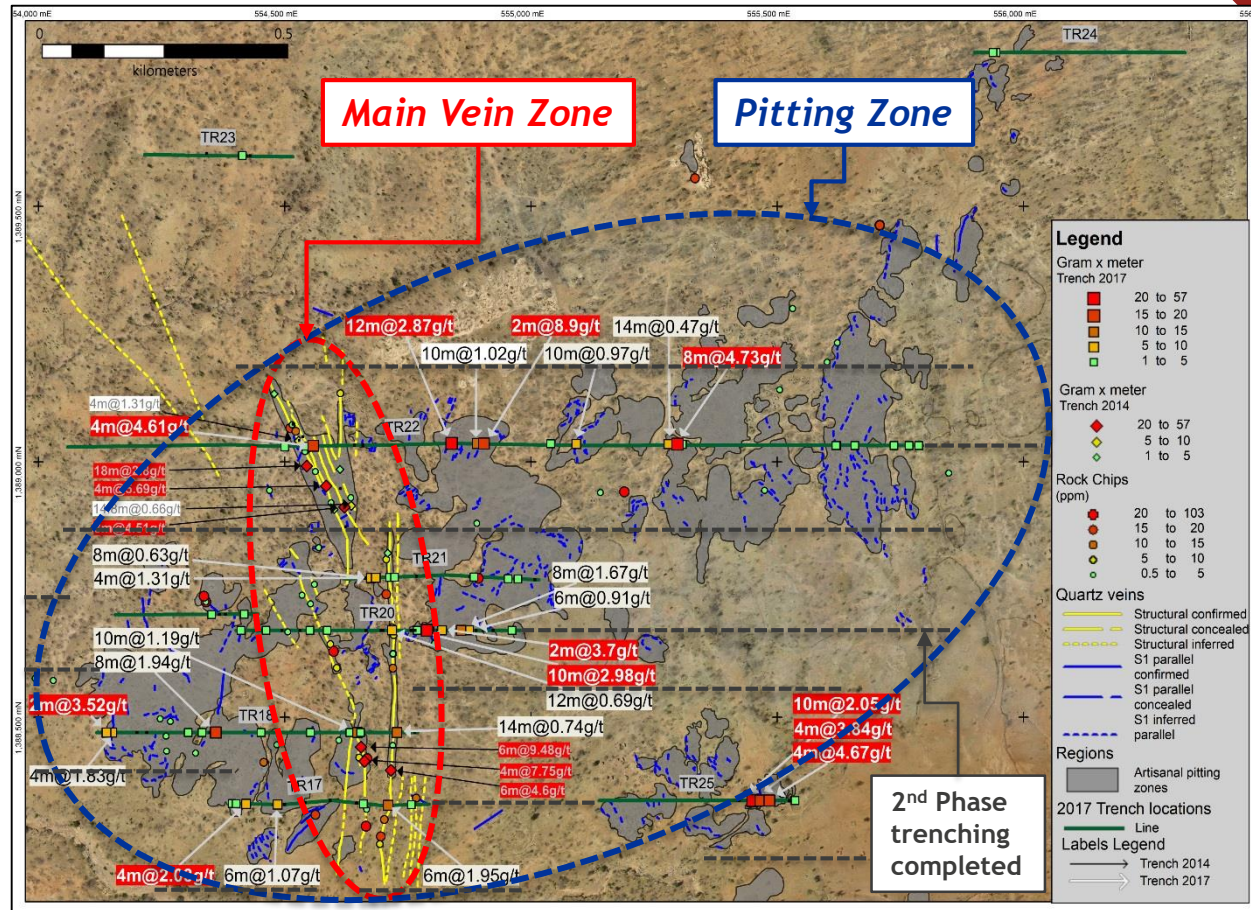
- › 200km<sup>2</sup> exploration license granted
- › 14,474m of trenching completed
- › Extensive artisanal workings
- › Two discrete mineralisation targets:
  - › 3x1km artisanal pitting zone
  - › 1km x 200m gold mineralised vein swarm; possible extensions to 3km
- › Regional airmag survey completed; additional targets identified
- › SRK Perth detailed structural mapping completed; controls on mineralisation better defined
- › Visible gold in quartz veining with nuggets up to 1cm across





# Dorothe Trenching Programmes

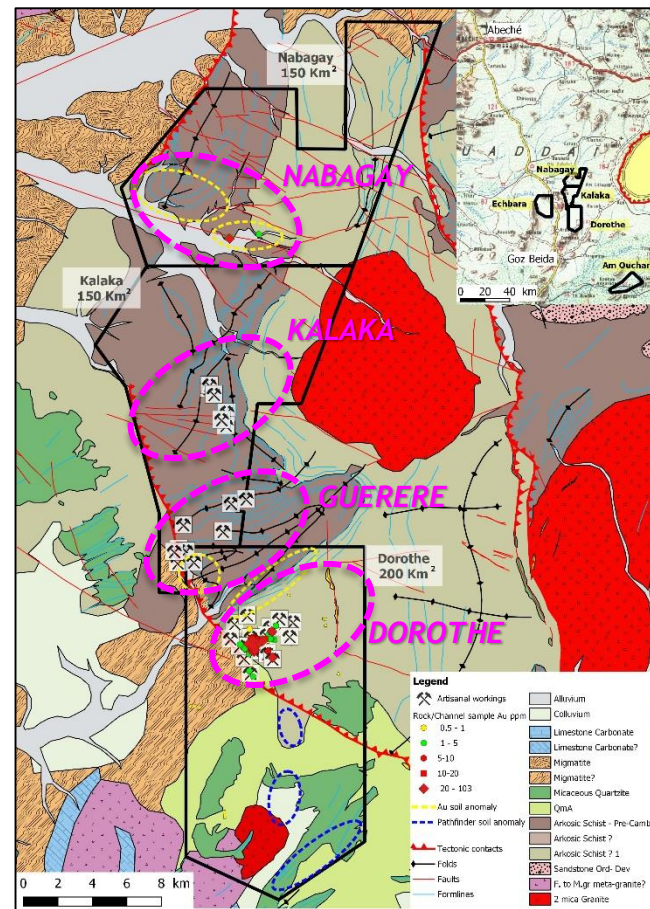
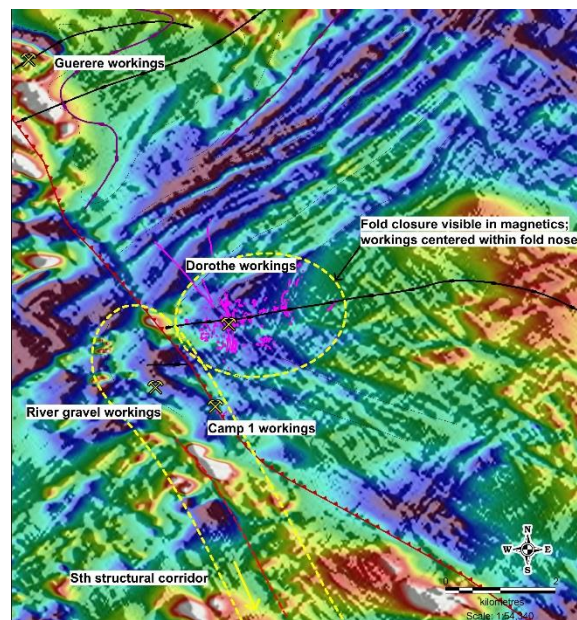
- › Phase 1: 5,204m trenching completed
- › Multiple intersections incl.
  - › **Pitting Zone:** 8m @ 4.7g/t, 12m @ 2.9g/t, 10m @ 2.9g/t, 4m @ 4.7g/t and 2m @ 8.9g/t Au
  - › **Main Veins:** 4m @ 14.1g/t Au, 2m @ 34.1g/t and 1m @ 63.2g/t
- › Phase 2: 9,270m trenching completed; assays pending





# New Tenure & Major Gold Structures Identified

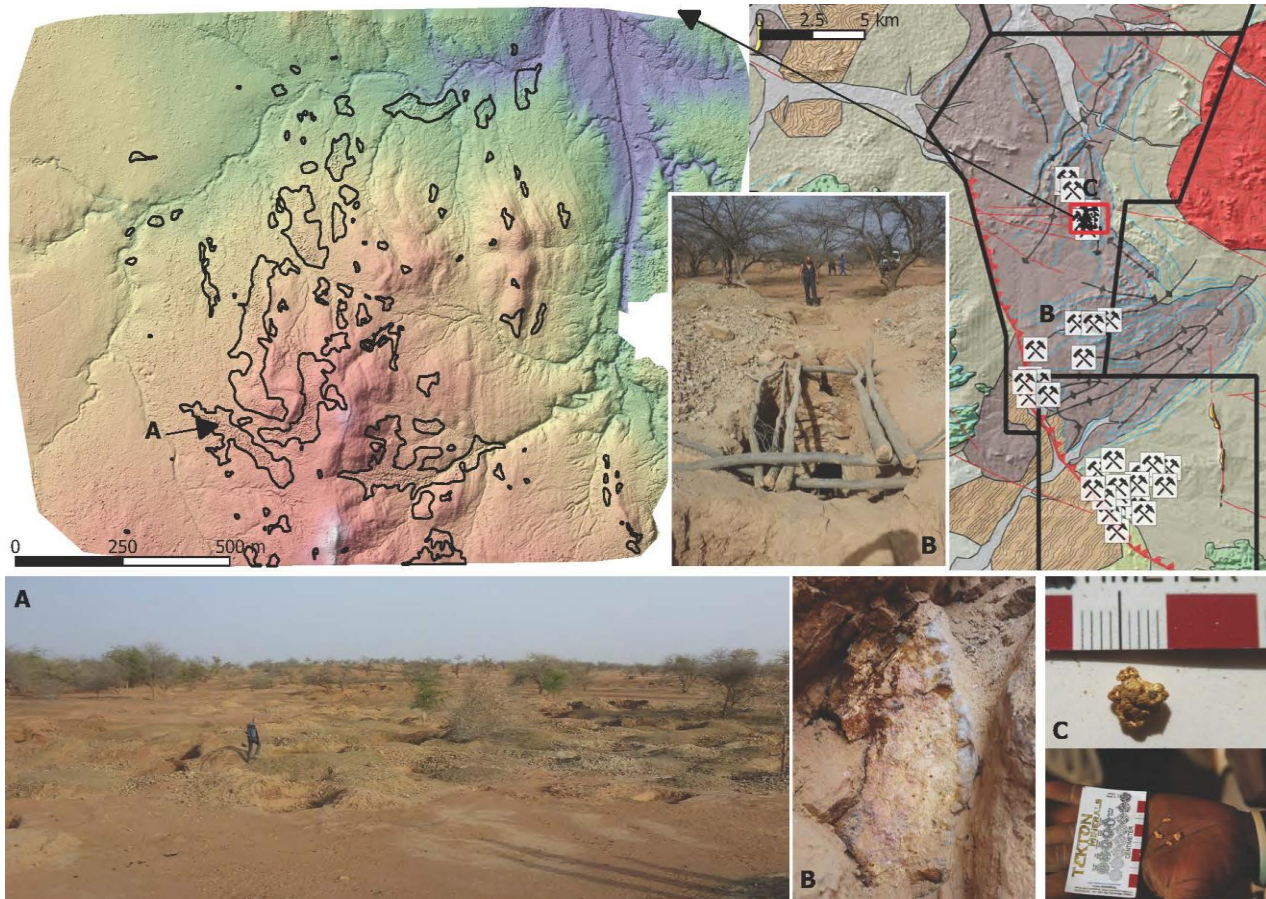
- › Two new licenses granted at Kalaka and Nabagay
- › Favourable structural settings similar to Dorothe
- › 40km strike of prospective gold corridor now secured
- › Multiple artisanal sites discovered at Kalaka and Guerere
- › Anomalous reconnaissance gold rock chips at Nabagay
- › Possible repetitions of Dorothe; structural traps in hanging wall block of Dorothe Shear Zone





# Highly Prospective Kalaka License

- › Extensive artisanal workings over 1x1.5km area
- › Gold nuggets in surface regolith
- › Deeper workings following mineralised veins at Guerere
- › Regional soil sampling and mapping programme underway
- › Potential repetitions of Dorothe mineralised system

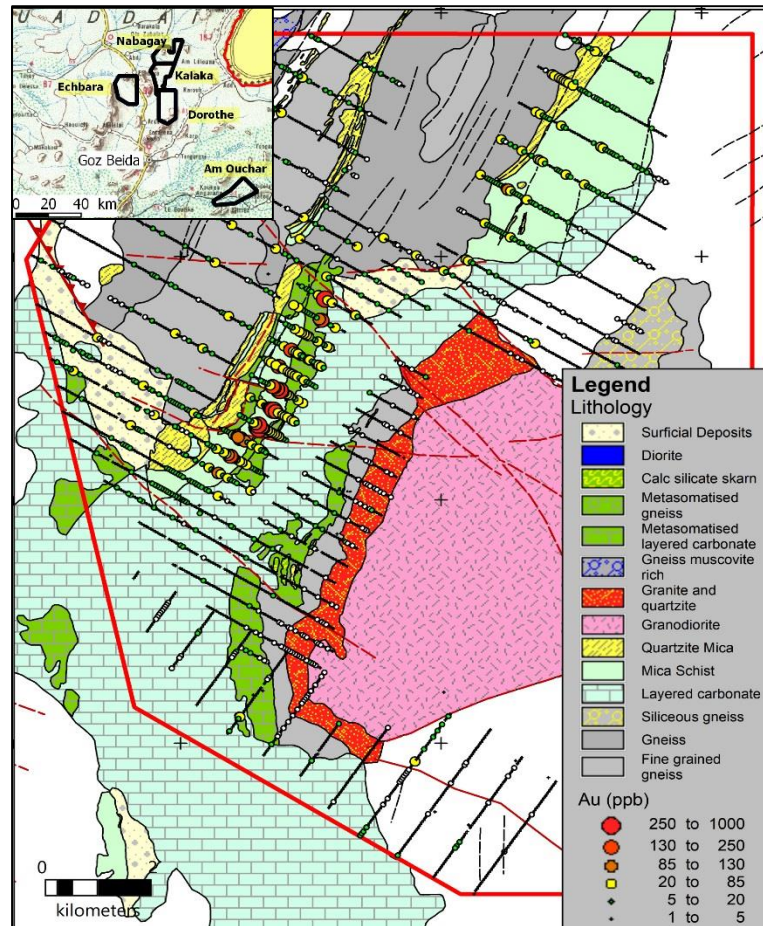


# Additional Projects Echbara & Am Ouchar

- › Historic targets identified by the UN Development Programme
- › Echbara trenching results incl.
  - › 58m @ 1.31g/t, 30m @ 1.25g/t Au by UNDP
  - › 12m @ 2.71g/t by Tekton
- › Am Ouchar trenching results incl.
  - › 20m @ 6.8g/t, 16m @ 4.7g/t and 12m @ 5.7g/t Au
- › Field work ongoing



Artisanal pitting at Am Ouchar





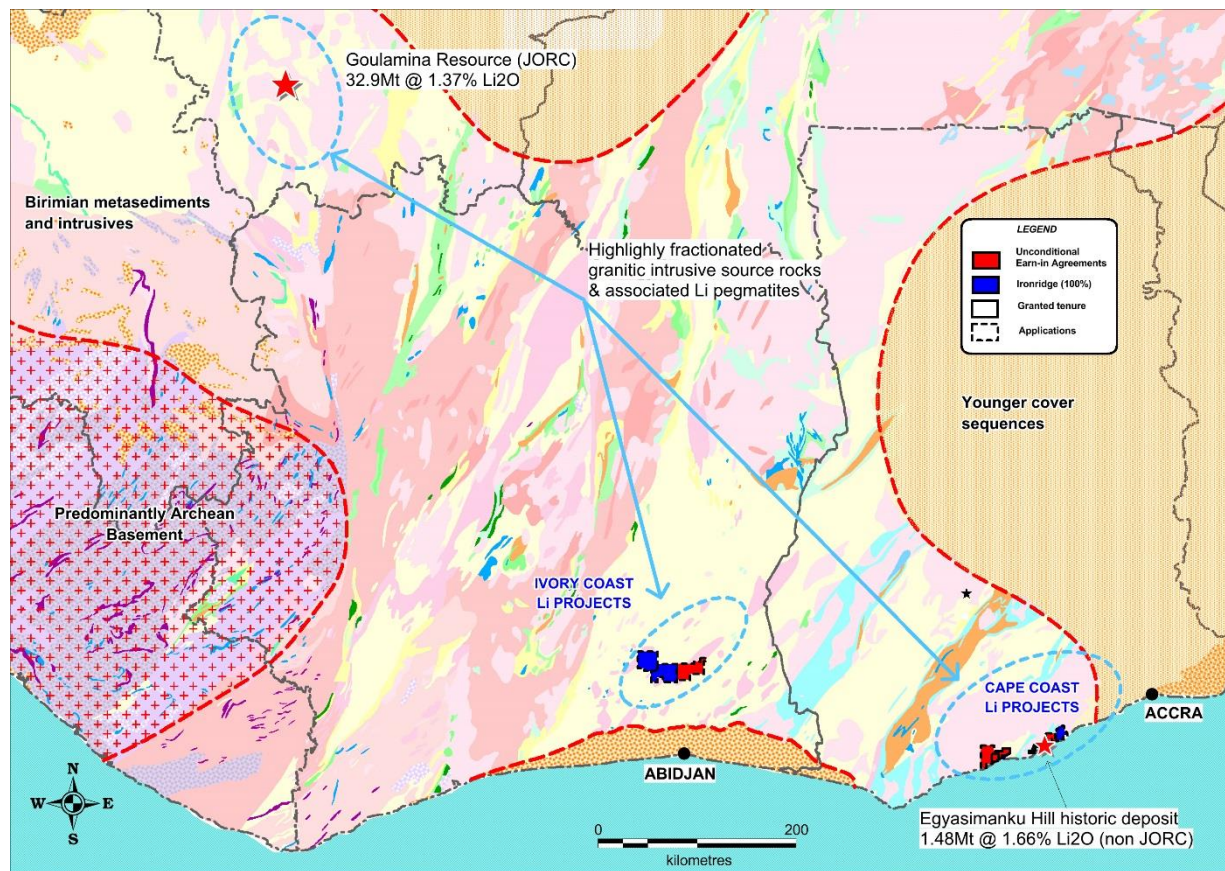
A photograph of two men standing in a mining landscape. The man on the left, wearing a white short-sleeved shirt and khaki pants, is pointing towards the distance. The man on the right, wearing a light-colored long-sleeved shirt and dark pants, is looking in the same direction. They are standing on a dirt path with a large pile of red earth to the left. The background shows rolling green hills under a clear blue sky.

GHANA - Rich Mining History  
Rediscovered Lithium Potential



# West Africa Lithium Frontier

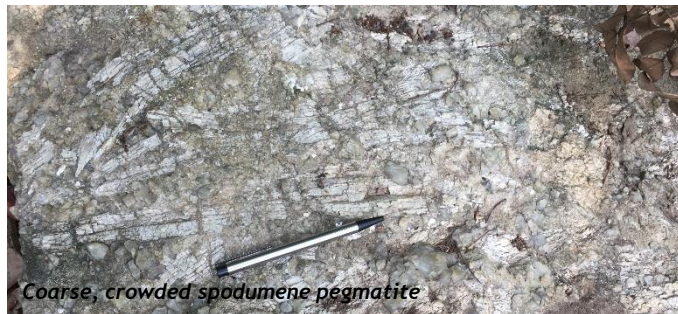
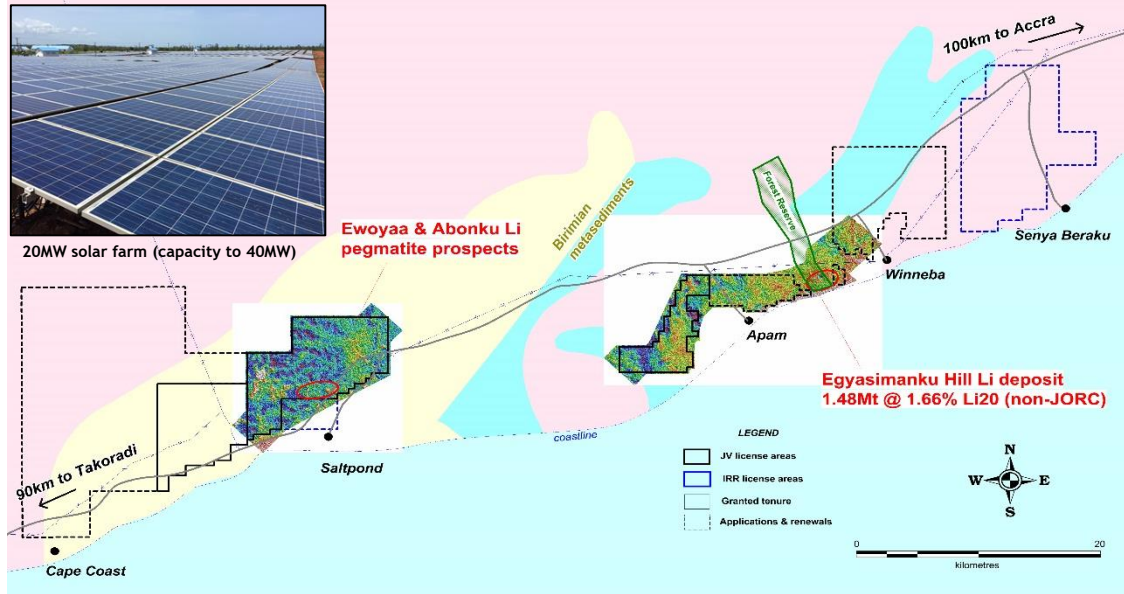
- › Proven big, high-grade Li spodumene pegmatites
- › Significant globally
- › Historical gold focus in the Birimian, yet highly prospective for Li too
- › 1,822km<sup>2</sup> portfolio secured in Ghana and Ivory Coast
- › Portfolio includes:
  - › Exclusive access rights to apply for 1.48Mt @ 1.66% Li<sub>2</sub>O deposit (non JORC)
  - › Sampling results including 40m @ 1.93% Li<sub>2</sub>O





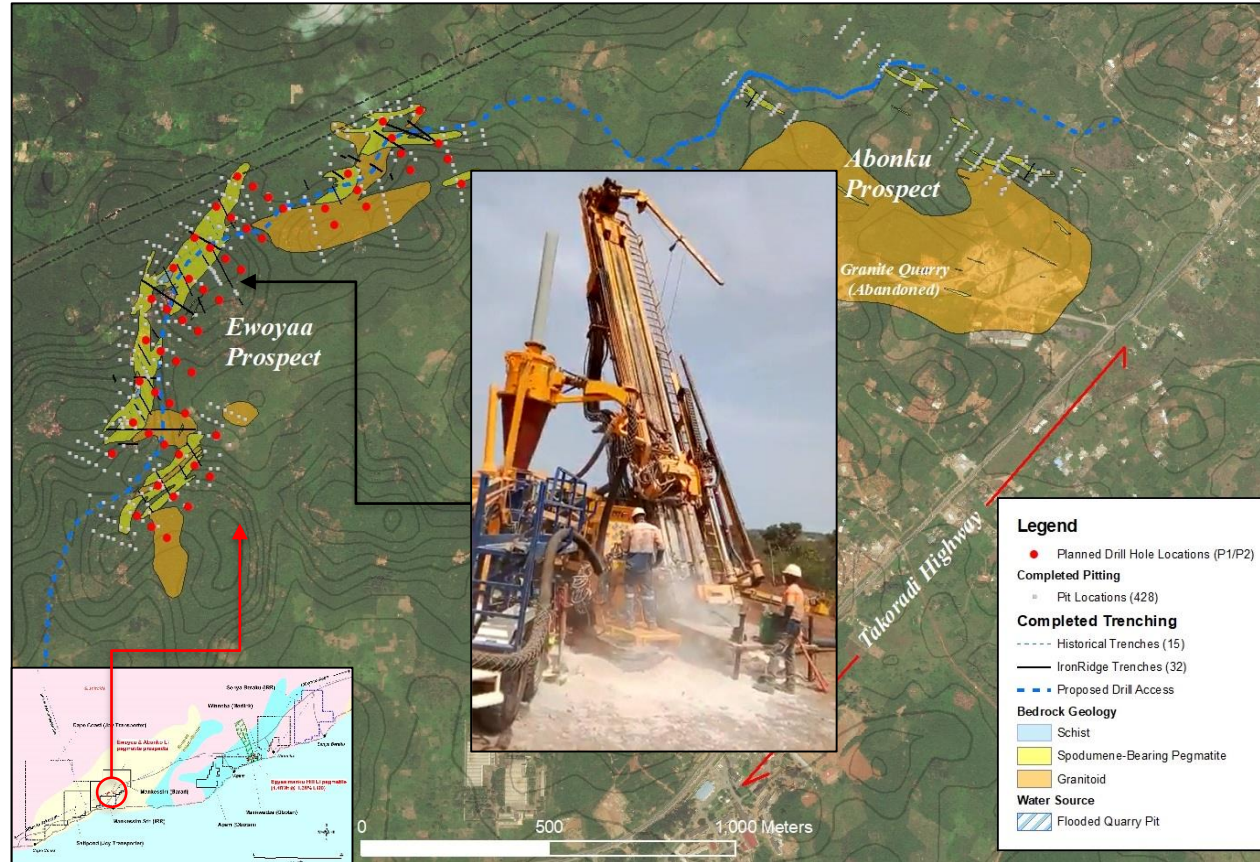
# Cape Coast Lithium Project (70%-100%)

- › 645km<sup>2</sup> land package secured via earn-in and direct application
- › High-grade Li pegmatite opportunities; low sovereign risk, pro-mining Ghana
- › Historical spodumene deposit 1.48Mt @ 1.66% Li<sub>2</sub>O (non JORC)
- › Primary hard rock Spodumene in pegmatite; additional beryllium, Ta-Nb, Sn and Au potential
- › Within 100km of capital Accra and 90km of Takoradi port along bitumen highway



# Ewoyaa Discovery - Drilling Underway

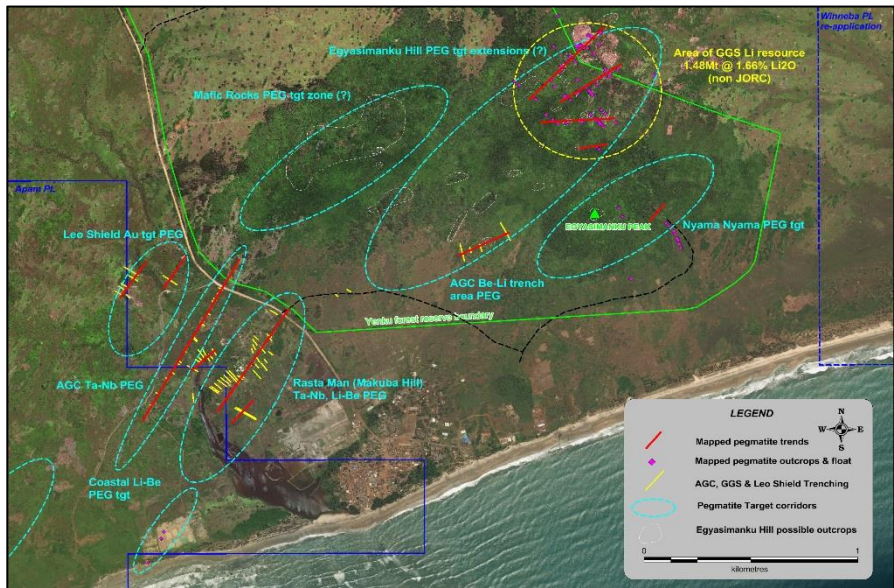
- > Broad & continuous high-grade Li pegmatites in trenching & rock-chips
- > 100m @ 1.57% Li<sub>2</sub>O including 40m @ 1.93% and 15m @ 2.18% Li<sub>2</sub>O in trenching
- > 10m @ 2.41%, 25m @ 2.29%, 25m @ 2.14% Li<sub>2</sub>O in rock chips
- > Coarse grained, crowded spodumene mineralogy
- > Drilling Underway





# Egyasimanku Hill Rediscovered

- › Area of historical works defined on the ground
- › Significant exploration upside within immediate deposit area
- › Spodumene dominant pegmatites observed
- › Li rich, re-discovered pegmatite field



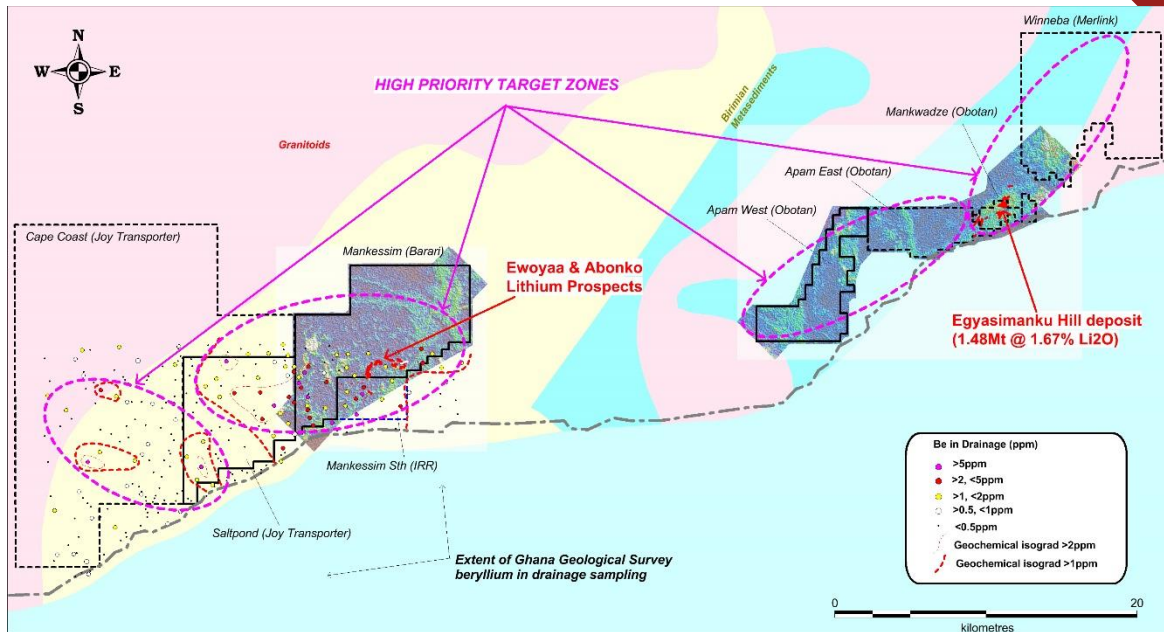
Coarse, crowded spodumene pegmatite outcrop on Egyasimanku Hill



Coarse, crowded spodumene pegmatite outcrop on Egyasimanku Hill

# Exploration Upside

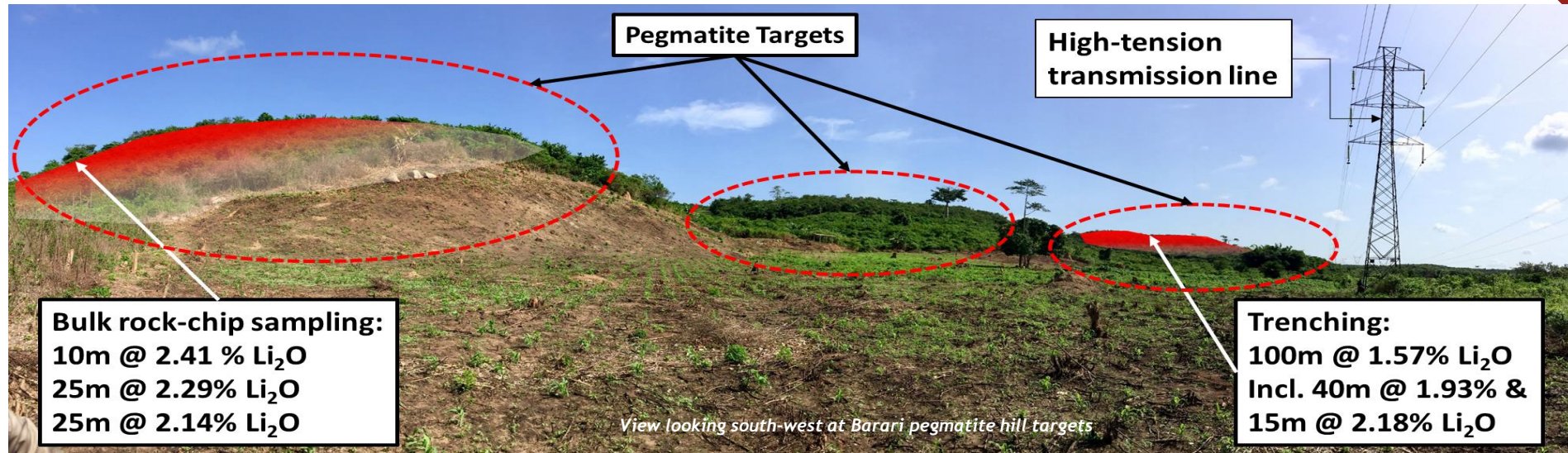
- › High-resolution heli-rad & mag survey completed
- › Historic Be stream sediment anomalies defining pegmatite zones
- › 8 pegmatite bodies reported at Barari; 350-560ft long, 30-80ft wide & 0.5-2.2% Li<sub>2</sub>O
- › Historic Egyasimanku Hill deposit 1.48Mt @ 1.67% Li<sub>2</sub>O (non JORC)
- › Multiple target zones defined



View looking south-west towards Barari pegmatite hills



# Grade, Scale & De-Risked; Lithium Opportunity



- › High-Grade and large scale potential
- › Just one of multiple untested pegmatites in a rediscovered Li field
- › Adjacent to the coast and high-tension transmission line; within 100km of Accra
- › Within 90km of the operating deep sea Takoradi Port
- › Low risk; historic deposit, proximal infrastructure & favourable jurisdiction

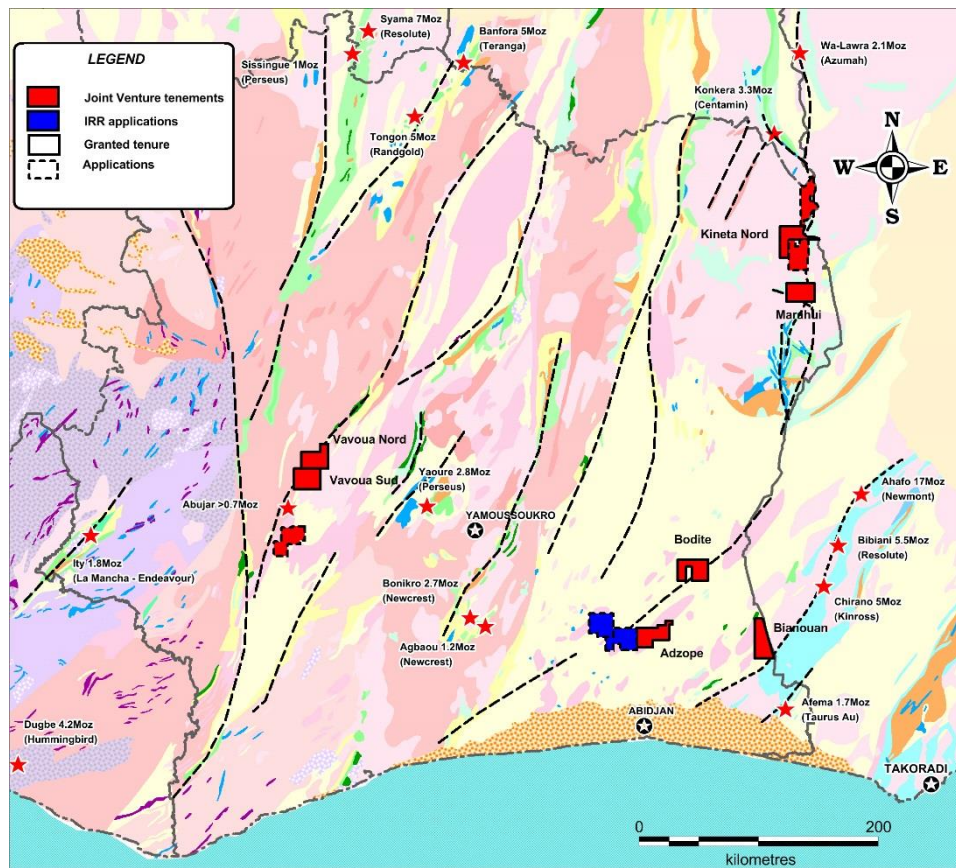


Ivory Coast - Gold Pedigree



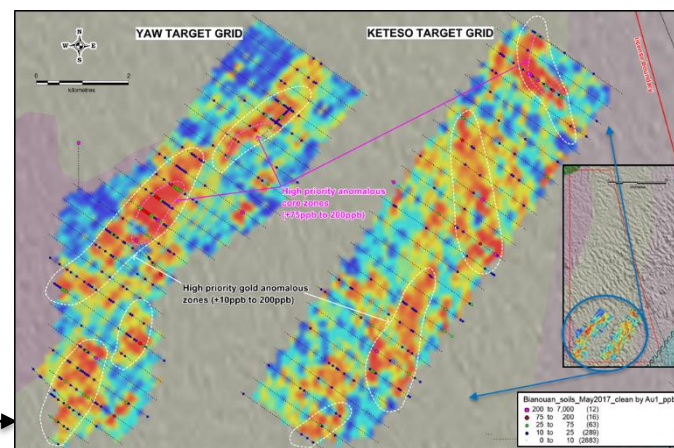
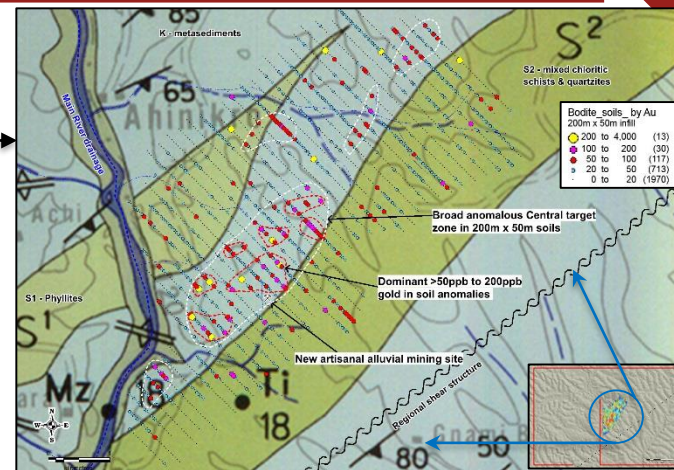
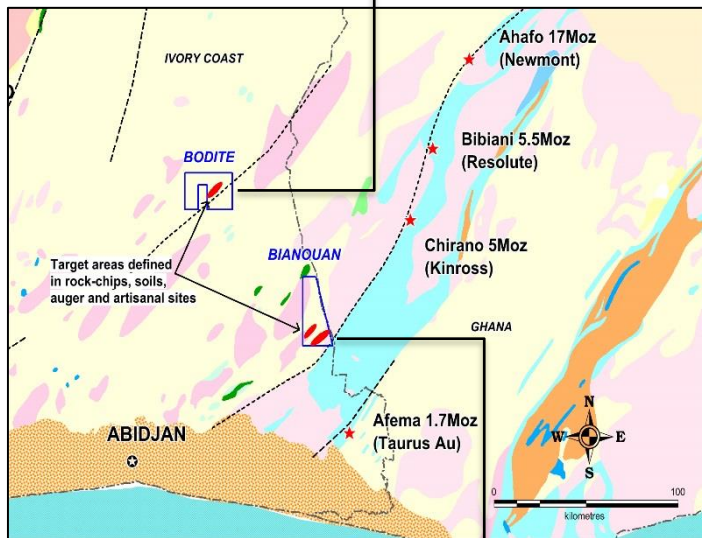
# Ivory Coast - Gold & Lithium Portfolio

- › Access rights secured to 3,235km<sup>2</sup> over 9 licenses and applications (not including 1,177km<sup>2</sup> Li portfolio)
- › Country underlain by prolific Birimian Greenstone Belts
- › Underexplored yet hugely prospective
- › Major regional structures with operating mines; Tongon 5Moz, Yaoure 2.8Moz, Bonikro 2.7Moz
- › Majors & mid-tiers actively exploring (Randgold, Newcrest, Centamin & Rolute)



# Bianouan & Bodite Gold Projects

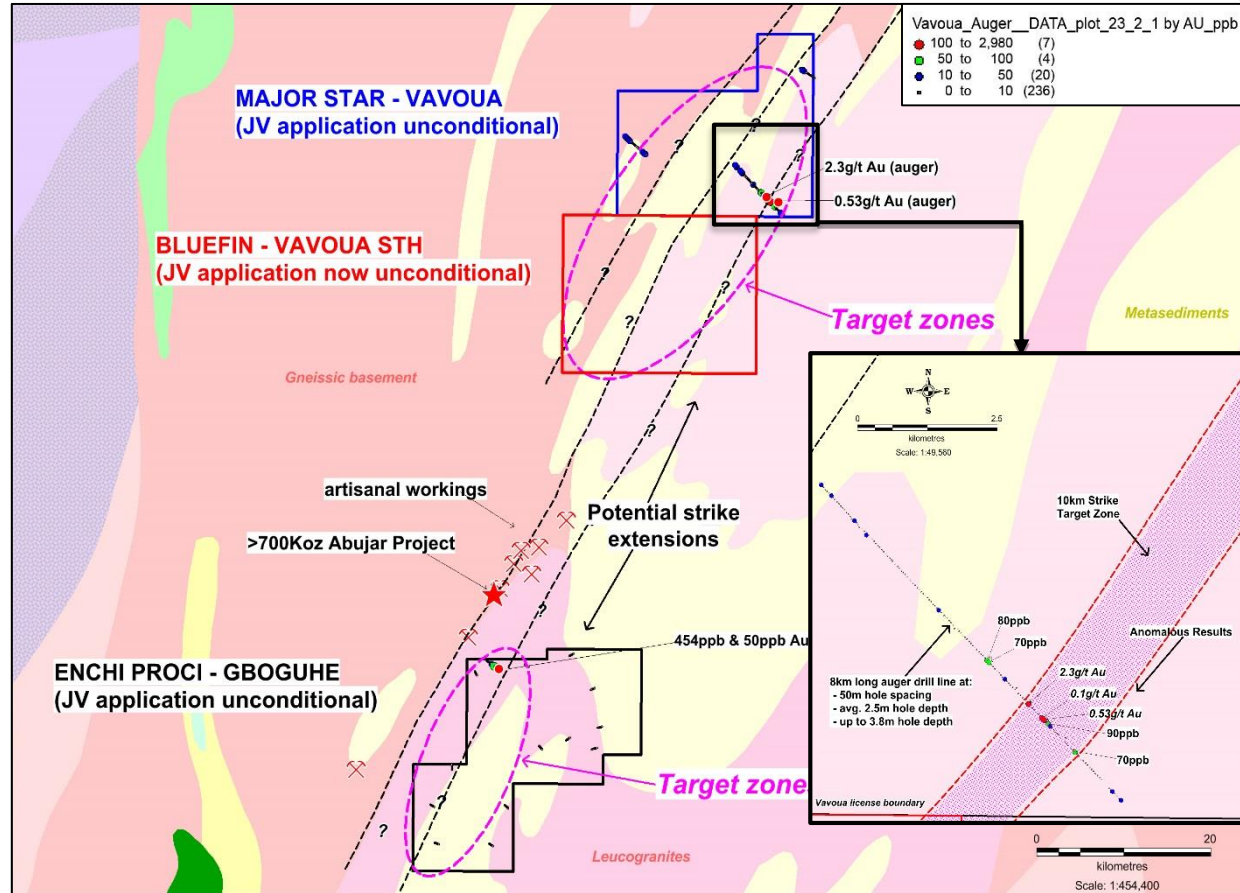
- Along strike from c.17Moz, 5.5Moz and 5Moz deposits
- Target areas defined in rock chips, soils & artisanal sites
- Bianouan trenching, pitting and extensional soils completed
- Bodite auger drilling, pitting and soils underway





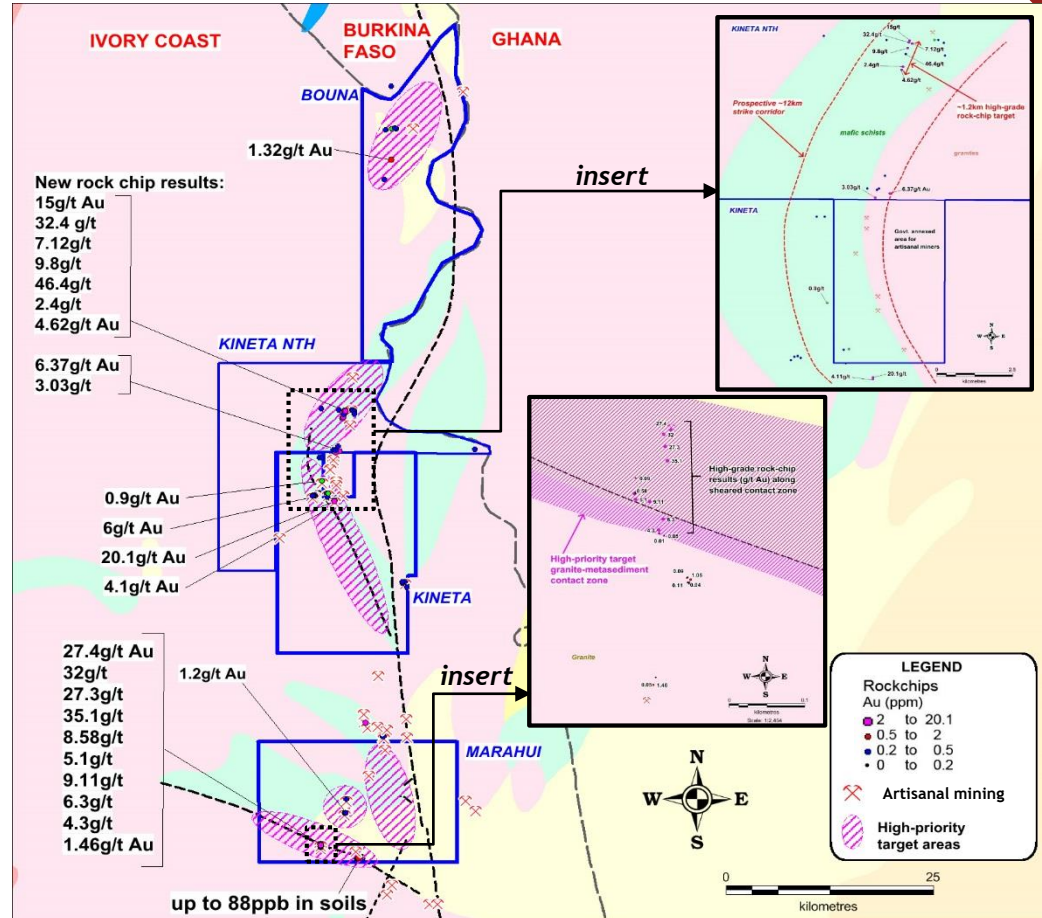
# Vavoua Project Area

- > 600km<sup>2</sup> ground holding
- > Along strike of significant and growing 700Koz Abujar Project (3<sup>rd</sup> party, JORC compliant)
- > Highly anomalous reconnaissance auger drilling results:
  - > 2.3g/t Au
  - > 0.53g/t Au
- > High priority target areas defined
- > Airmag survey planned



# Kineta Project Area

- › Artisanal workings defined over 8km strike
- › Along strike from Konkera (3.3Moz) and Wa-Lawra (2.1Moz) deposits
- › High-grade rock-chip results
- › Soils completed at Kineta North; assays pending



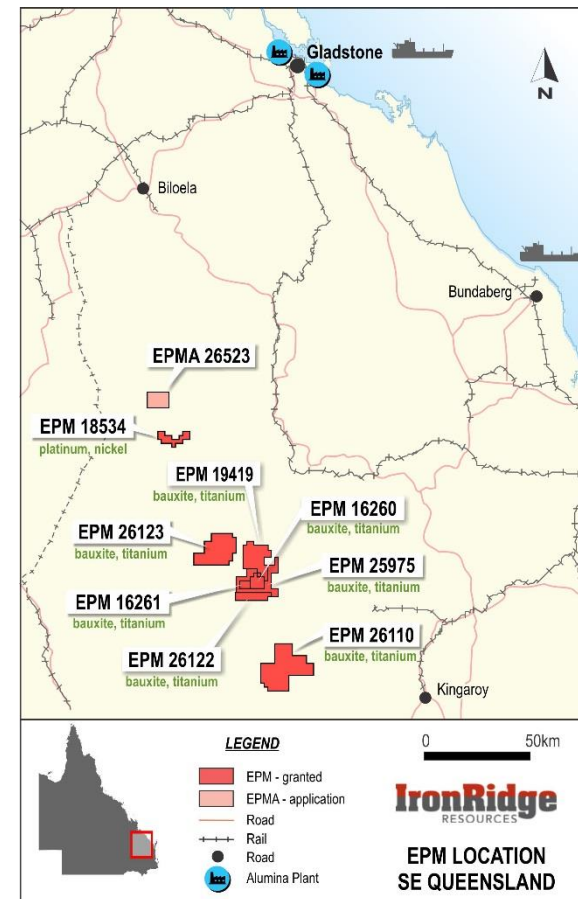


A wide-angle photograph of an industrial port facility. In the foreground, there is a large, rocky, brownish terrain. The middle ground shows a busy port with several large cranes, shipping containers, and industrial buildings. The background features a large body of water with a long pier extending into it, and a few ships visible in the distance under a cloudy sky.

**AUSTRALIA - Low Sovereign Risk**  
**GABON - Iron Ore Frontier**

# Monogorilby Bauxite/Titania (100%)

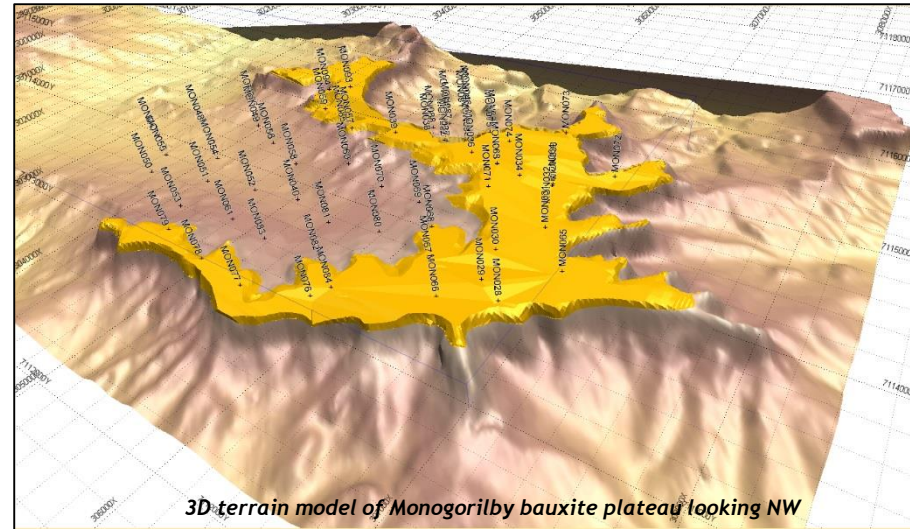
- › New bauxite Province - significant scale potential
- › Well located <55km from a dormant rail system with connections to the Port of Bundaberg
- › Large land holding; 967km<sup>2</sup> granted and under application
- › Additional titanium and nickle/cobalt potential





# Monogorilby Bauxite Maiden Resource

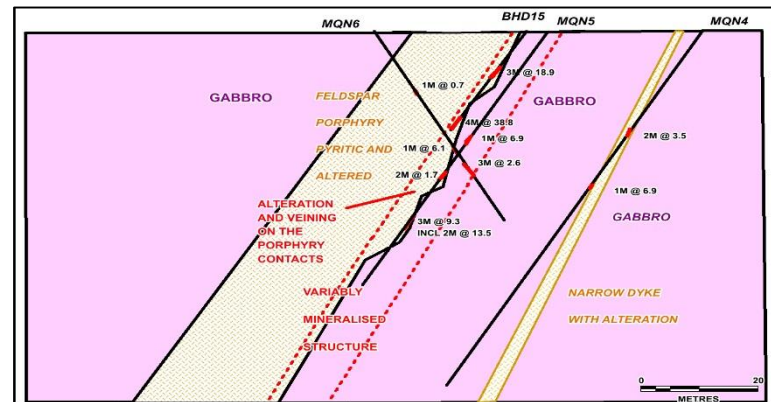
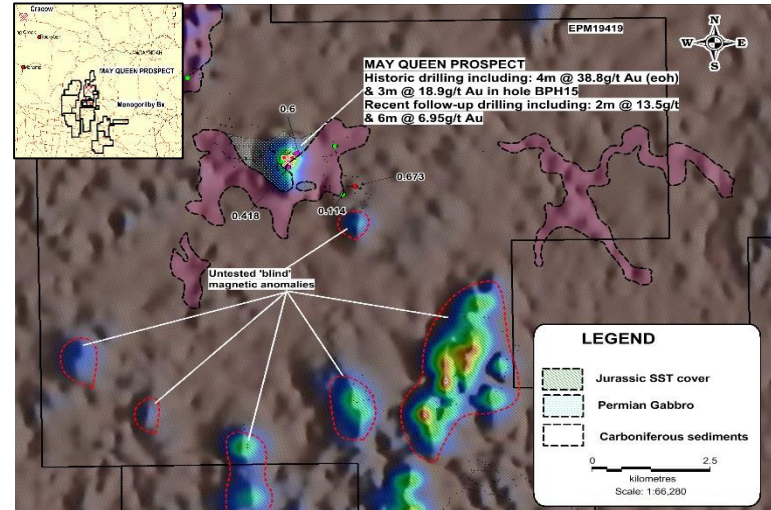
- > Maiden Resource 54.9Mt @ 37.5% total Al & 8.5% total Si
- > Average 7m to 14m thick bauxite profile from surface
- > Mineralised plateaus; low stripping ratios implied
- > Predominantly gibbsite mineralogy; higher value implied
- > Preliminary scouting metallurgical test-work indicates potential to beneficiate:
  - > Good to premium quality DSO (35-40% available alumina, 1-3% reactive silica) at 5-85% mass recoveries through simple crushing, screening and scrubbing of the 1 to 3m thick surface duricrust
  - > Fair quality DSO (<30% available alumina, >5% reactive silica) at 38% mass recovery through simple crushing and screening of the sub-surface bauxite profile
- > High-grade Ti (average 3.8-5% TiO<sub>2</sub>) occurs within bauxite profile; best at surface with potential scope for early start-up Ti concentrate product



MONOGORILBY RESOURCE (>30% Tot Al <sub>2</sub> O <sub>3</sub> , <10% Tot SiO <sub>2</sub> and >18.5% LOI)										
Resources Class	Tonnes	Avl Al <sub>2</sub> O <sub>3</sub> %	Tot Al <sub>2</sub> O <sub>3</sub> %	Rx SiO <sub>2</sub> %	A:S	LOI%	Tot SiO <sub>2</sub> %	Fe <sub>2</sub> O <sub>3</sub>	TiO <sub>2</sub> %	V%
Measured	-	-	-	-	-	-	-	-	-	-
Indicated	-	-	-	-	-	-	-	-	-	-
Inferred	54,894,438	28.02	37.5	7.9	3.6	20.9	8.5	23.9	5.2	0.062
<b>Totals</b>	<b>54,894,438</b>	<b>28.02</b>	<b>37.5</b>	<b>7.9</b>	<b>3.6</b>	<b>20.9</b>	<b>8.5</b>	<b>23.9</b>	<b>5.2</b>	<b>0.062</b>

# May Queen Gold Project (100%)

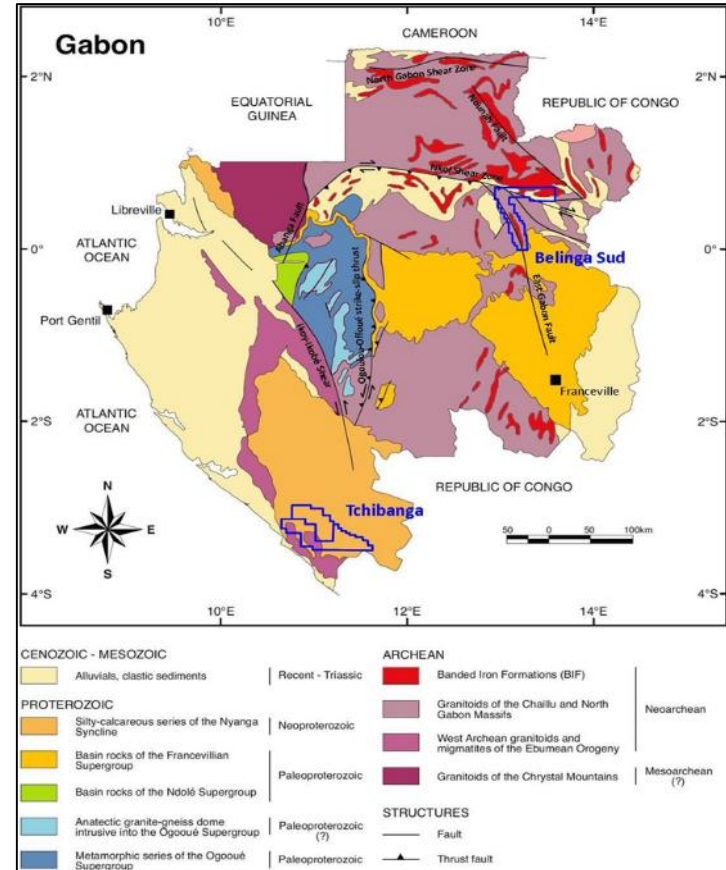
- › Gold intersections in drilling incl.:
  - › 4m @ 38.8g/t Au (EOH) & 2m @ 73.4 g/t Au (incl. 1m @ 145g/t Au) in historical drilling
  - › 6m @ 6.95g/t & 2m @ 13.5g/t Au Au in recent drilling
- › Epithermal & skarn type textures along intrusive contacts
- › Discrete magnetic anomaly spatially associated with drill intersections
- › Additional untested anomalies along strike to the SE under 20-50m of cover





# Gabon - Iron Ore Country

- › Tchibanga Project (1,977km<sup>2</sup>):
  - › Neoproterozoic iron formation
  - › Ferruginous capping over hematitic schists
  - › Avg 45.2% Fe moderate contaminants
  - › Prime location adjacent to barging port
- › Belinga Sud Project (1,976km<sup>2</sup>):
  - › Archean/Palaeoproterozoic itabirites
  - › Along strike from giant Belinga deposit
  - › Within 100km of operational railway
  - › Avg 40-55% Fe moderate contaminants
  - › 13km iron formation mapped to date



The word 'Appendices' is written in a large, white, outlined font, centered over a landscape photograph of a dry, hilly area with sparse vegetation and a clear blue sky.

Appendices

The contact information for Iron Ridge Resources is listed in white text on a red background. It includes the company name, address, phone number, and email address.

**Iron Ridge Resources**

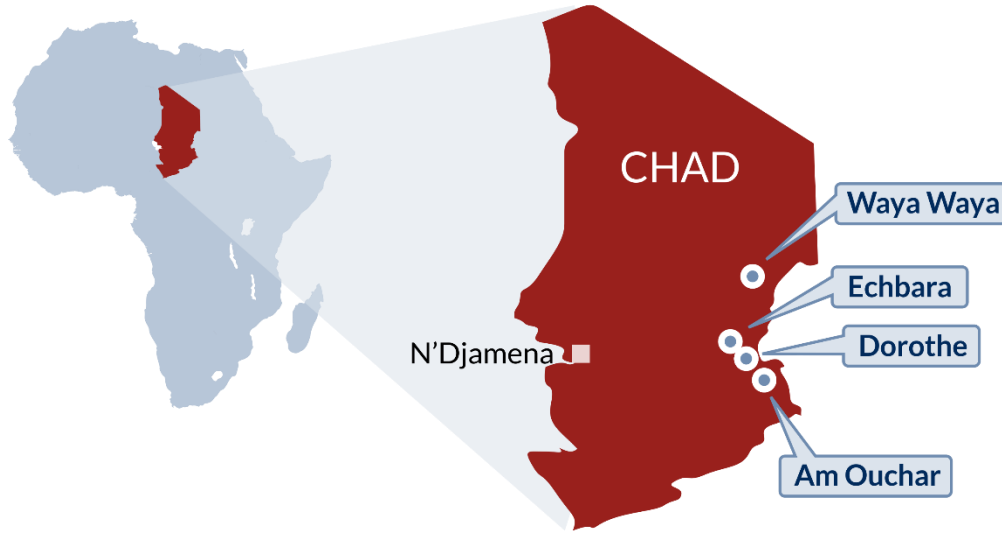
Level 27, 111 Eagle Street  
Brisbane QLD 4001, Australia

P +61 7 3303 0610

E [info@ironridgeresources.com.au](mailto:info@ironridgeresources.com.au)



# Chad - Country Profile & Project Location



**Population**  
13.6 million



**Area**  
1.2 million km<sup>2</sup>



**Language**  
French and Arabic



## GDP

US\$2,500 GDP per capita p/a  
Projected economic growth  
of 5.9% (2020)  
Member of the OHADA and EITI



## Currency

Central African Franc (CFA)



## Resources / Commodities

Total, Exxon, Chevron and  
Glencore active in Chad for  
decades

Oil producer and refiner for  
domestic and international  
markets

# Chad - Pro-Mining Investment Framework

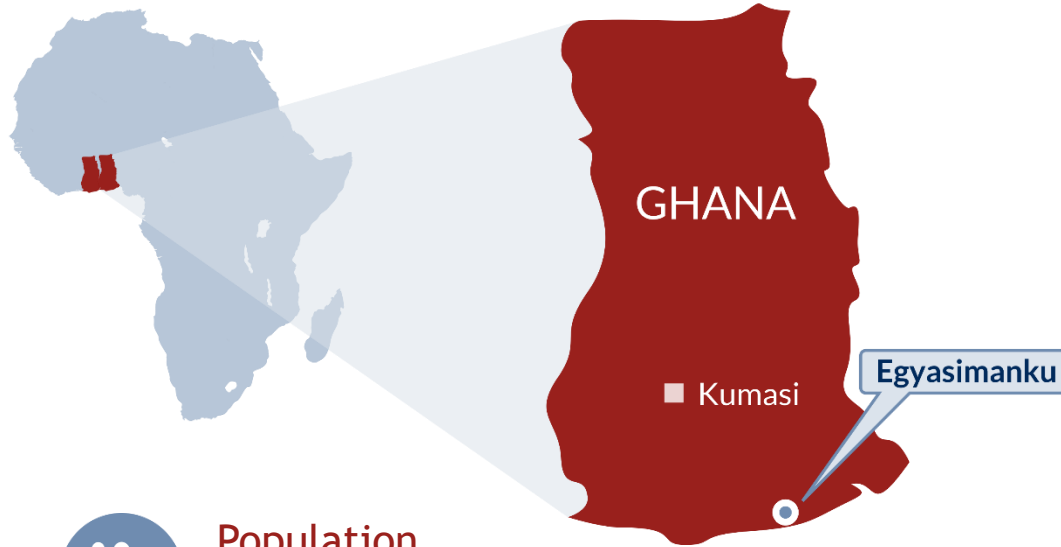
## Attractive Mining Code and investment framework

- › Mineral exploration licenses granted for 5 years
- › Renewable twice for a total 15 year period
- › Mining licenses granted for a 25-year term and renewable
- › 10-year tax holiday
- › 35% Corporate tax rate
- › The State has the right for a 10% free carry and 2% royalty
- › Commercial terms negotiable





# Ghana - Country Profile & Project Location



## Population

25.7 million



## Area

238,000 km<sup>2</sup>



## Language

English



## GDP

US\$4,300 GDP per capita

Projected economic growth  
of 5% (2020)

Member of the EITI



## Currency

Cedi



## Resources / Commodities

Cocoa, Gold  
Agriculture, Oil & Gas

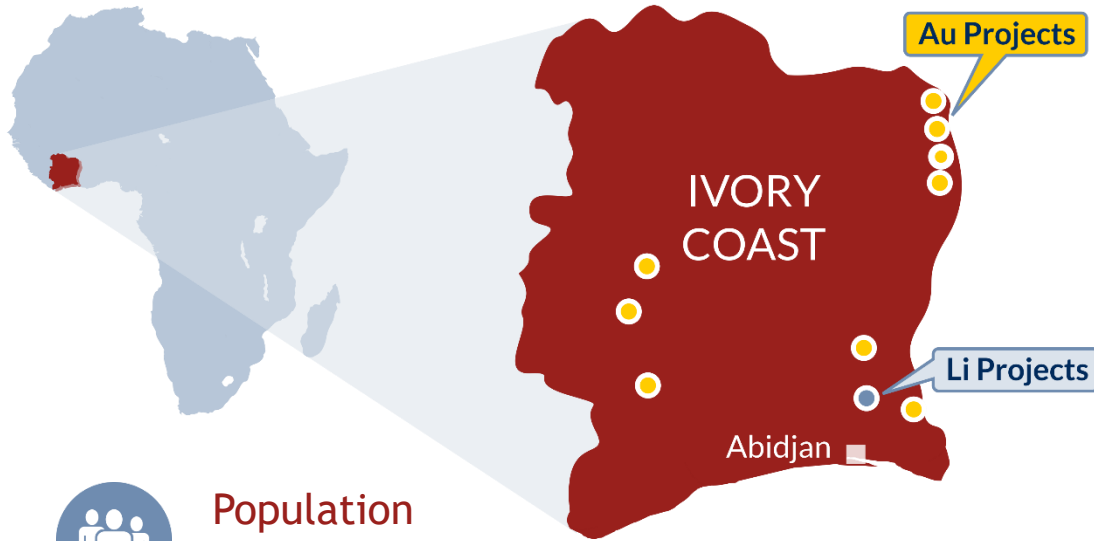
# Ghana - Pro-Mining Investment Framework

- › Mineral Rights, Licenses & Permits:
  - › Reconnaissance Licence - 1 year and renewal for a further 1 year
  - › Prospecting Licences - 3 years and 2 x 3 year extensions
  - › Mining licenses - Up to 30 year term and renewable for a further 30 year term
- › State Carried Interest - 10% free carry with up to 15% contributing
- › 10-year tax holiday (economic free zones)
- › 35% Corporate tax rate
- › 5% royalty
- › Commercial terms negotiable





# Ivory Coast - Country Profile & Project Location



**Population**  
20.6 million



**Area**  
322,500 km<sup>2</sup>



**Language**  
French



## GDP

US\$3,300 GDP per capita  
Projected economic growth  
of 7.5% (2020)  
Member of the EITI



## Currency

Central African Franc (CFA)



## Resources / Commodities

World's largest producer of  
cocoa beans  
Diversified economy; mining &  
agriculture

# Ivory Coast - Pro-Mining Investment Framework

- › Mineral Rights, Licenses & Permits:
  - › Exploration Permits - 4 years and 2 x 3year extensions with  $\frac{1}{4}$  relinquishment
  - › Mining Permits - Granted for life of mine, up to 20 year term and renewable in further 10 year allotments
- › State Carried Interest - 10% free carry and up to 15% contributing
- › 25% Corporate tax rate
- › Ad valorem sliding scale royalties
- › Commercial terms negotiable

