

**Illustrations Accompanying the Announcement by African Mining and Exploration plc., entitled
 "Update on the Company's exploration activities" April 12 2012**

Figure 1. Geophysical Map of the Karan Permit showing completed RC and planned RAB holes.

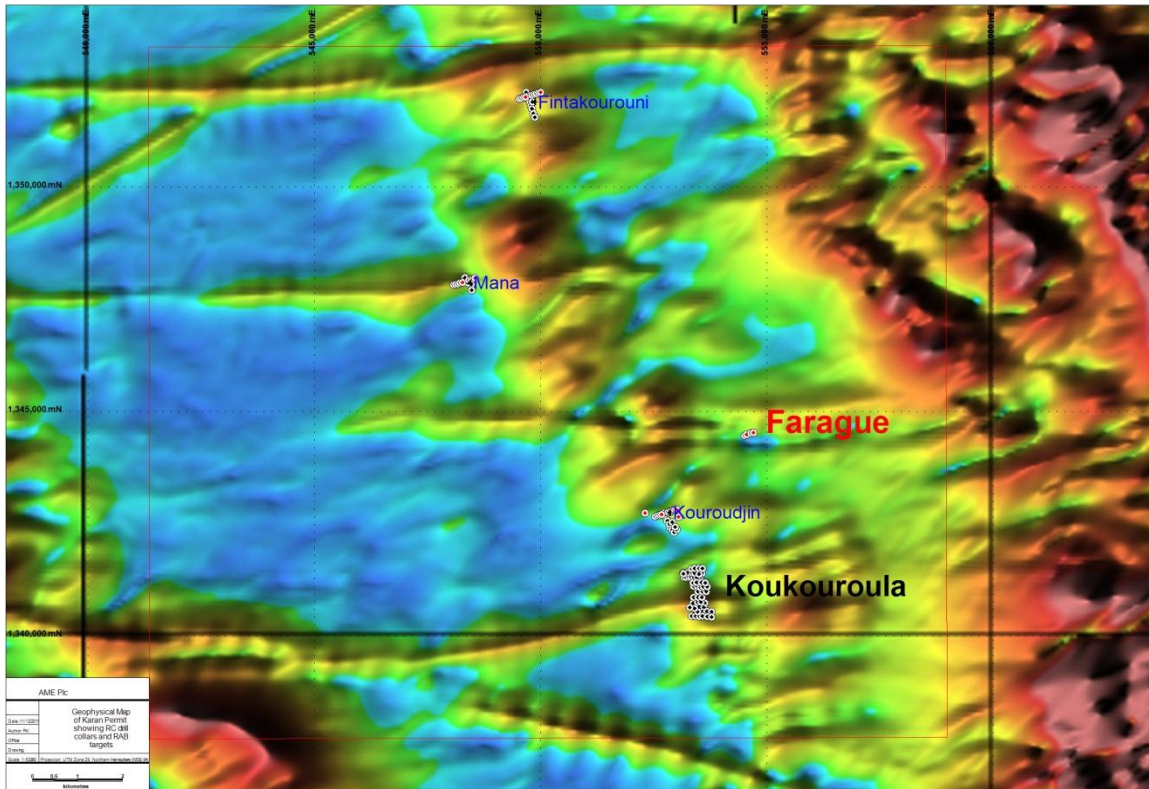


Figure 2. Cross section showing the chargeability image along line 3 with RC11KDJ001 and 012 plotted on the western chargeability anomaly.

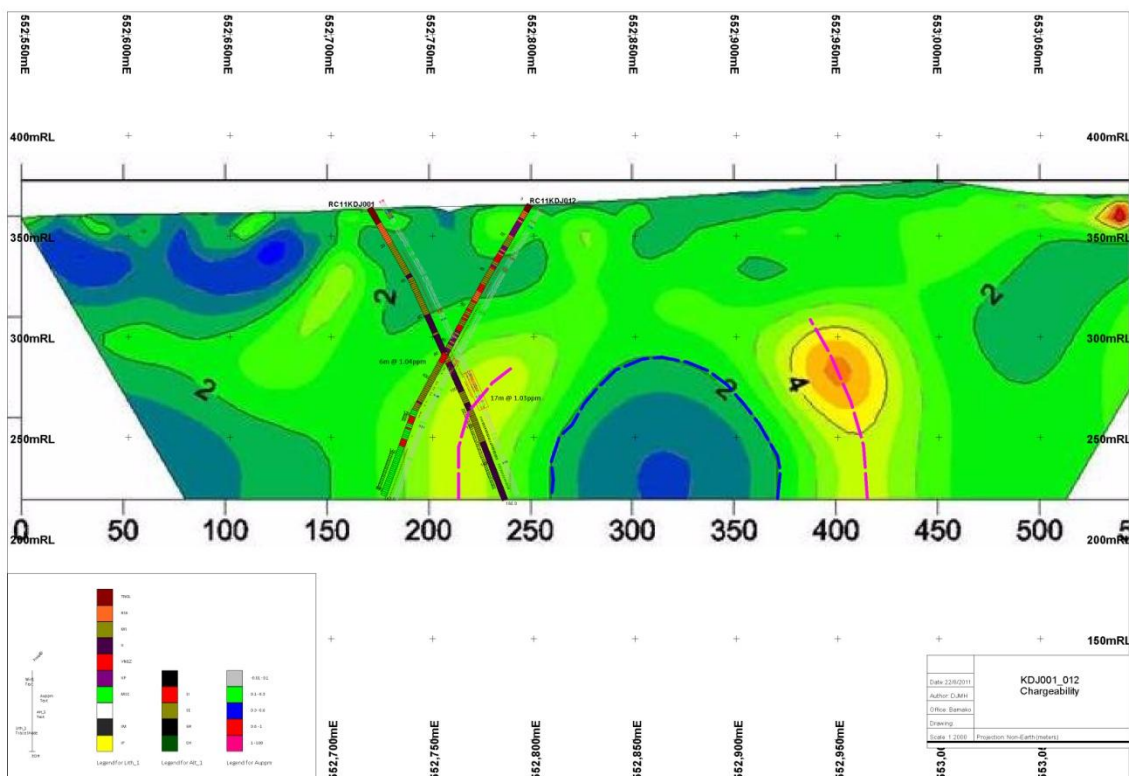


Figure 3. Topographic map with Diatissan Permit outlined and the four RAB drilling targets. (Key: 1 & 2 - trenches with quartz stock work and anomalous gold values; 3 - a possible tourmaline sandstone unit; and 4 - a distinct ground magnetometer survey anomaly.)

