

Integrating computational power and biology to discover life-transforming medicines



**Interim results for six months ended
31 July 2021**

**Successful RNAi Platform
Development**

October 2021



Legal Disclaimer



Forward looking statement

This document is being provided for the sole purpose of providing the recipients with background information about the business of e-therapeutics plc (the Company).

The information, statements and opinions contained in this document do not constitute a public offer under any applicable legislation or an offer to sell or solicitation of any offer to buy any securities or financial instruments or any advice or recommendation with respect to such securities or other financial instruments.

This document contains forward-looking statements including (without limitation) statements containing the words “believes”, “expects”, “estimates”, “intends”, “may”, “plan”, “will” and similar expressions (including the negative of those expressions). Forward-looking statements involve unknown risks, uncertainties and other factors which may cause the actual results, financial condition, performance or achievements of the Company, or industry results, to be materially different from any future results, performance or achievements expressed or implied by those

forward-looking statements. Given these uncertainties, you are cautioned not to place any undue reliance on those forward-looking statements. The forward-looking statements contained in this document are made on the date of this document. The Company and its directors are not under any obligation to update those forward-looking statements in this document to reflect actual future events or developments.

This document (including the information in this disclaimer) does not constitute an offer, invitation or recommendation to subscribe for or purchase any security. Neither the document, this disclaimer nor anything contained in them forms the basis of any contract or commitment. No representation or warranty, express or implied, is or will be made in relation to the accuracy or completeness of the information in this document and all and such responsibility and liability is expressly disclaimed.




This document shall not exclude any liability for, or remedy in respect of, fraudulent misrepresentation.

Company Overview





Integrating computational power and biology to discover life-transforming medicines


Ability to model human biology and interrogate complexity for better and faster drug discovery

- Experimentally validated computational platform centered around network biology
- Increased translatability and improved probability of success
- Third party validation    Top5 Pharma

Competitive proprietary RNAi platform developed. Convergence with computational platform to rapidly identify and prosecute novel targets to unlock further value

 Experienced leadership and growing **multi-disciplinary team**. Currently 34 FTE

 **Scope for future partnerships**, across computational and RNAi platforms

 **Well-funded** following recent £22.5m capital raise

Highlights (incl. post period)



Significantly strengthened cash position to facilitate a number of initiatives, expanding the Company's platform capabilities and acceleration of the development of in-house RNAi pipeline

RNAi platform development

- Successful proprietary **GalNAc-siRNA platform developed** and characterised. Equivalent performance to leading platforms demonstrated
- **11 patent** applications filed to protect innovative GalNAc-siRNA construct designs

Computational platform – zooming into hepatocytes

- **Hepatocyte Knowledge Graph** created and ambitious experimental omics data strategy underway
- Expanded **target identification** focus and creation of tailored computational applications in hepatocytes and RNAi
- Increased **automation and cloud computing**

Collaborations – further validation of our computational platform

- **Galapagos collaboration:** Hit compounds successfully identified and 3 milestone payments received during the period. Collaboration active and hits being further investigated. Scope for further milestones through pre-clinical, clinical and commercial

Corporate

- Successful **£22.5m gross fund raise** from new and existing shareholders
- Commenced trading on **OTCQX Best Market** in the U.S. – important step to broaden shareholder base
- **Board and leadership** changes and significant increase in scientific staff

Financial Summary: Six months ended 31 July 2021



	Six months ended 31 July 2021	Six months ended 31 July 2020
Revenue	£0.5m	£0.04m
Operating loss	£3.5m	£2.7m
Cash and cash equivalents	£31.6m	£15.1m*
R&D	£2.5m	£1.2m

Financial Highlights

- **Strengthened financial position** following successful fund raise of £22.5m gross
- Continued to carefully manage the underlying cash burn
 - focusing on generating income and achieving external commercial validation with our partners and;
 - investing in a new RNAi platform

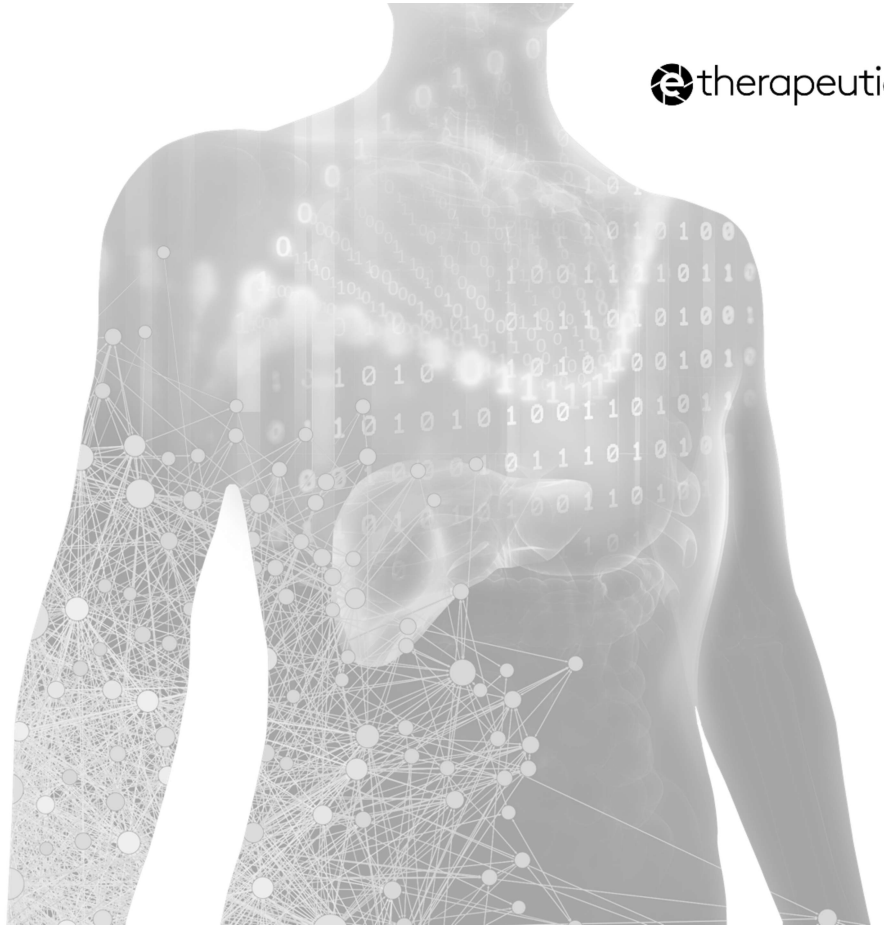
Financial Outlook

- Underlying cash burn in H2 expected to be higher than H1
 - further progress R&D activities
 - build administrative infrastructure to support scaling of business

* £13.0m as of 31 January 2021 5

The Convergence of two Cutting-edge Platforms

 therapeutics



Network & systems biology – core expertise of ETX



Network models are constructed and interrogated using ETX proprietary computational methods to provide insights into complex diseases and transform drug discovery

Biological complexity remains the big challenge in drug discovery and development. We strive to address it

- Biological functions are controlled by **networks of genes and proteins**
- Understanding these networks is key to **understanding disease**
- Millions of network models of **disease processes** built to ask therapeutic questions
- Ability to test **millions of interventions** *in silico*
- Computational outputs feed directly into **translatable** laboratory assays



Influenza virus replication



Lipid metabolism



Tryptophan catabolism



Telomerase signaling



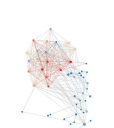
Endocytosis



Fibroblast activation



Angiogenic signaling



Neuronal autophagy



Tunneling nanotube regulation



Insulin resistance

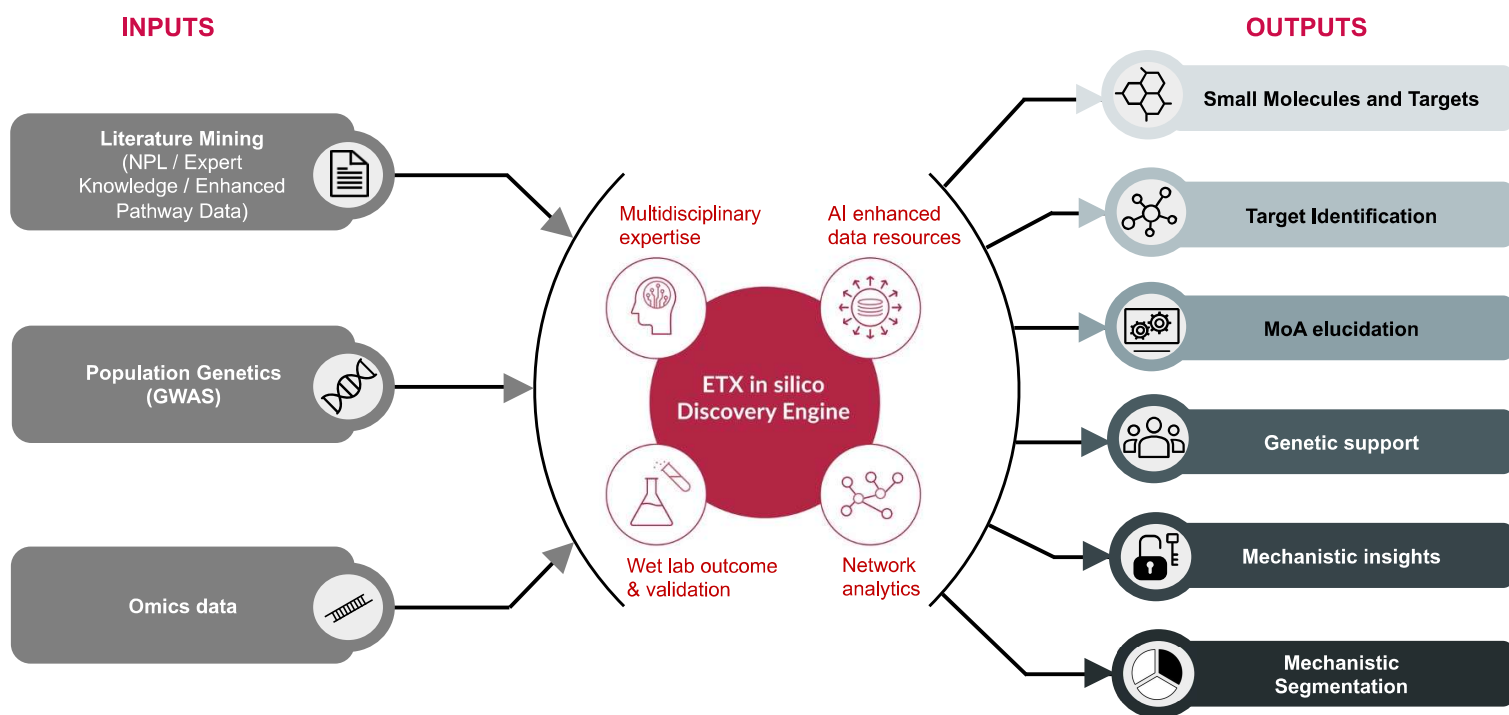


Axonal degeneration



Immune checkpoint signaling

ETX *in silico* Discovery Engine – Inputs & Outputs



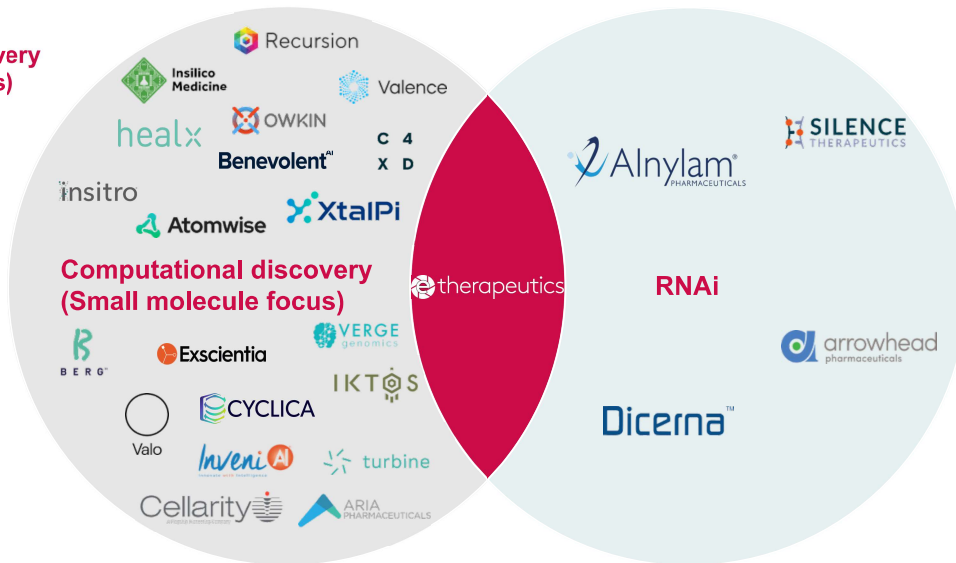
Competitive landscape – differentiated positioning

The industry faces two huge difficulties: understanding biology and making good drugs



Computational discovery (small molecule focus)

- Huge effort around solving small molecule chemistry
- Speed asymmetry
- Poorly understood biology



RNAi

- Significantly faster molecular design
- Lack of novel targets
- Poorly understood biology

Drug design times and costs (estimated)



>\$4M
>4 years

Small molecules



\$0.5M
6 months

siRNA

Information RNAi Molecules

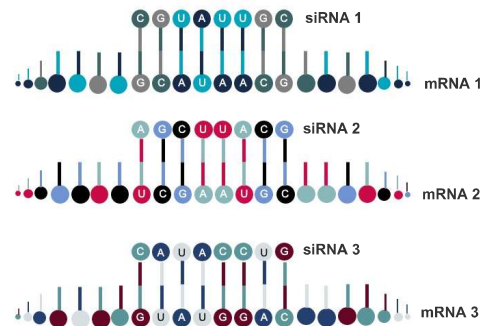


Expansion into RNAi, a highly specific and reproducible modality for gene silencing that enables accelerated timelines and lower R&D costs

New proprietary RNAi platform technology for liver gene silencing:

- Enables ETX to silence selectively **any of the ~10k genes** in the genome of hepatocytes
- **Ability to quickly prosecute** target gene ideas generated computationally (key differentiator)
- **Rapid design of information molecules** that become drug candidates
- GalNAc conjugation enables **hepatocyte specificity and subcutaneous administration**
- **Accelerated** generation of new candidates relative to other modalities

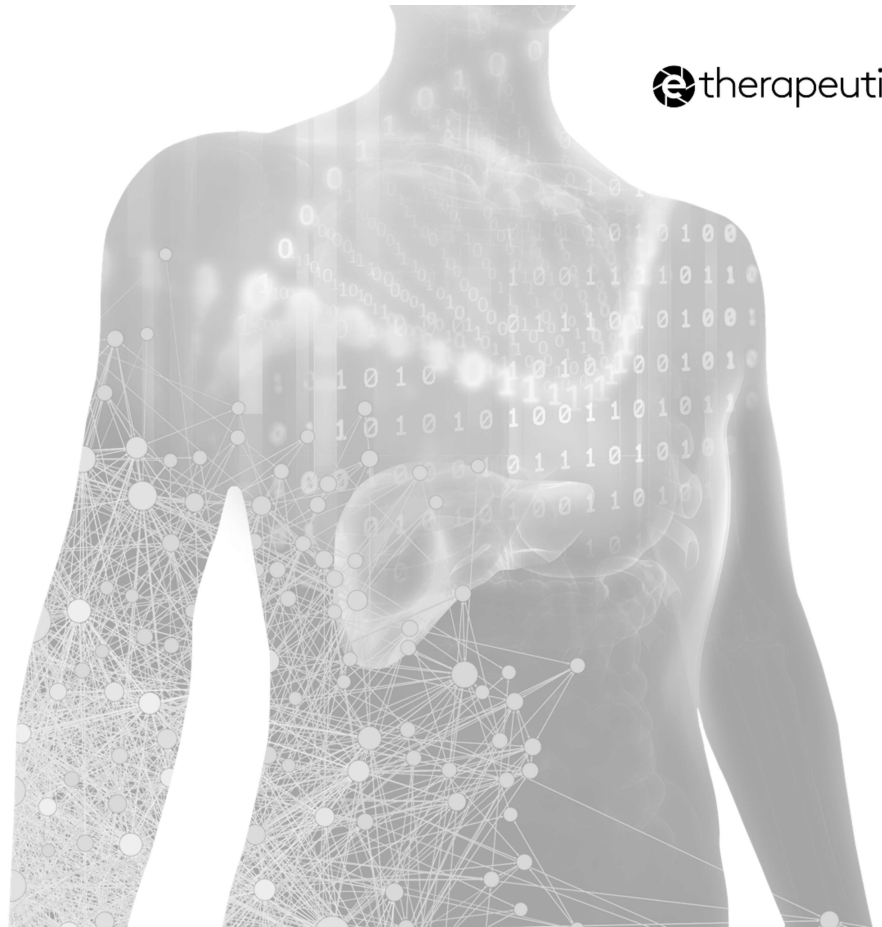
siRNA design based on genetic code



GalNAc conjugation enables specific siRNA delivery to hepatocytes (liver)



Development of a
World-leading
Proprietary RNAi
Platform



Benchmarking Studies – ETX GalNAc-siRNA Platform Characterisation Completed



Experimental plan

- **Construct designs:** 8 oligonucleotide chemistries and different GalNAc linkers tested
- **Target knock-down:** both depth and duration of knock-down evaluated
- **High hurdle:** ETX platform benchmarked against leading peer platforms (including one approved drug and one in registration)
- **Reproducibility:** 3 targets evaluated

Results

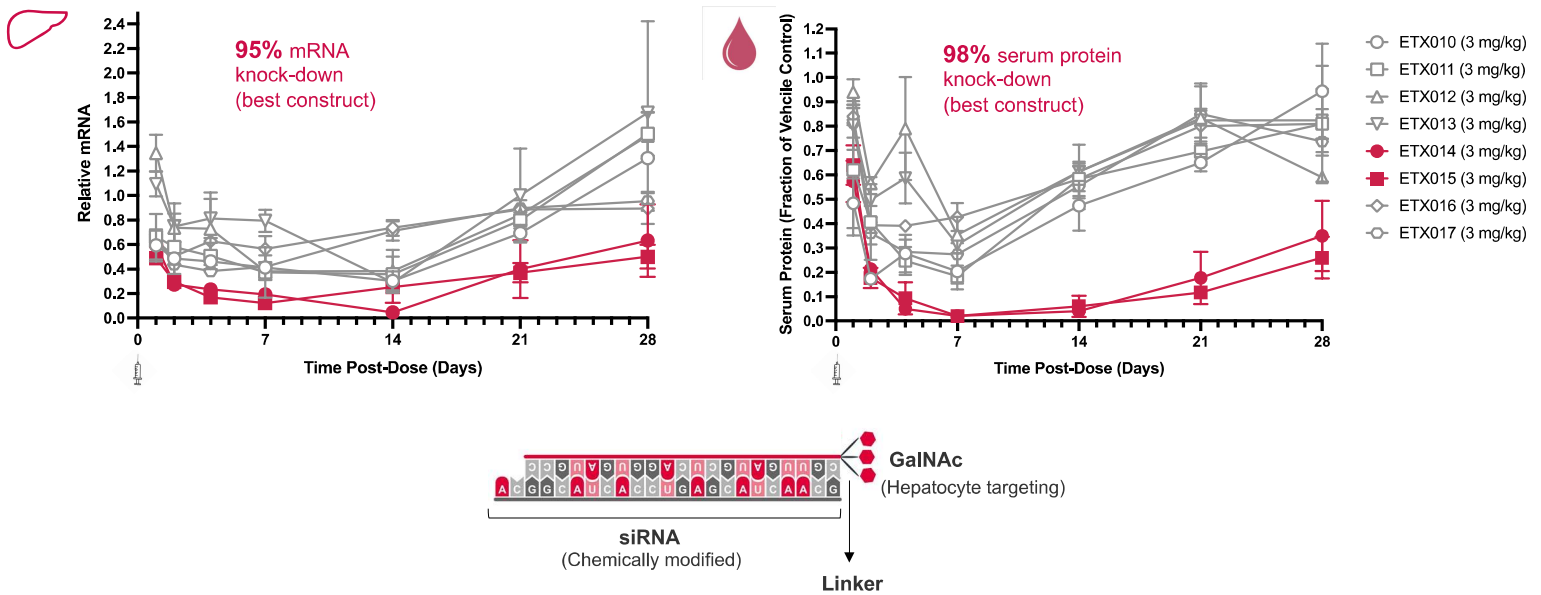
- ✓ **Data package:** *In vitro* and *in vivo* experiments completed. Characterisation datasets generated (*See next slides for headline results*)
- ✓ **Lead designs:** Most potent designs consistently identified
- ✓ **11 patent applications filed**
- ✓ **Competitive depth and duration of target gene knock-down. Equivalent performance to leading platforms**

RNAi platform ready to prosecute targets identified in-house

ETX GalNAc-siRNA Platform Performance: Headline Mouse Results



Different ETX constructs tested in mice for Target X



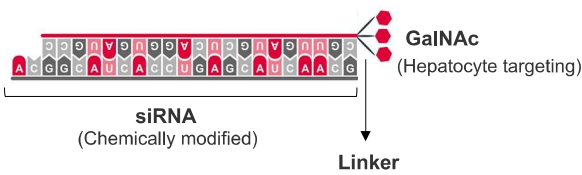
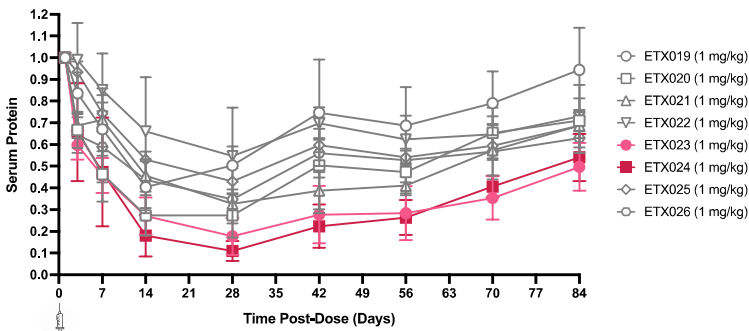
n=3, C57BL/6 mice

ETX GalNAc-siRNA Platform Performance: Headline Non-Human Primate (NHP) Results

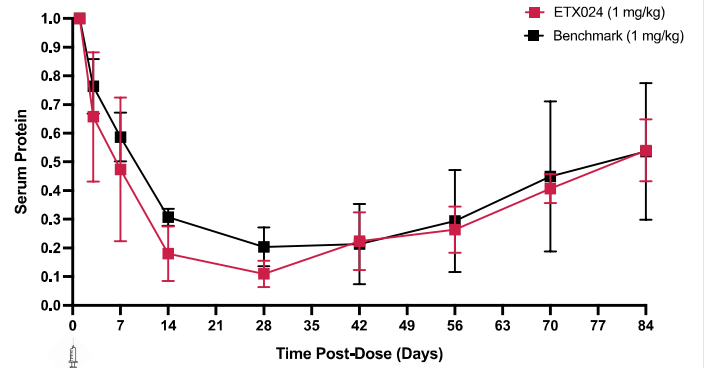


Summary non-human primate target Y knock-down data (serum protein):

Different ETX constructs tested – Target Y



Competitive depth and duration of target knock-down



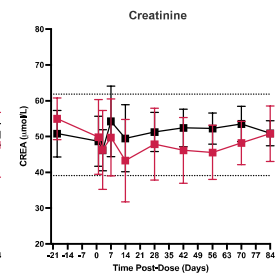
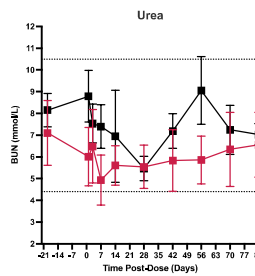
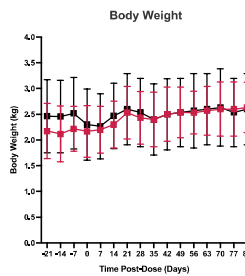
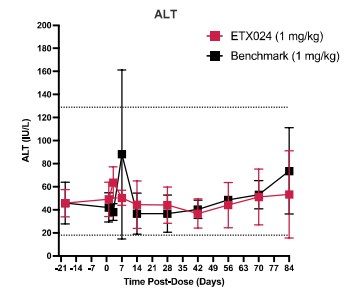
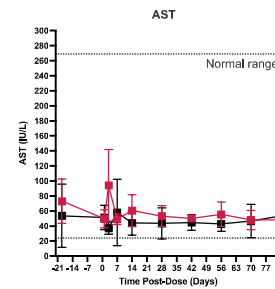
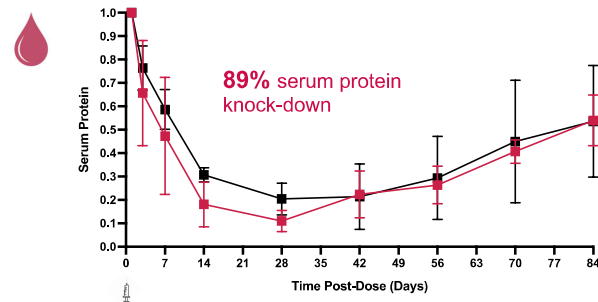
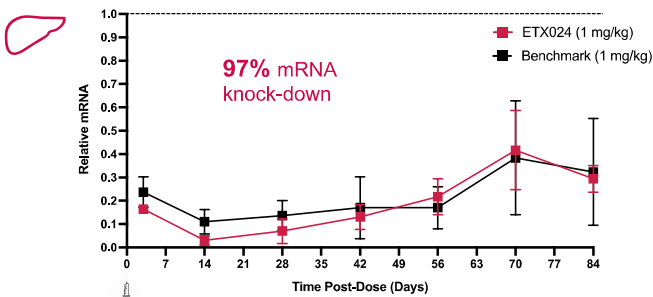
Cynomolgus monkeys, n=3

ETX lead Construct Design Performance and Safety (NHP)



Target Y liver mRNA and serum protein levels show deep and sustainable knock-down for **3 months** in non-human primates

Well tolerated in non-human primates

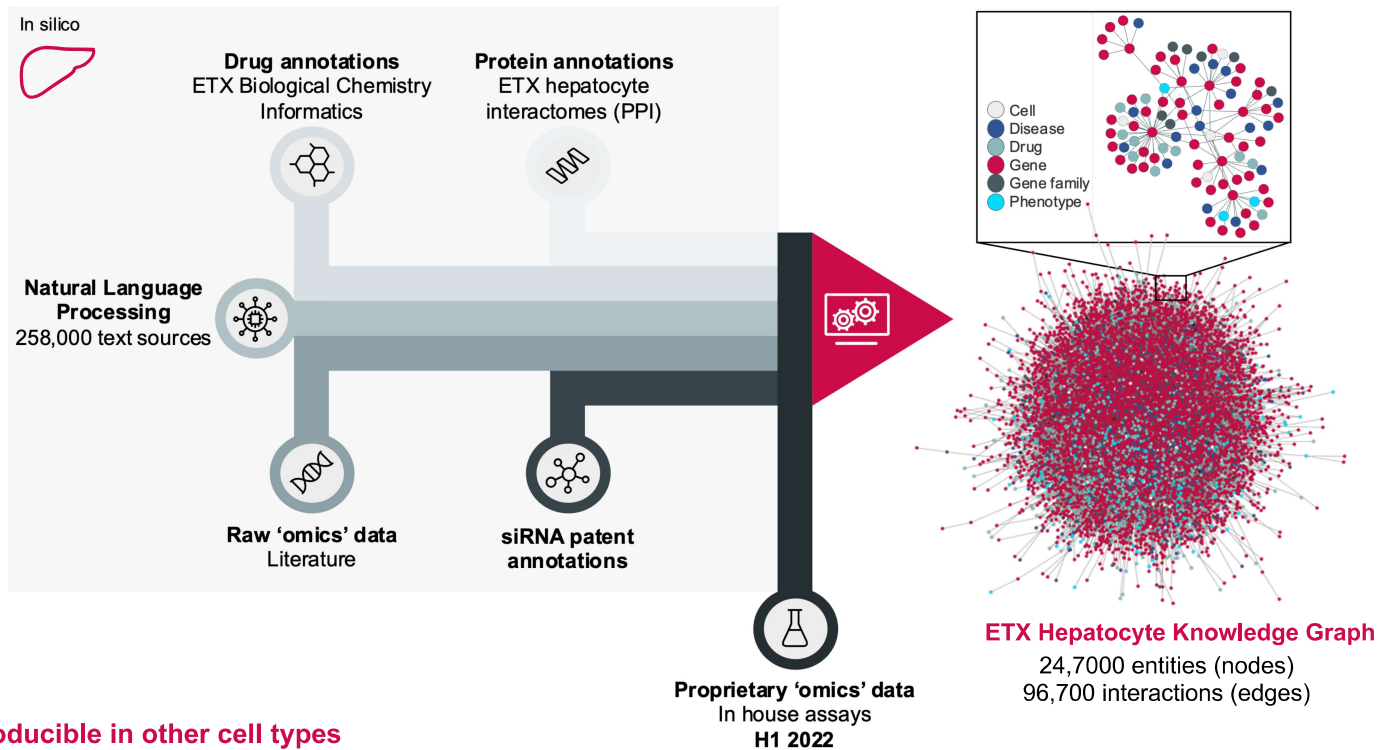


Cynomolgus monkeys, n=3, ALT (alanine aminotransferase), AST (aspartate aminotransferase)

Hepatocyte-specific Computational Platform

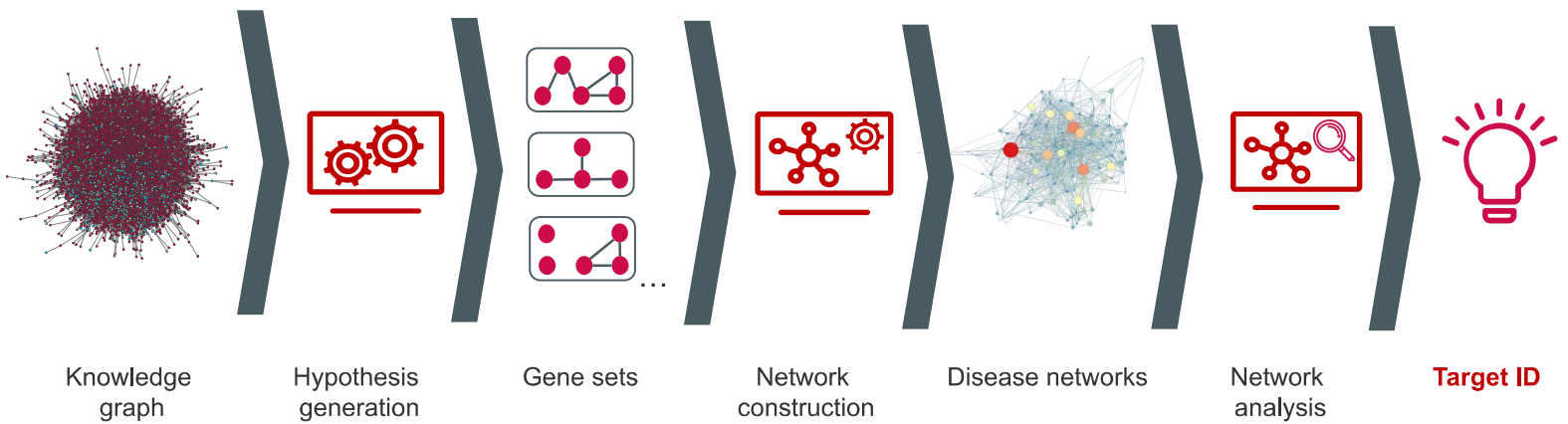


Hepatocyte-specific* Data Strategy and Knowledge Graph



* Reproducible in other cell types

Hepatocyte Target Identification



Target identification is the biggest limitation in the field.

We leverage our computational platform to identify targets. We are uniquely positioned to drive novelty, based on a better understanding of disease biology

Value Inflection Points & Business Model



Optionality and near-term opportunities for value realisation

In-house pipeline offers scope for early partnerships



ETX RNAi Platform



ETX Computational Platform & Hepatocyte-specific data

Relevant deal examples

 2019 30 targets \$175M + \$357.5M milestones per target	 2021 ALS \$25M + \$694M Potential royalties	 2016 1 target (LPa) \$35M upfront \$21.5M equity \$617M milestones	 2019 1 asset (HBV) \$200M upfront \$1.47B milestones
 2019 \$400M + \$200M milestones	 2019 CKD and IPF Undisclosed financials		

Summary and Next Steps



RNAi:

- Proprietary GalNAc-siRNA platform technology developed and extensively characterised
 - Equivalent level of target gene knock-down and duration of action demonstrated against leading platforms
 - 11 patent applications filed to protect inventions
- **Ability to inhibit any gene in hepatocytes (liver) and rapidly generate drug candidates to prosecute target ideas**

Computational Platform:

- **Galapagos collaboration:** Successfully identified hits (replicated 100-1000x higher hit rate) and received 3 milestone payments in the period. Scope for further upside throughout development and commercial
- Most complete hepatocyte-specific **knowledge graph** created
- Expansion of **target ID** capabilities, including mode of action elucidation and target deconvolution capabilities
- Adaption and application of computational approaches to RNAi discovery
- Continued streamlining via **increased automation and cloud computing**
- Further partnering conversations ongoing

Next Steps:

- Generate **proprietary omics** (experimental) hepatocyte data to feed into knowledge graph
- Continued development of **computational platform** for internal use and further collaborations
- Populate in-house **RNAi pipeline** and initiate partnering discussions
- **R&D Day in 2022**

Experienced Leadership



Karl Keegan
Chief Financial Officer



Ali Mortazavi
Chief
Executive Officer



Alan Whitmore
Chief Scientific Officer



Stephanie Maley
Chief People
Officer



Jonny Wray
Chief Technology
Officer



Alison Gallafent
Head of IP



Laura Roca-Alonso
Chief Business
Officer

Board of Directors

Ali Mortazavi
Chief Executive Officer

Professor Trevor Jones CBE
Non-Executive Chairman

Michael Bretherton
Non-executive Director
CEO Sarossa Plc

Scientific Advisory Board

Dr Paul Burke
Chair, Former CTO Pfizer

Dr Bill Harte
Chief Translational Officer
Case Western Reserve University

Professor John Mattick
Professor RNA Biology, UNSW Sydney
Former CEO Genomics England

