

Figure 1: Artemis priority targets (yellow stars) over gravity Image and interpreted solid rock geology, magnetics and structural geology.

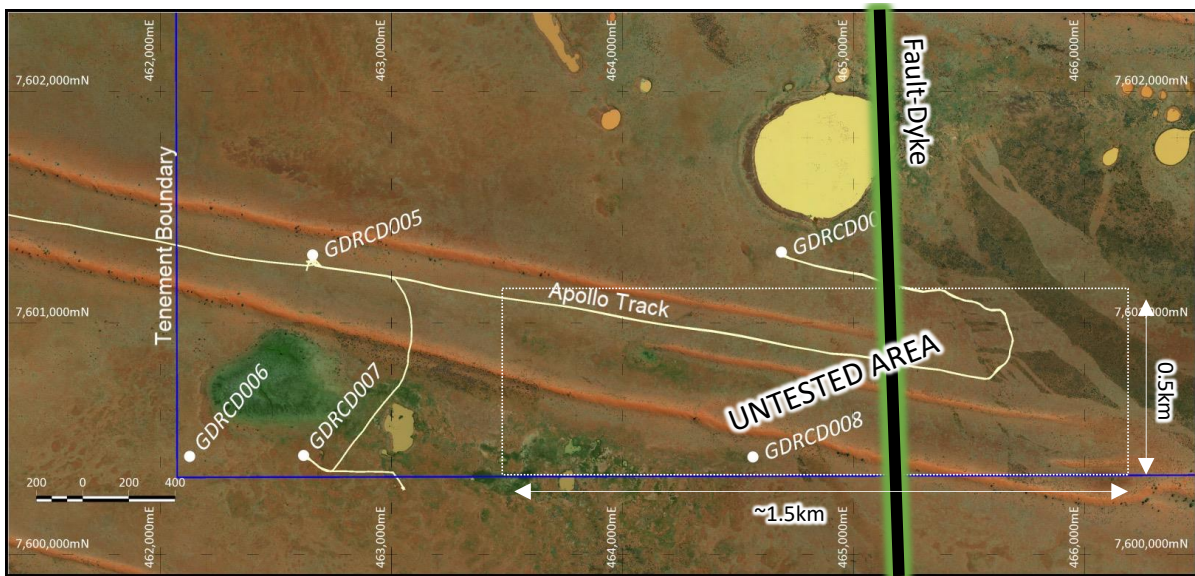


Figure 2: Drill hole locations with interpreted major regional fault with later infill dyke. Untested Apollo/Atlas area in yellow (~1,5km X ~0.5km). Note GDRCD008 hole lost still in cover sequence at ~241m still well short of target.

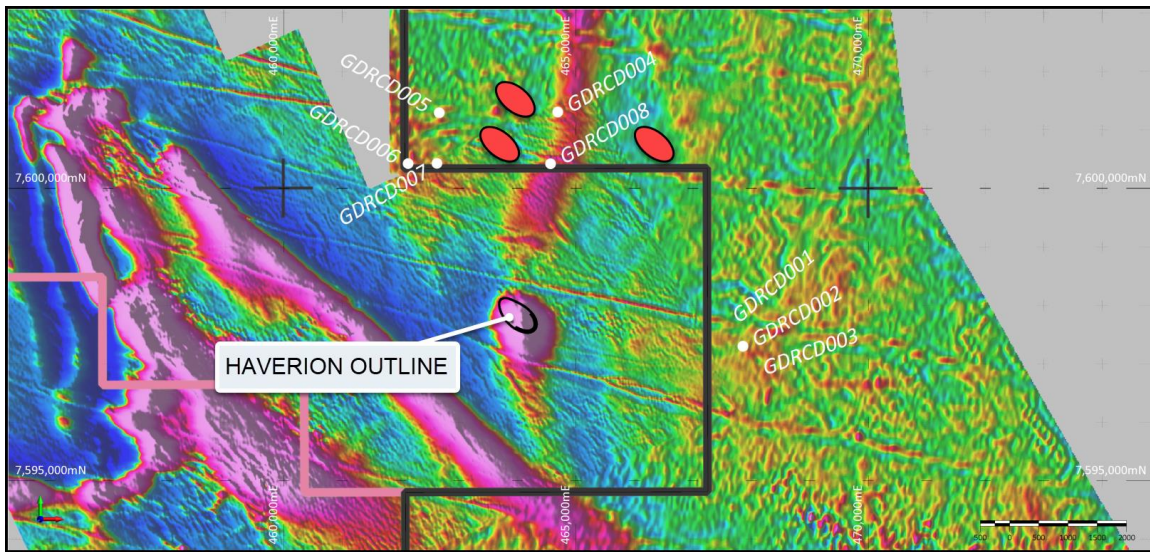


Figure 3: Illustration showing the size of Haverion mineralisation that can occur between the drilling completed in 2021. Red ovals represent Haverion to scale and show the importance of closer spaced drilling to test additional targets, particularly against the north-south trending structure. Hole GDRCD008 failed in cover sequence and will be re-drilled in this programme.