

Figure 1: Regional Setting of the Cascabel Project, in the under-explored Ecuadorian portion of the Andean Copper Belt.



Figure 2: Location of Cascabel project in northern Ecuador, highlighting the significant capital advantages held by the project, with proximity to ports, road infrastructure, hydro-electric power stations and the trans-continental power grid.

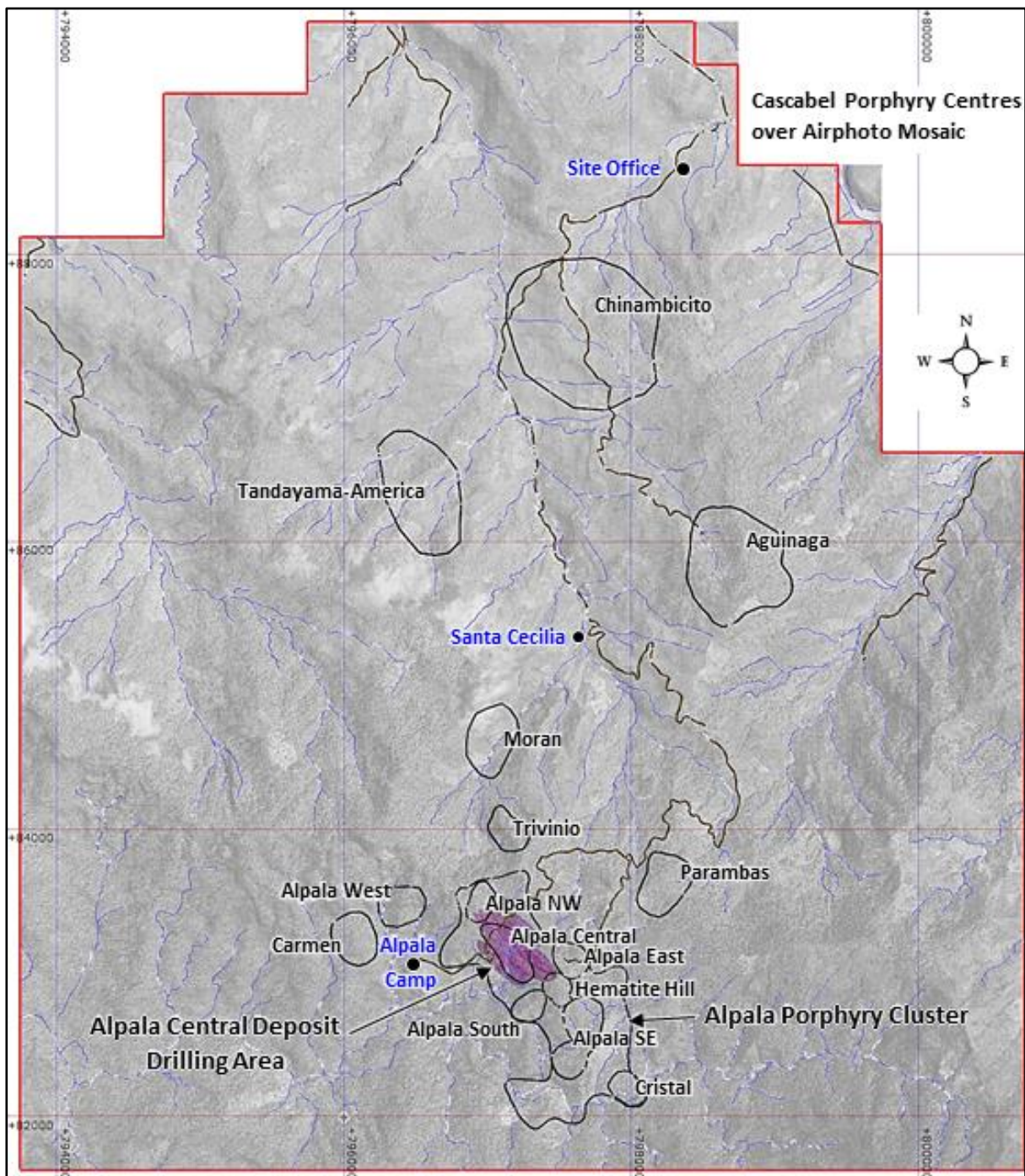


Figure 3: Cascabel tenement area showing 15 porphyry targets recognised to date through compilation of multiple geophysical, geochemical and geological datasets. High priority target areas identified at Hematite Hill, Alpa Southeast, Alpa East, Alpa West, Trivinio, Moran, Aguinaga, and Tandayama-America are marked for drill testing during 2017.

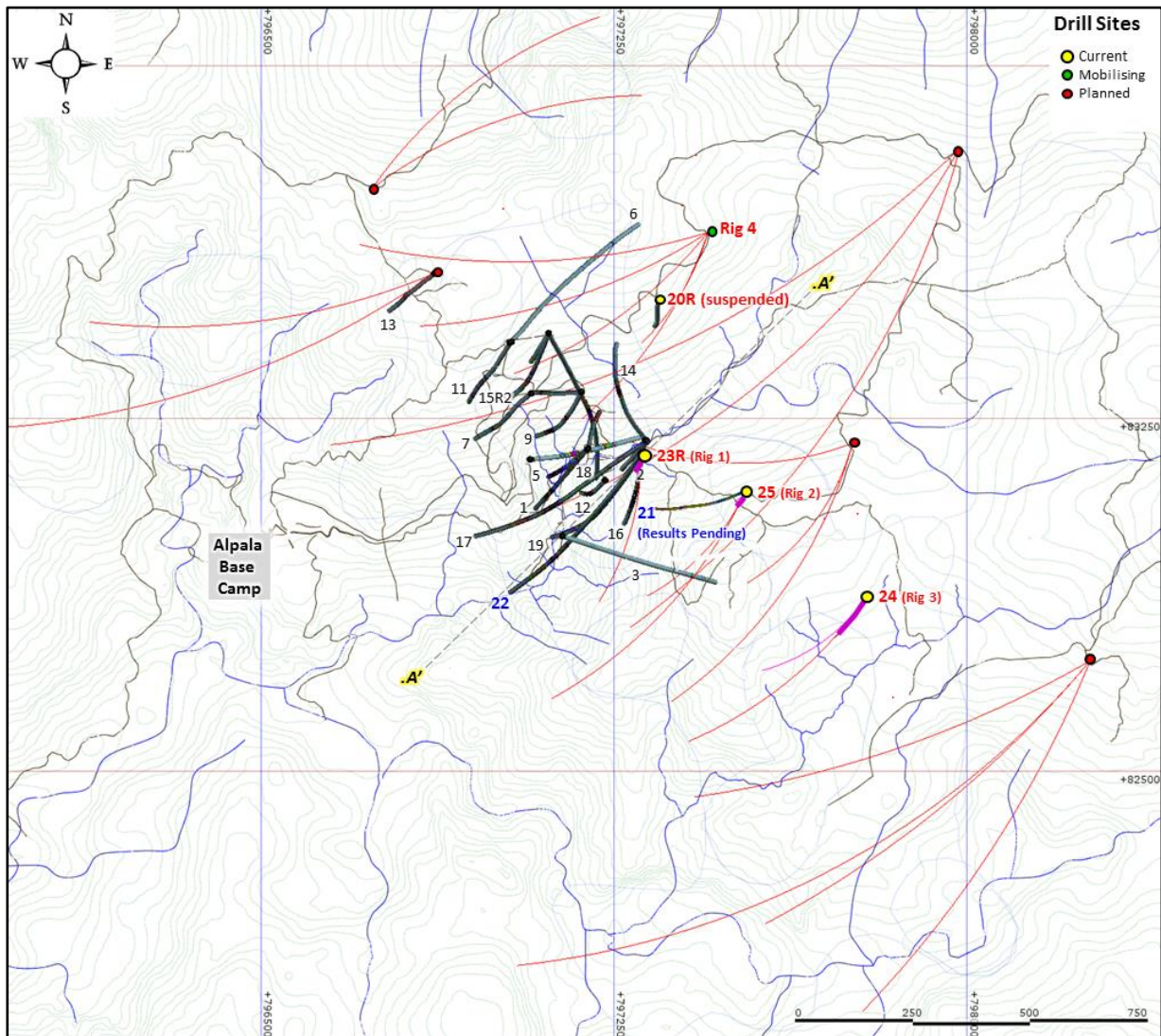


Figure 4: Drill hole location plan, showing existing drill holes, current holes 23R, 24, and 25 with current progress indicated with magenta drill trace. Proposed drill hole locations, aimed at defining the geometry and extent of the greater Alpala porphyry copper-gold system, are shown in red. NE trending sections line A-A' is indicated as dashed lines in yellow glow.

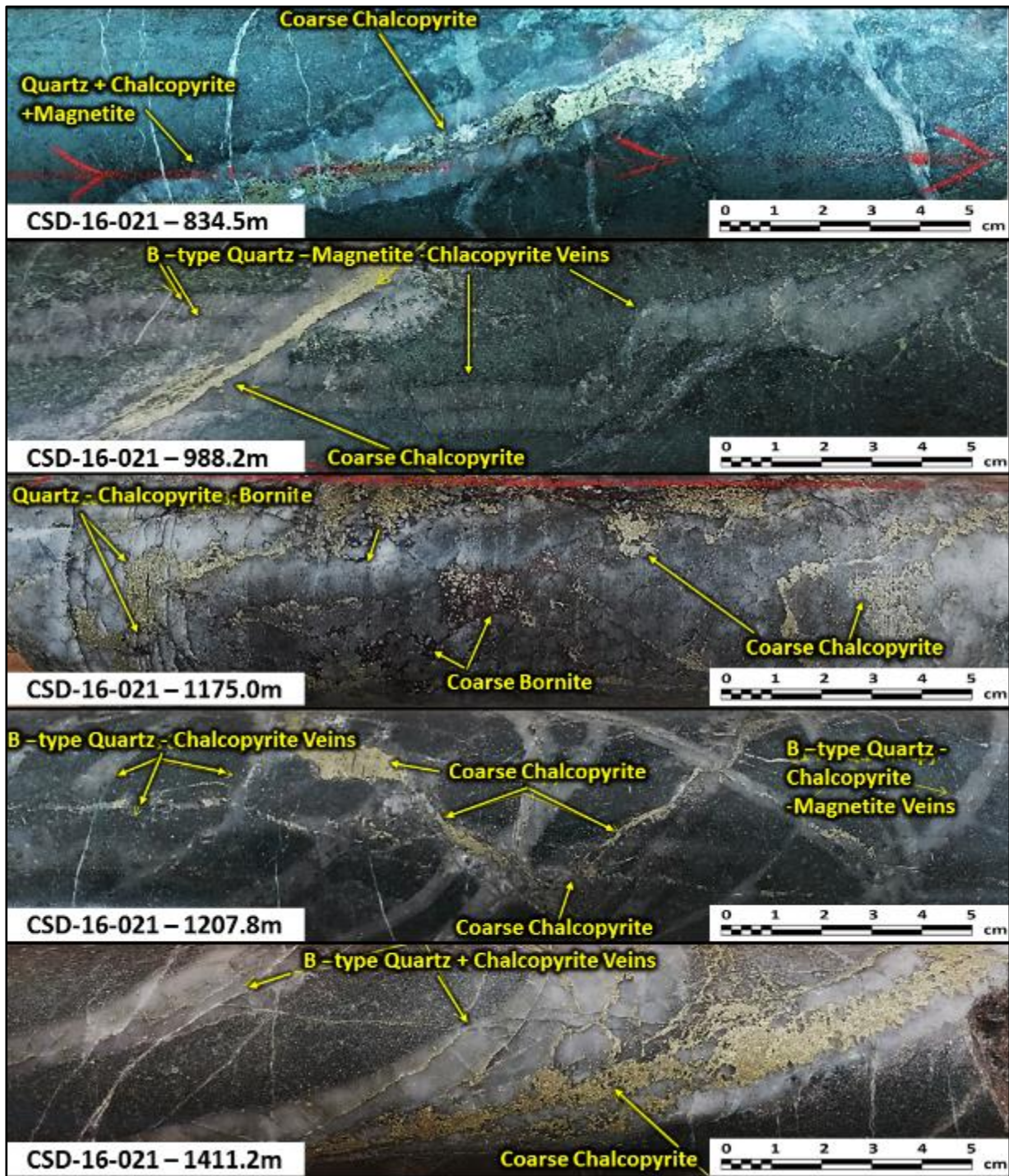


Figure 5: Selected examples of mineralisation encountered in Hole 21. Assay Results from Hole 21 are expected in the coming week.

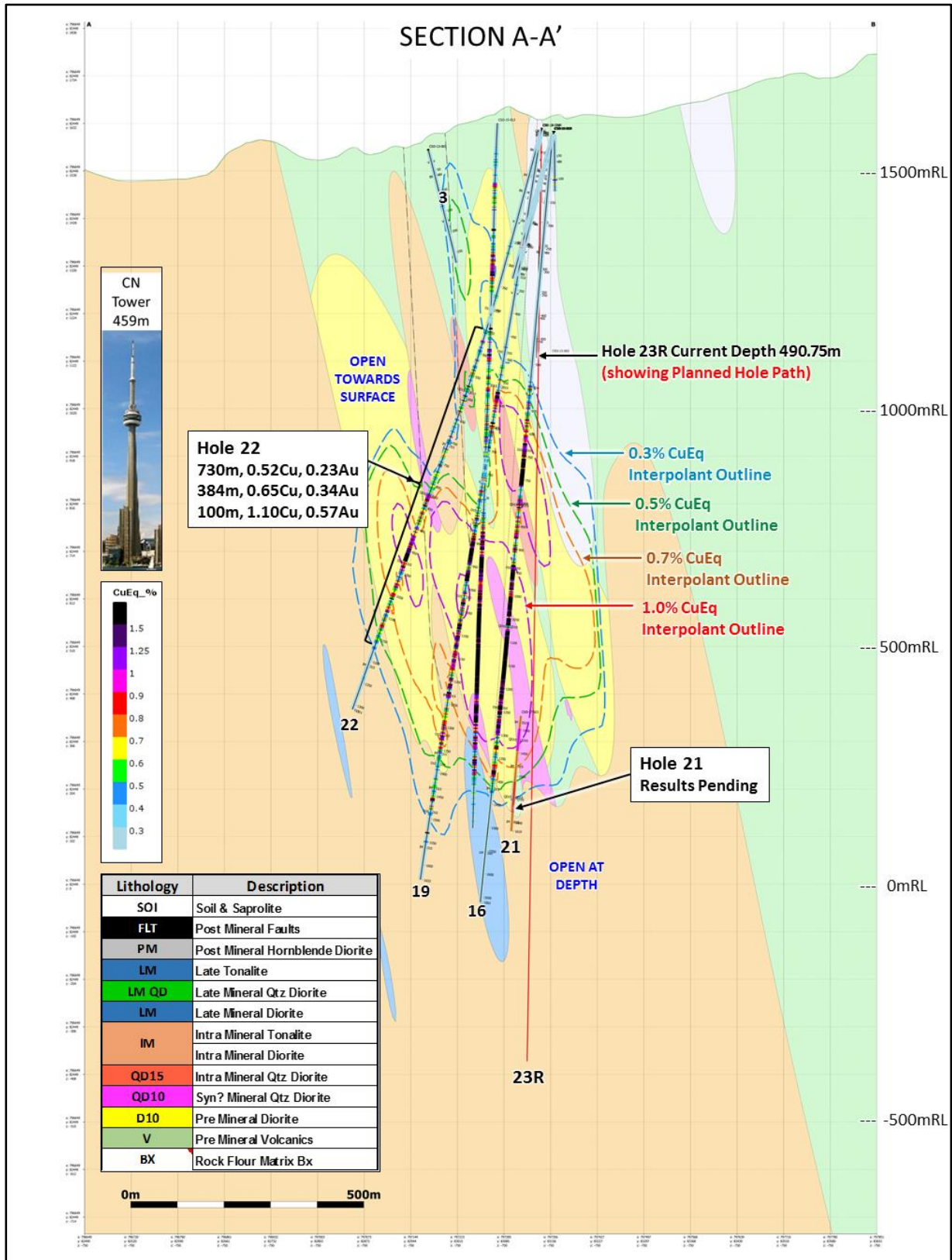


Figure 6: Cross-section A-A' looking northwest, with window $\pm 60\text{m}$, showing Hole 22 assay results, geology model, copper equivalent grades, and positions of Holes 3, 16, 19, 21, 22 and 23R at Alpala.

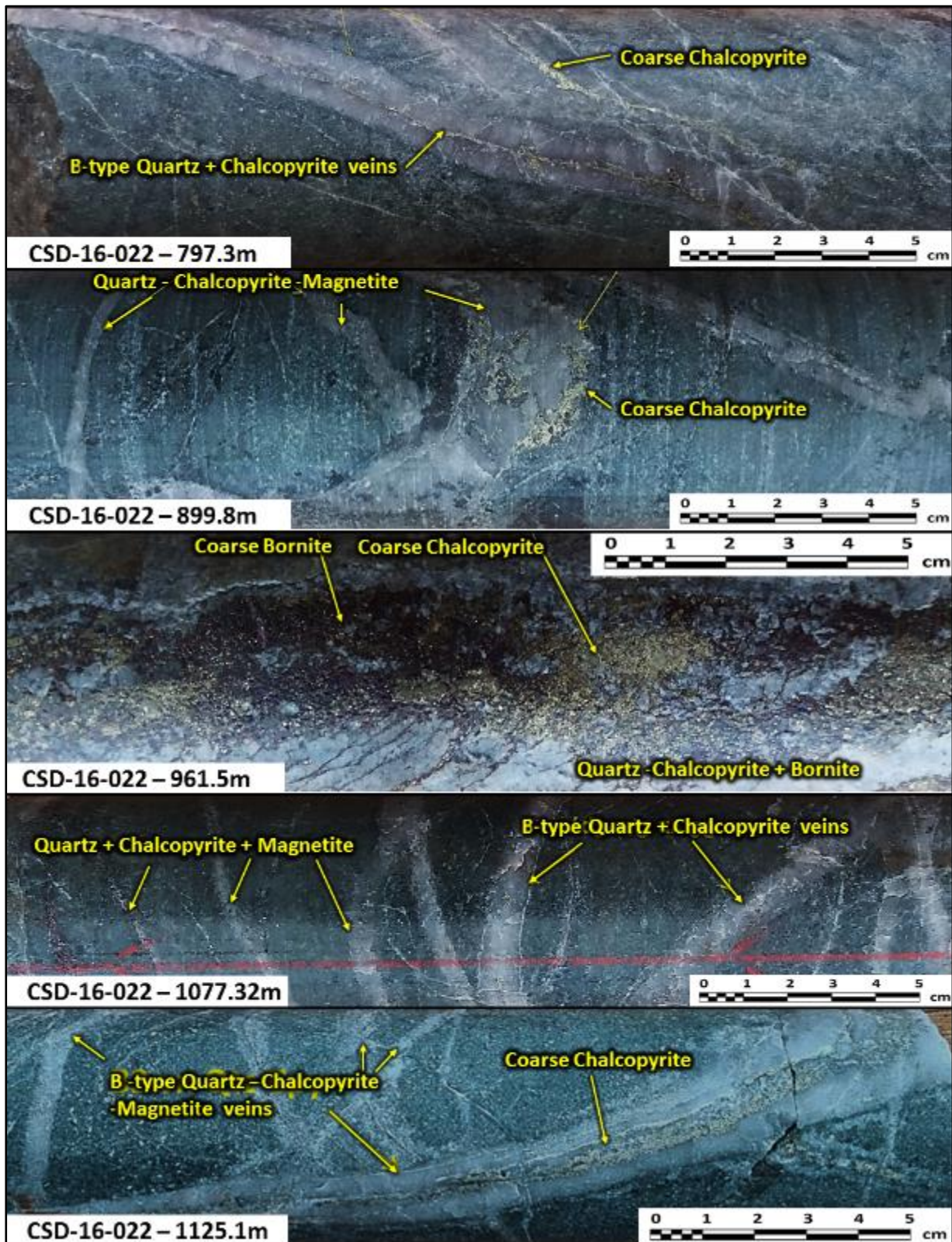


Figure 7: Selected examples of mineralisation encountered in Hole 22.