

# NANOQ 2022 RESULTS



**Amaroq Minerals**

[www.amaroqminerals.com](http://www.amaroqminerals.com) | AIM, TSXV, Nasdaq: AMRQ



# DISCLAIMER AND TECHNICAL INFORMATION

The information contained herein has been provided solely for information purposes and does not purport to be comprehensive or contain all the information that may be required by recipients to evaluate Amaroq Minerals Ltd (the "Company"). The presentation and the information contained in it has not been independently verified and no reliance should be placed on it or the opinions contained within it. In furnishing the presentation, the Company reserves the right to amend or replace the presentation at any time and undertakes no obligation to provide the recipient with access to any additional information. The Company may, but shall not be obliged to, update or correct the information set forth in the presentation or to provide, update or correct any additional information.

No undertaking, representation, warranty or other assurance, express or implied, is made or given by or on behalf of the Company, or any of its directors, officers, partners, employees, agents or advisers, or any other person, as to the accuracy or completeness of the presentation or the information contained herein. Accordingly, except in the case of fraud, no responsibility or liability (direct, indirect, consequential or otherwise) is accepted by any of them for the information or opinions contained in, or for any errors, omissions or misstatements (negligent or otherwise) in, the presentation.

This presentation does not constitute a prospectus or offering memorandum or offer in respect of any securities and should not be considered as a recommendation by the Company, its affiliates, representatives, officers, employees or agents to acquire an interest in the Company. The presentation does not constitute or form part of any offer or invitation to sell or issue or any solicitation of any offer to purchase or subscribe for any securities in any jurisdiction, nor shall it (or any part of it) or the fact of its distribution, form the basis of or be relied upon in connection with, or act as any inducement to enter into, any contract or commitment or engage in any investment activity whatsoever relating to any securities. The issue of the presentation shall not be taken as any form of commitment on the part of the Company to proceed with any transaction.

The contents of this presentation have not been approved by any person for the purposes of section 21 of the Financial Services and Markets Act 2000, as amended ("FSMA"). Reliance on the presentation for the purpose of engaging in any investment activity may expose an individual to a significant risk of losing all of the property or other assets invested. Any person who is in any doubt about the subject matter to which the presentation relates should consult a person duly authorised for the purposes of FSMA who specialises in the acquisition of shares and other securities.

The presentation includes certain "forward-looking statements". All statements other than statements of historical fact included in the presentation, including without limitation statements regarding the future plans and objectives of the Company, are forward-looking statements that involve various risks and uncertainties. These forward-looking statements include, but are not limited to, statements with respect to pursuing successful production and exploration programs, and other information that is based on forecasts of future operational or financial results, estimates of amounts not yet determinable and assumptions of management. Any statements that express or involve discussions with respect to predictions, expectations, beliefs, plans, projections, objectives, assumptions or future events or performance (often, but not always, using words or phrases such as "expects" or "does not expect", "is expected", "anticipates" or "does not anticipate", "plans", "estimates" or "intends" or stating that certain actions, events or results "may", "could", "would", "might" or "will" be taken, occur or be achieved) are not statements of historical fact and may be "forward-looking statements". Forward-looking statements are subject to a variety of risks and uncertainties that could cause actual events or results to differ from those reflected in the forward-looking statements. There can be no assurance that forward-looking statements will prove to be accurate and actual results and future events could differ materially from those anticipated in such statements. Important factors that could cause actual results to differ materially from the Company's expectations include, among others, risks related to the ability to raise additional capital proposed expenditure for exploration work and general and administrative expenses, international operations, the actual results of current exploration activities, conclusions of economic evaluations and changes in project parameters as plans continue to be refined as well as future prices of gold and other precious and non-precious metals. Although the Company has attempted to identify important factors that could cause actual results to differ materially, there may be other factors that cause results not to be as anticipated, estimated or intended. There can be no assurance that such statements will prove to be accurate as actual results and future events could differ materially from those anticipated in such statements. Accordingly, readers should not place undue reliance on forward-looking statements.

Recipients of the presentation outside the United Kingdom should inform themselves about and observe any applicable legal restrictions in their jurisdiction which may be relevant to the distribution, possession or use of the presentation and recognise that the Company does not accept any responsibility for contravention of any legal restrictions in such jurisdiction. The Company's securities have not been and will not be registered under the United States Securities Act of 1933, as amended ("Securities Act"), or under the securities legislation of any state of the United States nor under the relevant securities laws of Australia, Canada, Japan or the Republic of South Africa and may not be offered or sold in the United States except pursuant to an exemption from, or in a transaction not subject to, the registration requirements of the Securities Act and in compliance with any applicable state securities laws.

## Technical Information

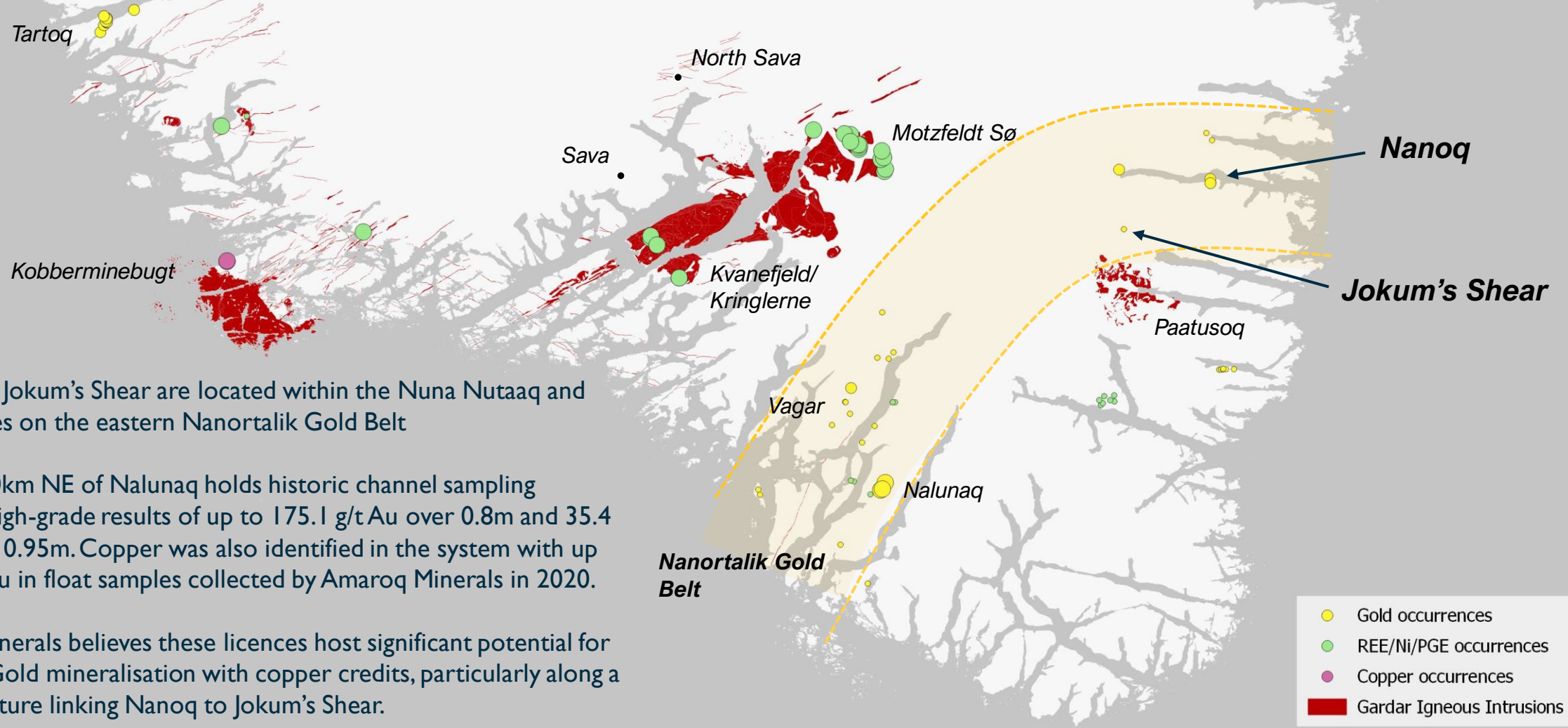
The reporting standard adopted for the reporting of the Mineral Resources is that defined by the terms and definitions given in the terminology, definitions and guidelines given in the Canadian Institute of Mining, Metallurgy and Petroleum (CIM) Standards on Mineral Resources and Mineral Reserves (December 2014) as required by NI 43-101. The CIM Code is an internationally recognised reporting code as defined by the Combined Reserves International Reporting Standards Committee.

All scientific or technical information in this presentation has been approved on the Company's behalf by James Gilbertson, VP of Exploration, a Qualified Person under National Instrument 43-101 – Standards of Disclosure for Mineral Projects. For further information about the technical information and drilling results described herein, please see the National Instrument 43-101 – Standards of Disclosure for Mineral Projects compliant technical report prepared by SRK Exploration Services Ltd. dated effective December 16, 2016, titled "An Independent Technical Report on the Nalunaq Gold Project, South Greenland" and the technical report prepared by SRK dated effective January 30, 2017, titled "An Independent report on the Tartoq Project, South Greenland" (the "Technical Reports").

In line with the requirements of the AIM Rules for Companies, including the requirement to have a Competent Person's Report ("CPR") prepared within six months of any admission document, the Competent Person's Report titled "A Competent Person's Report on the Assets of Amaroq Minerals Ltd, South Greenland" dated June 26, 2020, is filed on SEDAR under the Company's issuer profile at [www.sedar.com](http://www.sedar.com) and is available on the Company's website at [www.amaroqminerals.com](http://www.amaroqminerals.com). All scientific and technical disclosure in that CPR is in compliance with NI 43-101 standards. The Company notes that this document does not replace the Company's existing 43-101 Technical Reports available on [www.sedar.com](http://www.sedar.com)

# NANOQ & JOKUM'S SHEAR TARGETS

Highly prospective ground on the eastern Nanortalik Gold Belt



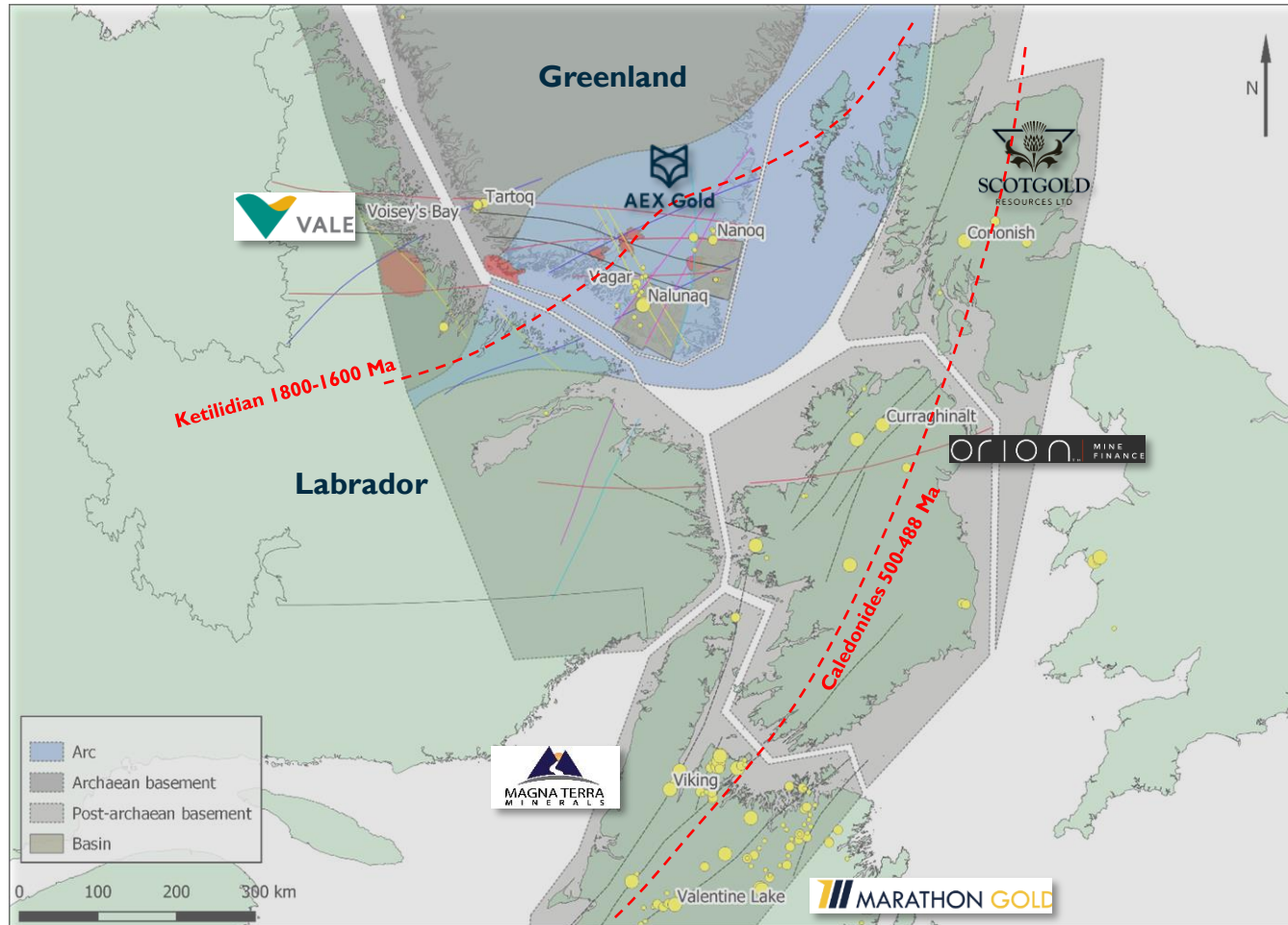
- Nanoq and Jokum's Shear are located within the Nuna Nutaaq and Siku licences on the eastern Nanortalik Gold Belt
- Nanoq, 120km NE of Nalunaq holds historic channel sampling returning high-grade results of up to 175.1 g/t Au over 0.8m and 35.4 g/t Au over 0.95m. Copper was also identified in the system with up to 3.83% Cu in float samples collected by Amaroq Minerals in 2020.
- Amaroq Minerals believes these licences host significant potential for Orogenic Gold mineralisation with copper credits, particularly along a 25km structure linking Nanoq to Jokum's Shear.

0 50 100 150 km



# SOUTH GREENLAND – A MINERAL SYSTEM

*Nanoq Licence located on the boundary of an interpreted basin within a magmatic arc setting between Greenland and Labrador*



**Initial reconstruction of Canada, Greenland and the modelling of an arc and subduction structure that hosts the key mineral occurrences**

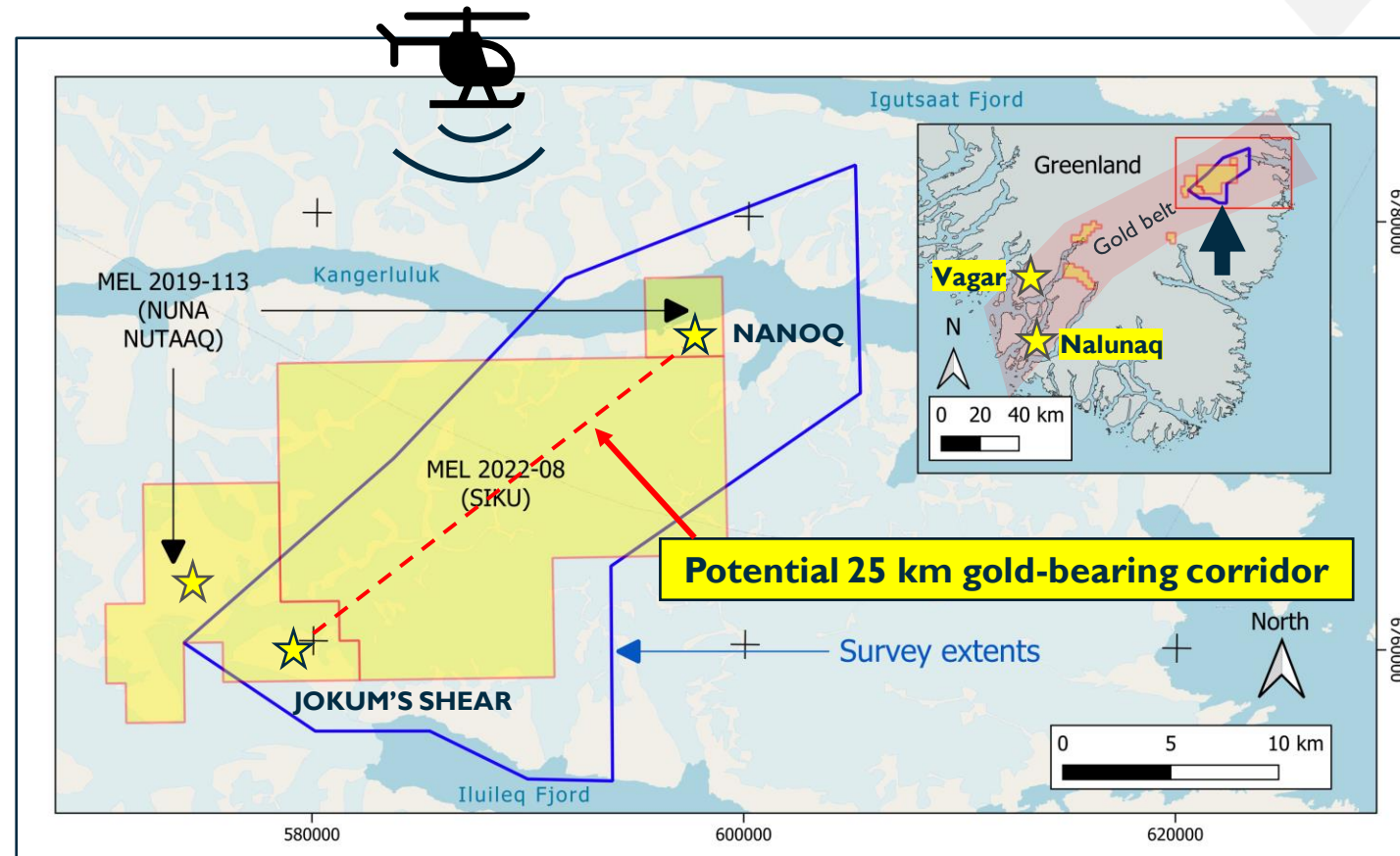
- AEX's geologist's ongoing Mineral System modelling has shown the controlling lithospheric architecture of the region. This is important when understanding where mineralizing fluids have focused and deposited gold
- This research has also provided significant evidence for the connection of Greenland's key large-scale faults (Translithospheric Faults), geology and mineral belts to Newfoundland and Labrador
- This defines a significant arc system from Canada, through Greenland and potentially to the British Isles. Within this arc, AEX have defined two basins that may have been important during the deposition of gold mineralisation in the region
- Nanoq is located on the boundary the northern fault to one of these basins and is a key intersection point for a number of Translithospheric Faults
- AEX's geological model aims to provide the Company with a clear understanding of the controls and location of gold mineralisation during various geological events as well as a series of critical search criteria to guide further exploration



# 2022 EXPLORATION RESULTS

## Highlights

- A high-resolution heli-borne geophysical was conducted out over Amaroq Minerals assets in the eastern extension of the Nanortalik Gold Belt. This survey covered the Nanoq and Jokum's Shear gold targets within the Nuna Nutaaq licence, along with the entirety of the newly acquired Siku licence covering the hypothesized structural corridor between the two.
- The study included Magnetics, Radiometrics, Gravity and a Digital Terrain Model (DTM) – these data will allow direct targeting of high-grade ore shoots, as well as development of new targets in previously unexplored areas.
- Geophysical survey follows on from work completed in 2021 during which a previously unrecognised mineralised structure was observed at Nanoq (SZ3, samples up to 16.95 g/t Au), adding a significant new zone to the two known structures SZ1 and SZ2 associated with high-grade historical samples including 175 g/t Au over 0.8m and 35.4 g/t Au over 0.95m, grab samples up to 118 g/t Au.
- New datasets reveals new detail to the known occurrences, as well as highlighting new structurally favourable sites close to Nanoq and across the Siku licence linking this to Jokum's Shear and suggesting a far larger mineralising system.



# NANOQ

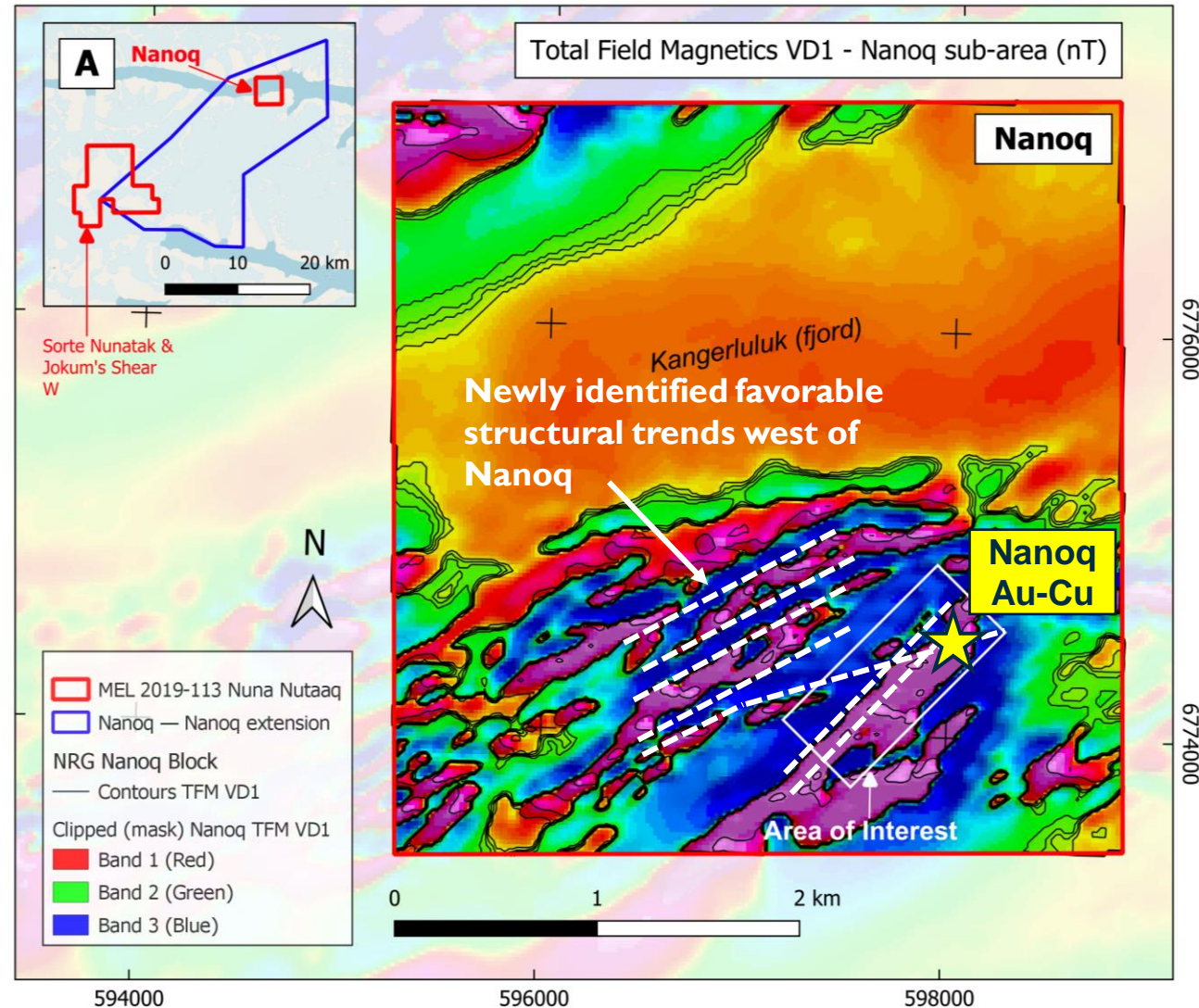
## Potential for repetition and continuity of gold-bearing structures

- Data including heli-borne magnetics has enhanced the understanding of the gold mineralised shear zone at Nanoq gold-copper target.
- Assays of 16.95 g/t Au (within c. E-W trending SZ3 mineralised structure) and 5.65 g/t Au (SW-NE trending SZ1) were encountered during the previous season.
- Geophysical datasets at Nanoq support detailed field-work conducted in 2021 including sampling and a detailed structural assessment (SRK).
- Integration of data will provide a robust framework for exploration targeting.



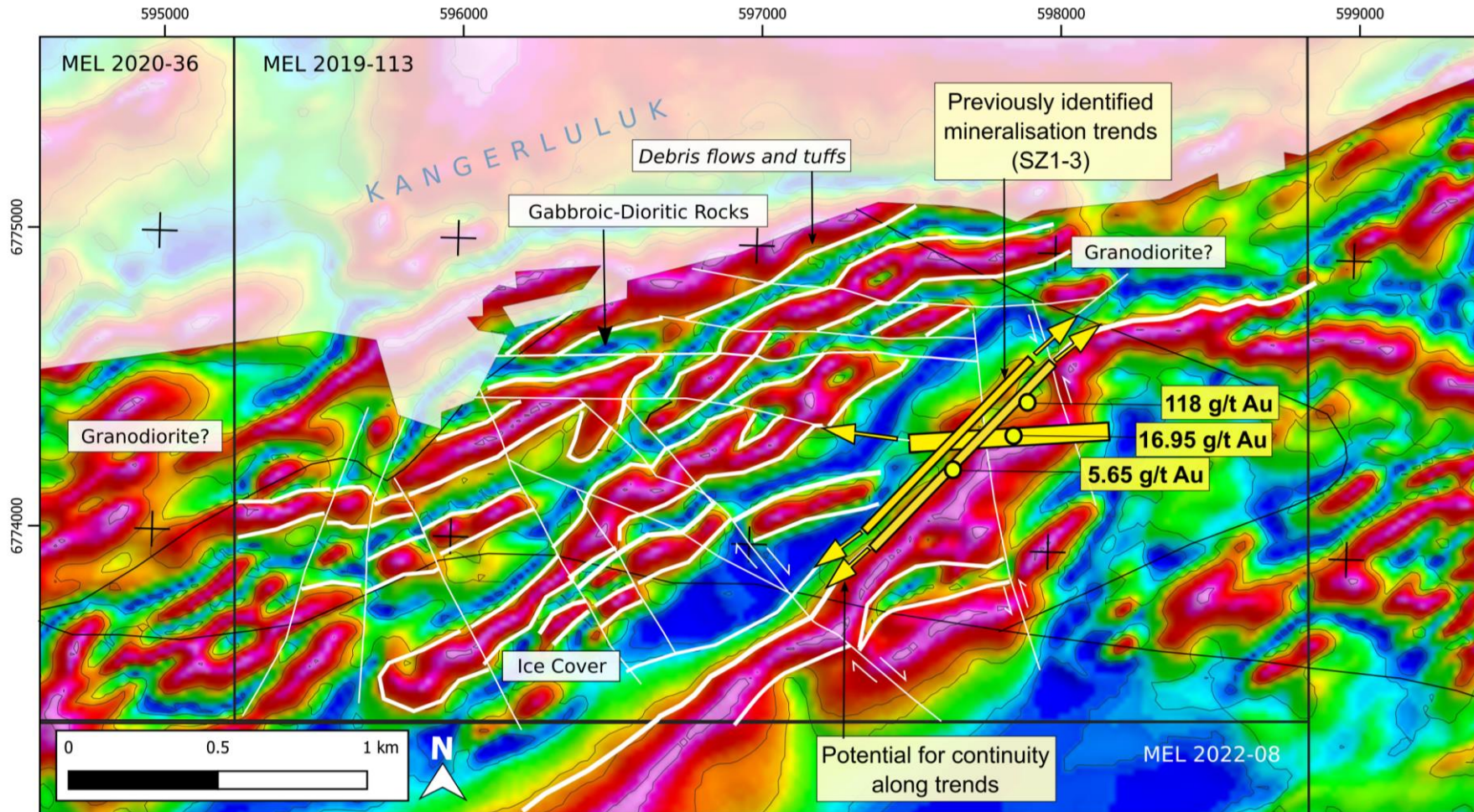
Initial interpretation of total Field magnetics (VD1) over Nanoq ▶

◀ Images from previous year's fieldwork at Nanoq revealing gold-bearing quartz veining, including low-angle extensional veins and veining within fold hinges.



# NANOQ

*New geophysical data support a structurally-controlled gold system and indicate target zones*



**Total Field Magnetics: potential for along-trend continuity, and zones of structural complexity (potential traps) to the west of known gold mineralisation**

**Newly acquired Geophysical data support exploration hypotheses and add detail to interpretation enabling focused targeting.**

Data support mineralised structures forming components of a sinistral shear zone, the confluence of E-W and SW-NE trending structures forming a highly favourable physical trap for orogenic gold deposits.

Current hypotheses at Nanoq favour structures which have produced near-vertically plunging gold-bearing lodes. Quartz veins were observed in field studies within a structurally favourable volcano-sedimentary sequence.

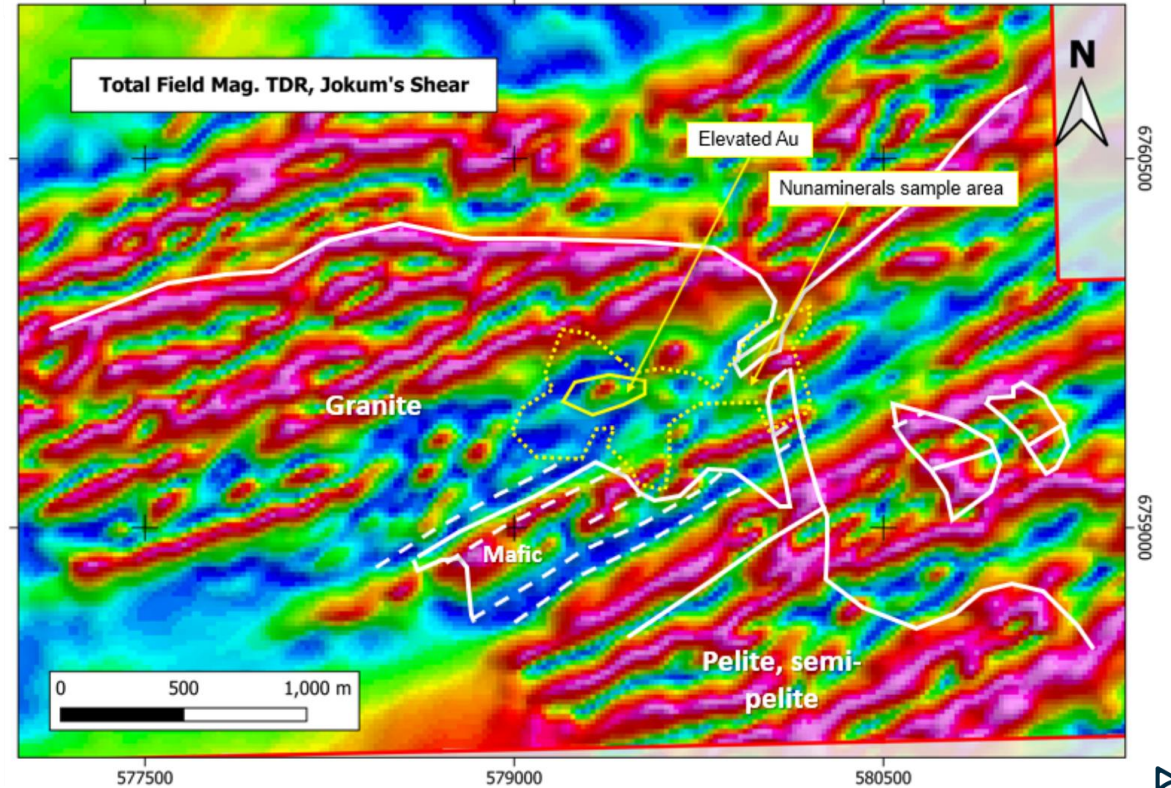
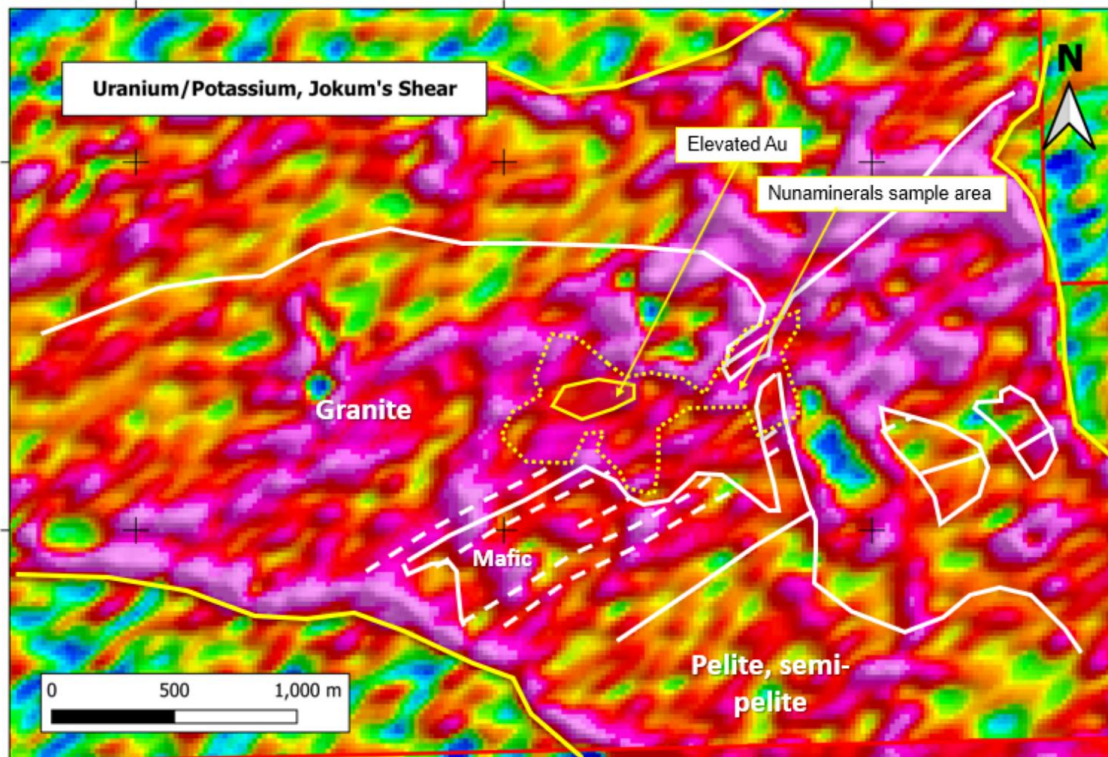
Additionally, the structural arrangement is considered to favour localised concentration of fluids leading to thickening of veins producing a potentially more robust resource.

# JOKUM'S SHEAR

Geophysical coverage included Jokum's Shear Gold-Copper occurrence, a NW-trending gold-bearing shear zone system up to 1 km wide with a strike length of c. 2 km.

Radiometric data demonstrates internal structural complexity with NE-SW, N-S and NW-SE trending lineations observed. The dominant VSW-ESE trend associated with previously interpreted structures is observed in Magnetic data.

Magnetic, radiometric and gravity data acquired in this survey may assist in constraining the shear zone, and identifying localised areas of complexity favourable for mineralising fluids.





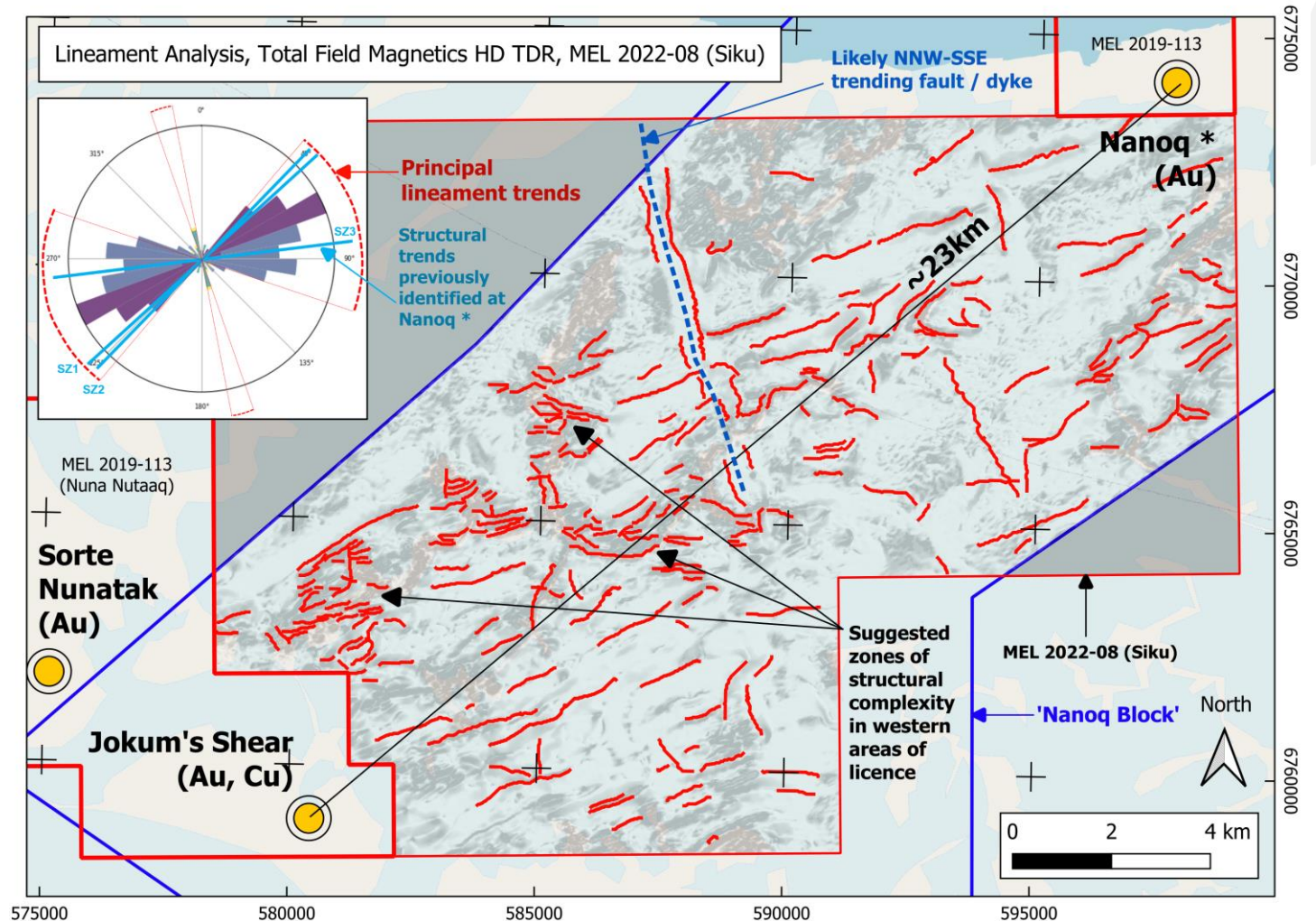
# SIKU LICENCE

*Results support structural link between Jokum's Shear to Nanoq through unexplored Siku licence*

Initial examination of lineaments derived from magnetic geophysical data (Total Field Magnetics, HD-TDR) indicate a pervasive WSW-ENE to WNW-ESE structural trend along the previously hypothesized structural corridor

Data are consistent with gold-mineralised favorable structures previously identified in the Nanoq target area to the north-west of Siku, and supports the concept of a prospective gold bearing corridor between Jokum's Shear and Nanoq (c. 25 km).

Structurally complex areas are considered favourable for orogenic gold deposits as they provide the required fluid pathways for mineralisation





[www.amaroqminerals.com](http://www.amaroqminerals.com)

## CONTACT US

---

AMAROQ MINERALS LTD

3400 One First Canadian Place, PO Box 130, Toronto, On, M5X 1A4, Canada

Eldur Olafsson, Chief Executive Officer



**Amaroq Minerals**

AIM, TSXV, Nasdaq: AMRQ