



**ROCKFIRE**  
RESOURCES

**(LON:ROCK)**

Exploring for gold and copper in Australia and  
Papua New Guinea

# Disclaimer

## Important Information

This presentation has been prepared by Rockfire Resources plc (“**ROCK**” or the “Company”). It should not be considered as an offer or invitation to subscribe for, or purchase any, securities in the Company or as an inducement to make an offer or invitation with respect to those securities. This presentation contains forecasts, projections and forward looking information. Such forecasts, projections and information are not a guarantee of future performance and involve unknown risks and uncertainties, many of which are out of ROCK’s control. Actual results and developments will almost certainly differ materially from those expressed or implied. ROCK has not audited or investigated the accuracy or completeness of the information, statements and opinions contained in this presentation. To the maximum extent permitted by applicable laws, ROCK makes no representation and can give no assurance, guarantee or warranty, express or implied, as to, and takes no responsibility and assumes no liability for (1) the authenticity, validity, accuracy, suitability or completeness of, or any errors in or omission from, any information, statement or opinion contained in this presentation and (2) without prejudice to the generality of the foregoing, the achievement or accuracy of any forecasts, projections or other forward looking information contained or referred to in this presentation. This overview of the Company does not purport to be all inclusive or to contain all information which its recipients may require in order to make an informed assessment of ROCK’s targeted prospects. You should conduct your own investigation and perform your own analysis in order to satisfy yourself as to the accuracy and completeness of the information, statements and opinions contained in this presentation before making any investment decision.

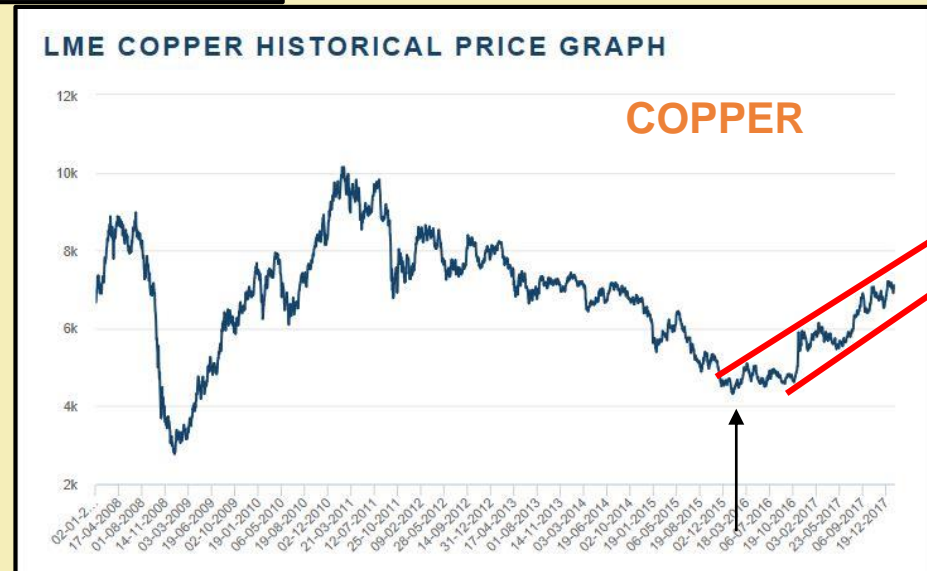
## Rockfire Resources – exploring amongst giants

- ✓ Exploring amongst world-class deposits in Australia and PNG
- ✓ Excellent opportunity for discovery of economic deposits
- ✓ A determined, experienced and successful board of directors
- ✓ Aiming to build a growth company providing returns for investors
- ✓ Low m/cap, low share issue, cash in bank and growth strategy
- ✓ A substantial and increasing portfolio of 100%-owned, highly prospective projects

# Rockfire Resources – 10-year gold and copper



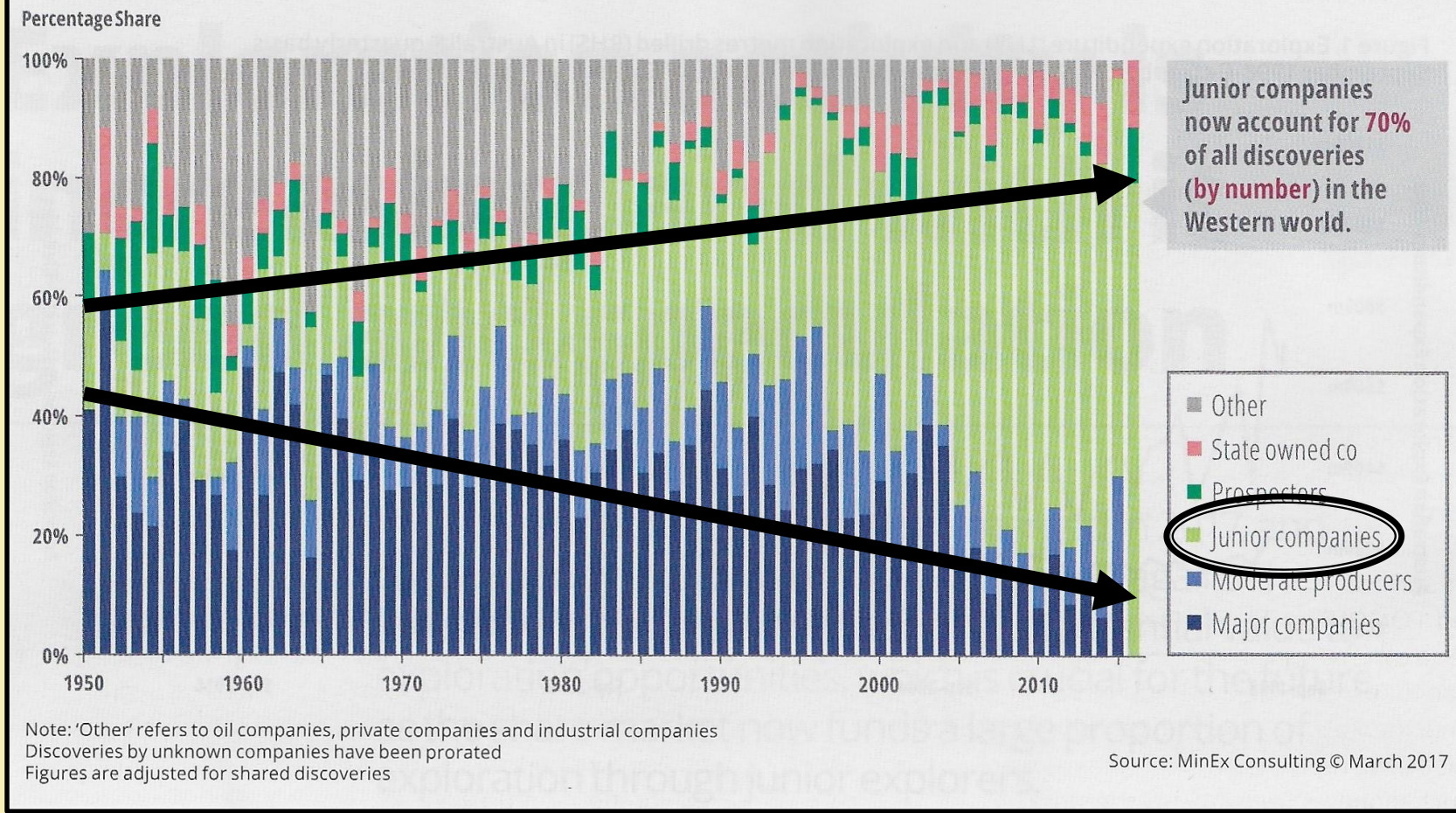
Source: [www.goldprice.org](http://www.goldprice.org)



Source: [www.lme.com/Metals/Non-ferrous/Copper](http://www.lme.com/Metals/Non-ferrous/Copper)

# Rockfire Resources – discovery trend favours juniors

Figure 2. Percentage share of discoveries, per year, according to size / nature of company. Chart is reproduced from Schodde (2017).



**Junior explorers are responsible for over 70% of all new mineral discoveries.**

# Rockfire Resources – company profile

## AIM Code: ROCK

Ordinary Shares (million)	373.34
Market Cap (£0.0135)	£5.05M
Cash at 15 Aug 2018	£0.75M
Debt at 15 Aug 2018	£0

Shareholder	Shares (M)	%
Michael Somerset-Leeke	51.15	13.70
Nicholas Walley	37.52	10.05
Value Generation/P.& M. Johnson	30.96	8.29
Salida Capital (Europe) Limited	14.89	3.99
David W Price *	13.60	3.64
Edward Fry *	13.00	3.48
South Pacific Mining Holdings Limited	11.38	3.05
* denotes directors and management		46.20

## Directors & Management

Gordon Hart	Executive Chairman
David Price	Managing Director & CEO
Edward Fry	Exploration Manager

Directors & Management hold 7.12% of PML<sub>6</sub>

**ROCKFIRE**

# Rockfire Resources – board of directors and management

- Gordon Hart **Chairman**

*Equities and Finance, (+35 years experience)*

*Graduate of Institute of Company Directors*

Venture Group Equities, GB Energy,

Convergent Minerals, Information



- David Price **Managing Director and CEO (FAusIMM)**

*Geologist, (30 years experience)*

Australia, PNG, Fiji, China, Greece, Austria

Convergent Minerals, Golden Tiger Mining, Danae

Resources, Hargraves Resources, Placer Pacific



- Edward Fry **Exploration Manager (MAusIMM)**

*Geologist, (10 years experience)*

Australia, Papua New Guinea, China

Mill Resources, Artemis Resources, BGM

Investments, Kings Minerals, Convergent

Minerals, Legend International, Golden Tiger

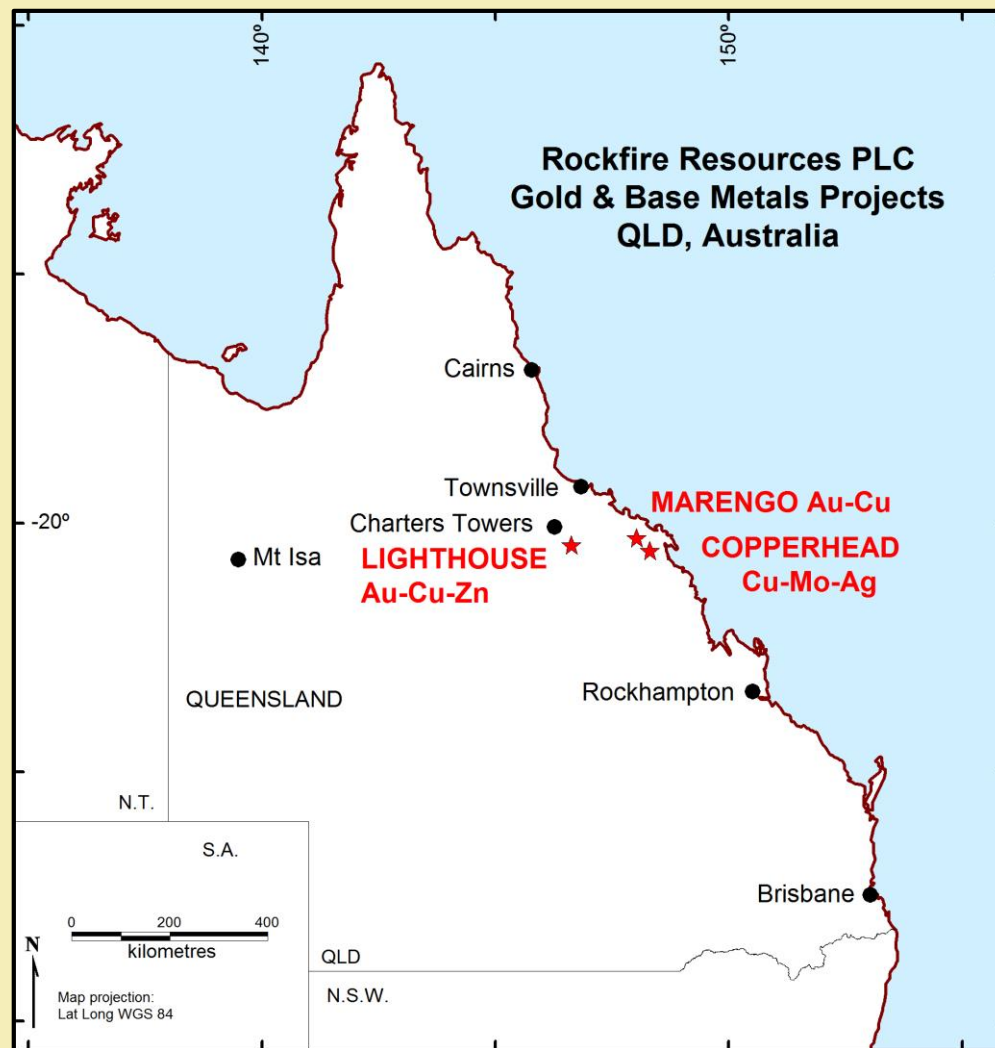
Mining,



# Australia

ROCK owns 100%  
of all tenements

- **'Lighthouse'** Breccia-hosted Au/Cu +/- Ag  
*Sits amongst giants*
- **'Marengo'** Epithermal Au/Cu, IRGS  
*Historical goldfield (1871)*
- **'Copperhead'** Porphyry Cu  
*Included in the USGS 'Global Mineral Resource Assessment'*

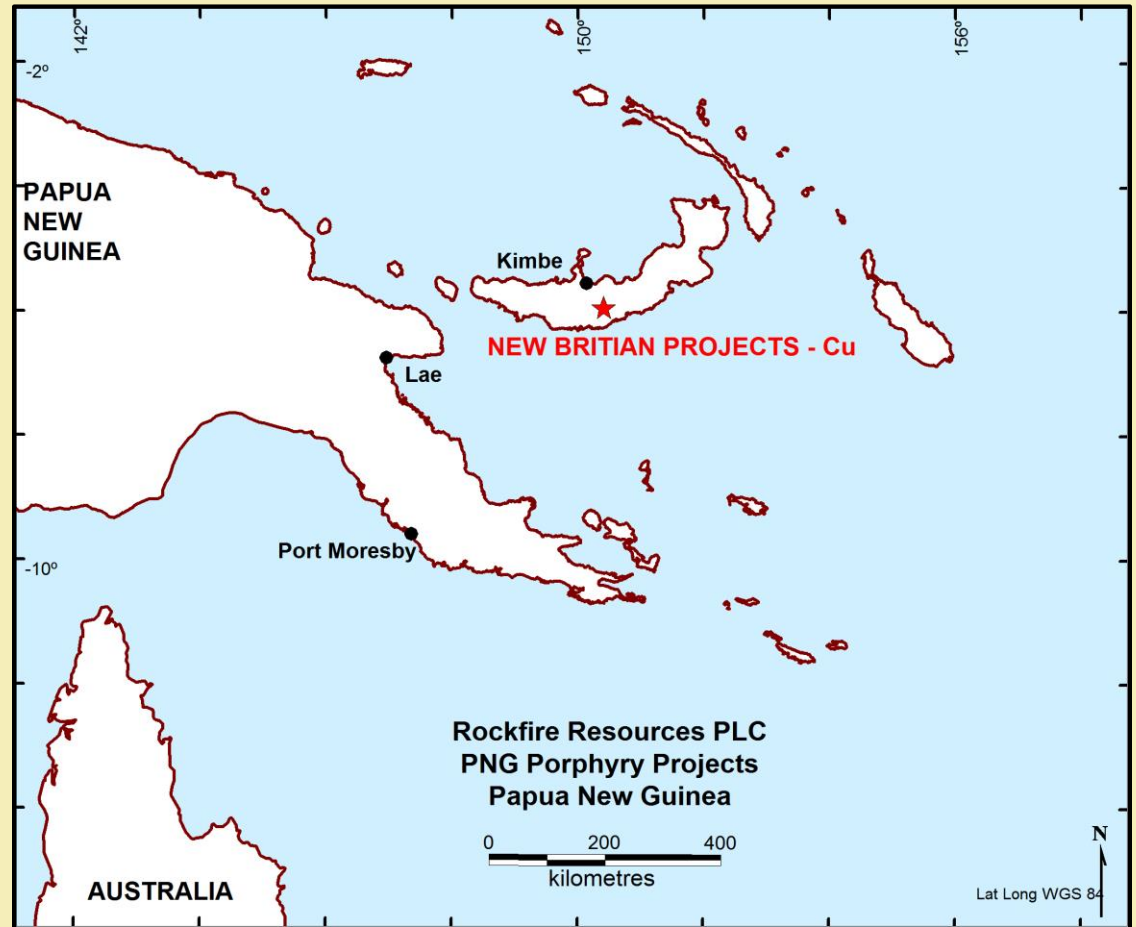




# Papua New Guinea

ROCK owns 100%  
of all tenements

- **'Tripela'** Porphyry Cu  
Rocks up to 29% Cu at surface
- **'Mount Visi'** Porphyry Cu  
New discovery, rocks up to 35.5  
g/t Au and 4% Cu.





# Lighthouse

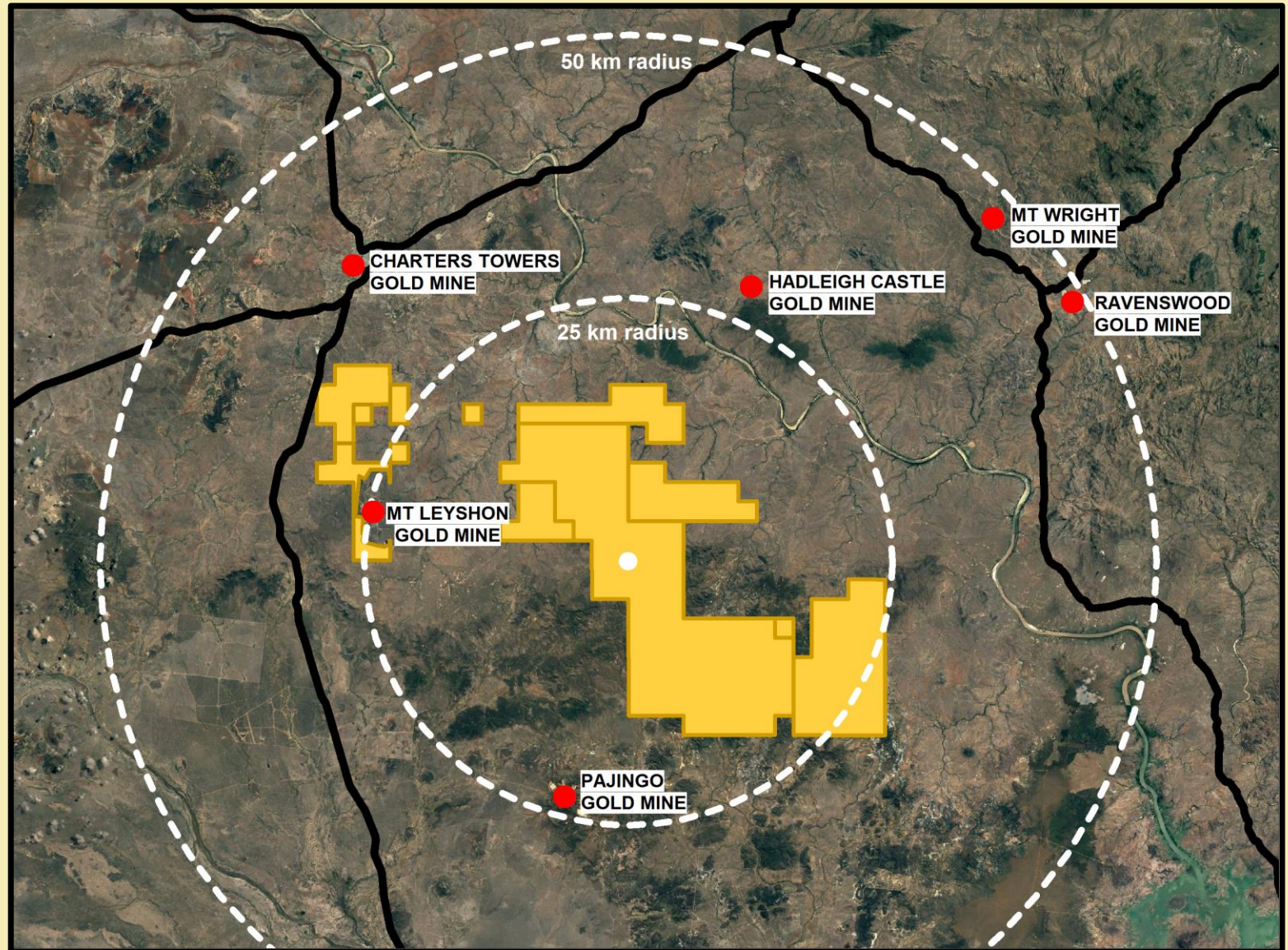
Queensland, Australia

636 sq. km.

Multiple breccia, epithermal and  
vein-hosted mineralising systems

# Lighthouse STRATEGIC LAND ACCUMULATION

**Regional  
production  
+20moz Au**



**ROCKFIRE**

Lighthouse **PLATEAU PROSPECT**  
Open pit mine potential

December 2017 drilling:

- 22m @ 1.9 g/t Au + 22.3 g/t Ag  
**(39m downhole)**
- 20m @ 0.5 g/t Au + 2.5 g/t Ag  
**(16m downhole)**
- 10m @ 1.9 g/t Au + 9.0 g/t Ag  
**(18m downhole)**
- 18m @ 1.0 g/t Au + 10.5 g/t Ag  
**(119m downhole)**

RC DRILLING DECEMBER 2017

ROCKFIRE

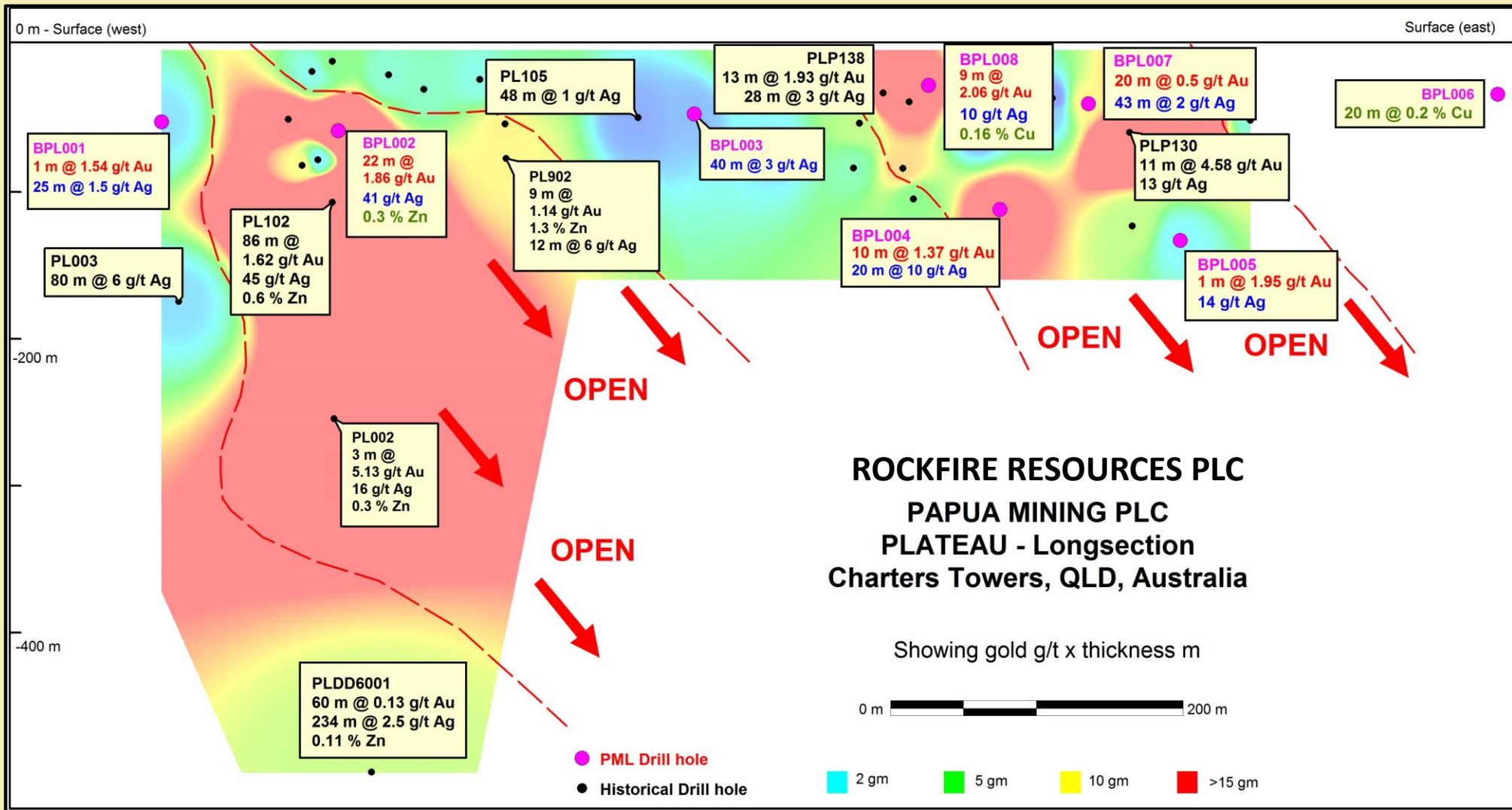
Historical drilling:

- 44m @ 2.4 g/t Au
- 10m @ 5.0 g/t Au
- 8m @ 3.0 g/t Au
- 14m @ 2.4 g/t Au
- 3m @ 4.9 g/t Au



2m @ 1.1g/t Au from 645m downhole

# Lighthouse PLATEAU PROSPECT – open at depth



## Lighthouse **DOUBLE EVENT PROSPECT** 3 kilometres long

- Gold assays include; 37.7 g/t, 33.3 g/t, 33.1 g/t, 25.9 g/t, 24.3 g/t, 23.5 g/t
- Silver assays include; 56.8 g/t, 54.0 g/t, 52.7 g/t, 46.7 g/t, 38.7 g/t and 37.1 g/t
- Lead assays include; 4.46%, 3.64% and 3.29% Pb
- The average of all rock samples collected is 8.45 g/t Au.
- A quarter of all samples (25%) returned gold in excess of 10 g/t Au.

**ROCK SAMPLING FEB 2018**

Rockfire Resources plc				
Lighthouse Project, Double Event Prospect				
Rock sampling February 2018				
Sample Number	Au ppm	Ag ppm	Pb ppm	Pb %
BDERS001	19.15	52.70	13,750	1.38
BDERS005	7.85	14.55	4,570	0.46
BDERS008	21.50	23.90	18,500	1.85
BDERS014	13.80	24.30	12,300	1.23
BDERS017	6.25	12.05	1,035	0.10
BDERS018	37.70	46.70	18,250	1.83
BDERS021	21.90	26.10	8,940	0.89
BDERS022	33.30	32.20	17,150	1.72
BDERS023	7.11	19.40	4,260	0.43
BDERS027	9.41	17.45	7,030	0.70
BDERS029	5.55	6.65	2,450	0.25
BDERS030	15.80	7.70	6,700	0.67
BDERS033	3.62	29.10	209	0.02
BDERS036	3.08	2.49	2,490	0.25
BDERS037	33.10	13.95	3,910	0.39
BDERS038	7.54	9.21	15,650	1.57
BDERS039	7.22	12.85	2,160	0.22
BDERS041	23.10	56.80	44,600	4.46
BDERS042	24.30	17.20	16,000	1.60
BDERS045	8.77	37.10	32,900	3.29
BDERS048	25.90	38.70	36,400	3.64
BDERS049	23.50	17.30	1,480	0.15

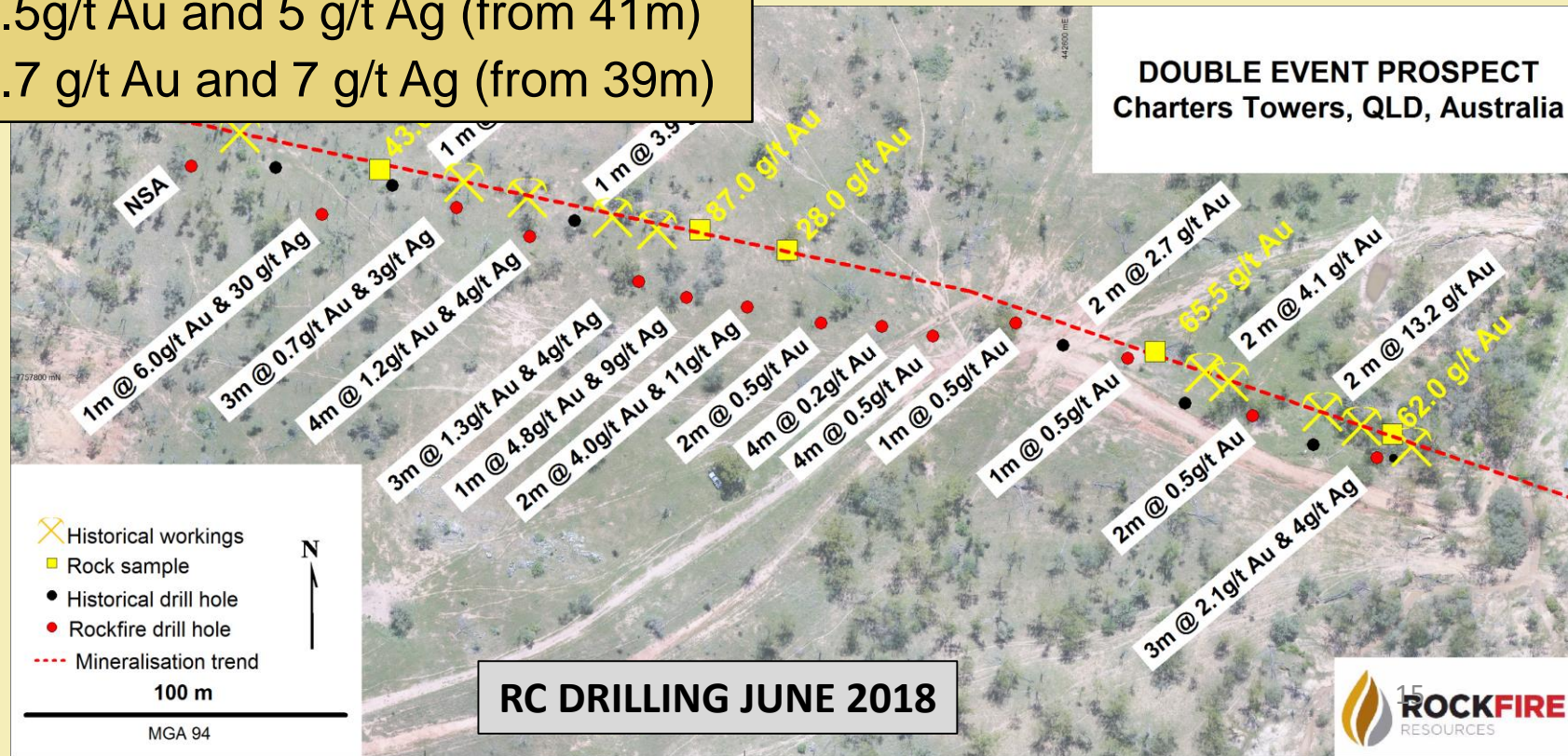
# Lighthouse DOUBLE EVENT PROSPECT

## July 2018 drilling:

- 3m @ 2.1 g/t Au and 4 g/t Ag (from 23m)
- 4m @ 1.2 g/t Au and 4 g/t Ag (from 24m)
- 1m @ 6.0 g/t Au and 30 g/t Ag (from 25m)
- 3m @ 1.3g/t Au and 4 g/t Ag (from 10m)
- 2m @ 2.5g/t Au and 5 g/t Ag (from 41m)
- 3m @ 2.7 g/t Au and 7 g/t Ag (from 39m)

## Battle Mountain drill results 1987

- 2m @ 13.2 g/t Au
- 4m @ 4.65 g/t Au
- 1m @ 3.93 g/t Au
- 4m @ 2.87g/t Au
- 1m @ 3.25g/t Au
- 1m @ 2.94g/t Au
- 2m @ 2.7g/t Au





# Marengo

Queensland, Australia

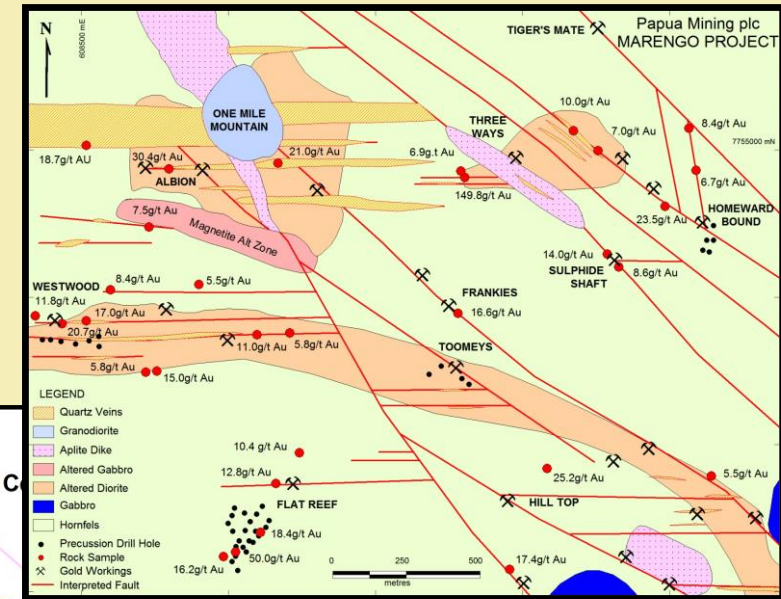
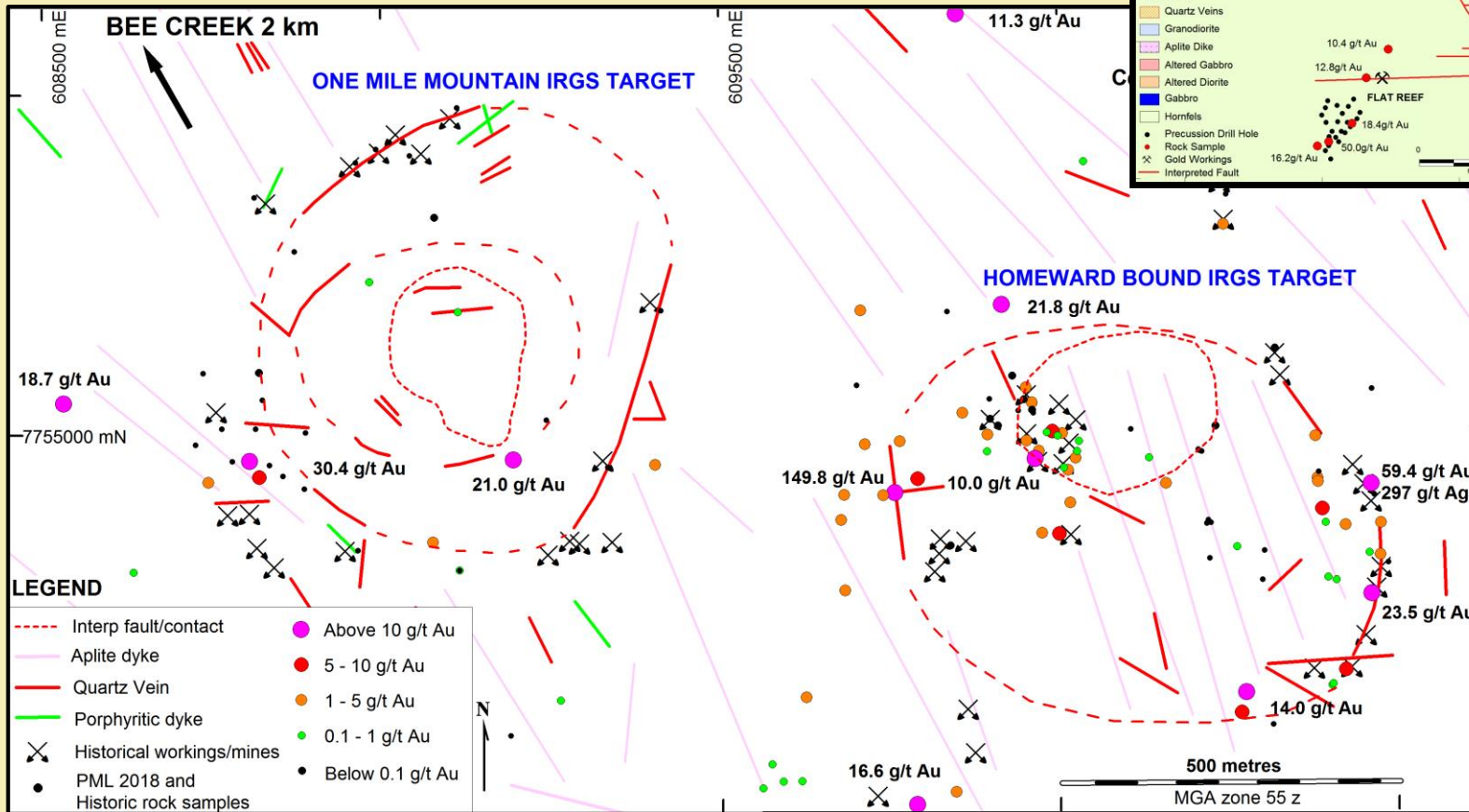
180 sq. km.

Epithermal and Intrusion-  
related gold system (IRGS)



# Marengo TWO LARGE INTRUSIONS

- One Mile Mountain is undrilled
- Historical rocks up to 149 g/t Au
- Faults, ring fractures, veining, sulphides and alteration



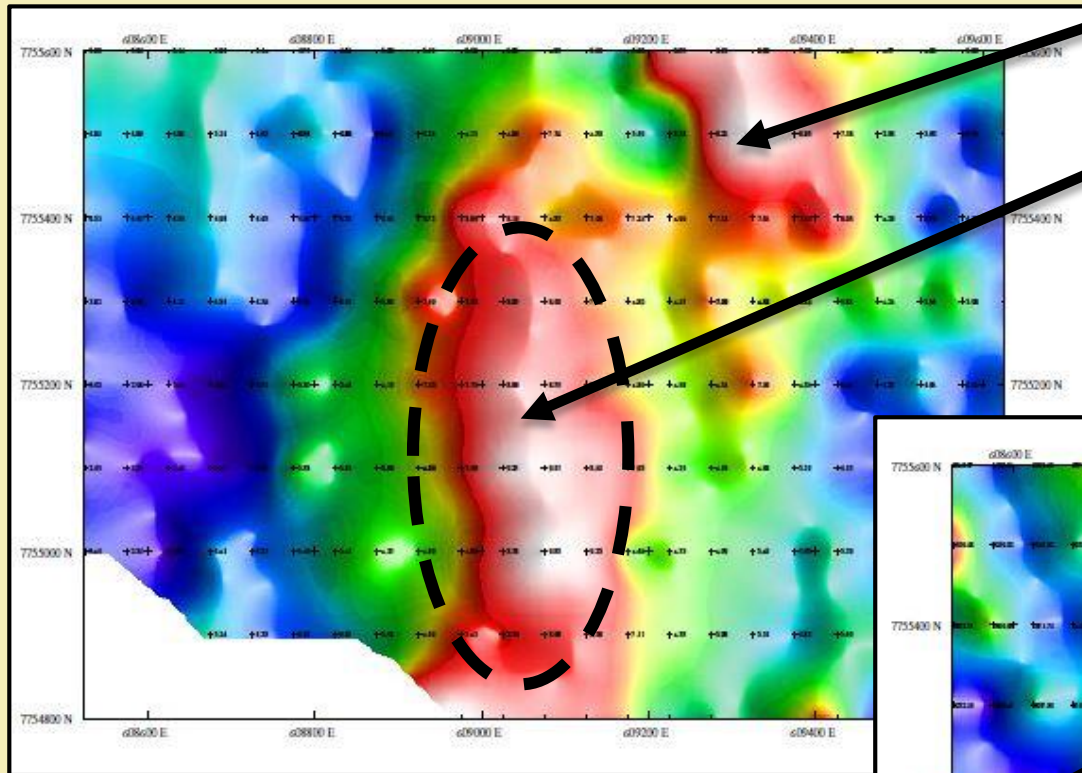
## Marengo HIGH GRADES AT SURFACE



69 rock samples collected - maximum assays were 59.4 g/t Au, 17.7 % Cu and 342 g/t Ag;

SAMPLE DESCRIPTION	Au ppm	Ag ppm	Cu ppm	Cu %
BMARS010	3.32	2.1	1,845	0.2
BMARS012	2.92	13.6	1,770	0.2
BMARS013	1.14	2.7	2,060	0.2
BMARS016	2.40	16.7	24	
BMARS017	4.11	2.4	456	
BMARS019	21.80	21.1	162	
BMARS025	2.27	25.9	60	
BMARS028	59.40	297.0	110	
BMARS029	15.60	165.0	9	
BMARS035	2.86	13.3	47	
BMARS038	0.36	0.7	35,000	3.5
BMARS039	0.01	0.3	46,000	4.6
BMARS040	3.18	3.7	1,140	
BMARS044	28.20	146.0	31	
BMARS051	0.68	8.3	3,400	0.3
BMARS052	34.30	99.0	102	
BMARS053	3.70	3.5	29,000	2.9
BMARS057	<0.01	4.4	3,710	0.4
BMARS058	0.06	70.6	51,000	5.1
BMARS059	0.15	183.0	173,000	17.3
BMARS060	0.03	37.3	70,000	7.0
BMARS061	0.17	7.7	7,930	0.8
BMARS062	0.37	342.0	177,000	17.7
BMARS064	0.11	7.6	4,360	0.4
BMARS066	0.18	13.0	1,580	0.2

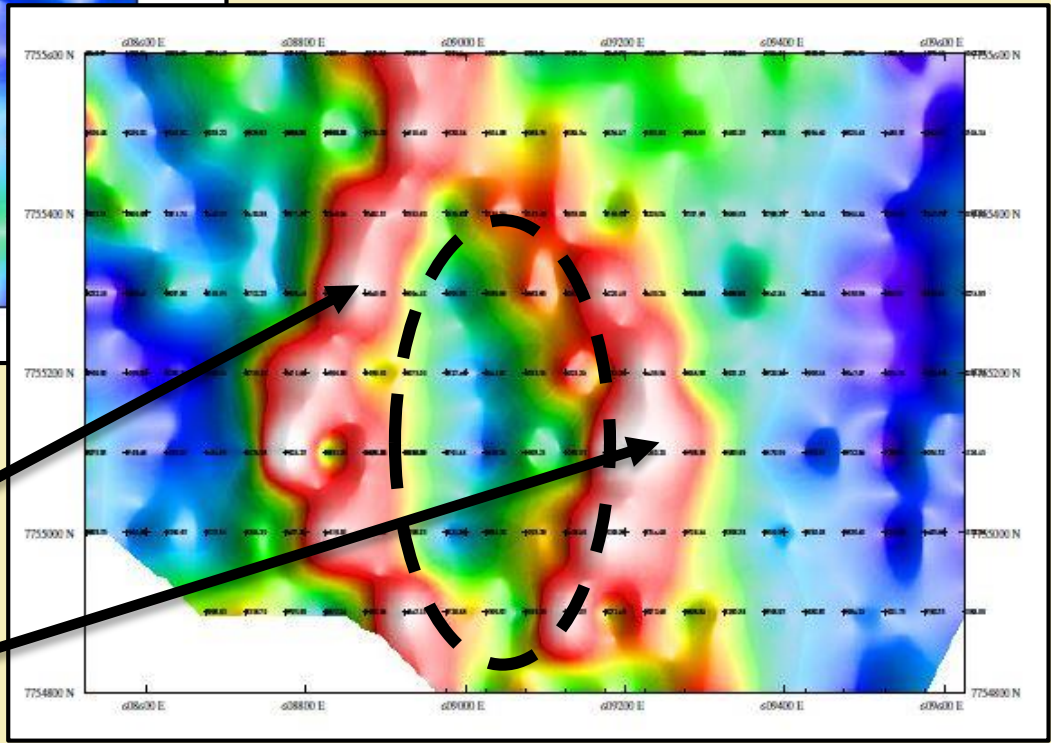
# Marengo ONE MILE MOUNTAIN GEOPHYSICS



Possible copper porphyry with up to 1-2% sulphides

**GEOPHYSICS MAY 2018**

Gradient Array chargeability high anomaly



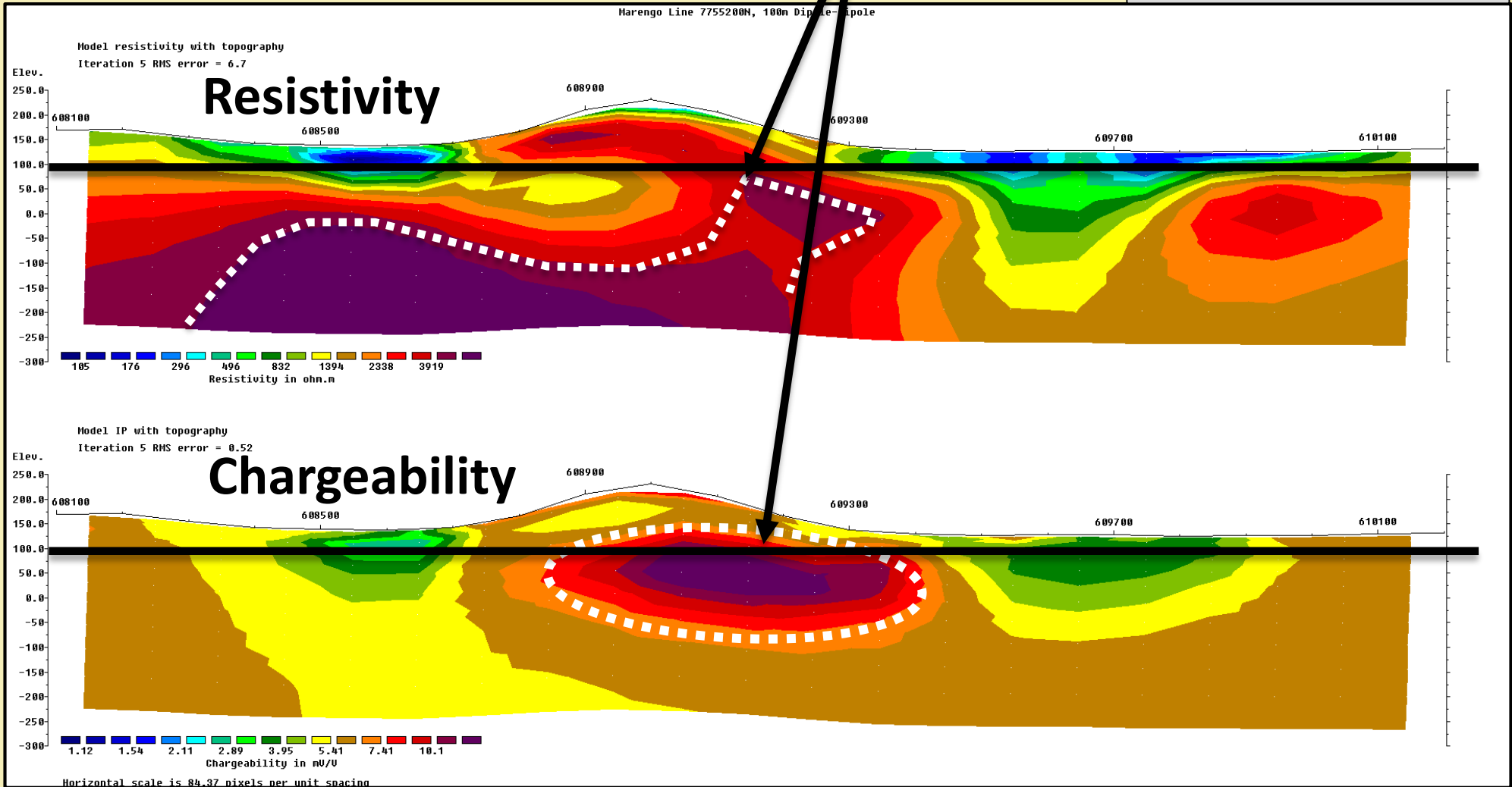
Possible epithermal vein gold system with silica alteration

Gradient Array resistivity low anomaly

Possible top of porphyry copper

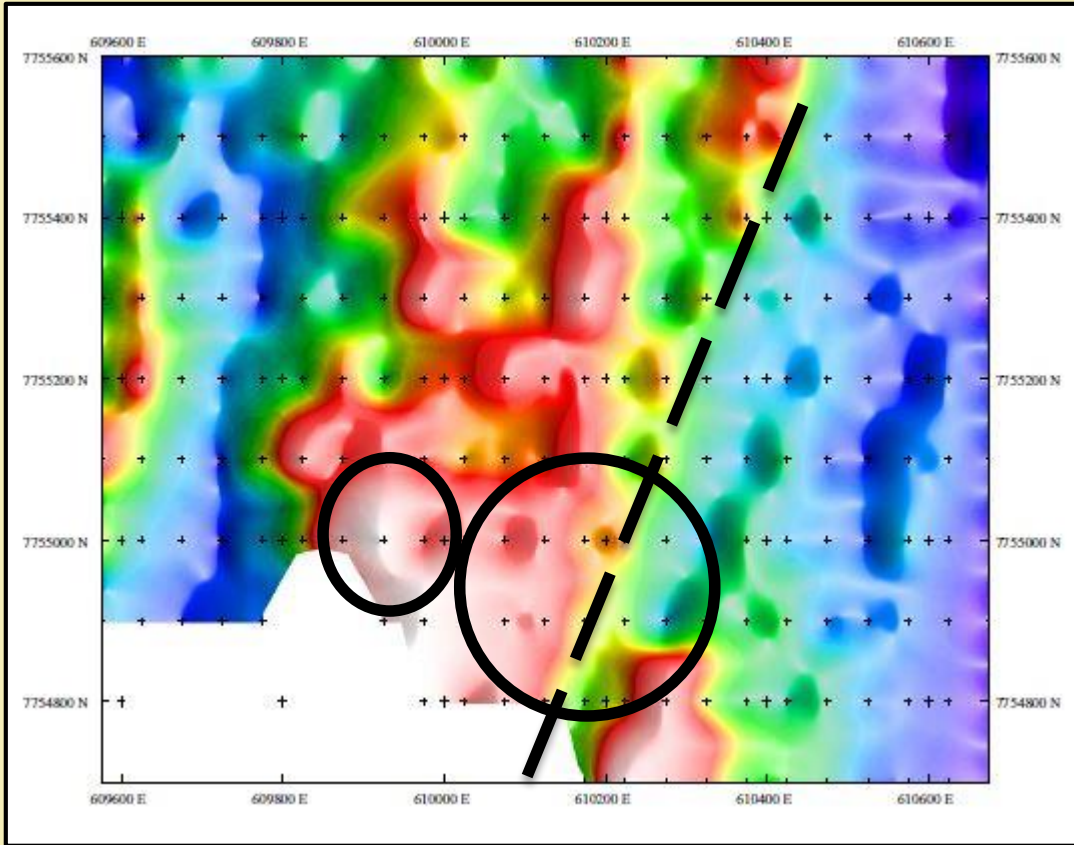
Dipole-Dipole survey May 2018

GEOPHYSICS MAY 2018

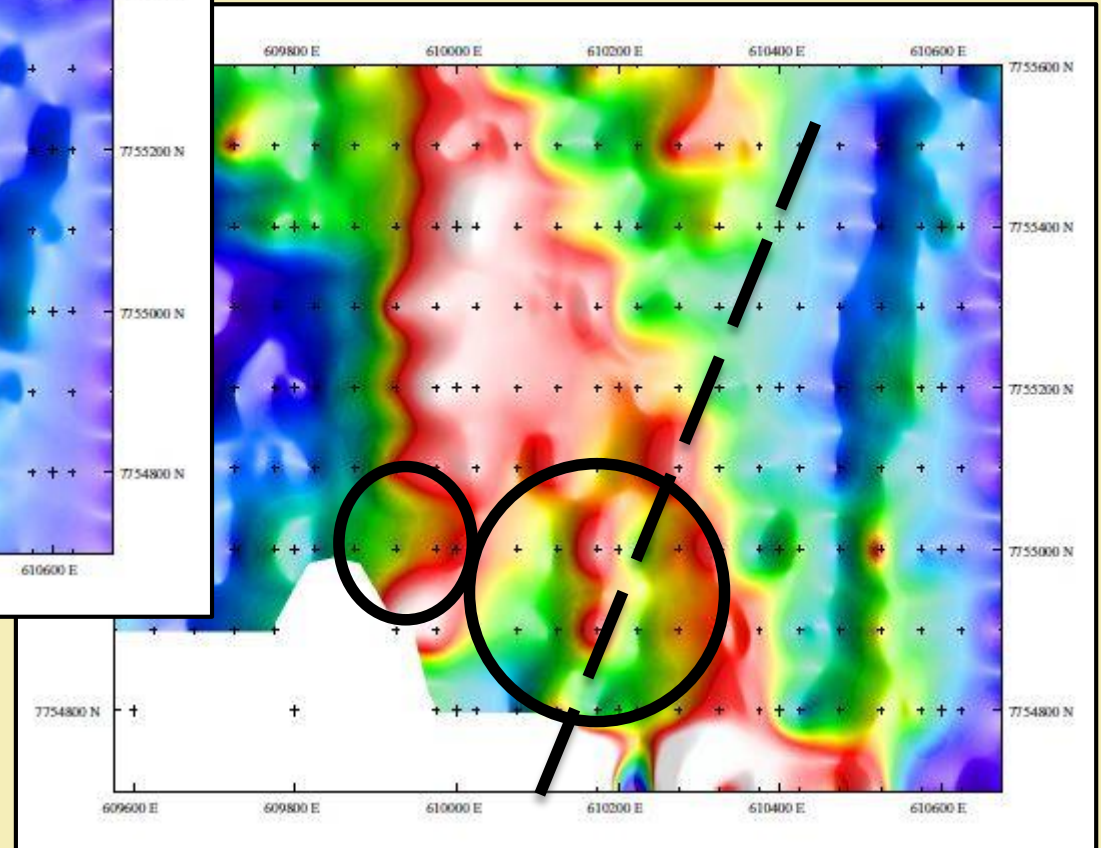


# Marengo **HOMEWARD BOUND PROSPECT**

**GEOPHYSICS MAY 2018**

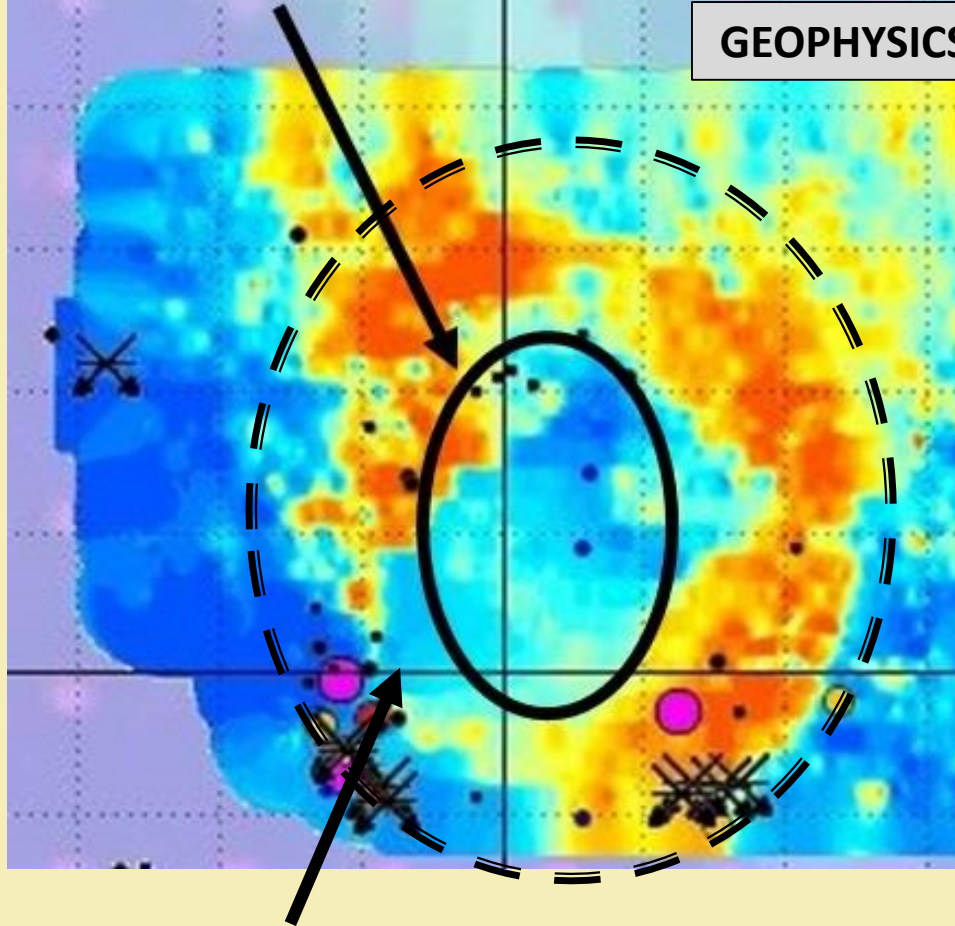


Gradient Array chargeability high anomaly



Gradient Array resistivity low anomaly

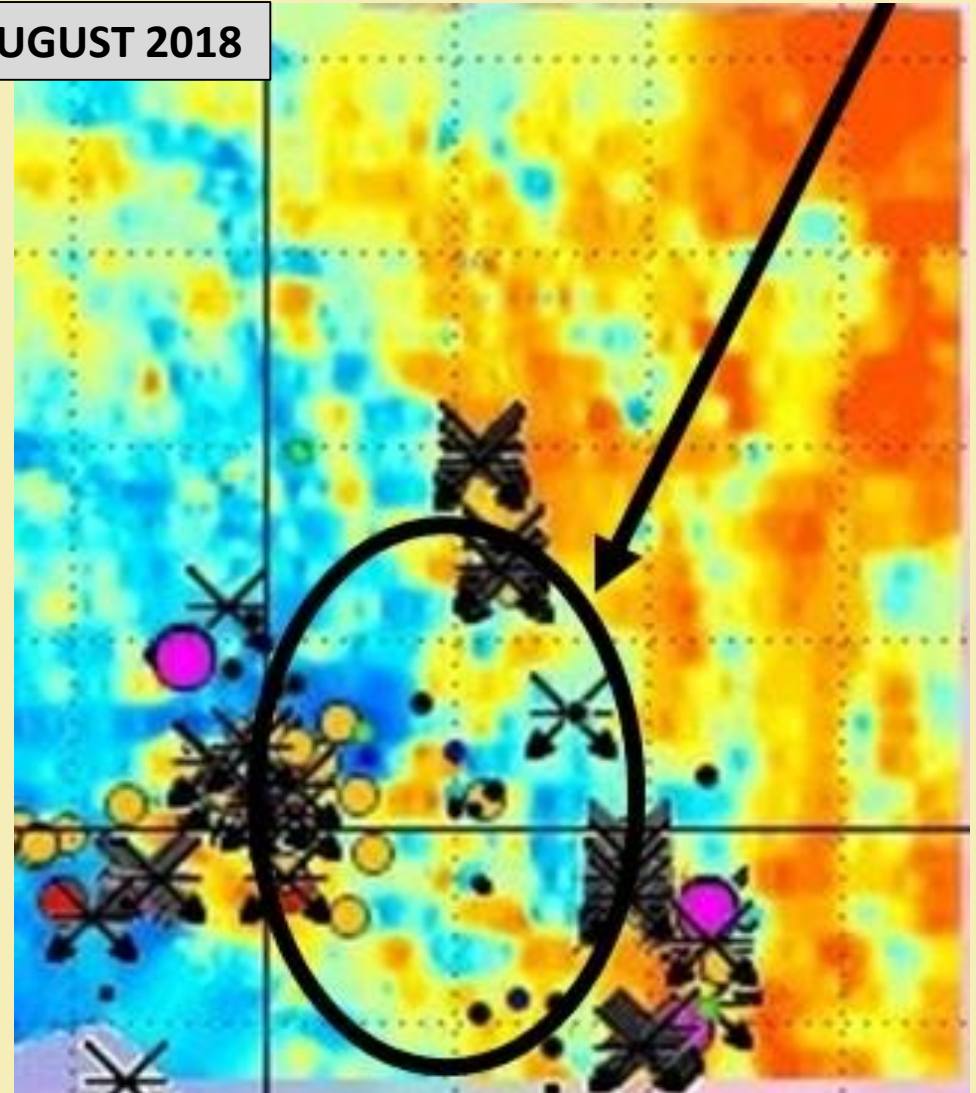
## One Mile Mountain



Partially demagnetised alteration aureole

**ROCKFIRE**

## Homeward Bound





# Copperhead

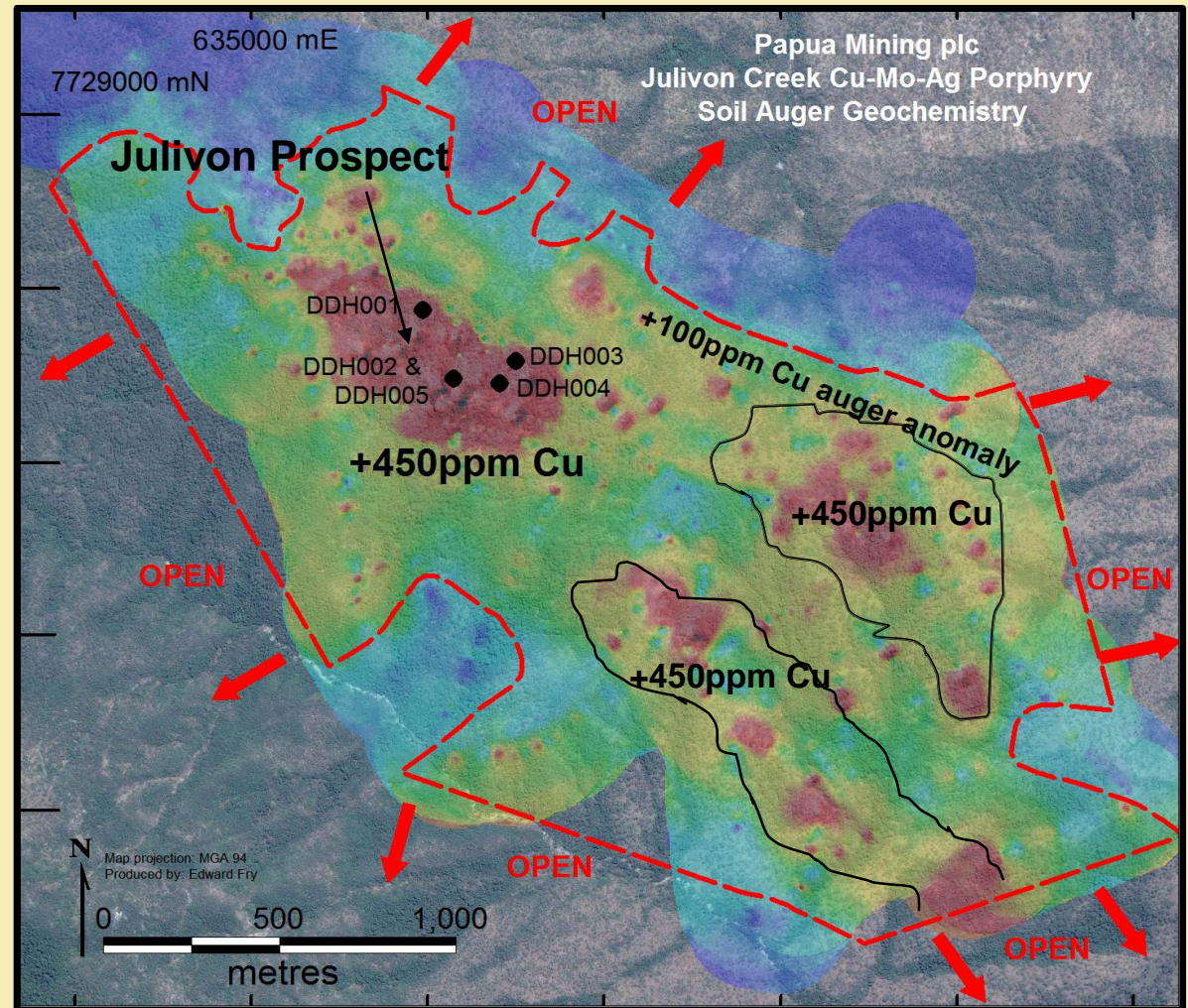
Queensland, Australia

96.5 sq. km.

Porphyry Copper

## Copperhead A LARGE-SCALE PROJECT

- 1970 Cu vein discovered at Julivon in 1970
- Auger drilling outlined a coherent +100ppm copper-in-soil anomaly in excess of 3km x 2km
- 5 holes by Carpentaria Exploration in 1972. (weighted average 0.25% Cu + 2.1g/t Ag)
- Includes 2.81% Cu + 12g/t Ag potential for high-grade



Listed in the USGS 'Global Mineral Resource Assessment'



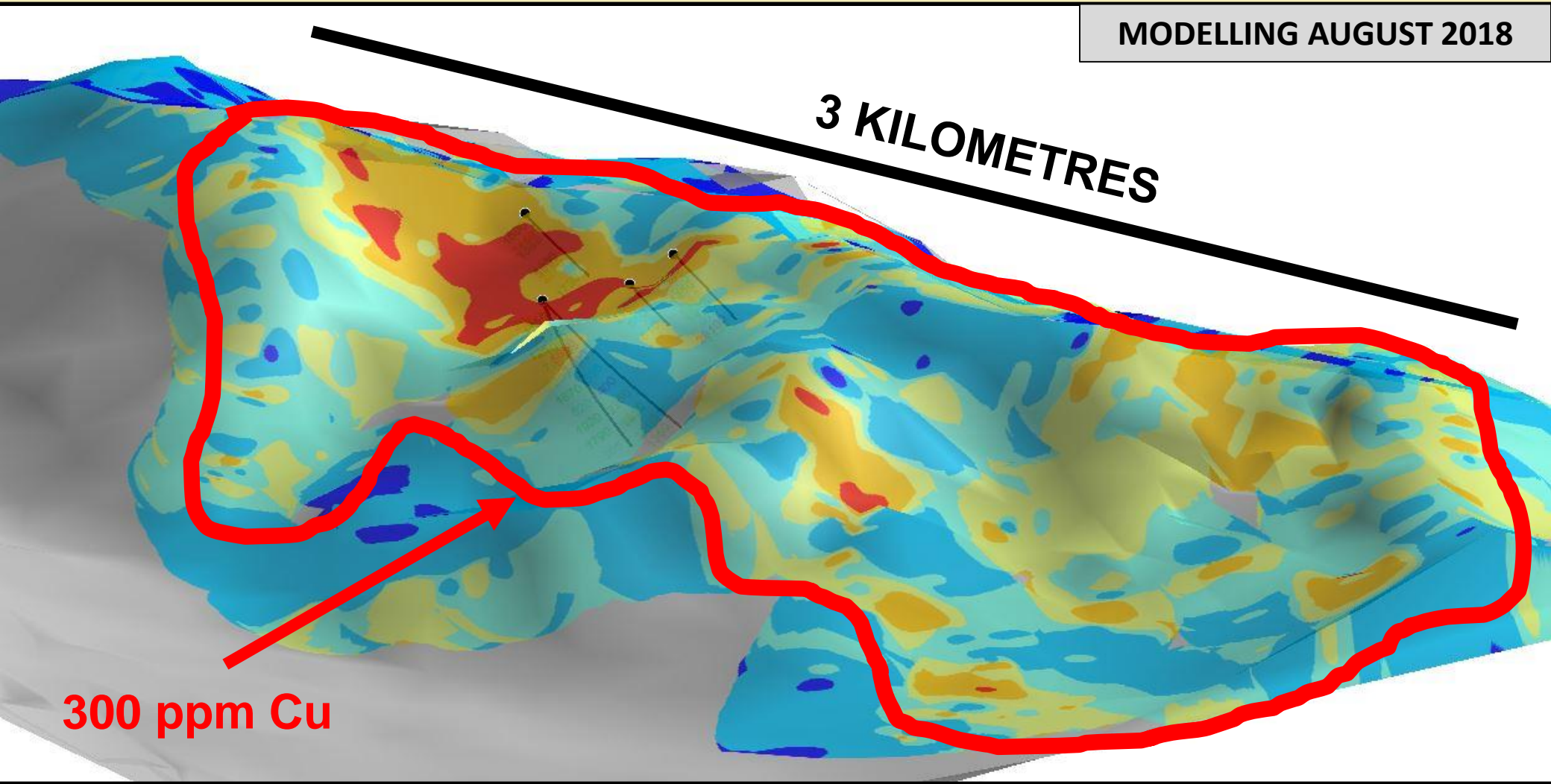
# Copperhead A LARGE COPPER ANOMALY

MODELLING AUGUST 2018

3 KILOMETRES

300 ppm Cu

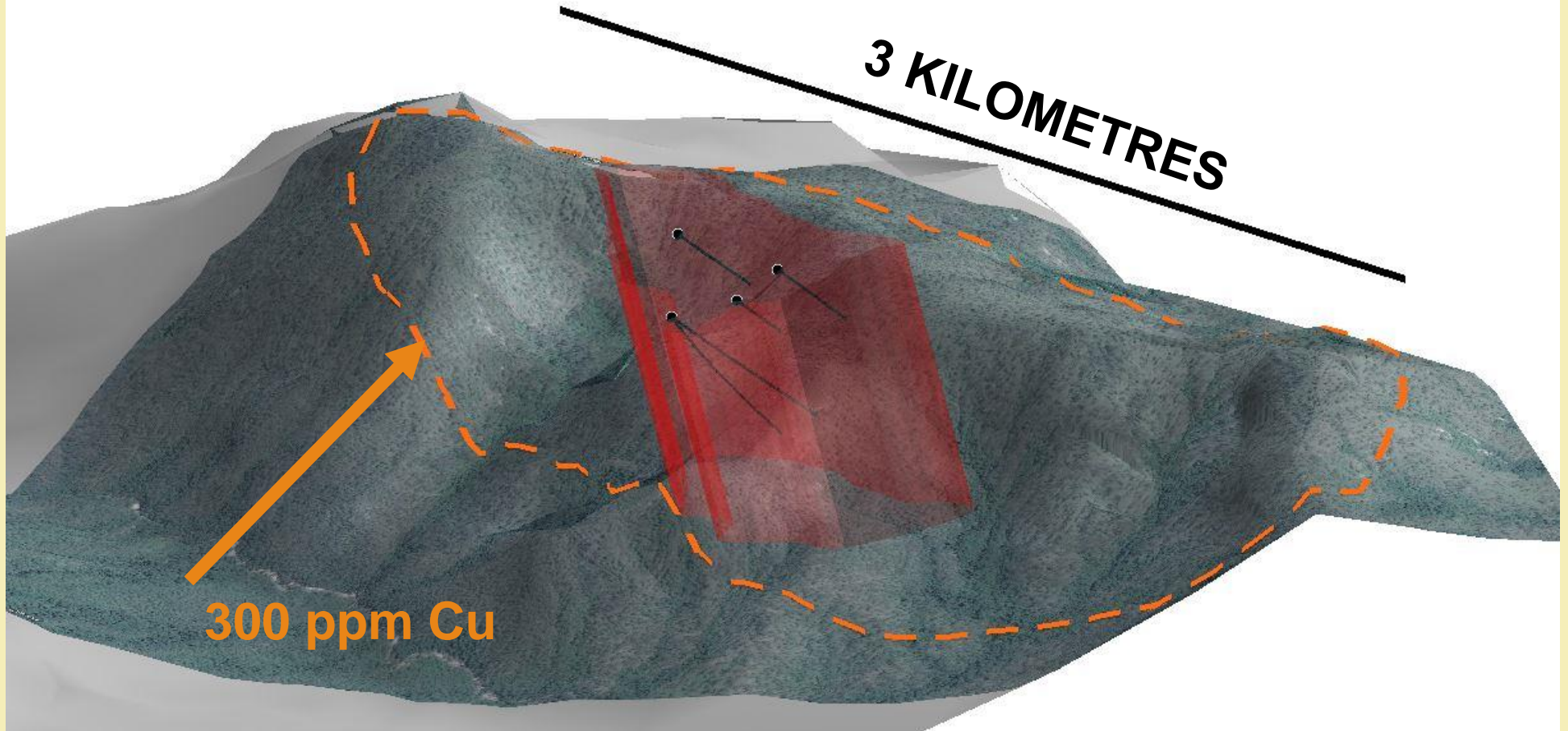
ROCKFIRE



## Copperhead **COPPER PLUNGING TO DEPTHS BEYOND 300m**

MODELLING AUGUST 2018

\*\* Target resource of 200Mt – 300Mt  
grading between 0.2% and 0.3% Cu



## Copperhead OPPORTUNITY WITH INFRASTRUCTURE

- Large, quality water supply
- Australia's largest copper refinery



Lake Proserpine  
20km from Copperhead

*There is no certainty that Rockfire Resources will be permitted to utilise any of the infrastructure shown. Neither the owners of the water supply, nor the owners of the refinery have been approached by the company and no discussion has commenced with any authorities regarding the use of this infrastructure.*



Glencore's Copper Refinery  
280km from Copperhead

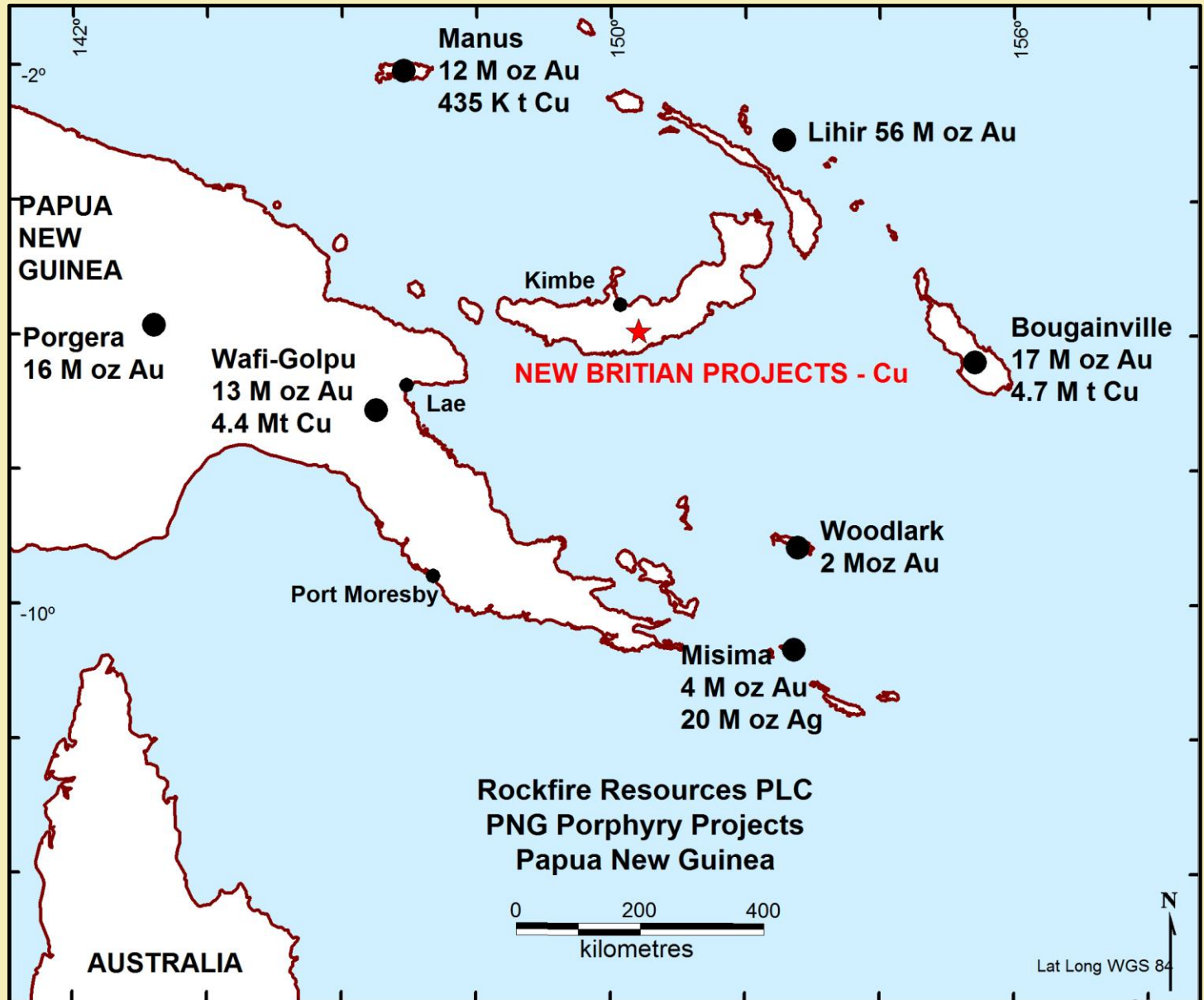


# Papua New Guinea

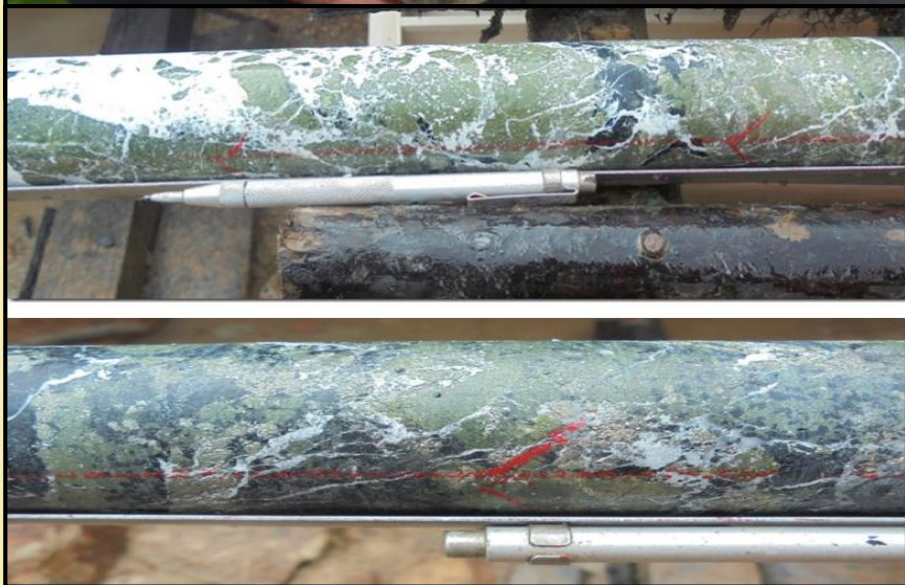
New Britain  
(297.6 sq. km)

Porphyry copper/gold

# Papua New Guinea 'ELEPHANT' TERRITORY



# Tripela INTENSELY SHEARED AND ALTERED



**ROCKFIRE**

# Rockfire Resources

## what we have achieved!

### Lighthouse

- X Geophysics at Plateau (review old geophysics)
- ✓ RC drilling Plateau
- ✓ RC drilling Double Event
- ✓ Regional assessment

### Marengo

- ✓ Geophysics at One Mile Mountain
- ✓ Rock sampling
- X XRF survey One Mile Mtn (outcrop too sporadic)

## what can you expect?

### Lighthouse

- RC drilling at Double Event
- Further regional assessment

### Marengo

- RC drilling
- Further geophysics (Dipole-dipole IP)

### Copperhead

- Geophysics (Gradient Array IP)

✓ Completed

• Scheduled

X Cancelled



**ROCKFIRE**  
RESOURCES

**(LON:ROCK)**

[www.rockfireresources.com](http://www.rockfireresources.com)

Salisbury House, London Wall  
London EC2M 5PS, England