

A landscape photograph of a mountain range at dusk or dawn, with a red diagonal graphic element in the top right and bottom left corners.

**Diversified Explorer and Developer
Emerging Frontier Provinces**

Africa Down Under
Perth, August 2018

Disclaimer

IMPORTANT NOTICE

These presentation slides (the “Slides”) have been issued by IronRidge Resources Limited (the “Company”) in relation to an update on activities by the Company. These Slides do not comprise an admission document, listing particulars or a prospectus relating to the Company, do not constitute an offer or invitation to purchase or subscribe for any securities of the Company and should not be relied on in connection with a decision to purchase or subscribe for any such securities. The Slides and the accompanying verbal presentation do not constitute a recommendation regarding any decision to sell or purchase securities in the Company.

The Slides and the accompanying verbal presentation are confidential and the Slides are being supplied to you solely for your information and may not be reproduced or distributed to any other person or published, in whole or in part, for any purpose. No reliance may be placed for any purpose whatsoever on the information contained in the Slides and the accompanying verbal presentation or the completeness or accuracy of such information. No representation or warranty, express or implied, is given by or on behalf of the Company, directors, officers, employees, agents or advisors or any other person as to the accuracy or completeness of the information or opinions contained in the Slides and the accompanying verbal presentation, and no liability is accepted by such persons for any such information or opinions or otherwise arising in connection therewith (including in the case of negligence, but excluding any liability for fraud).

The Slides contain certain statements and expressions of belief, expectation or opinion which are forward-looking statements, and which relate, inter alia, to the Company’s proposed strategy, plans and objectives or to the expectations or intentions of the Company’s directors. Such forward-looking statements involve known and unknown risks, uncertainties and other important factors beyond the control of the Company that could cause the actual performance or achievements of the Company to be materially different from such forward-looking statements. Accordingly, you should not rely on any forward-looking statements and neither the Company nor SP Angel accept any obligation to disseminate any updates or revisions to such forward-looking statements. Any statement as to the past activities of the Company’s directors should not be relied upon as being an indication of their future performance.

The Slides have not been approved by an authorised person for the purposes of section 21 of the Financial Services and Markets Act 2000 (“FSMA”). They are exempt from the general restriction on the communication of invitations or inducements to engage in investment activity set out in section 21 of FSMA on the grounds that they are directed only at those persons who have professional experience in matters relating to investments and who are: (i) investment professionals (within the meaning of article 19(5) of The Financial Services and Markets Act 2000 (Financial Promotion) Order 2005 as amended (the “FPO”)); (ii) persons or entities of a kind described in article 49(2)(a) to (d) of the FPO; and (iii) other persons who have professional experience in matters relating to investments and to whom it may otherwise lawfully be communicated (all such persons together being referred to as “Relevant Persons”). Any investment, investment activity or controlled activity to which the Slides relate is available only to Relevant Persons and will be engaged in only with Relevant Persons. Persons of any other description, including those that do not have professional experience in matters relating to investments, should not rely or act upon the Slides. Reliance on the communication set out in these Slides for the purpose of engaging in any investment activity may expose an individual to a significant risk of losing all of the property invested or of incurring additional liability. Any individual who is in any doubt about the investment to which these Slides relate should consult an authorised person specialising in advising on investments of the kind referred to in these Slides.

Pursuant to the Market Abuse Regulation (Regulation 596/2014) (“MAR”), the Slides constitute a market sounding for the purposes of Article 11 of MAR. By accepting the Slides, you warrant that you are able to receive market soundings, consent to receiving inside information, acknowledge that you are prohibited from using any inside information disclosed to you in any manner and agree to keep the inside information confidential. You irrevocably give your consent for your name to be entered on the Company’s insider list and any other Company records regarding the provision of the Slides or the discussion of their content.

Information in this report relating to the exploration results is based on data reviewed by Mr Lennard Kolff (MEcon. Geol., BSc. Hons ARSM), Chief Geologist of the Company. Mr Kolff is a Member of the Australian Institute of Geoscientists (AIG) who has in excess of 20 years’ experience in mineral exploration and is a Qualified Person under the AIM Rules. Mr Kolff consents to the inclusion of the information in the form and context in which it appears.

High-Grade Lithium Discovery - GHANA
High-Grade Gold Discovery - CHAD
Gold & Lithium Portfolio - COTE D'IVOIRE
Len Kolff -Chief Geologist

Corporate Overview



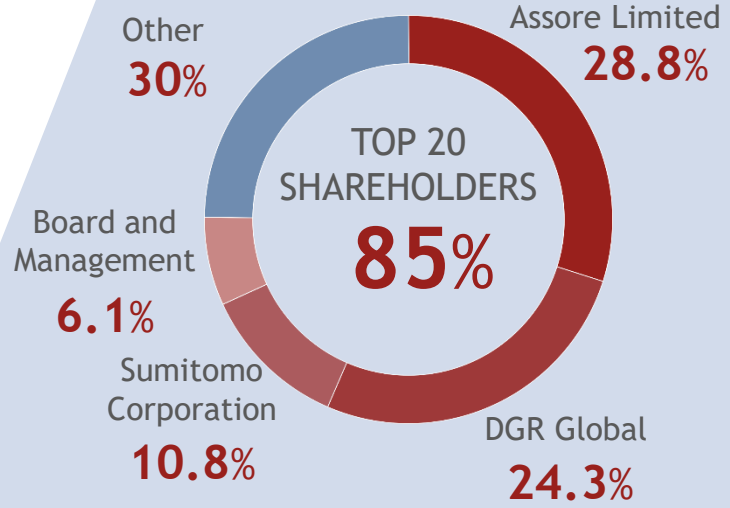
Capital Structure

AIM: **IRR**

Issued Capital	281.9m
Options	30.5m
Fully-diluted Share Capital	312.4m
Market Capitalisation (24p) (28 August 2018)	£68m
Cash Balance (31 Dec 2017)	US\$10.9m



Major Shareholders



Directors & Management

- Neil Herbert
Non-Executive Chairman
- Vincent Mascolo
Managing Director & CEO
- Nick Mather
Non-Executive Director
- Stuart Crow
Non-Executive Director
- Alistair McAdam
Non-Executive Director
- Bastiaan van Aswegen
Non-Executive Director
- Ken Tsubaki
Non-Executive Director
- Len Kolff
Chief Geologist

Right DNA for Discovery, Diversity & Growth



Explorer

- DGR Global Limited - ASX listed
- Project generator, founder and creator of IronRidge
- Project generation, exploration and discovery expertise



Developer

- Assore Limited - JSE listed
- South African supplier of raw material to the world's steel mills and alloy plants
- South African iron, chrome and manganese mining specialist



Conglomerate

- Sumitomo Corporation
- Global network encompassing over 66 countries
- A global resource, mining, marketing and trading conglomerate

Wealth Creation

Exploration

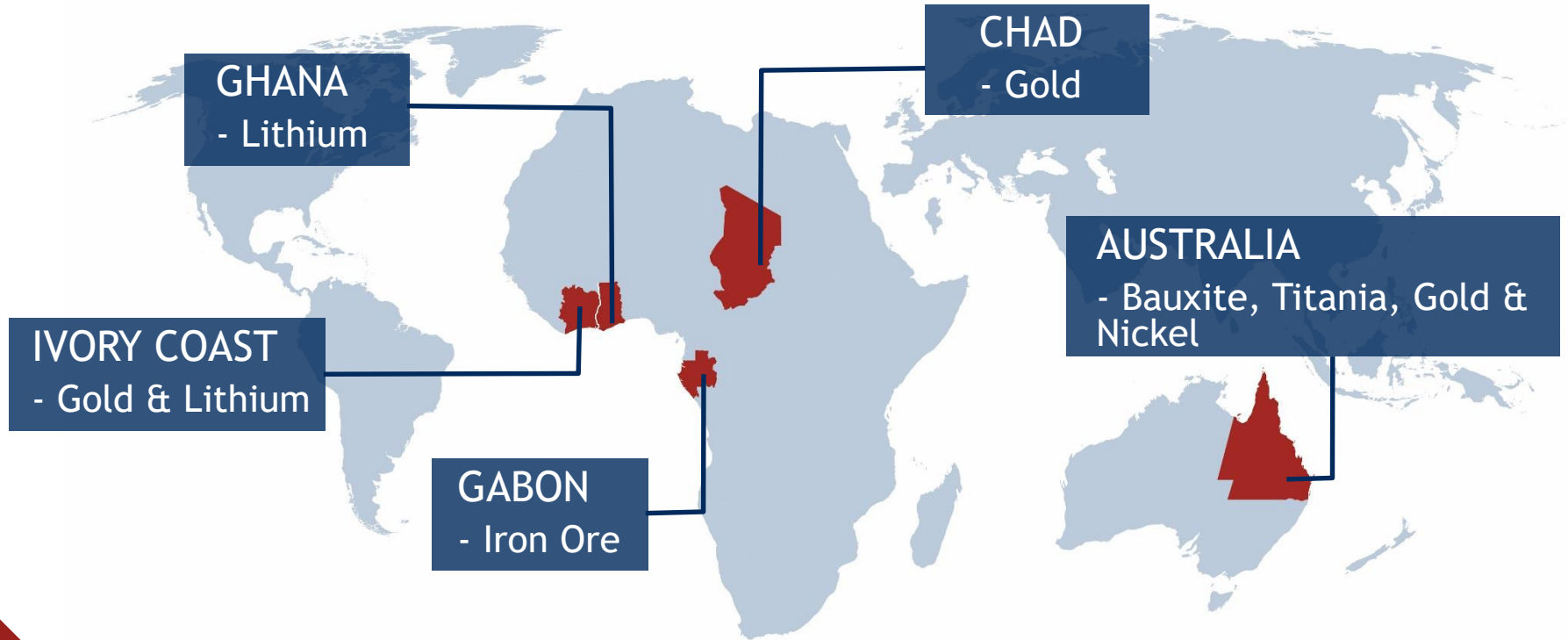
Discovery

Development

Production

Sales

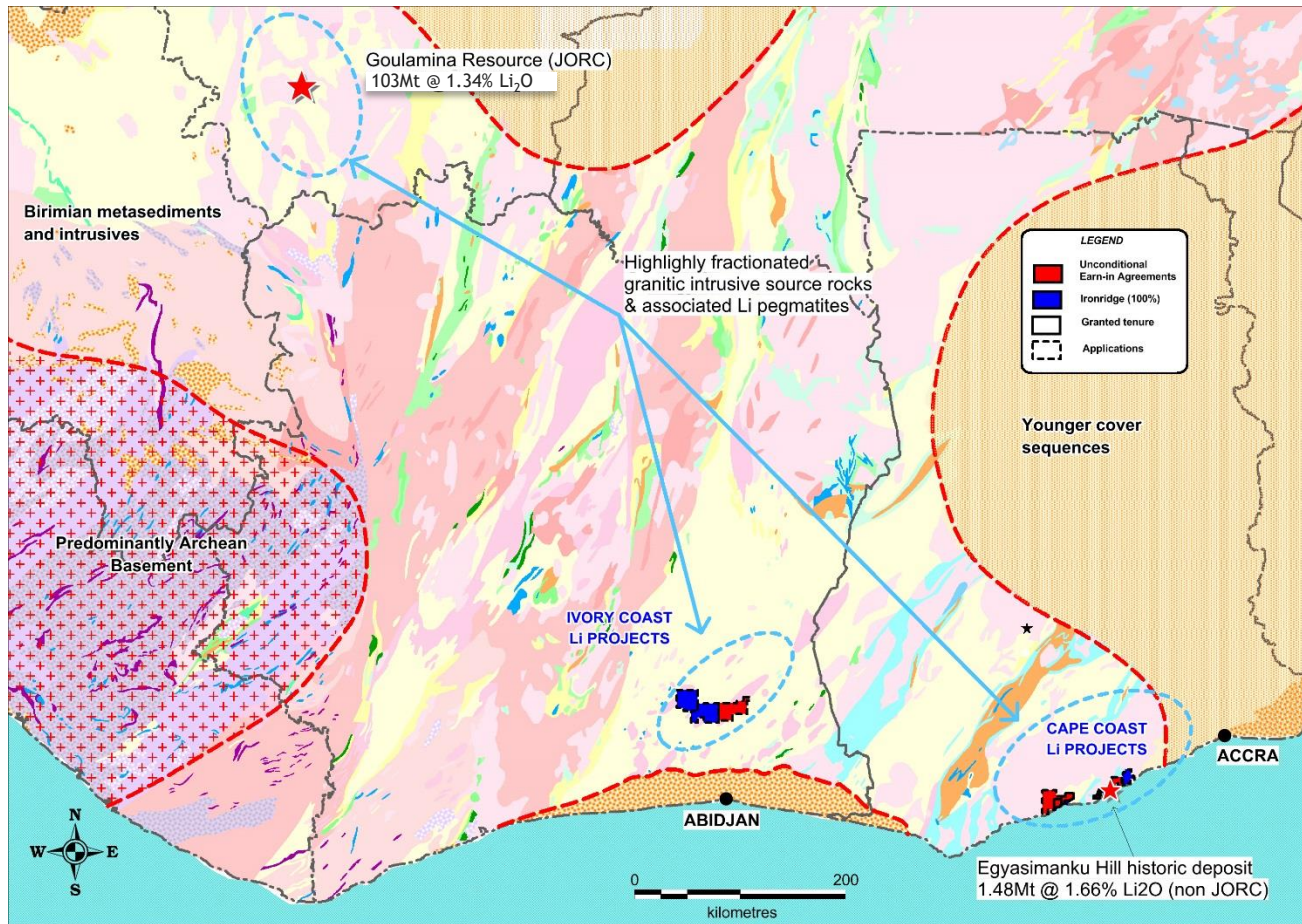
Africa Footprint - Gold & Lithium



Ongoing review of opportunities

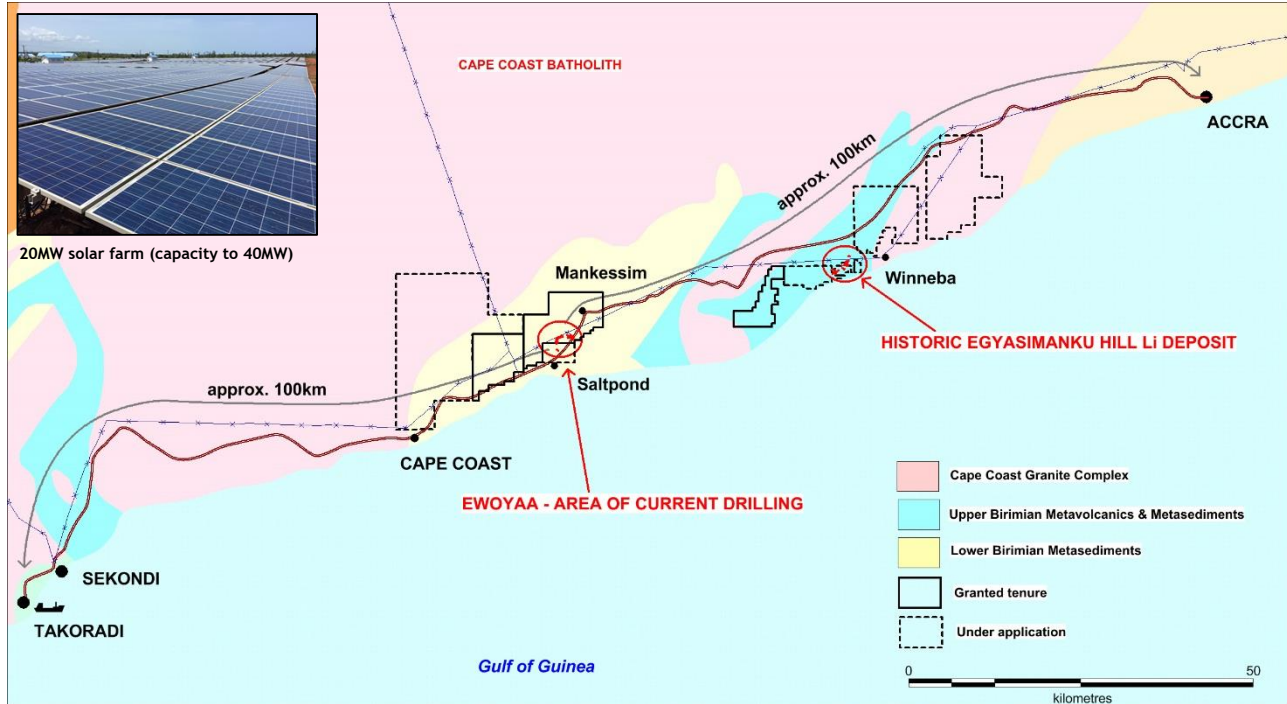
West Africa Lithium Frontier

- › Proven big, high-grade Li spodumene pegmatites
- › Significant globally
- › Historical gold focus in the Birimian, yet highly prospective for Li too
- › 1,822km² portfolio secured in Ghana and Ivory Coast



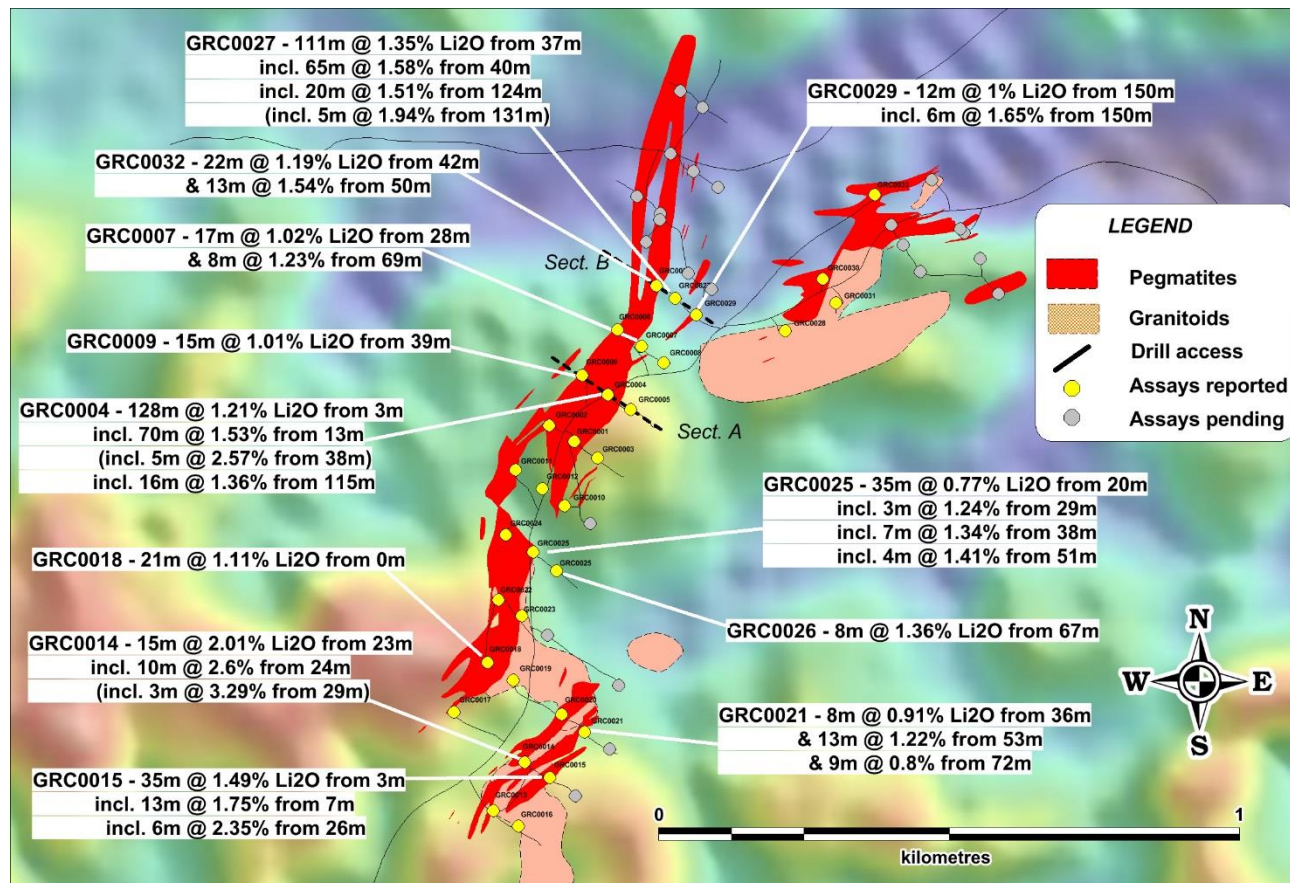
Cape Coast Lithium Project (70%-100%)

- › 645km² land package secured via earn-in & application
- › Within 100km of Takoradi port and 100km of Accra along bitumen highway
- › Historical spodumene deposit 1.48Mt @ 1.66% Li₂O (non JORC)
- › Spodumene dominant pegmatites
- › Additional Be, Nb-Ta, Cs, Sn and Au potential



Ewoyaa Discovery - High-Grade Drilling Results

- > Broad & continuous high-grade drilling results including:
 - > 128m @ 1.21% Li₂O incl.
 - > 70m @ 1.53%
 - > 16m @ 1.36%
 - > 111m @ 1.35% Li₂O incl.
 - > 65m @ 1.58%
 - > 20m @ 1.51%
 - > 35m @ 1.49% Li₂O incl.
 - > 13m @ 1.75%
 - > 6m @ 2.35%



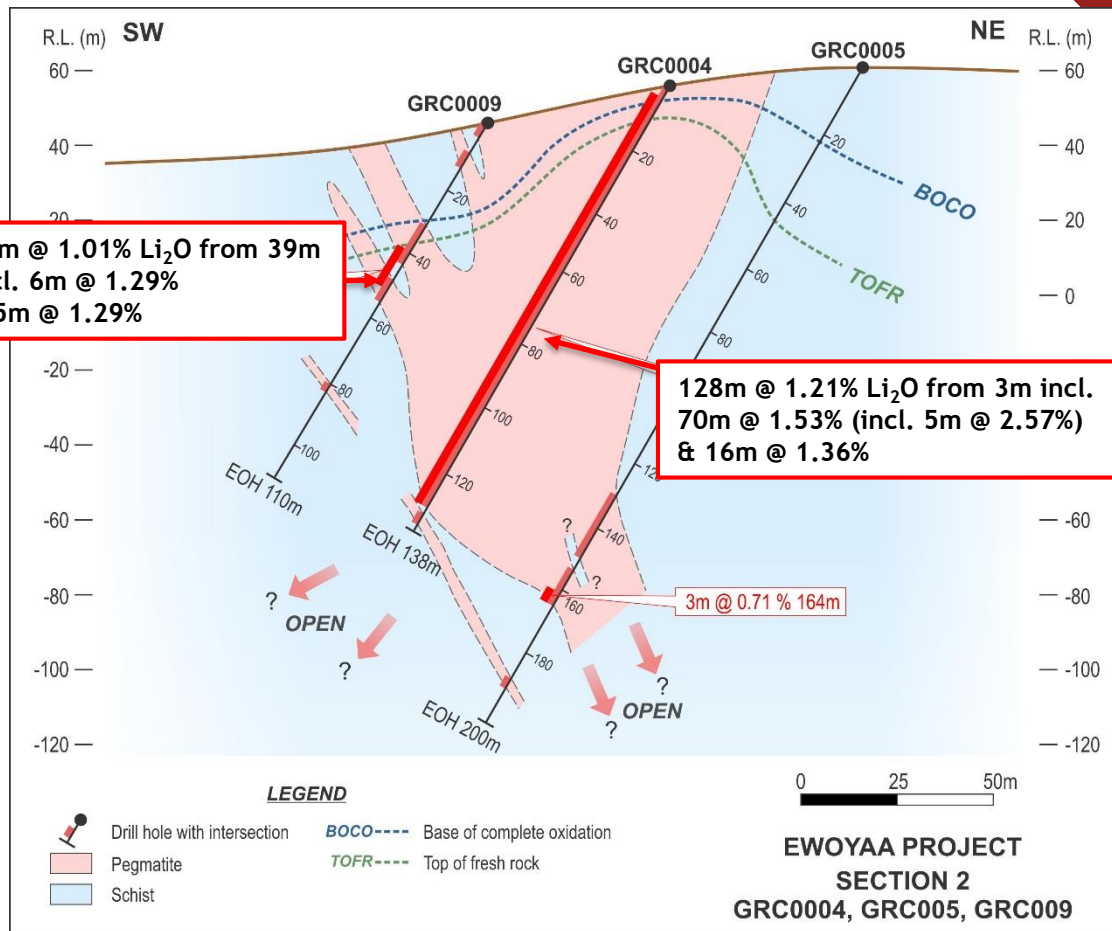
Coarse Spodumene - Broad Widths



**15m @ 1.01% Li₂O from 39m
incl. 6m @ 1.29%
& 5m @ 1.29%**

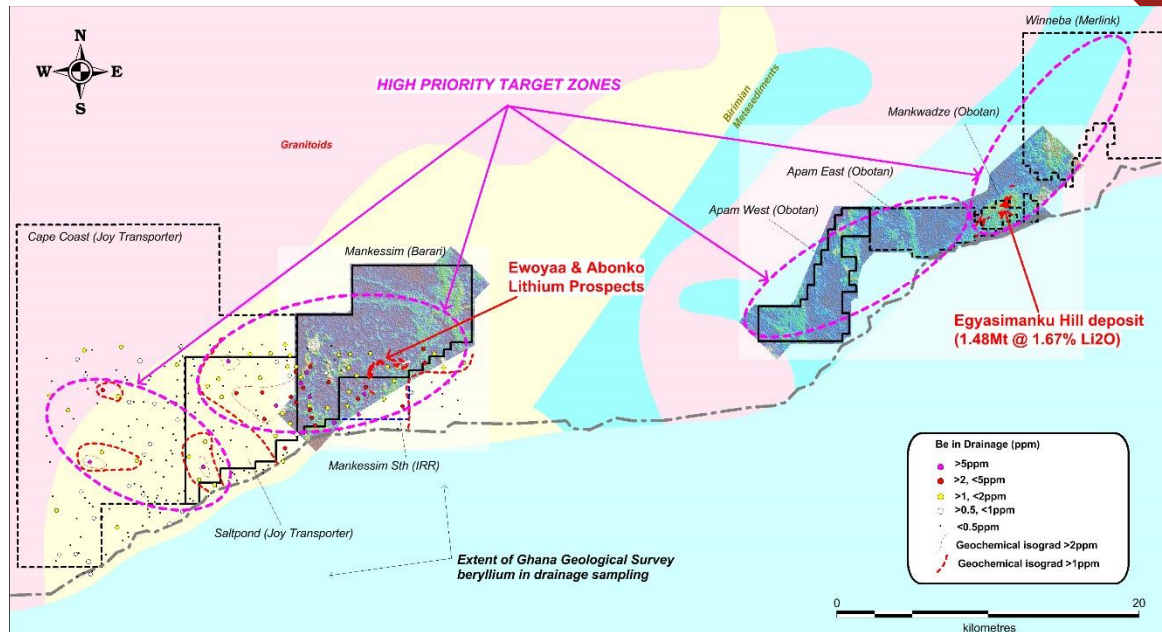
**128m @ 1.21% Li₂O from 3m incl.
70m @ 1.53% (incl. 5m @ 2.57%)
& 16m @ 1.36%**

3m @ 0.71% 164m



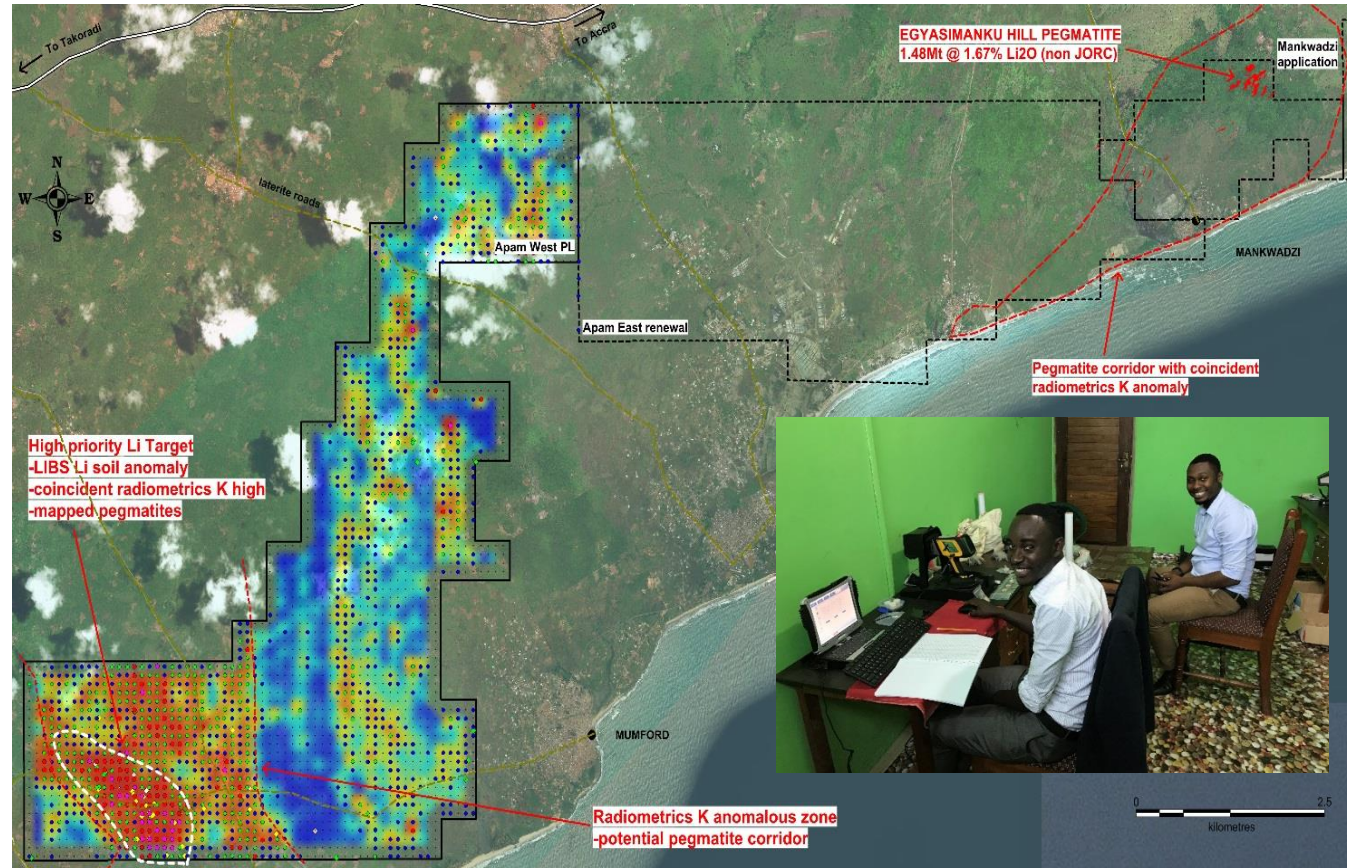
Exploration Upside

- › High-resolution heli rad-mag survey completed
- › Historical Egyasimanku Hill deposit 1.48Mt @ 1.67% Li₂O (non JORC) - significant exploration potential
- › Historical reports of 8 pegmatite bodies at Barari; 350-560ft long, 30-80ft wide & 0.5-2.2% Li₂O
- › Multiple target zones defined

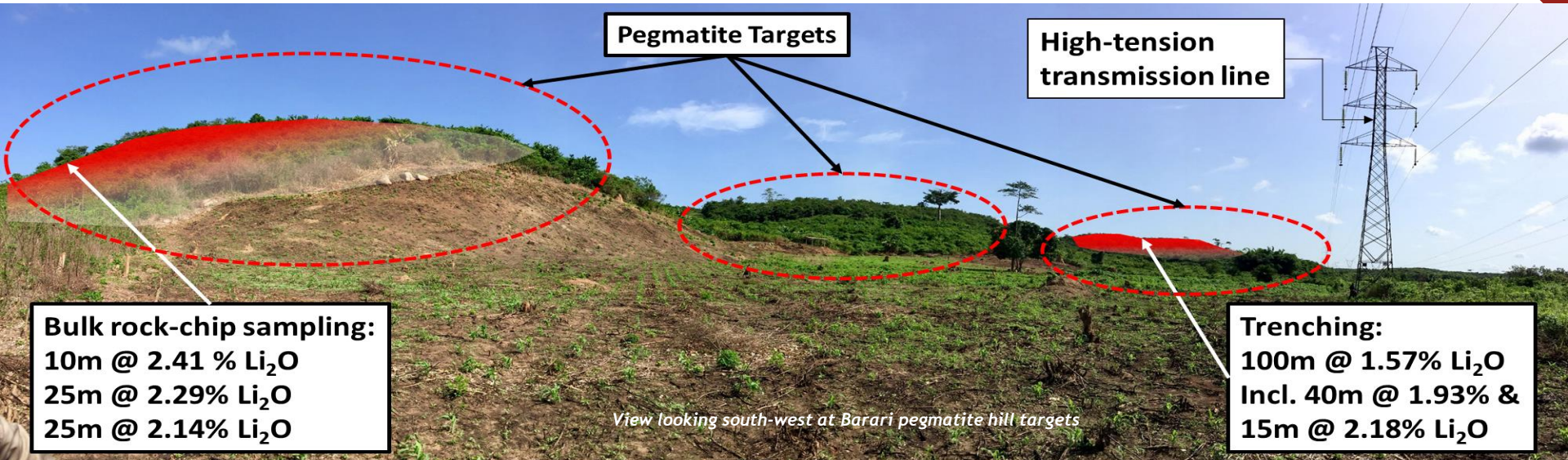


Rapid Regional Exploration Using PRESS & LIBS

- > Over 12,460 soil samples collected to date
- > Dedicated PRESS-LIBS-pXRF lab on site - operational 24/7
- > Lab technicians sourced and trained locally
- > Huge time and cost savings
- > High-priority targets defined



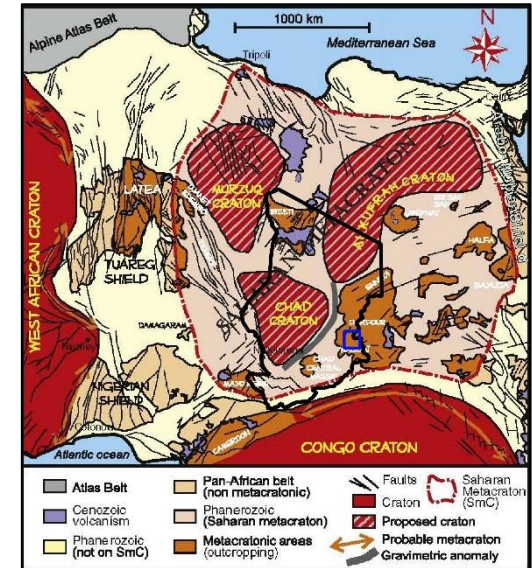
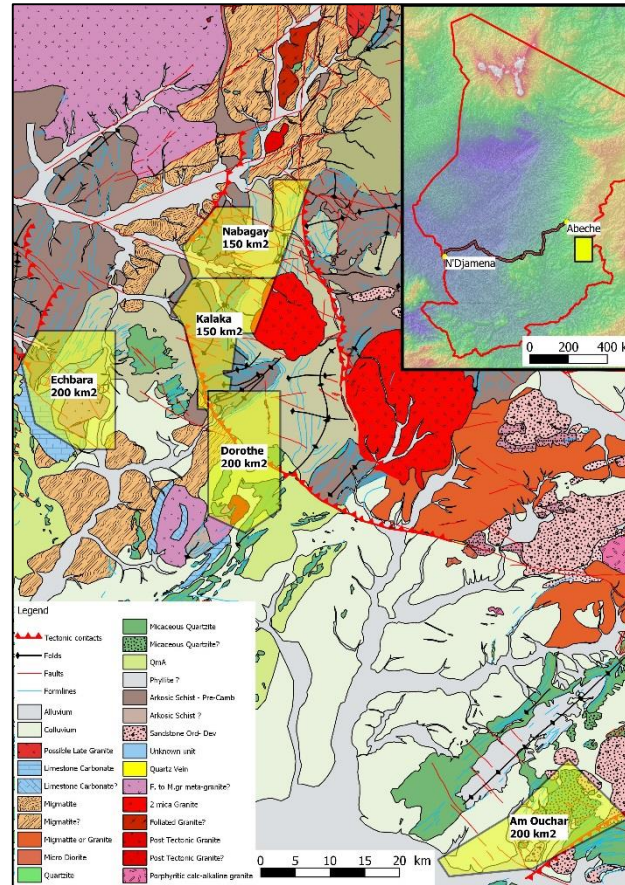
Grade, Scale, Mineralogy, Infrastructure & Jurisdiction



- › High-Grade drilling results, spodumene dominant mineralogy ✓
- › Just one of multiple untested pegmatites in a rediscovered lithium field ✓
- › Favourable infrastructure; 1km from highway, 100km from port, adjacent grid power ✓
- › Low risk, pro-mining jurisdiction ✓

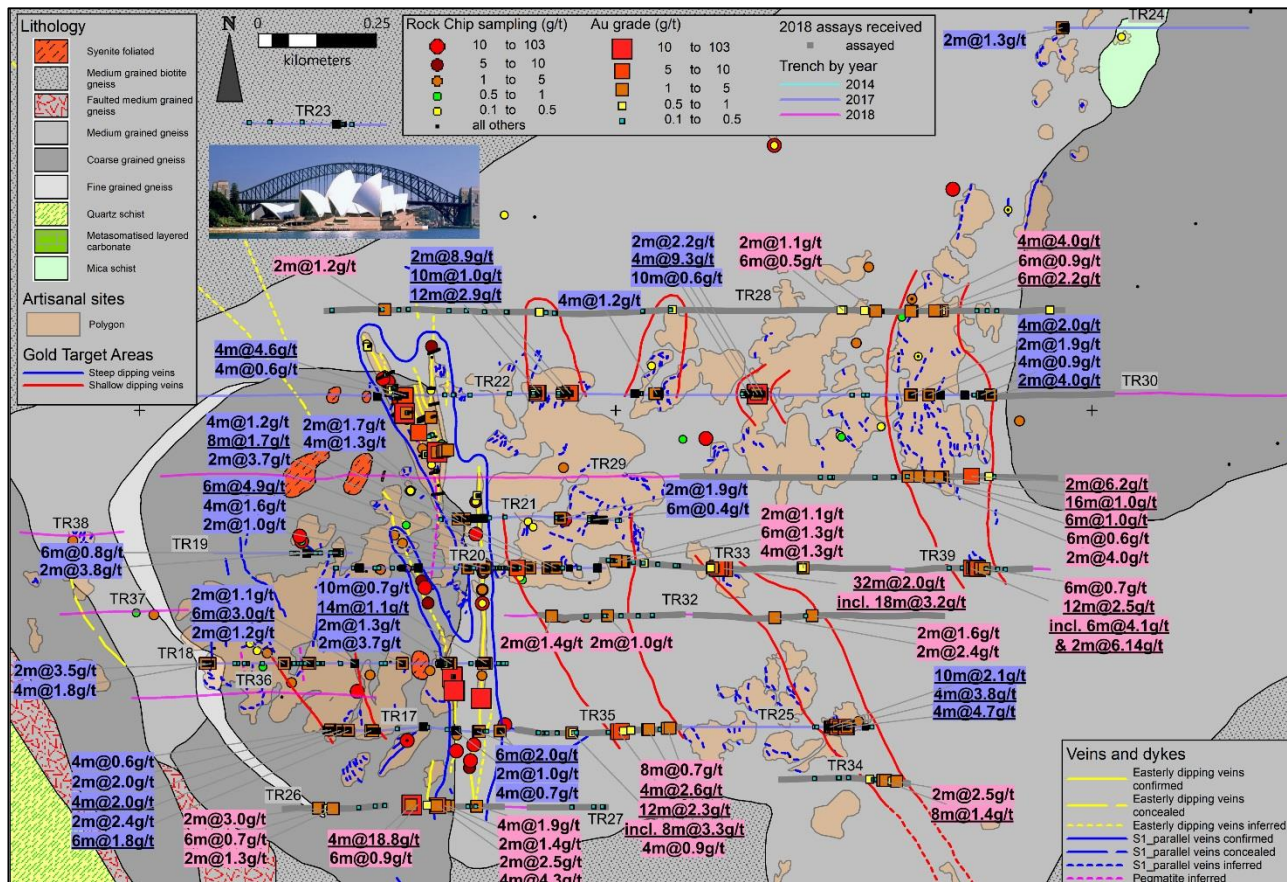
Chad: Large Scale Mineralised Province

- › Licenses covering 900km² in the Saharan Metacraton
- › Potential analogue of Intrusion Related Gold Systems - Globally significant & large scale
- › Little/no modern-day exploration; oil focus
- › First mover advantage; two advanced gold projects
- › Multiple targets with extensive artisanal gold workings



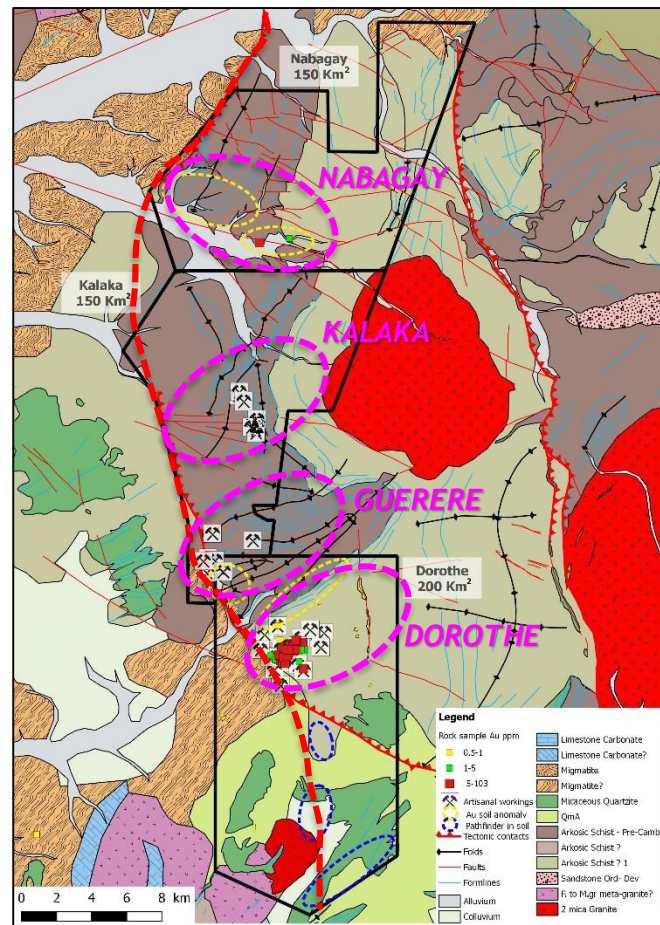
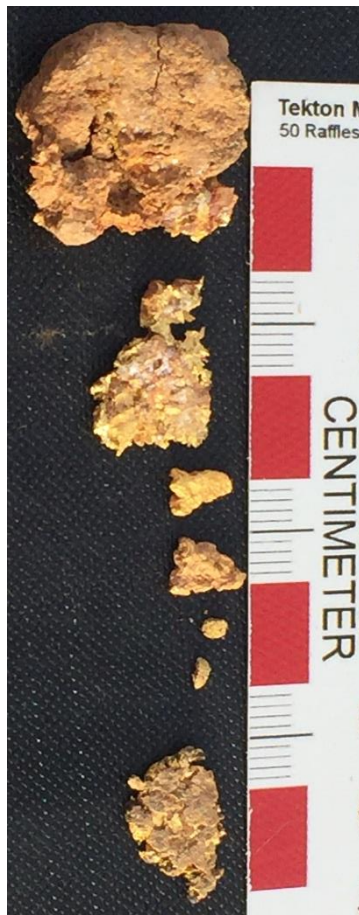
Dorothe: 3km x 1km High-Grade Gold in Trenching Footprint

- > Big mineralised system
 - > Multiple trenching intersections over 3km x 1km area incl:
 - > 32m @ 2.02g/t Au
 - > 4m @ 18.77g/t Au*
 - > 12m @ 2.53g/t Au
 - > 12m @ 2.32g/t Au
 - > Coherent, large scale anomalies defined:
 - > Shallow dipping Sheeted Veins
 - > Sub-vertical Main Vein
- * Logged as transported material from the main vein target



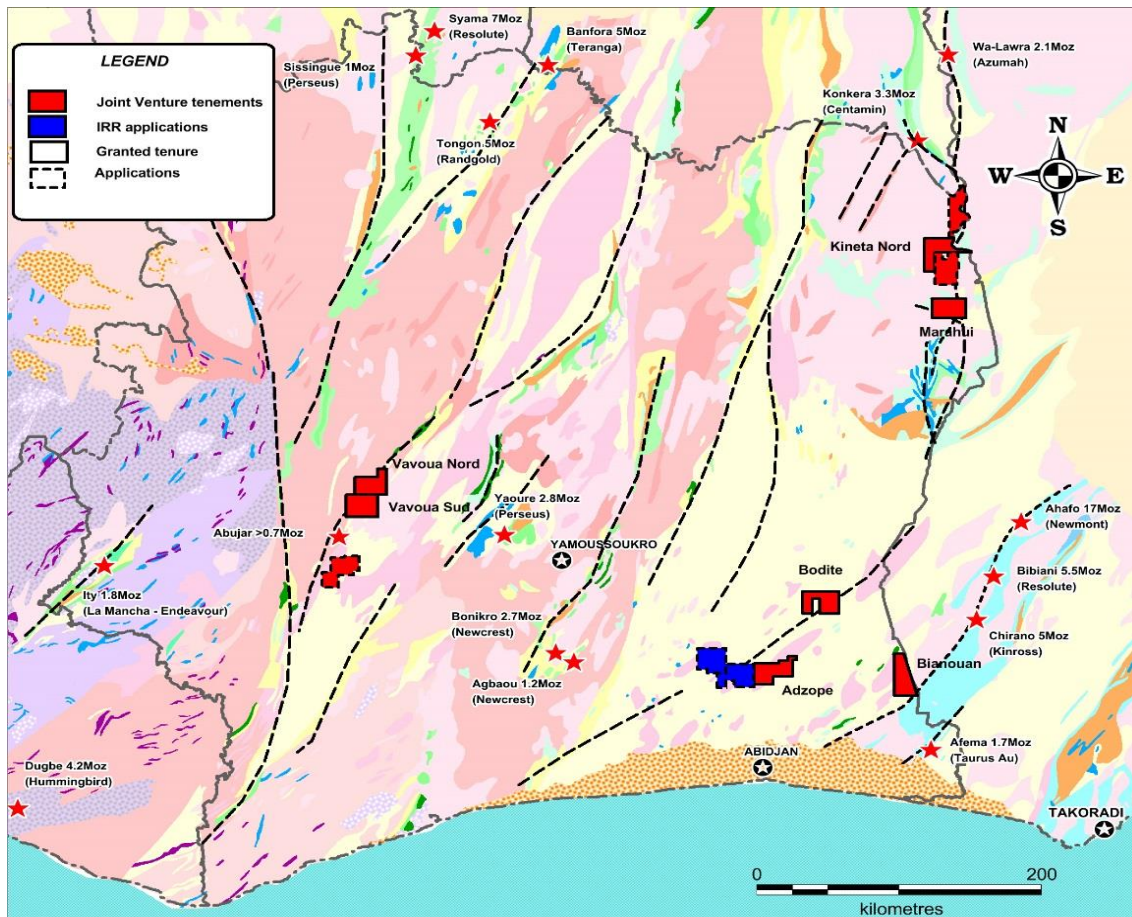
Exploration Upside: One of Multiple Targets Defined

- › Structural repetitions
- › Major, long lived Dorothe Shear
- › Gold targets and artisanal workings defined:
 - › Dorothe target
 - › Kalaka target
 - › Guerere target
 - › Nabagay target
- › Sheeted veins and skarns
- › 40km prospective strike secured



Ivory Coast: Proven Birimian Terrain

- › 3,235km² gold portfolio
- › 1,177km² lithium portfolio
- › Country underlain by prolific Birimian Greenstone Belts
- › Underexplored yet hugely prospective
- › Major regional structures with operating mines; Tongon 5Moz, Yaoure 2.8Moz, Bonikro 2.7Moz



Summary

- › **Ghana - Li Pegmatite Discovery**
 - › High-grade, spodumene dominant
 - › Favourable infrastructure
 - › Pro-mining jurisdiction
- › **Chad - Dorothe Gold Discovery**
 - › Large scale footprint
 - › High-grade trenching
 - › Province scale tenure
- › **Ivory Coast - Proven Birimian Terrain**
 - › Large portfolio
 - › Artisanal workings
- › **Corporate**
 - › Major shareholder support
 - › African experienced team





IronRidge
RESOURCES

Booth 60

IronRidge Resources Ltd
111 Eagle St, Brisbane, QLD Australia
www.ironridgeresources.com.au