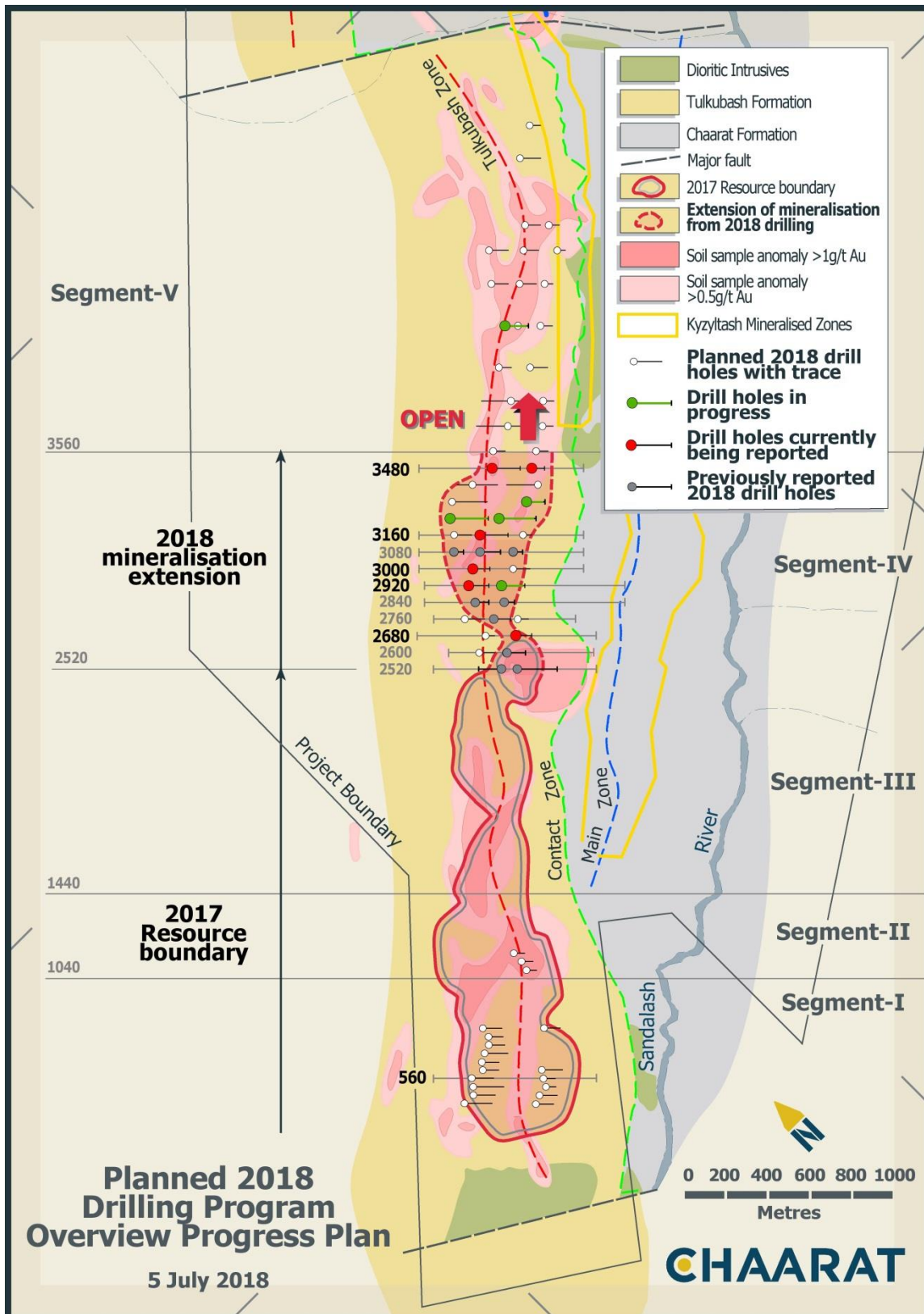
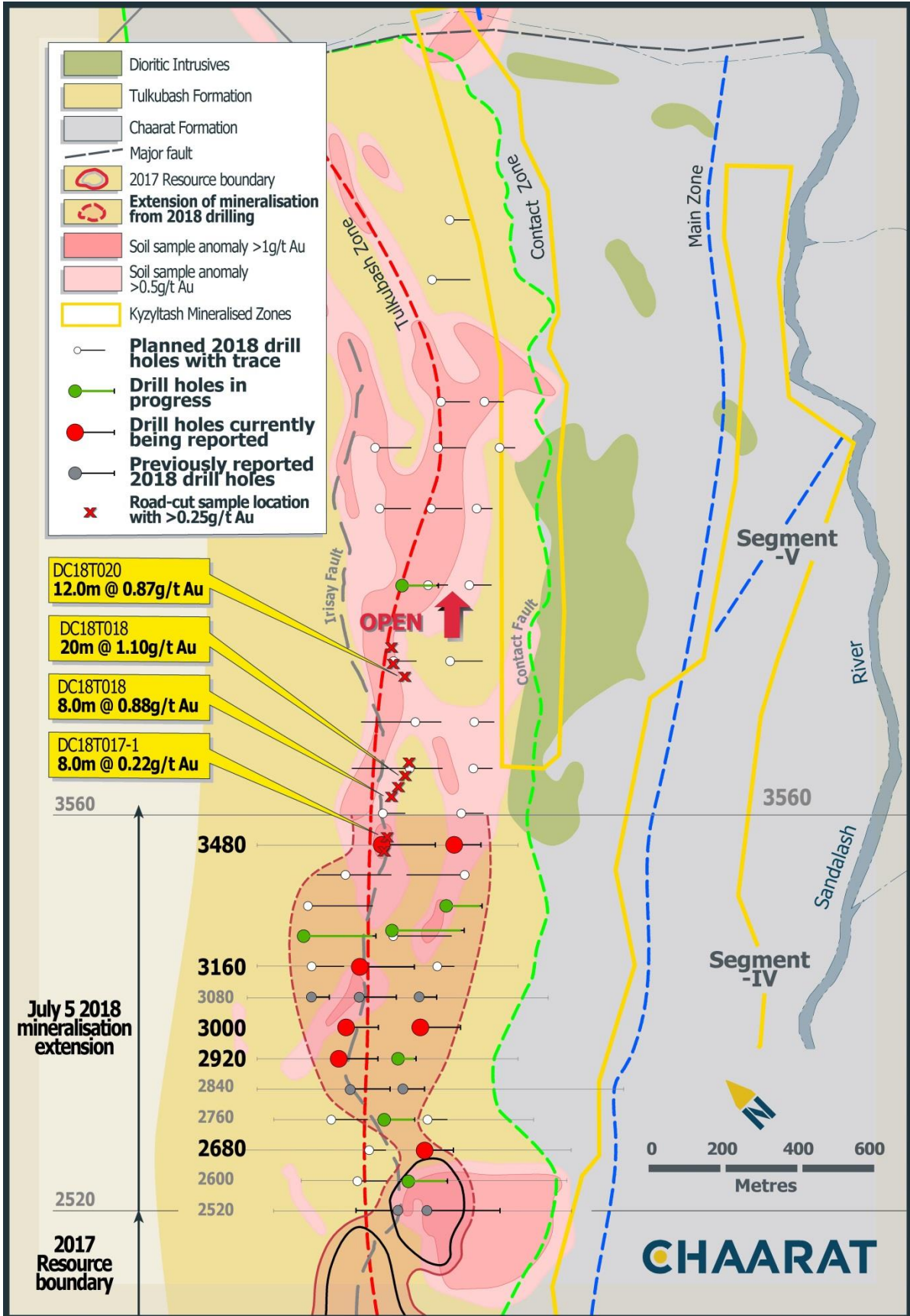
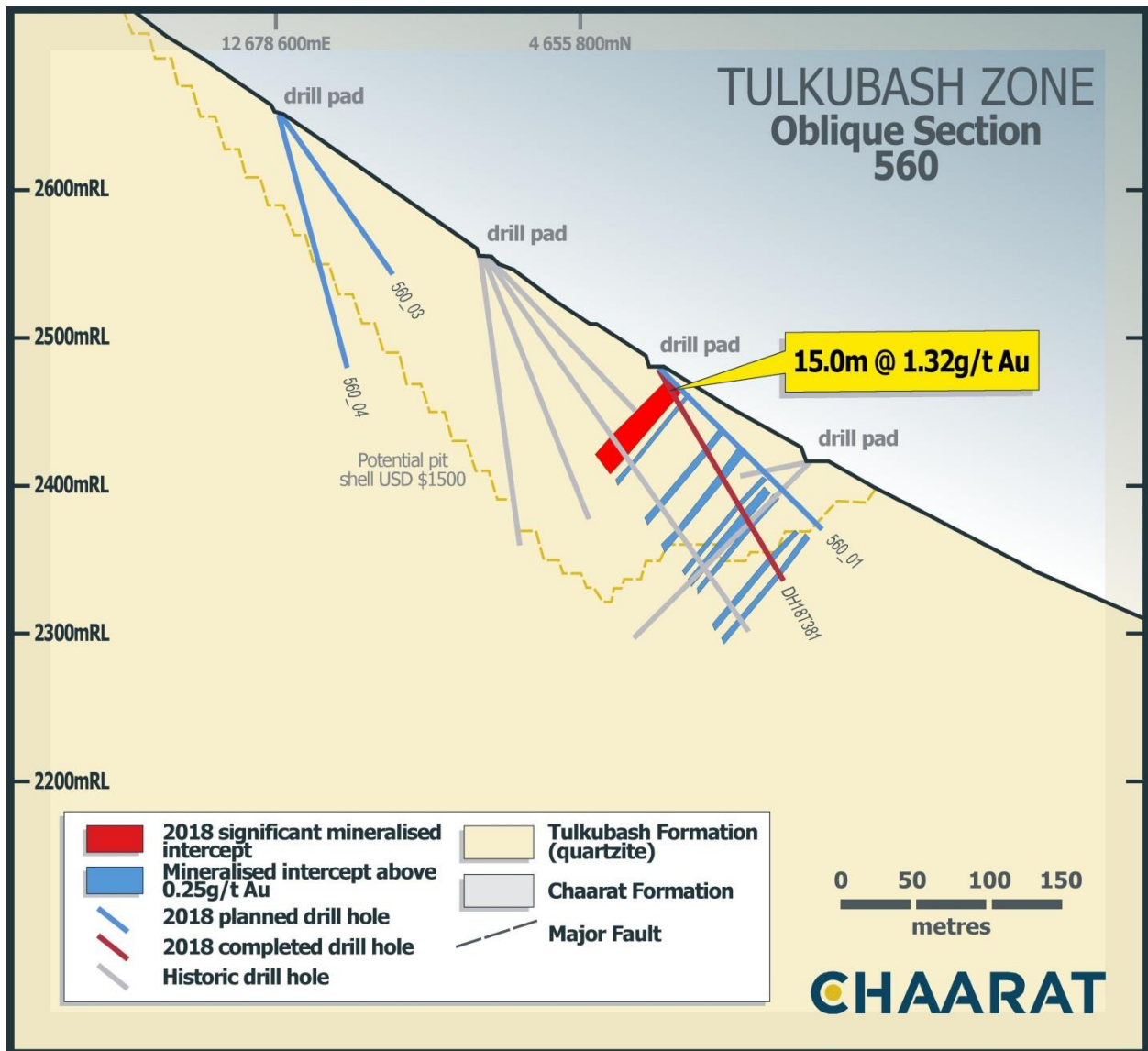


Maps showing Sections Referenced in Press Release:



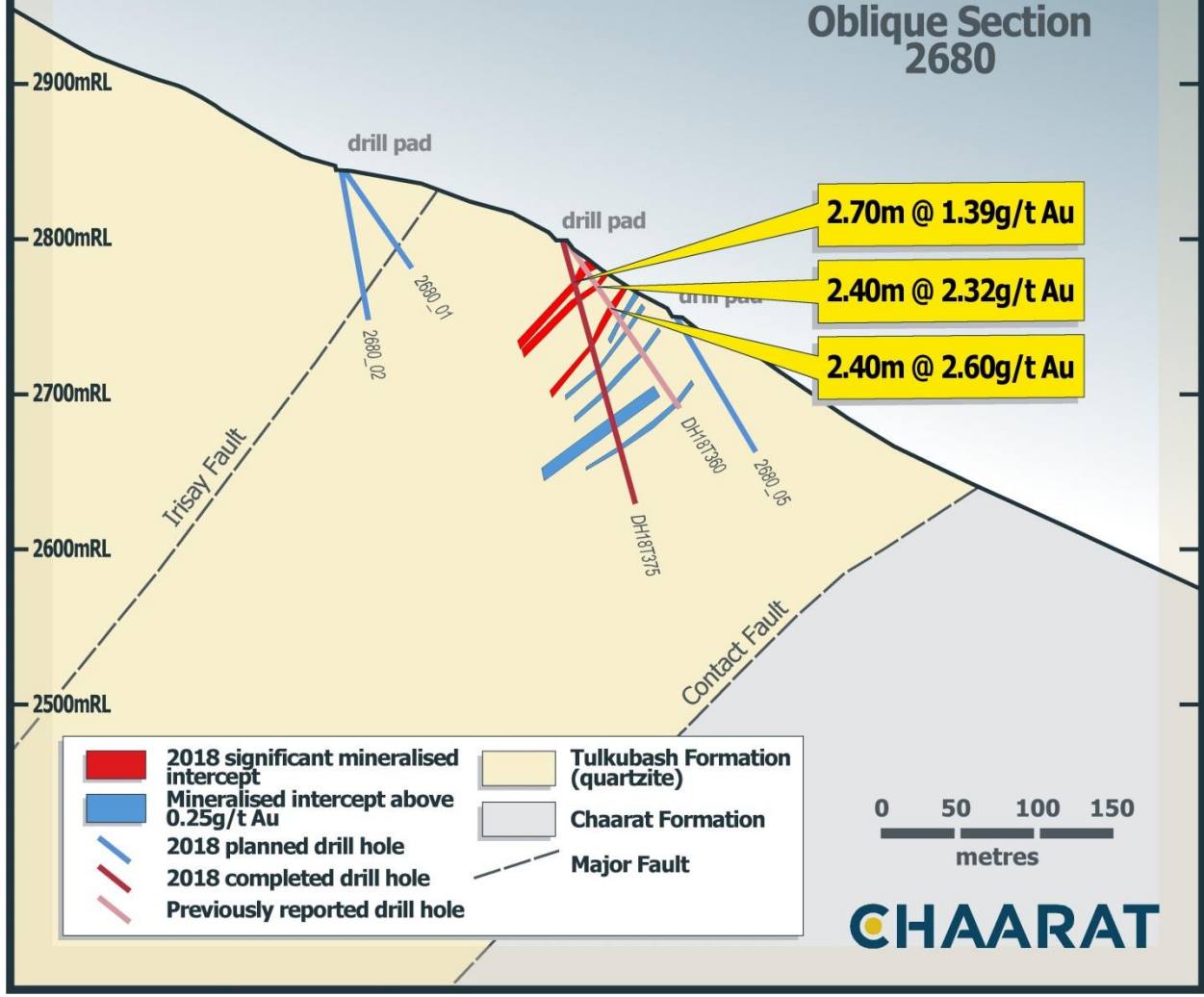


Sections Referenced in Press Release:

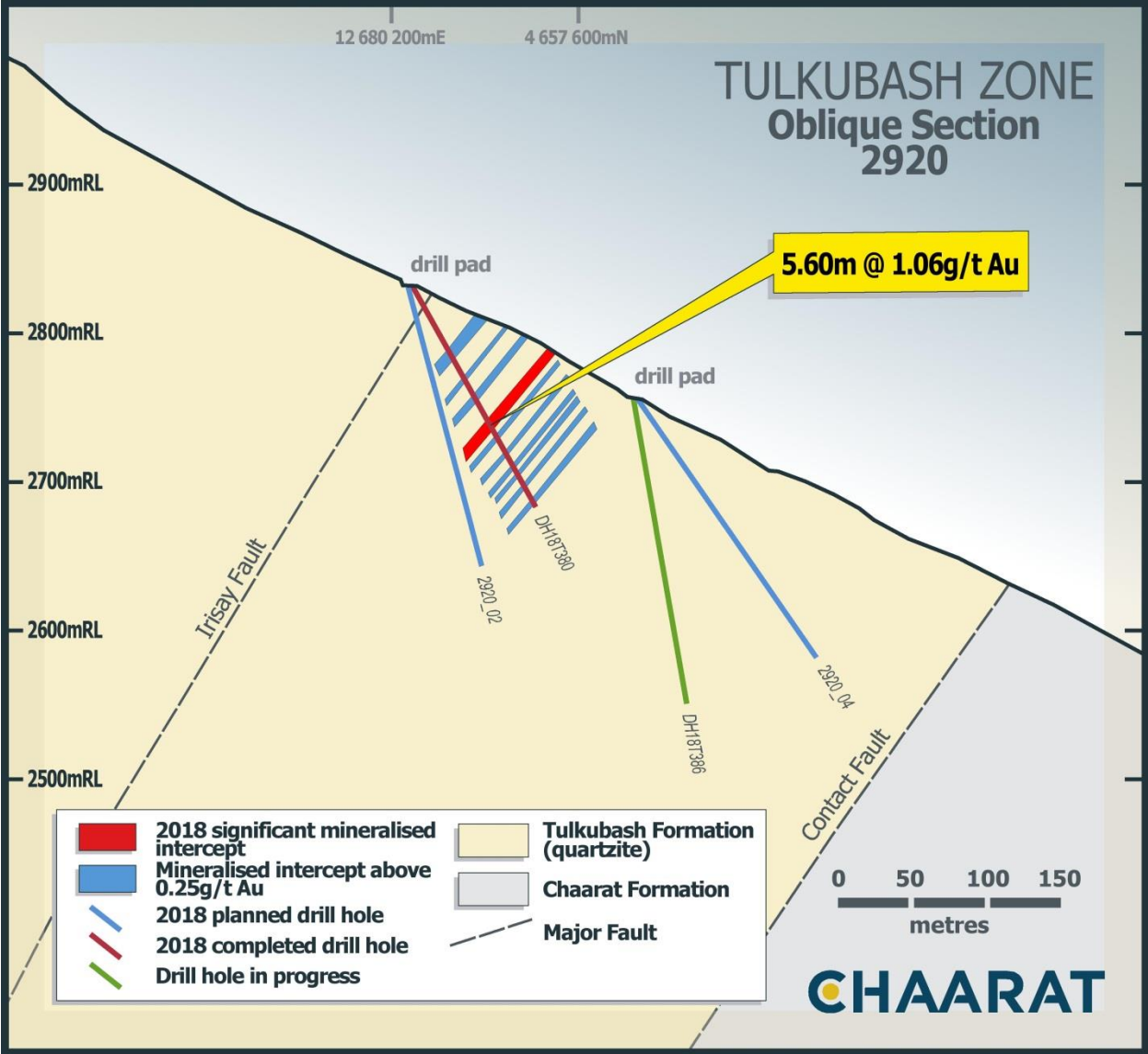


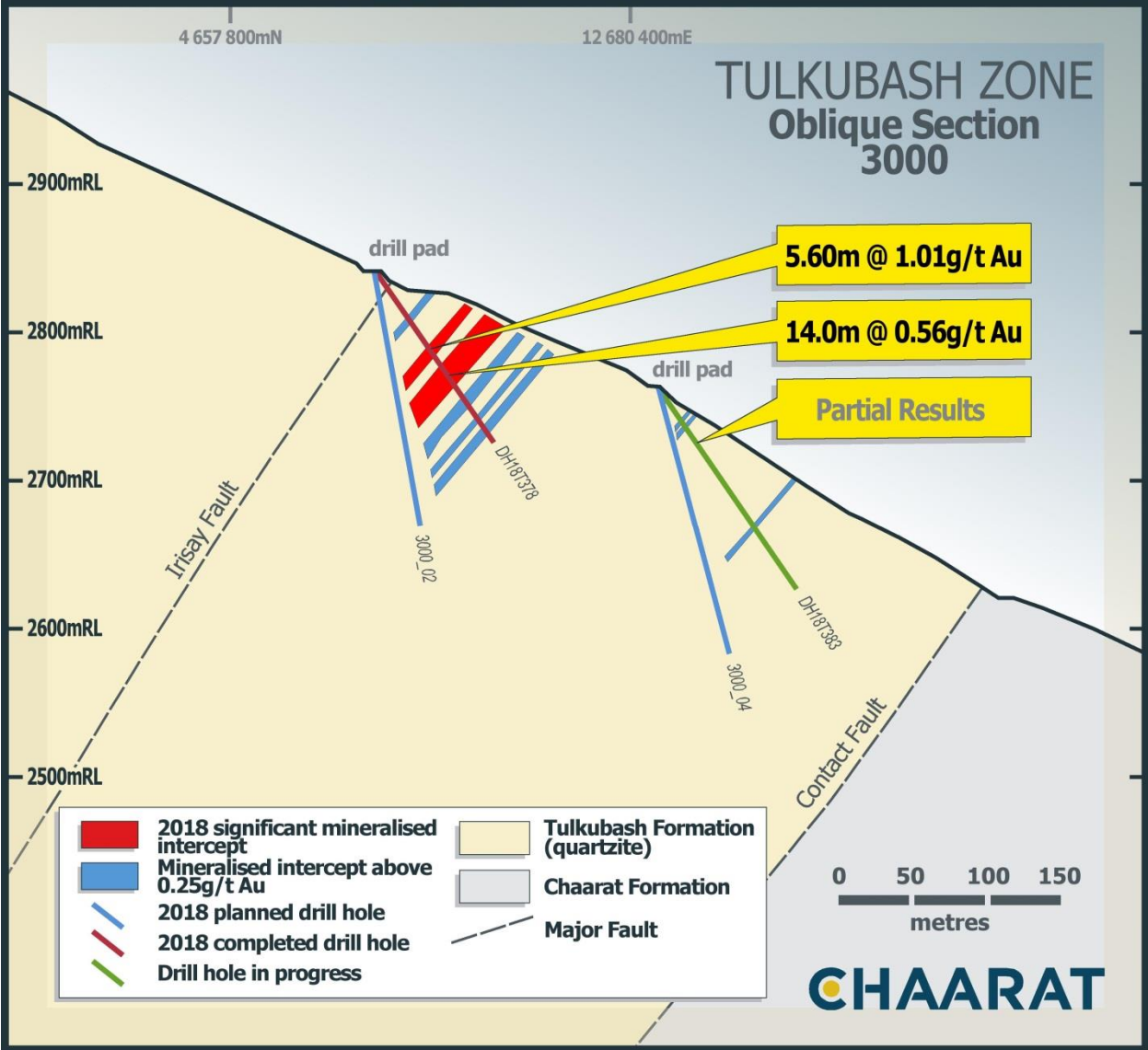
4 657 400mN 12 682 000mE

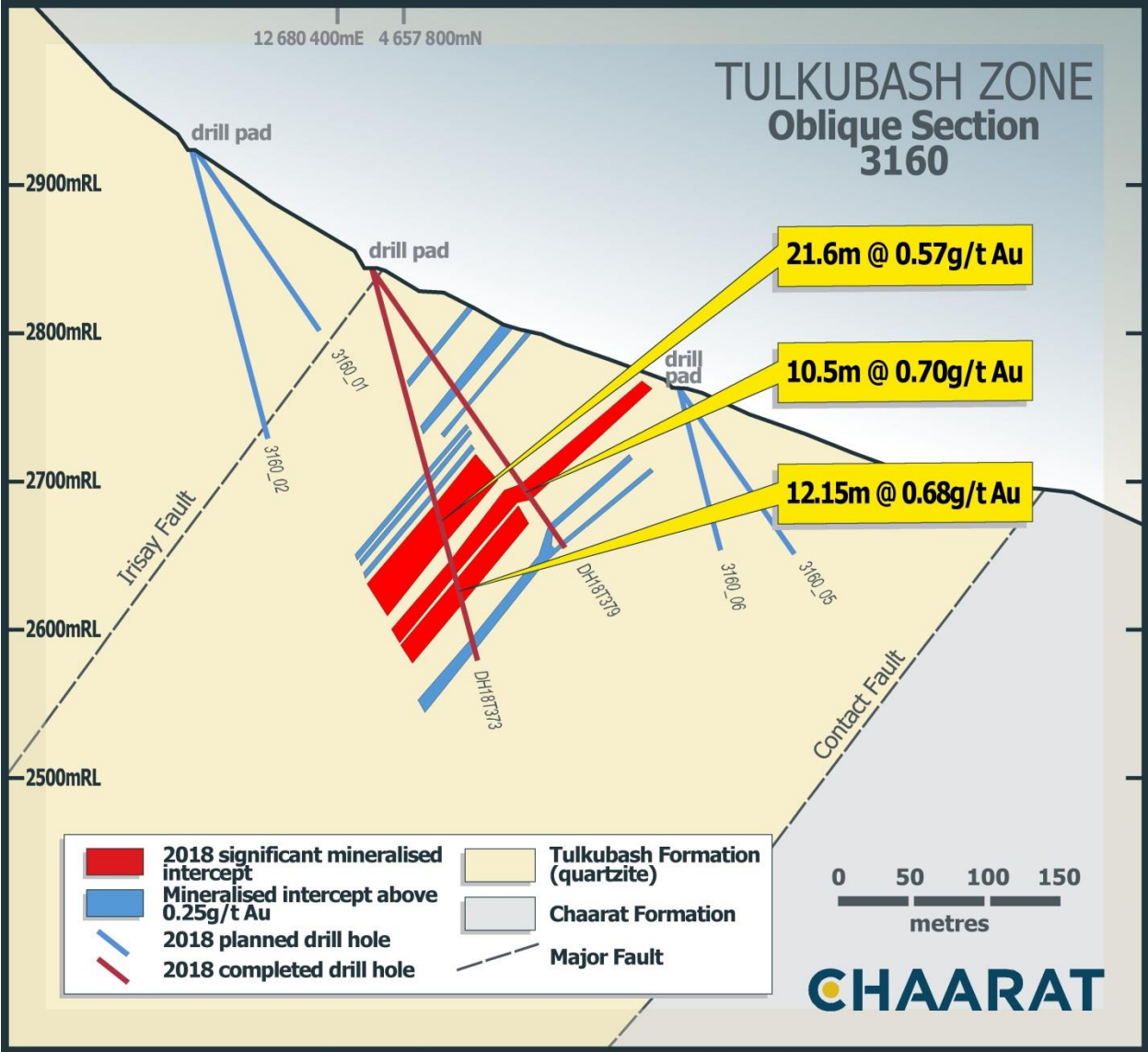
# TULKUBASH ZONE Oblique Section 2680





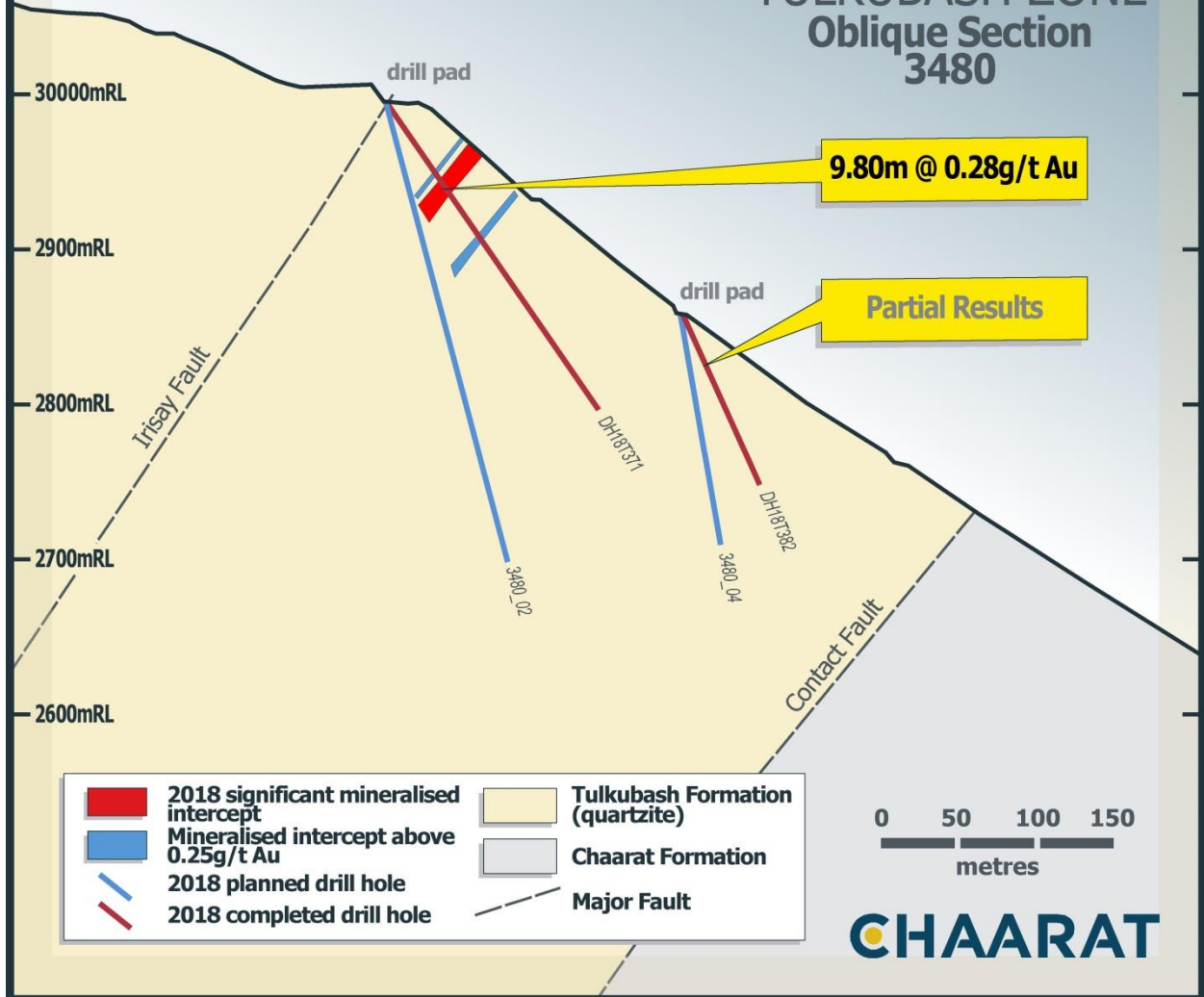






12 680 400mE 4 657 800mN

# TULKUBASH ZONE Oblique Section 3480



9.80m @ 0.28g/t Au

Partial Results

- |  |  |  |                                 |
|--|--|--|---------------------------------|
|  | 2018 significant mineralised intercept |  | Tulkubash Formation (quartzite) |
|  | Mineralised intercept above 0.25g/t Au |  | Chaarat Formation               |
|  | 2018 planned drill hole                |  | Major Fault                     |
|  | 2018 completed drill hole              |  |                                 |

0 50 100 150  
metres

**CHAARAT**



**2018 Drill hole intercepts (>0.25 g/t Au cut-off)**

Drill Hole	Cross Section	Interval		Thickness (m)	True Thickness (m)	Au g/t	Announcement Status	
		From	To					
DH18T381	560	6.00	21.00	15.00	15.00	1.32	This Press Release	
DH18T381	560	27.00	28.50	1.50	1.50	1.00	This Press Release_OI	
DH18T381	560	61.50	64.50	3.00	3.00	0.93	This Press Release_OI	
incl	560	61.50	63.00	1.50	1.50	1.61	This Press Release_OI	
DH18T381	560	81.00	85.50	4.50	4.50	0.42	This Press Release_OI	
DH18T381	560	106.50	108.00	1.50	1.50	1.04	This Press Release_OI	
DH18T381	560	112.50	117.00	4.50	4.50	0.64	This Press Release_OI	
DH18T381	560	121.50	123.00	1.50	1.50	0.25	This Press Release_OI	
DH18T381	560	148.50	150.00	1.50	1.50	0.25	This Press Release_OI	
DH18T381	560	159.00	162.00	3.00	3.00	0.29	This Press Release_OI	
DH18T376	760	6.00	7.50	1.50	1.30	0.77	This Press Release_OI	
DH18T376	760	40.50	46.50	6.00	4.25	0.48	This Press Release_OI	
incl	760	40.50	43.50	3.00	2.60	0.73	This Press Release_OI	
DH18T376	760	51.00	52.50	1.50	1.30	0.37	This Press Release_OI	
DH18T376	760	73.50	76.50	3.00	2.60	0.85	This Press Release_OI	
DH18T376	760	108.00	109.50	1.50	1.30	0.37	This Press Release_OI	
DH18T357	1120	14.50	19.00	4.50	3.80	0.23	This Press Release_OI	
DH18T357	1120	23.50	25.00	1.50	1.20	0.42	This Press Release_OI	
DH18T357	1120	31.00	32.50	1.50	1.20	0.36	This Press Release_OI	
DH18T370	1200	105.00	112.50	7.50	6.30	0.35	This Press Release_OI	
DH18T355	2520	No mineralized intersections						Previously Released_OI
DH18T356BIS	2520	74.00	78.50	4.50	4.40	2.18	Previously Released	
DH18T356BIS	2520	84.50	86.00	1.50	1.40	0.74	Previously Released_OI	
DH18T356BIS	2520	101.00	111.50	10.50	9.80	1.21	Previously Released	
incl	2520	101.00	102.50	1.50	1.40	5.59	Previously Released	
incl	2520	108.50	110.00	1.50	1.40	1.62	Previously Released	

DH18T356BIS	2520	152.00	153.50	1.50	1.40	0.50	Previously Released_OI
DH18T356BIS	2520	171.50	173.00	1.50	1.40	1.05	Previously Released_OI
DH18T356BIS	2520	180.50	182.00	1.50	1.40	0.82	Previously Released_OI
DH18T356BIS	2520	194.00	195.50	1.50	1.40	0.28	Previously Released_OI
DH18T358	2520	9.00	15.00	6.00	5.60	0.20	This Press Release_OI
DH18T358BIS	2520	27.00	28.50	1.50	1.40	0.39	Previously Released_OI
DH18T363	2520	3.00	10.50	7.50	7.00	0.30	Previously Released_OI
DH18T363	2520	12.00	13.50	1.50	1.40	0.24	Previously Released_OI
DH18T363	2520	24.00	25.50	1.50	1.40	0.26	Previously Released_OI
DH18T363	2520	40.50	42.00	1.50	1.40	0.60	Previously Released_OI
DH18T363	2520	84.00	87.00	3.00	2.80	0.43	Previously Released_OI
DH18T363	2520	111.00	112.50	1.50	1.40	0.26	Previously Released_OI
DH18T359	2600	85.50	87.00	1.50	1.30	0.90	Previously Released_OI
DH18T359	2600	102.00	103.50	1.50	1.30	0.34	Previously Released_OI
DH18T359	2600	106.50	121.50	15.00	13.00	0.61	Previously Released
incl	2600	114.00	115.50	1.50	1.30	1.71	Previously Released
incl	2600	118.50	121.50	3.00	2.60	1.67	Previously Released
incl	2600	118.50	120.00	1.50	1.30	3.06	Previously Released
DH18T359	2600	127.50	135.00	7.50	6.50	0.32	Previously Released_OI
DH18T359	2600	162.00	165.00	3.00	2.60	0.34	Previously Released_OI
DH18T374	2600	12.00	15.00	3.00	1.70	0.54	This Press Release_OI
DH18T374	2600	21.00	22.50	1.50	1.35	0.26	This Press Release_OI
DH18T374	2600	27.00	28.50	1.50	1.35	0.46	This Press Release_OI
DH18T374	2600	36.00	37.50	1.50	1.35	0.79	This Press Release_OI
DH18T374	2600	51.00	52.50	1.50	1.35	0.41	This Press Release_OI
DH18T374	2600	82.50	84.00	1.50	1.40	0.34	This Press Release_OI
DH18T374	2600	97.50	100.50	3.00	2.80	0.38	This Press Release_OI
DH18T374	2600	114.00	115.90	1.90	1.75	0.37	This Press Release_OI
DH18T360	2680	19.50	24.00	4.50	3.80	0.78	Previously Released_OI
DH18T360	2680	33.00	36.00	3.00	2.40	1.60	Previously Released

incl	2680	34.50	36.00	1.50	1.20	3.08	Previously Released
DH18T360	2680	51.00	54.00	3.00	2.40	2.32	Previously Released
incl	2680	51.00	52.50	1.50	1.20	4.13	Previously Released
DH18T360	2680	61.50	63.00	1.50	1.20	0.70	Previously Released_OI
DH18T360	2680	69.00	72.00	3.00	2.40	2.20	Previously Released
incl	2680	69.00	70.50	1.50	1.50	4.34	Previously Released
DH18T360	2680	87.00	88.50	1.50	1.50	0.74	Previously Released_OI
DH18T360	2680	126.00	129.00	3.00	3.00	0.59	Previously Released_OI
DH18T375	2680	25.50	28.50	3.00	2.70	1.39	This Press Release
DH18T375	2680	36.00	37.50	1.50	1.35	0.65	This Press Release_OI
DH18T375	2680	67.50	69.00	1.50	1.35	0.38	This Press Release_OI
DH18T375	2680	82.50	84.00	1.50	1.35	0.34	This Press Release_OI
DH18T375	2680	100.50	102.00	1.50	1.35	2.31	This Press Release_OI
DH18T375	2680	117.00	124.50	7.50	6.75	0.34	This Press Release_OI
DH18T375	2680	136.50	138.00	1.50	1.35	0.30	This Press Release_OI
DH18T361	2760	16.50	18.00	1.50	1.10	1.68	Previously Released_OI
DH18T361	2760	30.00	36.00	6.00	5.20	0.44	Previously Released_OI
DH18T362	2760	1.50	3.00	1.50	1.10	0.20	Previously Released_OI
DH18T362	2760	12.00	18.00	6.00	5.30	0.52	Previously Released_OI
DH18T362	2760	61.50	63.00	1.50	1.30	0.31	Previously Released_OI
DH18T362	2760	112.50	114.00	1.50	1.30	0.51	Previously Released_OI
DH18T387	2760	10.50	12.00	1.50	1.40	0.32	This Press Release_OI
DH18T387	2760	16.50	18.00	1.50	1.40	0.69	This Press Release_OI
DH18T387	2760	24.00	27.00	3.00	2.80	0.50	This Press Release_OI
DH18T366	2840	21.50	27.50	6.00	5.40	4.87	Previously Released
incl	2840	23.00	24.50	1.50	1.35	14.30	Previously Released
DH18T366	2840	39.50	45.50	6.00	5.40	0.33	Previously Released_OI
DH18T366	2840	51.50	57.50	6.00	5.40	0.94	Previously Released_OI
incl	2840	53.00	54.50	1.50	1.35	2.60	Previously Released_OI
DH18T366	2840	63.50	65.00	1.50	1.35	1.10	Previously Released_OI

DH18T366	2840	84.50	89.00	4.50	4.05	0.40	Previously Released_OI
DH18T366	2840	98.00	120.50	22.50	19.50	0.42	Previously Released
DH18T366	2840	129.50	131.00	1.50	1.35	0.94	This Press Release_OI
DH18T366	2840	135.50	137.00	1.50	1.35	0.52	This Press Release_OI
DH18T366	2840	162.50	168.50	6.00	5.40	0.27	This Press Release_OI
DH18T366	2840	201.50	203.00	1.50	1.35	0.28	This Press Release_OI
DH18T366	2840	213.50	218.00	4.50	4.04	0.36	This Press Release_OI
DH18T366	2840	222.50	224.00	1.50	1.35	0.61	This Press Release_OI
DH18T368	2840	18.00	19.50	1.50	1.40	0.43	This Press Release_OI
DH18T368	2840	171.00	172.50	1.50	1.40	0.30	This Press Release_OI
DH18T368	2840	180.00	181.50	1.50	1.40	0.56	This Press Release_OI
DH18T377	2840	40.50	42.00	1.50	1.50	1.11	This Press Release_OI
DH18T377	2840	49.50	58.50	9.00	9.00	0.43	This Press Release_OI
incl	2840	57.00	58.50	1.50	1.50	1.11	This Press Release_OI
DH18T377	2840	85.50	88.50	3.00	3.00	0.83	This Press Release_OI
DH18T377	2840	139.50	141.00	1.50	1.50	0.97	This Press Release_OI
DH18T380	2920	54.00	61.50	7.50	7.00	0.54	This Press Release_OI
DH18T380	2920	76.50	78.00	1.50	1.40	0.42	This Press Release_OI
DH18T380	2920	90.00	93.00	3.00	2.80	0.74	This Press Release_OI
DH18T380	2920	109.50	115.50	6.00	5.60	1.06	This Press Release
incl	2920	112.50	115.50	3.00	2.80	1.46	This Press Release
DH18T380	2920	120.00	121.50	1.50	1.40	0.30	This Press Release_OI
DH18T380	2920	133.50	135.00	1.50	1.40	1.30	This Press Release_OI
DH18T380	2920	144.00	145.50	1.50	1.40	0.26	This Press Release_OI
DH18T380	2920	150.00	151.50	1.50	1.40	0.58	This Press Release_OI
DH18T380	2920	159.00	160.50	1.50	1.40	0.33	This Press Release_OI
DH18T380	2920	171.00	172.50	1.50	1.40	0.27	This Press Release_OI
DH18T378	3000	38.00	41.00	3.00	2.80	0.26	This Press Release_OI
DH18T378	3000	62.00	68.00	6.00	6.00	1.01	This Press Release
incl	3000	62.00	63.50	1.50	1.50	2.03	This Press Release



DH18T378	3000	77.00	92.00	15.00	15.00	0.56	This Press Release
incl	3000	77.00	78.50	1.50	1.50	1.11	This Press Release
incl	3000	90.50	92.00	1.50	1.50	1.97	This Press Release
DH18T378	3000	104.00	110.00	6.00	6.00	0.74	This Press Release_OI
DH18T378	3000	120.50	122.00	1.50	1.50	0.83	This Press Release_OI
DH18T378	3000	128.00	132.50	4.50	4.50	0.83	This Press Release_OI
incl	3000	128.00	129.50	1.50	1.50	1.86	This Press Release_OI
DH18T383	3000	25.50	27.00	1.50	1.40	0.25	This Press Release_OI
DH18T383	3000	30.00	31.50	1.50	1.40	0.44	This Press Release_OI
DH18T383	3000	112.50	114.00	1.50	1.40	3.65	This Press Release_OI
DH18T365	3080	151.50	156.00	4.50	4.25	0.75	Previously Released_OI
incl	3080	151.50	153.00	1.50	1.40	1.31	Previously Released_OI
DH18T365	3080	171.00	175.50	4.50	4.25	0.42	Previously Released_OI
DH18T369	3080	1.50	3.00	1.50	1.30	0.54	Previously Released_OI
DH18T369	3080	7.50	16.50	9.00	7.80	0.34	Previously Released_OI
DH18T369	3080	30.00	51.00	21.00	18.20	0.55	Previously Released
incl	3080	33.00	36.00	3.00	2.60	1.20	Previously Released
incl	3080	39.00	42.00	3.00	2.60	1.07	Previously Released
incl	3080	43.50	45.00	1.50	1.30	1.04	Previously Released
DH18T369	3080	58.50	60.00	1.50	1.30	1.58	Previously Released_OI
DH18T369	3080	73.50	75.00	1.50	1.30	0.77	Previously Released_OI
DH18T369	3080	79.50	94.50	15.00	13.00	0.70	Previously Released
incl	3080	79.50	81.00	1.50	1.30	2.17	Previously Released
incl	3080	93.00	94.50	1.50	1.30	1.13	Previously Released
DH18T369	3080	159.00	160.50	1.50	1.30	0.32	This Press Release_OI
DH18T364	3080	0.00	7.50	7.50	6.50	0.35	Previously Released_OI
DH18T364	3080	25.50	34.50	9.00	7.80	0.28	Previously Released_OI
DH18T364	3080	39.00	45.00	6.00	5.20	1.94	Previously Released
incl	3080	40.50	43.50	3.00	2.60	3.32	Previously Released
DH18T364	3080	51.00	52.50	1.50	1.30	0.45	Previously Released_OI

DH18T364	3080	66.00	67.50	1.50	1.30	1.23	Previously Released_OI
DH18T364	3080	73.50	75.00	1.50	1.30	0.26	Previously Released_OI
DH18T364	3080	78.00	79.50	1.50	1.30	2.77	Previously Released_OI
DH18T364	3080	84.00	85.50	1.50	1.30	0.61	Previously Released_OI
DH18T364	3080	99.00	102.00	3.00	2.60	0.35	Previously Released_OI
DH18T364	3080	109.50	121.50	12.00	10.40	1.71	Previously Released
incl	3080	112.50	117.00	4.50	3.90	3.82	Previously Released
incl	3080	114.00	115.50	1.50	1.30	6.61	Previously Released
DH18T367	3080	18.50	20.00	1.50	1.25	0.31	Previously Released_OI
DH18T367	3080	62.00	63.50	1.50	1.25	0.73	Previously Released_OI
DH18T367	3080	77.00	80.00	3.00	2.50	0.73	Previously Released_OI
incl	3080	77.00	78.50	1.50	1.25	1.23	Previously Released_OI
DH18T367	3080	107.00	108.50	1.50	1.25	0.30	Previously Released_OI
DH18T367	3080	116.00	119.00	3.00	2.50	1.10	Previously Released
DH18T367	3080	158.00	164.00	6.00	4.00	0.79	This Press Release_OI
DH18T373	3160	142.50	144.00	1.50	1.35	0.49	This Press Release_OI
DH18T373	3160	148.50	150.00	1.50	1.35	0.30	This Press Release_OI
DH18T373	3160	157.50	159.00	1.50	1.35	0.56	This Press Release_OI
DH18T373	3160	166.50	190.50	24.00	22.75	0.57	This Press Release
incl	3160	166.50	171.00	4.50	4.05	1.30	This Press Release
incl	3160	169.50	171.00	1.50	1.35	2.23	This Press Release
incl	3160	187.50	190.50	3.00	2.70	1.10	This Press Release
DH18T373	3160	205.50	214.50	9.00	8.10	0.70	This Press Release_OI
incl	3160	207.00	210.00	3.00	2.70	1.35	This Press Release
DH18T373	3160	220.50	234.00	13.50	12.15	0.58	This Press Release
incl	3160	220.50	222.00	1.50	1.35	1.40	This Press Release
DH18T373	3160	261.00	267.00	6.00	5.40	0.28	This Press Release_OI
DH18T379	3160	70.00	71.50	1.50	1.50	4.16	This Press Release_OI
DH18T379	3160	97.00	101.50	4.50	4.50	0.56	This Press Release_OI
DH18T379	3160	112.00	113.50	1.50	1.50	0.37	This Press Release_OI

DH18T379	3160	178.00	188.50	10.50	10.50	0.70	This Press Release
incl	3160	178.00	181.00	3.00	3.00	1.22	This Press Release
DH18T379	3160	212.50	214.00	1.50	1.50	0.47	This Press Release_OI
DH18T379	3160	226.00	227.50	1.50	1.50	0.38	This Press Release_OI
DH18T385	3240	5.00	6.50	1.50	1.45	0.61	This Press Release_OI
DH18T371	3480	54.00	55.50	1.50	1.40	0.35	This Press Release_OI
DH18T371	3480	60.00	70.50	10.50	9.80	0.28	This Press Release
DH18T371	3480	60.00	61.50	1.50	1.40	0.61	This Press Release_OI
DH18T371	3480	103.50	106.50	3.00	2.80	0.58	This Press Release_OI
DH18T371	3480	60.00	70.50	10.50	9.80	0.28	This Press Release
DC18T018	3640	66.00	70.00	4.00	4.00	0.88	This Press Release_OI
DC18T018	3680	84.00	104.00	20.00	12.00	1.10	This Press Release
DC18T017-I	3480	77.00	85.00	8.00	6.00	0.22	This Press Release_OI
DC18T020	3880	74.00	86.00	12.00	10.50	0.87	This Press Release
DC18T021	3960	20.00	26.00	6.00	5.00	0.21	This Press Release_OI

**Cut-off used: 0.25 g/t Au**

**Previously Released** - Significant intercepts announced on 22nd June

**Previously Released\_OI** - Other intercepts above 0.25 g/t Au cut-off as on 22nd June

**This Press Release** - Significant intercepts between 22nd June & 10th July

**This Press Release\_OI** - Other intercepts above 0.25 g/t Au cut-off between 22nd June & 10th July