

3 April 2023

KEFI Gold and Copper plc  
("KEFI" or the "Company")

Maiden Al Godeyer Resource to contribute to the Hawiah Project Open Pittable Resources

Appendix C – Diagrams

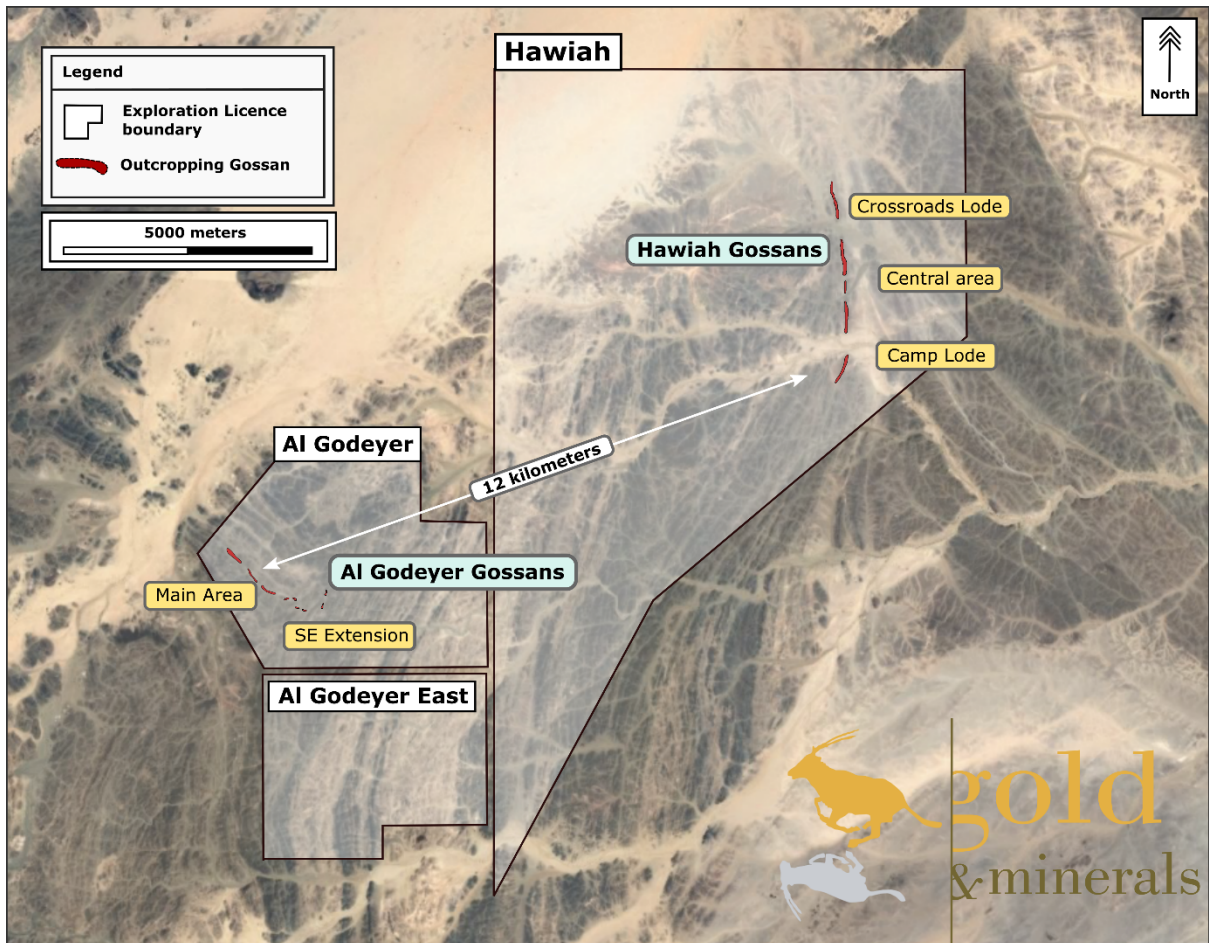
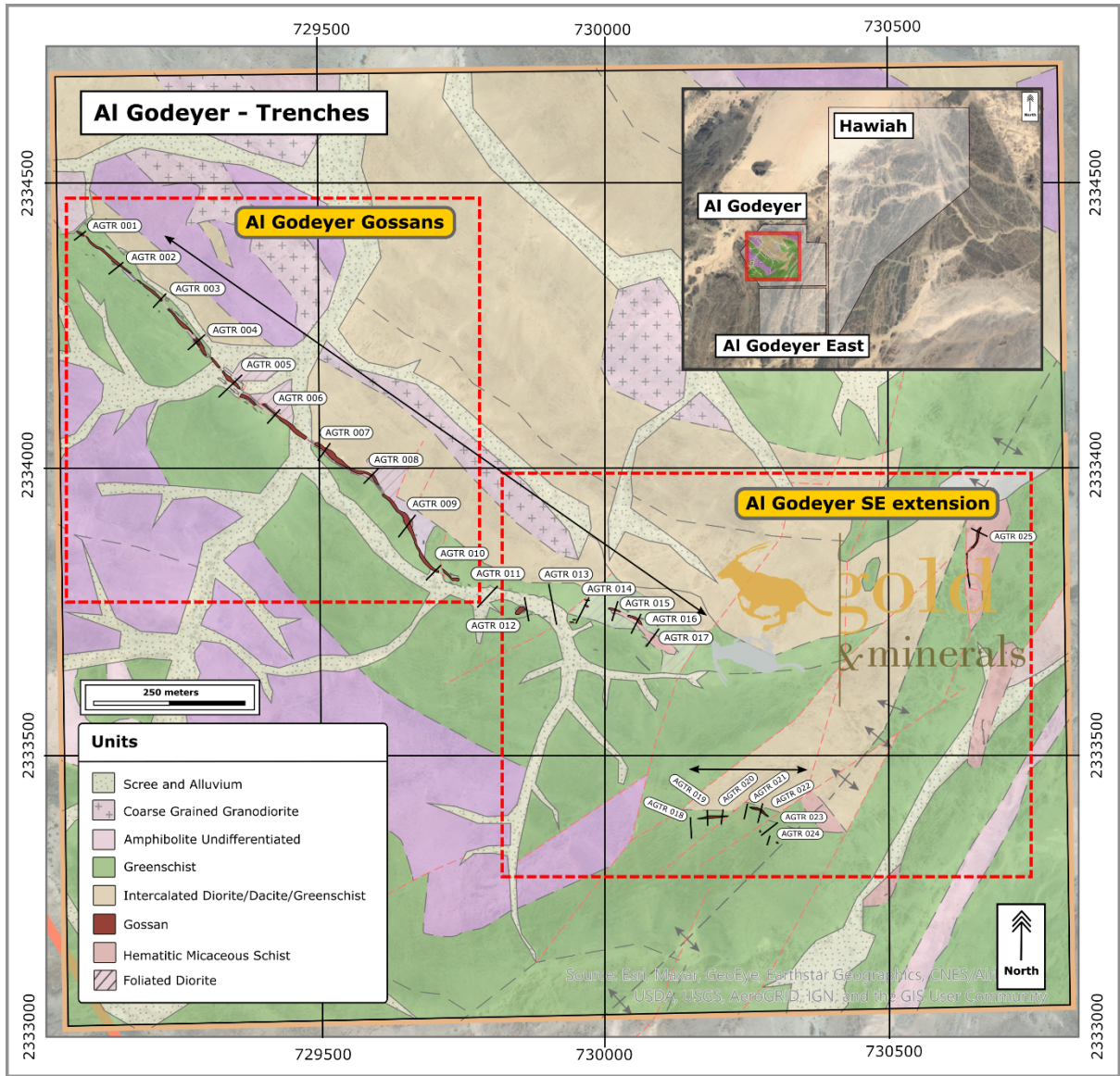
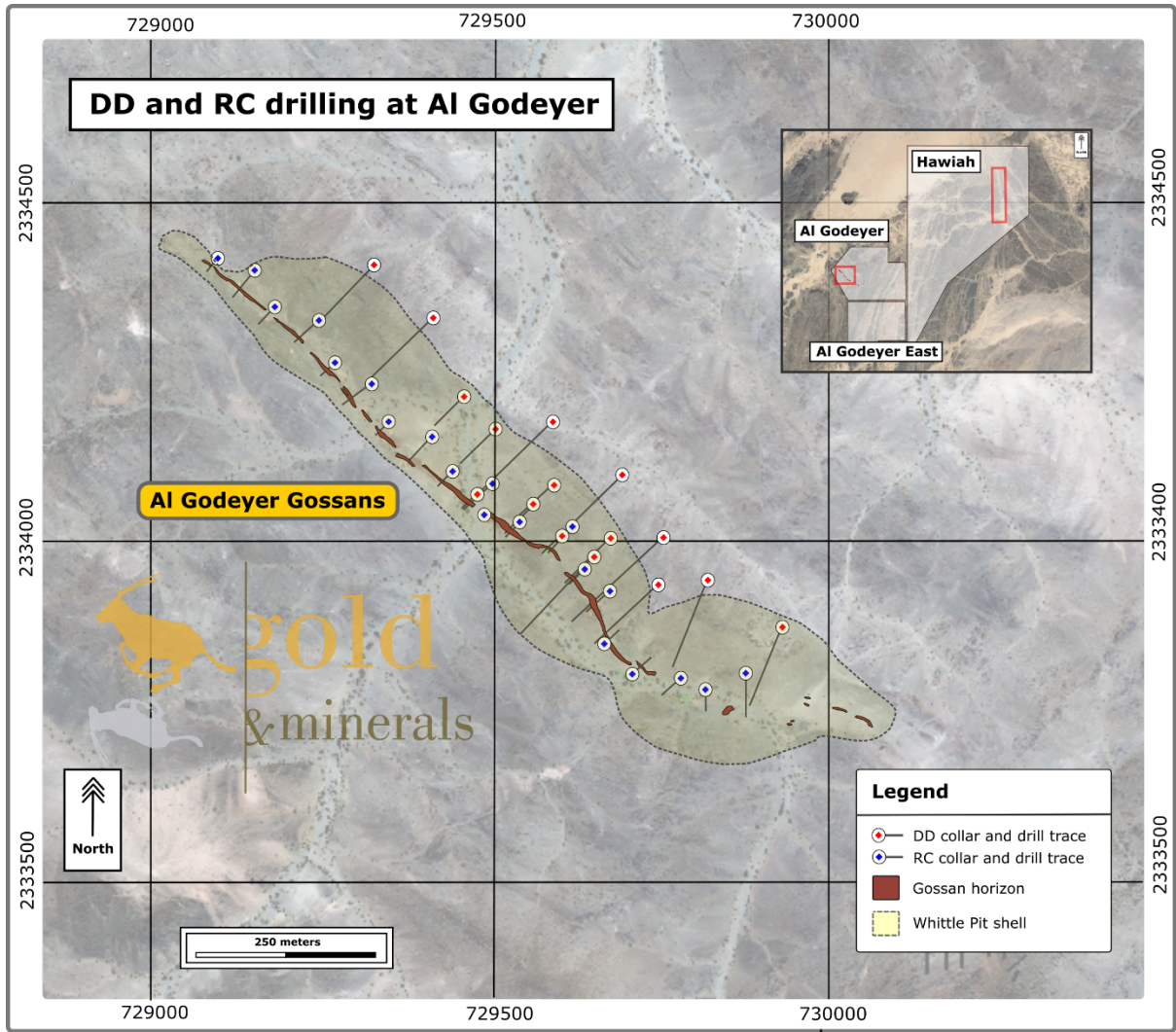


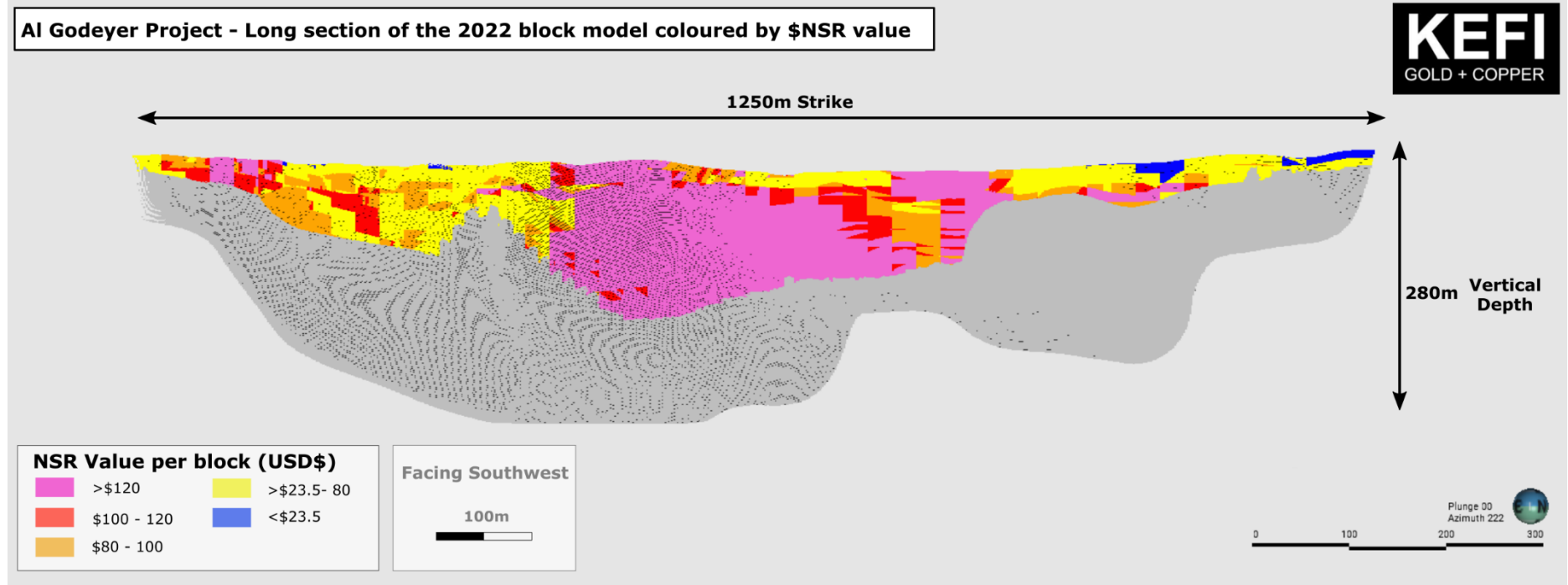
Figure 1 - Location map of Al Godeyer relative to the Hawiah project.



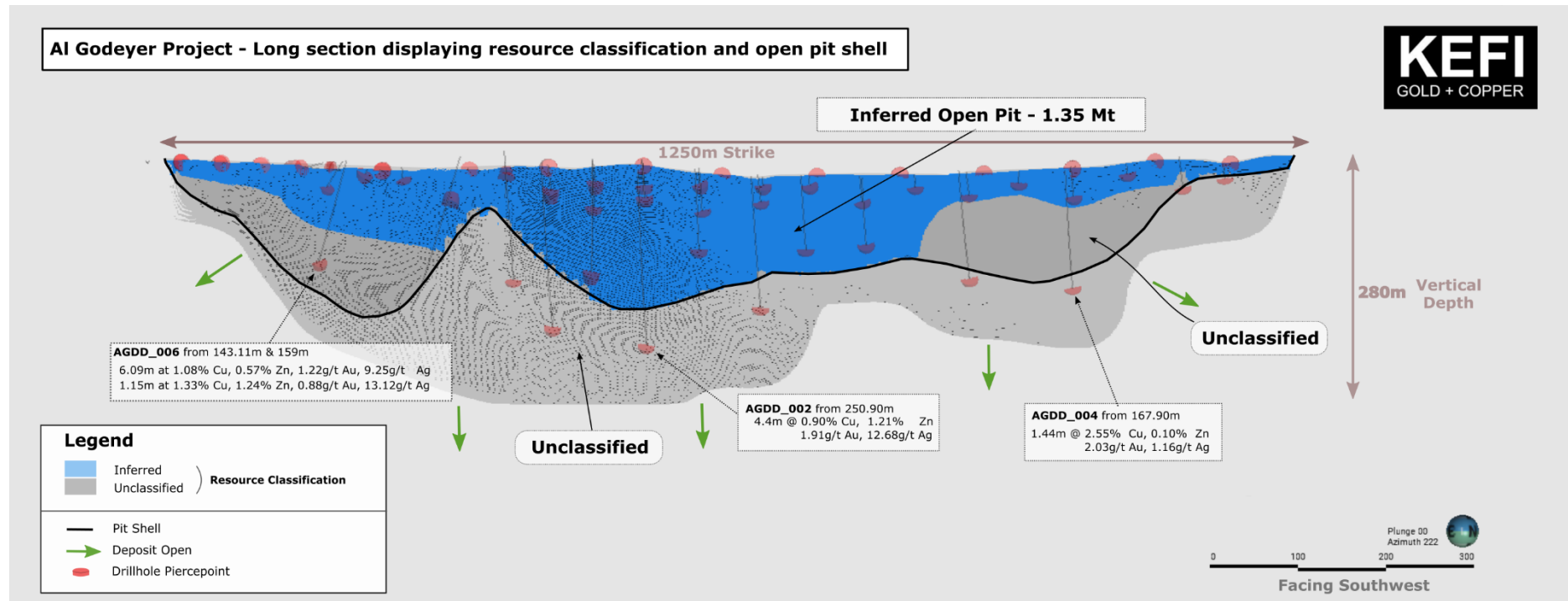
**Figure 2 – Al Godeyer area with Local geology and trench locations shown.**



**Figure 3 - Collar locations of diamond and RC drilling across the Al Godeyer project.**



**Figure 4 – Long section of the Al Godeyer deposit displaying NSR values within the Block Model**



**Figure 5- AI Godeyer deposit in Long section displaying resource classification and the open pit locations**

