

**Figure 1:** Location of Cascabel project in northern Ecuador.

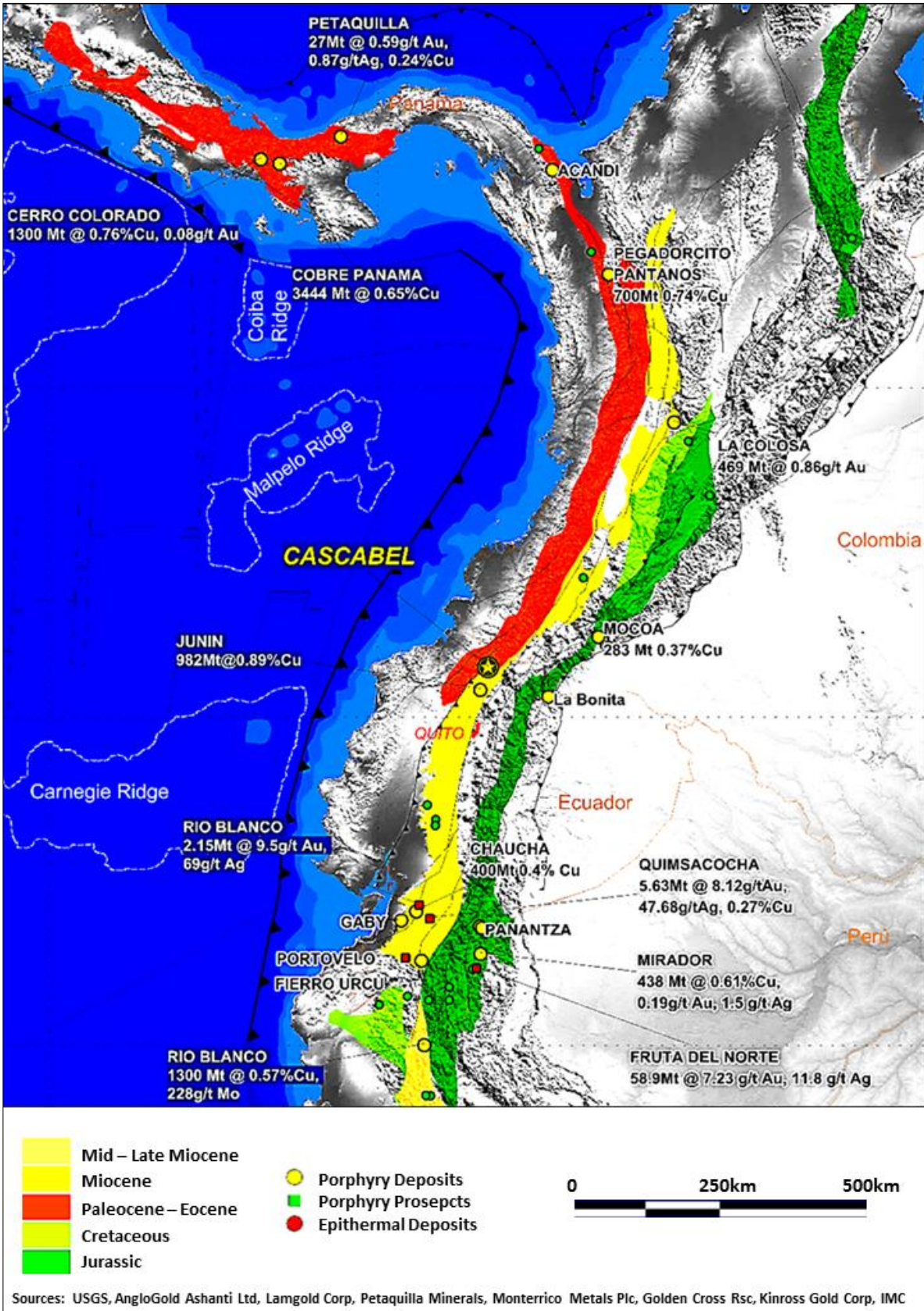


Figure 2: Regional Setting of the Cascabel Project, in the northern Andean Copper Belt.

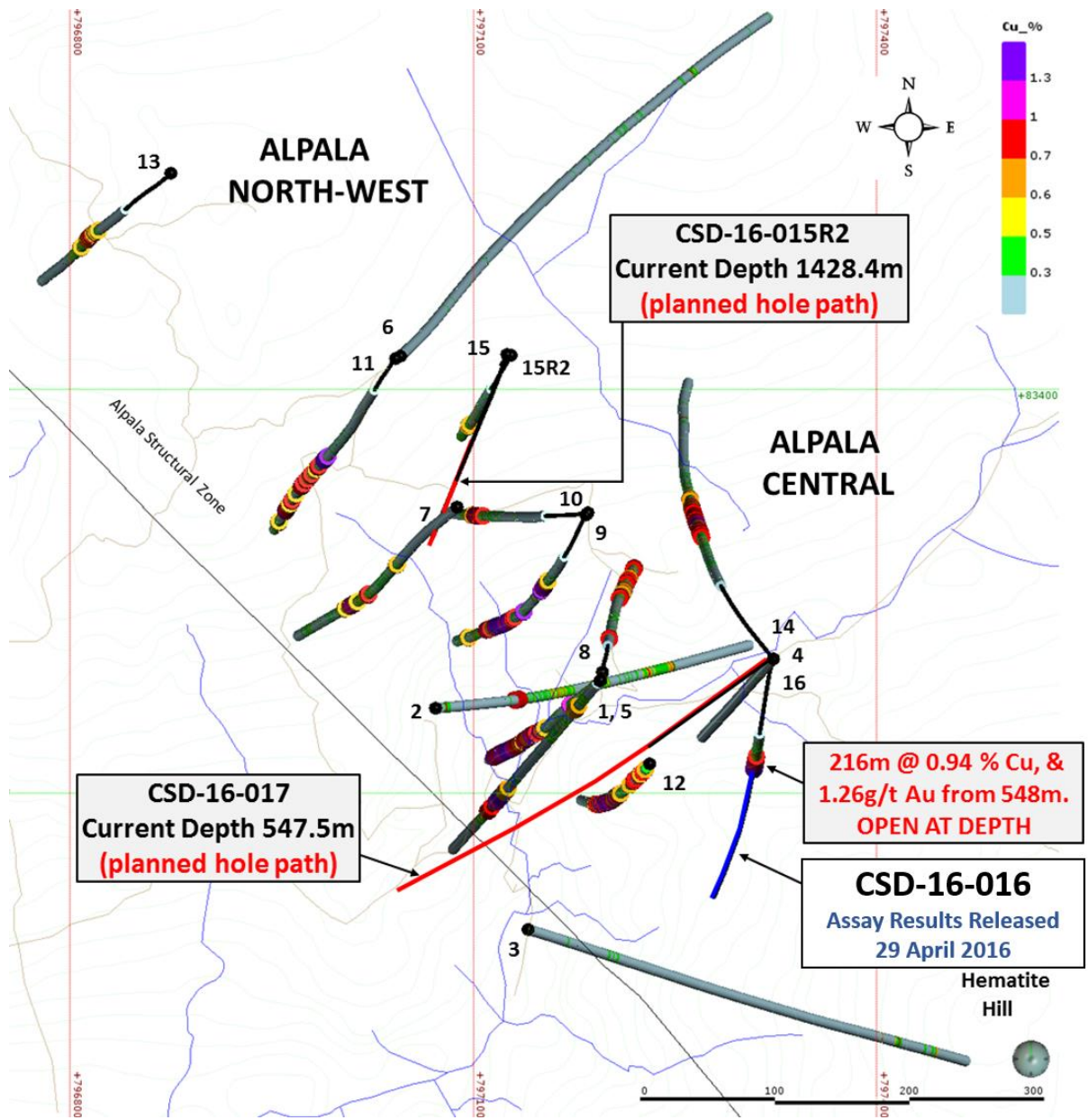


Figure 3: Drill hole location plan, Alpa.

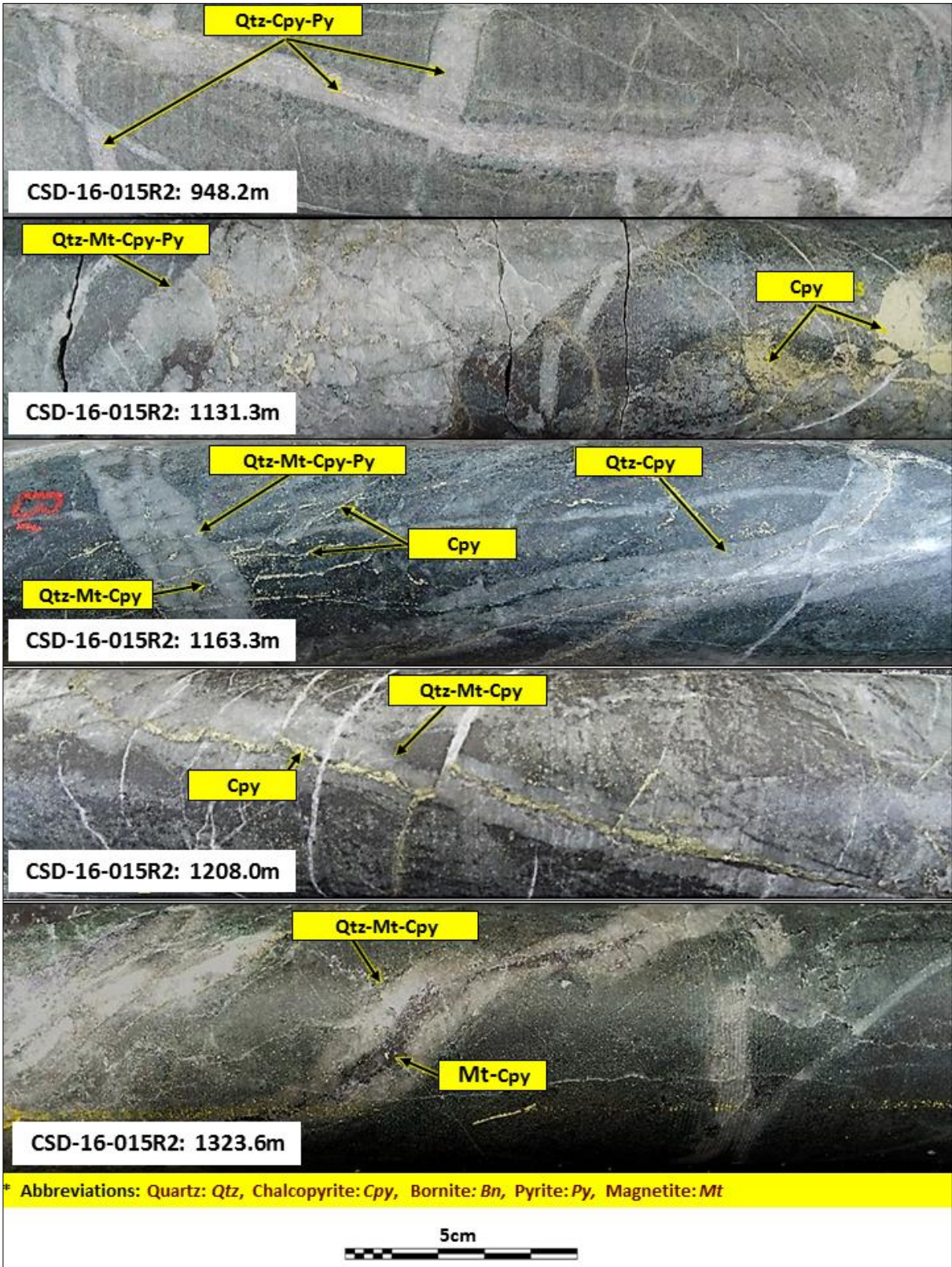


Figure 4: Examples of mineralisation encountered to date in Hole 15R2.



Figure 5: Examples of mineralisation encountered to date in Hole 15R2.